

**tedee**  
**tedee Dry**  
**Contact**  
**Module**



## tedee Dry Contact Module Installation Guide

[Home](#) » [tedee](#) » tedee Dry Contact Module Installation Guide 

### Contents

- 1 [tedee Dry Contact Module](#)
- 2 [Product Usage Instructions](#)
- 3 [Introduction](#)
- 4 [Installation Requirements and Safety Considerations](#)
- 5 [Bluetooth Considerations](#)
- 6 [Safety Precautions](#)
- 7 [Wiring Guide](#)
- 8 [Signal Configuration](#)
- 9 [Factory Reset](#)
- 10 [Documents / Resources](#)
  - 10.1 [References](#)
- 11 [Related Posts](#)

**tedee**

**tedee Dry Contact Module**



## Specifications

- Product Name: Tedee Dry Contact
- Size: Matchbox-sized
- Connection: Bluetooth
- Power Input: 5-60V DC
- Compatibility: Tedee GO and Tedee PRO smart locks

## Product Usage Instructions

### Installation

Tedee Dry Contact is designed to expand the functionality of Tedee smart locks. Follow these steps for installation:

1. Ensure professional setup for safety and compliance with electrical standards.
2. Permanently install Tedee Dry Contact in a location where it can connect to the smart lock via Bluetooth.
3. Wire the unit to a power source and dry contact controller.

### Security

When using Tedee Dry Contact, note the following security considerations:

- It replaces cloud security with a wired access method.
- Ensure physical security of the installation and protect devices against unauthorized access.

### Smart Lock Compatibility

To pair or unpair Tedee Dry Contact with a smart lock:

- Must have owner or administrator access level over the smart lock.
- One Tedee Dry Contact controls only one Tedee smart lock.

### Bluetooth Considerations

For efficient Bluetooth operation:

- Test the connection range by unlocking a smart lock via Bluetooth at the intended location.
- Bluetooth range is affected by physical barriers; open spaces allow for longer connections.

### Power Supply

To power Tedee Dry Contact:

- Use a power input of 5-60V DC, compatible with various power sources.
- Ensure a power source is available at the installation location for efficient Bluetooth connection.

### FAQ

• **Q: Can Tedee Dry Contact be used with multiple smart locks?**

A: No, one Tedee Dry Contact can control only one Tedee smart lock.

• **Q: What is the power input requirement for Tedee Dry Contact?**

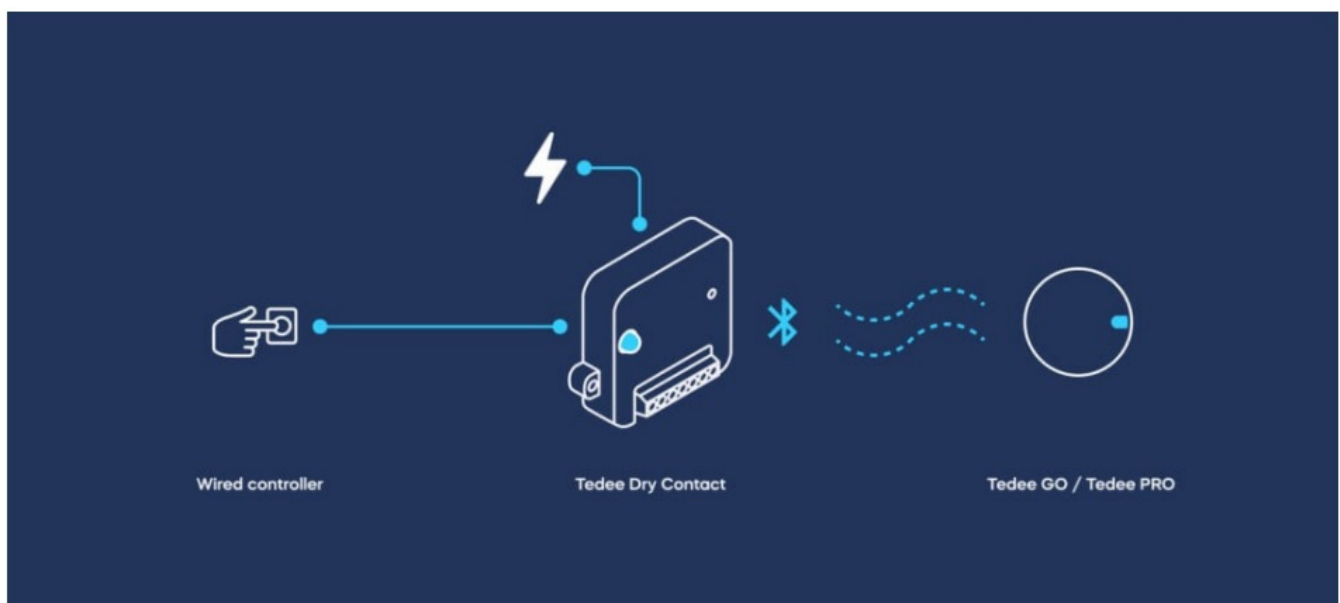
A: Tedee Dry Contact requires a power input of 5-60V DC.

### Tedee Dry Contact

Installation guide

### Introduction

Tedee Dry Contact is a matchbox-sized unit that connects to Tedee GO and Tedee PRO smart locks using Bluetooth. It can be wired directly into existing dry contact systems through connections for power and control signals.



Tedee Dry Contact is designed to expand the functionality of Tedee smart locks by enabling:

- Direct connections to alarm systems.
- Local integration with compatible smart home systems.
- Use with automatic door openers and in critical infrastructure installations.
- Operation via simple manual controls like buttons and switches.
- Other functionalities as needed.

### **Application Example**

- Suppose you want to unlock a Tedee GO smart lock by pressing a dedicated physical button at the reception desk to allow visitors inside the property without using the Tedee app on a smartphone.
- You can connect the Tedee Dry Contact to a battery-powered, compatible wired switch and pair it with the smart lock.
- When pressed, this button triggers the Tedee Dry Contact to wirelessly unlock the smart lock via Bluetooth, eliminating the need for apps or an online cloud connection.

### **Installation Requirements and Safety Considerations**

Please read the information below carefully to ensure your safety during the installation process of the Tedee Dry Contact.

The installation of the Tedee Dry Contact is intended for professional setup to ensure safety and compliance with electrical standards.

Tedee Dry Contact must be permanently installed at a location where it can simultaneously connect to the Tedee PRO or the Tedee GO smart locks via Bluetooth, and must be wired to a power source and dry contact controller.

#### **Security**

Controlling a Tedee smart lock via Tedee Dry Contact replaces the typical Tedee cloud security system and digital authentication with an alternative, wired access method.

Tedee is not responsible for the physical security of the installation or for protecting your devices against unauthorized access. Like any alarm controller or access management system, its location, administration, and users should be protected, verified, and regularly monitored.

#### **Smart Lock Compatibility**

To pair or unpair the Tedee Dry Contact with the Tedee PRO or the Tedee GO, the user must have an owner or administrator access level over the smart lock.

One Tedee Dry Contact controls only one Tedee smart lock.

### **Bluetooth Considerations**

- Typically, the Bluetooth range allowing for the operation of a smart lock extends up to 10 meters (approximately 30 feet) around the Tedee PRO / Tedee GO. However, the specific setup and location features may require a closer installation.
- Be aware that Bluetooth range is highly susceptible to physical barriers; open spaces allow for a longer connection distance, while walls, doors, or metal structures and installations may significantly reduce this range.
- The best method to determine the available location range is to test it by unlocking a smart lock with the Tedee app via Bluetooth at the intended location. If the connection is efficient, that location is suitable for permanent Tedee Dry Contact installation.

## Power Supply

Tedee Dry Contact uses a power input of 5-60V DC voltage, offering compatibility with a wide range of power sources from power banks to permanent electrical connections.

Ensure that a power source is available at the intended installation location for the device, where it can connect efficiently to your smart lock via Bluetooth.

Tedee Dry Contact does not include a power adapter.

Never connect Tedee Dry Contact directly to a power outlet or a 230V/110V power supply.

## Warning

Connect the device only according to the diagram presented in this manual. Improper connections can be dangerous, may damage the device, and could void your warranty.

## Danger! Risk of electric shock!

Even when the device is turned off, the outputs may still be live (actively transmitting electricity). All installation work should ALWAYS be performed with the power circuit disconnected.

## Note

Connecting the device to a power supply that does not meet the specifications outlined in EN 50081-1, EN 50082-1, UL508, and EN 60950 may void the warranty.

## Safety Precautions

Disconnect the installation supply voltage before installing the Tedee Dry Contact device.

Switch off the main fuse or disconnect the power cord from the main socket.

## Installation Location

Install the module in a place protected against adverse environmental conditions and unauthorized access, such as in a flush box or inside the enclosure of the controlled device.

## Device Placement and Installation

Be aware that metallic elements (wires, housing parts) may negatively influence the wireless connection and operation of the device.

It is recommended to fix the module in a stable position. The device body has two holes suitable for secure installation using screws (not included).

## Step 1) Connection Guidelines

The device uses two logical inputs to trigger locking and unlocking operations. These can be wired to any compatible outputs, such as alarm controllers, buttons, switches, or relays.

Two outputs convey the lock's status, indicating whether it is locked or unlocked and whether the device requires attention, for example, when it is blocked, needs charging, or requires calibration.

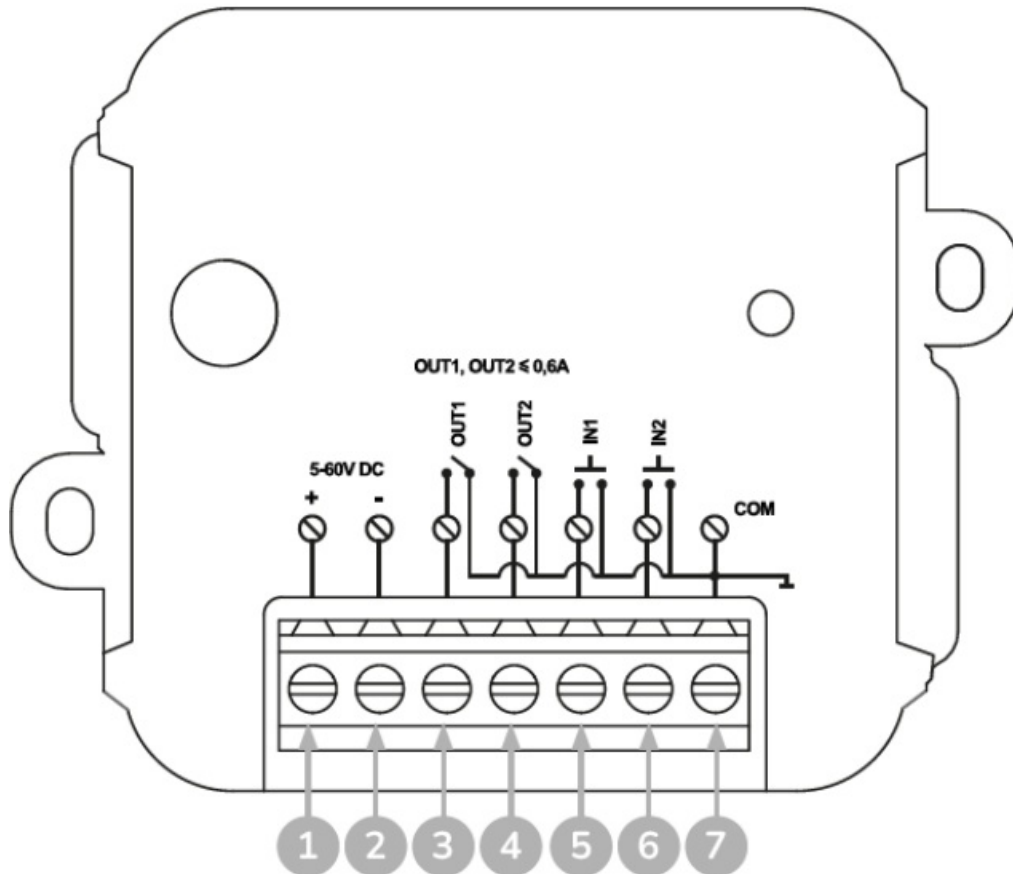
The operation of Tedee Dry Contact's inputs and outputs can be configured within the Tedee app.

## Wiring Guide

Consult the diagrams provided below, paying particular attention to the designation of the connectors.

1. + 5-60V DC
2. – 5-60V DC
3. OUT1 – OUTPUT 1
4. OUT2 – OUTPUT 2
5. IN1 – INPUT 1
6. IN2 – INPUT 2

## 7. COM – COMMON



### Wiring Process

Start by connecting the 5-60V DC voltage power to connectors (1) and (2) as shown in the drawing above, ensuring the correct polarity for the (+) and (-) connectors.

Connect the input and output terminals (3), (4), (5), and (6), always linking them back to the common circuit via the COM (7) connector.

Ensure that the device is connected correctly according to the diagram and that there are no loose metal components, which may accidentally cause a short circuit.

### Device Activation

Activate the device by turning on the power, switching on the main fuse, or reconnecting the power cord to the power outlet.

### Step 2) Adding Device to the Tedee App

To set up Tedee Dry Contact, you must have a Tedee account with the owner or the administrator access level to the smart lock that will be connected to the dry contact controller.

1. Download the Tedee smartphone app.

[Google Play](#)

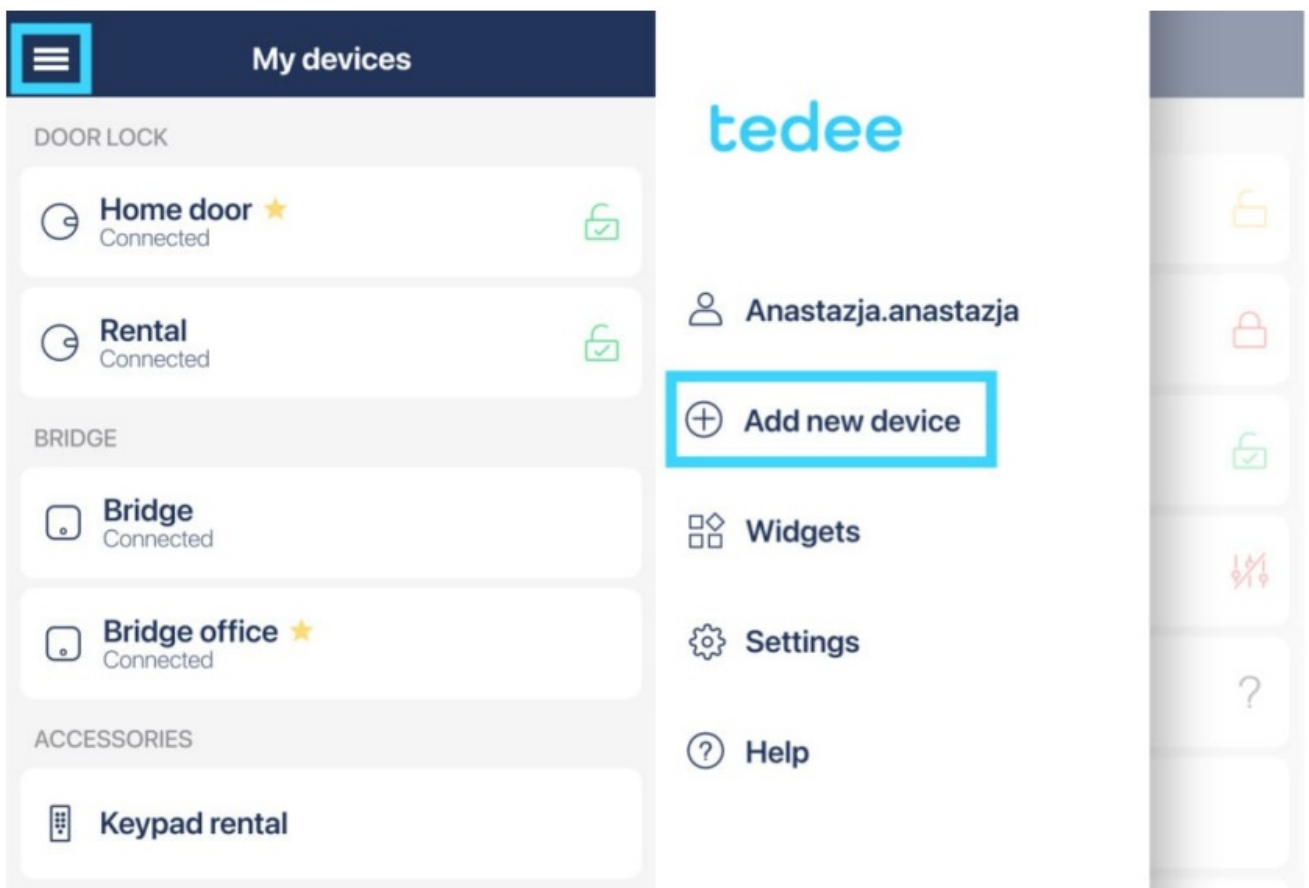
[App Store](#)

[Google Play](#)

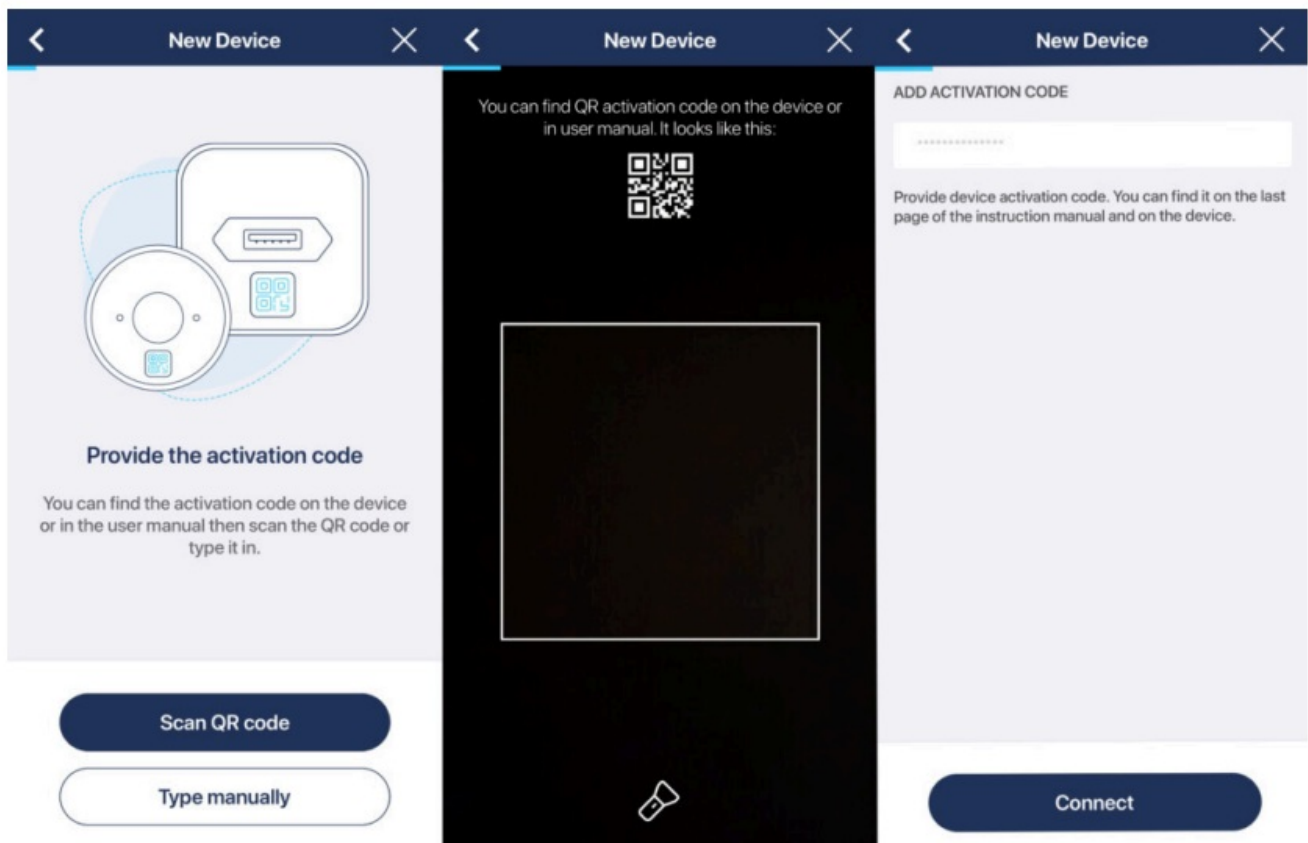
[App Store](#)



2. If not already done, install your Tedee PRO or Tedee GO and add it to your account.
3. Launch the Tedee app on your smartphone and log in.
4. From your devices list, access the sidebar menu by pressing the icon in the top-left corner.
5. Choose “Add new device” and press “Add new device”.

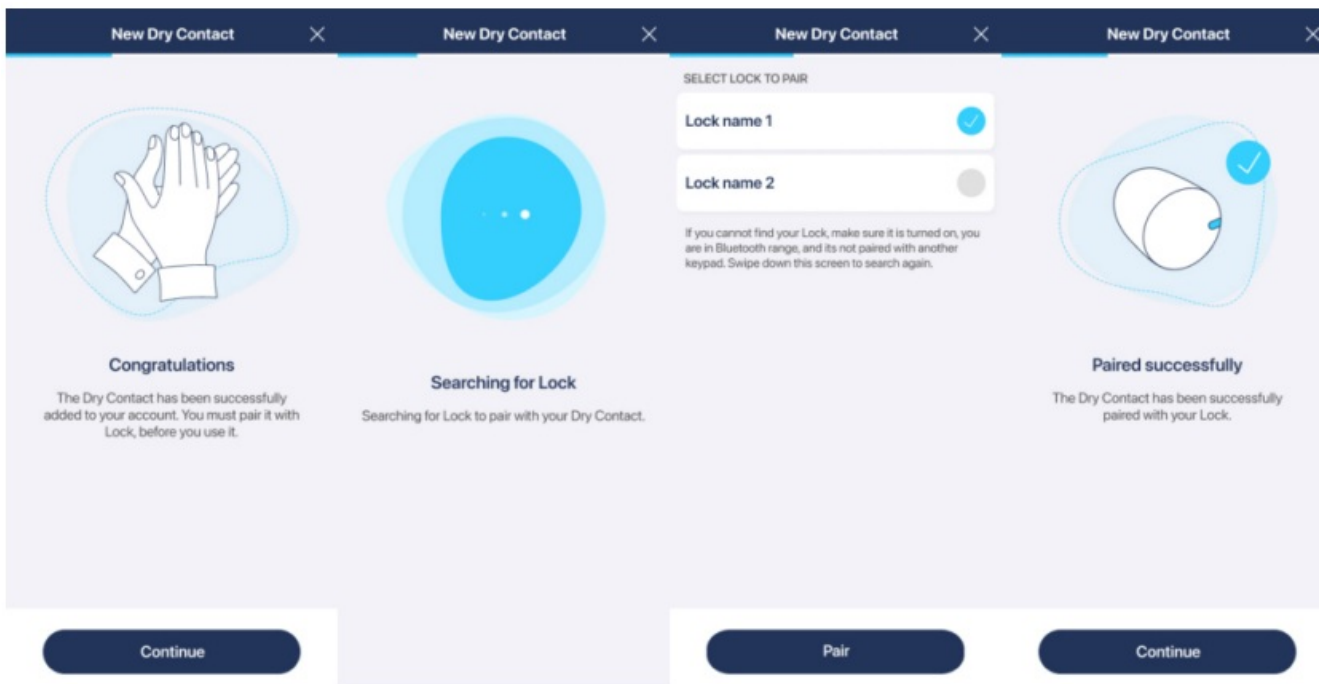


6. Input your Tedee Dry Contact activation code – this is provided as a QR code and in text format within your device's paper manual, and it is also printed on a sticker on your device.
7. Click “Connect.” Your smartphone will add the Tedee Dry Contact to your account. Afterwards, you will proceed to pair the Tedee Dry Contact with your Tedee PRO or Tedee GO smart locks.



8. Press “Continue” to scan for Tedee smart locks within the Bluetooth range of your Tedee Dry Contact.

9. Choose the smart lock to pair with the Tedee Dry Contact, press “Pair,” then “Continue.”

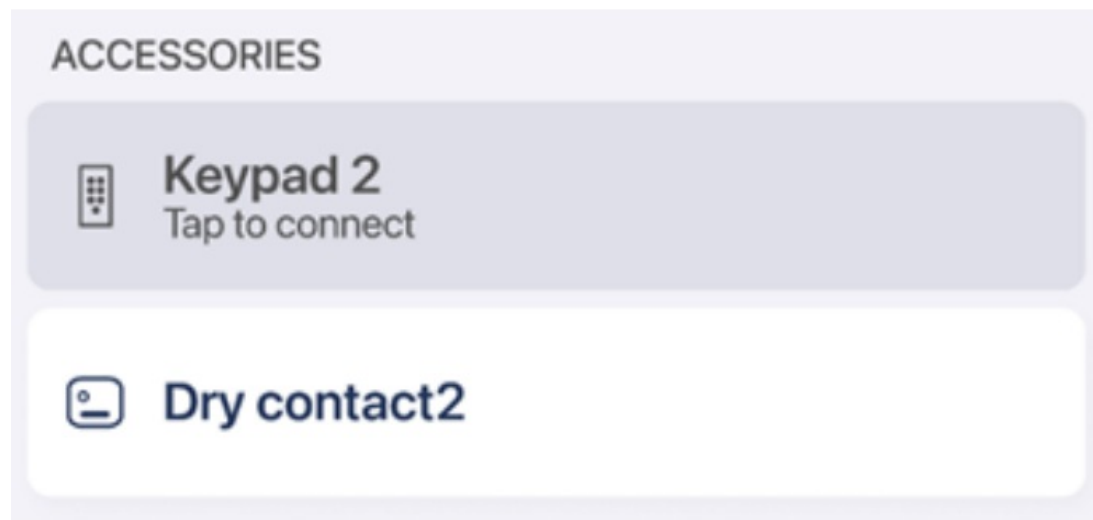


You're now ready to configure your Tedee Dry Contact and the operations of its inputs and outputs.

### Step 3) Device Configuration

The paired Tedee Dry Contact will be displayed in the list of your devices, under the “Accessories” section.

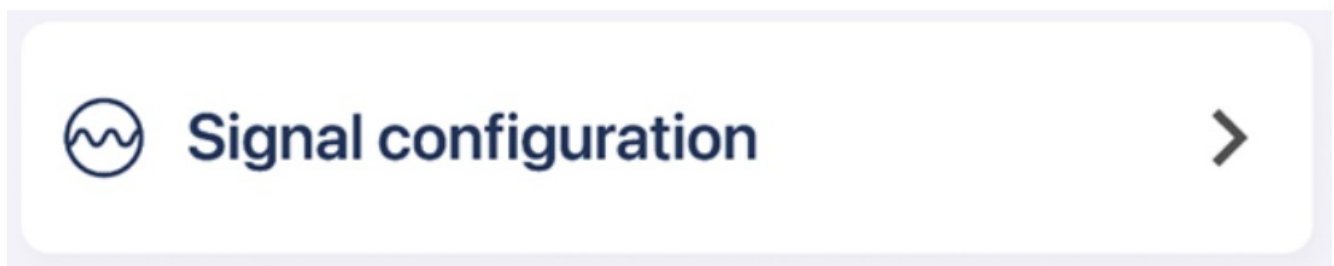




Tedee Dry Contact does not have a control screen. Selecting the device will lead directly to the device settings.

### Signal Configuration

To set up the operation of your dry contact's logical inputs and outputs, navigate to the "Signal Configuration" tab in the settings.



Now, select your configurations for inputs and outputs according to the guidelines described in detail within the app.

Signal configuration

INPUT 1

Trigger

Impulse ▾

Default state

Normally open ▾

OUTPUT 1

Default state

Normally closed ▾

OUTPUT 2

Default state


Normally open ▾

### Paired Lock

In the device settings, the Tedee Dry Contact can only be unpaired from a connected smart lock if the user has owner or administrator-level access to both devices simultaneously.

Paired Lock

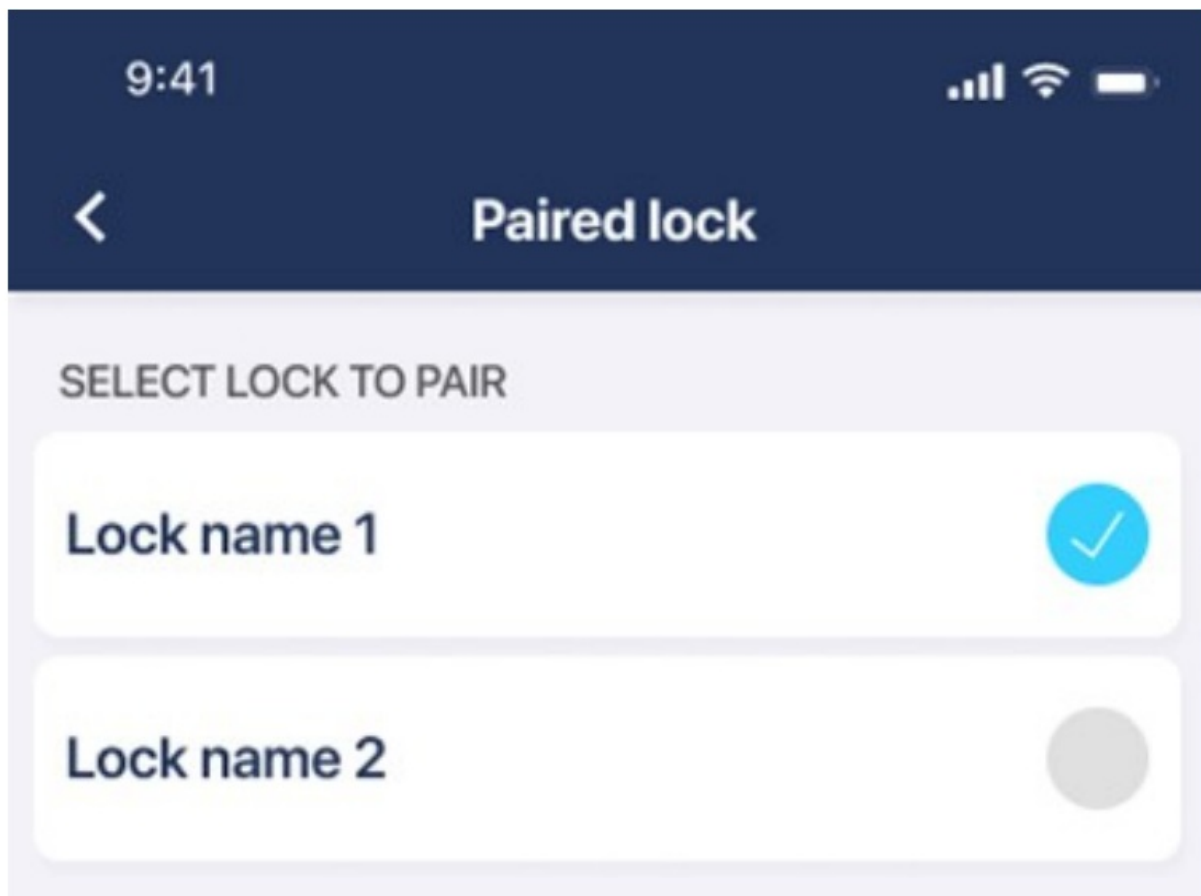
PAIRED LOCK

 Front Door 1

Unpair

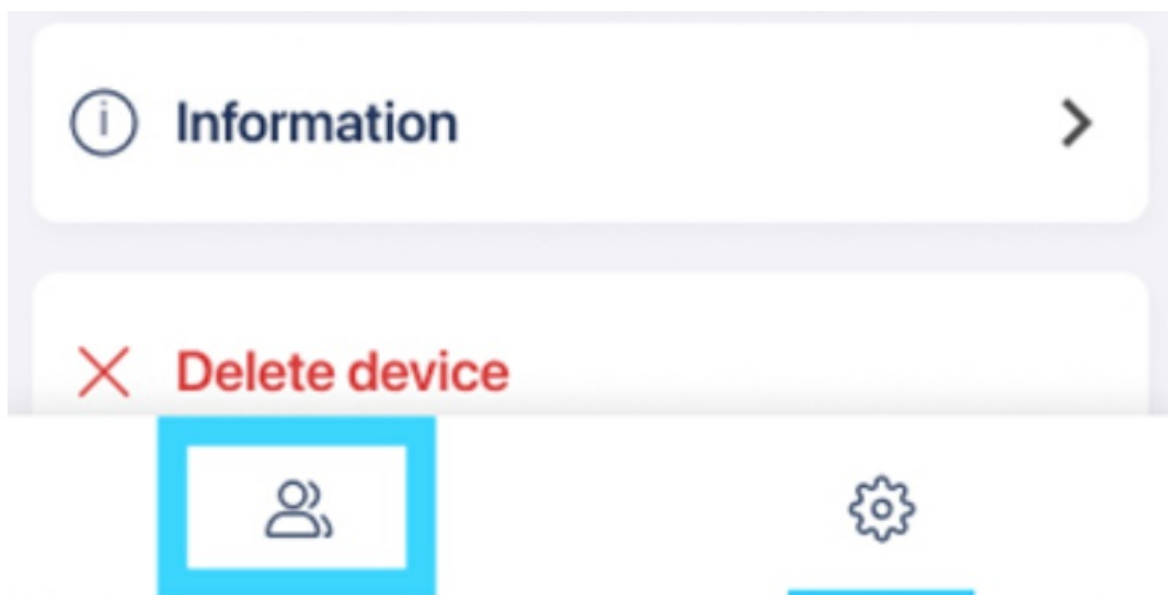
If the Tedee Dry Contact is unpaired or not currently paired with any smart lock, this step will display the smart

locks connected to your Tedee account. You can then choose a smart lock to pair with the Tedee Dry Contact.



#### Control Sharing

Pressing the left icon in the bottom menu of the Tedee Dry Contact settings opens the access- sharing controls, where the device owner can grant administrator-level access to other users.



Access to the Tedee Dry Contact can only be shared permanently with other administrators; it does not support guest user types or temporary/recurring access.

- Be aware that sharing access to the Tedee Dry Contact only grants authorization to browse and edit its settings. Control over a smart lock requires a separate sharing process.
- To pair (or unpair) a Tedee Dry Contact with a Tedee smart lock, the user must be an owner or an administrator

of both devices.

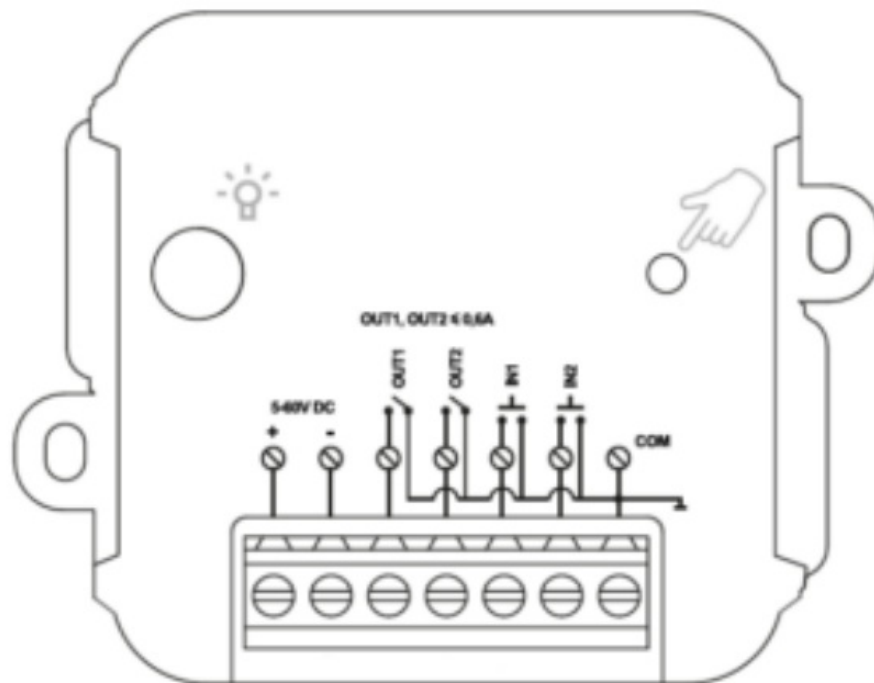
- Guest users of smart locks have no access to any information or configuration of the Tedee Dry Contact.

## Factory Reset

A factory reset removes all pairings and configurations of inputs and outputs. After a factory reset, the device must be added to the Tedee account.

To reset the Tedee Dry Contact to factory settings:

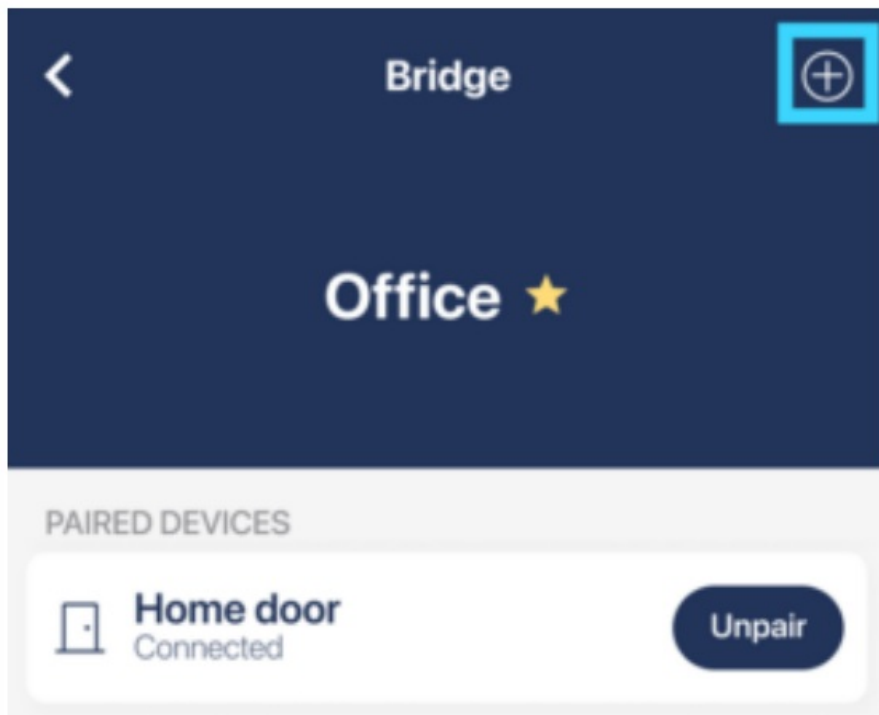
1. Press the button of the Tedee Dry Contact.
2. Hold the button until the red LED flashes and then release the button
3. The reset is confirmed by three flashes of the red LED.




## Tedee Dry Contact and Tedee Bridge

The Tedee Dry Contact can be paired with a Tedee Bridge if located within its Bluetooth range to enable automatic firmware updates and remote access to its configuration.

If you are an owner or administrator of both devices, go to the access panel of your Tedee Bridge and press the “+” icon in the top-right corner to scan for available devices.



## Documents / Resources

<div>Tedee Dry Contact</div> <div></div> <div>Installation guide</div>	<p><a href="#">tedee Dry Contact Module</a> [pdf] Installation Guide Dry Contact Module, Contact Module, Module</p>
---	---

## References

- [User Manual](#)

[Manuals+](#), [Privacy Policy](#)

This website is an independent publication and is neither affiliated with nor endorsed by any of the trademark owners. The "Bluetooth®" word mark and logos are registered trademarks owned by Bluetooth SIG, Inc. The "Wi-Fi®" word mark and logos are registered trademarks owned by the Wi-Fi Alliance. Any use of these marks on this website does not imply any affiliation with or endorsement.