

TecTake
TecTake 400566
Electronic With Double
Bolt Locking System



TecTake 400566 Electronic With Double Bolt Locking System Instruction Manual

[Home](#) » [tectake](#) » TecTake 400566 Electronic With Double Bolt Locking System Instruction Manual 

Contents

- 1 [TecTake 400566 Electronic With Double Bolt Locking System](#)
- 2 [Product Information](#)
- 3 [Product Usage Instructions](#)
- 4 [PARTS LIST](#)
- 5 [HOW TO OPEN THE SAFE](#)
- 6 [HOW TO SET USER CODE](#)
- 7 [INSTALLING THE SAFE](#)
- 8 [Correct Disposal of this product](#)
- 9 [Documents / Resources](#)
 - 9.1 [References](#)
- 10 [Related Posts](#)

TecTake

TecTake 400566 Electronic With Double Bolt Locking System



Product Information

Specifications

- Parts List:
 - Bolts: 2 pieces
 - Batteries: 4 pieces
 - Carpet: 1 piece
 - Emergency key: 2 pieces
- Default Password: 159

Product Usage Instructions

How to Open the Safe

1. Step 1: Take off the cover, then insert the emergency key and turn to the left.
2. Step 2: Turn the knob to the right, then open the door.

How to Set User Code

1. Step 1: When the door is open, open the battery compartment, and insert batteries.
2. Step 2: When the door is open, push the change code button. Input a user code (from 3-8 digits) within 30 seconds. Press 'E' to confirm it.

Installing the Safe

1. Step 1: Place the safe against the wall.

2. Step 2: Mark where holes need to be drilled.
3. Step 3: Drill holes.
4. Step 4: Place expansion bolts in holes.
5. Step 5: Align holes in safe with expansion bolts on the wall. Place screws and tighten.

Note: Do not leave your emergency key in the safe.

Please note: The safe box default password is 159, and the user code will recover to the default password in a no-power situation over 30 minutes.

Correct Disposal of this Product

This product should not be disposed of with other household wastes throughout the EU. Recycle it responsibly to promote sustainable reuse of material resources. Return your used device through return and collection systems or contact the retailer for safe recycling.

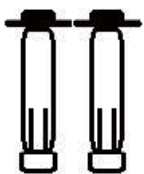



Contact Information: tectake GmbH, Tauberweg 41, D-97999 Igersheim, Germany

FAQ

What is the default password for the safe box?

The default password for the safe box is 159.

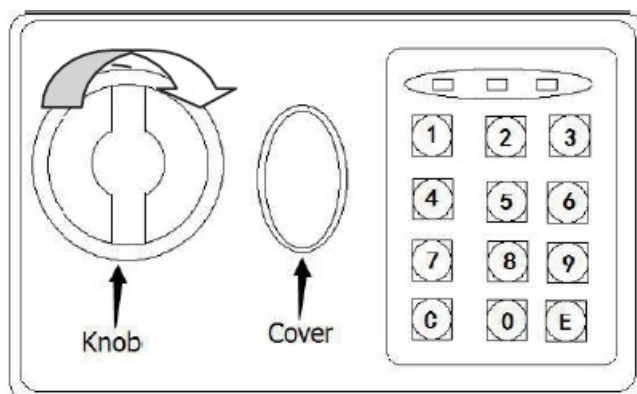
PARTS LIST

Bolts 2PC	Batteries 4PCS	Carpet 1PC	Emergency key 2PCS
			

HOW TO OPEN THE SAFE

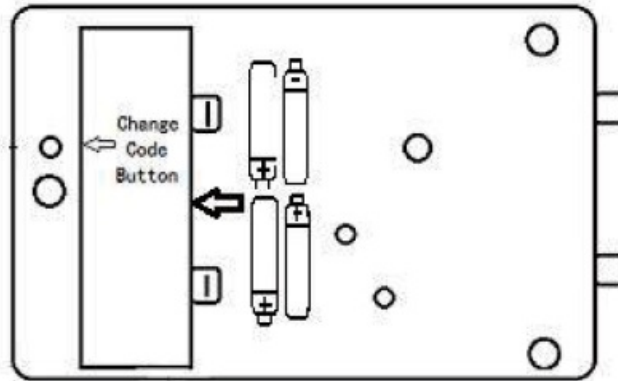
1. Step1: Take off the cover,then insert the emergency key and turn to the left.

2. Step2:Turn the knob to the right,then open the door.



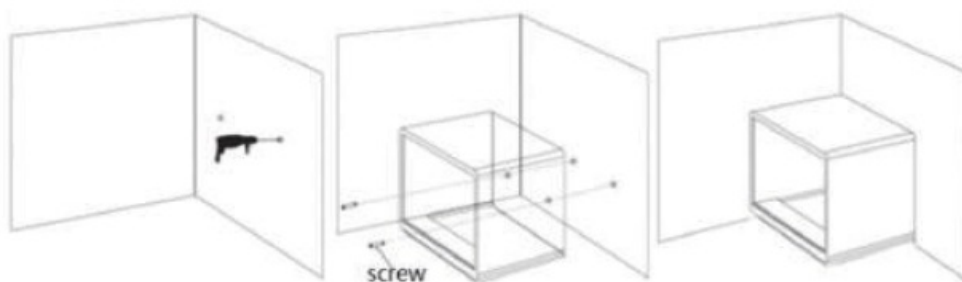
HOW TO SET USER CODE

1. Step1:When door is open,open the battery compartment,and insert batteries.
2. Step2: When the door is open,push the change code button. You can input user code (from 3-8 digits) within 30 seconds. Then press “E”to confirm it.



INSTALLING THE SAFE

1. Step1:Place safe against the wall
2. Step2:Mark where holes need to be drilled.
3. Step3:Drill holes
4. Step4:Place expansion bolts in holes.
5. Step5:Align holes in safe with expansion bolts on wall. Place screws and tighten.



Correct Disposal of this product

This marking indicates that this product should not be disposed with other household wastes throughout the EU. To prevent possible harm to the environment or human health from uncontrolled waste disposal, recycle it responsibly to promote the sustainable reuse of material resources. To return your used device, please use the return and collection systems or contact the retailer where the product was purchased. They can take this product for environmentally safe recycling.

NOTE

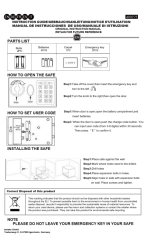
PLEASE DO NOT LEAVE YOUR EMERGENCY KEY IN YOUR SAFE tectake GmbH, Tauberweg 41, D-97999 Igersheim, Germany

IMPORTANT:

Please note that the safe box default password is 159 and the user code will recover to default password in no power situation over 30 minutes.

TecTake GmbH Tauberweg 41
97999 Igersheim
Telefon: +49 7931 991 920
E-Mail: verkauf@tectake.de

Documents / Resources

	<p>TecTake 400566 Electronic With Double Bolt Locking System [pdf] Instruction Manual 400566 Electronic With Double Bolt Locking System, 400566, Electronic With Double Bolt Locking System, Double Bolt Locking System, Bolt Locking System, Locking System, System</p>
---	--

References

- [User Manual](#)

Manuals+, Privacy Policy

This website is an independent publication and is neither affiliated with nor endorsed by any of the trademark owners. The "Bluetooth®" word mark and logos are registered trademarks owned by Bluetooth SIG, Inc. The "Wi-Fi®" word mark and logos are registered trademarks owned by the Wi-Fi Alliance. Any use of these marks on this website does not imply any affiliation with or endorsement.