



TECLAST Laptop 11 windows User Guide

[Home](#) » [TECLAST](#) » TECLAST Laptop 11 windows User Guide 

Contents


- [1 TECLAST Laptop 11 Windows User Guide](#)
- [2 System Boot-Up & Initialization](#)
- [3 Windows Settings](#)
- [4 System Activation](#)
- [5 System recovery](#)
- [6 Connect Bluetooth](#)
- [7 Change system language](#)
- [8 Desktop icon setting](#)
- [9 Charge & power management](#)
- [10 Switch between languages](#)
- [11 Touchpad gestures](#)
- [12 Switch between shortcut keys and function keys](#)
- [13 Description of interface signs](#)
- [14 Firmware download](#)
- [15 After-sales service contacts](#)
- [16 Related Posts](#)



TECLAST Laptop 11 Windows User Guide





System Boot-Up & Initialization

1. Turn on the computer, and press the power button  for booting.

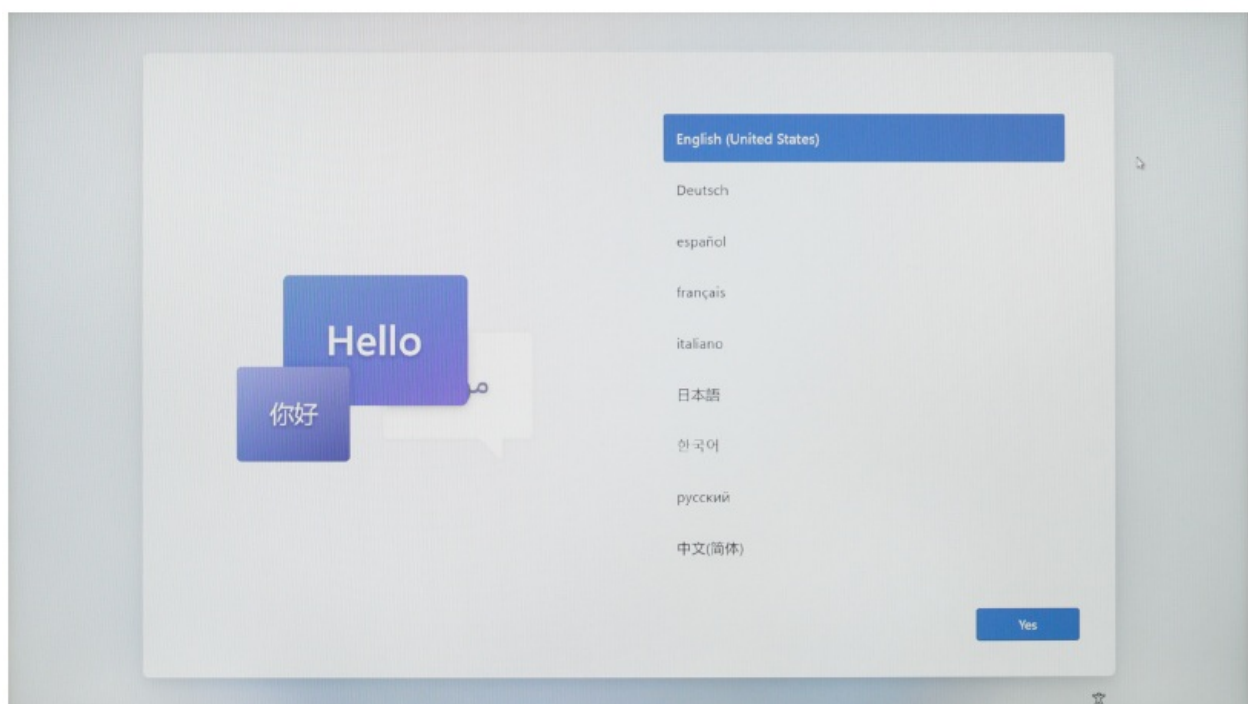
When turning on the computer for the first time, please connect the power adapter first, then the computer will turn on automatically. As the screen lights up, enter the boot setup interface.

When the computer is turned off or goes to sleep, it can be turned on or wake up by short pressing the power button until the keyboard indicator lights up.

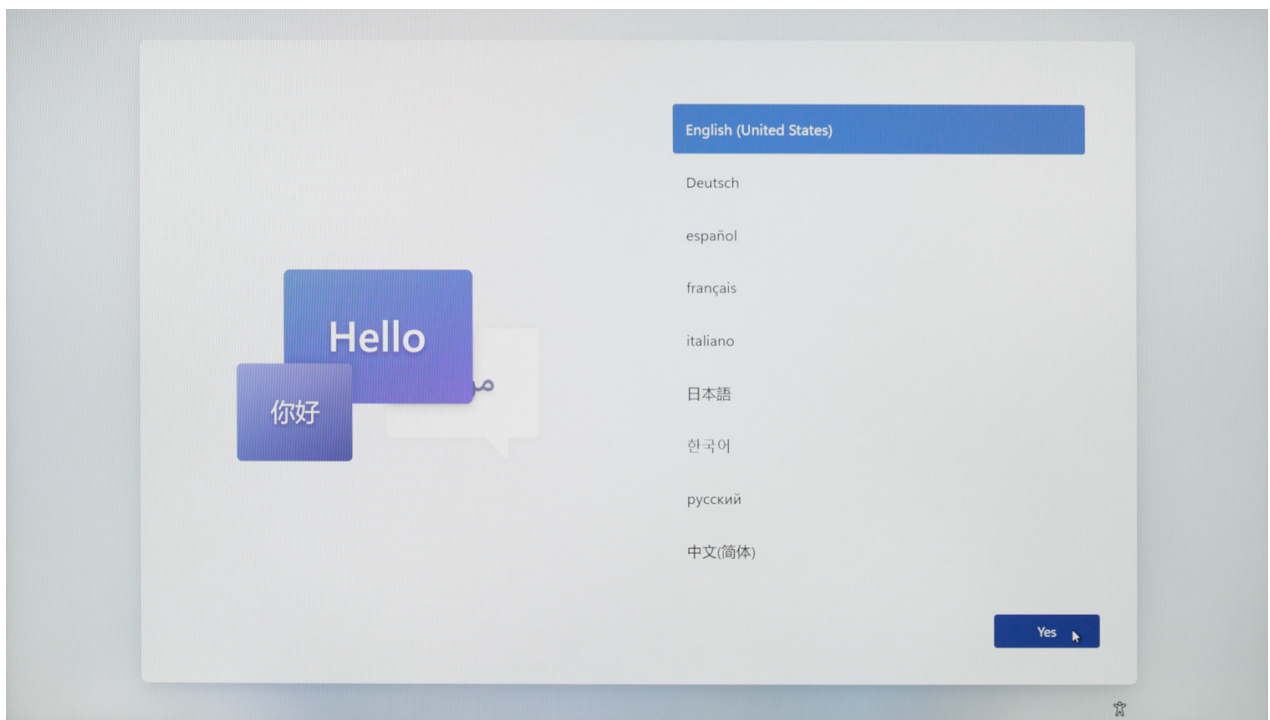
While using, click  >  to put the computer to sleep, shut down or restart.

Forced shutdown: press and hold the power button for 10 seconds or longer to force shutdown. The forced shutdown will result in the loss of any unsaved data, please use it with caution.

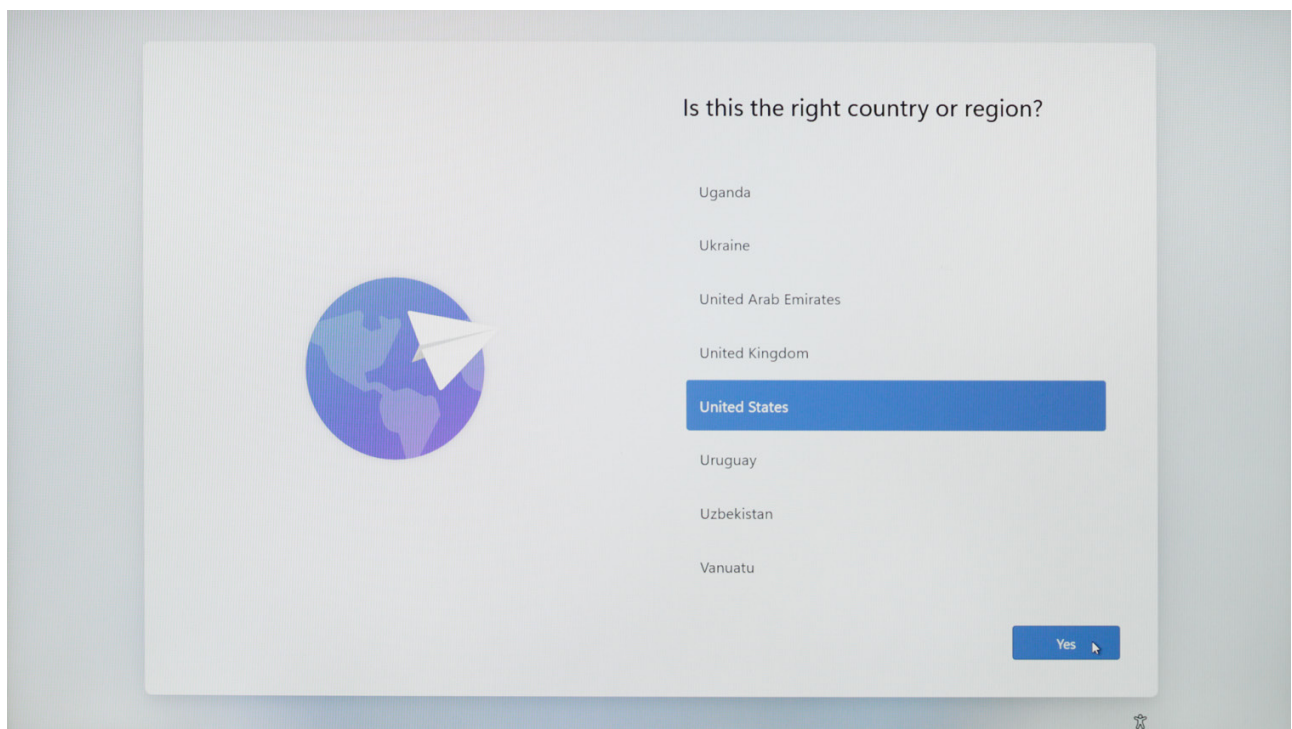
2. When booting up for the first time, the system will enter the initialization process which may take some time. Please wait patiently until the language selection interface appears.



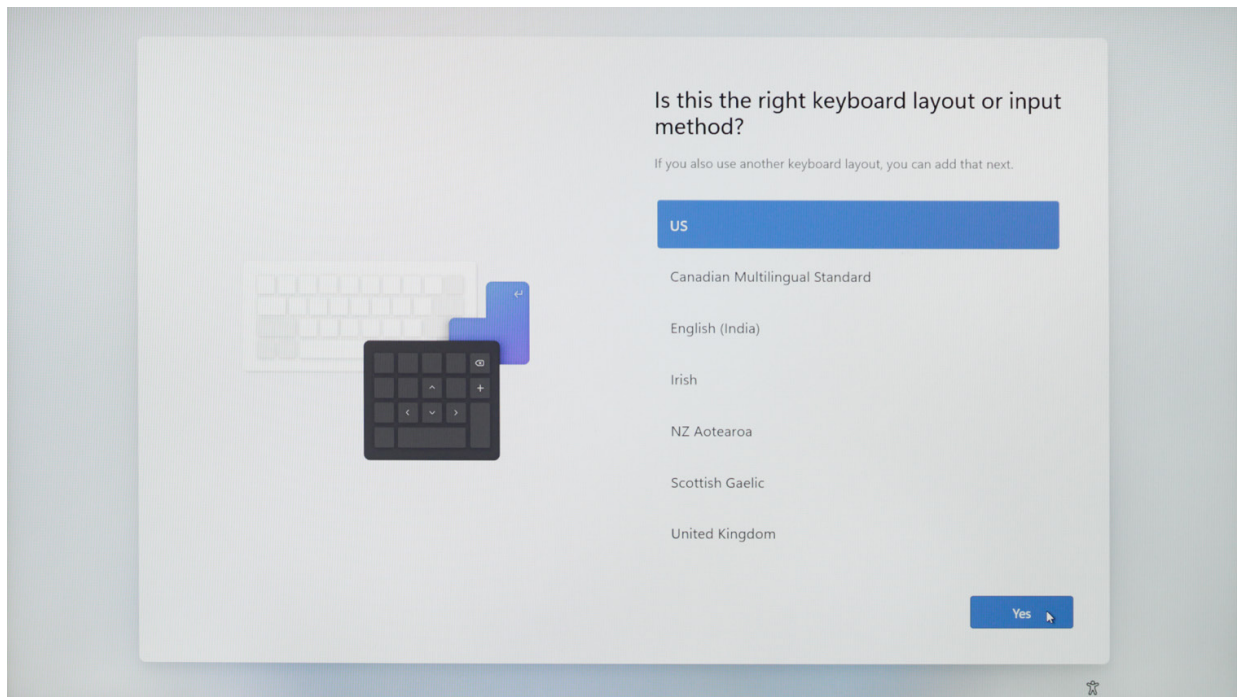
3. Now, please select a language based on your needs, and click [Yes].



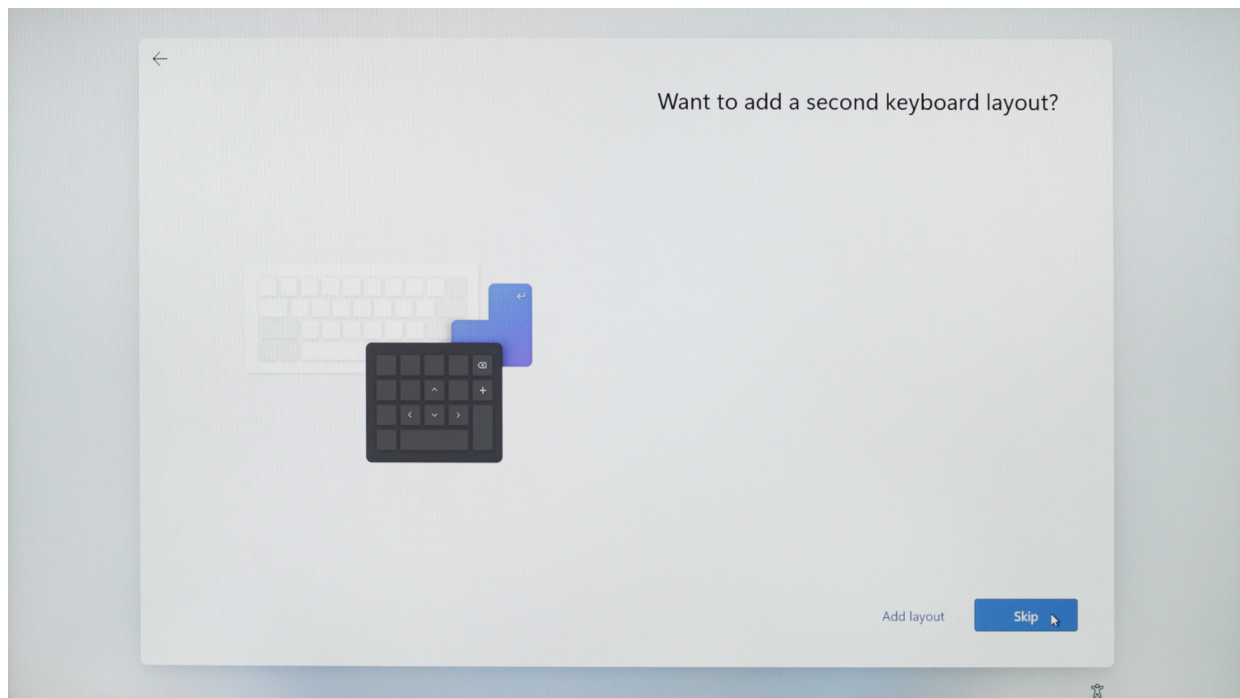
4. Select the correct country (region), and click [Yes].



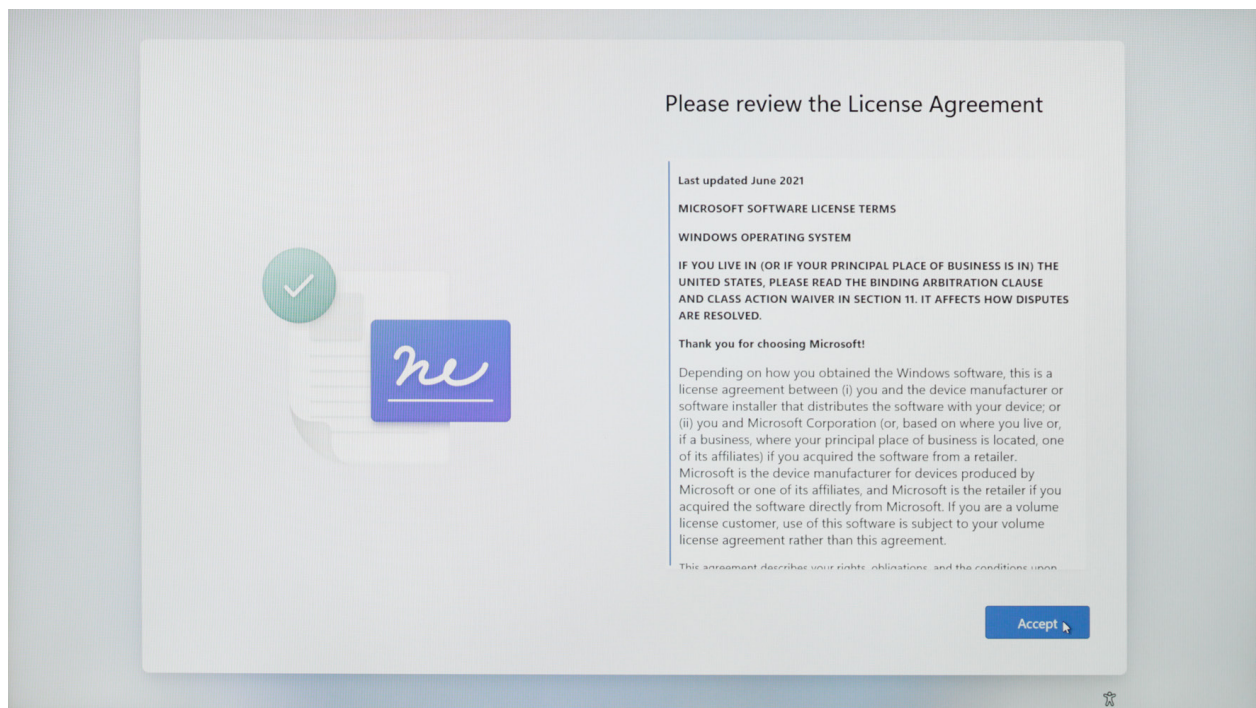
5. Select an appropriate keyboard layout.



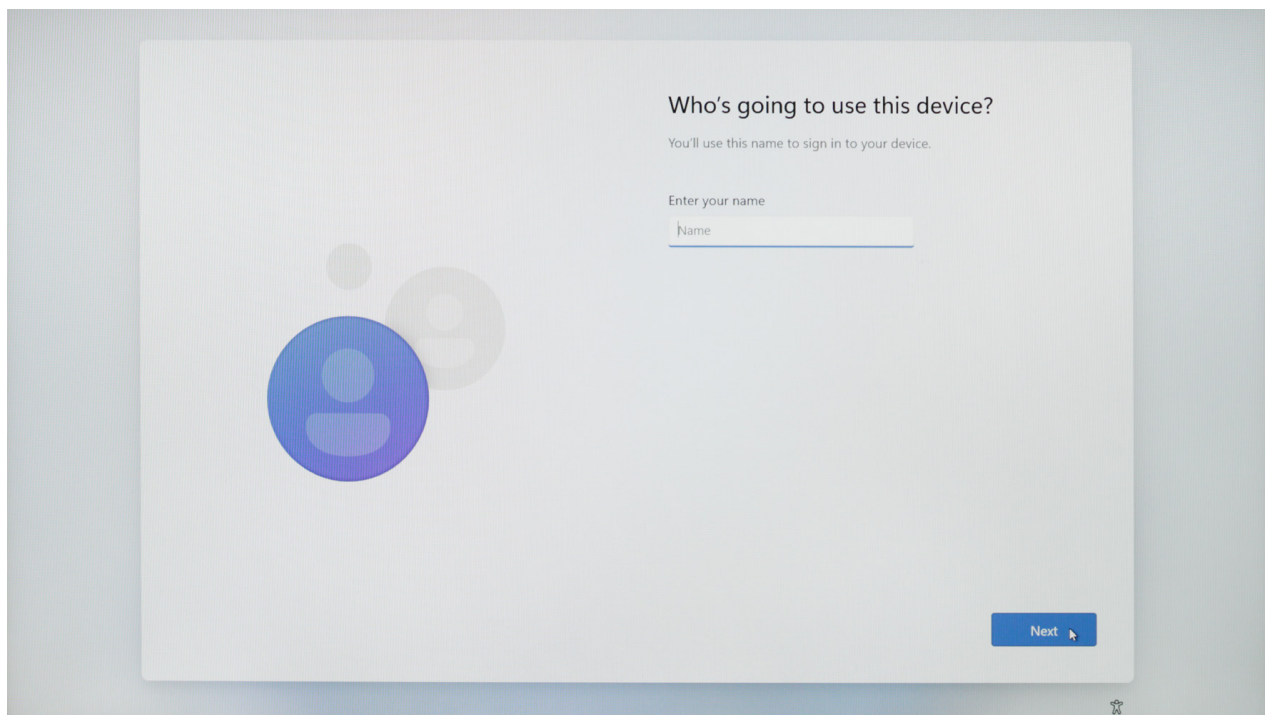
If there is no need for a second keyboard layout, please select [Skip].



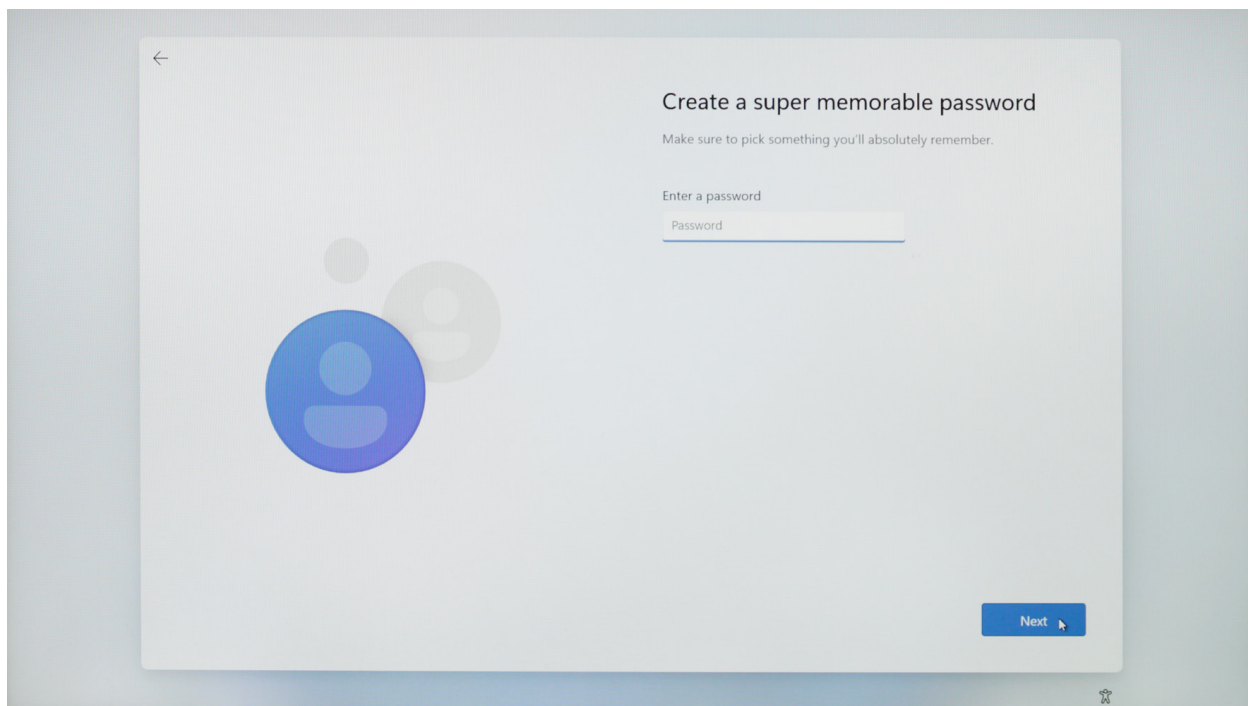
6. Read the license agreement and click [Accept] to enter the system.



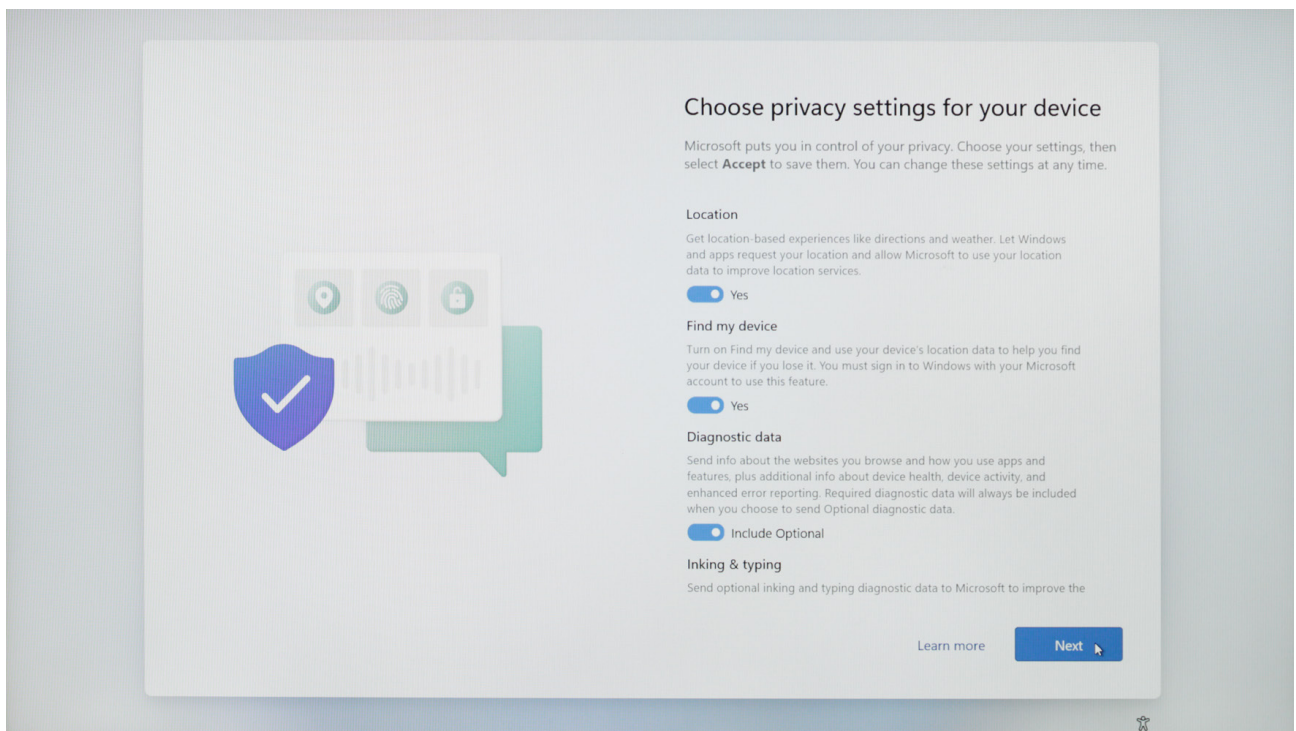
7. Enter the user name and click [Next].



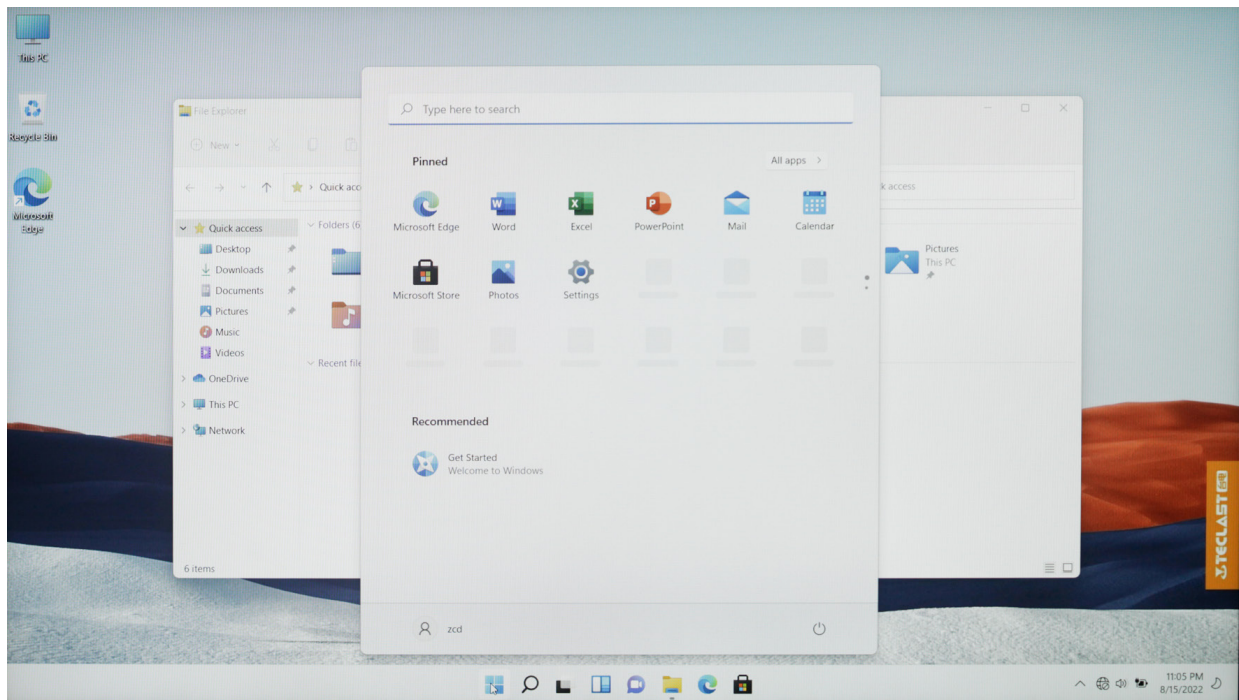
8. Choose to set a password based on your needs; if you don't need a password, please directly click [Next].



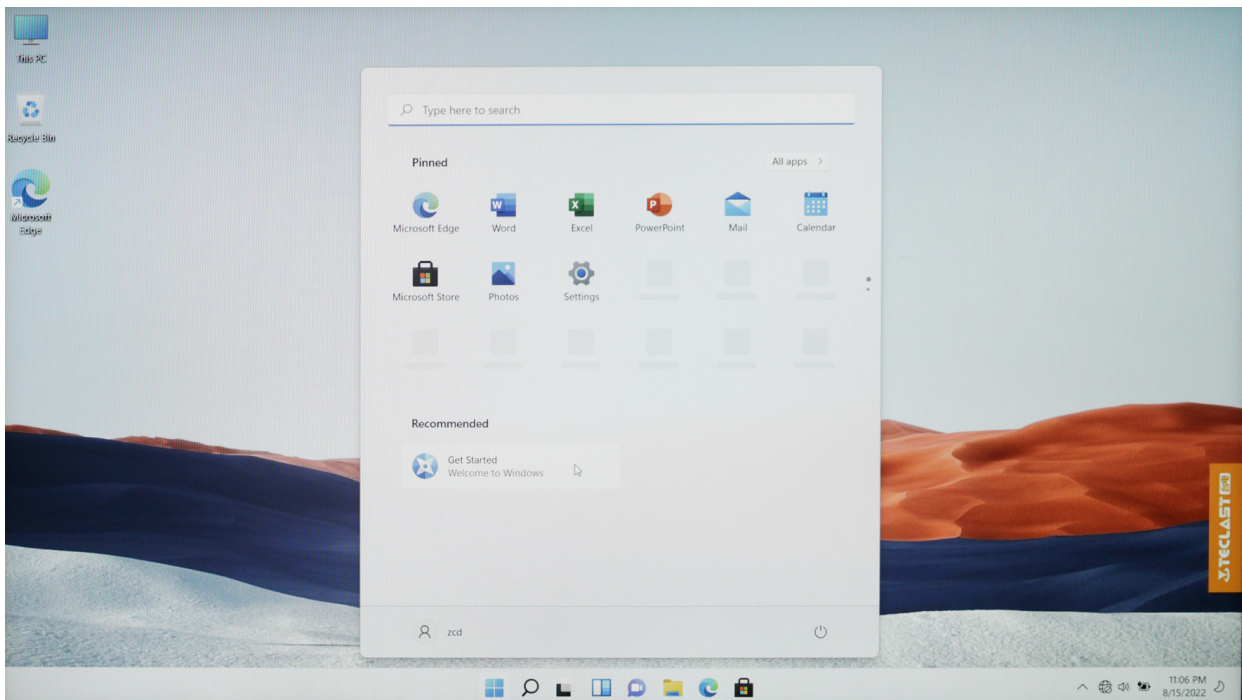
9. Choose privacy settings based on the actual needs. The page is long. You can scroll the mouse or click [Next] to scroll. When you complete the settings, please click [Yes].



10. When the above settings are completed, the system will continue to complete the final steps of initialization. During this period, please ensure sufficient power and do not shut down the computer (connecting to a power supply is recommended). The following interface appears, indicating the completion of initialization.



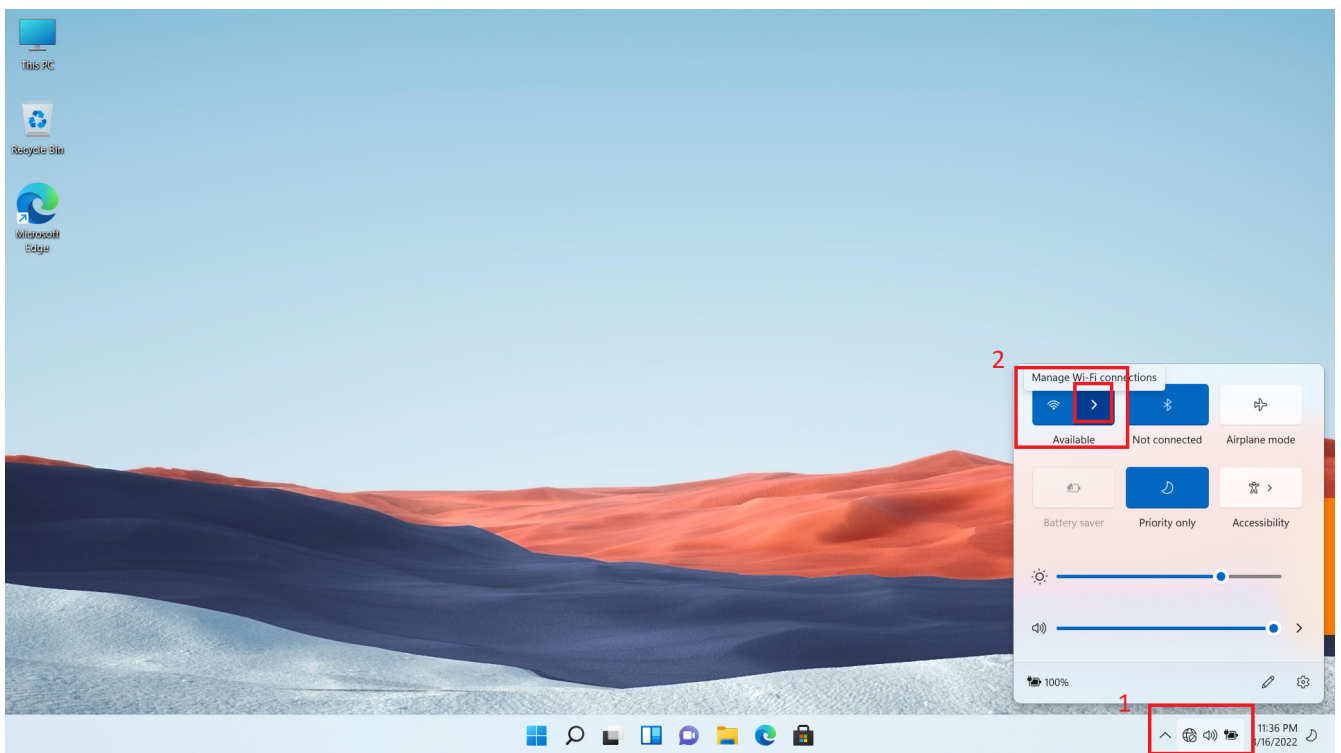
11. When using Windows 11 for the first time, firstly, please read the [Get Started] guide in the Start menu. It can help you master various features of Windows 11 quickly.



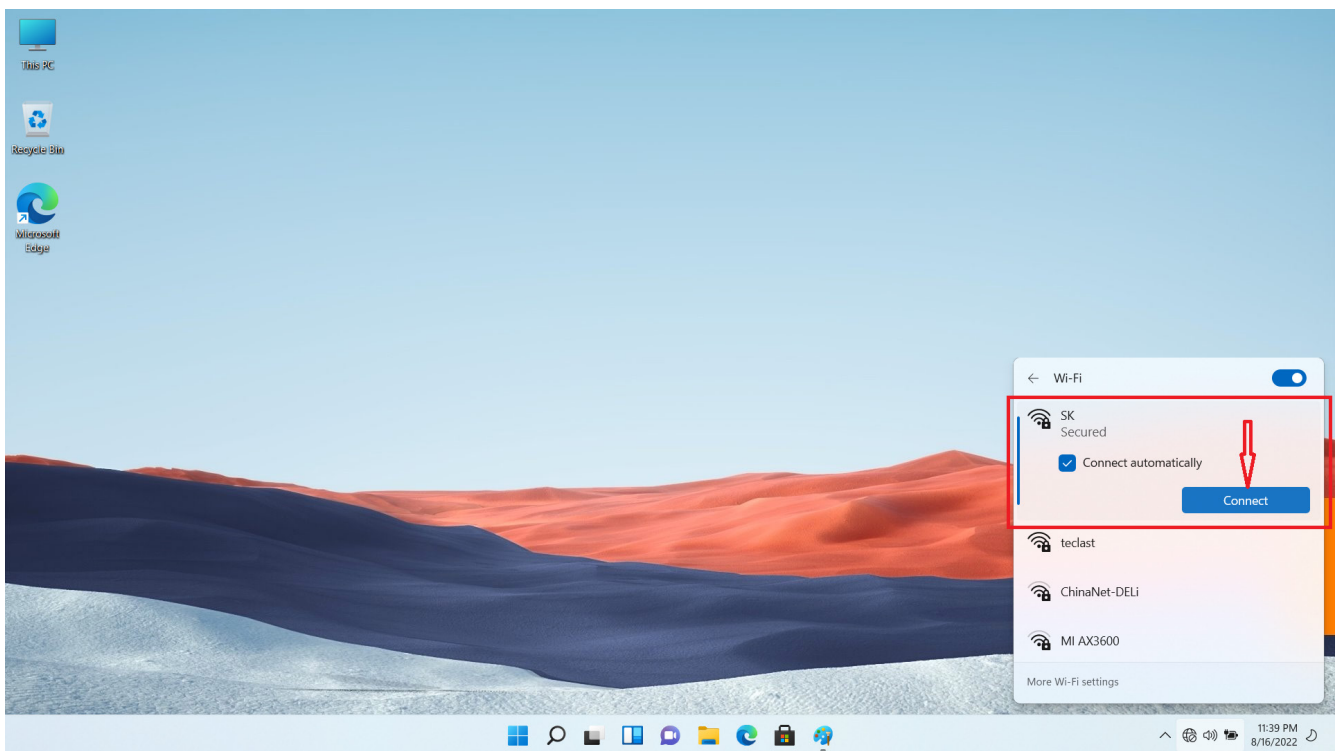
Windows Settings

1. Connect to a network

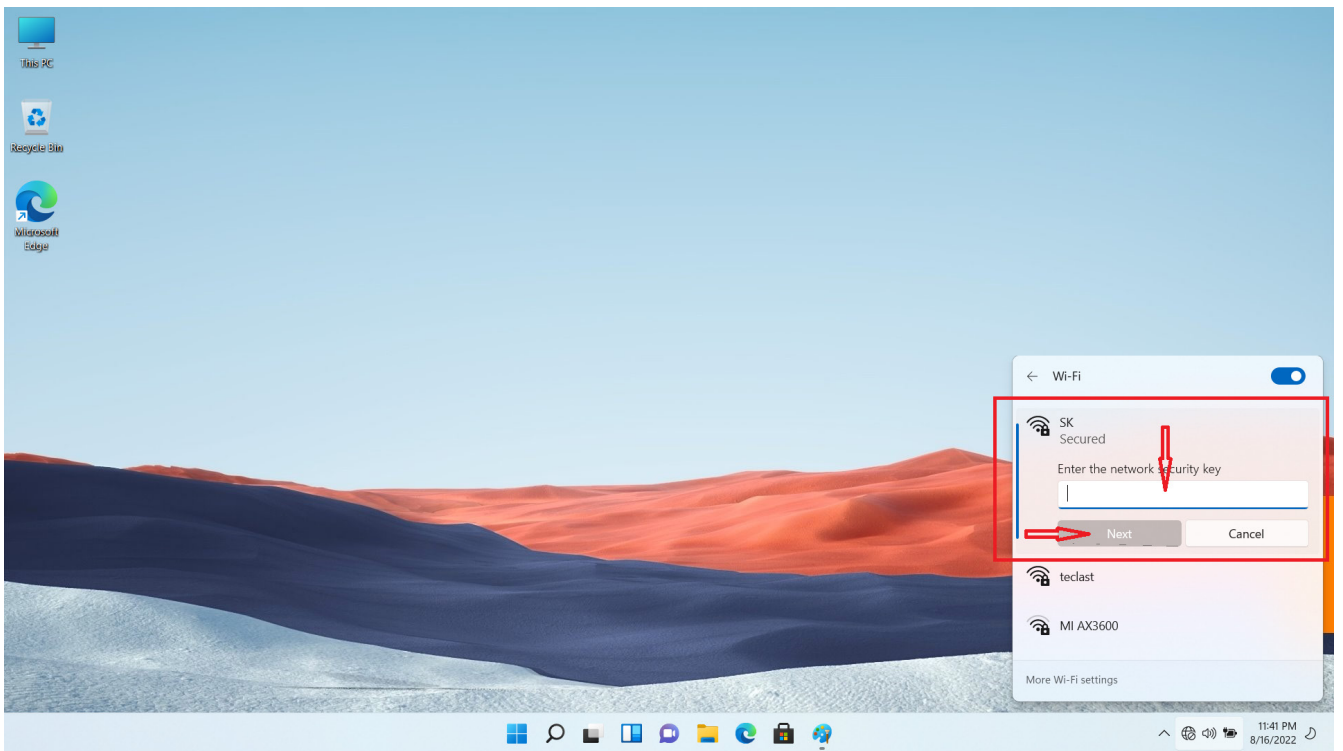
Click [Mark 1] in the taskbar in the bottom right of the desktop, and click the arrow in the [Mark 2] in the pop-up menu;



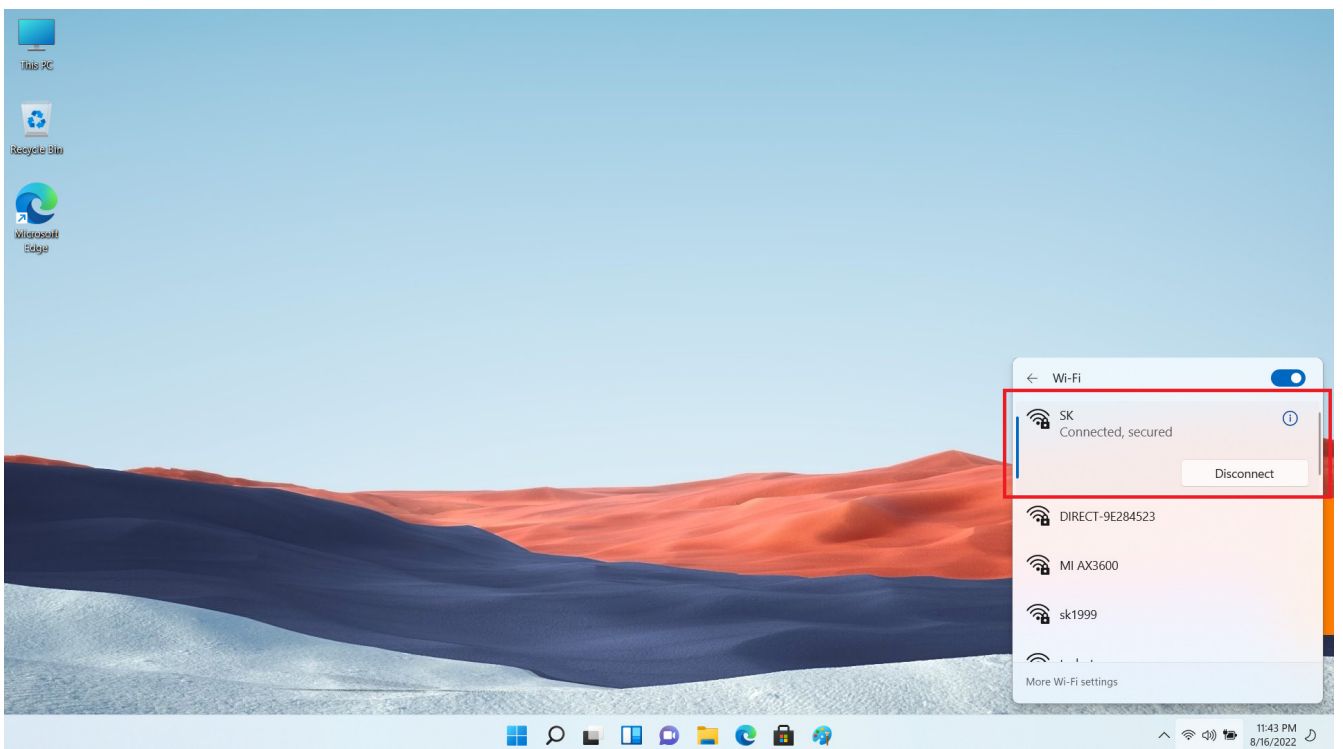
Scroll to find the WiFi to be connected and click [Connect];



Enter the network security key, and click [Next]; (no security key for open wireless networks)



When the password and other information are verified, the network is connected.

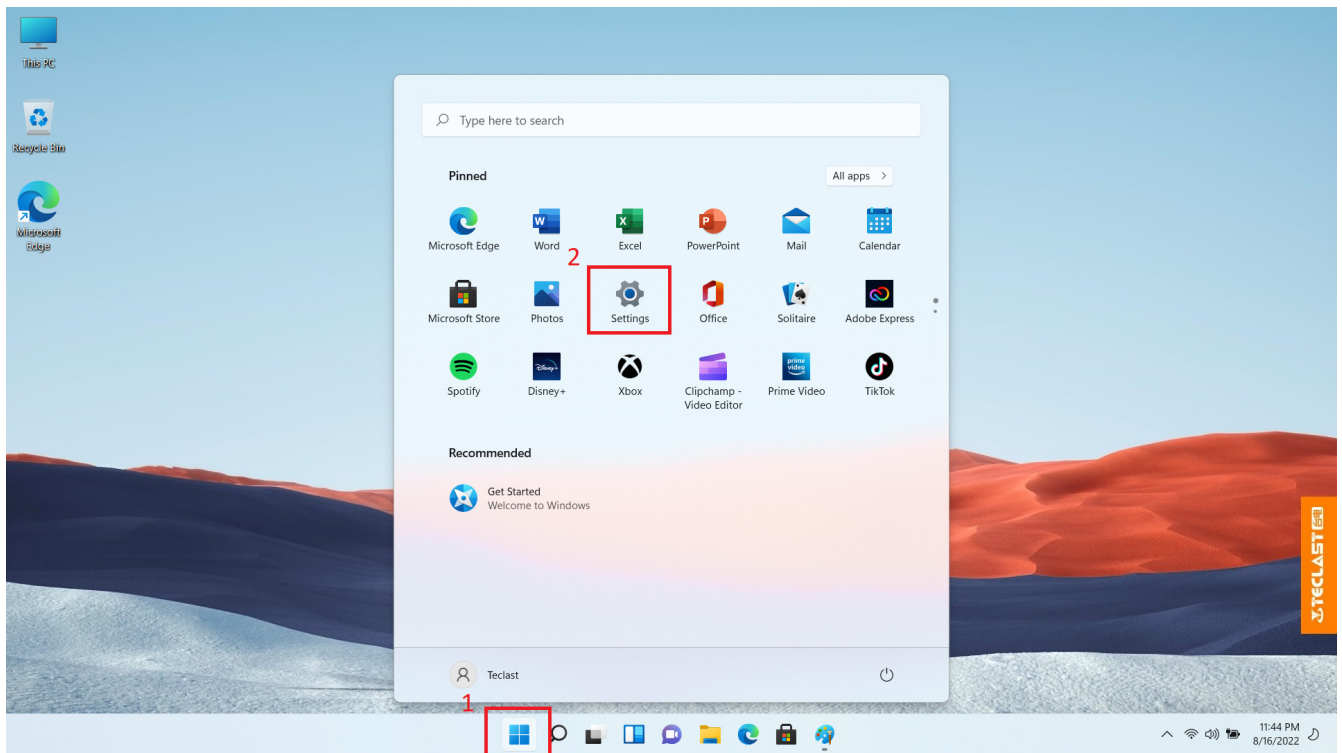


System Activation

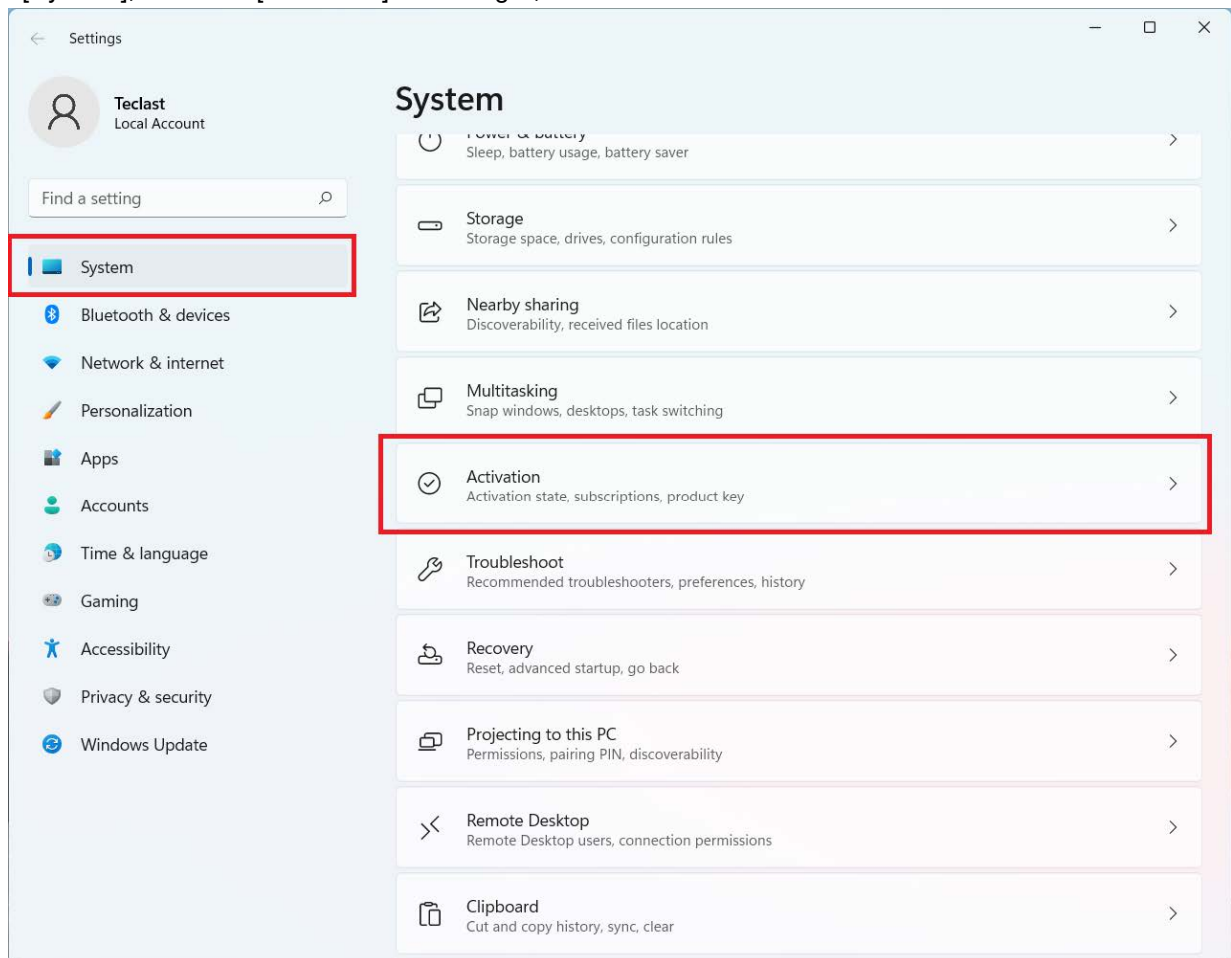
When the computer is connected to the Internet, it will connect to the Microsoft server and start to activate the system.

Follow the below steps to check the system activation status:

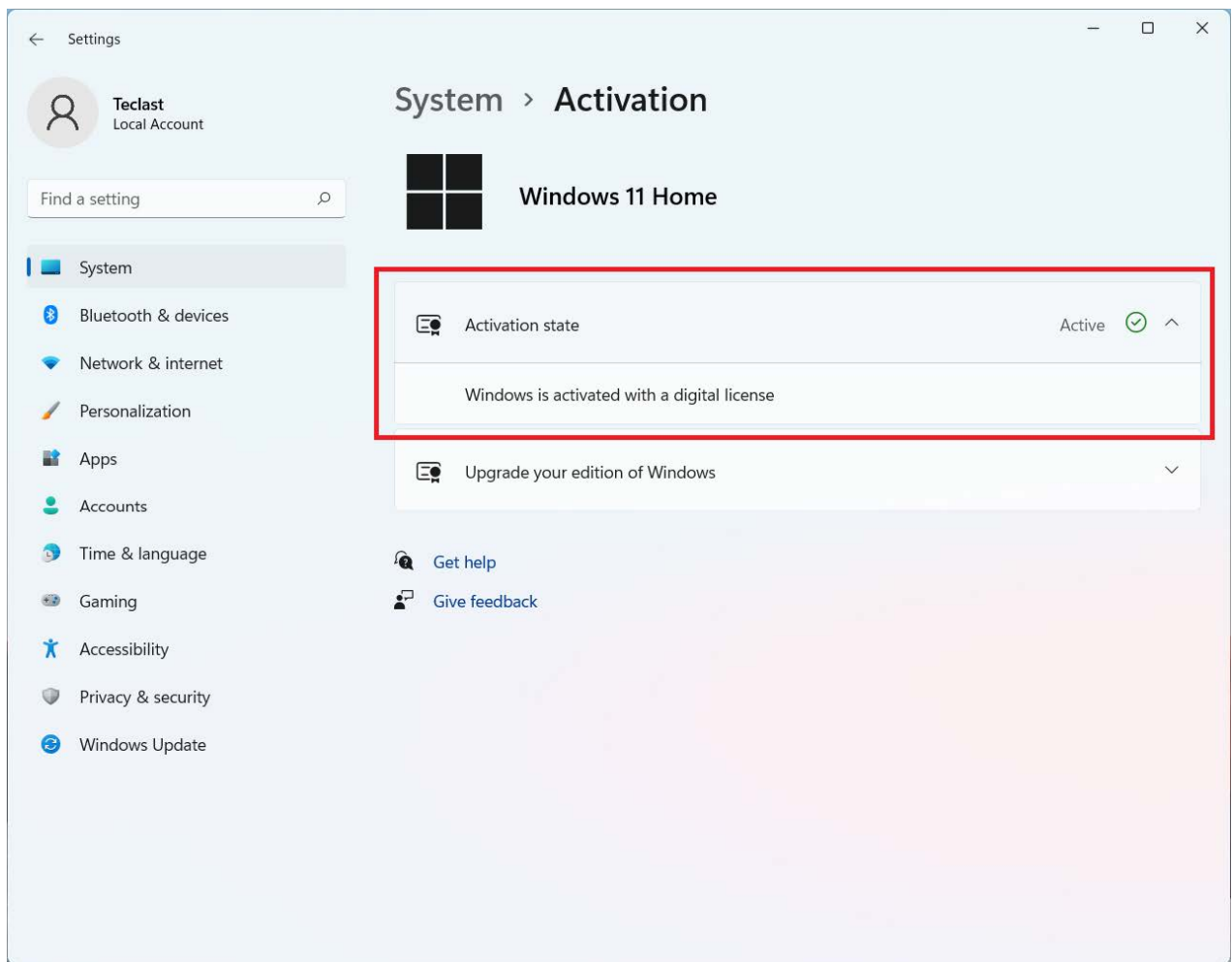
Enter the [Start] menu and click [Settings];



Select [System], and click [Activation] on the right;

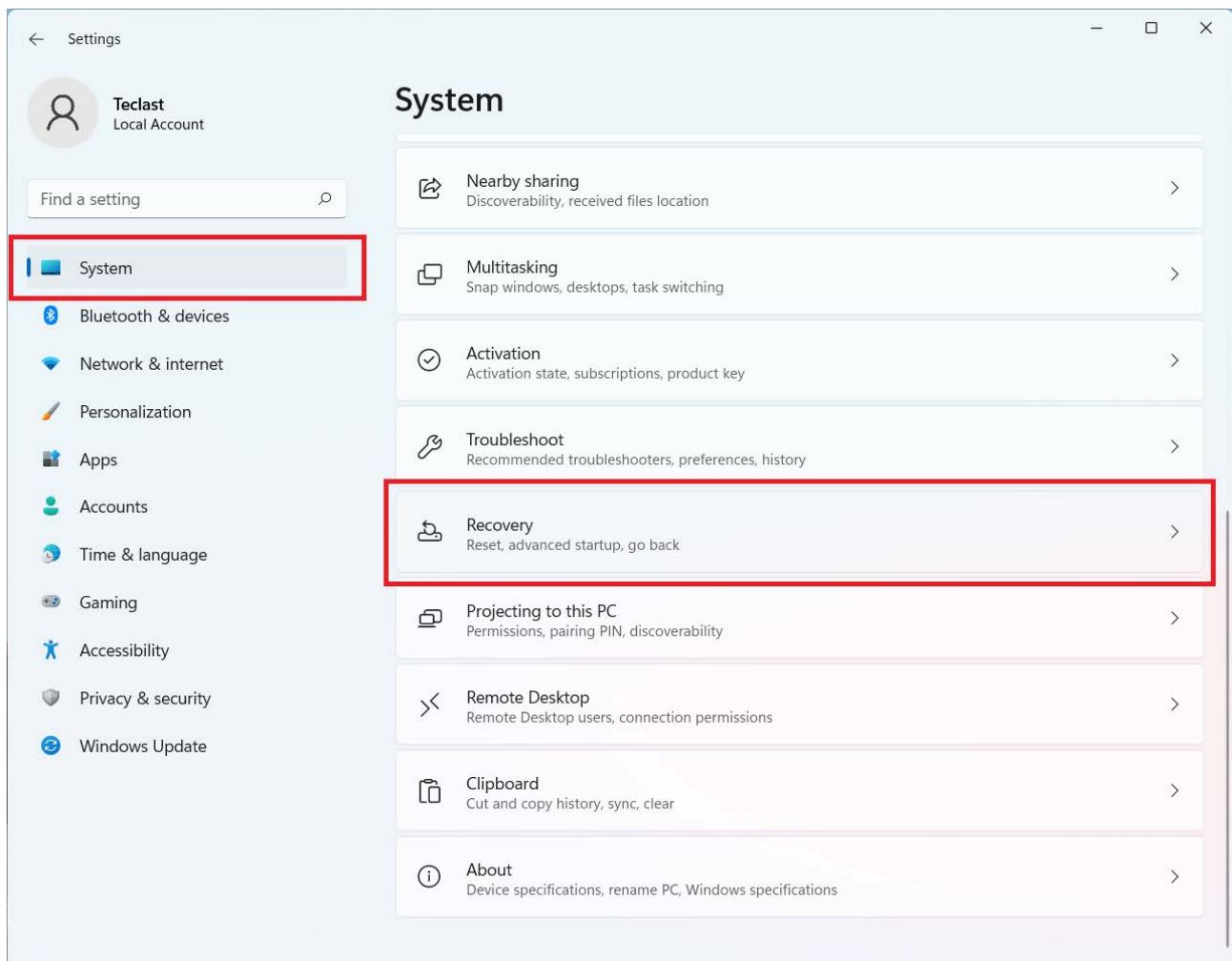


If the system has been activated, you can see the following information [Activation: Windows is activated];

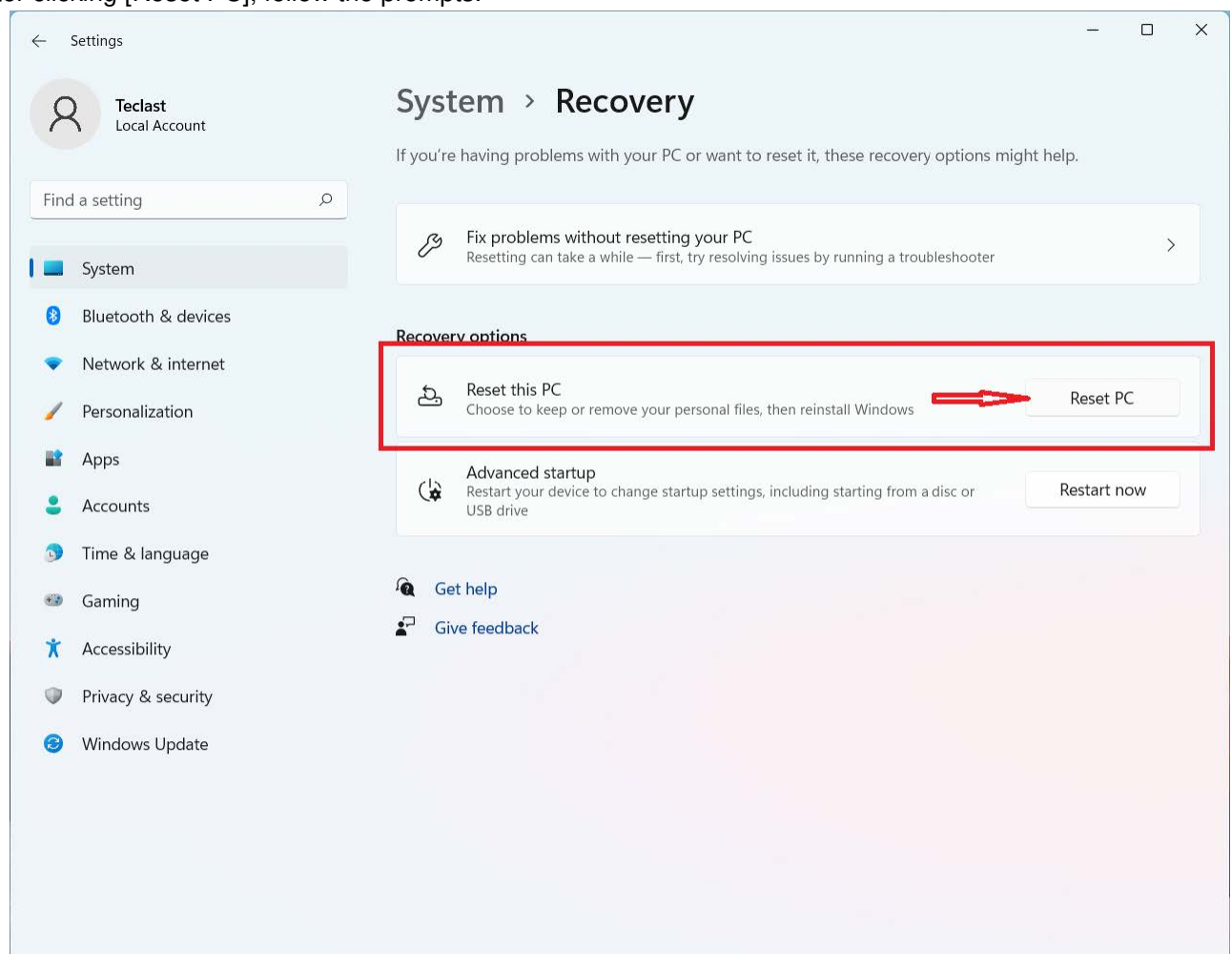


System recovery

For system recovery (factory reset), please follow the steps below. Enter [Settings] as described above; Select [System], and click [Recovery] on the right;

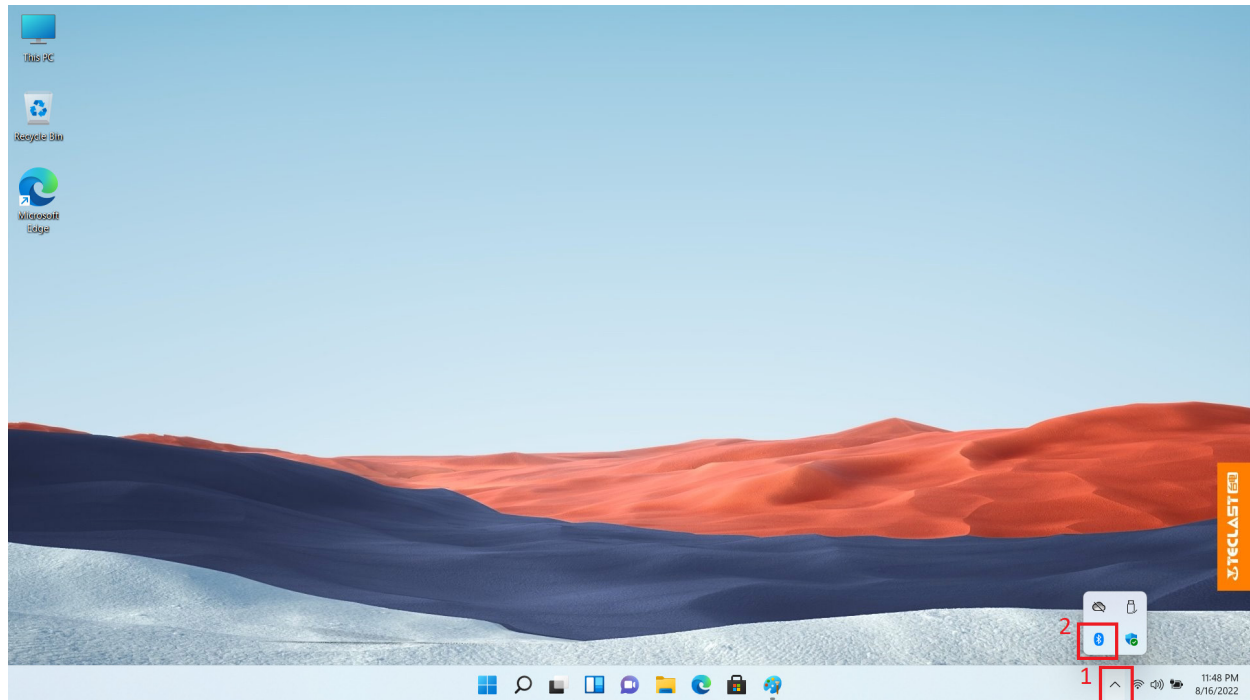


After clicking [Reset PC], follow the prompts.

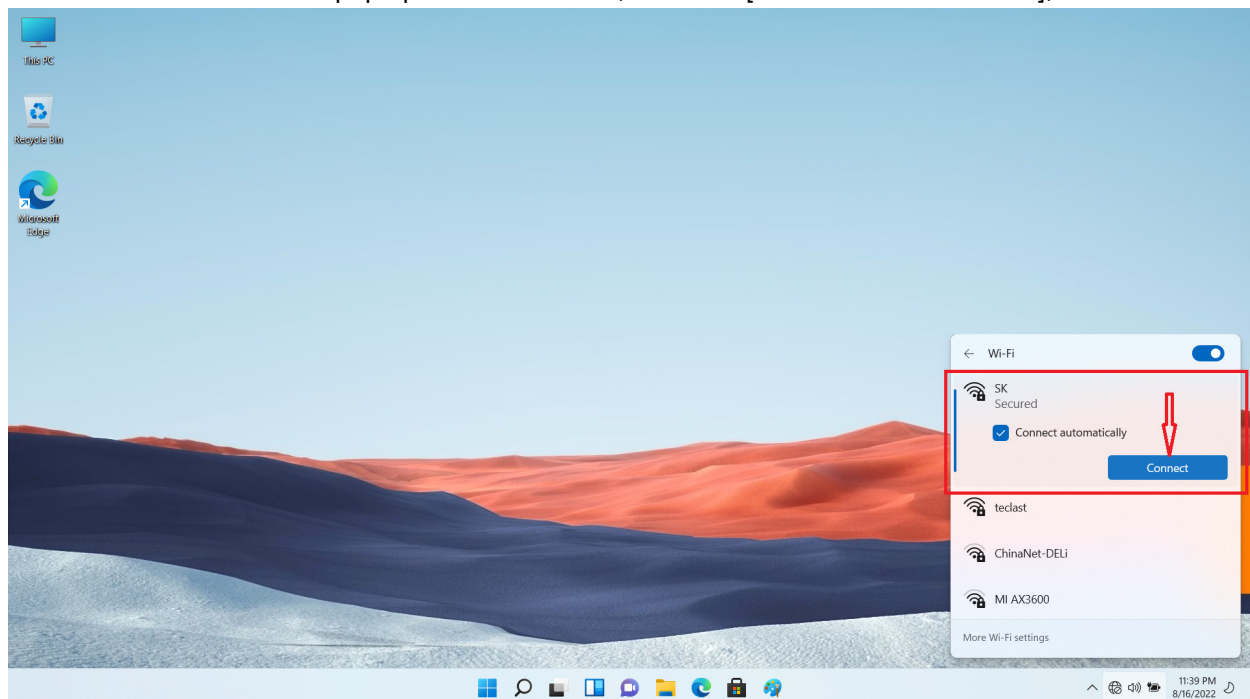


Connect Bluetooth

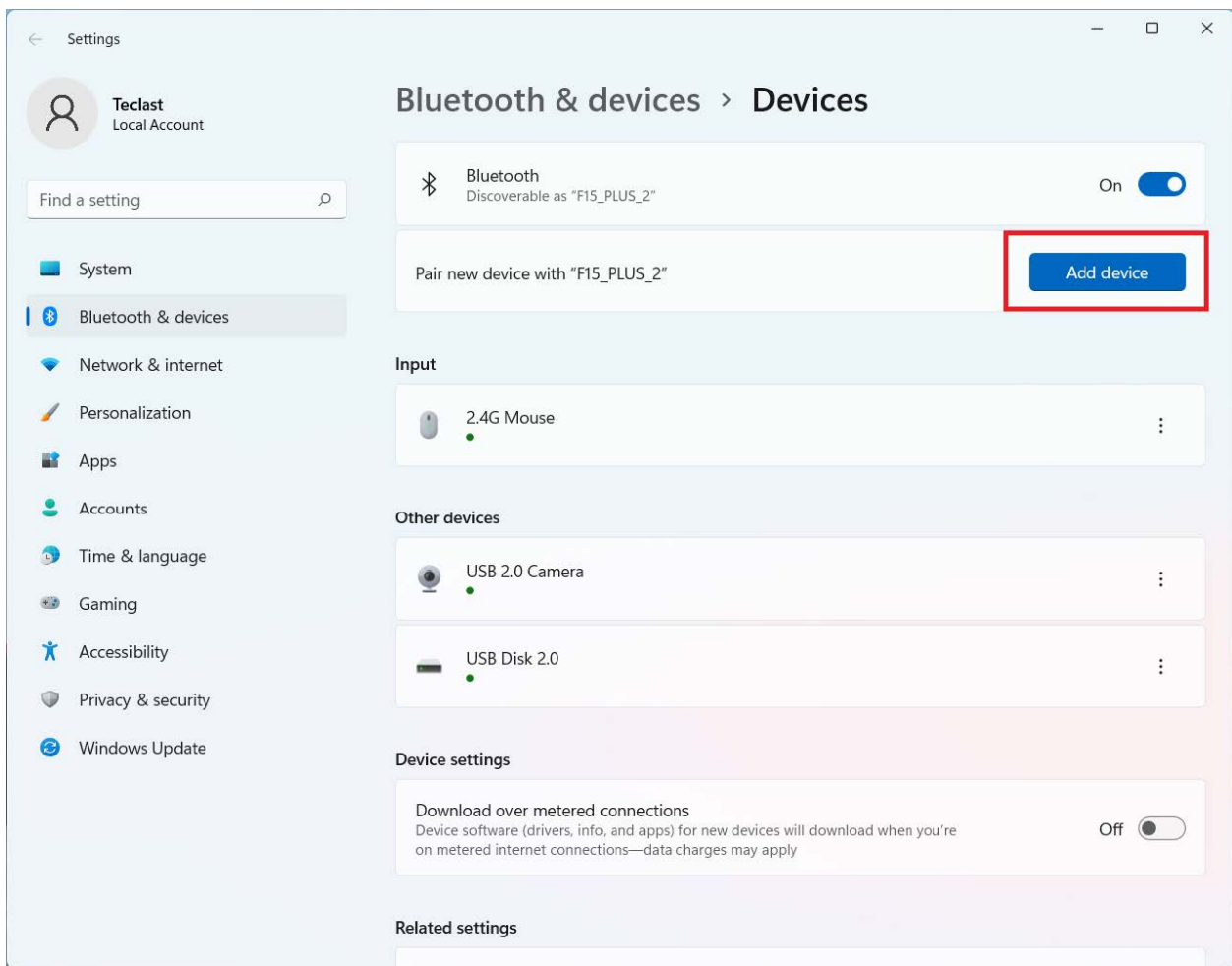
At the bottom right of the desktop, click the arrow in [Mark 1], and then the Bluetooth icon in [Mark 2] will pop up;



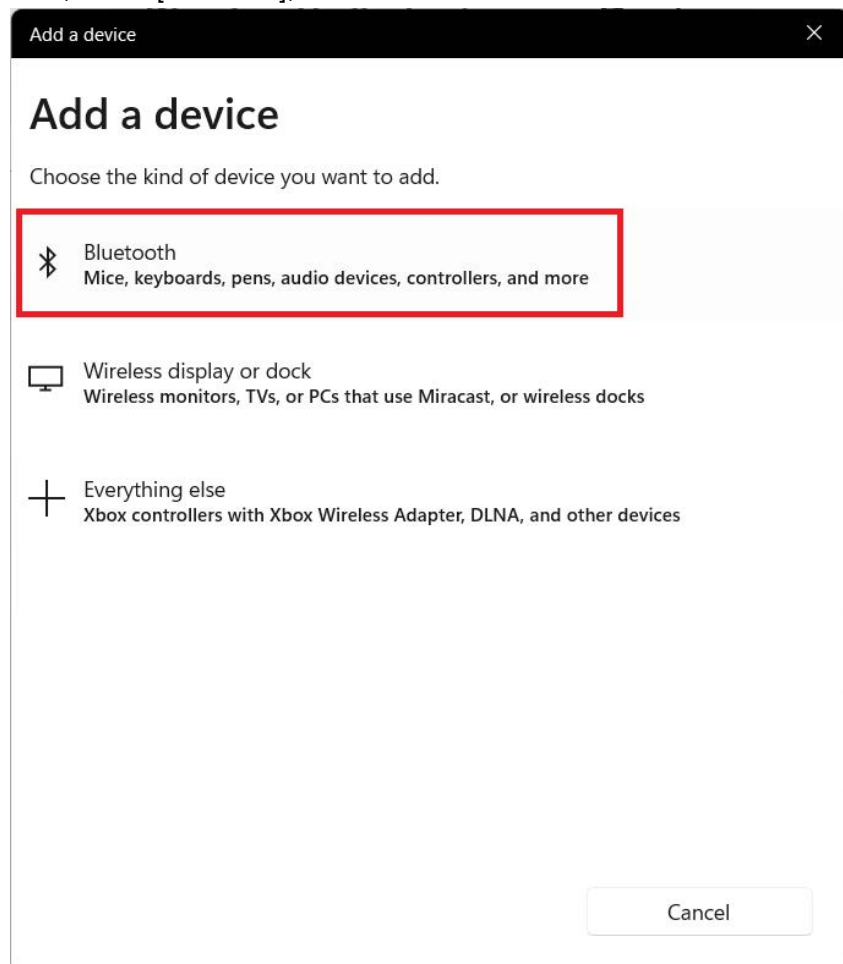
Right-click the Bluetooth icon to pop up the below menu, and click [Add a Bluetooth Device];



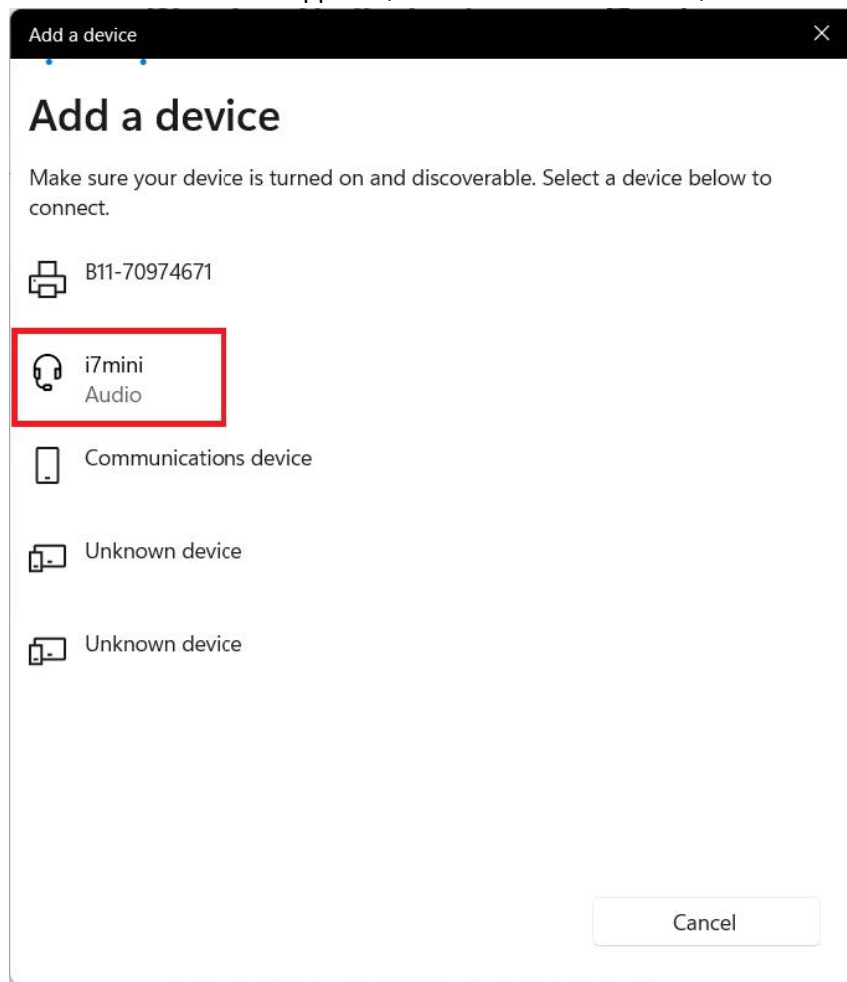
In the pop-up settings page, click [Add a device] on the right;



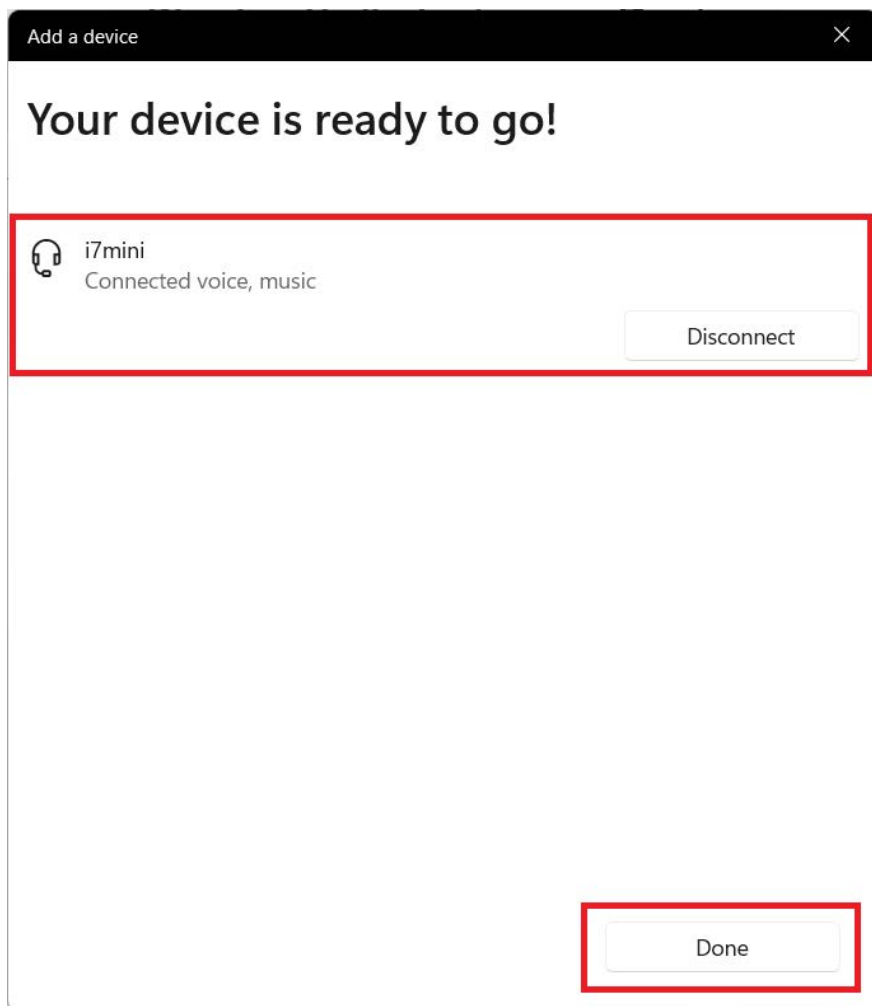
In the new pop-up window, select [Bluetooth];



Wait for the system to search for nearby Bluetooth devices (please set the needed Bluetooth device to pairing mode in advance). When the wanted device appears, click its name to connect;



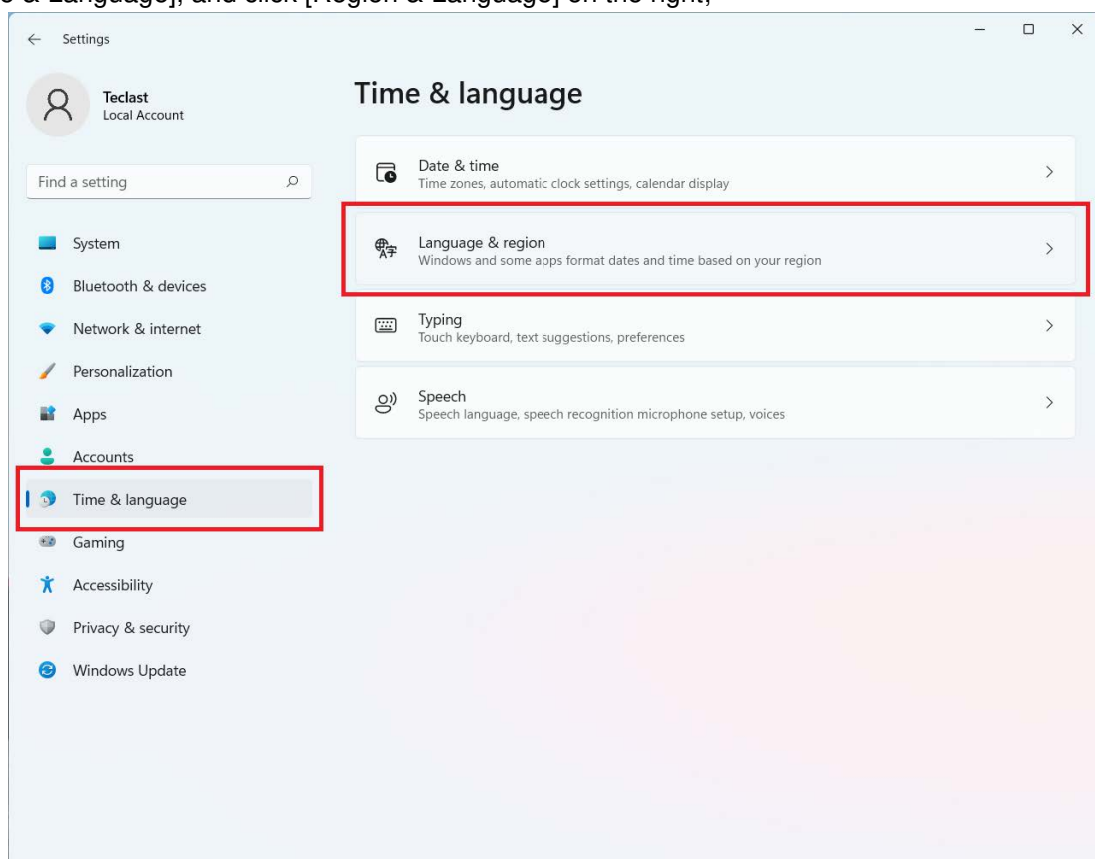
Thus, the system will automatically connect to that device; (If a pairing code is needed, please enter it based on the prompts.) When connected, click [Completed] to finish.



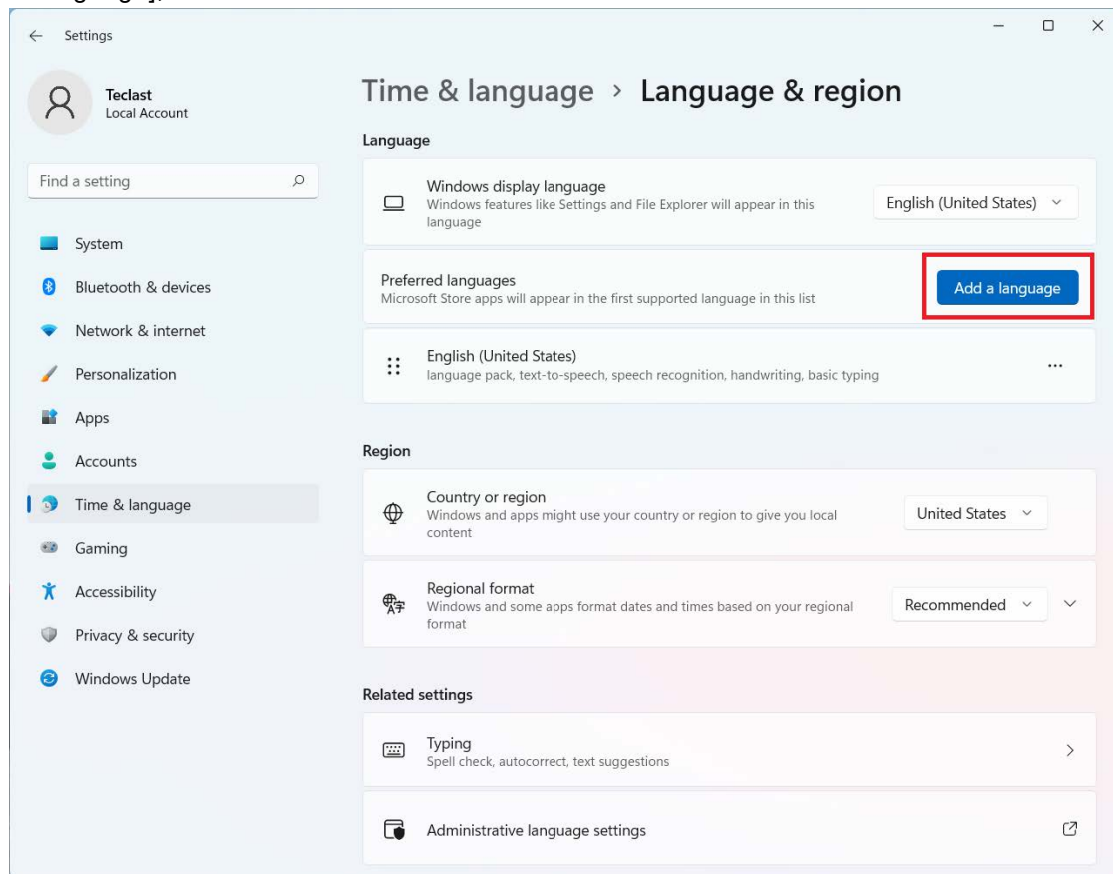
Change system language

Enter [Settings] as described above;

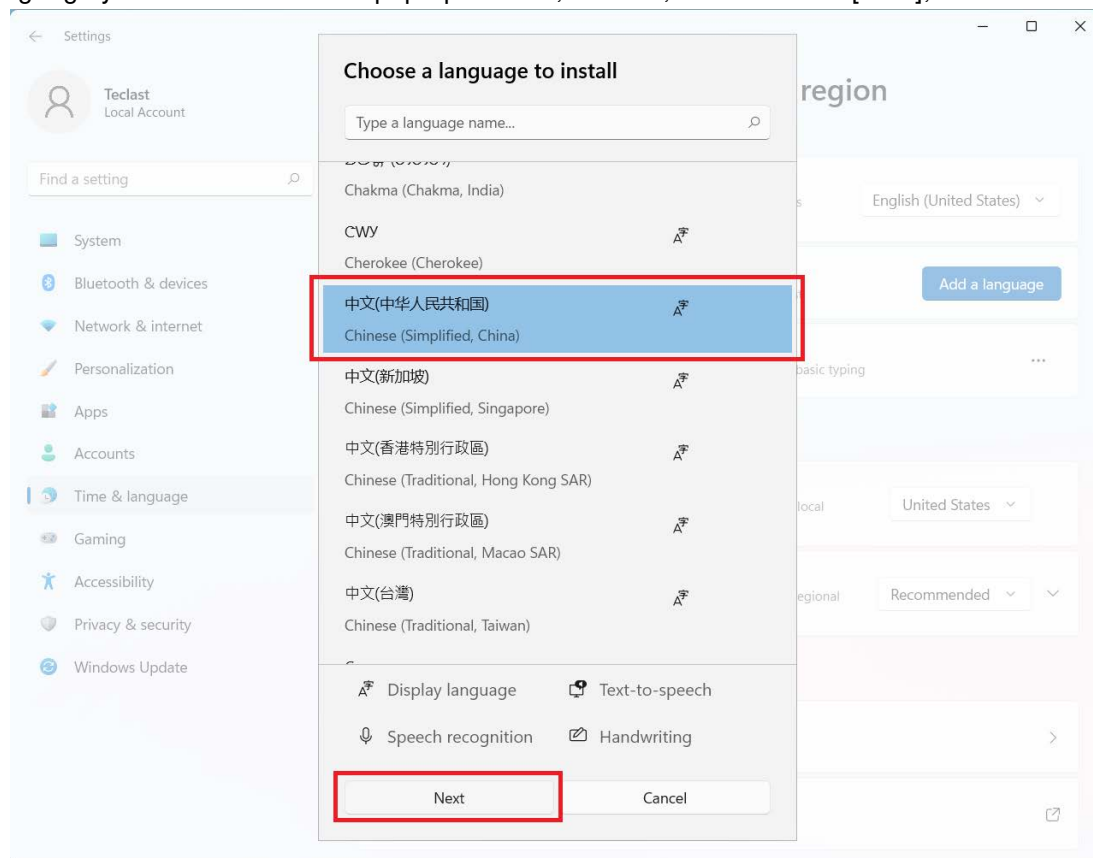
Enter [Time & Language], and click [Region & Language] on the right;



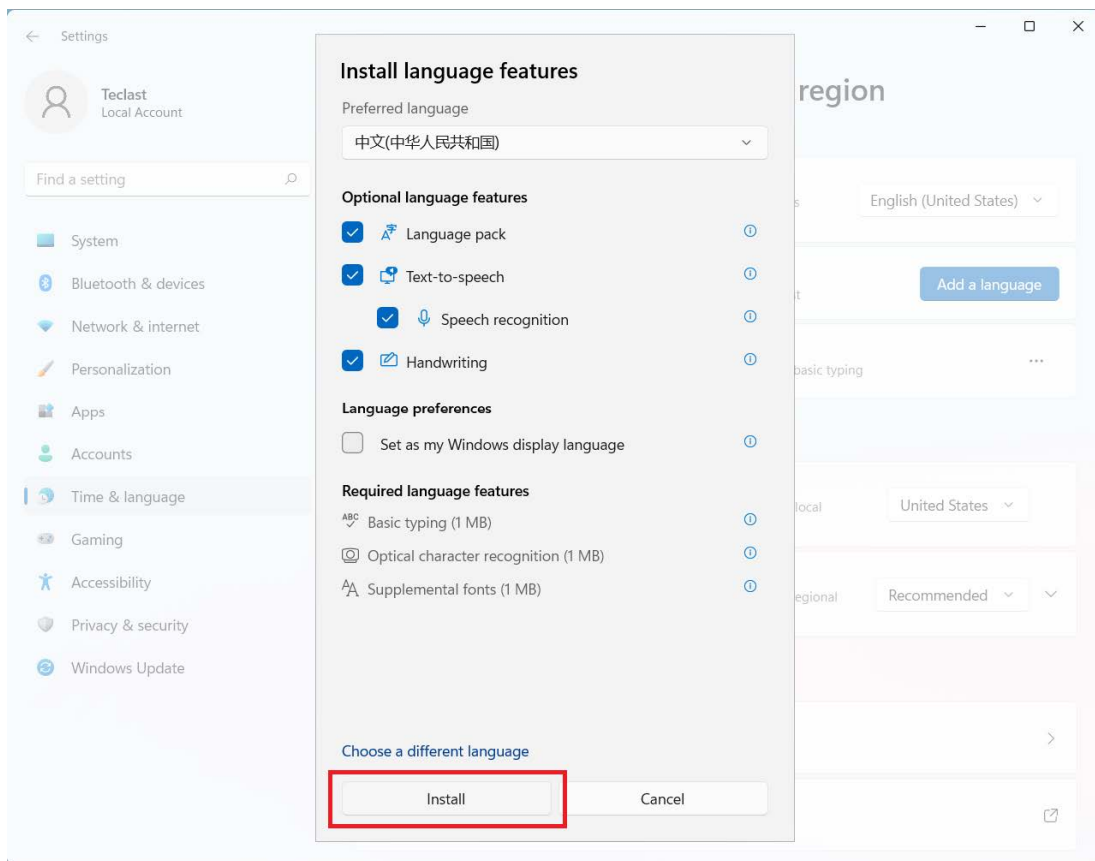
Click [Add a language];



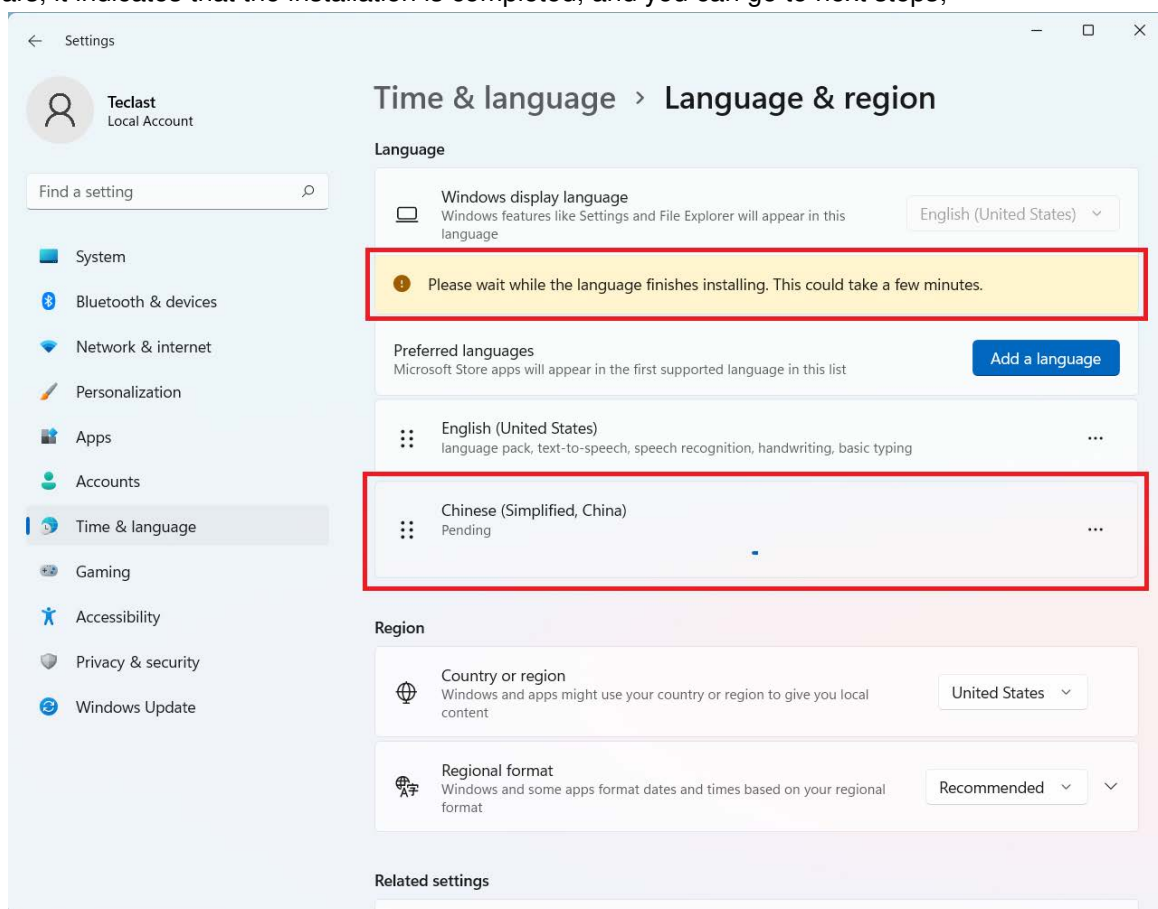
Find the language you want to add in the pop-up window, select it, and then click [Next];



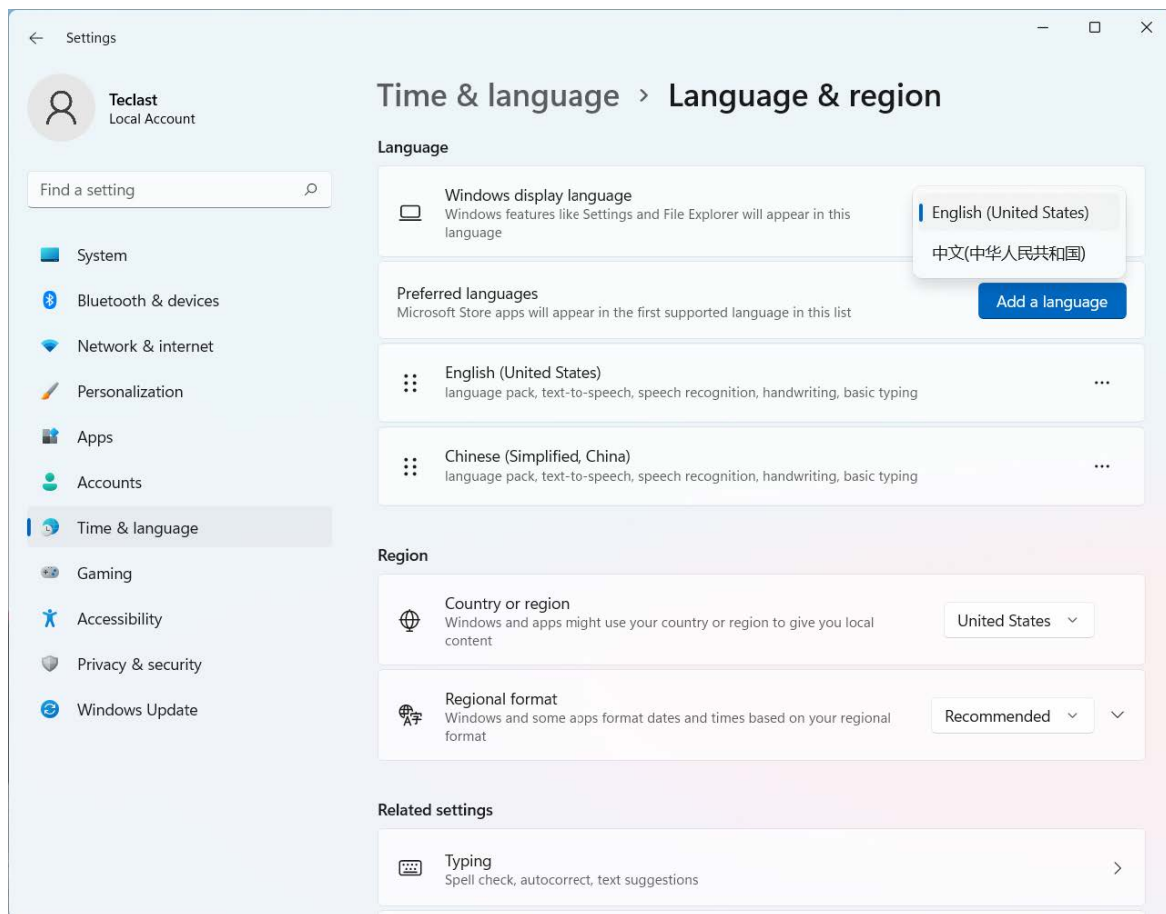
Choose [Optional Language Features] as needed, and click [Install];



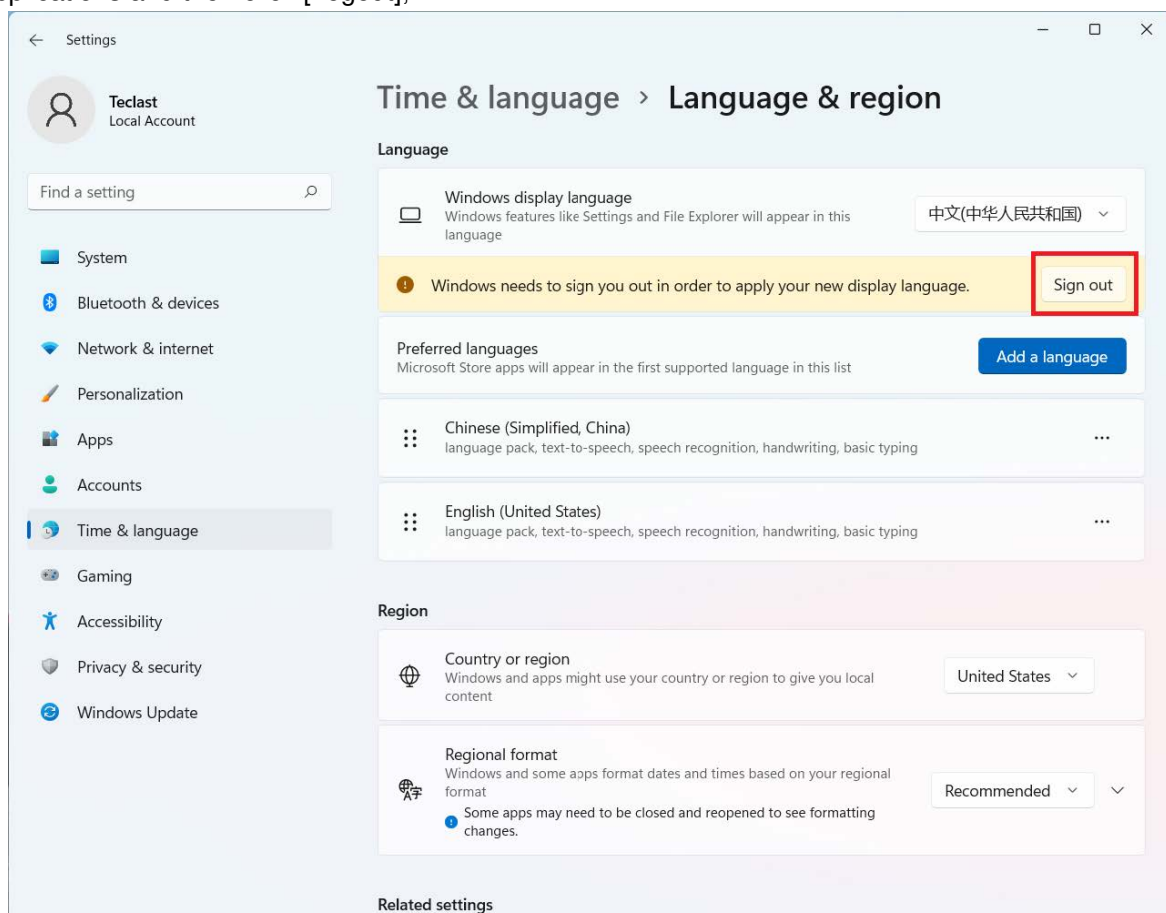
The language pack should be downloaded and installed online, and the installation time depends on the connected network, please wait patiently; while installing, the following interface will appear. If the yellow warning disappears, it indicates that the installation is completed, and you can go to next steps;



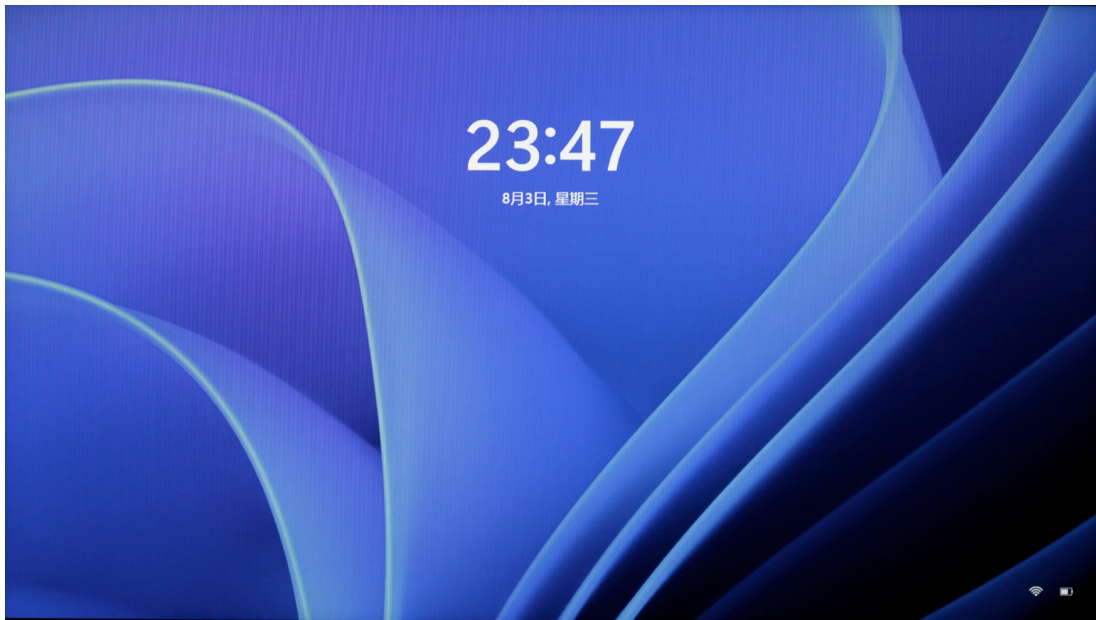
When the language pack is installed, [Windows Display Language] will be optional, you can choose a language;



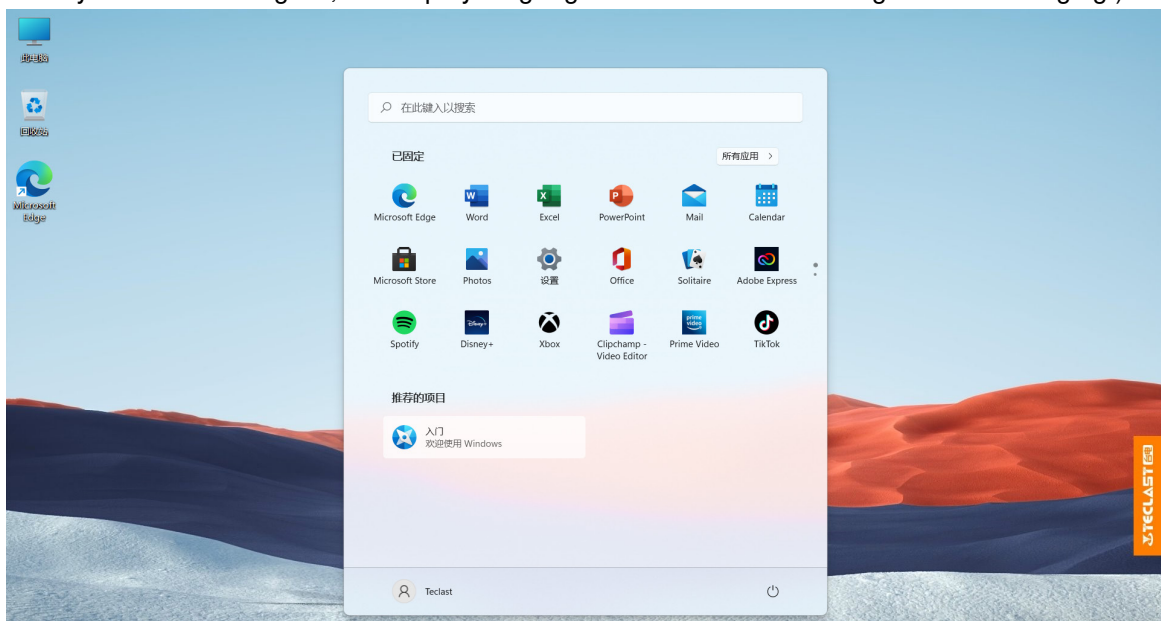
When a language is selected, you need to log out and then log in again to display the new language. Please save other applications and then click [Logout];



When the system is logged out, please log in again;

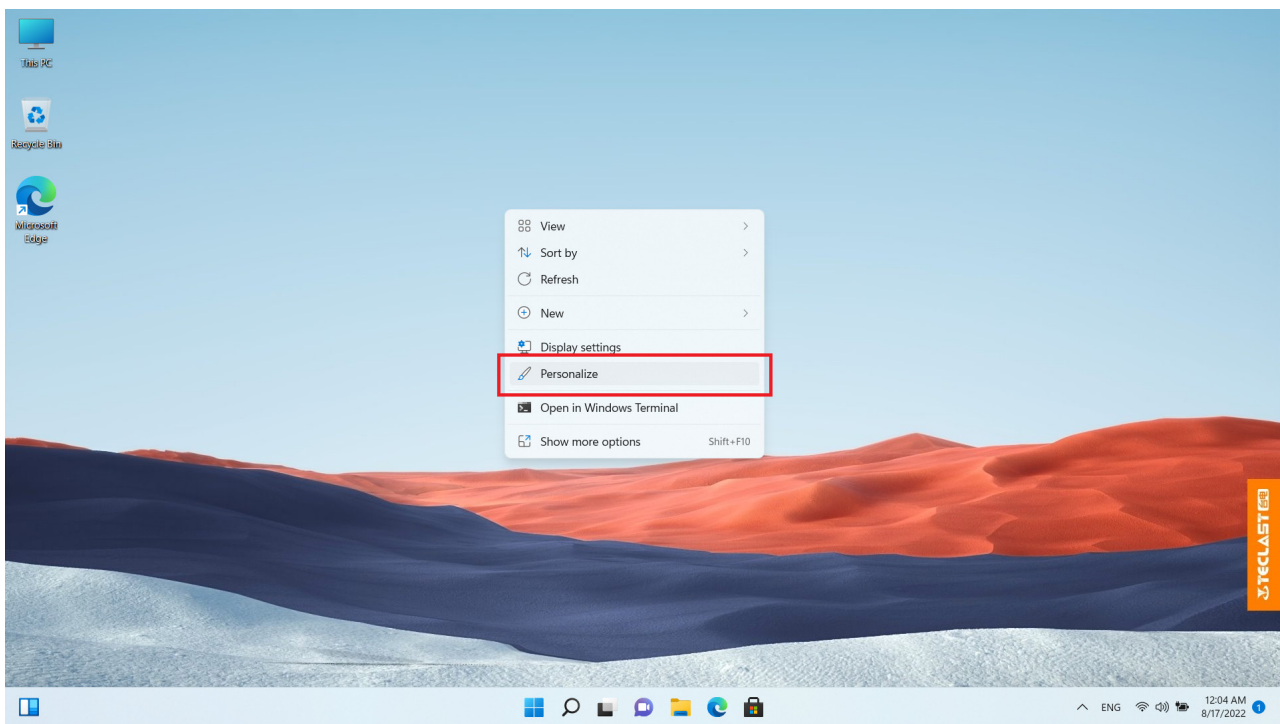


After logging in, the system language is changed to the set language. (Since some settings and application names are only available in English, the display language for them will still be English after changing.)

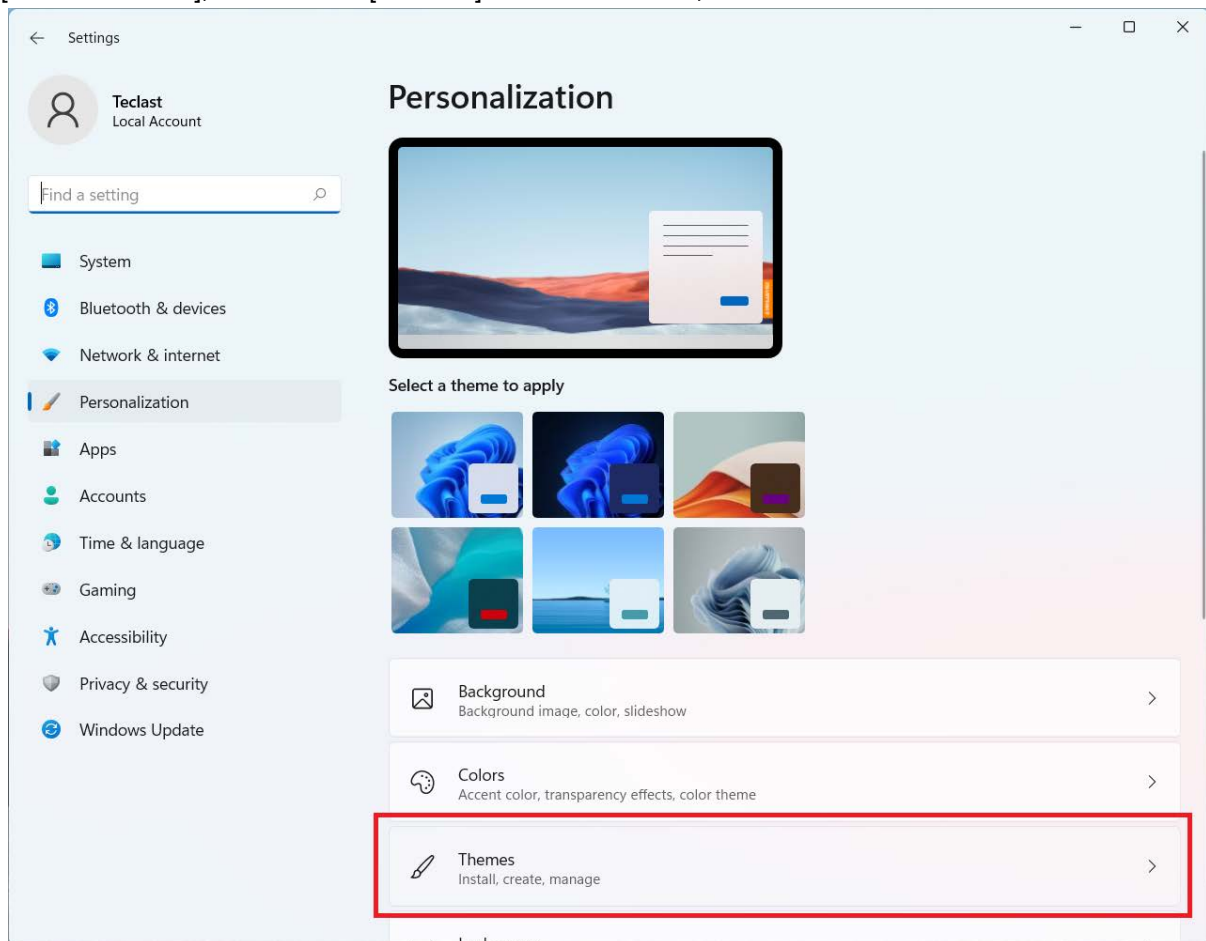


Desktop icon setting

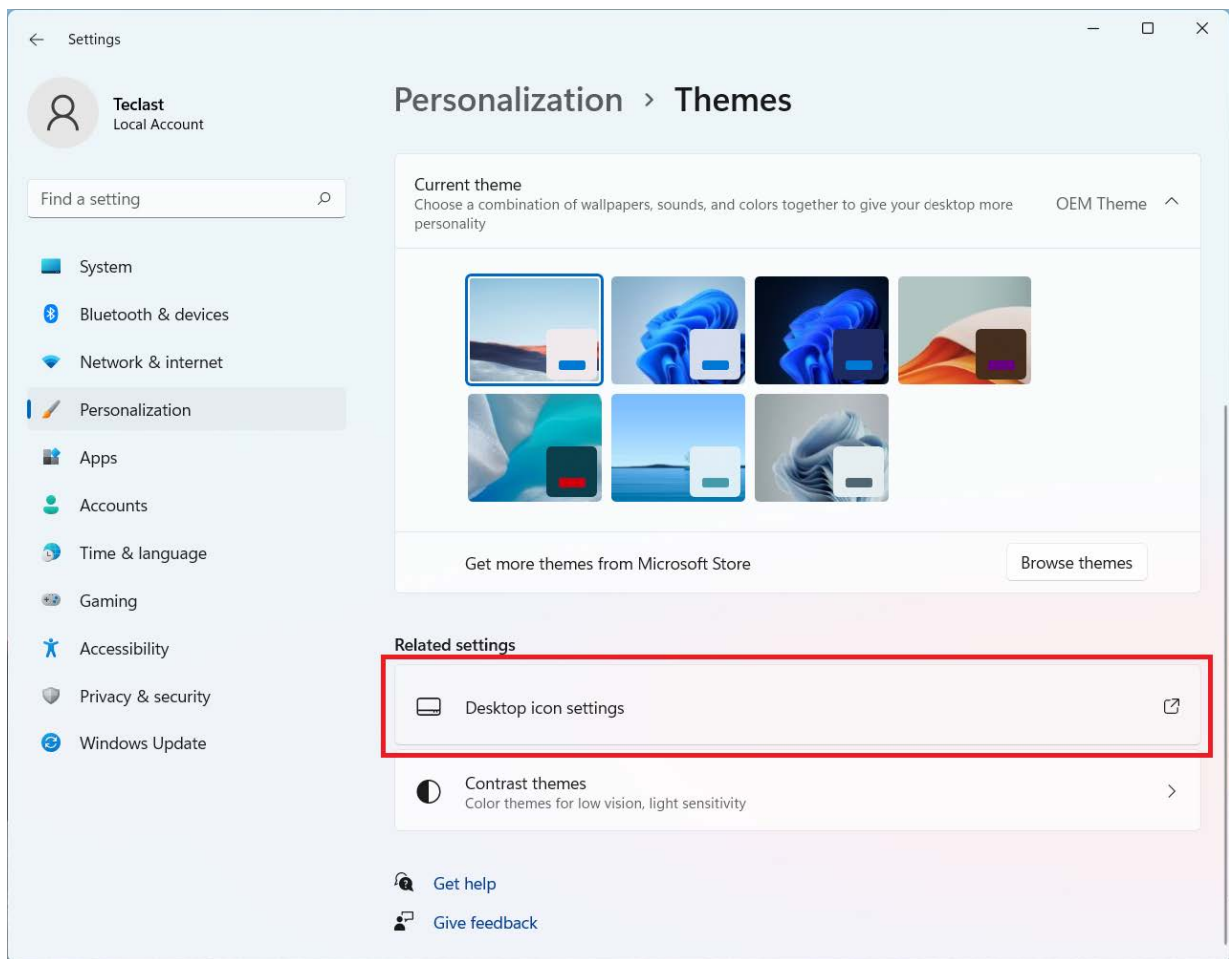
Click a blank space on the desktop with the [right mouse button]. The following dialog box will pop up. Choose [Personalize];



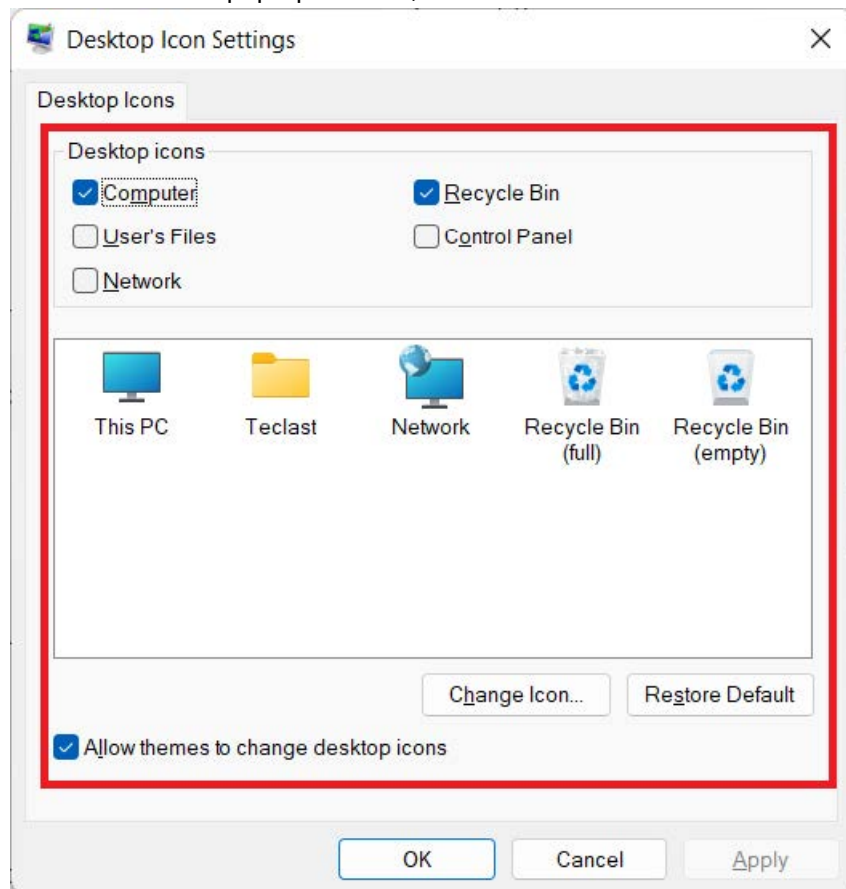
Enter [Personalization], scroll to find [Themes] and click to enter;



Scroll to find [Desktop icon settings] and click to enter;

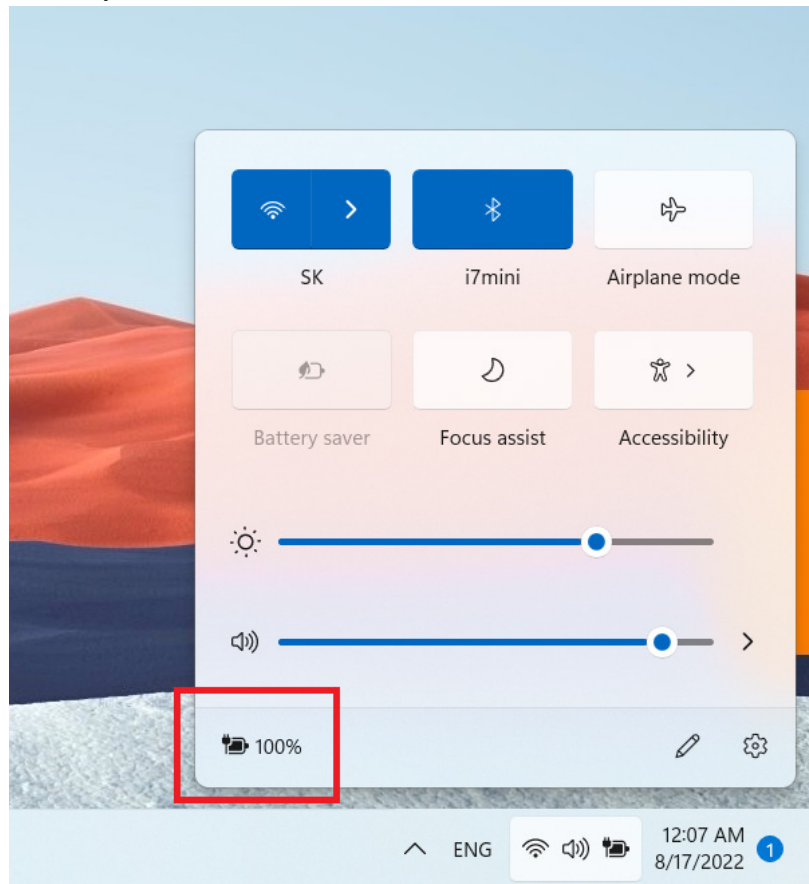


Set the desktop icons as needed in the pop-up window;

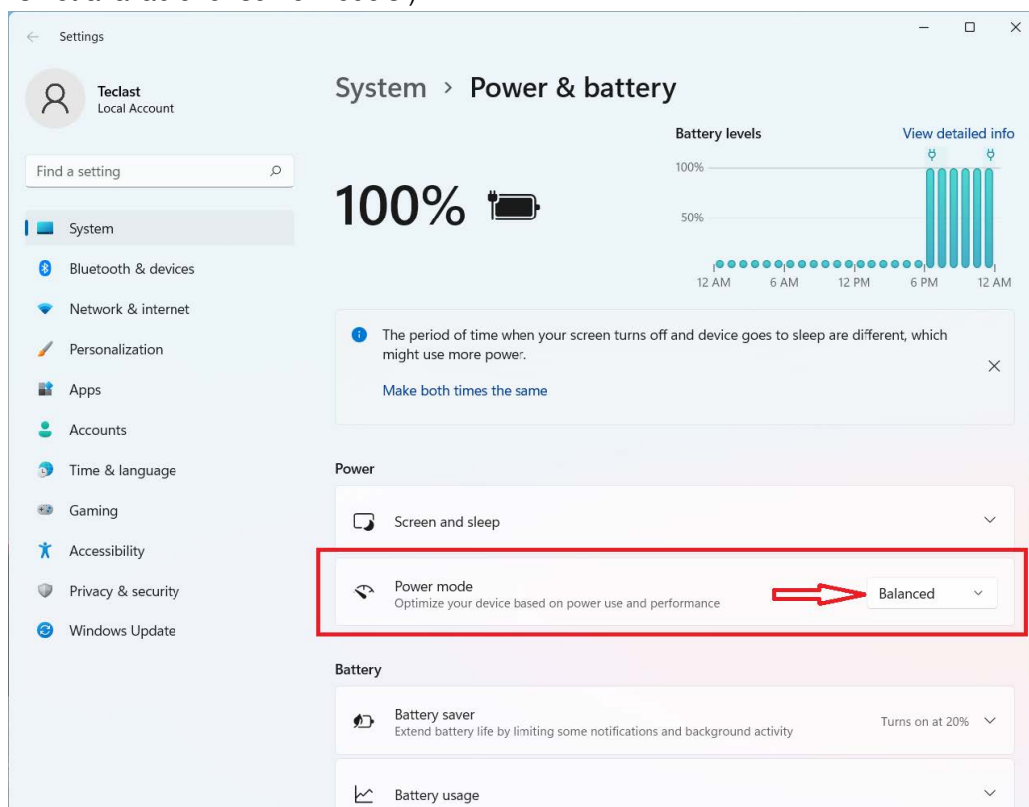


Charge & power management

When the battery is too low, a low battery warning will pop up. Please charge the computer in time, otherwise, it will automatically go to sleep. Connect to the power adapter, and the charging indicator light is always on, indicating that it's charging. If the light is off, it indicates that it's not charging or fully charged. The battery charges faster when the computer is shut down or goes to sleep. Click the batter icon in the taskbar in the bottom right of the desktop to check the battery level;

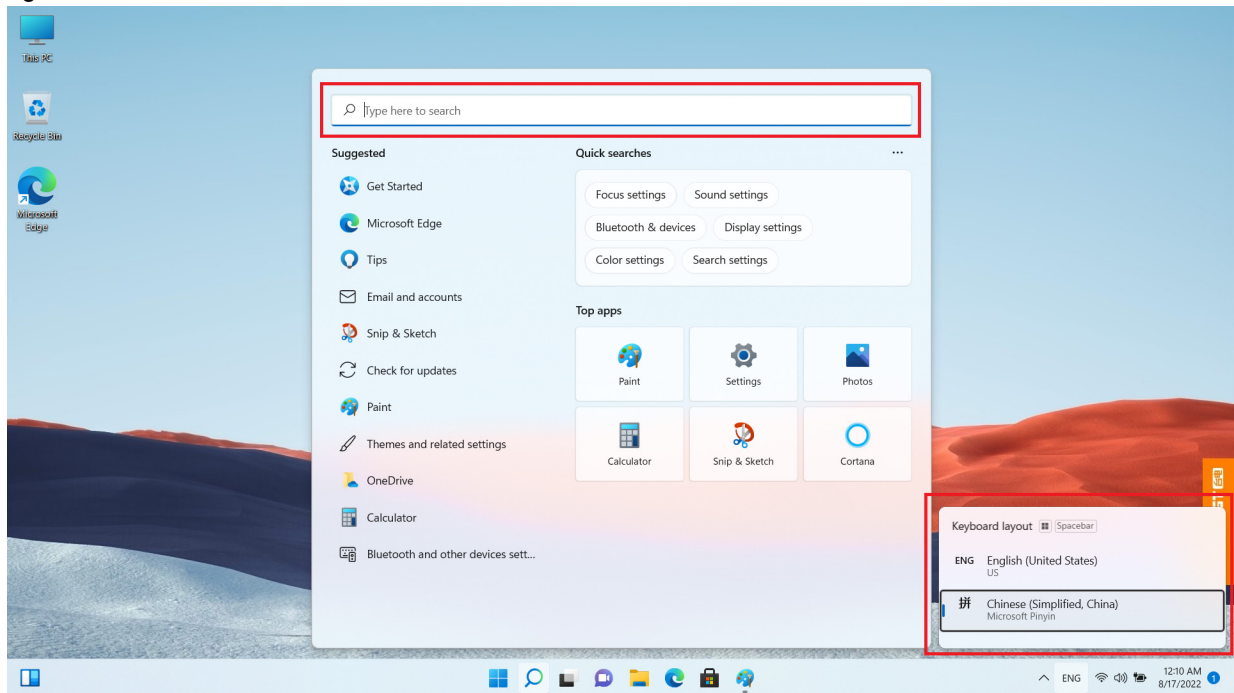


Click the battery level icon in the pop-up menu to enter the settings page of power and battery management;
[Balance: balance between system response and power consumption; best energy efficiency: prefer power saving, slower system response; best performance: prefer performance, reduced battery life with increased heat;].
(This function is not available for some models.)



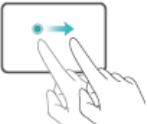
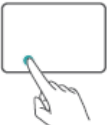
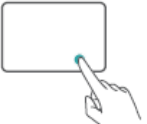



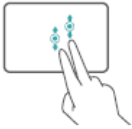






Switch between languages

When selecting an input box, press the [Windows key] and [Spacebar] on the keyboard to switch between languages;



Touchpad gestures

| | |
|---|---|
|  | Tap with one finger: equivalent to the left mouse button |
|  | Double-tap with one finger: equivalent to double-clicking the left mouse button |
|  | Swipe with one finger: move the cursor on the desktop |
|  | Left-click: equivalent to clicking the left mouse button |
|  | Right-click: equivalent to clicking the right mouse button |
|  | Tap with two fingers: equivalent to clicking the right mouse button |

| | |
|---|---|
|  | Swipe vertically with two fingers: scroll the screen or document |
|  | Pinch open or stretch out with two fingers: to zoom in/out pictures, web pages, etc. when browsing. |
|  | Tap with three fingers: open Search |
|  | Swipe up with three fingers: show all open windows |
|  | Swipe down with three fingers: show the desktop |
|  | Swipe left or right with three fingers: switch between open apps |
|  | Tap with four fingers: quickly open the Action Center |

Switch between shortcut keys and function keys

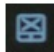
In the function key mode, keys such as F1 and F2 have different functions when running different software.

To use F1, F2, etc. as function keys, you can:

Press the Fn key while pressing one of the F1 – F12 keys to realize various functions. This may be different for different computer models. You can contact customer service for more information.

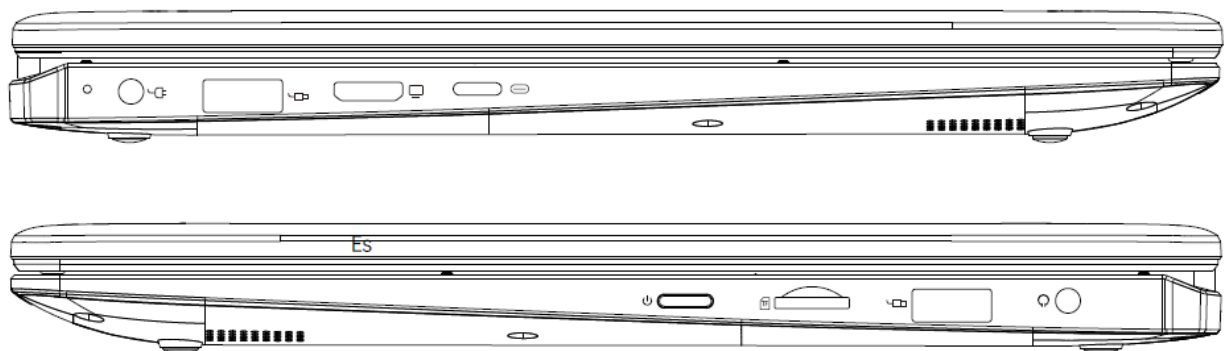
Disable or enable the touchpad








Please use it according to the silk-screened function (usually in a color different from the regular keys) on the keyboard;

Take the F15 Plus2 model as an example. Its touchpad function key is silk-screened  on the Esc key, which means by pressing the [Fn] and [Esc] keys, you can disable and enable the touchpad;



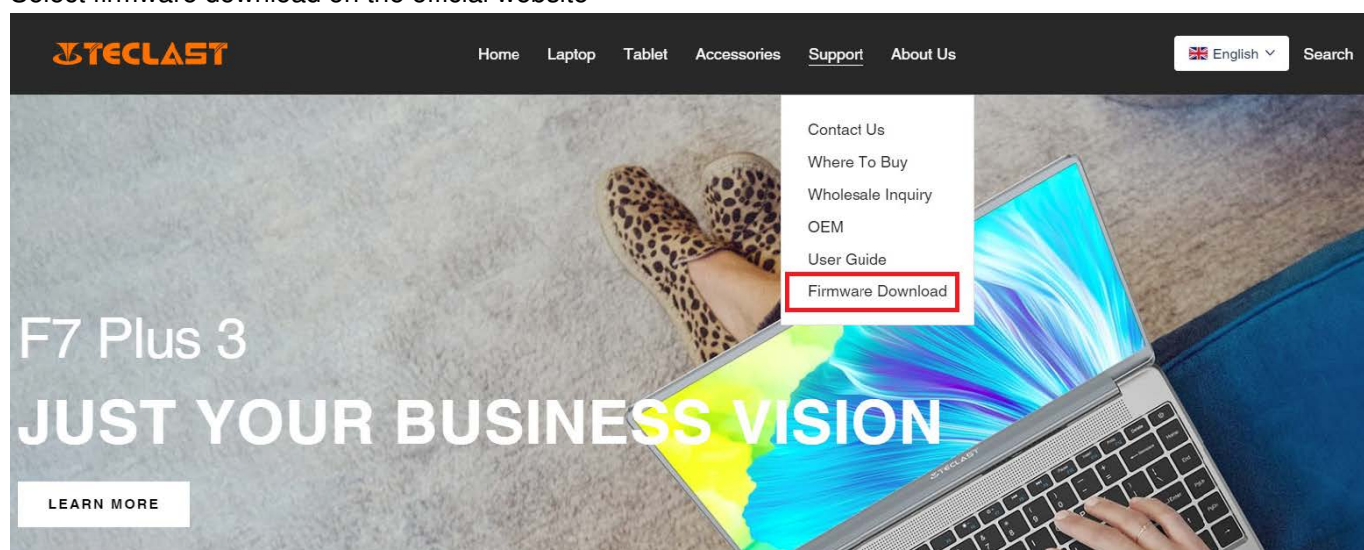
Description of interface signs



| | |
|---|---|
|  | Power button |
|  | Standard USB interface |
|  | Power interface, connected to a 3.5 mm DC charging interface |
|  | HDMI interface, can be connected with a corresponding HDMI cable for displaying |
|  | Type-C interface, can be connected with a type-c cable |
|  | TF card slot, a TF card can be inserted for capacity expansion |
|  | A headphone jack, can be used with a 3.5mm headphone plug |

Firmware download

Select firmware download on the official website



Input the product's ID number in the download interface to find the right firmware, e.g. G1F1:



Search by Product ID Number:

After entering, you can see the download link list of the firmware:

Search by Product ID Number:

| Date | Name | Description | Version | Firmware |
|------------|---|-------------------------|-------------------------|--------------------------|
| 2022-07-20 | F15Plus2(G1F1)_Win11_M | Windows11 | V1.1_20220711 | Download |
| 2022-04-25 | Windows upgrade Video | | | Download |
| 2022-01-23 | Recording repair Driver | Recording repair Driver | VER:1.0.3.0/VER:1.0.4.2 | Download |
| 2021-08-30 | F15Plus2(G1F1)_Win10_RS8_M_V9.0_20210706_Driver | | V9.0_20210706 | Download |
| 2021-08-30 | F15Plus2(G1F1)_Win10_RS8_M_V9.0_20210706_SZ | | V9.0_20210706 | Download |

After-sales service contacts

If you encounter unsolvable product issues, please email customersupport@teclast.com. The email must contain the following 3 things, otherwise, the after-sales service will not be provided.

1. The name of the platform where you purchased the product (if it is a country-based platform, please provide the name of the country);
2. The product model, four-digit ID number, and SN number (as shown in the picture below);
3. Purchase order number.



- All the above information must be included in the email, otherwise, the corresponding after-sales service cannot be provided.
- All the above information must be included in the email, otherwise, the corresponding after-sales service cannot be provided.
- All the above information must be included in the email, otherwise, the corresponding after-sales service cannot be provided.

Download PDF: [TECLAST Laptop 11 windows User Guide](#)