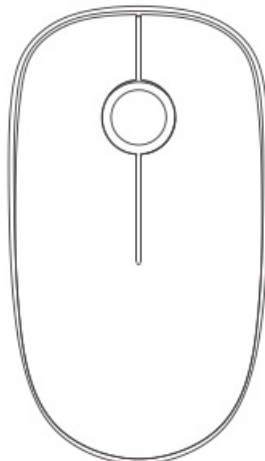
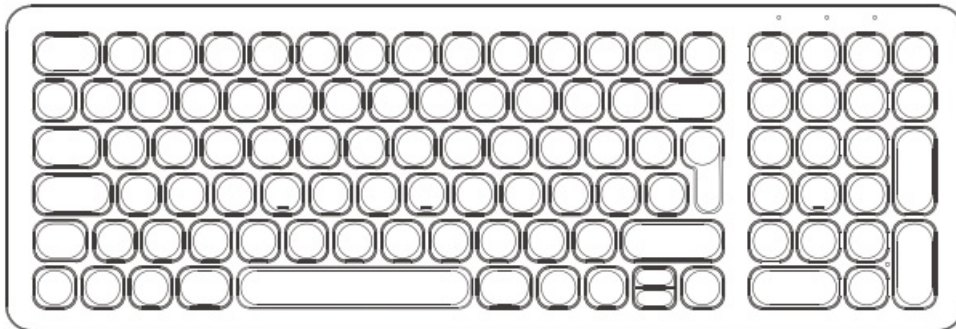




# TECKNET TK-KM004 Wireless Keyboard and Mouse Set User Manual

[Home](#) » [TECKNET](#) » TECKNET TK-KM004 Wireless Keyboard and Mouse Set User Manual 

## TECKNET TK-KM004 Wireless Keyboard and Mouse Set



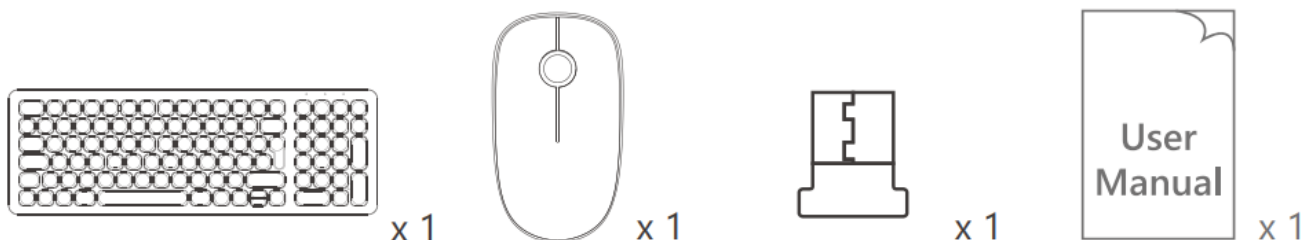
## Contents

- 1 Thank you
- 2 Package Contents
- 3 Product Overview
- 4 Specifications
- 5 How to Use
- 6 To change DPI
- 7 Keyboard Status Indicator
- 8 Combined Keys for Multimedia Functions
- 9 Independent Multimedia Buttons
- 10 Sleep Mode
- 11 Specifications Solutions for Connectivity Issues
- 12 FCC STATEMENT
- 13 SIMPLIFIED EU DECLARATION OF CONFORMITY
- 14 Documents / Resources
  - 14.1 References
- 15 Related Posts

## Thank you

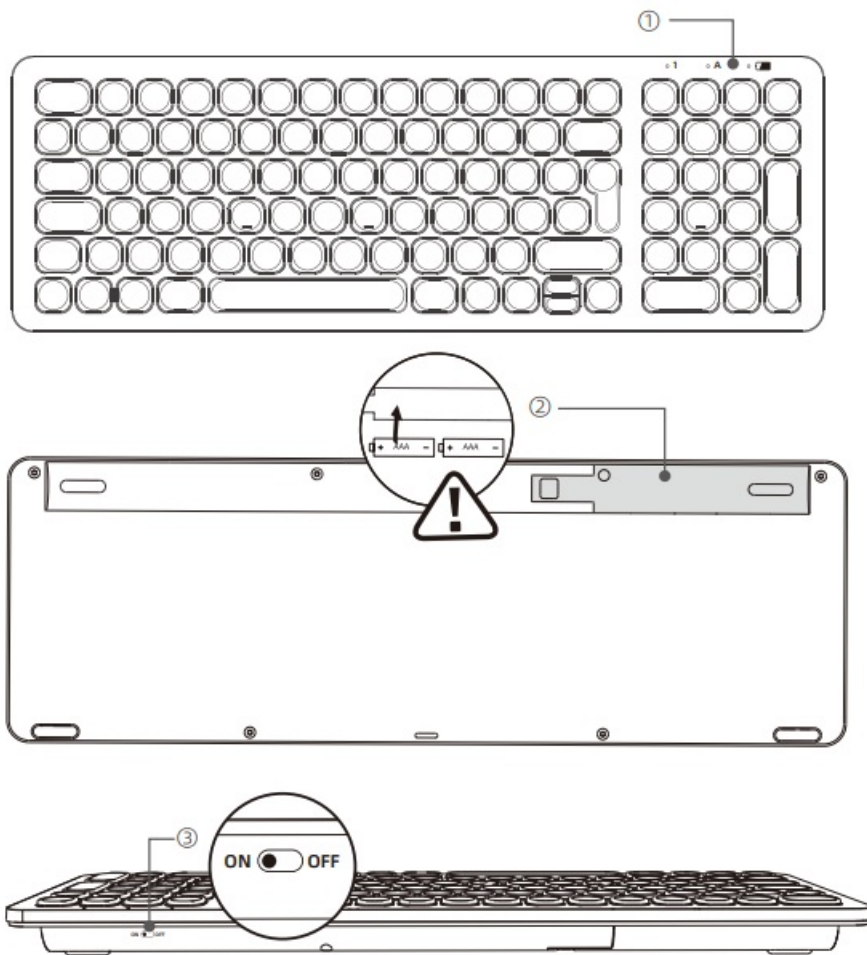
Thank you for purchasing TECKNET Wireless Keyboard and Mouse. Please read this User Manual thoroughly before use of the product and retain it for future reference. If you have any problem using this product, please contact us by email at [support@tecknetonline.com](mailto:support@tecknetonline.com).

## Package Contents

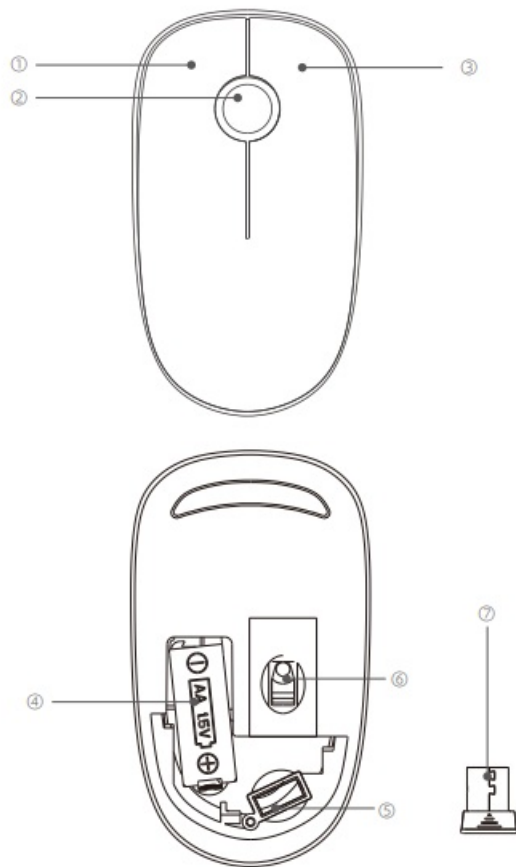


## Product Overview

1. Status Indicators
2. AAA Batteries Compartment
3. On/Off Switch



1. Left Button
2. Scroll Wheel
3. Right Button
4. AA Battery Compartment
5. Receiver Compartment
6. Optical Sensor
7. USB-A Receiver (Inside the Mouse)



## Specifications

### Mouse

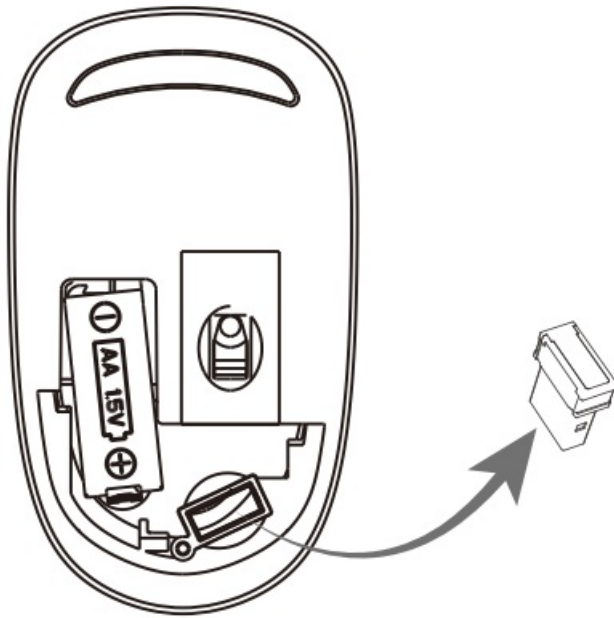
1. DPI: 3 DPI levels
2. Connectivity Mode: 2.4 GHz
3. Working Voltage: 1.5 V
4. Working Current: 11 mA
5. Transmission Power:  $\leq 0$  dBm
6. Systems Compatible: Windows XP/7 /8/10/11, macOS X10.4 or later

### Keyboard

1. Connectivity Mode: 2.4GHz
2. Working Voltage: 3.0V
3. Working Current: 11mA
4. Transmission Power:  $\leq 0$  dBm
5. Systems Compatible: Windows XP/7/8/10/11, macOS X10.4 or later

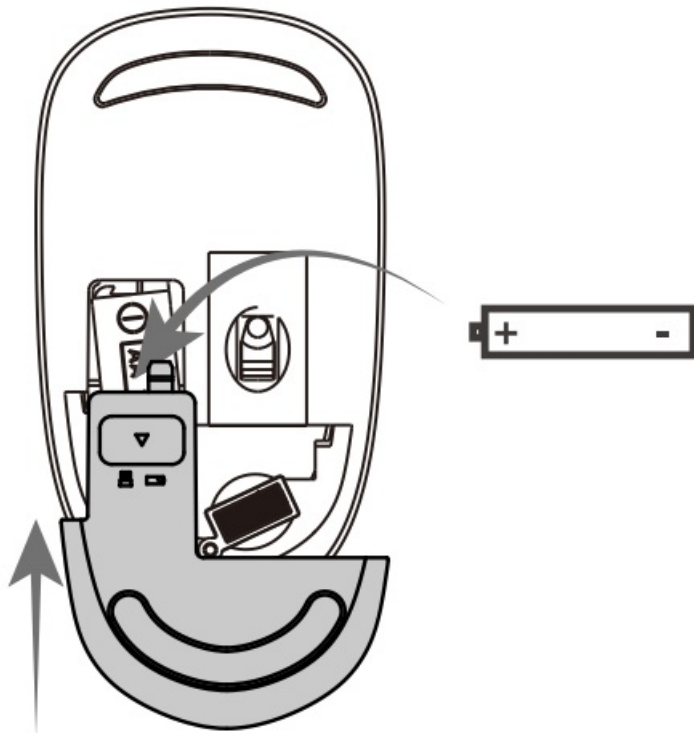
## How to Use

1. Open the battery cover at the bottom of the mouse and take out the USB receiver.



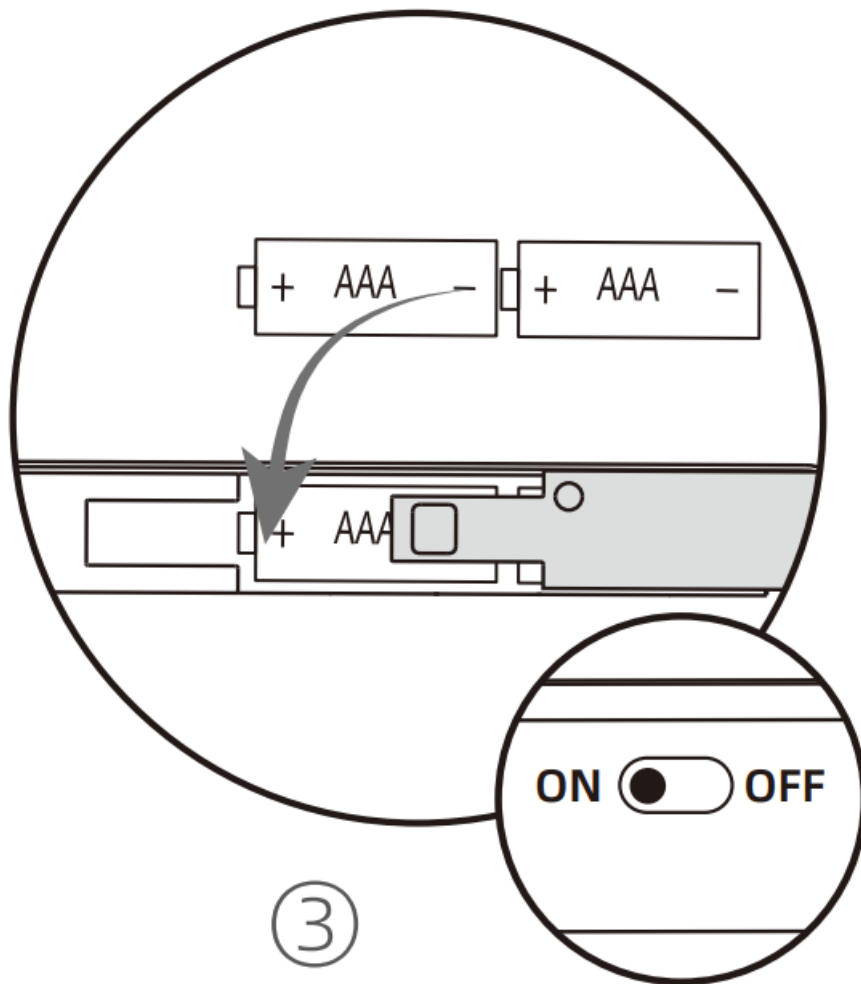
①

2. Insert 1 AA battery into the mouse referring to the polarity instructions, then close the battery cover.

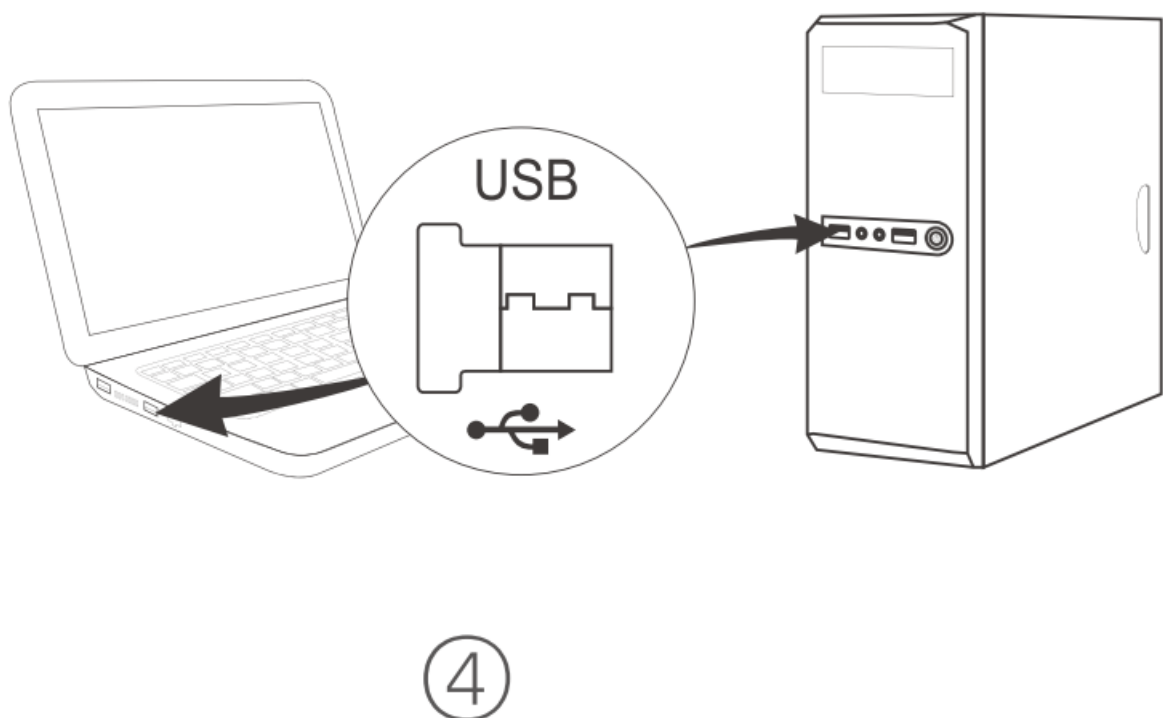


②

3. Insert 2 AAA batteries into the keyboard referring to the polarity instructions, then close the battery cover. Turn on the switch on the keyboard.



4. Plug the USB receiver into a USB-A port on the computer. They are ready after the driver is installed on the computer automatically.



**To change DPI**

Press and hold Left Button and Scroll Wheel for 3 sec to cycle through 3 DPI levels.

## Keyboard Status Indicator



Power Indicator: Green light flashes once (when turned on)

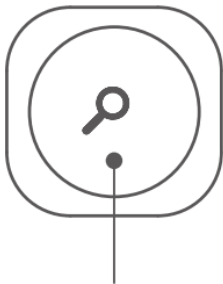


Low Battery: Green light flashes

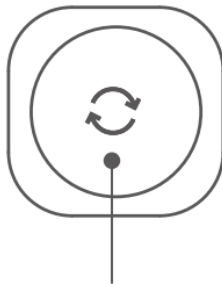
## Combined Keys for Multimedia Functions

Fn+F1	Fn+F2	Fn+F3	Fn+F4	Fn+F5	Fn+F6
Player	Volume-	Volume+	Mute	Previous Track	Next Track
Fn+F7	Fn+F8	Fn+F9	Fn+F10	Fn+F11	Fn+F12
Play/Pause	Stop	Homepage	Email	This PC	Favorites

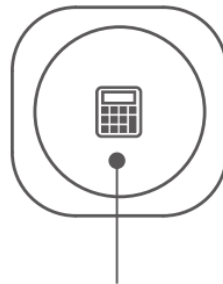
## Independent Multimedia Buttons



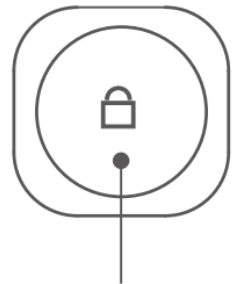
Search



Refresh



Calculator



Hibernate

### Note

The multimedia functions of the keyboard are not available on macOS.

## Sleep Mode

The mouse has an automatic sleep function, which saves power consumption and increases battery life. When the computer is on and not in hibernation, the mouse will enter sleep mode after 15 minutes of inactivity. Press any button on the mouse to wake it up.

## Specifications Solutions for Connectivity Issues

### Mouse

1. Take out the battery and install it back in the correct polarity direction.
2. Press the left button, scroll wheel and right button simultaneously over
3. sec and it will enter code pairing mode.
4. Unplug the USB receiver and plug it back in. Move the mouse within 20 sec and it will work normally.

### Keyboard

1. Turn on the switch after the keyboard is installed with batteries.

2. Press "ESC" and "⏏" simultaneously for over 3s, and the keyboard will enter code pairing mode when the power indicator stays on.
3. Plug the USB receiver into the computer and keep the distance between the receiver and keyboard within 30cm.
4. The power indicator light of the keyboard will go out if the pairing is done.

### Cautions

1. Do not expose the product to liquid and humid environments or use it near bathtubs, sinks, or swimming pools.
2. Do not expose the product to excessively high or low temperatures.
3. Do not leave the product in direct sunlight for a long time.
4. Avoid scratching the product with sharp objects.
5. If the product will not be used for a long time, turn off the product and take out the batteries.
6. Replace the batteries in time for the product when the battery is low.
7. Batteries are not included in the package.



### Correct Disposal of This Product






( Waste Electrical& Electronic Equipment )

This Marking shown on the product or its literature, indicate that it should not be disposed with other household wastes at the end of its working life.

To prevent possible harm to the environment or human health from uncontrolled waste disposal, please separate this from other types of wastes and recycle it responsibly to promote the sustainable reuse of material resources. Household user should contact either the retailer where they purchased this product, or their local government office, for details of where and how they can take this item for environmentally safe recycling.

Business users should contact their supplier and check the terms and conditions of the purchase contract. This product should not be mixed with other commercial wastes for disposal.

### IMPORTANT SAFETY INSTRUCTIONS-CAREFULLY FOLLOW THESE INSTRUCTIONS.

1.  **RETAIN THESE INSTRUCTIONS** – This sheet contains important safety and operating instructions.
2. Before using the product, read all instructions and caution markings on the product, accessories, and device.
3.  This appliance is not intended for use by persons (including children) with reduced physical, sensory or mental capabilities, or lack of experience and knowledge, unless they have been given supervision or instruction concerning use of the appliance by a person responsible for their safety.
4.  Children should be supervised to ensure that they do not play with the appliance.
5.  Keep the product away from the fire to avoid an explosion.
6. For proper insertion, please observe polarity indicators (+/-).
7.  Remove the batteries if the product is not going to be used for a long period.
8. Do not place the product in or near an inflammable, explosive, or hazardous object.





9. Do not operate the product if it has been damaged in any way.

10. Do not disassemble the product. Disassembly may result in a risk of safety hazards.

11. Do not throw or shake the product.



12. Do not place the product in or near water, rain, excess moisture, or extreme heat.

## FCC STATEMENT

This device complies with Part 15 of the FCC Rules. Operation is subject to the following two conditions:

1. This device may not cause harmful interference, and
2. This device must accept any interference received, including interference that may cause undesired operation

**Warning:** Changes or modifications not expressly approved by the party responsible for compliance could void the user's authority to operate the equipment.

**NOTE:** This equipment has been tested and found to comply with the limits for a Class B digital device, pursuant to Part 15 of the FCC Rules. These limits are designed to provide reasonable protection against harmful interference in a residential installation. This equipment generates uses and can radiate radio frequency energy and, if not installed and used in accordance with the instructions, may cause harmful interference to radio communications. However, there is no guarantee that interference will not occur in a particular installation. If this equipment does cause harmful interference to radio or television reception, which can be determined by turning the equipment off and on, the user is encouraged to try to correct the interference by one or more of the following measures:

- Increase the separation between the equipment and receiver.
- Connect the equipment into an outlet on a circuit different from that to which the receiver is connected.
- Consult the dealer or an experienced radio/TV technician for help.

FCC Radiation Exposure Statement:

This equipment complies with FCC radiation exposure limits set forth for an uncontrolled environment. This equipment should be installed and operated with minimum distance 20cm between the radiator & your body.



**Limited 12-Month Warranty**

### What this warranty covers.

Shenzhen Unichain Technology Co., LTD. (Manufacturer: "Unichain") warrants to the original purchaser of this TeckNet product that the product shall be free of defects in design, assembly, material, or workmanship.

What the period of coverage is.

Unichain warrants the TECKNET product for 12 Months.

### What will we do to correct problems?

Unichain will repair or replace, at its option, any defective product free of charge (except for shipping charges for the product).

### What is not covered by this warranty?

All above warranties are null and void if the TeckNet product is not provided to Unichain for inspection upon Unichain's request at the sole expense of the purchaser, or if Unichain determines that the TeckNet product has been improperly installed, altered in any way, or tampered with. The TeckNet Product Warranty does not protect against acts of God such as flood, earthquake, lightning, war, vandalism, theft, normal-use wear and tear, erosion, depletion, obsolescence, abuse, damage due to low voltage disturbances (e.g. brownouts or sags), non-authorized program, or system equipment modification or alteration.

### How to claim the warranty

Please contact retailers or visit TECKNET website or email [support@tecknetonline.com](mailto:support@tecknetonline.com) for more information. To extend the warranty period, please visit TECKNET website and register your TECKNET products within 90 days of purchase.

### Disclaimer

Every effort has been made to ensure that the information and procedures in this guide are accurate and complete, no liability can be accepted for any errors or omissions and we reserve the right to make any changes without further notice to any products mentioned herein.


### SIMPLIFIED EU DECLARATION OF CONFORMITY

Hereby, Shenzhen Unichain Technology Co., Ltd. declares that the product type TK-KM004 is in compliance with Directive 2014/53/EU. The full text of the EU declaration of conformity is available at the following internet address: <https://eu.tecknetonline.com/>

# TECKNET

---

## Documents / Resources

	<a href="#">TECKNET TK-KM004 Wireless Keyboard and Mouse Set</a> [pdf] User Manual TK-KM004 Wireless Keyboard and Mouse Set, TK-KM004, Wireless Keyboard and Mouse Set, Keyboard and Mouse Set, Mouse Set, Set
---	---

## References

- [BestShop | Best Price, Smart Shopping](#)
- [TECKNET EU](#)
- [User Manual](#)