



TECHview 720p LCD Camera Clock User Manual

[Home](#) » [TECHview](#) » TECHview 720p LCD Camera Clock User Manual 

Contents

- [1 TECHview 720p LCD Camera Clock](#)
- [2 Box Contents:](#)
- [3 Specifications:](#)
- [4 Documents / Resources](#)
 - [4.1 References](#)
- [5 Related Posts](#)



TECHview 720p LCD Camera Clock

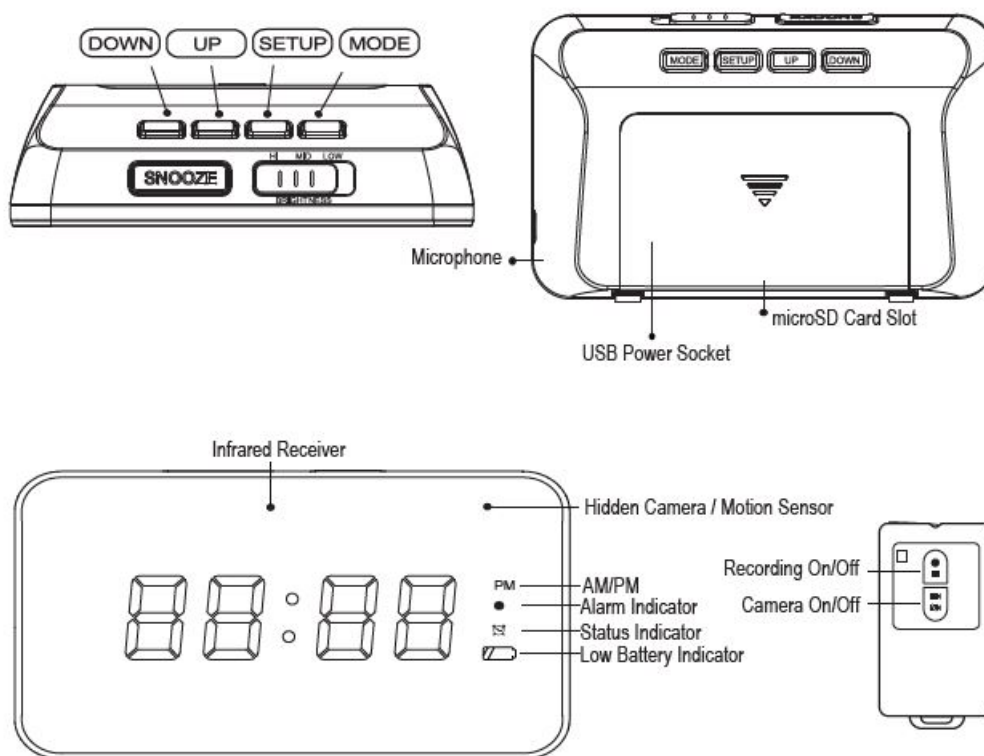


Box Contents:

- 1 x 720p LCD Camera Clock
- 1 x Remote Control

- 1x 4GB microSD Card
- 1x Micro B USB Cable
- 1x USB Power Supply

Diagram:



Operation:

1. Brightness Adjustment:

Using the brightness button located on the top of the camera clock, you can adjust between high, medium and low.

2. Video Recording:

There are two buttons located on the remote control to operate the camera:

- Record / Stop Recording
- Turn Camera On / Turn Camera Off

1. Firstly press the on button located on the remote control in order to turn the camera on. Once the on button is pressed, the LED status indicator will turn solid red.
2. To start recording video, press the record button located on the remote control. Press the record button a second time in order to stop recording.

- Once you have stopped recording, press the off button located on the remote control to turn the camera off.

Recording By Device: Press the “ ” button until the letter “ P ” is shown, then press the “ ” button to confirm. The letter “ P ” will be flashing then will return to the displayed time. The “ ” status indicator will be flashing. To stop recording, press the “ ” button.

- The LED status indicator will disappear once the camera has been turned off.

Note: Once the microSD card is full, the current video recording will override the existing footage from the start. The videos will be split into approximately 1GB each file.

3. Motion Detection:

1. Press the camera button located on the remote control to turn the camera on. Once the camera has been turned on, the LED status indicator on the clock camera will turn solid red.
2. Press the “ ” button until the number “ 5” is displayed, then press the “ ” to confirm. The number “5” will flash then return to the displayed time. The LED status indicator will turn solid red.
3. When movement has been detected, it will start the video recording for one minute. The LED status indicator will be flashing red during the video recording. Once the recording is over, the LED status indicator will stop flashing and will return to solid red.

4. Date/Time Setting:

1. When the date/time is displayed on screen, press the “ ” button to enter the “Year” setting. The screen will display the flashing text “2015”. Press the “ ” and “ ” button to set the correct year.
2. Press the “ ” button again to either set the month, day, hour or minute. The text will be flashing, press the “ ” and “ ” to set the correct month, day, hour or minute.
3. Hold down the “ ” button for 3 seconds to exit the time setting.

5. Alarm Setting:

1. Press the “ ” button to enter the alarm settings mode, “ ” will be displayed.
2. Set the alarm time by pressing the “ ” button to set the alarm “ hour ” and “ minutes ” accordingly. The alarm snooze interval can be set between 1-60 minutes by using the “ ” and “ ” buttons.
3. After the alarm clock is set, press the “ ” button to return to the alarm setting mode, it will then display “ ” . By pressing the “ ” button, you can turn either the alarm or snooze function on or off. When the “ ” button is pressed;
 - The alarm is off: The display will be shown as “ ”, icon will not be shown on the display.
 - One time alarm notice: The set alarm time and is shown on the clock display.
 - Snooze is activated: The set alarm time and is “flashing” on the clock display.
 - Press the “ ” button to exit the alarm setting, time and date. The time will be shown and the will be displayed if the clock is set correctly.

6. Alarm Snooze:

1. Open the snooze mode: each alarm will last for 1 minute, the alarm LED indicator flashes.
2. Press the “ ” button during the alarm: short press for under 3 seconds and release the button which will end the alarm. Long press equal to 3 seconds ends the alarm setting.
3. Every snooze interval can be set from 1 to 60 minutes.

7. 24 Hour Time:

- A. Under the time mode, press the “ ” button to change between 12 and 24 hour time.

8. Low Battery Indicator:

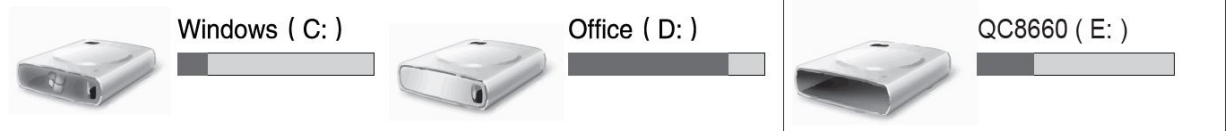
When the battery is running low, the low battery indicator will be displayed. Once the low battery indicator is displayed, plug the USB charger into the USB socket located on the rear of the camera and charge for up to 3 hours.

9. Video Time Stamp:

1. Software “SecretPen.exe” is provided on the microSD card in order to synchronize the computer time with the clock camera for the video time stamp.
2. Connect the clock camera to the computer with the USB cable provided and turn the camera on with the

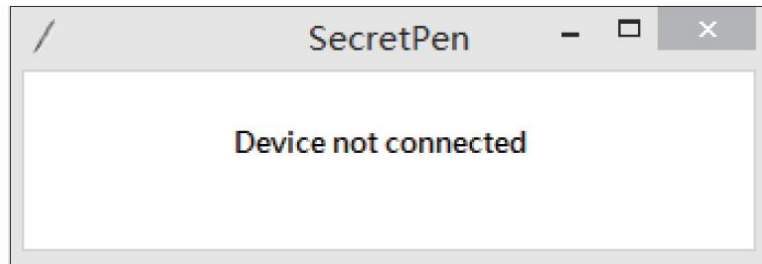
remote control. "QC8660" will pop up as removable storage device as shown below:

▲ My Computer

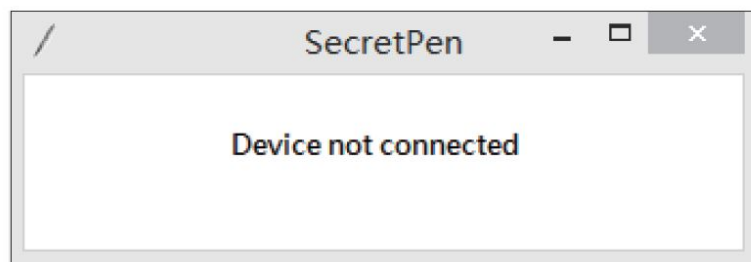


3. Open "QC8660" and click on the file name and open this.

1. For Windows 7, XP, 2000 and Mac systems, double click on the file and run the program.
2. For Windows 10, 8.1, 8 system users, select the file and right click on the file and choose the system user. The screen is displayed; click "yes" to run the program.
3. When the program is running, the dialog box is displayed as per below:



4. After a few seconds, once the time synchronization is successful, it will show the synchronized date and time. Close the alert message to complete the setting.



Note: the video tamp stamp can't be turned off.

Specifications:

- Resolution: 720p (1280 x 720)
- Video Format: AVI
- Viewing Angle: 90°
- Charge Time: up to 3 hours
- Run Time: up to 3 hours
- Storage: up to 32GB microSD card (4GB included)

Distributed by: TechBrands by Electus Distribution Pty. Ltd. 320 Victoria Rd, Rydalmere NSW 2116 Australia
Ph: 1300 738 555
Int': +61 2 8832 3200
Fax: 1300 738 500 www.techbrands.com





[TECHview 720p LCD Camera Clock](#) [pdf] User Manual
TECHview, 720p LCD Camera Clock, Camera Clock

References

- [Electus Distribution - Home](#)

[Manuals+.](#)