

TECHview 4 Door RFID Access Controller User Manual

[Home](#) » [TECHview](#) » TECHview 4 Door RFID Access Controller User Manual 

TECHview 4 Door RFID Access Controller User Manual



Contents

- [1 FEATURES](#)
- [2 SPECIFICATIONS](#)
- [3 BOX CONTENTS](#)
- [4 TCP/IP Wiring Diagram](#)
- [5 FIRE & ALARM EXPANSION BOARD \(OPTIONAL\)](#)
- [6 Documents / Resources](#)
 - [6.1 References](#)
- [7 Related Posts](#)

FEATURES

In/out management – Check the in/out time of access Time & attendance – Check attendance status and maintain statistics Access control setting – Who/when/how access Anti-passback of door – Once entering, card needs to exit before entering again. Opening door by multi-card – Door can only be accessed by multiple cards present. Opening door by first card – Door

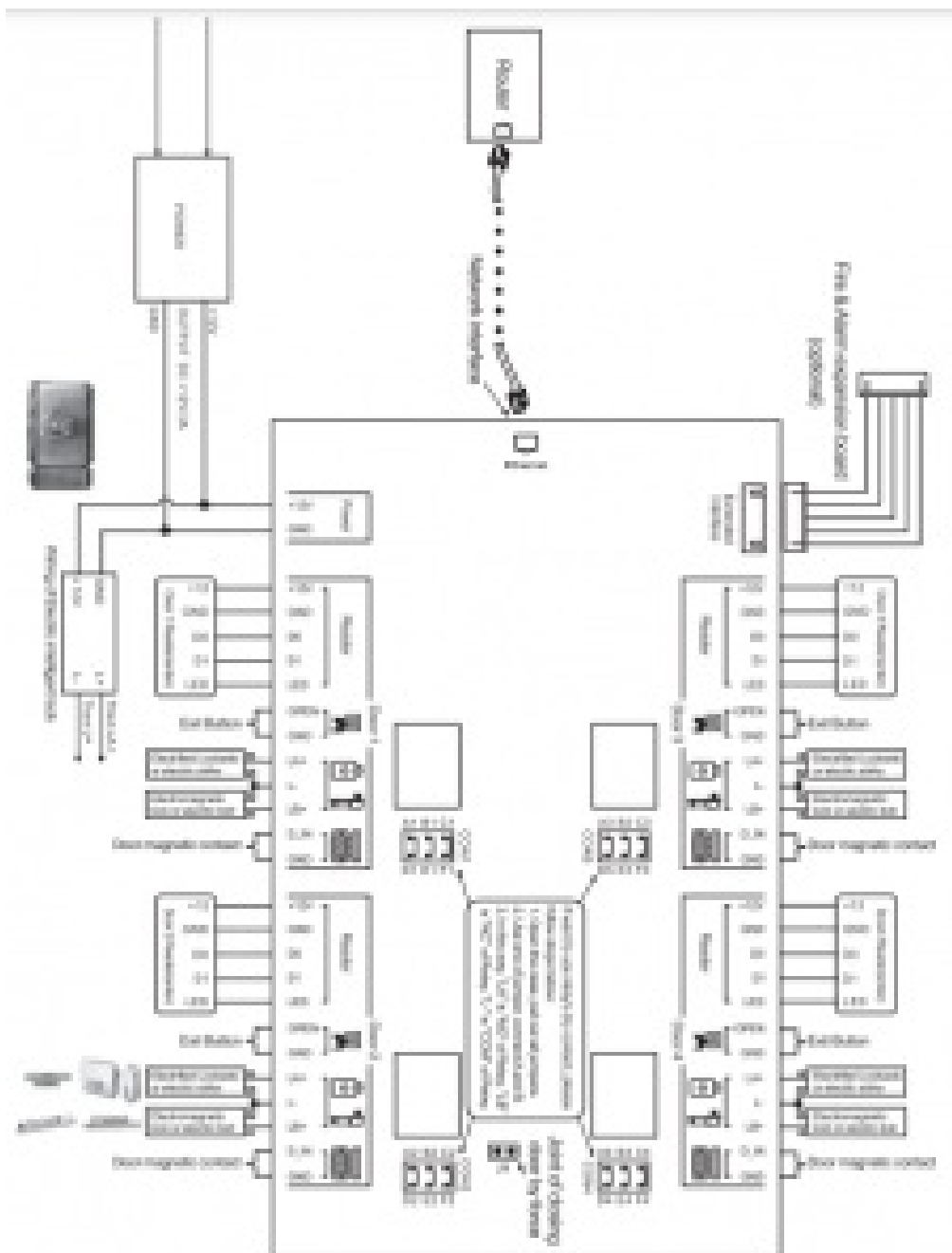
SPECIFICATIONS

Entry:	4 Door
User Capacity:	20,000
Event Log:	100,000 (Saved Permanently)
Wiegand Interface:	26-34 bit
Communication:	TCP/IP
Connection:	Electric Lock, Exit Button, External Alarm
Power Supply:	12V, 3A
Standby Current:	120mA
Dimensions	201(L) x 125(W) x 32(H)mm

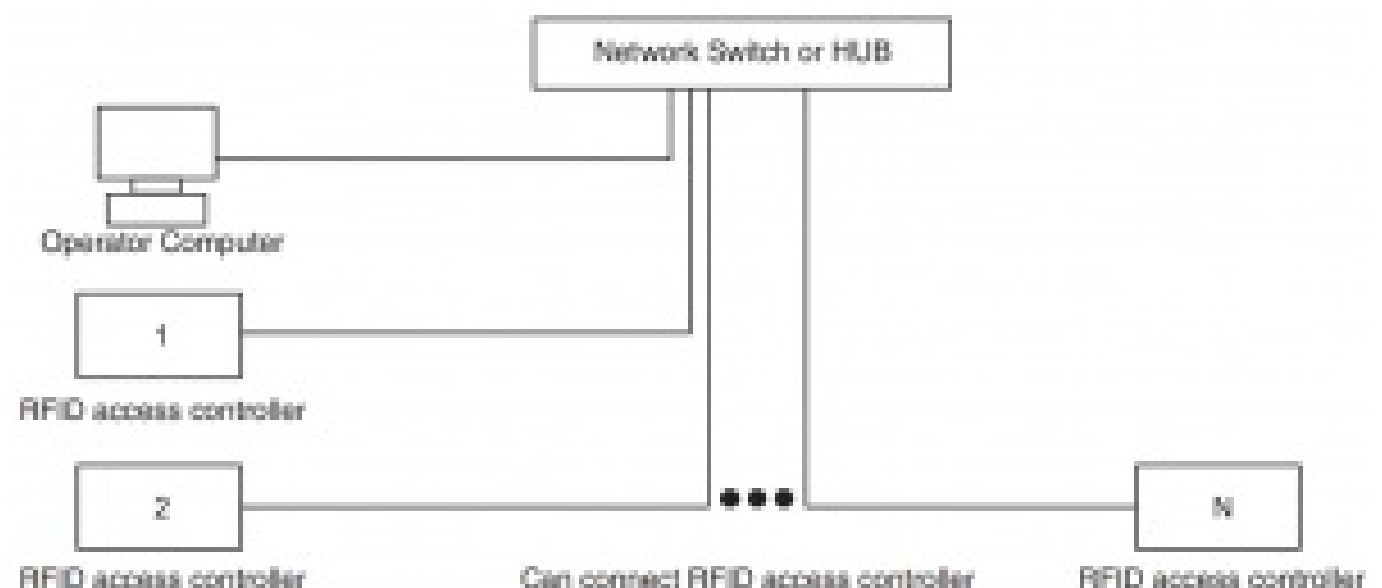
BOX CONTENTS

- 1 x 4 Door RFID Access Controller
- 1 x Software CD
- 1 x Mounting Kit (4 x Self-Tapping Screws, 4 x Rubber Bungs)

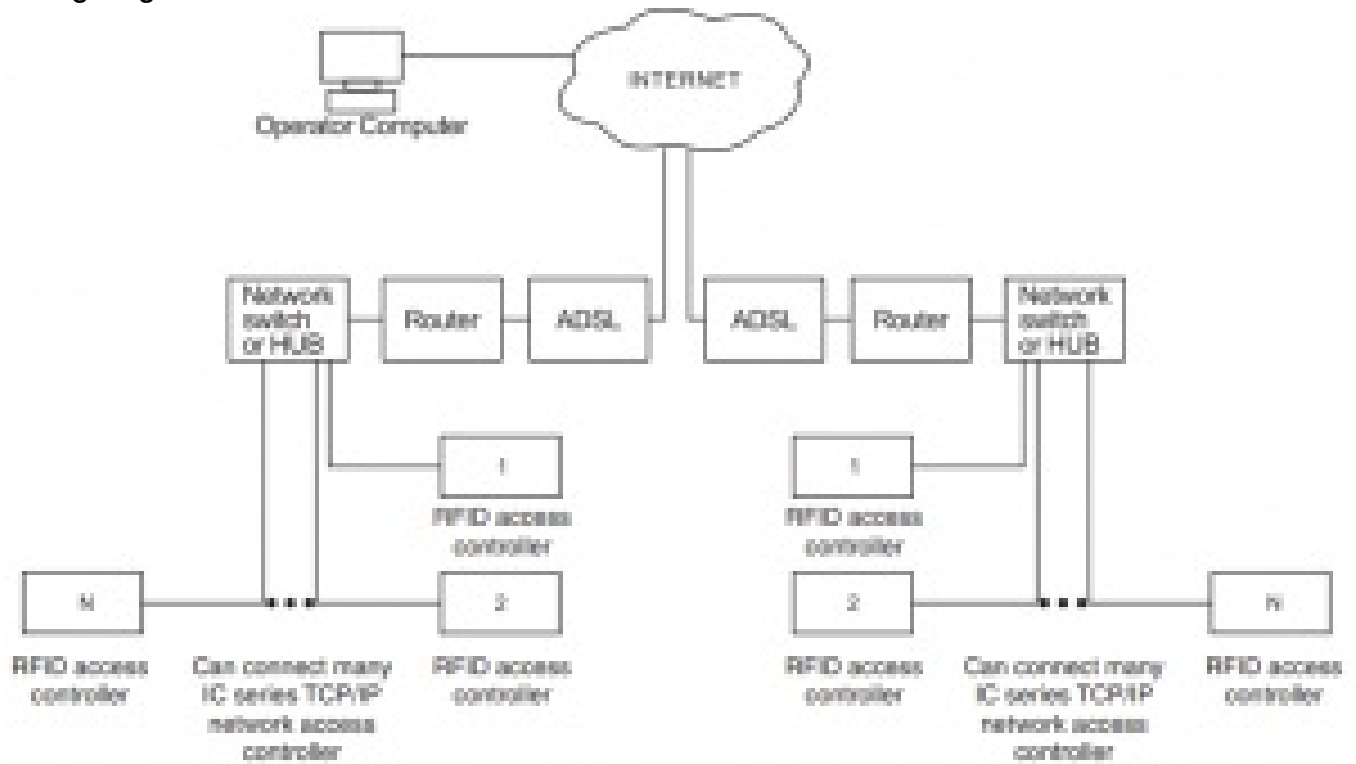
TCP/IP Wiring Diagram



Wiring Diagram LAN



Wiring Diagram WAN



FIRE & ALARM EXPANSION BOARD (OPTIONAL)

Fire & alarm expansion board is an add-on module for the product. It allows the setting of Fire and Alarm signal output via the software.

Module Features:

1. 4-way alarm output. You can set the function to which door or doors the controller will activate.
2. . Connect the fire signal input, so when the fire signal is received the doors in the controlled area will open automatically, and a fire alarm record will be generated.
3. Supports break-in alarm, long time unlocking alarm, forced entry alarm, invalid card alarm, fire & alarm linkage, etc.
4. Set delay time of each output from between 0-600 seconds.

Wiring Diagram

