

TECHPICCO Mud Flap Delete



# TECHPICCO Mud Flap Delete Instruction Manual

[Home](#) » [TECHPICCO](#) » TECHPICCO Mud Flap Delete Instruction Manual 

## Contents

- 1 [TECHPICCO Mud Flap Delete](#)
- 2 [Product Information](#)
- 3 [FRONT INSTALLATION INSTRUCTIONS](#)
- 4 [REAR INSTALLATION INSTRUCTIONS](#)
- 5 [Documents / Resources](#)
  - 5.1 [References](#)
- 6 [Related Posts](#)



## TECHPICCO Mud Flap Delete



## Product Information

### Specifications:

- Material: High-quality plastic
- Hardware: T15 Torx bit, 10mm socket

- Adhesive: Red tape
- Temperature for tape curing: 65 degrees

### **Front Installation Instructions:**

1. Use a T15 Torx bit to remove the two upper factory screws indicated by the arrows. Retain hardware for reuse.
2. Use a T15 Torx bit to remove one screw from the underside of the mud flap indicated by the arrow. Use a 10mm socket to remove the factory bolt from the mud flap indicated by the circle. Remove the mud flap by firmly pulling away from the vehicle body.
3. Clean the surface where the mud flap delete will fit to ensure proper adhesion.
4. Hold the new front mud flap delete piece firmly on the fender keeping the red tape lead end free. Start 2 of the factory screws through the holes in the mud flap delete and into the fender.
5. Pull the red tape lead end at an angle to release the part from the tape.
6. Press the part against the vehicle for 30 seconds to ensure full adhesion. Tape cures after 24 hours at 65 degrees.
7. Tighten the two factory screws from Step 3.
8. Repeat for the other side of the vehicle.

### **Rear Installation Instructions:**

1. Remove the factory screws with a T15 Torx bit. Retain hardware for reuse.
2. Remove underside factory screws with a T15 Torx bit. Firmly pull mud flap to release from vehicle. Retain hardware for reuse.
3. Clean the surface where the mud flap delete will fit to ensure proper adhesion.
4. Start two factory screws in factory hole location, keeping the red tape leader free to move.
5. Gently pull the red tape leader away from the part.
6. Press the part on the vehicle for 30 seconds now that the tape is removed.
7. Reinstall the two underside factory screws through the holes of the mud flap delete and into the fender.
8. Tighten all screws with a T15 Torx bit.
9. Repeat steps for the other side of the vehicle.

### **FAQ:**

**Q:** How long should I wait before driving after installing the mud flap delete?

**A:** It is recommended to wait for at least 24 hours after installation to allow the adhesive tape to fully cure and ensure proper adhesion.

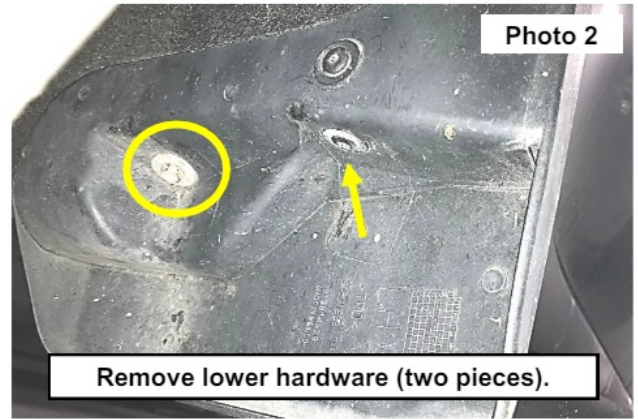
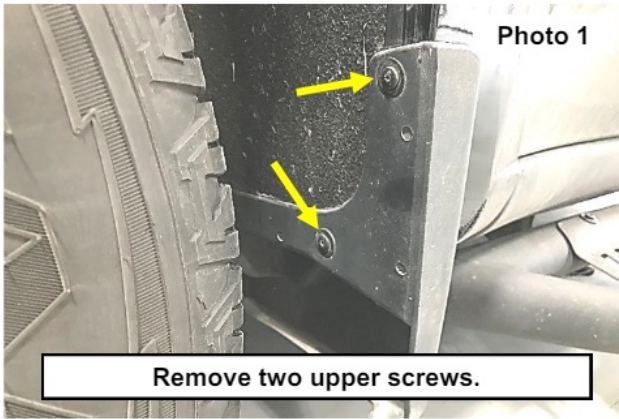
**Q:** Can I wash my vehicle after installing the mud flap delete?

**A:** It is advisable to avoid washing your vehicle for at least 24 hours after installation to prevent any disturbance to the adhesive tape bonding process.

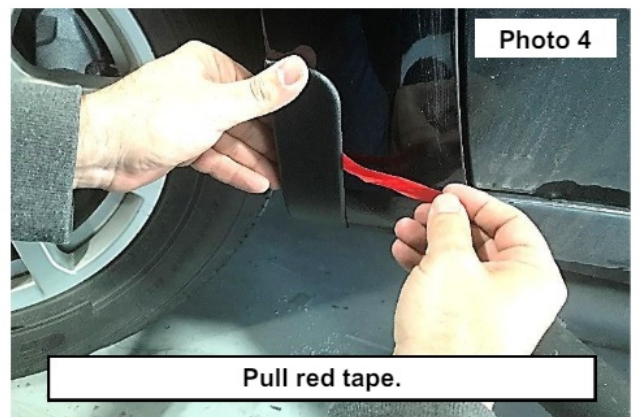
### **FRONT INSTALLATION INSTRUCTIONS**

1. Use a T15 Torx bit to remove the two upper factory screws indicated by the arrows. Retain hardware for reuse.  
See Photo 1.
2. Use a T15 Torx bit to remove one screw from underside of mud flap indicated by the arrow. Use a 10mm socket

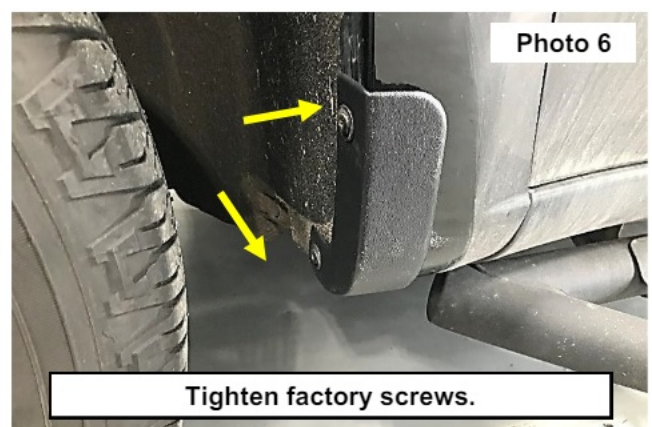
to remove the factory bolt from the mud flap indicated by the circle. Remove the mud flap by firmly pulling away from the vehicle body. A hidden retaining clip will disengage. See Photo 2.



3. Clean the surface where the mud flap delete will fit. This will ensure the tape on the part adheres properly.
4. Hold the new front mud flap delete piece firmly on the fender keeping the red tape lead end free. Start 2 of the factory screws through the holes in the mud flap delete and into the fender. See Photo 3.
5. Pull red tape lead end at an angle to release the part from the tape. See Photo 4.



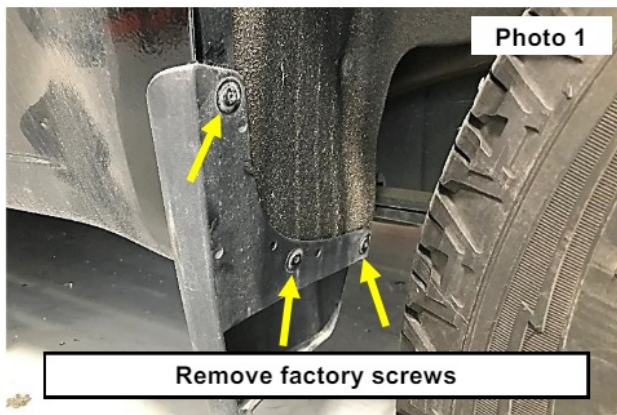
6. With the tape fully removed, press the part against the vehicle for 30 seconds to ensure full adhesion. Tape cures after 24 hours at 65 degrees. See Photo 5.
7. Tighten the two factory screws from Step 3. See Photo 6.
8. Repeat for other side of vehicle.



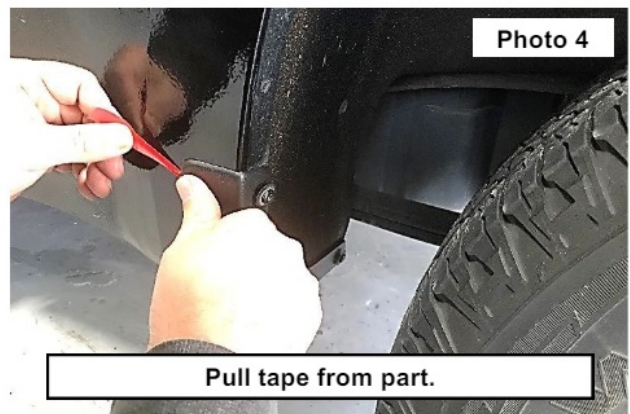
## REAR INSTALLATION INSTRUCTIONS

1. Remove the factory screws with a T15 Torx bit. Retain hardware for reuse. See Photo 1.
2. Remove underside factory screws with a T15 Torx bit. Firmly pull mud flap to release from vehicle. Retain hardware for reuse. See Photo 2.

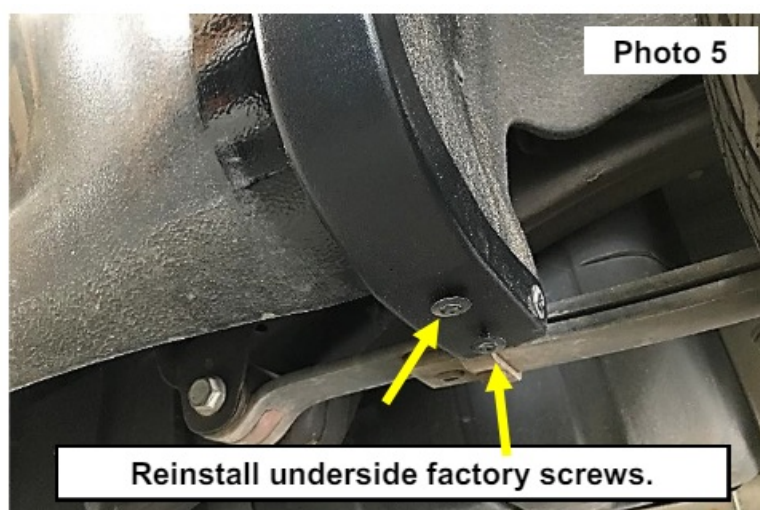





3. Clean the surface where the mud flap delete will fit. This will ensure the tape on the part adheres properly.
4. Start two factory screws in factory hole location, keeping the red tape leader free to move. See Photo 3.
5. Gently pull the red tape leader away from the part. See Photo 4.



6. Press the part on the vehicle for 30 seconds now that the tape is removed.
7. Reinstall the two underside factory screws through the holes of the mud flap delete and into the fender. See Photo 5.
8. Tighten all screws with a T15 Torx bit.
9. Repeat steps for other side of vehicle.



Documents / Resources

	<p><a href="#">TECHPICCO Mud Flap Delete</a> [pdf] Instruction Manual</p> <p>Mud Flap Delete, Flap Delete, Delete</p>
---	---

References

- [User Manual](#)

Manuals+, Privacy Policy

This website is an independent publication and is neither affiliated with nor endorsed by any of the trademark owners. The "Bluetooth®" word mark and logos are registered trademarks owned by Bluetooth SIG, Inc. The "Wi-Fi®" word mark and logos are registered trademarks owned by the Wi-Fi Alliance. Any use of these marks on this website does not imply any affiliation with or endorsement.