



Techomey DIM-26SN Portable Automatic Ice Maker Instruction Manual

[Home](#) » [Techomey](#) » Techomey DIM-26SN Portable Automatic Ice Maker Instruction Manual 

Techomey DIM-26SN Portable Automatic Ice Maker Instruction Manual



Contents

- 1 IMPORTANT SAFETY INSTRUCTIONS
- 2 GETTING TO KNOW YOUR UNIT
- 3 Position of control panel & function
- 4 OPERATING PROCEDURES & MAINTENANCE
- 5 USING YOUR ICE MAKER
- 6 TROUBLESHOOTING
- 7 TECHNICAL PARAMETERS & CIRCUIT DIAGRAM
- 8 ELECTRICAL DIAGRAM
- 9 EXPLOSIVE DRAWINGS
- 10 Warranty Information
- 11 Documents / Resources
 - 11.1 References
- 12 Related Posts

IMPORTANT SAFETY INSTRUCTIONS

Your safety and the safety of others are very important.

We have provided many important safety messages manual and your appliance. Always read and obey all safety messages.



This is the safety alert symbol:

All safety messages will follow the safety alert symbol and the word “DANGER” or “WARNING”



DANGER



WARNING

These words mean:


You can be killed or seriously injured if you don't immediately follow instructions.

All safety messages will tell you what the potential hazard is, tell you how to reduce the chance of injury, and tell you what can happen if the instructions are not followed.

When using electrical appliances, basic safety precautions should be followed to reduce the risk of fire, electric shock, and injury to persons or property. Read all instructions before using any appliance.

- This appliance can be used by children aged from 8 years and above and persons with reduced physical, sensory or mental capabilities or lack of experience and knowledge if they have been given supervision or instruction concerning use of the appliance in a safe way and understand the hazards involved. Children shall not play with the appliance. Cleaning and user maintenance shall not be made by children without supervision.
- Do not operate this or any other appliance with a damaged cord.
If the supply cord is damaged, it must be replaced by the manufacturer or its service agent

or a similarly qualified person in order to avoid a hazard. This ice-maker must be positioned so that the plug is accessible. Connect to properly polarized outlets only. No other appliance should be plugged into the same outlet. Be sure that the plug is fully inserted into the receptacle.

- Do not run the power cord over carpeting or other heat insulators. Do not cover the cord. Keep cord away from traffic areas, and do not submerge in water.
- We do not recommend the use of an extension cord, as it may overheat and become a risk of fire. If you must use an extension cord, use No. 0.75mm² minimum size and rated no less than 16A/250V~ with a plug.
- Unplug the ice maker before cleaning or making any repairs or servicing.
- Exercise caution and use reasonable supervision when appliance is used near children.
- Do not use your ice-maker outdoors. Place the ice-maker away from direct sunlight and make sure that there is at least 10cm of space between the back of your unit and wall. Keep a minimum distance of 10cm on each side of your unit free.
- Do not use other liquid to make the ice-cube other than water.
- Do not clean your ice maker with flammable fluids. The fumes can create a fire hazard or explosion.
- Do not tip over.
- If the ice maker is brought in from outside in wintertime, give it a few hours to warm up to room temperature before plugging it in.
- This appliance is not intended for use by persons (including children) with reduced physical, sensory or mental capabilities, or lack of experience and knowledge, unless they have been given supervision or instruction concerning use of the appliance by a person responsible for their safety.
- Children should be supervised to ensure that they do not play with the appliance.
- This appliance must be earthed.
- Do not store explosive substances such as aerosol cans with a flammable propellant in this appliance.
- This appliance is intended to be used in household and similar applications such as
 - staff kitchen areas in shops, offices and other working environments;
 - farm houses and by clients in hotels, motels and other residential type environments;
 - bed and breakfast type environments;
 - catering and similar non-retail applications.
-  **Warning:** Risk of fire/flammable materials used. Please according to local regulations regarding disposal of the appliance for its flammable blowing gas.
- **WARNING:** Keep ventilation openings, in the appliance enclosure or in the built-in structure, clear of obstruction.
- **WARNING:** Do not damage the refrigerant circuit.
- **WARNING:** Do not use mechanical devices or other means to accelerate the defrosting process or ice harvesting process, other than those recommended by the manufacturer.
- **WARNING:** Do not use other type of electrical appliances inside the ice-maker.

IMPORTANT

The wires in this mains lead are colored in accordance with the following code:

Green or Green with a strip yellow:	Grounding
Blue:	Neutral
Brown	Live

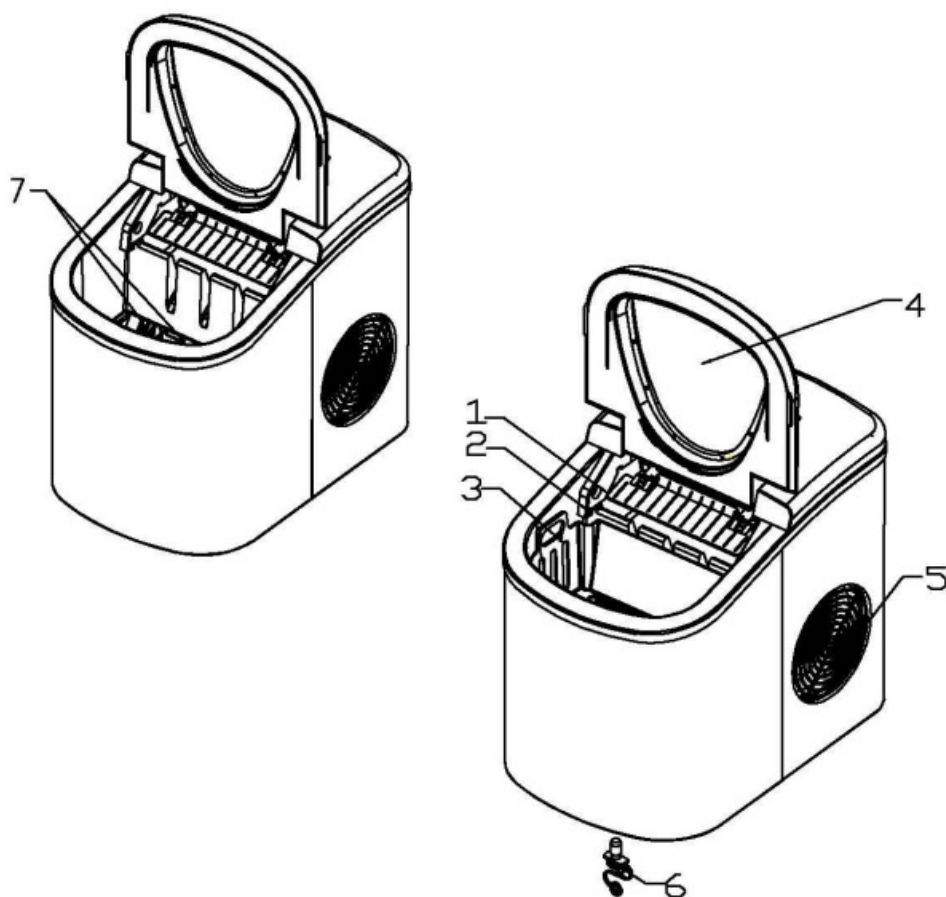
To avoid a hazard due to instability of the appliance, it must be placed at an even or flat surface.

GETTING TO KNOW YOUR UNIT

General instruction

1. Ice scoop. 2. Ice full sensor
2. Ice basket
3. Top cover with transparent window
4. Air outlet
5. Water drain cap: at front btm side of the unit
6. MAXIMUM WATER LEVEL: ▲

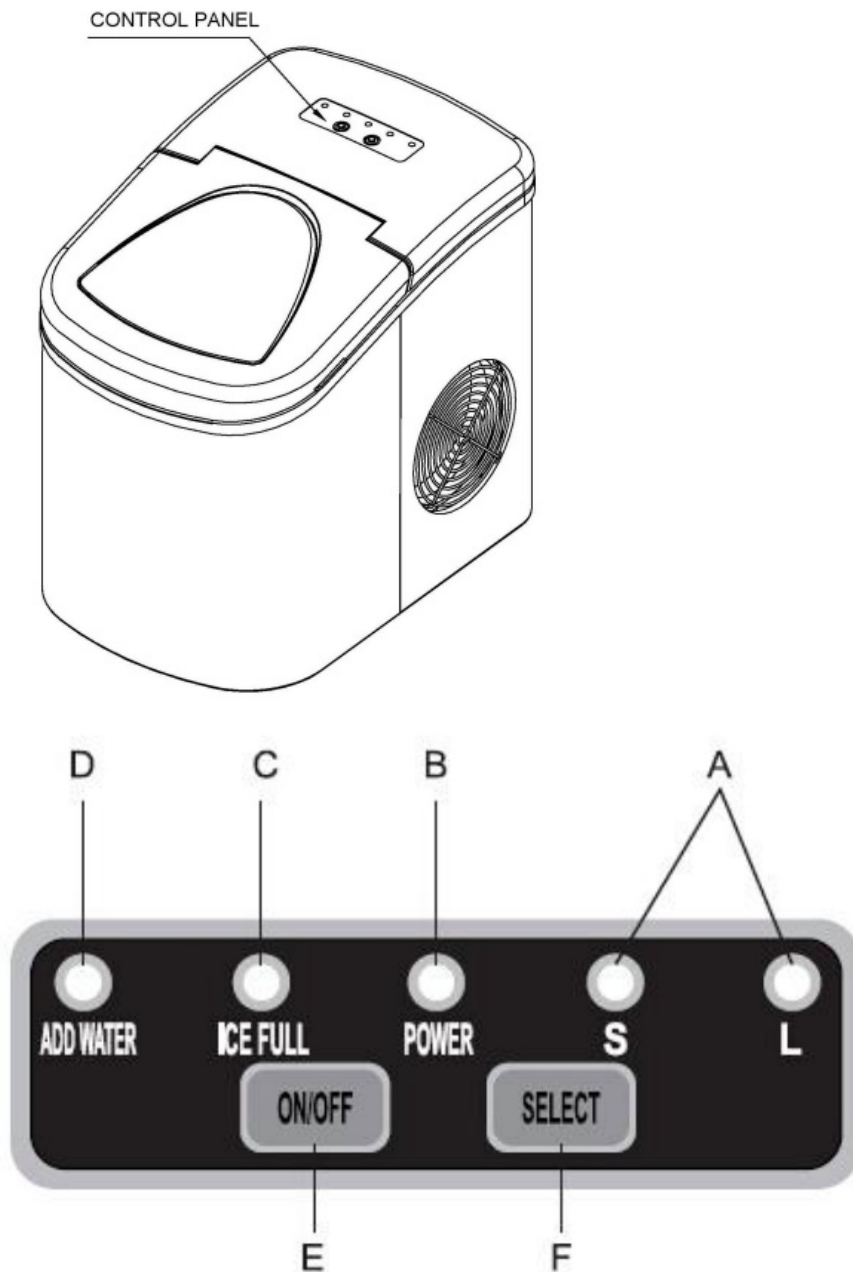
Remove the ice basket, you can see the water level mark.



Position of control panel & function

Control Panel: Easy to use, visible functions touch display setting.

- A. Selected ice size displaying: Small and Large.
- B. Power indicator
- C. Ice-Full indicator
- D .Water shortage indicator
- E. Button to turn on/off the unit.
- F. Button to select ice cube size



OPERATING PROCEDURES & MAINTENANCE

UNPACKING YOUR ICE MAKER

1. Remove the exterior and interior packaging. Check if ice basket and ice scoop inside. If any parts are missing, please contact our customer service.
2. Remove the tapes for fixing ice shovel, ice basket & ice scoop. Clean the tank & icebasket.
3. Put the ice maker on a level & flat counter top without direct sunlight and other sources of

heat (i.e.: stove, furnace, radiator). Make sure that there is at least 10cm gap between the back & LH/RH sides with the wall.

4. Allow one hour for the refrigerant fluid to settle before plugging the ice maker in.
5. The appliance must be positioned so that the plug is accessible

WARNING: fill with potable water only. Only use drinking water.

CONNECTING YOUR ICE MAKER

DANGER

Improper use of the grounded plug can result in the risk of electrical shock. If the power cord is damaged please call our customer service.

1. This unit should be properly grounded for your safety. The power cord of this appliance is equipped with a grounding plug which mates with standard grounding wall outlets to minimize the possibility of electric shock.
2. Plug your appliance into an exclusive, properly installed, grounding wall outlet. Do not under any circumstances, damage the grounding means of the plug under any circumstances. Any questions concerning power and/or grounding should be directed toward a certified electrician.
3. This appliance requires a standard 220-240Volt, 50Hz electrical outlet with good grounding means.

CLEANING AND MAINTAINING YOUR ICE MAKER

Before using your ice maker, it is strongly recommended to clean it thoroughly

1. Take out the ice basket.
2. Clean the interior with diluted detergent, warm water and a soft cloth.
3. Then use the water to rinse the inside parts, and drain out the water by unplugging the drain cap on front bottom side.
4. The outside of the ice maker should be cleaned regularly with a mild detergent solution and warm water.
5. Dry the interior and exterior with a clean soft cloth.
6. When the machine is not to be used for a long time, drain water completely & dry the interior.

USING YOUR ICE MAKER

1. Open the cover, remove the ice basket and pour water into tank. Keep water level below the MAXIMUM water level mark.
2. Press "ON/OFF" button on the control panel to begin the ice making cycle.
3. Select the ice cube size by pressing the "SELECT" button. If the room temperature is lower than 15°C, it is recommended to select small ice cube in order to avoid ice sticking together.
4. The ice making cycle lasts approx. 6 to 13 minutes, depending on selection of ice cube size and the room temperature. The recommended room temperature is 10°C to 43°C
5. If water pump can't inject water, the ice maker will stop automatically, and the "Add Water" indicator will be on. Press "ON/OFF" button, fill water up to the max. water level mark and press "ON/OFF" button again to turn on the unit again. Allow the refrigerant liquid inside the compressor at least 3 minutes to settle before restarting.

6. The unit stops when the ice basket is full and the “Ice Full” indicator will be on.

Warning: Direct sunlight or sunlight reflection may cause infrared sensor malfunction. If the unit doesn't stop even ice cubes obstruct sensor, move the unit where no sunlight.

7. Change water in the water reservoir every 24 hours to ensure a reasonable hygiene level. If unit isn't to be used, drain all the water and dry the tank.

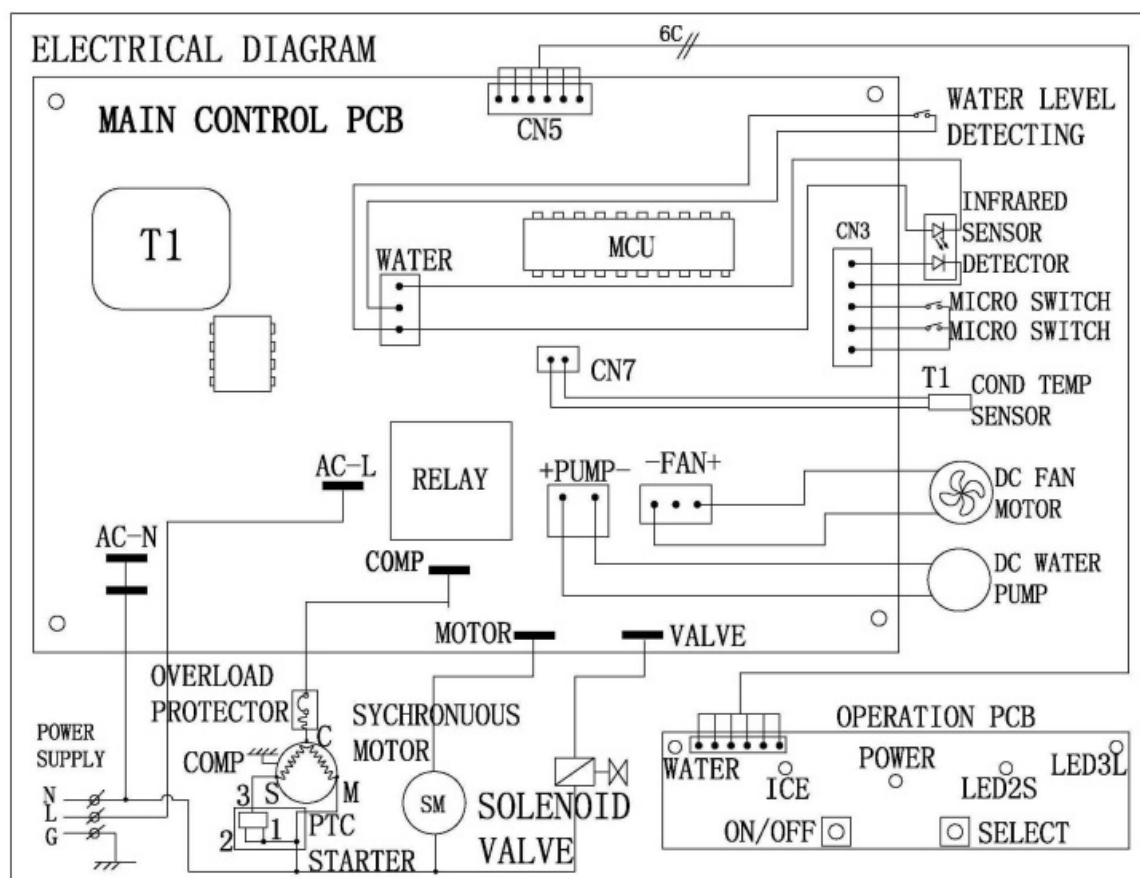
TROUBLESHOOTING

PROBLEM	POSSIBLE CAUSE	SOLUTION:
“Add Water” indicator is on.	Lack of Water.	Stop the ice maker, fill water, and press “ON/OFF” button again to restart the unit.
“Ice Full” indicator is on.	Ice is full in basket.	Remove ice from ice basket. Continuously press “Select” button 5 seconds, the unit could make ice 10 cycles even “Ice” indicator is on.
Ice cubes stick together.	The ice making cycle is too long.	Stop the ice maker, and restart it when the ice blocks melt. Select the small size ice cube selection.
	Water temperature in inner tank is too low.	Replace the water. Temperature of water recommended at 8-32°C
Ice making cycle is normal but no ice formed.	Room temperature or water temperature in inner tank is too high.	The room temperature should be 10-43 °C , water temperature should be 8-32°C
	Refrigerant in cooling system leaks.	Verify by a qualified technician.
	Pipe in the cooling system is blocked.	Verify by a qualified technician.

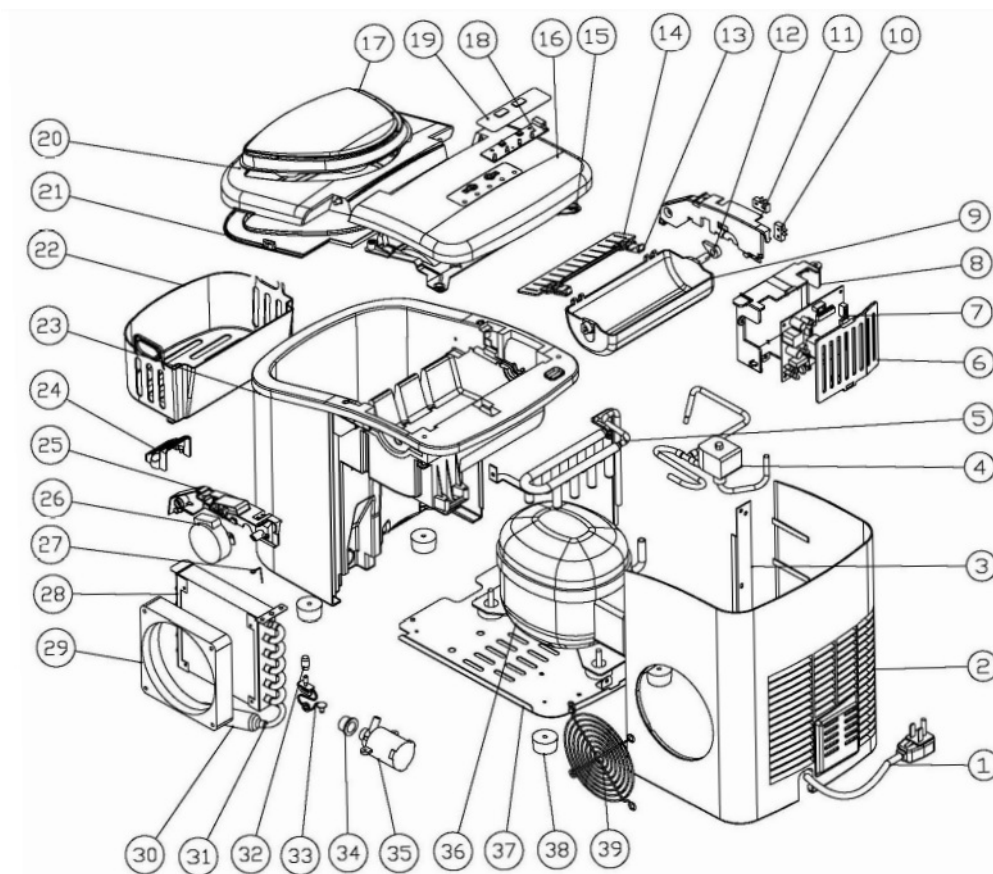
TECHNICAL PARAMETERS & CIRCUIT DIAGRAM

Model	DIM-26EN(A)	DIM-26SN(A)
Protection Type	I	I
Climate Type	SN/N/ST/T	SN/N/ST/T
Power	220-240V/50Hz	220-240V/50Hz
Ice Making Current	0.7A	0.7A
Ice Harvest Current	1.0A	1.0A
Refrigerant	R600a/26g	R600a/26g
Net Weight	7.8Kg	7.9kg
Vesicant	C5H10	C5H10
Enclosure	Plastic	Stainless

ELECTRICAL DIAGRAM



EXPLOSIVE DRAWINGS



1. Power cord
2. Back panel
3. Plate inforce
4. Magnetism valve
5. Evaporator
6. Control box cover
7. Main PCB
8. Control box
9. Ice making box
10. Micro switch
11. Inner tank bracket, LH
12. Cam
13. Ice scoop link
14. Ice scoop
15. Back btmpanel
16. Back top panel
17. Clear window
18. Displaying PCB
19. Touch pad
20. Front top panel
21. Front btm panel
22. Ice basket
23. Foaming asm
24. Water filter

25. Inner tank bracket, RH
26. Synchronuous motor
27. Stainless wire
28. Condenser
29. DC Fan motor
30. Filter dryer
31. Copper tube filter
32. Silicon plug drain
33. Nylon plug drain
34. Silicon sealing pump
35. DC water pump
36. Compressor
37. Plate bottom
38. Rubber foot
39. Air grille

Warranty Information

WARNING: Keep ventilation openings, in the appliance enclosure or in the built-in structure, clear of obstruction.

WARNING: Do not damage the refrigerant circuit.

The manufacturer provides warranty in accordance with the legislation of the customer's own country of residence, with a minimum of 1 year (Germany: 2 years), starting from the date on which the appliance is sold to the end user

The warranty only covers defects in material or workmanship.

The repairs under warranty may only be carried out by an authorized service centre. When making a claim under the warranty, the original bill of purchase (with purchase date) must be submitted.

The warranty will not apply in cases of:

- Normal wear and tear
- Incorrect use, e.g. overloading of the appliance, use of non-approved accessories
- Use of force, damage caused by external influences
- Damage caused by non-observance of the user manual, e.g. connection to an unsuitable mains supply or non-compliance with the installation instructions
- Partially or completely dismantled appliances

Correct Disposal of this product



■ This marking indicates that this product should not be disposed with other household wastes throughout the EU. To prevent possible harm to the environment or human health from uncontrolled waste disposal, recycle it responsibly to promote the sustainable reuse of material resources. To return your used device, please use the return and collection systems or contact the retailer where the product was purchased. They can take this product

for environmental safe recycling.

Documents / Resources



Techomey DIM-26SN Portable Automatic Ice Maker [pdf] Instruction Manual
DIM-26EN A, DIM-26SN A, DIM-26SN Portable Automatic Ice Maker, DIM-26SN, Portable Auto
matic Ice Maker, Automatic Ice Maker, Ice Maker

References

- User Manual

[Manuals+](#), [Privacy Policy](#)

This website is an independent publication and is neither affiliated with nor endorsed by any of the trademark owners. The "Bluetooth®" word mark and logos are registered trademarks owned by Bluetooth SIG, Inc. The "Wi-Fi®" word mark and logos are registered trademarks owned by the Wi-Fi Alliance. Any use of these marks on this website does not imply any affiliation with or endorsement.