



# Technika TFL7W 7kg Front Load Washing Machine User Manual

[Home](#) » [TECHNIKA](#) » Technika TFL7W 7kg Front Load Washing Machine User Manual 

## Contents

- 1 Technika TFL7W 7kg Front Load Washing Machine
- 2 BEFORE YOU BEGIN
- 3 Explanation of Symbols
- 4 Electrical Safety
- 5 Disposal Regulations
- 6 INSTALLATION
- 7 PREPARATION
- 8 Using Detergent and Softener (continued)
- 9 Adjusting detergent amount
- 10 PREPARATION
- 11 OPERATION
- 12 Additional Programmes (continued)
- 13 Temperature Selection
- 14 MAINTENANCE & CLEANING
- 15 TROUBLESHOOTING
- 16 TECHNICAL SPECIFICATIONS
- 17 MANUFACTURER GUARANTEE
- 18 Documents / Resources
  - 18.1 References
- 19 Related Posts



**Technika TFL7W 7kg Front Load Washing Machine**



## **THANK YOU FOR YOUR PURCHASE**

### **Dear Customer,**

Congratulations on the purchase of your new product from Technika. We recommend you please take some time to read the instruction manual thoroughly to familiarise yourself with the functionality and operations to ensure optimum performance of your new appliance. After reading the manual, please store it in a safe and accessible location for future reference.

### **Installation**

The installation of your new appliance must be carried out by a qualified installer/technician in accordance to local regulations. Please ensure all packaging materials are disposed of correctly.

### **Customer Care**





Our Customer Care Centre is available should you wish to learn more about your appliance in relation to how to use it to its best potential, or tips on cleaning as well as available accessories. For Further Details Please Contact Our Customer Care Team

## **BEFORE YOU BEGIN**

Please read the user manual carefully before using the unit.

### **Explanation of Symbols**

Throughout this user manual, the following symbols are used:

Icon	Type	Meaning
	Warning / Caution	Serious injury or death risk
	Risk of electric shock	Dangerous voltage risk
	Hot surface	Warning; risk of injury from touching a hot surface
	Important / Note	Important information or useful hints about usage

## Packaging Information

- The packaging materials of the product are manufactured from recyclable materials in accordance with our National Environment Regulations.
- Do not dispose of the packaging wastes with the domestic waste or other wastes, discard them to the dedicated collection points designated by the local authorities.
- This product was manufactured using the latest technology in environmentally friendly conditions.

## FOR YOUR SAFETY

This section includes safety instructions which may help prevent from risk of personal injury or property damage. Failure to follow these instructions shall void any warranty.

### Life and Property Safety

Never place the product on a carpet-covered floor. Otherwise, a lack of airflow beneath the machine will cause electrical parts to overheat. This will cause problems with your product. Unplug the product if it is not in use. Always have the installation and repair procedures carried out by the Authorised Service Agent. The manufacturer shall not be held liable for damages that may arise from procedures carried out by unauthorised personnel. The water supply and draining hoses must be securely fastened and remain undamaged. Otherwise, there is the risk of water leakage.

While there is still water inside the product, never open the loading door or remove the filter. Otherwise, risk of flooding and injury from hot water will occur. Do not force open the locked loading door. The door will open immediately after the washing cycle has ended. If the door does not open, apply the solutions provided for the "Loading door cannot be opened" error in the Troubleshooting section. In case of forcing the loading door to open, the door and the lock mechanism may be damaged. Use detergents, softeners and supplements suitable for automated washing machines only. Follow the instructions on the label of textile products and the detergent package. The water supply pressure required to run the product is between 1 to 10 bars (0.1-1 MPa). Do not use old or used water inlet hoses on the new product. It may cause stains on your laundry.

### Hot Surface Safety

The glass of the loading door gets too hot while washing at higher temperatures. Therefore, do not allow children to touch the loading door glass while washing.

### Children's Safety

This product can be used by children at and above 8 years old and by persons whose physical, sensory or mental capabilities were not fully developed or who lack experience and knowledge provided that they are supervised or trained on the safe usage of the product and the risks it brings out. Children should not play with the product. Cleaning and maintenance work should not be performed by children unless they are supervised by someone. Children under my age should be kept away. Unless continuously supervised. Packaging materials are dangerous for children. Keep packaging materials in a safe place away from the reach of the children. Electrical products are dangerous for children. Keep children away from the product when it is in use. Do not allow them to play with the product. Use child lock to prevent children from intervening with the product. Do not forget to close the loading door when leaving the room where the product is located. Store all detergents and additives in a safe place away from the reach of the children by closing the cover of the detergent container or sealing the detergent package.

## Electrical Safety

if the product has a failure, it should not be operated unless it is repaired by the Authorised Service Agent! There is the risk of electric shock! This product is designed to resume operating in the event of powering on after a power interruption. If you wish to cancel the programme, see the "Cancelling the programme" section. Plug the product into a grounded outlet protected by a 16 A fuse. Do not wash the product by spraying or pouring water onto it! There is the risk of electric shock! Never touch the power cable plug with wet hands! Never unplug by pulling on the cable. Always press on the plug with one hand and pull out the plug by grabbing it with the other hand. Product should be undocked during insulation, maintenance, cleaning and repair procedures. If the power cable is damaged, it must be replaced by the manufacturer, authorized service or a similarly qualified person (preferably an electrician) or someone designated by the importer in order to Avoid possible risks.

## Disposal Regulations

This product complies with the EU WEEE Directive (2012/19/EU). This product bears a classification symbol for waste electrical and electronic equipment (WEEE). This product has been manufactured with high-quality parts and materials that can be reused and are suitable for recycling. Do not dispose of the waste product with normal domestic and other wastes at the end of its service life. Take it to the collection centre for the recycling of electrical and electronic equipment. Please consult your local authorities to learn about these collection centres.

## Compliance with RoHS Directive

The product you have purchased complies with EU RoHS Directive (2011/65/EU). It does not contain harmful and prohibited materials specified in the Directive.

## Intended Use

This product has been designed for domestic use. It is not for commercial purposes or it should not be used out of its intended use. The product must only be used for washing and rinsing of laundry that are marked accordingly. The manufacturer waives any responsibility arising from incorrect transportation. This appliance is intended to be used in household and similar applications such as

- staff kitchen areas in shops, offices and other working environments
- by clients in hotels, motels and other residential-type environments,
- bed and breakfast type environments; areas for communal use in blocks of flats or in launderettes.

## INSTALLATION

Your washing machine automatically detects the amount of laundry placed inside when selecting a program. While installing the product, before the first use, calibration should be done to ensure that laundry amounts are detected in the most accurate way. To do this, select the Drum Cleaning program and cancel the spin function. Start the program without laundry. Wait for the program to finish, which will take about 15 minutes. "The program name may vary depending on the model. For the appropriate program selection, review the program Preparation of the location and electrical, tap water and waste water installations at the place of installation is under the customer's responsibility. Make sure that the water inlet and discharge hoses as well as the power cable are not folded, pinched or crushed while pushing the product into its place after installation or cleaning procedures. Prior to installation, visually check if the product has any defects on it. If so, do not have it installed. Damaged products cause risks for your safety.

## Appropriate Installation Location

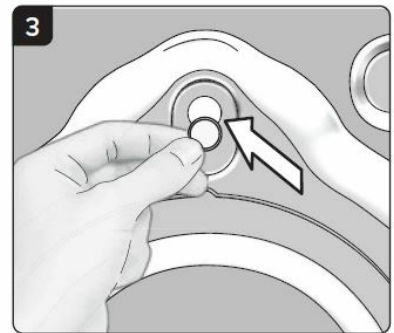
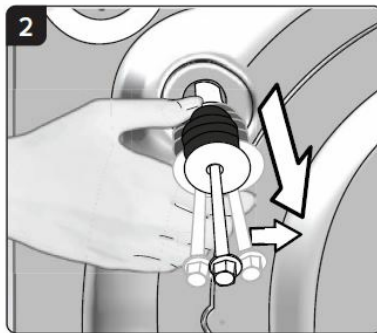
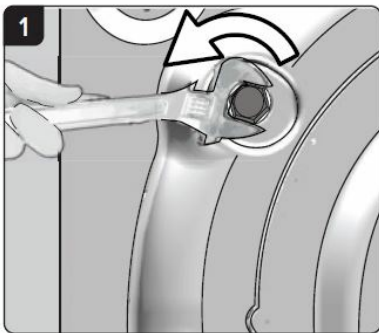
Place the product on a hard and level floor. Do not put it onto a carpet with a high pile or other similar surfaces. When the washing machine and dryer are placed on top of each other, their total weight – when loaded – amounts to 180 kg. Place the product on a solid and flat floor that has sufficient load-carrying capacity! Do not place the product on the power cable. Do not install the product in environments where the temperature falls below 0°C. Leaving a gap at the sides of the machine is suggested to reduce vibration and noise. On a graduated floor, do not place the product next to the edge or on a platform. Do not place heat sources such as stoves, irons, ovens, etc. on

he washing machine and do not use them on the product. Removing Packaging Reinforcement: Tilt the machine backwards to remove the packaging reinforcement. Remove the packaging reinforcement by pulling the ribbon. Do not make this operation alone by yourself.



### Removing the Transportation Locks

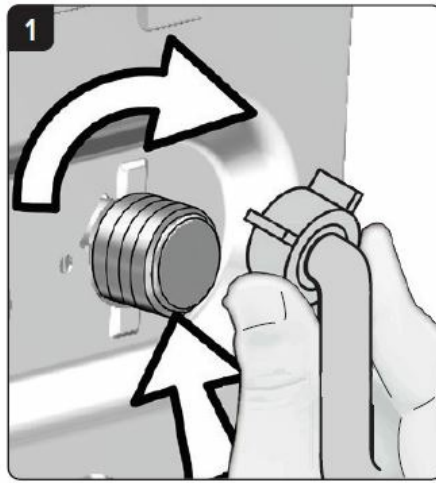
1. Loosen all bolts with an appropriate wrench until they turn freely.
2. Remove the transport safety bolts by turning them slightly.
3. Insert the plastic covers in the bag containing the user manual to the openings on the rear panel.
4. Remove the transportation safety bolts before operating the washing machine! Otherwise, the product will be damaged.
5. Keep the transportation safety bolts in a safe place to reuse when the washing machine needs to be moved again in the future.
6. Install the transport safety bolts in reverse order of the disassembly procedure.
- 7.



Never move the product without the transportation safety bolts properly fixed in place!

### Connecting the Water Supply

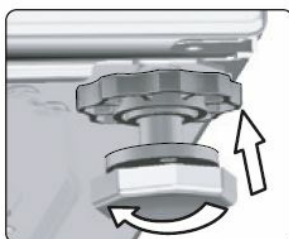
© It is necessary to have 10 – 80 litres of water flowing from the fully open tap in one minute to have your machine run smoothly. Attach a pressure-reducing valve if the water pressure is higher. © It is also recommended to attach a pressure-reducing valve if you experience overflow from the detergent dispenser during water fill between 3.5 to 10 bars (0.35 to 1 MPa). Models with a single water inlet should not be connected to the hot water tap. In such a case the laundry will get damaged or the product will switch to protection mode and will not operate.



1. Tighten the nuts of the hose by hand. Never use a tool when tightening the nuts.
2. When the hose connection is completed, check whether there is leak problems at the connection points by opening the taps fully.
3. If any leaks occur, turn off the tap and remove the nut. Retighten the nut carefully after checking the seal. In order to prevent water leaks and resultant damage, keep the taps closed when you do not use the product.

### Adjusting the Feet

In order to ensure that the product operates more silently and vibration-free, it must stand level and balance on its feet. Balance the machine by adjusting the feet. Otherwise, the product may move from its place and cause crushing and vibration problems. Do not use any tools to loosen the lock nuts. Otherwise, they will get damaged.

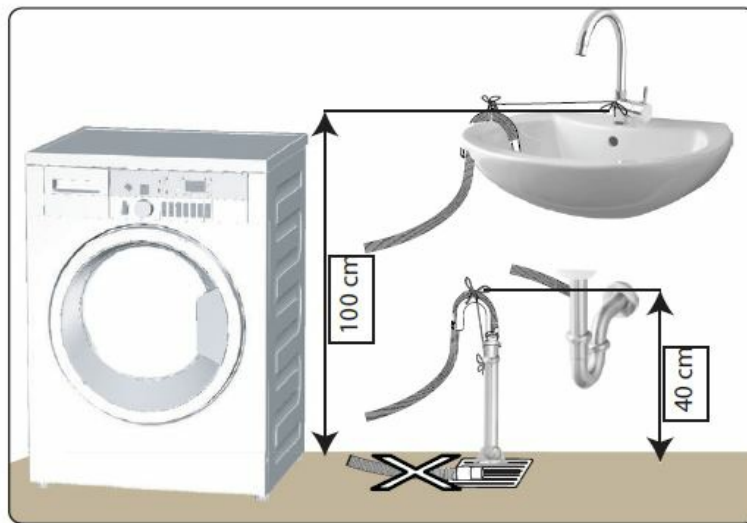


1. Loosen the lock nuts on the feet by hand.

2. Adjust the feet until the product stands in a stable and balanced way.
3. Tighten all lock nuts by hand again.

### Connecting the Drain Hose to the Drain

Attach the end of the drain hose directly to waste water drain, lavatory or bathtub. Your drain house will be flooded if the hose comes out of its housing during water discharge. Moreover, there is risk of scalding due to high washing temperatures! In order to prevent such situations and make sure that the machine performs water intake and discharge processes without any problem, fix the drain hose securely. Connect the drain hose to a minimum height of 40 cm and a maximum height of 100 cm. In case the drain hose is elevated after laying it on the floor level or close to the ground (less than 40 cm above the ground), water discharge becomes more difficult and the laundry may come out excessively wet. Therefore, follow the heights described in the figure. To prevent the waste water to go back into the machine again and to ensure easy drainage, do not immerse the end of the hose into the wastewater or do not insert it into the drain for more than 15 cm. If it is too long, cut it short.



The end of the hose should not be bent, it should not be stepped on and the hose must not be pinched between the drain and the machine. If the length of the hose is too short, use it by adding an original extension hose. Length of the hose may not be longer than 3.2 m. To avoid water leak failures, the connection between the extension hose and the drain hose of the product must be fitted well with an appropriate clamp as not to come off and leak.

### Electrical Connection

Connect the product to a grounded outlet protected by a 16 A fuse. Our company shall not be liable for any damages that will arise when the product is used without grounding in accordance with the local regulations. Connection must comply with national regulations. The wiring for the electrical outlet circuit must be sufficient to meet the appliance requirements. Use of a Ground Fault Circuit Interrupter (GFCI) is recommended. Power cable plug must be within easy reach after installation. If the current value of the fuse or breaker in the house is less than 16 Amps, have a qualified electrician install a 16 Amp fuse. The voltage specified in the "Technical specifications" section must be equal to your mains voltage. Do not make connections via extension cables or multi-plugs. Damaged power cables must be replaced by the authorised service agents.

### Initial Use

Before starting to use the product make sure that the preparations are made which are in line with the "Important Safety and Environment Instructions" and the instructions in the "Installation" section. To prepare the product for washing laundry, perform first operation in the Drum Cleaning programme. If this program is not available in your machine, apply the method which is described in the section "Cleaning the Loading Door and the Drum". Use an anti-limescale suitable for the washing machines. © Some water might have remained in the product due to the quality control processes in the production. It is not harmful for the product.



## PREPARATION

### Sorting the Laundry

Sort laundry according to type of fabric, colour, and degree of soiling and allowable water temperature. Always observe the instructions given on the garment care labels. **Preparing Laundry for Washing** Laundry items with metal attachments such as, underwiring, belt buckles or metal buttons will damage the product. Remove the metal pieces or wash such clothes by putting them in a laundry bag or pillow case. Take out all substances in the pockets such as coins, pens and paper clips, and turn the pockets inside out and brush. Such objects may damage the product or cause noise problems. Put small-size clothes such as infant socks and nylon stockings in a laundry bag or pillowcase. Place curtains in without compressing them. Remove curtain attachment items. Fasten zippers, sew loose buttons and mend rips and tears. Wash “Machine washable” or Hand washable labelled products only with an appropriate programme. Do not wash colours and whites together. New, dark-coloured cottons release a lot of dye. Wash them separately. Tough stains must be treated properly before washing.

Only use the dyes/colour changers and descaling agents which are appropriate for machine wash. Always follow the instructions on the package. Wash trousers and delicate laundry turned inside out. Keep laundry items made of Angora wool in a plastic bag in the freezer for a few hours before washing. This can reduce piling. Laundry that is subjected to materials such as flour, lime dust, milk powder, etc. must be shaken off before placing into the product. Such dust and powders on the laundry may build up on the inner parts of the product in time and can cause damage.

### Tips for Energy and Water Saving

The following information will help you use the product in an ecological and energy / water-efficient manner. Operate the product in the highest load capacity allowed for the programme you have selected, but do not overload. See, “Programme and consumption table”.

- Observe the temperature instructions on the detergent packaging.
- Wash slightly soiled laundry at low temperatures.
- Use faster programs for small quantities of lightly soiled laundry.
- Do not use prewash and high temperatures for laundry that is not heavily soiled or stained.
- If you plan to dry your laundry in a dryer, select the highest spin speed recommended during the washing process.
- do not use more detergent than the recommended on the detergent packaging.

### Loading the Laundry

1. Open the loading door.
2. Put the laundry items into the product in a loose manner.
3. Push the loading door to close until you hear a locking sound. Ensure that no items are caught in the door. The loading door is locked while a program is running.
4. The door lock will open immediately after the washing programme has ended. Then you can open the loading door.
5. If the door does not open, apply the solutions provided for the "Loading door cannot be opened" error in the Troubleshooting section.

### Correct Load Capacity

The maximum load capacity depends on the type of laundry, the degree of soiling and the desired washing programme. The product automatically adjusts the water amount according to the weight of the laundry put inside it. Comply with the information in the section "Programme and consumption table". When overloaded, the product's washing performance will drop. Moreover, noise and vibration problems may occur.

### Using Detergent and Softener

When using detergent, softener, starch, fabric dye, bleach and descaling agents; read the manufacturer's instructions written on the package and follow the dosages specified. Use a measuring cup if available.

The detergent drawer is composed of three compartments:



- (1) for prewash
- (2) for main wash
- (3) for softener
- (4/5) In addition, there is a siphon piece in the softener compartment.

- Detergent, softener and other cleaning agents
- Add detergent and softener before starting the washing programme.
- While the washing cycle is in progress, do not leave the detergent drawer open!
- When using a program without prewash, do not put any detergent into the prewash compartment (compartment no. "1").
- If you are using a program with prewash, start the machine after adding powder detergent to the prewash and main wash compartments (compartments 1 and 2).
- Do not select a program with prewash if you are using a detergent bag or dispensing ball.
- Place the detergent bag or the dispensing ball directly among the laundry in the product.
- If you are using liquid detergent, do not forget to place the liquid detergent container into the main wash compartment (compartment no. "2").

## Choosing the detergent type

- The detergent type to be used depends on the washing programme, fabric type and colour.
- Use different detergents for coloured and white laundry.
- Wash your delicate clothes only with special detergents (liquid detergent, wool shampoo, etc.) intended solely for delicate clothes and at suggested programmes
- When washing dark-coloured clothes and quilts, it is recommended to use liquid detergent.
- Wash woollens at the suggested programme with a special detergent made specifically for woollens.
- Please review the programme descriptions part for the suggested programme for different textiles.
- All recommendations about detergents are valid for a selectable temperature range of programmes. Use only detergents manufactured specifically for washing machines. Do not use soap powder.

## Using Detergent and Softener (continued)

### Adjusting detergent amount

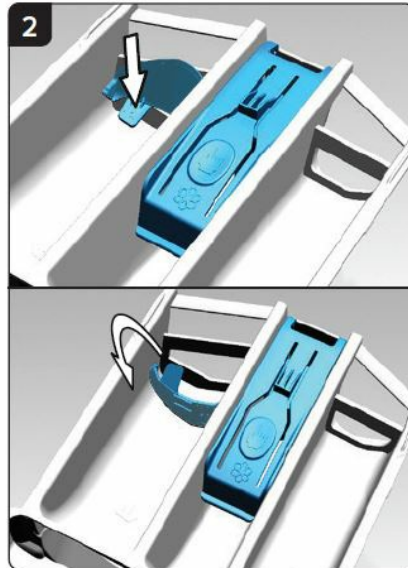
The amount of washing detergent to be used depends on the amount of laundry, the degree of soiling and water hardness. Do not use amounts exceeding the dosage quantities recommended on the detergent package to avoid problems of excessive foam, poor rinsing, financial savings and finally, environmental protection. Use less detergent for small loads, lightly soiled clothes and short-duration programmes, especially in soft water areas.

### Using softeners

Pour the softener into the softener compartment of the detergent drawer. Do not exceed the (max) level sign on the softener compartment. If the softener has lost its fluidity, dilute it with water before adding it in the detergent compartment. Do not use liquid detergents or other cleaning products other than fabric softeners produced for washing machines to soften the clothes.

### Using liquid detergents

1. If the product contains a liquid detergent cup: Put the liquid detergent container into compartment no "2". If the liquid detergent lost its fluidity, dilute it with water before putting it into the detergent container.
2. If the product is equipped with a liquid detergent compartment: When you want to use liquid detergent, press on the point shown to rotate the apparatus. The part that falls off will function as a barrier for the liquid detergent.
3. If required, clean the apparatus with water when it is in place or by removing it.



4. If you will use powder detergent, the apparatus must be secured at top position. The fan that you would see in this position will mix the powder detergent and help it to dissolve. If the product does not contain a liquid detergent cup:
5. Do not use liquid detergent for the prewash in a programme win breast Liquid detergent stains your clothes when used with the “End Time’ function that delays start time.
6. If you are going to use the end lime function, do not use liquid detergent

## Adjusting detergent amount

The amount of washing detergent to be used depends on the amount of laundry. the degree of soiling and water hardness. Do not use amounts exceeding the dosage quantities recommended on the detergent package to avoid problems of excessive foam, poor rinsing, financial savings and finally. environmental protection Use less detergent for small loads, lightly soiled clothes and short duration programmes especially in son areas using so tenders Pour the softener into the softener compartment of the detergent drawer. Do not exceed the (max«) level sign on the softener compartment. If the softener has lost its fluidity, dilute it with water before adding it in the detergent compartment. Do not use liquid detergents or other cleaning products other than fabric softeners produced for washing machines to soften the clothes

## Using liquid detergents

If the product contains a liquid detergent cup: Put the liquid detergent container into compartment no 2. If the liquid detergent lost its fluidity, dilute it with water before putting it into the detergent container. If the product is equipped with a liquid detergent compartment: when you want to use loid detergent oress on the point shown to rotate the apparatus. The part that falls off will function as a barrier for the liquid detergent to recur. clean the apparatus win waeer when it is in place or by removing it.

If you will use powder detergent, the apparatus must be secured at top position. The fan that you would see in this position will mix the powder detergent and help it to dissolve. If the product does not contain a liquid detergent

cup:

Do not use liquid detergent for the prewash in a programme with precast Liquid detergent stains your clothes when used with End time function delaying start time. If you are going to use the End Time function, do not use liquid detergent.

### Using Detergent and Softener (continued)

Using gel and tablet detergent If the gel detergent thickness is fluidal and your product does not contain a special liquid detergent container, put the gel detergent into the main wash detergent compartment during first water intake. If your product contains a liquid detergent container, fill the detergent into this container before starting the program. If the gel detergent thickness is not fluid or in the shape of a capsule liquid tablet, put it directly into the drum before washing. Put tablet detergents into the main wash compartment (compartment no. "2\*") or directly into the drum before washing.

### Using starch

Add liquid starch, powder starch or the dyestuff into the softener compartment. Do not use softener and starch together in a washing cycle. Wipe the inside of the product with a damp and clean cloth after using starch.

### Using limescale remover

When required, use limescale removers manufactured specifically for washing machines only.

### Using bleaches

Select a program with prewash and add the bleach at the beginning of the prewash. Do not put detergent in the prewash compartment. As an alternative application, select a programme with extra rinse and add the bleach while the product is taking water from the detergent compartment during first rinsing step. Do not use bleach and detergent by mixing them. Use just a little amount (approx. 50 ml) of bleach and rinse the clothes very well as it causes skin irritation. Do not pour the bleach onto the laundry. Do not use it with the coloured items. When using an oxygen-based bleach, select a programme which washes the laundry at a low temperature. Oxygen-based bleach can be used together with the detergent. However, if its thickness is not the same with the detergent, put the detergent first into compartment no. "2" in the detergent drawer and wait until the detergent flows while the product is taking in water. While the product continues taking in water, add bleach in the same compartment.

## PREPARATION

### Tips for Efficient Washing

	Clothes			
	Light colours & whites: 40-90°C	Colours: Cold – 40°C	Dark colours: Cold – 40°C	Delicates, woollens & silks: Cold – 40°C

<b>Soiling Level</b>	<b>Heavily soiled</b>  Difficult stains such as grass, coffee, fruits and blood	It may be necessary to pretreat the stains or perform a prewash. Powder and liquid detergents recommended for whites can be used at dosages recommended for heavily soiled clothes. It is recommended to use powder detergents to clean clay and soil stains and the stains that are sensitive to bleaches.	Powder and liquid detergents recommended for colours can be used at dosages recommended for heavily soiled clothes. It is recommended to use powder detergent to clean clay and soil stains and the stains that are sensitive to bleaches. Use detergents without bleach.	Liquid detergents suitable for colours and dark colours can be used at dosages recommended for heavily soiled clothes.	Prefer liquid detergent produced for delicate clothes. Woollen and silk clothes must be washed with special woollen detergents.
	<b>Normally soiled</b>  For example, stains caused by body on collars and cuffs	Powder and liquid detergents recommended for whites can be used at dosages recommended for normally soiled clothes.	Powder and liquid detergents recommended for colours can be used at dosages recommended for normally soiled clothes. Detergents which do not contain bleach should be used.	Liquid detergents suitable for colours and dark colours can be used at dosages recommended for normally soiled clothes.	Prefer liquid detergent produced for delicate clothes. Woollen and silk clothes must be washed with special woollen detergents.
	<b>Lightly soiled</b>  No visible stains exist	Powder and liquid detergents recommended for whites can be used at dosages recommended for lightly soiled clothes.	Powder and liquid detergents recommended for colours can be used at dosages recommended for lightly soiled clothes. Detergents which do not contain bleach should be used.	Liquid detergents suitable for colours and dark colours can be used at dosages recommended for lightly soiled clothes.	Prefer liquid detergent produced for delicate clothes. Woollen and silk clothes must be washed with special woollen detergents.

### Displayed Programme Time

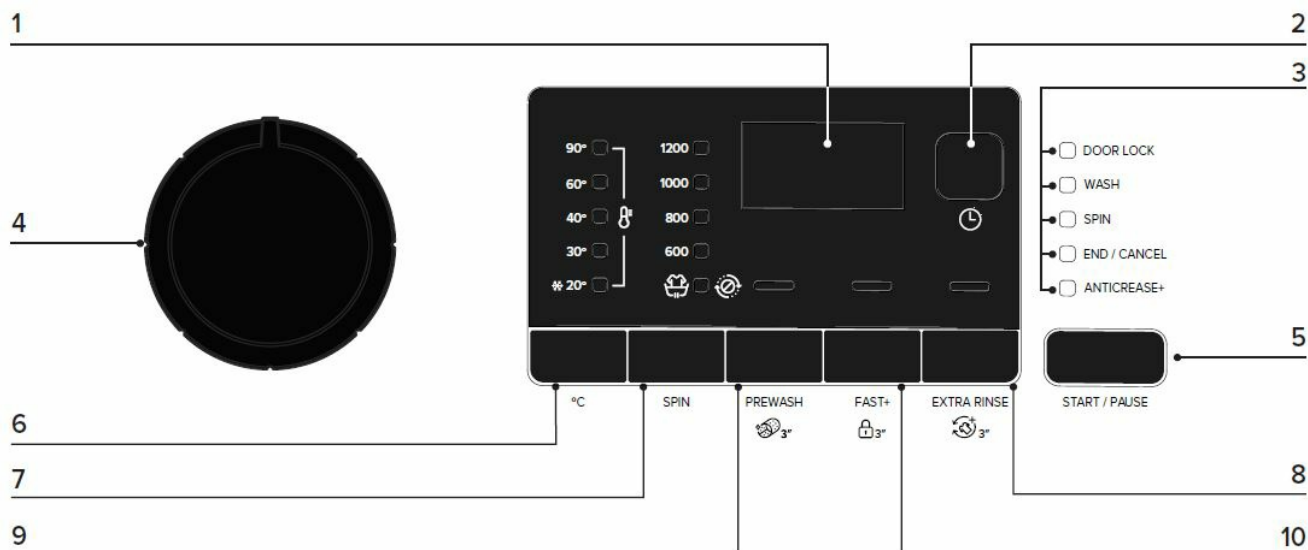
You can see the program duration on the display of your machine while selecting a program. Depending on the amount of laundry you have loaded into your machine, foaming, unbalanced load conditions, fluctuations in power supply, water pressure and programme settings, the programme duration is automatically adjusted while the programme is running.

### Special Case

At programme start of Cottons and Cotton Eco programmes, the display shows the duration of half load, which is the most common use case. After the programme starts, in 20-25 minutes actual load is detected by the machine. And if the detected load is higher than half load; the washing programme will be adjusted accordingly and the programme duration will increase automatically. You may follow this change on the display.

## OPERATION

### Control Panel



1. Display
2. End time adjustment button
3. Status indicators
4. Program selection knob
5. Start / Pause button
6. Temperature adjustment button
7. Spin Speed adjustment button
8. Extra Rinse / Anti-Crease Functions
9. PreWash
10. Drum Clean Function
11. Fast+ Function
12. Child Lock

## Preparing the Machine

1. Make sure that the hoses are connected tightly.
2. Plug in your machine.
3. Turn the tap on completely.
4. Place the laundry in the machine.
5. Add detergent and fabric softener.

## Programme Selection

1. Select the programme suitable for the type, quantity and soiling degree of the laundry in accordance with the "Programme and consumption table" and the temperature table below.
2. Use the Programme Selection knob to select the desired programme.

## Programme & Consumption Table

Selectable | \*Automatically selected, cannot be cancelled. | \* Energy label programme (AS/NZS 2040) If the maximum spin speed of the machine is lower, you can select values up to the maximum spin speed value See the programme description for the maximum load

Programme	Def ault Tem pera ture (°C)	Max . Lo ad (Kg)	Wat er C onsu mp tion (L)	Ener gy C onsu mpti on (k Wh)	Auxiliary Functions					Selectabl e temper ature ran ge (°C)
					Max. Spe ed** *	Pre Was h	Fa st+	Ext ra Rin se	Ant iCr eas e+	
Cottons	90	7	95	2.40	1200	●	●	●	●	Cold – 90
	60	7	95	1.80	1200	●	●	●	●	Cold – 90
	40	7	95	0.97	1200	●	●	●	●	Cold – 90
Cottons Eco	40**	7	72	0.937	1200					Cold – 40
Easy Care	60	3	75	1.35	1200	●	●	●	●	Cold – 60
	40	3	70	0.85	1200	●	●	●	●	Cold – 60
Daily Xpress / Super Short 14'	90	7	66	2.20	1200		●	●	●	Cold – 90
	60	7	66	1.20	1200		●	●	●	Cold – 90
	30	7	66	0.20	1200		●	●	●	Cold – 90
Daily Xpress / Super Short 14' + Fast+	30	2	40	0.15	1200		●	●	●	Cold – 90
Mixed	40	3.5	83	1.00	800	●	●		●	Cold – 40
Woollens / Hand Wash	40	1.5	62	0.55	1200			●		Cold – 40
Delicates	40	3.5	60	0.79	800			●		Cold – 40
Bedding	60	2	95	1.40	1000			●		Cold – 60
Sports	40	3.5	58	0.60	1200	●				Cold – 40
Dark Wash	40	3.5	88	1.05	1200	●	●		●	Cold – 40
StainExpert	60	4	85	1.70	1200	●	●			30 – 60
Shirts	60	3	65	1.40	800	●	●	●	●	Cold – 60
Allergy+	90	7	129	2.90	1200					20 – 90
Drum Clean	90	–	80	2.70	600					90

#### Programme & Consumption Table (continued)

Please read the installation section of the manual before first use. Water and power consumption may vary subject to changes in water pressure, water hardness and water temperature, ambient temperature, type and amount of laundry,

selection of auxiliary functions and spin speed, and changes in the mains voltage. © When selecting a program, you can see the washing duration on the display of your machine. Depending on the amount of laundry you have loaded into the machine, there might be a difference of 1 to 1.5 hours between the duration shown on the display and the actual duration of the washing programme. The duration will be corrected automatically right after the washing programme has started. The auxiliary functions in the table may vary according to the model of your machine. Auxiliary function selection modes can be changed by the manufacturing company. Existing selection modes can be removed or new selection modes can be added.

## **Main Programmes**

Depending on the type of fabric, use the following main programs.

### **Cotton**

You can wash your durable cotton laundry (sheets, bed linens, towels, bathrobes, underwear etc.) in this program. When you press the quick wash function key, the programme duration becomes notably shorter but effective washing is ensured thanks to intense washing movements. If the quick wash function is not selected, superior washing and rinsing performance is ensured for your heavily soiled laundry.

### **Easy Care**

You can use this programme to wash t-shirts, synthetic / cotton mix fabrics etc. Programme duration is notably shorter and efficient washing performance is ensured. If the quick wash function is not selected, superior washing and rinsing performance is ensured for your heavily soiled laundry.

### **Woollens / Hand Wash**

Use this program to wash your woollen/delicate clothes. Select the appropriate temperature complying with the tag of your clothes. Your laundry will be washed with very delicate movements to avoid any damage.

## **Additional Programmes**

For special cases, additional programs are available in the machine. Additional programmes may differ according to the model of the machine.

### **Cottons Eco**

Use to wash your normally soiled, durable cotton and linen laundry. Although it washes longer than all other programmes, it provides high energy and water savings. Actual water temperature may be different from the washing temperature stated. When washing less amount of laundry (e.g. half the capacity or less), the duration of programme steps may automatically become shorter. In this case, energy and water consumption will decrease more, providing a more economic wash. Moderately soiled laundry can be washed with a small amount of detergent to save energy and protect the environment.

### **Allergy+**

Use this program for laundry that requires an intense, long, anti-allergic and hygienic washing cycle at high temperatures. A high level of hygiene is ensured thanks to the long heating and additional rinsing step. The program was tested by the "VDE" institute while the temperature was 20°C, and its efficiency in bacteria and mould elimination was certified.

### **Delicates**

You can use this program to wash delicate laundry such as cotton / synthetic mix knitted clothes or socks. Washing movements in this programme are more delicate. Set the temperature to 20 degrees or use the Cold Wash option for clothes whose colour you wish to preserve.

### **Daily Xpress / Super Short 14'**

Use this program to wash your lightly soiled cotton clothes in a short time. The programme duration can be reduced to 14 minutes when the quick wash function is selected. When the quick wash function is selected, a maximum 2 (two) kg of laundry must be washed.

### **Dark Wash**

Use this programme to preserve the colour of your dark-coloured clothes and jeans. This programme provides high efficiency in washing, thanks to a special drum movement, even at low temperatures. It is recommended to use liquid detergent or woollen shampoo for dark-coloured laundry. Do not wash your delicate clothes that contain wool etc. in this programme.

### **Mixed**

You can use this program to wash cotton and synthetics together without the need to sort them.

## Additional Programmes (continued)

### Shirts

Use this program to wash shirts made of cotton, synthetic and synthetic blended fabrics together. This programme ensures that your clothes wrinkle less. When the quick wash function is selected, the pre-treatment algorithm is used. Apply the pretreatment chemical directly onto the clothes, or add it together with the detergent when the machine starts to take in water from the main wash compartment. This way, it will take you much shorter to get the performance you would normally get with a regular washing cycle. The life of your shirts will be longer.

### Sports

Use this program to wash outdoor / sports clothes that contain cotton / synthetic mix, as well as waterproof cloths like gore-tex. This programme washes your laundry delicately thanks to its special turning movements.

### StainExpert

Your washing machine has a special stain program ensuring that different types of stains are removed in the most efficient way. Use this program only to use durable, colour-fast cotton. Do not wash delicate or non-colourful clothes in this programme. You should check the tags of clothing before washing (recommended for shirts, trousers, shorts, t-shirts, baby clothes, pyjamas, aprons, tablecloths, bedding, duvet covers, sheets, bath/beach towels, regular towels, socks, and cotton underwear suitable for long washing cycles at a high temperature). With the auto stain programme, you can remove 24 types of stains grouped into two categories according to quick function selection. Here you can see the stain groups based on quick function selection. Below you will find the stain groups based on the quick function.

When the quick function IS selected	
<b>Blood</b>	Fruit juice
<b>Chocolate</b>	Ketchup
<b>Pudding</b>	Red wine
<b>Egg</b>	Curry
<b>Tea</b>	Jam
<b>Coffee</b>	Coal

When the quick function is NOT selected	
<b>Butter</b>	Food
<b>Grass</b>	Mayonnaise
<b>Mud</b>	Salad dressing
<b>Coke</b>	Make-up
<b>Sweat</b>	Machine Oil
<b>Collar Soil</b>	Baby food

1. Select the stain programme.
2. In the stain groups stated above, find the type of stain you want to remove and select the quick auxiliary function selection key to select the relevant group.
3. Carefully read the tag of the clothing and make sure that the temperature and spin speed selected are suitable.

## **Bedding**

Use this program to wash down coats, vests, jackets etc. that bear a “machine-washable” tag. Thanks to special spin profiles, it is ensured that water reaches the air gaps between feathers.

## **Special Programmes**

For specific applications, select any of the following programs.

## **Rinse**

Use when you want to rinse or starch separately.

## **Spin+Drain**

Use this program to remove the water on the clothes / in the machine. Before selecting this program, select the desired spin speed and press Start / Pause button. First, the machine will drain the water inside of it. Then, it will spin the laundry at the selected spin speed, and drain the water coming off of the laundry. If you only want to drain the water without spinning the laundry, select the “Spin+Pump program, and use the Spin Speed Adjustment button to select the No Spin function. Press the Start / Pause button. 1 Use a lower spin speed for delicate laundries.

## **Temperature Selection**

Whenever a new programme is selected, the recommended temperature for the selected programme appears on the temperature indicator. To decrease the temperature, press the Temperature Adjustment button. The temperature will decrease gradually. When the cold level is selected, temperature level lights will not be on. © If the programme has not reached the heating step, you can change the temperature without switching the machine to Pause mode.

## **Spin Speed Selection**

Whenever a new programme is selected, the recommended spin speed of the selected programme is displayed on the spin speed indicator. To decrease the spin speed, press the Spin Speed Adjustment button. Spin speed decreases gradually. Then, depending on the model of the product, “Rinse Hold” and “No Spin” options appear on the display. When the “No Spin” function is selected, rinse level indicator lights will not be on.

## **Spin Speed Selection (continued)**

### **Rinse hold**

If you are not going to unload your clothes immediately after the programme ends, you can use the rinse hold function to keep your laundry in the final rinsing water in order to prevent them from getting wrinkled when there is no water in the machine. Press the Start / Pause button after this process if you want to drain the water without spinning your laundry. The programme will resume where it left off, drain the water and then it will be complete. If you want to spin the laundry held in water, adjust the Spin Speed and press the Start / Pause button. The programme will resume. Water will be drained, laundry will be spun and the programme will end. If the program has not reached the spin step, you can change the spin speed without switching the machine to Pause mode.

## **Auxiliary Function Selection**

Select the desired auxiliary functions before starting the program. You can also select or cancel auxiliary functions suitable for the running program without pressing the Start / Pause button while the machine is operating. To do this, the machine must be in a step before the auxiliary function you are going to select or cancel. If the auxiliary function cannot be selected or cancelled, light of the relevant function will flash 3 times to warn the user. If a second auxiliary function conflicting with the first one is selected before starting the machine, the function selected first will be cancelled and the second auxiliary function selection will remain active.

An auxiliary function which is not compatible with the program cannot be selected. [Sep “Programme and consumption table”] Auxiliary Functions Prewash time Is only worthwhile for heavily soiled laundry. Not using the Prewash will save energy, water, and detergent and Prewash without detergent is recommended for tulle and curtains. Fast+ When this function is selected, the durations of relevant programmes are shortened by up to 50%. Thanks to the optimised washing steps, high mechanic activity and optimum water consumption, high washing

performance is achieved in spite of the reduced duration.

## **Auxiliary Functions (continued)**

### **Extra Rinse**

This function enables the machine to carry out another rinsing cycle in addition to the one carried out after the main wash. This is particularly useful for people with sensitive skin and will further reduce the chance of detergents remaining on clothing articles. Functions / Programmes Selected by Pressing the Function Buttons

### **Drum Clean**

To select this program, press and hold the PreWash button for 3 seconds. Use it regularly (every 1-2 months) to clean the drum and ensure hygiene is optimized. Run the program while the machine is totally empty. To obtain better results, put powdered limescale remover for washing machines into the detergent compartment no. "2". When the program is over, leave the loading door ajar so that the inside of the machine dries out. © This is not a washing program. It is a maintenance programme. © Do not run this program when there are any objects in the machine. If you try to do so, the machine will automatically detect that there is load inside and abort the program.

### **Child Lock**

You can prevent children from tampering with the machine by using the Child Lock feature. Thus you can avoid any changes during a washing cycle. If the Programme Selection knob is turned when the Child Lock is enabled, "Con" appears on the display. While the Child Lock is enabled, you cannot make any change in the programs, the selected temperature the speed or the auxiliary functions

### **To enable Child Lock**

Press and hold the Fast+ Function button for 3 seconds. While you're holding the button pressed for 3 seconds, CO3, CO2 and CO1 will be displayed respectively. Then, "Con" will be displayed to warn the user that child lock is enabled. If you press any button or turn the Programme Selection knob while the Child Lock is enabled, the same warning will be displayed.

### **To disable Child Lock**

Press and hold the Fast+ Function button for 3 seconds while the program is running. While you're holding the button pressed for 3 seconds, CO3, CO2 and CO1 will be displayed respectively. Then, "COF" will be displayed to warn the user that child lock is disabled. O The child lock can only be enabled / disabled when a wash cycle is in progress.

## **Functions / Programmes Selected by Pressing the Function Buttons (continued)**

© In addition to the method above, to deactivate the Child Lock, switch the Programme Selection knob to On / Off position when no programme is running, and select another program. © Child Lock will not be disabled after a power failure or unplugging.

### **AntiCrease+**

If you press and hold the Extra Rinse Function button for 3 seconds, this function will be selected and the programme status light will turn on. When this function is selected, the drum will rotate for up to eight hours to ensure that the clothes do not crease at the end of the programme. At any time during these eight hours, you can cancel the programme and unload the machine. Just press any button or turn the program selection knob to end the function. The program status light will remain on even if you end the function by pressing any button. If you end the function by turning the programme selection knob, the program follow-up light will go off. If you do not cancel the function by pressing the Extra Rinse Function button for 3 seconds, it will be used in the next washing cycles as well.

### **End Time Adjustment**

The End Time Adjustment function allows you to set the end time of the programme up to 19 hours. You can increase this time by 1-hour intervals. © Please do not use liquid detergent if you have selected the End Time Adjustment function. Stains might remain on the clothes.

1. Open the loading door, place the laundry and add detergent, etc.

2. Select the washing programme, temperature, spin speed and, if required, the auxiliary functions.
3. Press the End Time Adjustment button and select the desired time. Press the Start / Pause button. The delayed end time you have set will be displayed. The countdown will start for delayed end. On the display, “ \_ ” will move up and down next to the delayed end time. If the programme has not started, you can add laundry into the machine during the delayed end time.
4. At the end of the countdown, duration of the selected programme will be displayed. “ ” will disappear and the selected program will start.

### **End Time Adjustment (continued)**

Changing the delayed end time If you want to change the time during countdown:

Turn the programme selection knob to cancel the delayed end time function, and then set the desired time again.

1. Press the End Time Adjustment button. When pressed for the first time, the programme duration will be rounded up to the closest whole number time. Each following press will increase the time by an hour.
2. If you want to decrease the delayed end time, press the End Time Adjustment button consecutively until the desired time is displayed.

### **Cancelling the delayed end function**

If you want to cancel the delayed end time countdown and start the programme immediately:

1. Set the Programme Selection knob to any programme. This way, the Delayed End time will be cancelled. The End / Cancel light will flash continuously.
2. Then, select the programme you want to run again.
3. Press Start / Pause button to start the programme.

### **Starting the Programme**

1. Press Start / Pause button to start the programme.
2. Programme follow-up light showing the startup of the programme will turn on. © If no programme is started or no key is pressed within 10 minutes during the programme selection process, the display lights will go off.
3. Once the Programme
4. Selection knob is turned or any button is pressed, display lights will turn on again.

### **Starting the Programme**

1. Press Start / Pause button to start the programme.
2. Programme follow-up light showing the startup of the programme will turn on. © If no programme is started or no key is pressed within 10 minutes during the programme selection process, the display lights will go off.  
Once the Programme
3. Selection knob is turned or any button is pressed, display lights will turn on again.

### **Progress of the Programme**

Progress of a running programme can be followed from the Programme Follow-up indicator. At the beginning of each programme step, the relevant indicator light will turn on. © If the “Anti-crease+” auxiliary function has been selected, “End” LED and “Anticrease+” LED will be on at the same time while this step is continuing. To end the programme while the “Anticrease+” step is running, simply press any button or turn the programme selection

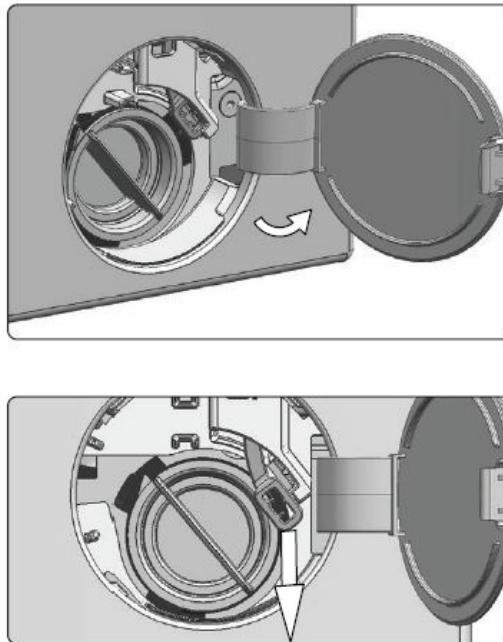
knob.

### **Progress of the Programme (continued)**

You can change the auxiliary functions, speed and temperature settings without stopping the programme flow while the programme is running. To do this, the change you are going to make must be something that will be carried out after the programme step that is running. If the change is not suitable, relevant lights will flash 3 times. If the machine does not proceed to the spinning step, the Rinse Hold function might be active or the automatic unbalanced load detection system might be activated due to the unbalanced distribution of the laundry in the machine.

### **Loading Door Lock**

There is a locking system on the loading door of the machine that prevents opening of the loading door in cases when the water level is unsuitable. Loading door light will start flashing when the machine is switched to Pause mode. The machine checks the level of the water inside. If the level is suitable, the loading door light will turn off and the loading door can be opened within 1-2 minutes. If the level is unsuitable, the loading door light will remain on and the loading door cannot be opened. If you are obliged to open the loading door while the Loading Door light is on, you must cancel the current programme. See "Cancelling the programme".



Opening the loading door in case of power failure: © In case of a power failure, you can use the loading door emergency handle under the pump filter lid to manually open the loading door. Before opening the loading door, make sure that there is no water in the machine to avoid flooding. Water may be hot and could cause scalding.

- Turn off and unplug the appliance.
- Open the pump filter lid.
- Remove the loading door emergency handle behind the filter cover with a tool.
- Open the loading door by pulling the loading door emergency handle downwards.
- Try to pull the handle downwards again if the loading door is not opened.
- Bring the loading door emergency handle to its original position after opening the loading door.

### **Changing the Selections After the Programme has Started**

Press the Start / Pause to switch the machine to pause mode while a programme is running. The light of the current program will flash on the Programme Follow-up indicator, indicating that the machine has switched to pause mode. Also, when the loading door is ready to be opened, the Loading Door light will turn off in addition to the program step light. Changing the auxiliary function, speed and temperature Depending on the step the

programme has reached, you can cancel or select auxiliary functions. See “Auxiliary function selection”. You can also change the speed and temperature settings. See “Spin speed selection” and “Temperature selection”. If no change is allowed, the relevant light will flash 3 times.

### **Adding and removing laundry**

1. Press the “Start / Pause” button to pause the machine. The program follow-up light of the relevant step during which the machine was switched into the pause mode will flash.
2. Wait until the Loading Door can be opened.
3. Open the loading door and add or take out laundry.
4. Close the loading door.
5. Make changes in auxiliary functions, temperature and speed settings if necessary.
6. Press the “Start / Pause” button to start the machine.

### **Cancelling the Programme**

To cancel the programme, turn the Programme Selection knob to select another programme. Previous programme will be cancelled. End / Cancel light will flash continuously to notify that the programme has been canceled. When you turn the Programme Selection knob, the machine will end the programme but will not discharge the water inside. When you select and start a new programme, the newly selected programme will start depending on the step the previous programme was canceled in. For example, the machine may take in additional water or continue to wash with the water inside. Depending on the step where the programme was canceled in, you may have to add detergent and softener again for the programme you have selected anew.

### **End of Programme**

1. At the end of the program, “End” will be displayed.
2. Wait until the light of the loading door goes off completely.
3. Switch the program selection knob to On / Off to switch off the machine.
4. Take out your laundry and close the loading door. Your machine is now ready for the next washing cycle.

### **‘Pause Mode’ Function**

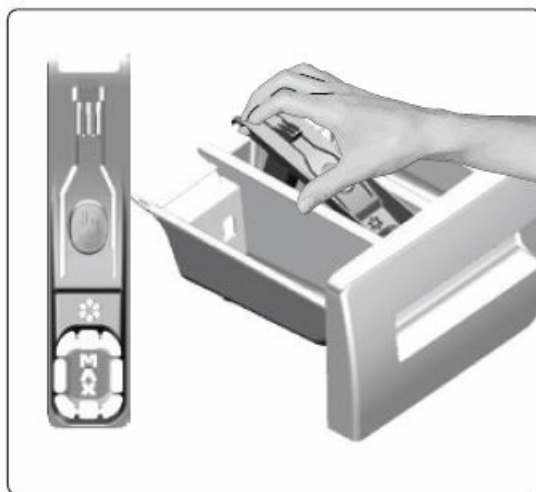
After using the On / Off button to switch on the machine, if you do not start any programme in the selection step or do not perform anything else, or if you do not do anything in 10 minutes after the selected programme has ended, the machine will automatically switch to energy saving mode. Also, if your product has a display that shows programme time, this display will completely turn off. If you turn the Programme Selection knob or touch any button, the lights and the display will switch back to the previous position. The selections you make when exiting the energy efficiency mode may change. Check if your selections are correct before starting the programme. If necessary, make adjustments again. This is not an error.

## **MAINTENANCE & CLEANING**

Service life of product extends and frequently experienced problems will be reduced if it is cleaned at regular intervals.

### **Cleaning the Detergent Drawer**

Clean the detergent drawer at regular intervals (every 4-5 washing cycles) as shown below in order to prevent accumulation of powder detergent in time.



1. Press the dotted point on the siphon in the softener compartment and pull towards you until the compartment is removed from the machine
2. Lift the rear part of the siphon to remove it as illustrated. If more than normal amount of water and softener mixture starts to gather in the softener compartment, the siphon must be cleaned.
3. Wash the detergent drawer and the siphon with plenty of lukewarm water in a washbasin. In order to prevent the residues to contact your skin, clean it with an appropriate brush by wearing a pair of gloves.
4. Insert the drawer back into its place after cleaning and make sure that it is seated well.

### **Cleaning the Loading Door and the Drum**



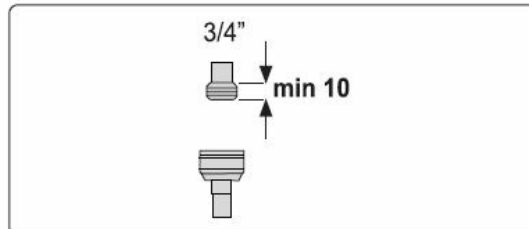
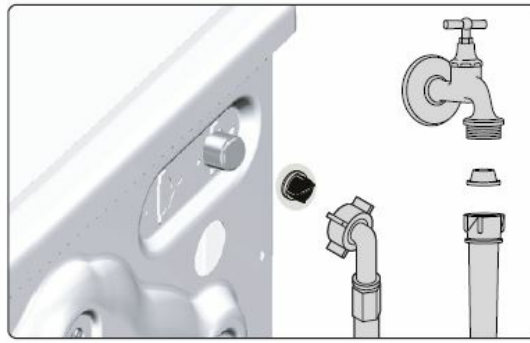
For products with drum cleaning programme, please see Operating the product – Programmes. G Repeat Drum Cleaning process in every 2 months. Use an detergent / anti-limescale suitable for the washing machines. After every washing make sure that no foreign substance is left in the drum. If the holes on the bellow shown in the figure is blocked, open the holes using a toothpick. G Foreign metal substances will cause rust stains in the drum. Clean the stains on the drum surface by using cleaning agents for stainless steel. Never use steel wool or wire wool. These will damage the painted, chromated and plastic surfaces.

### **Cleaning the Body and Control Panel**

Wipe the body of the machine with soapy water or non-corrosive mild gel detergents as necessary, and dry with a soft cloth. Use only a soft and damp cloth to clean the control panel.

### **Cleaning the Water Intake Filters**

There is a filter at the end of each water intake valve at the

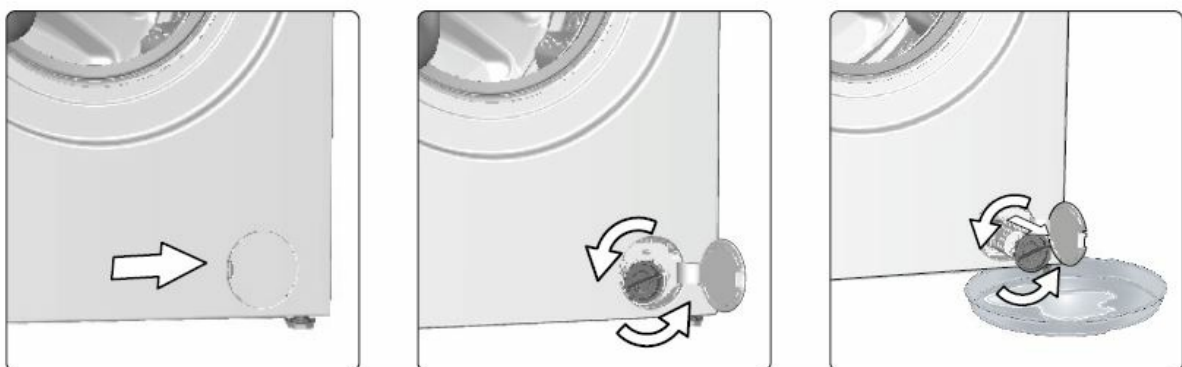


the rear of the machine and also at the end of each water intake hose where they are connected to the tap. These filters prevent foreign substances and dirt in the water to enter the washing machine. Filters should be cleaned as they do get dirty.

### Close the taps

1. Remove the nuts of the water intake hoses to access the filters on the water intake valves.
2. Clean them with an appropriate brush. If the filters are too dirty, remove them from their places with a pliers and clean in this way.
3. Take out the filters on the flat ends of the water intake hoses together with the gaskets and clean thoroughly under running water.
4. Replace the seals and filters carefully and tighten their nuts by hand ensuring there are no leaks. 3/4" min 10

### Draining Remaining Water and Cleaning the Pump Filter



The filter system in your machine prevents solid items such as buttons, coins and fabric fibres clogging the pump impeller during discharge of washing water. Thus, the water will be discharged without any problem and the service life of the pump will extend. If the machine fails to drain water, the pump filter is clogged. Filter must be cleaned whenever it is clogged or in every 3 months. Water must be drained off first to clean the pump filter. In addition, prior to transporting the machine (e.g., when moving to another house) and in case of freezing of the water, water may have to be drained completely.

### Draining Remaining Water and Cleaning the Pump Filter (continued)

© Foreign substances left in the pump filter may damage your machine or may cause noise problem. If the

product is not being used, shut the tap shut, remove mains pipe and drain the water inside the machine against any likely freezing.

©After each use, turn off the water tap to which the mains hose is connected.

### **In order to clean the dirty filter and discharge the water**

Unplug the machine to cut off the supply power. The temperature of the water inside the machine may rise up to 90°C. To avoid the burning risk, clean the filter after the water inside the machine is cooled down.

### **Open the filter cover**

Follow the below procedures in order to drain water. The product does not have an emergency water drain hose, in order to drain the water: In order to collect the water to flow out of the filter, place a large vessel in front of the filter. Turn and loosen the pump filter until water starts to flow (counterclockwise). Fill the flowing water into the container you have placed in front of the filter. Always keep a piece of cloth handy to absorb any spilled water. When the water inside the machine is finished, take out the filter completely by turning it.4. Clean any residues inside the filter as well as fibres, if any, around the pump impeller region. Replace the filter. If the filter cap is composed of two pieces, close the filter cap by pressing on the tab. If it is one piece, seat the tabs in the lower part into their places first, and then press the upper part to close

## **TROUBLESHOOTING**

Problem	Possible Cause	Try
<b>Programmes do not start after the loading door is closed</b>	a) Start / Pause / Cancel button is not pressed.	a) Press Start / Pause / Cancel button.
	b) It may be difficult to close the loading door in case of excessive loading.	b) Reduce the amount of laundry and make sure that the loading door is closed properly.
<b>Programme cannot be started or selected</b>	a) The product has switched to self protection mode due to a supply problem (line voltage, water pressure, etc.)	a) To cancel the programme, turn the Programme Selection knob to select another programme. Previous programme will be cancelled (see. "Cancellation of programme").
<b>Water inside the product</b>	a) Some water has remained in the product due to the quality control processes in the production.	a) This is not a failure; water is not harmful to the product.
<b>The product does not take water in</b>	a) Tap is turned off	a) Turn on the taps.
	b) Water inlet hose is bent.	b) Flatten the hose.
	c) Water inlet filter is clogged.	c) Clean the filter.
	d) Loading door is not closed.	d) Close the door.
<b>The product does not drain water</b>	a) Water drain hose is clogged or twisted.	a) Clean or flatten the hose.
	b) Pump filter is clogged.	b) Clean the pump filter.
<b>Product vibrates or makes noise</b>	a) Product is standing unbalanced.	a) Stable the product by adjusting the feet.
	b) A hard substance has entered into the pump filter.	b) Clean the pump filter.
	c) Transportation safety bolts are not removed.	c) Remove the transportation safety bolts.
	d) Laundry quantity in the product is too little.	d) Add more laundry to the product.
	e) Excessive laundry is loaded in the product.	e) Take out some of the laundry from the product or distribute the load by hand to balance it homogeneously in the product.
	f) Product is leaning on a rigid item.	f) Make sure that the product is not leaning on anything.

<b>Problem</b>	<b>Possible Cause</b>	<b>Try</b>
<b>There is water leaking from the bottom of the product</b>	a) Water drain hose is clogged. Product stopped shortly after the programme started.	a) Clean or flatten the hose.
	b) Pump filter is clogged.	b) Clean the pump filter.
<b>Product stopped shortly after the programme started</b>	a) Machine has stopped temporarily due to low voltage.	a) Product will resume running when the voltage restores to the normal level.
<b>Product directly drains the water it takes in</b>	a) Draining hose is not at adequate height.	a) Connect the water draining hose as described in the user manual.
<b>No water can be seen in the product during washing</b>	a) Water is inside the invisible part of the product.	a) This is not a failure.
<b>Loading door cannot be opened</b>	a) Loading door lock is activated because of the water level in the product.	a) Drain the water by running the Pump or Spin programme.
	b) Product is heating up the water or it is at the spinning cycle.	b) Wait until the programme completes.
	c) Loading door may be stuck because of the pressure it is subjected to.	c) Grab the handle and push and pull the loading door to release and open it.
	d) If there is no power, loading door of the product will not open.	d) To open the loading door, open the pump filter cap and pull down the emergency handle positioned at the rear side of the said cap. See "Loading door lock.

Problem	Possible Cause	Try
<b>Washing takes longer than specified in the user manual*</b>	a) Water pressure is low.	a) Product waits until taking in adequate amount of water to prevent poor washing quality due to the decreased amount of water. Therefore, the washing time extends.
	b) Voltage is low.	b) Washing time is prolonged to avoid poor washing results when the supply voltage is low.
	c) Input temperature of water is low.	c) Required time to heat up the water extends in cold seasons. Also, washing time can be lengthened to avoid poor washing results.
	d) Number of rinses and / or amount of rinse water have increased.	d) Product increases the amount of rinse water when good rinsing is needed and adds an extra rinsing step if necessary.
	e) Excessive foam has occurred and automatic foam absorption system has been activated due to too much detergent usage.	e) Use recommended amount of detergent.
<b>Programme time does not countdown. (On models with display)*</b>	a) Timer may stop during water intake.	a) Timer indicator will not countdown until the product takes in adequate amount of water. The product will wait until there is sufficient amount of water to avoid poor washing results due to lack of water. Timer indicator will resume countdown after this.
	b) Timer may stop during heating step.	b) Timer indicator will not countdown until the product reaches the selected temperature.
	c) Timer may stop during spinning step.	c) Automatic unbalanced load detection system is activated due to the unbalanced distribution of the laundry in the product.

Problem	Possible Cause	Try
<b>Programme time does not countdown*</b>	a) There is unbalanced load in the product.	a) Automatic unbalanced load detection system is activated  due to the unbalanced distribution of the laundry in the product.
<b>Product does not switch to spinning step*</b>	a) There is unbalanced load in the product.	a) Automatic unbalanced load detection system is activated  due to the unbalanced distribution of the laundry in the product.
	b) The product will not spin if water is not drained completely.	b) Check the filter and the draining hose.
	c) Excessive foam has occurred and automatic foam absorption system has been activated due to too much detergent usage.	c) Use recommended amount of detergent.
<b>Washing performance is poor: Laundry turns gray**</b>	a) Insufficient amount of detergent has been used over a long period of time.	a) Use the recommended amount of detergent appropriate for water hardness and the laundry.
	b) Washing has been made at low temperatures for a long time.	b) Select the proper temperature for the laundry to be washed.
	c) Insufficient amount of detergent is used with hard water.	c) Using insufficient amount of detergent with hard water causes the soil to stick on the cloth and this turns the cloth into gray in time. It is difficult to eliminate graying once it happens. Use the recommended amount of detergent appropriate for water hardness and the laundry.
	d) Excessive amount of detergent is used.	d) Use the recommended amount of detergent appropriate for water hardness and the laundry.

Problem	Possible Cause	Try
<b>Washing performance is poor: Stains persist or the laundry is not whitened**</b>	a) Insufficient amount of detergent is used.	a) Use the recommended amount of detergent appropriate for water hardness and the laundry.
	b) Excessive laundry is loaded in.	b) Do not load the product in excess. Load with amounts recommended in the "Programme and consumption table".
	c) Wrong programme and temperature were selected.	c) Select the proper programme and temperature for the laundry to be washed.
	d) Wrong type of detergent is used.	d) Use original detergent appropriate for the product.
	e) Excessive amount of detergent is used.	e) Put the detergent in the correct compartment.  Do not mix the bleaching agent and the detergent with each other.
<b>Washing performance is poor: Oily stains appeared on the laundry**</b>	a) Regular drum cleaning is not applied.	a) Clean the drum regularly. For this procedure, please see "Cleaning the loading door and the drum".
<b>Washing performance is poor: Clothes smell unpleasantly**</b>	a) Odours and bacteria layers are formed on the drum as a result of continuous washing at lower temperatures and / or in short programmes.	a) Leave the detergent drawer as well as the loading door of the product ajar after each washing. Thus, a humid environment favorable for bacteria cannot occur in the machine.
<b>Colour of the clothes faded**</b>	a) Excessive laundry was loaded in.	a) Do not load the product in excess.
	b) Detergent in use is damp.	b) Keep detergents closed in an environment free of humidity and do not expose them to excessive temperatures.
	c) A higher temperature was selected.	c) Select the proper programme and temperature according to the type and soiling degree of the laundry.

Problem	Possible Cause	Try
<b>Washing machine does not rinse well</b>	a) The amount, brand and storage conditions of the detergent used are inappropriate.	a) Use a detergent appropriate for the washing machine and your laundry. Keep detergents closed in an environment free of humidity and do not expose them to excessive temperatures.
	b) Detergent was put in the wrong compartment.	b) If detergent is put in the prewash compartment although prewash cycle is not selected,  the product can take this detergent during rinsing or softener step.  Put the detergent in the correct compartment.
	c) Pump filter is clogged.	c) Check the filter.
	d) Drain hose is folded.	d) Check the drain hose.
<b>Laundry became stiff after washing**</b>	a) Insufficient amount of detergent is used.	a) Using insufficient amount of detergent or the water hardness can cause the laundry to become stiff in time. Use appropriate amount of detergent according to the water hardness.
	b) Detergent was put in the wrong compartment.	b) If detergent is put in the prewash compartment although prewash cycle is not selected,  the product can take this detergent during rinsing or softener  step. Put the detergent in the correct compartment.
	c) Detergent was mixed with the softener.	c) Do not mix the softener with detergent. Wash and clean the drawer with hot water.

Problem	Possible Cause	Try
---------	----------------	-----

<p><b>Laundry does not smell like the softener**</b></p>	<p>a) Detergent was put in the wrong compartment.</p> <p>b) Detergent was mixed with the softener.</p>	<p>a) If detergent is put in the prewash compartment although prewash cycle is not selected, the product can take this detergent during rinsing or softener step. Wash and clean the drawer with hot water. Put the detergent in the correct compartment.</p> <p>b) Do not mix the softener with detergent. Wash and clean the drawer with hot water.</p>
<p><b>Detergent residue in the detergent drawer* *</b></p>	<p>a) Detergent was put in wet drawer.</p> <p>b) Detergent has gotten damp.</p> <p>c) Water pressure is low.</p> <p>d) The detergent in the main wash compartment got wet while taking in the prewash water. Holes of the detergent compartment are blocked.</p> <p>e) There is a problem with the detergent drawer valves.</p> <p>f) Detergent was mixed with the softener.</p> <p>g) Regular drum cleaning is not applied.</p>	<p>a) Dry the detergent drawer before putting in detergent.</p> <p>b) Keep detergents closed in an environment free of humidity and do not expose them to excessive temperatures.</p> <p>c) Check the water pressure.</p> <p>d) Check the holes and clean if they are clogged.</p> <p>e) Call the Authorised Service Agent.</p> <p>f) Do not mix the softener with detergent. Wash and clean the drawer with hot water.</p> <p>g) Clean the drum regularly. For this procedure, please see "Cleaning the loading door and the drum".</p>

Problem	Possible Cause	Try
<b>Too much foam forms inside the product**</b>	a) Too much foam forms inside the product. (**)	a) Use detergents appropriate for the washing machine.
	b) Excessive amount of detergent is used.	b) Use only sufficient amount of detergent.
	c) Detergent was stored under improper conditions.	c) Store detergent in a closed and dry location. Do not store in excessively hot places.
	d) Some meshed laundry such as tulle may foam too much because of their texture.	d) Use smaller amounts of detergent for this type of item.
	e) Detergent was put in the wrong compartment.	e) Put the detergent in the correct compartment.
	f) Softener is being taken early by the product.	f) There may be problem in the valves or in the detergent drawer. Call the Authorised Service Agent.
<b>Foam is overflowing from the detergent drawer</b>	a) Too much detergent is used.	a) Mix 1 tablespoonful softener and ½L water and pour into the main wash compartment of the detergent drawer.
<b>Laundry remains wet at the end of the programme)</b>	a) Excessive foam has occurred and automatic foam absorption system has been activated due to too much detergent usage.	a) Use recommended amount of detergent.

The product does not switch to a spinning step when the laundry is not evenly distributed in the drum to prevent any damage to the product and to its surrounding environment. Laundry should be rearranged and re-spun. Regular drum cleaning is not applied. Clean the drum regularly. See “Cleaning the Loading Door and the Drum”, If you cannot eliminate the problem although you follow the instructions in this section, consult your dealer or the Authorised Service Agent. Never try to repair a nonfunctional product yourself.

## TECHNICAL SPECIFICATIONS

The packaging materials of the product are manufactured from recyclable materials in accordance with our National Environment Regulations. Do not dispose of the packaging materials together with the domestic or other wastes. Take them to the packaging material collection points designated by the local authorities. Technical specifications of the washing machine are subject to specification without notice to improve the quality of the product. Figures in this manual are schematic and may not match the product exactly. Values stated on markers on the washing machine or in the other published documentation accompanying with the washing machine are obtained in the laboratory in accordance with the relevant standards. Depending on operational and environmental conditions of the washing machine, these values may vary.

<b>Height</b>	84cm
<b>Width</b>	60cm
<b>Depth</b>	59cm
<b>Capacity (Max.)</b>	7kg
<b>Spin Speed (Max.)</b>	1200rpm
<b>Net weight</b>	34kg
<b>Electrical Input (V / Hz)</b>	220-240V / 50Hz
<b>Total Current (A)</b>	10
<b>Total Power (W)</b>	2000-2350
<b>Main Model Code</b>	9211

## MANUFACTURER GUARANTEE

This warranty is provided in Australia by Glen Dimplex Australia Pty Limited ABN 69 118 275 460 (Phone number 1300 556 816) and in New Zealand by Glen Dimplex New Zealand Limited NZBN 9429000069823 (Phone number 09 274 8265) in respect of the Technika product.

### Technika Express Warranty

Subject to the exclusions below, we warrant that the product will not have any electrical or mechanical breakdowns within:

- In the case of Technika products used for personal, domestic or household purposes, a period of 2 years from the date the product is purchased as a brand-new product from a retailer located in Australia / New Zealand.
- In the case of Technika products used for purposes other than personal, domestic or household purposes (including business or commercial use), a period of 90 days from the date the product is purchased as a brand-new product from a retailer located in Australia / New Zealand. Technika products are designed and intended for domestic use only; and
- All warranty repairs must be carried out by Glen Dimplex or their nominated service agent.

Note: Warranty periods detailed above may vary in line with agreements with select retail and builder partners and may differ between Australia and New Zealand. The benefits conferred by this express warranty are in addition to the Consumer Guarantees referred to in section 3 and any other statutory rights you may have under the Australian / New Zealand Consumer Law and / or other applicable laws.

### Warranty Exclusions

This express warranty does not apply where:

- The product has been installed, used or operated otherwise than in accordance with the product manual or other similar documentation provided to you with the product;
- The product requires repairs due to damage resulting from accident, misuse, incorrect installation, insect or vermin infestation, improper liquid spillage, cleaning or maintenance, unauthorised modification, use on an incorrect voltage, power surges and dips, voltage supply problems, tampering or unauthorised repairs by any persons, use of defective or incompatible accessories or exposure to abnormally corrosive conditions, events

independent of human control which occurred after the goods left the control of Glen Dimplex;

- The repair relates to the replacement of consumable parts such as fuses and bulbs or any other parts of the product which require routine replacement;
- You are unable to provide us with reasonable proof of purchase for the product;
- the breakdown occurs after the expiry of the express warranty period set out in section 1 or;
- The product was not purchased in Australia / New Zealand as a brand-new product.

### **Consumer Guarantees**

Our goods come with guarantees that cannot be excluded under the Australian / New Zealand Consumer Law. You are entitled to a replacement or refund for a major failure and for compensation for any other reasonably foreseeable loss or damage. You are also entitled to have the goods repaired or replaced if the goods fail to be of acceptable quality and the failure does not amount to a major failure.

### **How to Make a Claim**

You may make a claim under this warranty through our website, contacting our customer care line or via email. Contact details for Glen Dimplex Australia and New Zealand can be found at the end of this document. To make a valid claim under this warranty, you must:

- Lodge the claim with us as soon as possible and no later than 14 days after you first become aware of the breakdown;
- Provide us with the product serial number;
- Provide us with reasonable proof of purchase for the product. This can take the form of a store receipt, new home handover form or other payment receipt documentation; and
- If required by us, provide us (or any person nominated by us) with access to the premises at which the product is located at times nominated by us (so that we can inspect the product).

### **Warranty Claims**

If you make a valid claim under this warranty and none of the exclusions set out in Section 2 apply, we will, at our election, either repair the product or replace the product with a product of identical specification (or where the product is superseded or no longer in stock, with a product of as close a specification as possible). Goods presented for repair may be replaced by refurbished goods of the same type rather than being repaired.

Refurbished parts may be used to repair the goods. Products are designed and supplied for normal domestic use.

We will not be liable to you under this warranty for business loss or damage of any kind whatsoever. Glen Dimplex Australia Pty Ltd Glen Dimplex New Zealand Ltd

Ph: 1300 556 816

customer. [care.ha@glendimplex.com.au](mailto:care.ha@glendimplex.com.au)

[www.glendimplex.com.au](http://www.glendimplex.com.au)

Ph: 09 274 8265

[nztechserv@glendimplex.co.nz](mailto:nztechserv@glendimplex.co.nz)

[www.glendimplex.co.nz](http://www.glendimplex.co.nz)

### **READ THE INSTRUCTION BOOKLET BEFORE INSTALLING AND USING THE APPLIANCE.**

The manufacturer will not be responsible for any damage to property or to persons caused by incorrect installation or improper use of the appliance. The manufacturer is not responsible for any inaccuracies, due to printing or transcription errors, contained in this manual. In addition, the appearance of the figures reported is also purely indicative. The manufacturer reserves the right to make changes to its products when considered necessary and useful, without affecting the essential safety and operating characteristics. Glen Dimplex constantly seeks ways to improve the specifications and designs of their products. Whilst every effort is made to produce up to date literature, this document should not be regarded as an infallible guide. Actual product only should be used to derive cut out sizes.

All appliances must be installed by a qualified person(s) with adherence to the relevant electrical, plumbing and

building codes, with compliance being issued as required by state or national legislation. Additionally, all upright cookers must have the anti-tilt device installed correctly in adherence to the relevant standards by a licenced installer. For maximum effectiveness and efficiency all range hoods should be installed with the use of ductwork, by a licenced installer with adherence to the relevant state and national building codes and regulations. All Glen Dimplex appliances are for Domestic use only, and must be installed by a licenced installer into Domestic Applications only, without exception and to the required Authority's guidelines. Any installation outside of this will VOID warranty. Alfresco areas are not a Domestic application.

Distributed by Glen Dimplex Australia Pty Ltd Glen Dimplex New Zealand Ltd

Ph: 1300 556 816

Ph: 09 274 8265


[nztechserv@glendimplex.co.nz](mailto:nztechserv@glendimplex.co.nz)

For service advice, please contact the Customer Care Centre by phone or email above.

For full terms and conditions, or to register your product warranty, please visit our website:

[www.glendimplex.com.au](http://www.glendimplex.com.au) [www.glendimplex.co.nz](http://www.glendimplex.co.nz)

## Documents / Resources

	<p><a href="#">Technika TFL7W 7kg Front Load Washing Machine</a> [pdf] User Manual TFL7W, TFL7W 7kg Front Load Washing Machine, 7kg Front Load Washing Machine, Front Load Washing Machine, Washing Machine</p>
---	---

## References

- [Home | Technika](#)
- [Glen Dimplex New Zealand](#)
- [Glen Dimplex Australia](#)