



technicolor UIW4059MIL Set Top Box Receiving Digital Signals User Guide

[Home](#) » [Technicolor](#) » technicolor UIW4059MIL Set Top Box Receiving Digital Signals User Guide 

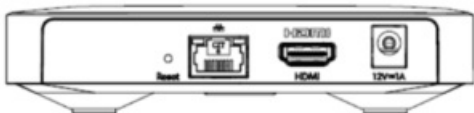
technicolor UIW4059MIL Set Top Box Receiving Digital Signals User Guide

Contents

- [1 Contents of the Gift Box](#)
- [2 How to start](#)
- [3 SAFETY INSTRUCTIONS AND REGULATORY NOTICES](#)
- [4 Connecting to the Television distribution](#)
- [5 To avoid the risk of electric shock](#)
- [6 Connecting to the mains supply](#)
- [7 Remote Control Unit](#)
- [8 Technical Specifications](#)
- [9 Buttons and Physical Connections](#)
- [10 Regulatory information North America – United States of America Federal Communications Commission \(FCC\) Compliancy statement](#)
- [11 FCC radio frequency interference statement](#)
- [12 RF exposure statement](#)
- [13 Documents / Resources](#)
- [14 Related Posts](#)

Contents of the Gift Box

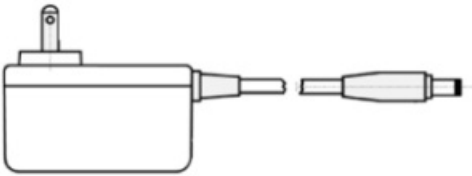
- Set Top Box



- Remote Control



- HDMI cable

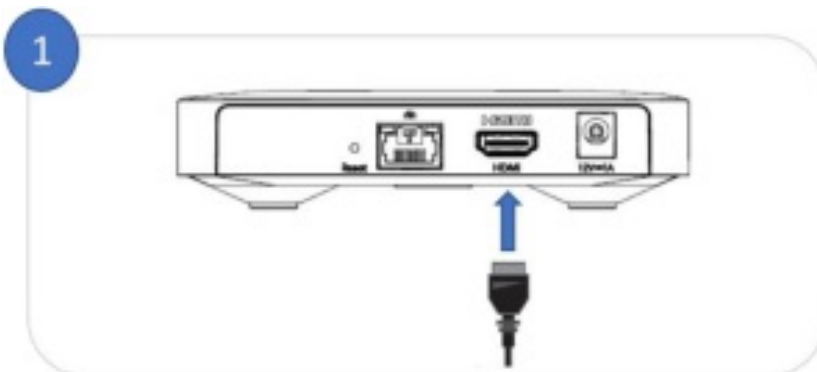


- Power Supply unit

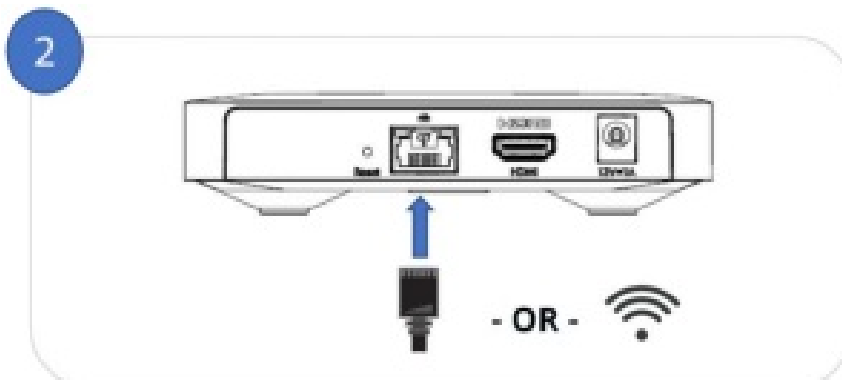


How to start

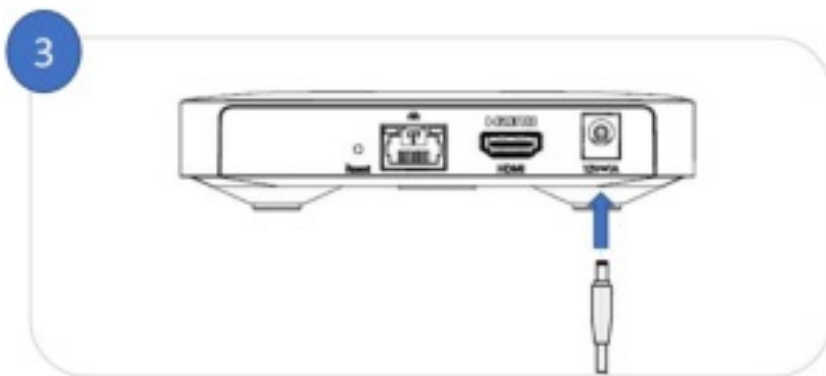
1. Connect UIW4059MILto your TV using the included HDMI cable.



2. Connect to internet using your own Ethernet cable from your router. Or connect to your WiFi network during on-screen setup.



3. Connect to powerand the light on the front of UIW4059MIL will turn On.



4. Get the remote readyby pulling the plastic tab to activate the batteries.



5. Complete your setupby following the screen instructions.



SAFETY INSTRUCTIONS AND REGULATORY NOTICES

BEFORE YOU START INSTALLATION OR USE OF THIS PRODUCT, CAREFULLY READ ALL SAFETY INSTRUCTIONS

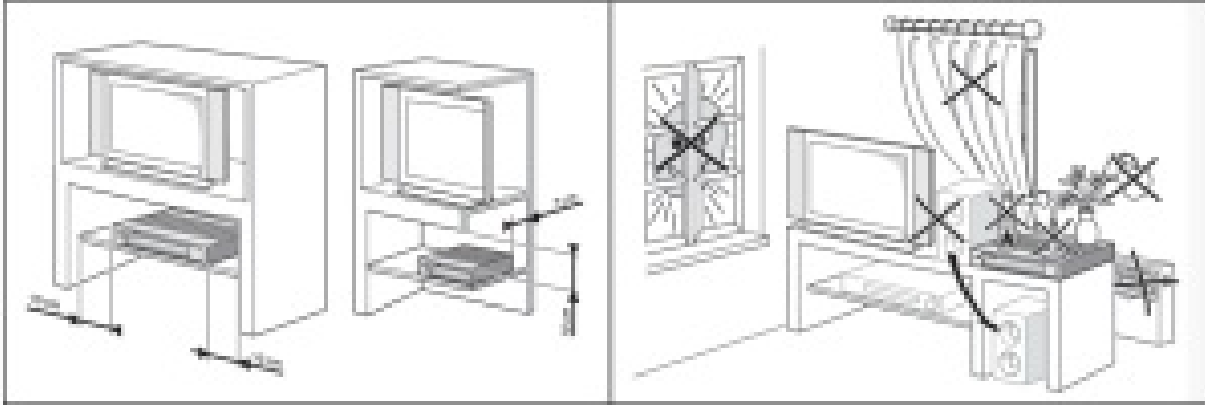
Notice to consumers

UIW4054MIL is an OTT/Pay-Tv Set-Top Box receiving digital signals from your service provider through Wi-Fi or Ethernet cable connection and delivers programs in Standard-Definition (SD), High-Definition (HD) video formats (up to 1080p/60) and Ultra-High-Definition (UHD) video formats (up to 2160/60p). You must have an UHDTV to display UHD programming. Programming must originate in UHD format and be broadcast in UHD format.

Using equipment safely

Your Equipment has been designed to meet international safety standards, but you must take care if you want it to perform properly and safely. It is important that you read this booklet completely. If you have any doubts about the

installation, operation, or safety of this Equipment, please contact your supplier.



Ensuring optimum performance

- Leave 7cm to 10cm around the decoder to ensure that proper ventilation gets to the decoder.
- Do not store your decoder on its side
- To clean the decoder, use a dry, clean soft cloth with no cleaning solvent or abrasive products. Clean the ventilation openings regularly.

Connecting to the Television distribution

Equipment connected to the protective earth of the building installation through the mains connection or through other equipment with a connection to protective earth and to a cable distribution system using coaxial cable, may in some circumstances create fire hazard.

Connection to a cable distribution system has therefore to be provided through a device providing electrical isolation below a certain frequency range (galvanic isolator, see EN 60728-11 or equivalent)."

To avoid the risk of electric shock

- Disconnect the decoder from the mains supply before you connect the decoder to (or disconnect it from) any other equipment.
Remember that contact with AC mains can be lethal or cause severe electric shock.
- Never remove the decoder's cover. Should the decoder fail, contact the Customer Service to arrange repair or service.
- Never allow anyone to push anything into holes, slots or any other opening in the case.
- Do not block the decoder's ventilation slots; never stand it on soft furnishings or carpets.
- Do not put anything on the decoder which might spill or drip into it (e.g. Lighted candles or containers of liquids). Do not expose the decoder to dripping or splashing. If an object or liquid enters inside the decoder, unplug it immediately and contact the Customer Service.
- Do not store the decoder in excessively hot, cold, or damp conditions. The decoder is intended to operate at an ambient temperature of less than 45 degrees Celsius and a maximum humidity level of 75%.
- In case of a storm, it is recommended that you unplug the decoder from the mains and from the other connected devices (TV set, antenna, SPDIF and Ethernet devices).
- Leave the mains socket accessible so that you can unplug the set quickly. The power supply unit serves as disconnect device. Be sure that the mains supply socket outlet you use is easily accessible and located as

close to the product as possible. The power connections to the product and the mains supply socket outlet socket must be accessible at all times, so that you always can disconnect the product quickly and safely from the mains supply.

Connecting to the mains supply

- This equipment is designed to operate at 100-240V AC, 50/60Hz.
- If you are in any doubt about the mains plug or connection, please consult the Customer Service.
- Only the power adapter supplied with the decoder must be used.

Remote Control Unit

Your remote control is specifically designed to be used with your decoder and it requires some specific batteries (See the chapter Technical Specifications). Insert batteries correctly. There may be a risk of explosion if the batteries are incorrectly inserted. Do not attempt to recharge disposable or non-reusable batteries.

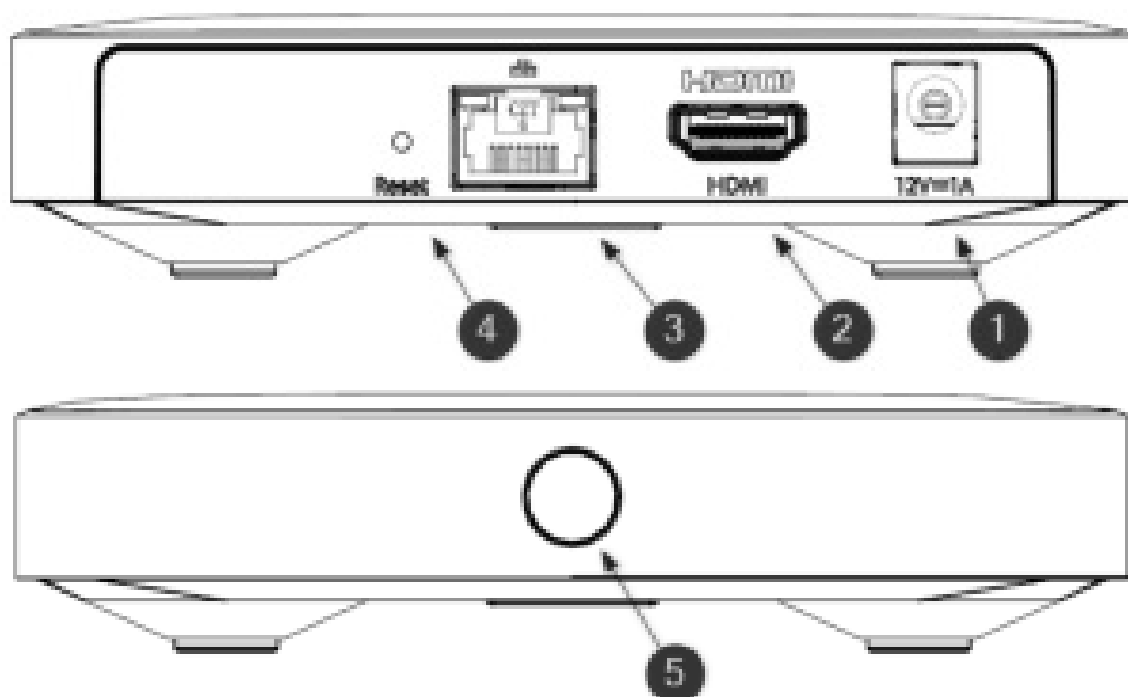
The batteries (battery pack or batteries installed) shall not be exposed to excessive heat such as sunshine, fire or the like. The batteries use some hazardous substances which are very polluting for the environment. Do not throw them out. Remember to dump them in collection points.

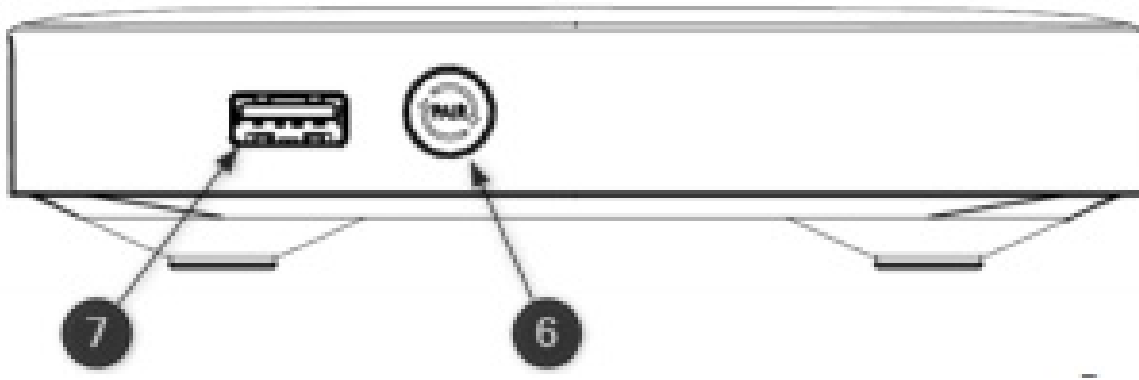
Technical Specifications

Operating Voltage	100-240 VAC ~ 50/60 Hz
Typical Power Consumption	< 12W MAX
Active standby Power Consumption	< 2W
Deep standby Power Consumption	<0,5W
Weight	260g
Dimension (Bigger diam x Top diam x H)	130 x 130 x 29.9mm
Operating Temperature Range	5°C to +45°C
Storage Temperature Range	-25°C to +55°C
Remote Control Battery Type	2 batteries AAA 1.5V
Conditional Access	NA
External Power Supply Output Voltage /Current	12V DC /1A
Set Top Box Input Voltage /Current	12V DC /1A

Buttons and Physical Connections

1	DC Jack	2 Pins female standard Jack plug 2.5mm-6.3mm 12V /1A
2	HDMI	HDMI OUT
3	Ethernet	RJ-45 /IEEE 802.3 – Unshielded
4	Reset Button	
5	Standby Button	
6	Pairing Button	
7	USB side	USB 2.0 (Type A)





Regulatory information North America – United States of America Federal Communications Commission (FCC) Compliancy statement



This device complies with Part 15 of the FCC Rules.

Operation is subject to the following two conditions:

1. this device may not cause harmful interference, and
2. this device must accept any interference received, including interference that may cause undesired operation.

Responsible Party – U.S. contact information

Technicolor Connected Home LLC, 5030 Sugarloaf Parkway, Building 6, Lawrenceville, GA 30044 USA, 317-587-5466.

FCC Caution:

Any changes or modifications not expressly approved by the party responsible for compliance could void the user's authority to operate this equipment.

FCC Part 15B Supplier's Declaration of Conformity

The FCC Part 15B Supplier's Declaration of Conformity (SDoC) for your product is available at the following internet address: www.technicolor.com/ch_regulatory

FCC radio frequency interference statement

This equipment has been tested and found to comply with the limits for a Class B digital device, pursuant to Part 15 of the FCC Rules.

These limits are designed to provide reasonable protection against harmful interference in a residential installation. This equipment generates, uses and can radiate radio frequency energy and, if not installed and used in accordance with the instructions, may cause harmful interference to radio communications. However, there is no guarantee that interference will not occur in a particular installation. If this equipment does cause harmful interference to radio or television reception, which can be determined by turning the equipment off and on, the user is encouraged to try to correct the interference by one or more of the following measures:

- Reorient or relocate the receiving antenna.
- Increase the separation between the equipment and receiver.
- Connect the equipment into an outlet on a circuit different from that to which the receiver is connected.
- Consult the dealer or an experienced radio/TV technician for help.

RF exposure statement

This equipment complies with FCC radiation exposure limits set forth for an uncontrolled environment. End users must follow the specific operating instructions for satisfying RF exposure compliance. To maintain compliance with FCC RF exposure compliance requirements, please follow operation instruction as documented in the product documentation.

When the product is equipped with a wireless interface, then it becomes a mobile or fixed mounted modular transmitter and must have a separation distance of at least 30 cm between the antenna and the body of the user or nearby persons. In practice, this means that the user or nearby persons must have a distance of at least 30 cm from the product and must not lean on the product in case it is wall mounted.

With a separation distance of 30 cm or more, the M(aximum) P(ermissible) E(xposure) limits are well above the potential this wireless interface is capable to produce.

This transmitter must not be co-located or operating in conjunction with any other antenna or transmitter.

Restricted frequency bands

In case this product is equipped with a wireless transceiver operating in the 2.4 GHz band, it can only use channels 1 to 11 (2412 to 2462 MHz) on U.S.A. territory.

In case this product is equipped with a wireless transceiver operating in the 5 GHz band, it meets all the other requirements specified in Part 15E, Section 15.407 of the FCC Rules.

The availability of some specific channels and/or operational frequency bands are country dependent and are firmware programmed at the factory to match the intended destination.

The firmware setting is not accessible by the end user.

Manufacturer: Technicolor Connected Home USA LLC 5030 Sugarloaf Parkway, Building 6 Lawrenceville, GA 30044



The terms HDMI and HDMI High Definition Multimedia Interface, and the HDMI logo are trademarks or registered trademarks of HDMI Licensing, LLC in the United States and other countries.



Manufactured under license from Dolby Laboratories. Dolby, Dolby Audio, Dolby Atmos and the double-D symbol are trademarks of Dolby Laboratories.

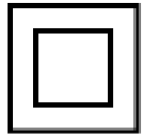
HEVC – Covered by one or more claims of the patents listed at patentlist.hevcadvance.com.



The Bluetooth® word mark and logos are registered trademarks owned by the Bluetooth SIG, Inc. and any use of such marks by Technicolor is under license.



For internal use only (IEC 60417-5957).



Double insulated Class II equipment (IEC 60417-5172).

It does not require an earth connection.



Alternative current



Direct current



Polarity



Energy Efficiency DoE Level VI

This product may contain certain open source software modules which are subject to Open Source Software license terms.

A list of the Open Source Software used or provided inside this product and their corresponding licenses and version number are available on TECHNICOLOR's extranet at the following address:
<http://www.technicolor.com/en/hi/minisites/open-software> or at another address as Technicolor may provide from time to time.

If and where applicable, depending on the terms of the applicable Open Source Software licenses, the source codes of the

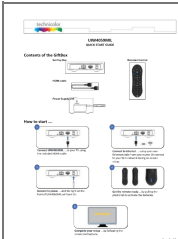
Open Source Software are available for free on TECHNICOLOR's website at the following address:
<http://www.technicolor.com/en/hi/minisites/open-software>

For avoidance of doubt, Open Source Software is only licensed by the original owner of the Open Source Software under the terms set forth in the designated Open Source License.

IPN#6301041C



Documents / Resources



[technicolor UIW4059MIL Set Top Box Receiving Digital Signals](#) [pdf] User Guide
UIW4059, G95UIW4059, UIW4059MIL, Set Top Box Receiving Digital Signals