



## TC4400 Cable Modem



# technicolor TC4400 Cable Modem User Manual

[Home](#) » [Technicolor](#) » technicolor TC4400 Cable Modem User Manual 

### Contents

- 1 [technicolor TC4400 Cable Modem User Manual](#)
- 2 [Before you start](#)
- 3 [Check the content of your package](#)
- 4 [Power on your TC4400](#)
- 5 [Troubleshooting](#)
- 6 [How to restart or reset your TC4400](#)
- 7 [References](#)



**technicolor TC4400 Cable Modem User Manual**

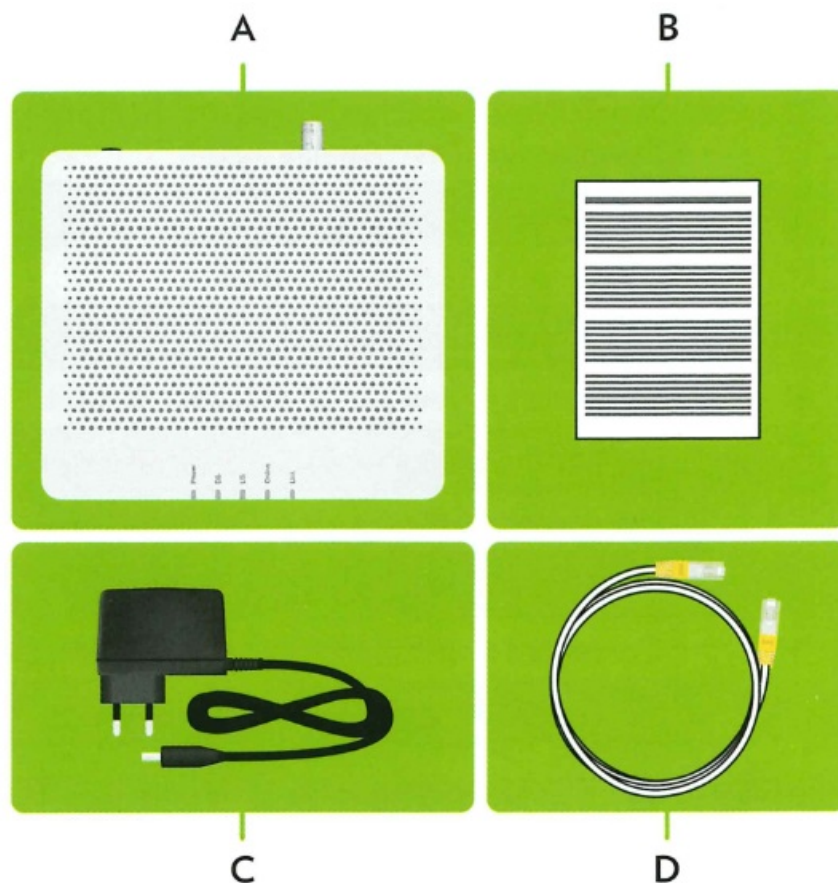


## Before you start

Carefully read the Safety Instructions and Regulatory Notices document included in your package before continuing with the installation of your TC4400.

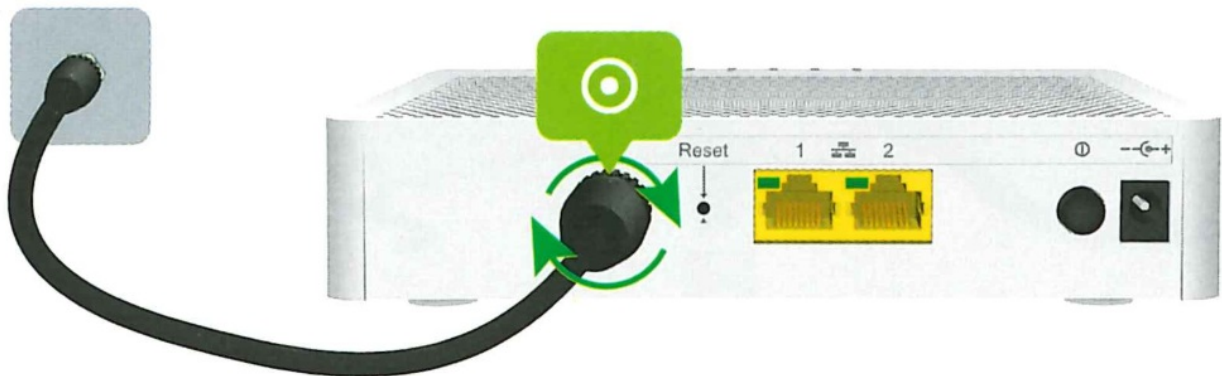
## Check the content of your package


Your package contains the following items (besides this Quick Installation Guide):



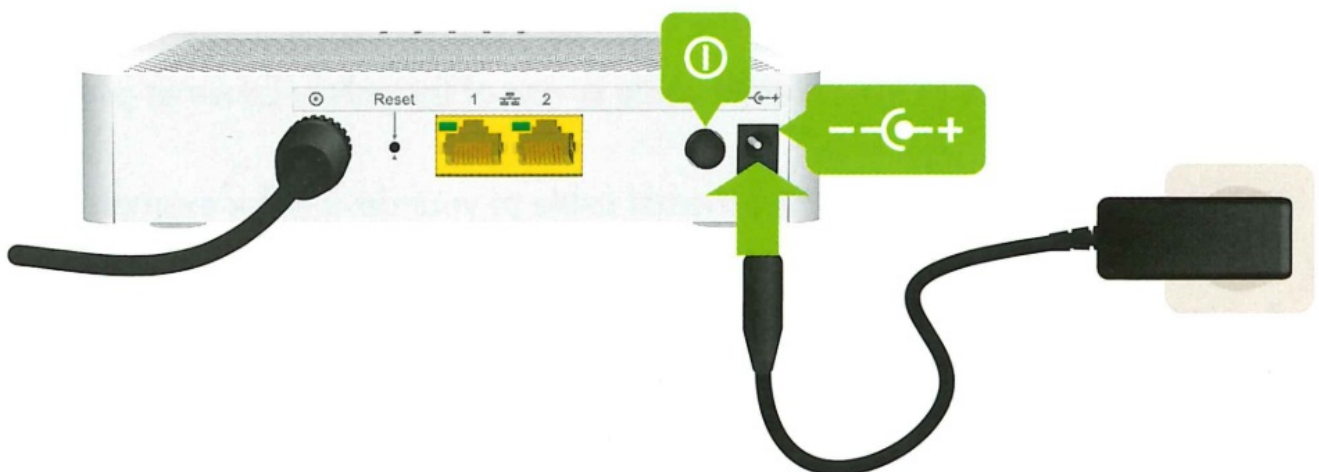
Item	Description
A	One TC4400.
B	One Safety Instructions and Regulatory Information booklet.
C	One power adapter.
D	One Ethernet cable with yellow connectors (optional).




### Connect your TC4400 to your service provider's network



1. Take a coaxial cable.
2. Connect one end to a cable outlet or a splitter connected to a cable outlet.
3. Connect the other end to the cable port (  ) of your TC4400.

### Power on your TC4400



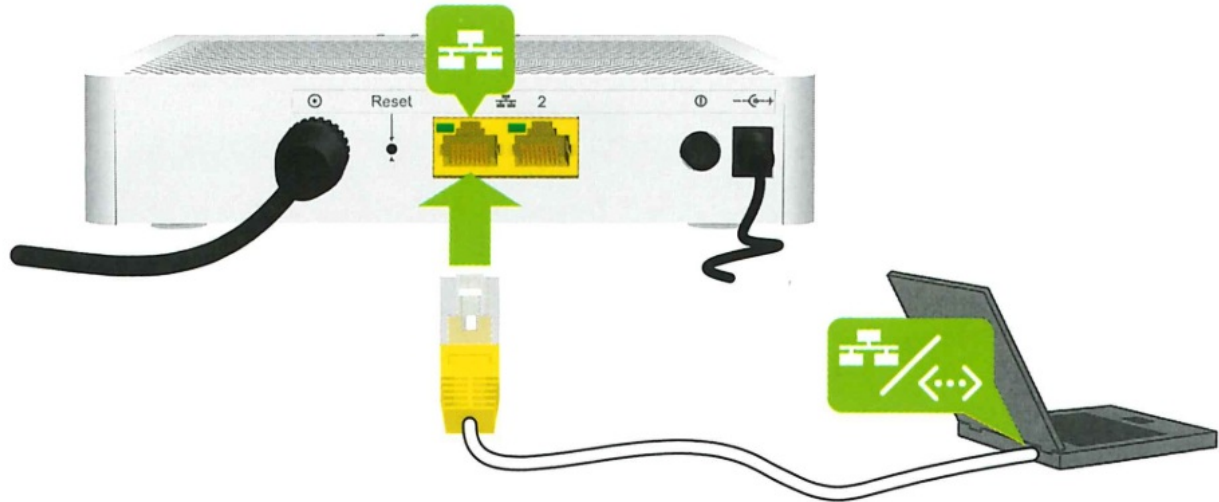
1. Plug the connector of the electric power supply adapter into the C4400 power inlet port (  ).
2. Plug the adapter into a nearby power outlet.
3. If your TC4400:
  - Is equipped with a power button (  ) then press the power button to power on your TC4400.
  - Is not equipped with a power button (  ) then your TC4400 is already powered on.
4. After a few minutes, the Online LED must be solid green. If the DS and US LEDs are blinking at the same time,

your TC4400 is updating its software.

5. If this is the case, wait until the upgrade has been completed. This can take several minutes! Do not power off your TC4400 or unplug any cables!

### Connect your Ethernet device to your TC4400

If you want to connect a device using a wired (Ethernet) connection:



1. Take an Ethernet cable. If an Ethernet cable has been included in your package, we strongly recommend you use the included Ethernet cable.
2. Connect one end of the Ethernet cable to one of the yellow Ethernet ports of your TC4400.
3. Connect the other end of the Ethernet cable to your device (for example, a computer, a router, etc.)
4. Your Ethernet device is now connected to the Internet. If needed, connect a second Ethernet device to your TC4400 using the same procedure.
5. The connected Ethernet devices are now directly connected to the Internet. If you want to set up a local network, you have to put a router between your TC4400 and your Ethernet devices.

## Troubleshooting

### LED overview

On your TC4400, you can find several LEDs that allow you to check the state of the services offered by your TC4400. If the DS and US LEDs are blinking at the same time, your TC4400 is updating its software. If this is the case, wait until the upgrade has been completed. This can take several minutes! Do not power off your TC4400 or unplug any cables!



LED	State	Description
Power	On	TC4400 powered on.
	Off	TC4400 powered off.
DS	On	DownStream (DS) channels locked.
	Blinking	Locking downstream channels.
US	On	UpStream (US) channels locked.
	Blinking	Locking upstream channels.
Online	On	Connected to your service provider's network.
	Blinking	Connecting to your service provider's network.
	Off	Not connected to your service provider's network.
Link	On	Connected to an Ethernet device.
	Blinking	Connected to an Ethernet device and sending/receiving data..
	Off	Not connected to an Ethernet device.

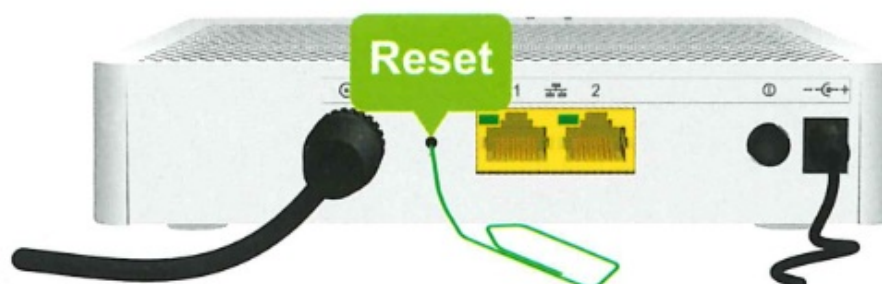
## How to restart or reset your TC4400

### Proceed as follows

1. Make sure that your TC4400 is turned on.

### If you want to

- Restart your TC4400, and use a pen or an unfolded paperclip to briefly (maximum two seconds) Press the recessed Reset button on the back panel of your TC4400.
- Reset the factory default settings of your TC4400, and use a pen or an unfolded paperclip to push the recessed Reset button on the back panel of your TC4400 for at least 10 seconds and then release it.
- Your TC4400 restarts.



### TECHNICOLOR

1-5 rue Jeanne d'Arc  
92130 Issy-les-Moulineaux

### France

[www.technicolor.com](http://www.technicolor.com)

Copyright 2016 Technicolor. All rights reserved. DMS3-QIG-25-182 v2.0. All tradenames referenced are service

marks, trademarks, or registered trademarks of their respective companies. Specifications are subject to change without notice.

**Download PDF:** [technicolor TC4400 Cable Modem User Manual](#)

## References

- [User Manual](#)

[Manuals+](#), [Privacy Policy](#)

This website is an independent publication and is neither affiliated with nor endorsed by any of the trademark owners. The "Bluetooth®" word mark and logos are registered trademarks owned by Bluetooth SIG, Inc. The "Wi-Fi®" word mark and logos are registered trademarks owned by the Wi-Fi Alliance. Any use of these marks on this website does not imply any affiliation with or endorsement.