

TECHNI[®]
HOME
RTA-04FLT
Folding Table



TECHNI HOME RTA-04FLT Folding Table Owner's Manual

[Home](#) » [TECHNI HOME](#) » [TECHNI HOME RTA-04FLT Folding Table Owner's Manual](#) 

Contents

- [1 TECHNI HOME RTA-04FLT Folding Table](#)
- [2 Specifications](#)
- [3 INSTRUCTIONS FOR SETTING](#)
- [4 DIMENSIONS AND WEIGHT](#)
- [5 STORAGE](#)
- [6 CARE AND MAINTENANCE](#)
- [7 MORE INFORMATION](#)
- [8 Frequently Asked Questions](#)
- [9 Documents / Resources](#)
 - [9.1 References](#)



TECHNI HOME RTA-04FLT Folding Table



Specifications

- 4 FT FOLDING TABLE
- **MODEL:** RTA-04FLT 6 FT FOLDING TABLE
- **MODEL:** RTA-06FLT
- **Weight Capacities:**
 - **RTA-04FLT:** 330 lbs (150 KG)
 - **RTA-06FLT:** 330 lbs (150 KG)
- **Dimensions:**
 - **RTA-04FLT:** 48" x 24.2" x 29.1"
 - **RTA-06FLT:** 70.8" x 29.1" x 29.1"

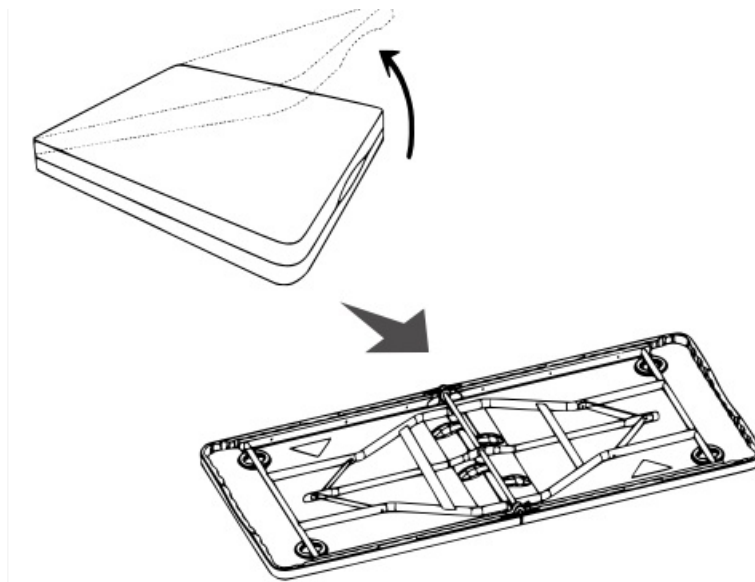
Thank you for purchasing our product

SEE THE OTHER SIDE FOR DIMENSIONS, WARNINGS, AND CARE

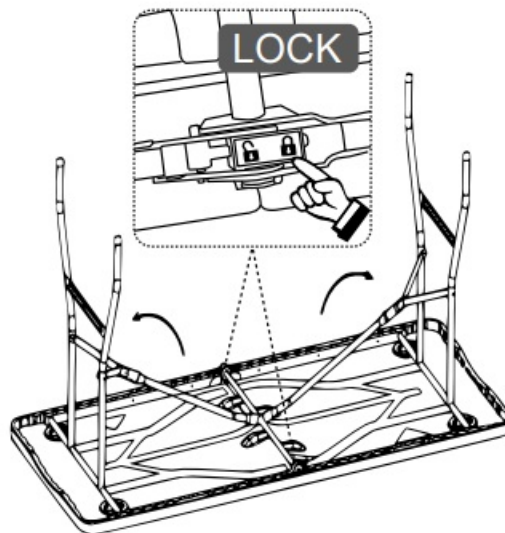
INSTRUCTIONS FOR SETTING

INSTRUCTIONS FOR SETTING UP AND FOLDING THE TABLE:

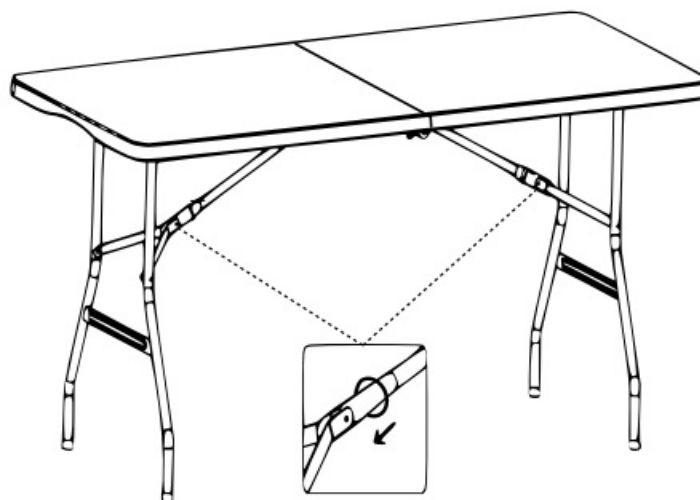
1. Open and unfold completely.



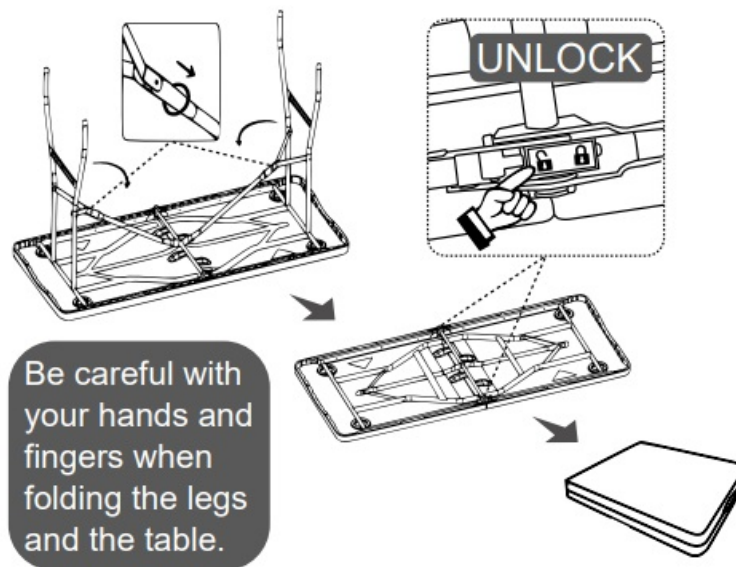
2. FIRST press the switch in the middle to LOCK, THEN unfold the legs one at a time making sure the Y-shaped supports are fully stretched.



3. Flip the table upright and move the rings to the center of the Y-shaped supports to secure the legs.



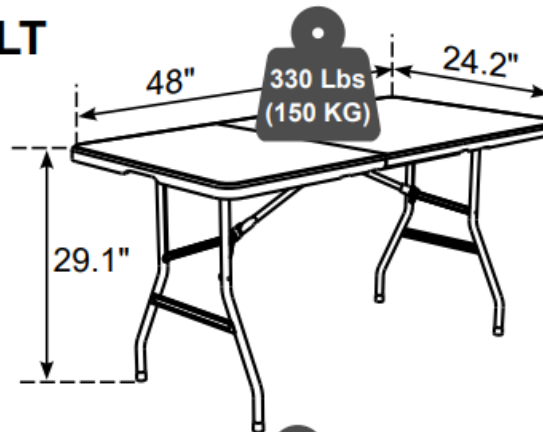
To store the table, FIRST flip it upside-down, THEN move the rings away from the center of the Y-shaped supports and fold the legs. LASTLY, press the switch to UNLOCK and fold the table ready for storage.



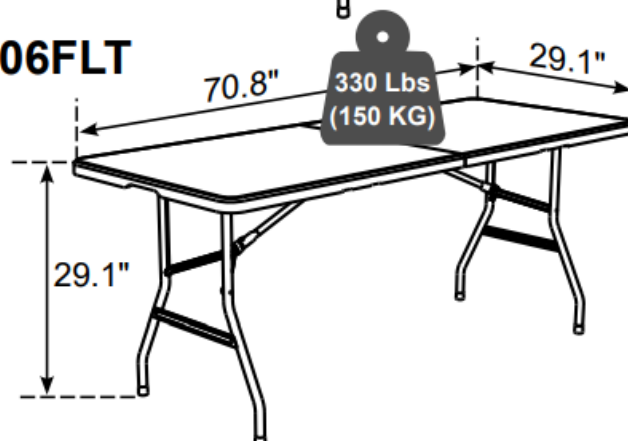
DIMENSIONS AND WEIGHT

DIMENSIONS AND WEIGHT CAPACITIES:

RTA-04FLT

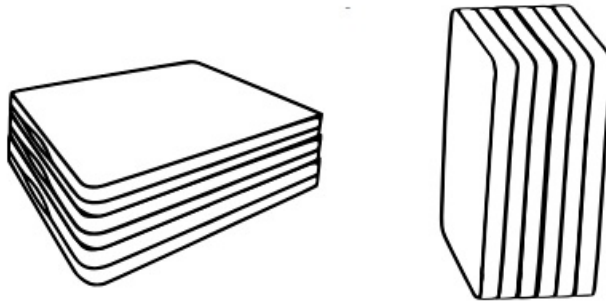


RTA-06FLT



STORAGE

- Please see the other side for instructions on folding the table.
- Fold the table and store it in a dry place.
- If you own several of these same tables, do not overstack and secure them appropriately.
- DO NOT OVERSTACK
- SECURE APPROPRIATELY.



WARNINGS

- Do not exceed the indicated weight limit.
- Be careful when folding down the legs or the table to avoid hand injuries.
- Do not leave objects hanging over the edge of the table.
- If you have to move the table while objects are still on it, remove or secure those that could tip over or fall off.
- Do not use it if the product appears to be damaged or defective.
- The manufacturer does not assume liability for consequences due to accidents, overloading, negligence, improper use, or modifications.

CARE AND MAINTENANCE

- Do not expose the product to extreme environmental conditions.
- Please note that the product is prone to discoloration and other forms of regular wear and tear from continued use as well as exposure to the elements and direct sunlight.
- To clean the table it is recommended to use a soft cloth lightly damped in a solution of smooth soap and water, then dry with a clean towel.
- Do not use solvents or abrasive materials.
- Before using a cleaning agent, test on a small hidden area, like underneath.
- Inspect the product periodically for loose screws, broken/detached rivets, broken welding, and any other defects that might become a safety risk.

MORE INFORMATION

- For customer service please email us: support@rtaproducts.com
- For warranty information please visit our website: www.technihome.com

Frequently Asked Questions

- **Q: What is the weight capacity of the RTA-04FLT and RTA-06FLT folding tables?**
 - A: The weight capacity for both models is 330 lbs (150 KG).
- **Q: How should I store the folding table to ensure its longevity?**
 - A: Avoid overstacking the table and make sure to secure it appropriately when storing.

Documents / Resources



[TECHNI HOME RTA-04FLT Folding Table](#) [pdf] Owner's Manual
RTA-04FLT, RTA-06FLT, RTA-04FLT Folding Table, RTA-04FLT, Folding Table

References

- [🌐 Techni Home](#)
- [User Manual](#)

Manuals+. [Privacy Policy](#)

This website is an independent publication and is neither affiliated with nor endorsed by any of the trademark owners. The "Bluetooth®" word mark and logos are registered trademarks owned by Bluetooth SIG, Inc. The "Wi-Fi®" word mark and logos are registered trademarks owned by the Wi-Fi Alliance. Any use of these marks on this website does not imply any affiliation with or endorsement.