



Techni Glass The Grinder CUSTOMIZABLE GRINDER WITH COLOSSAL POWER Instruction Manual

[Home](#) » [Techni Glass](#) » Techni Glass The Grinder CUSTOMIZABLE GRINDER WITH COLOSSAL POWER Instruction Manual 

TECHNI-GLASS

The Grinder CUSTOMIZABLE GRINDER WITH COLOSSAL POWER
Instruction Manual
STATE-OF-THE-ART BREAKTHROUGH TECHNOLOGY



Dear Artist,

Congratulations on owning the first comprehensive glass grinder with worldwide voltage capabilities!

THE GRINDER® and THE GRINDER® 2's features and accessories have been compiled after a thorough study of glass artists' needs. Thank you for purchasing the ultimate glass grinding machine which we hope will make your studio time the most pleasant experience.

Please take a few moments to read this manual and become acquainted with your GRINDER, to get the best performance from your machine. If you have any questions, please feel free to visit our website, www.techniglass.com for more information.

Be sure to register your GRINDER to activate its warranty with the option to gain access to Techniglass

Corporation company updates, promotions, and news! Go to techniglass.com and tell us about your new GRINDER experience – any comments and feedback you may have – we would love to hear from you!

On behalf of our entire team, thank you for choosing Techniglass for all your glass grinding needs. Our designers and engineers are dedicated to creating the most advanced and innovative products, we are inspired by the ingenuity of all glass artists.

Here's to the instruments that help make inspiration a reality.

Cheers,

Mike Hacikyan

Mike Hacikyan








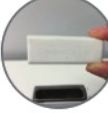
President | Techniglass Corporation

P.S. Find your serial number on the back of your machine.

For quick reference and convenience write the number here: _____

If you experience any issues, don't hesitate to call us at 716.564.8888 or contact us at info@techniglass.com so our team can assist you.

SAFETY PRECAUTIONS

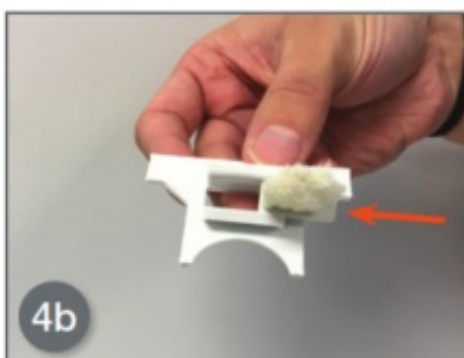
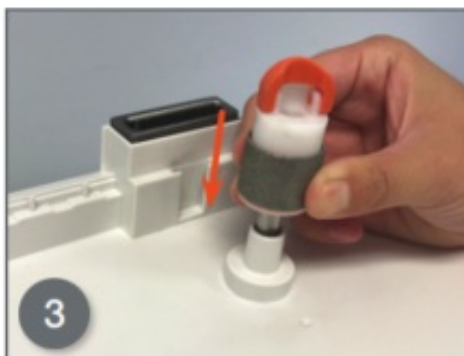
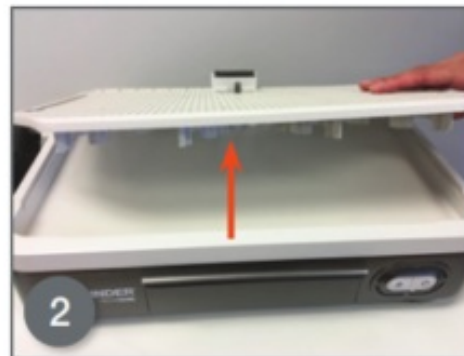
	<ul style="list-style-type: none">• Always use eye protection while operating this glass grinder
	<ul style="list-style-type: none">• Use only a properly grounded, three-prong outlet
	<ul style="list-style-type: none">• Water from the reservoir must not reach an electrical outlet
	<ul style="list-style-type: none">• Power off THE GRINDER® and THE GRINDER2® when not in use
	<ul style="list-style-type: none">• Before grinding, ensure the water in the reservoir is adequately filled
	<ul style="list-style-type: none">• Do not overfill the water reservoir
	<ul style="list-style-type: none">• Always install the orange shaft water seal on the shaft when using the upper platform
	<ul style="list-style-type: none">• When removing THE LUMISHIELD® Arm, always cover the slot with THE LUMISHIELD Mount Cap

NO FOOT PEDAL NEEDED	<ul style="list-style-type: none">• Minimal noise• Does not overheat• Uses 24X less electricity
-----------------------------	---

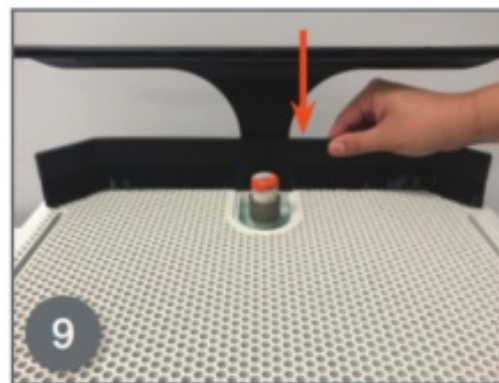
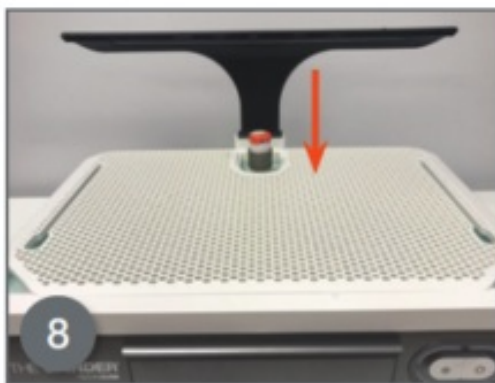
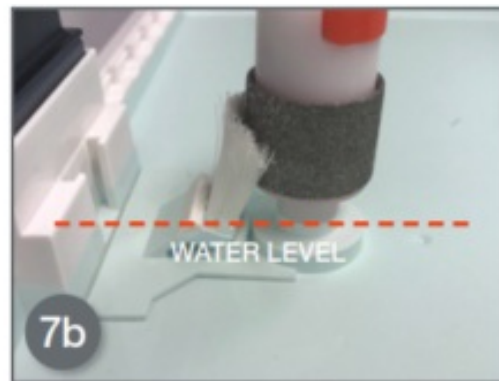
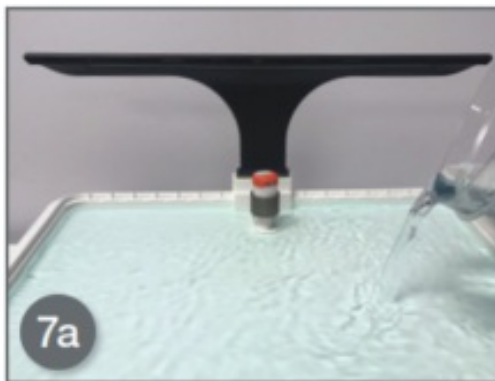
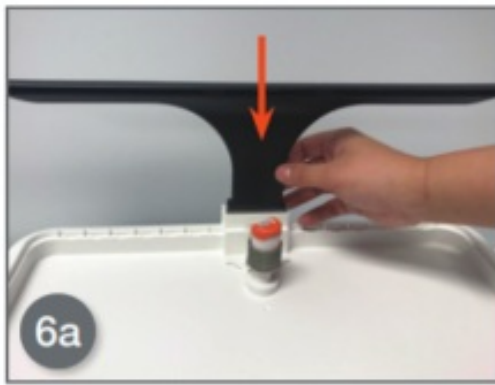
Contents

- 1 ASSEMBLY FOR THE GRINDER®
- 2 MAINTENANCE
- 3 SERIAL NUMBER WARRANTY REGISTRATION
- 4 Documents / Resources
 - 4.1 References
- 5 Related Posts

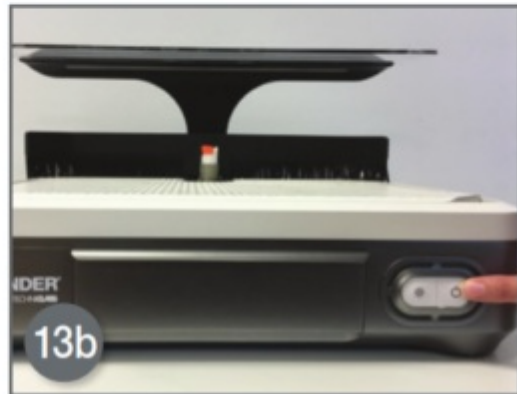
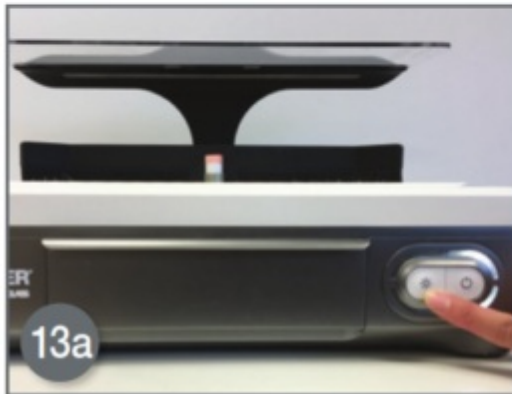
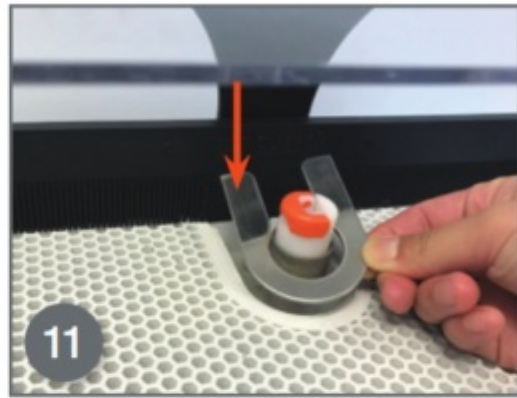
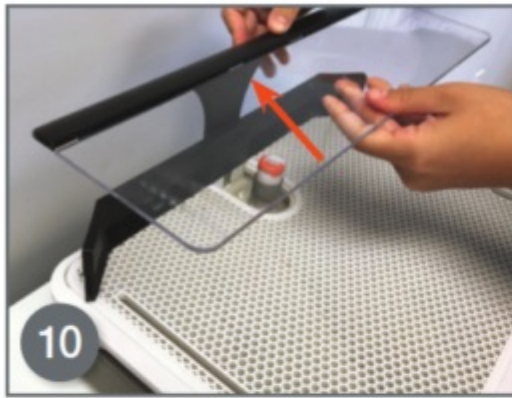
ASSEMBLY FOR THE GRINDER®



1. Insert the power cord into the inlet
2. Remove the Lift Grid
3. Slide Quick-Fit Bit ® down the shaft and lock it into place
- 4a-c. Install Aqua Flow System ® and wet the brush bristles

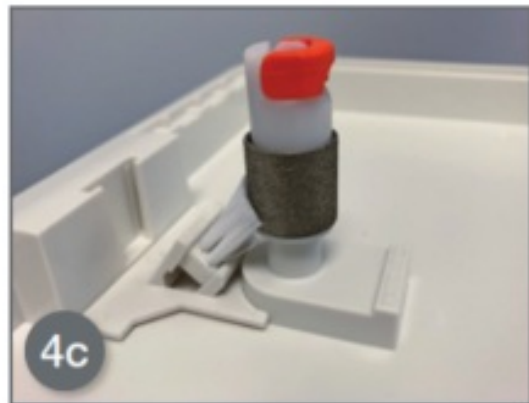
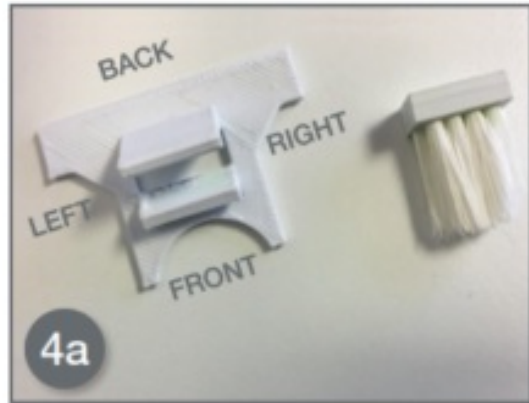
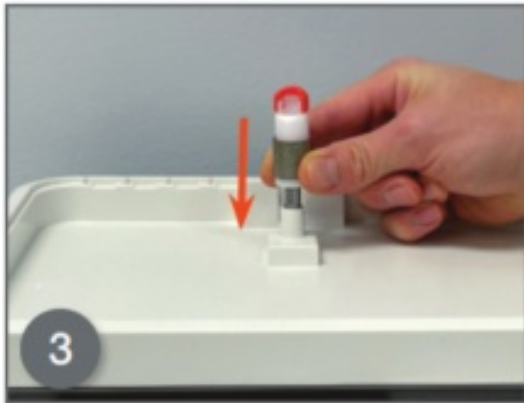


- 6 a-b. Place THE LUMISHIELD ® or LUMISHIELD Mount Cap into the slot
- 7 a-b. Add water until it reaches the base of the Aqua Flow System ® brush
- 8. Position Lift Grid
- 9. Install the THE GUARD into the slot

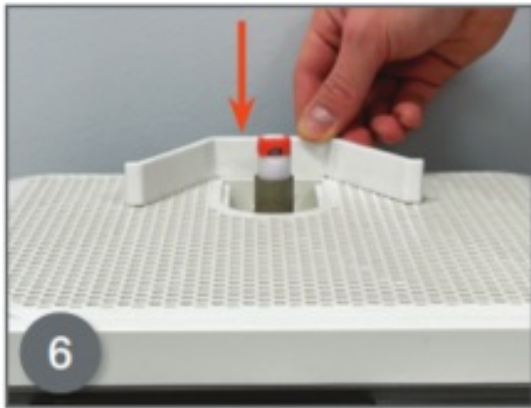
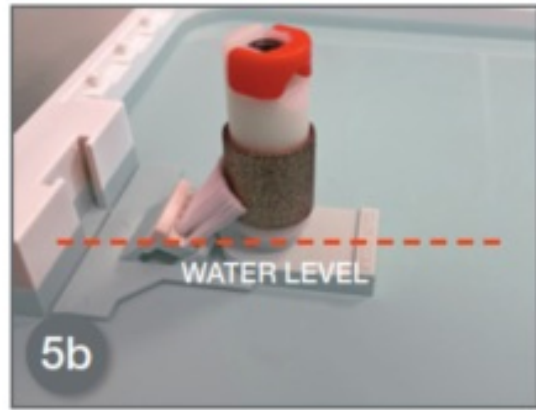
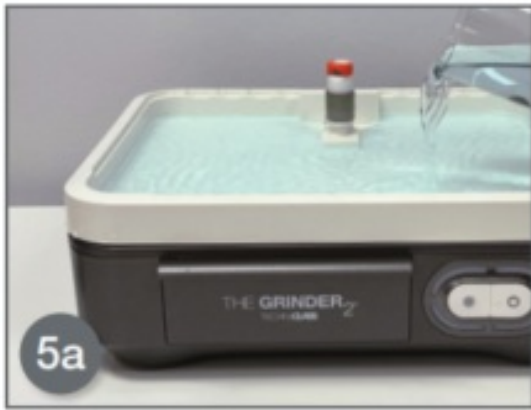


- 10. Slide transparent lens into the channel
- 11. Insert Everwear Bit Guard
- 12. Plug power cord into the grounded 3-prong socket
- 13. a-b Press Light /Power Switch

ASSEMBLY FOR THE GRINDER® 2



1. Insert the power cord into the inlet
2. Remove the Lift Grid
3. Slide Quick-Fit Bit ® down the shaft and lock it into place
- 4a-c. Install Aqua Flow System ® and wet the brush bristles

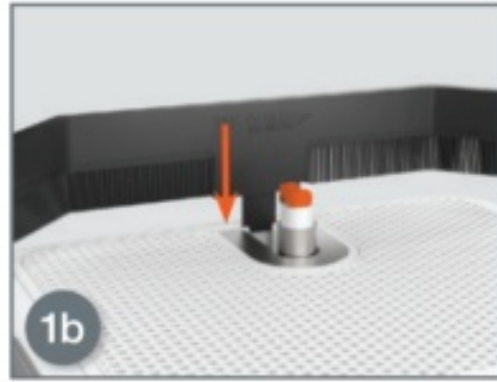
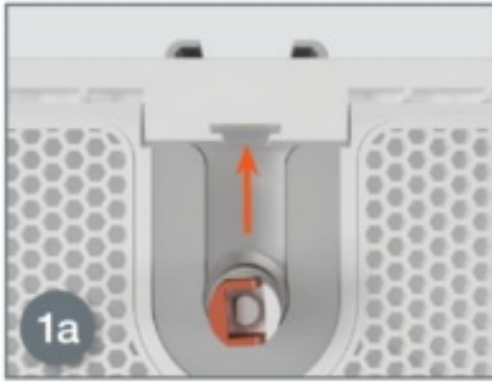


- 5 a-b. Add water until it reaches the water level mark in the reservoir or base of the Aqua Flow System ® brush
6. Position The Lift Grid, and install The Guard into the slot
7. Insert Everwear Bit Guard
8. Press Power Button on the front to operate

ASSEMBLY FOR THE GRINDER®2
OPTIONAL ACCESSORY – THE LUMISHIELD®2



1. Insert THE LUMISHIELD2 into the slot
2. Connect the cable to the port on the back of **THE GRINDER2**
3. Slide transparent lens into the channel, securing in-place
4. Press Light Button on the front to operate

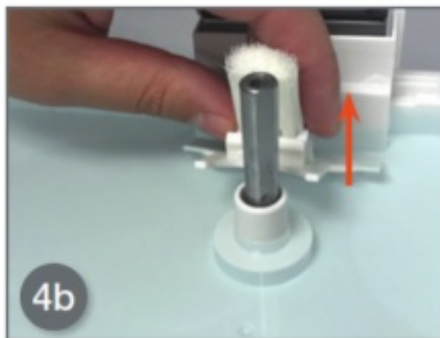
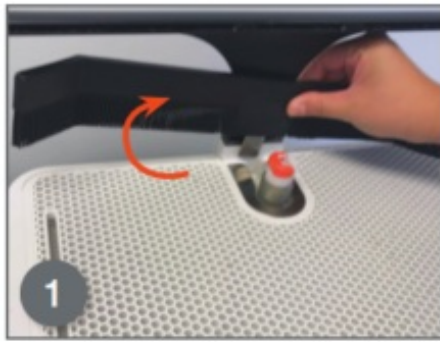


1 a-b Insert THE GUARD₂ into slot



The LUMISHIELD ®2 and THE GUARD®2 are sold separately, allowing **THE GRINDER®2** to be completely customizable.

PREPARING THE GRINDER ® AND THE GRINDER ®2 FOR THE MINI G ® PLATFORM



1. Remove THE GUARD ® /THE GUARD ®2

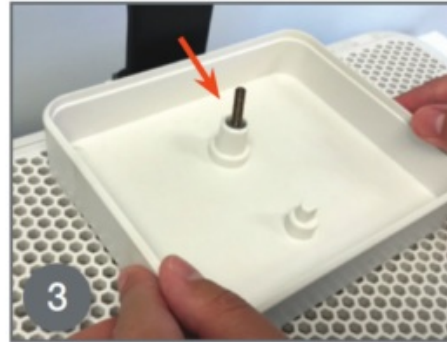
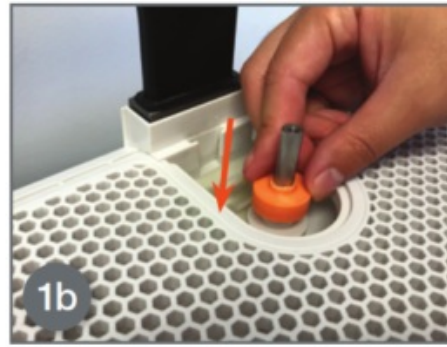
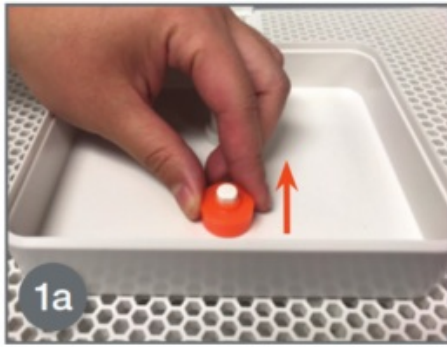
2. Remove Quick-Fit ® Bit

3. Remove Everwear ® Bit Guard

4 a-b. Remove the Aqua Flow System ®

5. Remove Water from the basin

THE MINI G ® PLATFORM ASSEMBLY FOR THE GRINDER ® AND THE GRINDER®2

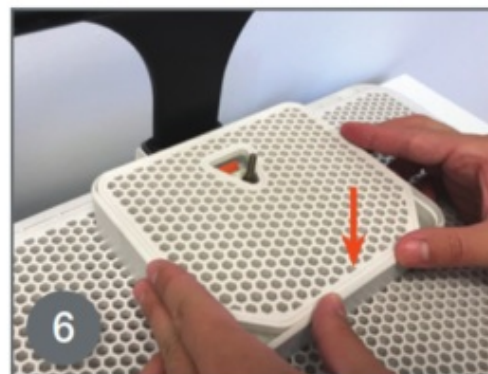
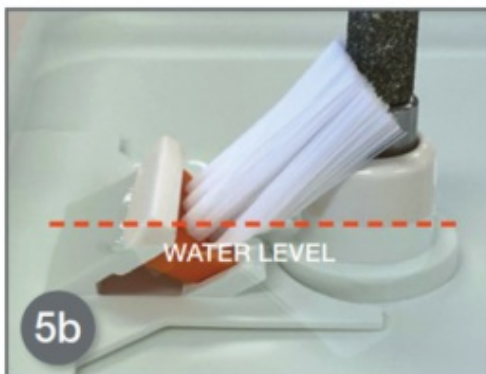
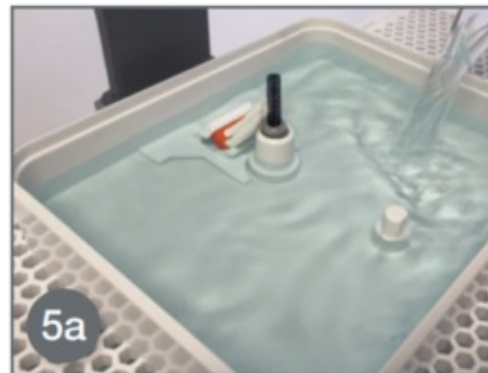


1a-b. Remove Shaft Water Seal included with THE MINI G and MINI G ® Bit System and slide down the shaft of the Grinder

2. Screw 1/4" or 1/8" jewelry bit onto the shaft

3. Align and install THE MINI G over the shaft

*MINI G Bit System sold separately. Please contact your favorite retailer for purchase information.



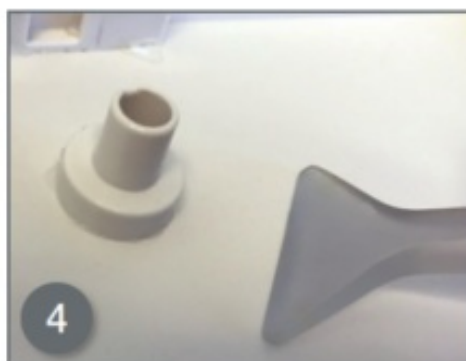
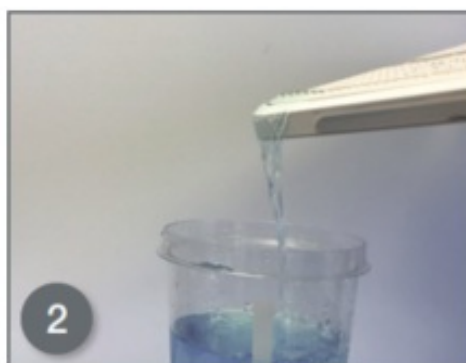
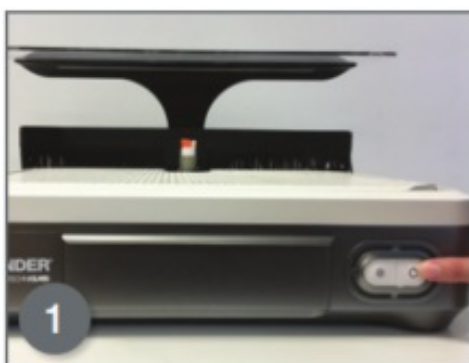
4. Install Aqua Flow System ® with an orange base brush, wet the brush bristles, and slide it into the holder

5a-b. Add water until it reaches the base of the Aqua Flow System brush

6. Position Grid over THE MINI G and press into place

Included with THE MINI G is an orange base brush insert for the Aqua Flow System. This orange brush should ONLY be used for THE MINI G upper platform. Use of the orange brush on the LOWER platform will result in a void of warranty.

MAINTENANCE



1. Power OFF THE GRINDER® or THE GRINDER® 2
2. Drain water from the reservoir
- 3 If using THE GRINDER, install a brush on the scraper
4. Clean (scrape) excess debris from the reservoir surface
5. Clean the surface with soap and water to remove additional debris
6. Clean eye shield with a soft cloth

SERIAL NUMBER WARRANTY REGISTRATION

Be sure to register **THE GRINDER®** or **THE GRINDER® 2** serial number with Techniglass Corporation within 90 days of purchase to ensure warranty validity.

Visit www.techniglass.com/grinder/registration/ to register your Grinder.

Registering your purchase links your product to your account for proof of ownership, warranty service, and recall notifications.

If you wish to receive information on products, promotions, and contests make sure you join our mailing list!

THE GRINDER®
THE GRINDER® 2



GR.M1.0121.R2

TECHNI-GLASS

Techniglass Corporation
80 Thompson Street
N. Tonawanda, NY 14120 USA
Phone: 716.564.8888
www.techniglass.com

Documents / Resources



[Techni Glass The Grinder CUSTOMIZABLE GRINDER WITH COLOSSAL POWER](#) [pdf] Instruction Manual

The Grinder CUSTOMIZABLE GRINDER WITH COLOSSAL POWER, CUSTOMIZABLE GRINDER WITH COLOSSAL POWER, COLOSSAL POWER

References

- [Techniglass :: Products for the Art Glass Industry :: Tonawanda, NY](#)
- [Registration - Techniglass](#)