



TECHMADE TM-STARK SN70 Stark Extreme Smartwatch User Manual

[Home](#) » [TECHMADE](#) » TECHMADE TM-STARK SN70 Stark Extreme Smartwatch User Manual 



User Manual

READ CAREFULLY AND KEEP

TECHMADE SRL

Product Code/Ref: TM-STARK EC SN70

Description: Smartwatch Trademark: Techmade Srl

All the essential test series have been carried out and the aforementioned product complies with all the legal requirements.

This device complies with the requirements essential provisions and other relevant provisions of the RED 2014/53/EU Directive. All essential radio test series have been performed.

Limits in the intended use or foreseeable misuse

1. Do not disassemble the device. If a repair is necessary, contact a Techmade sales center or service center
2. It is recommended to keep away from electrical equipment.
3. Do not subject the appliance to shocks, knocks or vibrations.
4. Keep away from heat sources such as radiators or kitchens.

5. Do not hold the device with wet hands while it is charging. This could cause electric shock or seriously damage the appliance.
6. In the event of immersion in saltwater, immediately rinse with fresh water to avoid any damage. Therefore we do not recommend immersing the device in saltwater when possible to avoid damage to the metal components (case, buckle, etc.) due to the corrosive agents contained in it.
7. If the device falls or is bumped, water protection may be damaged.
8. Do not charge the device near flammable materials, which could catch fire due to the developed heat.
9. Take care of the battery charging socket / The battery can be recharged hundreds of times before it needs to be replaced.
10. Techmade is not responsible for performance problems caused by applications from suppliers other than Techmade.
11. Do not modify the product in any way. Techmade is not responsible for performance or incompatibility problems caused by changes to registry settings or operating systems. Attempting to customize the operating system may cause the product or application to malfunction.
12. This product is not a toy. Keep it out of reach of children and pets. Product composed of small parts. Swallowing may cause choking.

Identification of the characteristics of the personnel who will use the machine (physical, competence) and level of training required for users

No special training for use. Read the instruction booklet.

Product warranty

24 months warranty for final consumer and 12 months for the professional operator. Opening or attempting to open the product will void the warranty and could constitute a safety hazard.

Safety-related

RF output: 0 dBm

Handle the device gently. Protect the device from bumps and falls.

Environmental (temperature, humidity) Working temperature: -10 ° C — 50 ° C / 14 ° F A. , 122 ° F

Humidity: 0 " 100%

Cleaning level

Use a soft, dry cloth. Do not use alcohol or other cleaning solutions

Battery recharge

Use only the cable to charge the battery. Do not attempt to clean the unit with chemical solvents, as this may damage the finish. Rub with a clean, dry or slightly damp cloth.

Waterproof

The device is a water-resistant device, which means that it is rain-proof and splash-proof and can even withstand the most daring training. If a device has a degree of resistance IP68 it means that: IP6X – Dust Resistant.

It is completely protected from dust ingress. IPX8 – Protection from Water: Immersion in freshwater up to 1.5 / 2 meters deep is possible. It is sealed and resistant to the entry of freshwater for a limited period (max 30 minutes) of immersion. Since in the IP68 specification the characteristics may vary, it is good to make sure of what is indicated by each manufacturer.

Drying

Do not attempt to dry the product using a microwave oven, traditional oven or hairdryer. Use a dry cloth or mild detergent.

WEEE Instructions



The European directive 2012/19/EU on waste electrical equipment and electronic (WEEE) requires that these devices do not have to be disposed of in the normal flow of municipal solid waste, but collected separately to optimize the flow of recovery and recycling of the materials that compose it and prevent potential damage to health and the environment due to the presence of potentially dangerous substances. The symbol of the crossed-out bin is shown on all the products to remember it. The waste can be delivered to the appropriate collection centers, or it can be delivered free of charge to the distributor when purchasing a new equivalent or non-compulsory purchase of equipment smaller than 25cm. For further information on the correct disposal of these devices, please contact the appropriate public service.

Contents

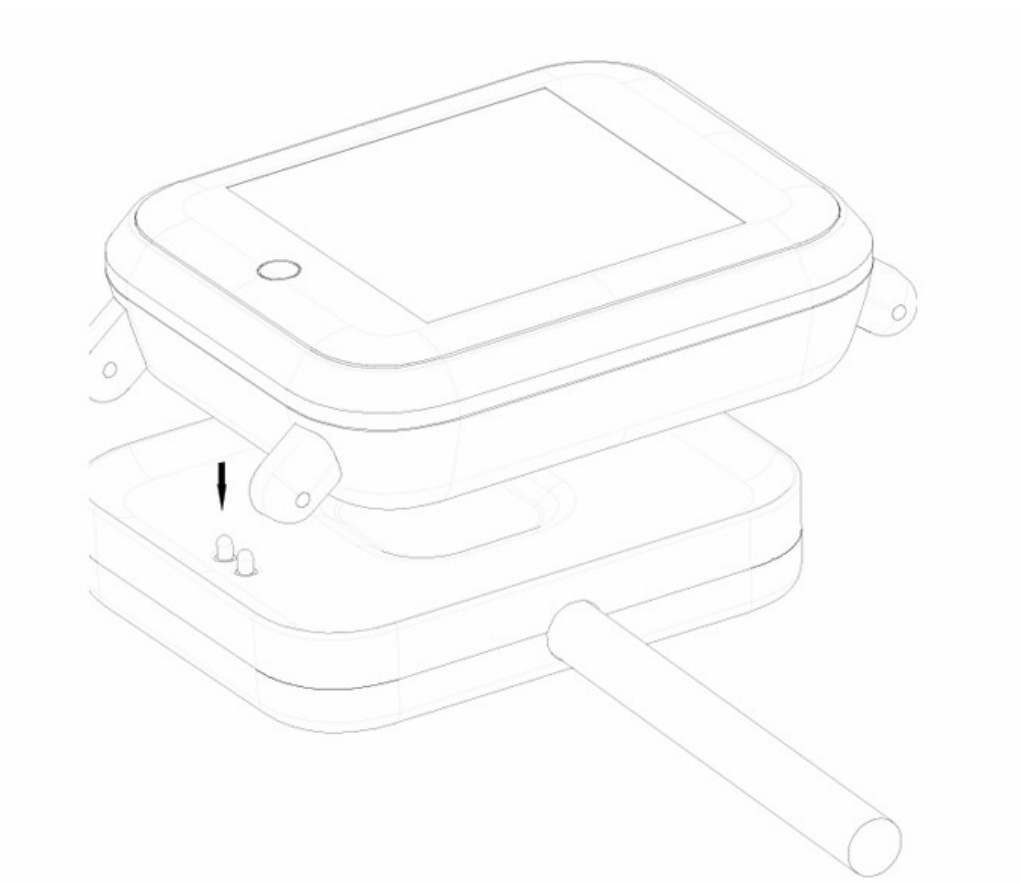
- [1 Recharge instructions](#)
- [2 Download the app](#)
- [3 Bluetooth connection](#)
- [4 Touch screen action](#)
- [5 Main menu and functions](#)
- [6 Troubleshooting](#)
- [7 Documents / Resources](#)
- [8 Related Posts](#)

Recharge instructions

Charge the device before use.

To recharge the device, insert the USB port in a charger (DC 5V, 500 mAh) or PC and position it correctly on the charging base.

Notice:



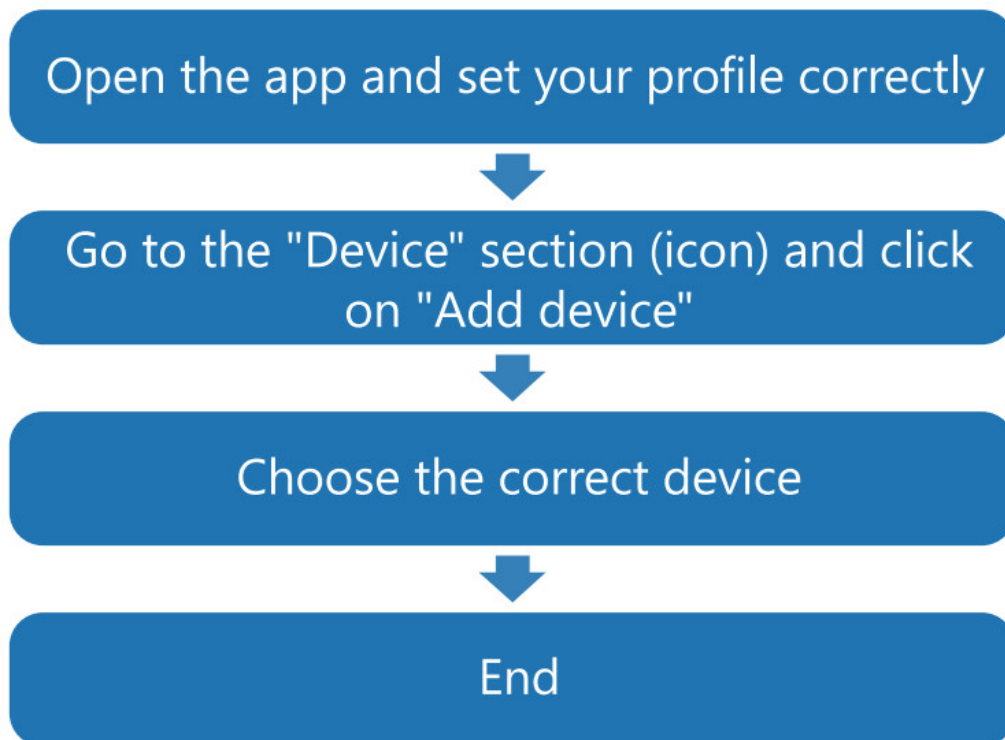
- Use the charger only on a flat and stable surface.
- If there is an obstacle between the smartwatch and the charging base, the smartwatch may not charge
- After charging the smartwatch, turn off the power. To avoid damaging the smartwatch, use the original refill accessories provided.
- Do not use if the charging device is damaged.
- Disconnect the charging device during cleaning of the smartwatch, during a thunderstorm or during a prolonged period of inactivity.
- Do not attempt to disassemble or modify the watch, the charging cable or the charging base.
- Do not twist or pinch the charging cable.
- Do not attempt to remove or replace the battery. The substances contained in this product and the battery can cause damage to the environment or health. Please dispose of it properly

Download the app

Scan the following QR code to download the app:



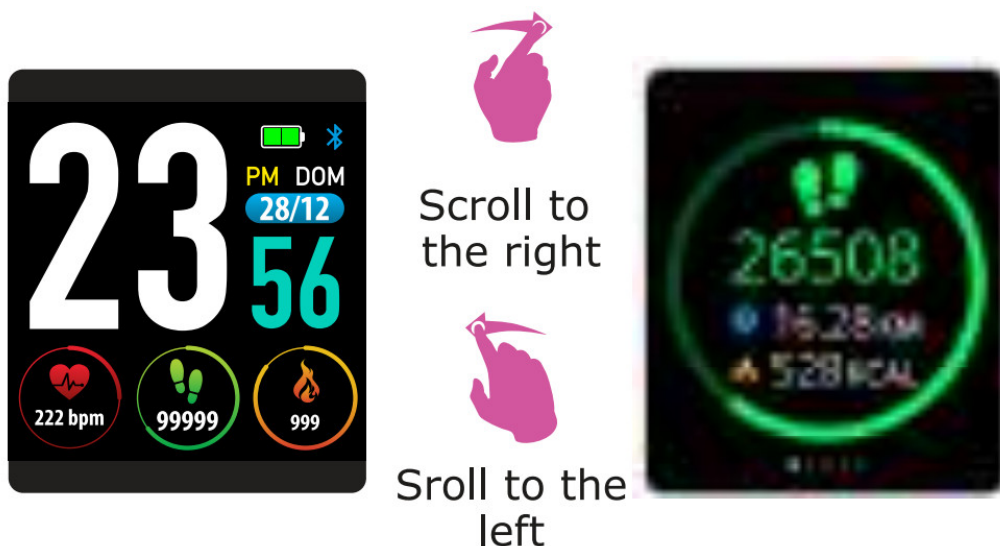
Bluetooth connection



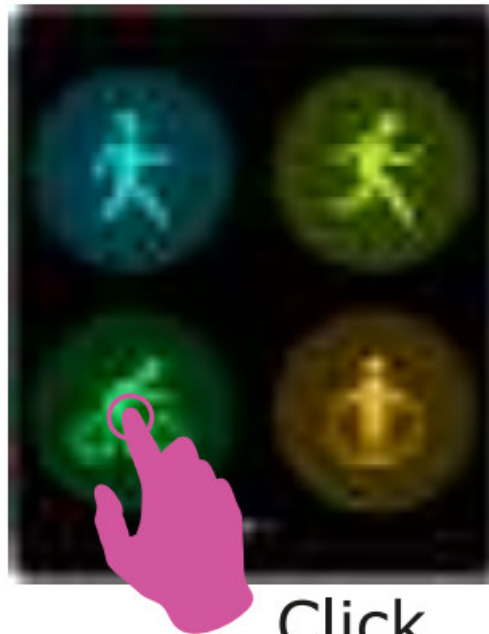
Note: – Before connecting the device, make sure that the battery is fully charged, and that the mobile phone's Bluetooth is turned on

- Before coupling the device, make sure that a previous connection is not already active; in this case, dissociate the previous connection and re-pair exclusively through the app.
- Make sure that the distance between the smartphone and the smartwatch is not excessive and that there is no interference between the two devices.
- Some functions and/or features may not be available for all commercially available smartphones (Android and Apple)

Touch screen action

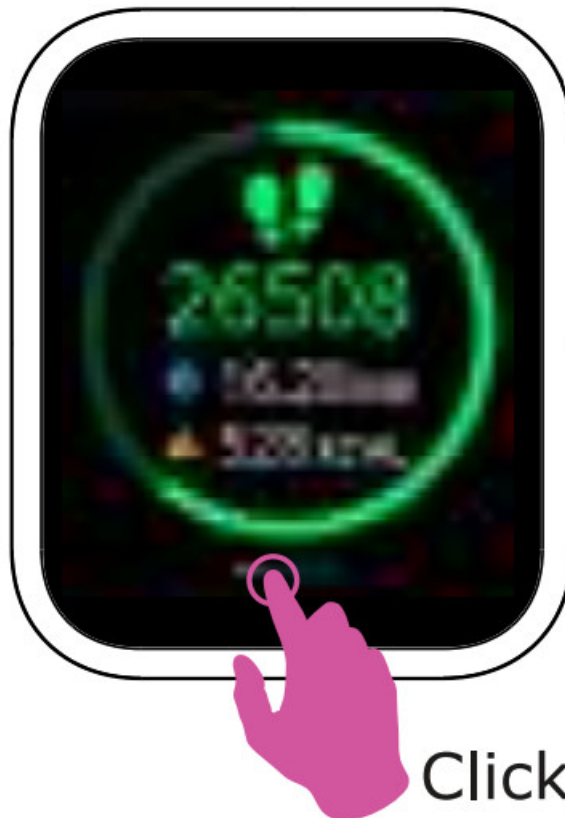


- Scroll left / right to scroll through the various menu items
- Click on the chosen icon to access Click



Click

-Click to return to the main page



Click

Main menu and functions

These functions cannot replace medical instruments. This product is not a medical device. It must not be used for any diagnosis or for other applications medical.

Sport: The smartwatch will detect automatically the steps, the distance, and calories burned. NB.: The statistics yes will reset at the end of the day.



Sleep monitor: The smartwatch will detect the duration of sleep and the statistics on its quality. The statistics will be reset to 8:00 pm



Heart rate: Measurement of heartbeats.



Training: Choose the specific icon inherent to it selected sport (7 types of sport) The smartwatch will show the last measurement.



Blood pressure: Pressure measurement blood.



Oxygen saturation: Saturation measurement of oxygen.



Weather: It will show the weather forecast today and the following day. They will update themselves automatically after the connection to the app.



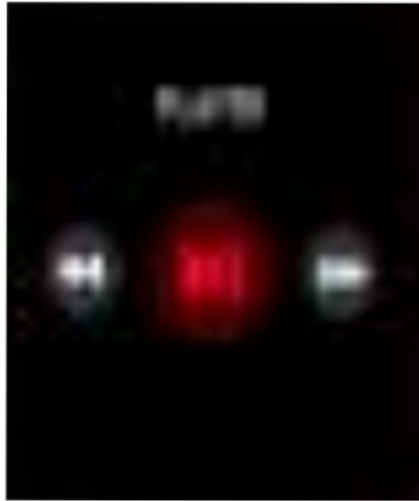
Messages: It will show the last 3 notifications received by Twitter, Facebook, Whatsapp, and messages. NB: It is possible to activate/deactivate this function via the app.



Remote acquisition: After connection, it is possible take pictures by pressing a button on the smartwatch.



Remote Music player: After connection, it is possible to listen to your favorite music.



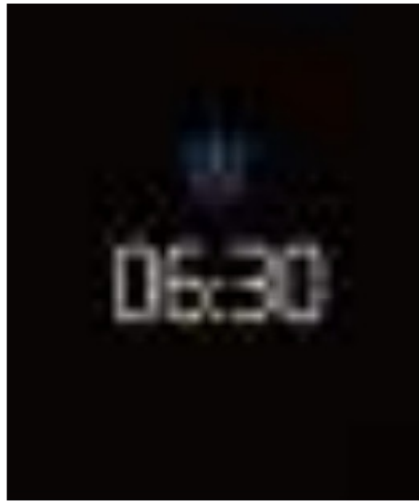
Other features: Silent, brightness, shutdown and reset.



Stopwatch: Click to start the measuring time and new click to finish.



Wake Up: Set an alarm (via app) and the device will begin to vibrate at the time established



Movement reminder: The device will start to vibrate to remind you to move after 1 hour of inactivity. NB: It is possible to activate/deactivate this function via app.



Troubleshooting

– I can't connect my smartwatch

1. Check that your smartphone's GPS and Bluetooth are active.
2. Make sure the smartwatch and the smartphone are not too far apart. The connection must take place within 10 meters.
3. Check if the smartphone is in an airplane. In airplane mode, the smartwatch cannot be connected.
4. Make sure the smartwatch is not connected to another account or smartphone.
5. Make sure your smartphone's operating system is Android 4.4 or later or iOS 9.0 or later.
6. Make sure that a previous connection is not already active; in this case, dissociate the previous connection and re-pair exclusively through the app.

– I can't synchronize the clock data

1. Check that your smartphone's GPS and Bluetooth are active.
2. Make sure the smartwatch and the smartphone are not too far apart. The connection must take place within 10 meters.
3. Check if the smartphone is in an airplane. In airplane mode, the smartwatch cannot be connected.

4. Make sure the smartwatch is connected to the smartphone via the APP.

I can't receive notifications

1. Make sure that notification permissions are active on the app.
2. Make sure the smartwatch and the smartphone are not too far apart. The connection must take place within 10 meters.

The alarm/schedule reminder does not

Make sure the settings have been "saved" after being changed in the app.

The heart rate value is not accurate or cannot be detected.

Make sure the heart rate sensor is clean and wear the device firmly. Do not move during detection, sit down and maintain a correct position in order to have a more precise heart rate value.



DECLARATION OF COMPLIANCE TECHMAIDE

MODEL: TM-STARK

Description: Smart Watch (SN70)

We, Techmade S.r.l. We declare under our sole responsibility that the product to which this document refers complies with the following standards:

SAFETY EN 62368-1:2014+A11:2017 EMC ETSI EN 301 489-1 V2.2.3 (2019-11) ETSI EN 301 489-17 V3.1.1 (2017-02)

RADIO ETSI EN 300 328 V2.2.2 (2019-07) HEALTH EN 50663:2017

More information and updates on the site www.techmade.eu

We hereby declare that all essential radio and test series have been performed and that the aforementioned product complies with all essential requirements of RED 2014/53/EU and RoHS 2011/65/EU plus RoHS (EU) 2015/863 and (EU) 2017/2102



CEO Mario De Sena

Date 12/10/2020

Made in China

TECHMADE products are guaranteed for 2 years for all malfunctions and manufacturing defects. For any information please contact your reseller or visit the website www.techmade.eu

Product imported by TECHMADE Srl – Via Liberté, 25 – 80055 Portici (NA). Tel. +39 0823 609112 PBX Fax +39 0823 214667 e-mail: info@techmade.eu

Documents / Resources

  	TECHMADE TM-STARK SN70 Stark Extreme Smartwatch [pdf] User Manual TM-STARK, SN70, Stark Extreme Smartwatch
---	---