



TECHMADE TM-ROCKS Rocks Smart Watch Instruction Manual

[Home](#) » [TECHMADE](#) » TECHMADE TM-ROCKS Rocks Smart Watch Instruction Manual 



READ CAREFULLY AND KEEP

Contents

- [1 TM-ROCKS Rocks Smart Watch](#)
- [2 MAINTENANCE AND WARRANTY](#)
- [3 WARRANTY SERVICE](#)
- [4 INTERNATIONAL WARRANTY](#)
- [5 INSTRUCTIONS](#)
- [6 Documents / Resources](#)
 - [6.1 References](#)

TM-ROCKS Rocks Smart Watch

We thank you for your preference by choosing a TECHMADE product. Please read the instructions in this manual carefully.

Your TECHMADE smartwatch is guaranteed by Techmade S.r.l. for a period of two years from the date of purchase under the terms and conditions of the warranty. As proof of purchase, a copy of the receipt and the stamp of the authorized dealer on the warranty certificate are required in the space provided. The guarantee

covers material and manufacturing defects. Your smartwatch will be repaired free of charge by our Service Center. The warranty will be void if the smartwatch is tampered with or repaired by people who are not part of the Techmade S.r.l. service network. in Italy.

During the warranty period, for material and manufacturing defects, the only components covered by the warranty are the display, the touch and the internal electronic components of the smartwatch. A component covered by the warranty will be repaired free of charge or the smartwatch will be replaced if manufacturing or material defects are found under normal conditions of use. In case of replacement, Techmade S.r.l. cannot guarantee that you will receive a smartwatch of the same model. If the requested model is not available, it will be replaced with a smartwatch of equal value and similar style.

This warranty does not cover the following:

- Damage and / or improper operation resulting from incorrect use, lack of care, accidents, normal wear and tear or from liquid materials (eg water).

In the event that warranty interventions are required, please send the smartwatch, a copy of the retailer's receipt, the warranty certificate and a description of the problem to the nearest authorized service center (for more information write to the assistenza@techmade.eu).

For repair work not covered by this warranty, the service center can carry out the requested services at a cost that will depend on the model of the smartwatch and the type of intervention required. These charges are subject to change. These expenses will be communicated and must be accepted before the execution of the services. Shipping costs and other costs other than repairs under warranty are the responsibility of the owner of the smartwatch.

The battery, in the case of the smartwatch, is inserted at the time of manufacture. As a result, its duration may be shorter than the technical specifications illustrated in our instruction booklet. All smartwatches are made of aluminum alloy, magnetic stainless steel and plastic produced in P.R.C.

Smartwatches are produced with hypoallergenic materials in full compliance with current Italian and international regulations.

MAINTENANCE AND WARRANTY

All Techmade smartwatches are built with highly professional technical criteria, using innovative materials, quality tested.

Techmade smartwatches are resistant to fresh water but are not suitable for diving and water sports, as the effectiveness of the seals could be compromised.

For all models it is recommended not to press the buttons / not to extract the crown in direct contact with water.

WARRANTY SERVICE

To obtain the warranty service, the customer must present a copy of the retailer's receipt, a description of the problem and the warranty certificate duly completed, stamped and dated by the retailer from whom the smartwatch was purchased. The postage insurance costs for sending the smartwatch to an authorized service center are exclusively borne by the owner of the smartwatch.

INTERNATIONAL WARRANTY

Your smartwatch is guaranteed for twenty-four months starting from the date of purchase according to the conditions specified in this document. This guarantee is valid internationally and covers any material and manufacturing defects. **THE WARRANTY IS VALID ONLY IF COMPLETED CORRECTLY AND COMPLETELY WITH: THE DATE OF PURCHASE, THE STAMP AND SIGNATURE OF THE OFFICIAL DEALER AND THE PROOF OF PURCHASE.** The following are excluded from the guarantee: the battery, the strap, the bracelet, the breakage of the display and the touch panel and any damage caused by improper use, negligence, shocks, accidents and normal wear and tear.

All essential test series have been performed and the aforementioned product complies with all legal requirements. This device complies with the essential requirements and other relevant provisions of the RED 2014/53/EU Directive. All essential radio test series have been performed.

Limitations in Intended Use or Foreseeable Misuse

1. Do not disassemble the device. If a repair is required, contact the nearest sales center or authorized service center (for more information, write to assistenza@techmade.eu).
2. It is recommended to keep away from electrical equipment.
3. Do not subject the device to shocks, impacts or vibrations.
4. Keep away from heat sources (e.g. radiators or cookers).
5. Do not hold the device with wet hands while it is charging. This could cause electric shock or seriously damage the appliance.
6. In the event of immersion in salt water, rinse immediately with fresh water to avoid any damage. We therefore advise against immersing, when possible, the device in salt water to avoid damage to the metal components (case, buckle, etc.) due to the corrosive agents contained in it.
7. If the device is dropped or bumped, the water guards may be damaged.
8. Do not recharge the device near flammable materials, which could catch fire due to the heat developed.
9. Take care of the battery charging plug/socket. The battery can be recharged hundreds of times before it needs to be replaced.
10. TECHMADE is not responsible for performance problems caused by applications from vendors other than TECHMADE.
11. Do not modify the product in any way. TECHMADE is not responsible for performance problems or incompatibilities caused by modifying operating system software or registry settings. Attempting to customize the operating system may cause the product or applications to malfunction.
12. This product is not a toy. Keep it out of the reach of children and pets. Product composed of small parts. If swallowed, they could cause a choking hazard.
13. Risk of explosion if battery is replaced by an incorrect type.
14. Do not throw the battery into a fire or hot oven, or mechanically crush or cut a battery. Danger of explosion.
15. Do not leave the battery in an extremely high temperature or extremely low air pressure surrounding environment. Danger of an explosion or the leakage of flammable liquids or gases. Do not use in conditions of low atmospheric pressure at high altitudes or in extremely high or low temperatures.

Identification of the characteristics of the personnel who will use the machine (physical, competence) and level of training required for users No particular training for use. Read the instruction booklet.

Product warranty

24 months warranty for the final consumer and 12 months for professional operators. Opening or attempting to open the product will void the warranty and may constitute a safety hazard.

Safety related

Frequency band: 2402-2480 MHz

Max Freq.: 6dB (4mW)

RF output: 0 dBm

Handle the device gently. Protect the device from bumps and falls.

Environmental (temperature, humidity)

Working temperatures: -20°C~40°C/4°F~104°F

Cleanliness level

Use a soft, dry cloth. Do not use alcohol or other cleaning solutions.

Battery charging

To charge the battery, use only the supplied cable. Do not try to clean the unit with chemical solvents, it could damage the finish. Wipe with a clean, dry or slightly moistened cloth.

Waterproof

The device is a water resistant device, which means it is rain proof and splash proof. If a device has an IP67 degree of resistance it means that: IP6X – Dust Resistant. It is completely protected from the ingress of dust. IPX7- Water Protection: Protection from temporary immersion in water (between 15cm and 1m depth for up to 30 minutes).

Drying

Do not try to dry the product using a microwave oven, traditional oven, hairdryer or other sources of heat. Use a dry cloth or mild detergent.

WEEE instructions



The European directive 2012/19/EU on waste electrical and electronic equipment (WEEE) provides that these appliances must not be disposed of in the normal municipal solid waste stream, but must be collected separately to optimize the flow of recovery and recycling of the materials that make them up and prevent potential damage to health and the environment due to the presence of potentially dangerous substances. The crossed out bin symbol is featured on all products as a reminder. The waste can be delivered to the appropriate collection centers, or can be delivered free of charge to the distributor upon purchase of a new equivalent equipment or without the obligation to purchase equipment smaller than 25cm. For further information on the correct disposal of these devices, please contact the relevant public service.

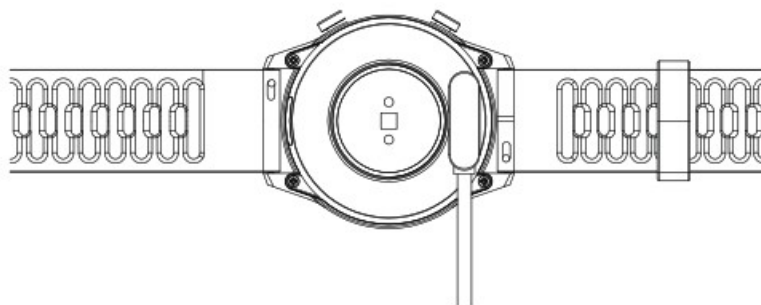


INSTRUCTIONS

1. Charging instructions

Charge the device before use.

To recharge the device, insert the USB port into a charger (5V 1A) or PC and correctly position the magnetic connector on the back of the smartwatch.



Notice:

- 1) Use the charging cable only on a dry, flat and stable surface.
- 2) If there is an obstacle between the smartwatch and the charging cable, the smartwatch may not charge properly.

- 3) After charging the smartwatch, disconnect the power (do not leave the device charging for whole nights). To avoid damaging the device, use only the supplied cable.
- 4) Do not use if the charging cable is damaged.
- 5) Disconnect the charging cable when cleaning the smartwatch, during a thunderstorm or during a prolonged period of non-use.
- 6) Do not attempt to disassemble or modify the smartwatch and charging cable.
- 7) Do not twist or pinch the charging cable.
- 8) Do not attempt to remove or replace the battery. The substances contained in this product and the battery can cause harm to the environment or health. Please dispose of it properly.

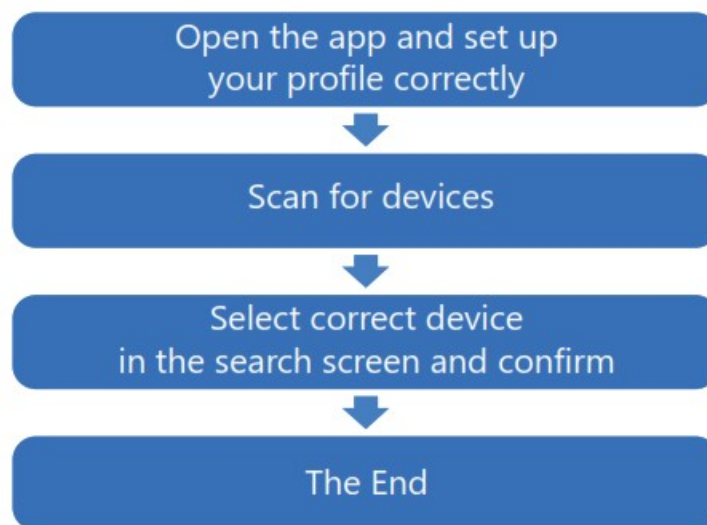
2. Download app

Scan the following QR code to download the app:



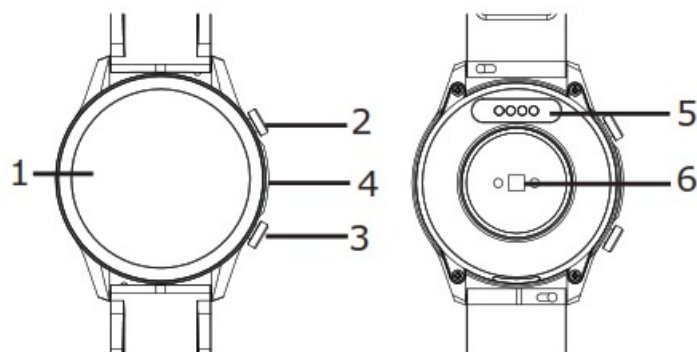
<http://www.techmadewatch.eu/appdownload/rocks.html>

3. Bluetooth connection



Note:

- Before connecting the device, make sure the battery is fully charged and the Bluetooth of the smartphone is turned on.
- Before pairing the device make sure that a previous connection is not already active; if necessary, disconnect the previous connection and re-pair exclusively through the app.
- Make sure that the distance between the smartphone and the smartwatch is not too great and that there is no interference between the two devices.
- Some functions and / or features may not be available for all smartphones (Android and Apple) on the market.



1. Display

2. Power button

3. Function button

4. Microphone

5. Charging compartment

6. Sensor

4. Touch screen actions

1. Long press the Power button to turn on/off the device. A vibration will accompany the command received; Press briefly to turn on/off the screen or to return to the previous interface.

Touch actions: Scroll left/right and up/down to scroll through the different menu items.



5. Quick menu

Scroll left/right to view information regarding: Blood pressure, heart rate, sleep and steps.

Scroll down again to view the settings for: device connection, alarm, broadcast, do not disturb and device information.

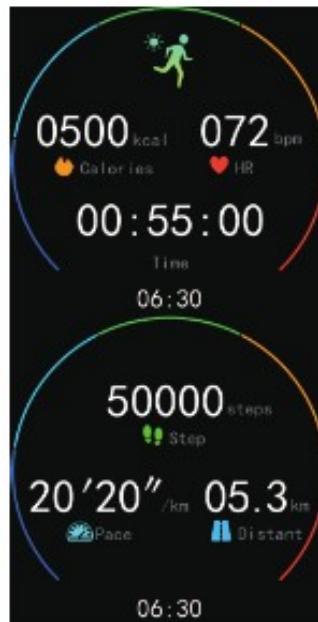
Scroll up to view the music player.

6. Main Menu and Functions

These functions cannot replace medical instruments. This product is not a medical device. It must not be used for any diagnosis or other medical applications.

Press the function button to access the menu.

Sport: Click on the icon to choose the desired sport from the 9 presets (Outdoor run, Walk, Indoor run, Treadmill, Hiking, Stepper, Cycling, Exercise bike, Elliptical, Rowing machine). – Once the desired sport has been selected, the smartwatch will automatically start the countdown. During the workout it will be possible to suspend / resume the workout by scrolling to the left and press the pause button.



– To end the workout, scroll to the left, press the stop button and confirm.

Steps: You will be able to view your steps, distance and calories burned during the day.



Sleep: Control of the quality and duration of sleep.

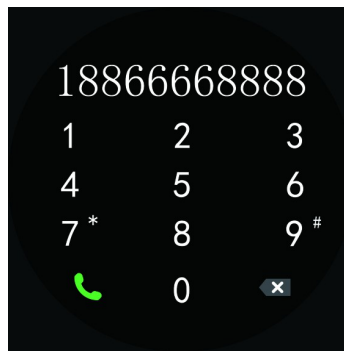


Heart rate: Measurement of heart rate.

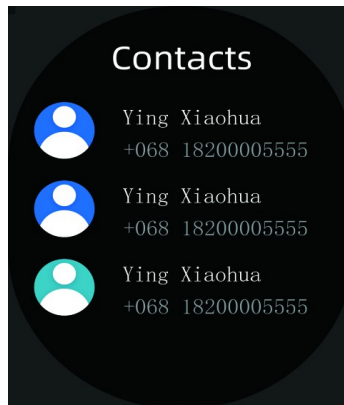


Blood Pressure: Measurement of blood pressure.

Call: A numeric keypad will appear on the display to dial the number of the person you want to call. To use this function, you will need to activate the transmission function. It will be possible to make / receive calls via the smartwatch.



Contacts: It will show the saved contacts.

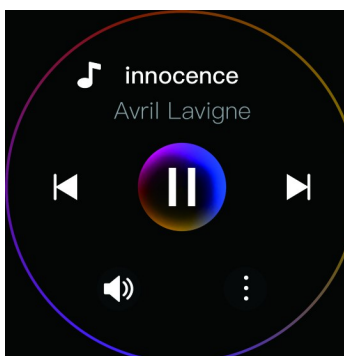


Call log: Records the list of received, dialed and missed calls.



Notifications: Includes notifications received.

Music player: Music player.



Menstrual Report: Records menstrual cycle information. Available only if activated in the App.

Other functions: Camera, Settings, Find mobile, Countdown, Alarm, Stopwatch.

7. Troubleshooting

– I can't connect the smartwatch

- 1) Check that the GPS and Bluetooth of the smartphone are turned on.
- 2) Make sure that the smartwatch and the smartphone are not too far apart. The connection must be made within approximately 10 meters.
- 3) Check if the smartphone is in airplane mode. In airplane mode, the smartwatch cannot be connected.

- 4) Make sure the smartwatch is not linked to another account or smartphone.
 - 5) Make sure your smartphone's operating system is Android 5.0 or later, iOS 9.0 or later.
 - 6) Make sure that a previous connection is not already active; if necessary, disassociate it and re-pair it exclusively through the app.
- I can't synchronize the clock data
- 1) Check that your smartphone's GPS and Bluetooth are turned on.
 - 2) Make sure that the smartwatch and smartphone are not too far apart. The connection must be made within approximately 10 meters.
 - 3) Check if the smartphone is in airplane mode. In airplane mode, the smartwatch cannot be connected.
 - 4) Make sure the smartwatch is connected to the smartphone via the app.
- I can't get notifications
- 1) Make sure that the notification permissions on the app are active.
 - 2) Make sure that the smartwatch and the smartphone are not too far apart. The connection must be made within approximately 10 meters.
- The alarm / schedule reminder does not work Make sure the settings have been "saved" after being changed in the app.
- The heart rate value is not accurate or cannot be detected Make sure the heart rate sensor is clean and wear the device securely. Do not move during the survey, sit down and maintain a correct position in order to have a more accurate heart rate value.

DECLARATION OF CONFORMITY



MODEL: TM-ROCKS Description: Smartwatch

We, Techmade S.r.l. We declare under our sole responsibility that the product to which this document refers complies with the following standards:

SAFETY	EN 62368-1:2014+A11:2017; EN 50663: 2017;
EMC	EN 301 489-1 V2.2.3; EN 301 489-17 V3.1.1;
RADIO	EN 301 489-19 V2.1.1.; EN 300 328 V2.2.2;
HEALTH	EN 303 413 V1.1.1; EN 62479: 2010;

We hereby declare that all essential radio and test series have been performed and that the aforementioned product complies with all essential requirements of RED Directive 2014/53/EU and RoHS 2011/65/EU plus RoHS amendment (EU) 2015/863



CEO Mario De Sena

TECHMADE s.r.l.
S. Leg: Via Libertà, 25
80055 Portici (NA)
S. Op: Zona Industriale ASI
Loc. Tavernette - 81025 Marcianise (CE)
P. Iva e C.F. 07116211215

Data 16/02/2021

Made in China

TECHMADE products are guaranteed for 2 years for all malfunctions and manufacturing defects.




For any information please contact your dealer or visit the website www.techmade.eu

Product imported by TECHMADE Srl – Via Libertà, 25

– 80055 Portici (NA). Tel. +39 0823 609112 PBX Fax

+39 0823 214667 e-mail: info@techmade.eu

Documents / Resources

  	TECHMADE TM-ROCKS Rocks Smart Watch [pdf] Instruction Manual TM-ROCKS Rocks Smart Watch, TM-ROCKS, Rocks Smart Watch, Smart Watch, Watch
----------------------------------------------------------------------------------------------------------------------------------------------------------------------------------------------------------------------------------------------------------------	-------------------------------------------------------------------------------------------------------------------------------------------------------------

References

- [User Manual](#)

[Manuals+](#), [Privacy Policy](#)

This website is an independent publication and is neither affiliated with nor endorsed by any of the trademark owners. The "Bluetooth®" word mark and logos are registered trademarks owned by Bluetooth SIG, Inc. The "Wi-Fi®" word mark and logos are registered trademarks owned by the Wi-Fi Alliance. Any use of these marks on this website does not imply any affiliation with or endorsement.