



**EXTIP-483
AV Extender
AV
Transmitter
and Receiver**



TECHLY EXTIP-483 AV Extender AV Transmitter and Receiver User Manual

[Home](#) » [TECHLY](#) » [TECHLY EXTIP-483 AV Extender AV Transmitter and Receiver User Manual](#) 

Contents

- [1 TECHLY EXTIP-483 AV Extender AV Transmitter and Receiver](#)
- [2 Technical features](#)
- [3 IMPORTANT SAFETY INSTRUCTIONS](#)
- [4 INTENDED USE](#)
- [5 INTRODUCTION](#)
- [6 FEATURES](#)
- [7 PACKAGE CONTENTS](#)
- [8 INSTALLATION REQUIREMENTS](#)
- [9 PANEL DESCRIPTION](#)
- [10 INSTALLATION PROCEDURES](#)
- [11 CONNECTIONS](#)
- [12 SPECIFICATION](#)
- [13 FAQ](#)
- [14 Documents / Resources](#)
 - [14.1 References](#)



TECHLY EXTIP-483 AV Extender AV Transmitter and Receiver



Technical features



SCAN
for **MORE**
PRODUCT INFO

P/N: IDATA EXTIP-483
8058956621161

Dear Customer

Thank you for purchasing this product. For optimum performance and safety, please read these instructions carefully before connecting, operating or adjusting this product. Please keep this manual for future reference.

IMPORTANT SAFETY INSTRUCTIONS

INTENDED USE



We do not permit using the device in other ways like described in this user's manual. Use the product only in dry interior rooms. Not attending to these regulations and safety instruction might cause fatal accidents, injuries, and damages to persons and property. The manufacturer/supplier assumes no liability for damages caused by failure to comply with the intended use.



To reduce risk of electric shock, this product should **ONLY** be opened by an authorized technician when service is required. Disconnect the product from mains and other equipment if a problem should occur. Do not expose the product to water or moisture.

- Your product is not a toy and is not meant for children, because it contains small parts which can be swallowed and can injure when used inappropriately!
- Please install the system and devices attached to it in a way that persons cannot be injured, or objects not be damaged for example by dropping or stumbling.
- Please remove the packing materials, because children may cut themselves on them while playing. Furthermore, there is a risk of swallowing and inhalation of incidentals and insulating material.
- Avoid places with high temperatures or humidity, or places which might come into contact with water. Do not install the product close to openings of air conditioners, or at places with an excessive amount of dust or smoke.
- Do not install the product at places subject to vibration, or oscillation
- Do not modify and alter the product and any accessories! Do not use any damaged parts.
- Keep enough space around all devices for a good ventilation and free motion and to avoid damages.
- Do not unplug the device when it is in using, keep distance from flammable and explosive devices.
- Power supply: DC 5V, usage only the supplied power unit, do not use the power supply if it is damaged.
- Don't mixed up HDMI Extender Sender with HDMI Extender Receiver.

INTRODUCTION

This product is a 4K@60Hz HDMI Extender kit consisting in a sender and a receiver. The 4K@60Hz HDMI signal can be extended up to 120m via Cat.6 and above network cable, supporting one-to-one connection, one-to-many connections via gigabit switch or switch cascades. It also supports IR passback functions and can be widely used in meetings, home entertainment, educational presentations and other fields.

FEATURES

- High definition and low-latency transmission.
- Support up to 4096×2160@60Hz resolution, backward compatible.
- Compatible with Cat5e/6 or above network cables, transmission distance of Cat6 cable is 120 meters.
- Support one-to-one or one-to many connections through the gigabit switch.
- Support IR passback (20~60kHz).
- Firmware can be upgraded through Micro USB.
- Lightning protection, surge protection, ESD protection.
- Support stable 24/7 operation.

PACKAGE CONTENTS

- HDMI EXTENDER sender TX x 1pc
- HDMI EXTENDER receiver RX x 1pc
- User manual x 1pc
- DC5V/1A x 2pcs
- IR Blaster Extension cable x1pc
- IR Receiver Extension cable x1pc

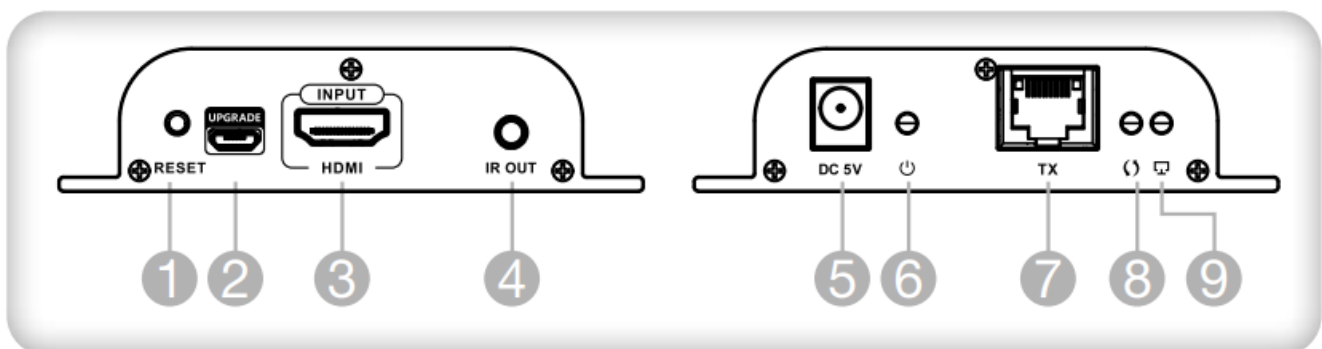
Note: above accessories are contented in the regular package for the kit with transmitter and receiver. If buy HDMI Extender TX or HDMI Extender RX separately, the package contents would be different.

INSTALLATION REQUIREMENTS

1. HDMI source device (computer graphics card, DVD, PS3, HD monitoring equipment, etc..)
2. HDMI display device like SDTV, projector with HDMI port
3. Network cables: UTP/STP Cat5e/6 networking cables, which following the standard of EIA568B

PANEL DESCRIPTION

HDMI EXTENDER TX (Sender)



1. Reset
2. Firmware upgrading
3. HDMI signal input
4. IR signal output to connect with blaster extension cable
5. Power input (DC5V)
6. Power light

The indicator will turn on when the power is turned on

7. RJ45 signal output

8. Data transmission light

Light off: No data transmission

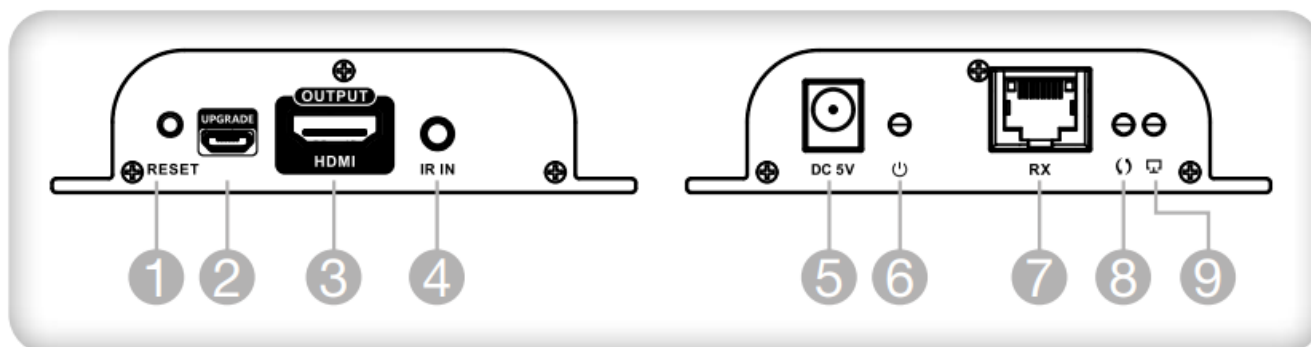
Steady on: The data is transmitting

9. Network link light

Light off: nessuna connessione di rete

Steady on: network connection is normal

HDMI EXTENDER RX (Receiver)



1. Reset

2. Firmware upgrading

3. HDMI signal output

4. IR signal input to connect with blaster extension cable

5. Power input (DC5V)

6. Power light

The indicator will turn on when the power is turned on

7. RJ45 signal input

8. Data transmission light

Light off: No data transmission

Steady on: The data is transmitting

9. Network link light

Light off: nessuna connessione di rete

Steady on: network connection is normal

INSTALLATION PROCEDURES

How to make a Cat.5/6 network cable

Follow the standard EIA-568B:

1. Orange/white

2. Orange

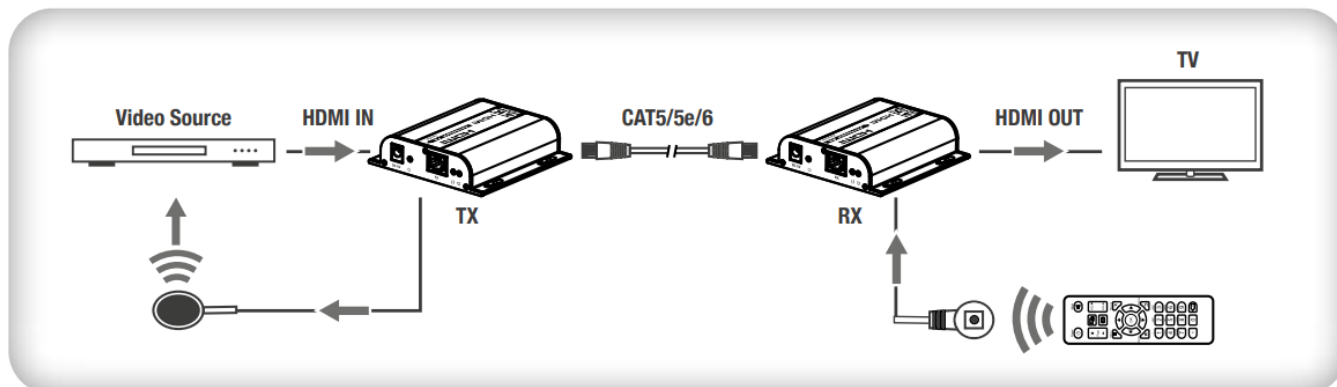
3. Green/white

4. Blue

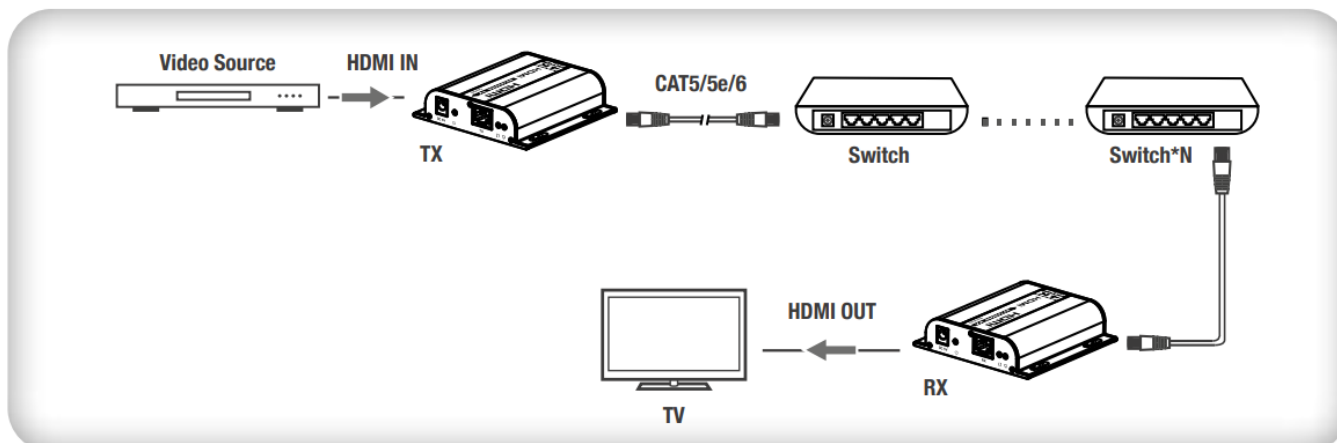
5. Blue/white
6. Green
7. Brown/white
8. Brown

CONNECTIONS

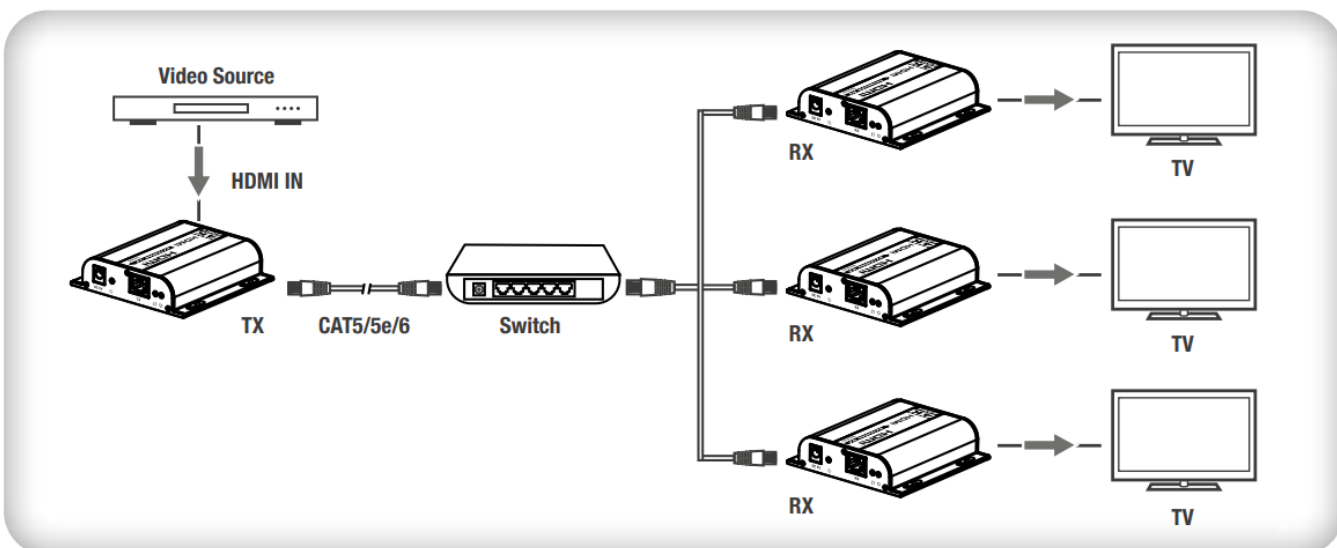
a. Point to point connection: Up to 120 meters transmission distance over single CAT6.



b. LAN switch cascade connection: By using LAN Switch/router, realize unlimited extension.



c. One-to-many connection: By using network router/switch, one sender to several receivers, realize extender & splitter function.



Note: Gigabit (1000Mbps) switcher is recommended in LAN transmission.

Note:

1. If it is PoE version, please use PoE network router/switch
2. It is recommended that Gigabit Ethernet switched (1000Mbps) be used in LAN.

IR USER GUIDE

1. IR blaster extension cable should plug in the IR OUT port of the sender, IR receiver extension cable should plug in the IR IN port of the receiver.
2. The emitter of the IR blaster extension cable should be as close as possible to the IR receiving window of the source device.
3. Point the remote control at the receiving head of the IR receiver extension cable to operate.

SPECIFICATION

SENDER		RECEIVER
VIDEO		
Input interface	1 x HDMI	1 x RJ45
Output interface	1 x RJ45	1 x HDMI
HDMI lenght	≤ 5m	≤ 5m
Maximum transfer rate	18 Gbps	
Compatibility	HDMI 2.0	
	HDCP 1.4/HDCP 2.2	
	4096×2160@24/30/50/60Hz,	
	3840×2160@24/30/50/60Hz,	
Resolutions	1080p@24/25/30/50/60Hz, 720p@50/60Hz,	
	576p@60Hz, 480p@60Hz, 1920×1200,	
	1680×1050, 1600×900, 1280×1024,	
	1280×960, 1280×720, 1024×768, 800×600	
Connection types	<ul style="list-style-type: none"> • One-to-one connection • One-to-many connection • Switch cascading 	
Transmission distance	<ul style="list-style-type: none"> • 120m with Cat6 cable • 100m with Cat5e cable 	

Transmission	• 1080P: 80 ~ 130ms	
latency	• 4K@60Hz: 150 ~ 220ms	
AUDIO SIGNAL		
Input interface	1 x HDMI	1 x RJ45
Output interface	1 x RJ45	1 x HDMI
HDMI output	LPCM 2.0	

COMMAND SIGNAL	
IR Interface	1 x 3.5mm IR OUT 1 x 3.5mm IR IN
IR receiving range	≤ 5m
IR frequency	20kHz – 60kHz
POWER	
Power Supply	DC5V/1A
Power consumption	TX: ≤3.5W RX: ≤2.5W
OPERATING ENVIRONMENT	
Working temperature	-20°C ~ 60°C
Storage temperature	-30°C ~ 70°C
Humidity	0-90% RH (no condensation)
Housing	Aluminium
Weight	156g 154g
Dimension	96,8 (L) x 94 (D) x 23,7 (H) mm
Protection	ESD protection 1a Contact discharge level 2 (+/-4KV) 1b Air discharge level 3(+/-8KV) Implementation of the standard: IEC61000-4-2 Lightning protection, Surge protection

Maintenance: clean only with a dry cloth. Do not use cleaning solvents or abrasives.

Warranty: no guarantee or liability can be accepted for any changes and modifications of the product or damage caused due to incorrect use of this product.



In compliance with EU Directive WEEE this product is marked with this symbol. It means that used electrical and electronic products should not be mixed with general household waste. There is a separate collections system for these products in compliance with WEEE directive, otherwise contaminative and hazardous substances can pollute the environment.



With the CE sign, Techly® ensures that the product is conformed to the basic European standards and directives. We also declare the product's compliance with the minimum requirements expressed in Chapter II of EU Regulation 2023/988 (GSPR) relating to general product safety

FAQ

Q: TV display “Waiting for connection” on the right corner?

A: Please check if the power supply of TX (Sender) and switch (if used) is connected, and make sure connecting cable is firmly.


Q: TV display “Please check the TX input signal” ?

- A:
1. Please check if there is a HDMI signal input of TX.
 2. Try to connect the signal source directly to display device to see if there is signal output from source device or change the signal source, HDMI wire and try again.

Q: Display not fluent, not stable?

- A:
1. Please check the cable length between the TX to switch, the switch to the RX and the connection between each level is within the required range.
 2. Click the “reset” button on the TX/RX front panel, reset and reconnect.

Documents / Resources

	<p>TECHLY EXTIP-483 AV Extender AV Transmitter and Receiver [pdf] User Manual EXTIP-483 AV Extender AV Transmitter and Receiver, EXTIP-483, AV Extender AV Transmitter and Receiver, Transmitter and Receiver, and Receiver</p>
---	---

References

-  [TV Brackets, Audio Video HDMI, Networking | TECHLY](#)
- [User Manual](#)

[Manuals+](#), [Privacy Policy](#)

This website is an independent publication and is neither affiliated with nor endorsed by any of the trademark owners. The "Bluetooth®" word mark and logos are registered trademarks owned by Bluetooth SIG, Inc. The "Wi-Fi®" word mark and logos are registered trademarks owned by the Wi-Fi Alliance. Any use of these marks on this website does not imply any affiliation with or endorsement.