



techedge LogExtender Software User Manual

[Home](#) » [techedge](#) » techedge LogExtender Software User Manual 

techedge

LogExtender
User Manual



Changelog	
Version	Date
1.0.1	4/2/2022
Latest Updates: • Updated SG support address	

CONTACT DETAILS

TechEdge (UK) Limited
Trident House, 5 Lower Middle St
Taunton, Somerset TA1 1SF
Phone: +44 20 7100 9948

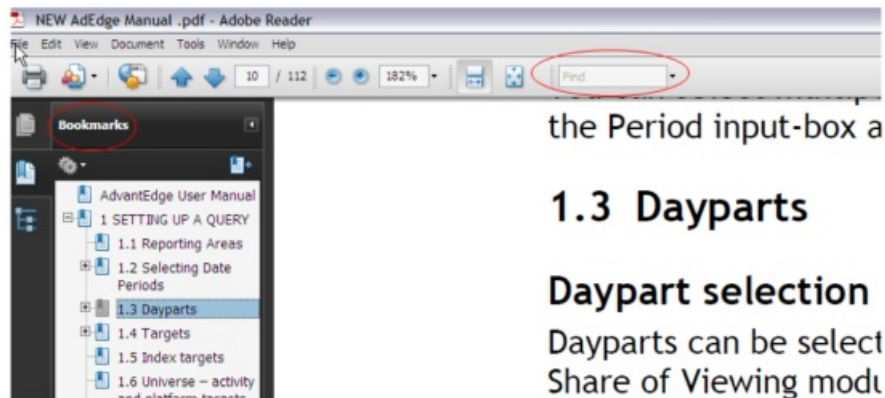
ABOUT THIS USER MANUAL

We will update the manual whenever we release a new LogExtender feature sheet.

Please consider the environment before printing this manual. An electronic version has the benefit of being much easier to search and navigate than a paper version, and due to the continual development of our products this manual is updated on a regular basis.

This manual is provided with bookmarks corresponding to the table of contents.

Open the side panel in your PDF viewer and use Bookmarks to quickly navigate through the document. You can also use the 'Find' feature in your PDF viewer to search for specific terms.



If you would like to receive feature sheets highlighting new developments in TechEdge products please email support@groupstechedge.com to be added to the mailing list. We also welcome your comments or suggestions.

Thanks,

TechEdge Support team

Contents

- [1 Introduction](#)
- [2 Setu p](#)
- [3 Making a query](#)
- [4 Output in AdvantEdge](#)
- [5 Documents / Resources](#)
 - [5.1 References](#)
- [6 Related Posts](#)

Introduction

LogExtender is designed to easily harmonize program titles and another program attributes. In addition to harmonizing data such as the program title in the official program logs, LogExtender also allows you to append your own additional information to the program logs such as production company, acquisition cost, extended genre classification, etc.

Once a title is harmonized any existing and future transmissions will automatically be linked to the harmonized title. All data changes will instantly be available in AdvantEdge for analysis.

Setu p

2.1 Harmonized Field Answers

Before you can begin harmonizing program titles and allocate additional attributes to these harmonized titles you will have to enter the selectable options for each field. There are 5 fields where field 4 and 5 are dependent of each other. To add values to a field you click the [Add] button and enter a new value.

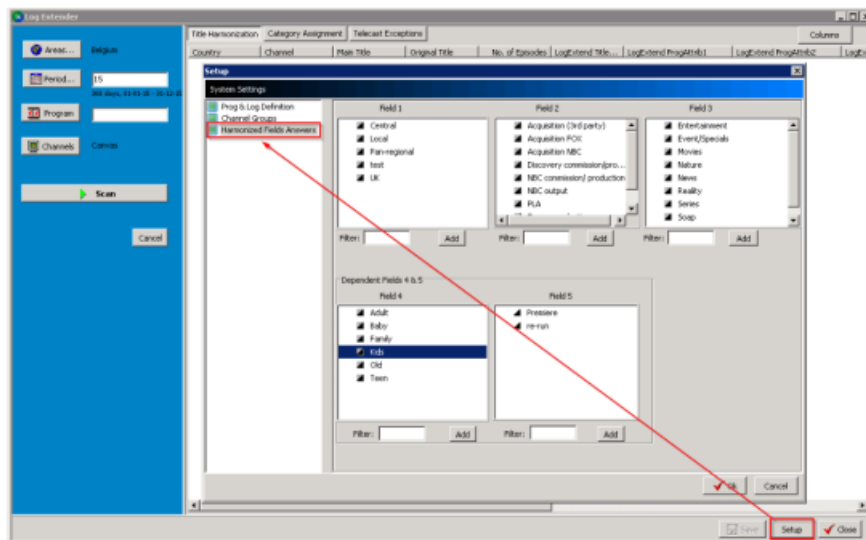


Figure 1: Harmonized Fields Answers

2.2 Chanel Groups

Harmonized titles and the allocated attributes can be applied only to transmissions on specific channels or channel groups if desired. To use this function you must first create these groups in the “Channel Groups” tab.

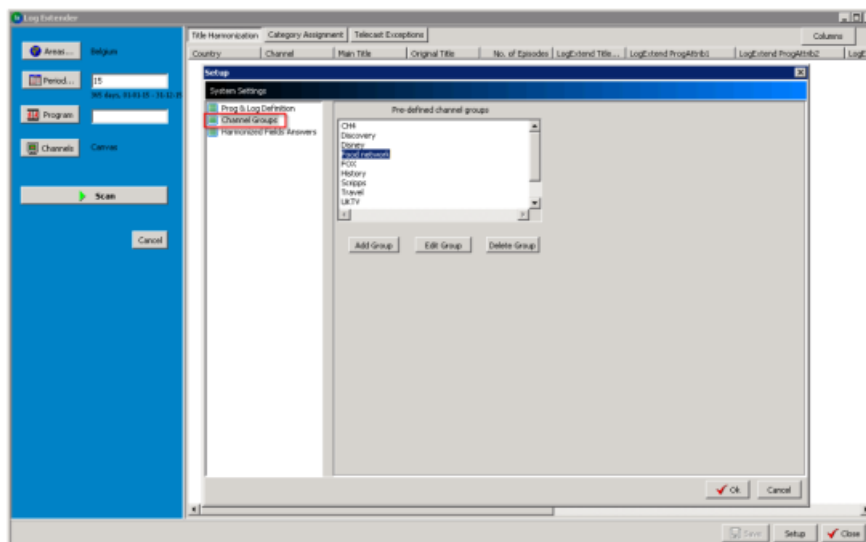


Figure 2: Channel Groups

2.3 Prog & Log Definition

The Prog & Log Definition tab allows you to switch between working on Standard or Internal program logs (where available).

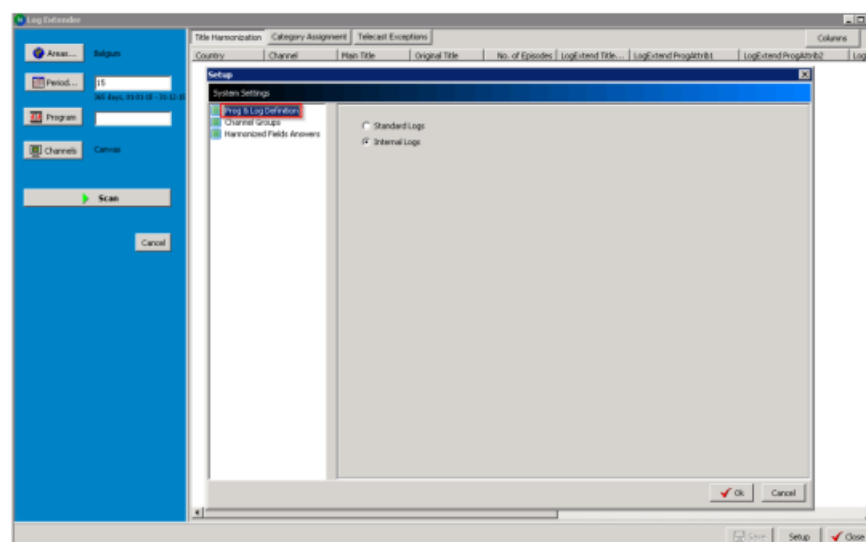
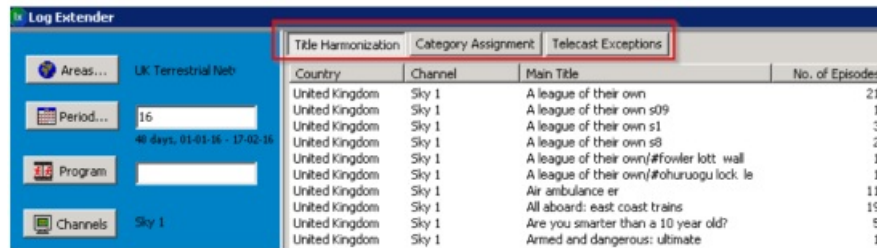


Figure 3: Prog & Log Definition

Making a query

The LogExtender has three sections: Title Harmonization, Category Assignment, and Telecast Exceptions.



Country	Channel	Main Title	No. of Episodes
United Kingdom	Sky 1	A league of their own	21
United Kingdom	Sky 1	A league of their own s09	1
United Kingdom	Sky 1	A league of their own s1	3
United Kingdom	Sky 1	A league of their own s8	2
United Kingdom	Sky 1	A league of their own/#fowler lott wall	1
United Kingdom	Sky 1	A league of their own/#ohuruogu lock le	1
United Kingdom	Sky 1	Air ambulance er	11
United Kingdom	Sky 1	All aboard: east coast trains	19
United Kingdom	Sky 1	Are you smarter than a 10 year old?	5
United Kingdom	Sky 1	Armed and dangerous: ultimate	1

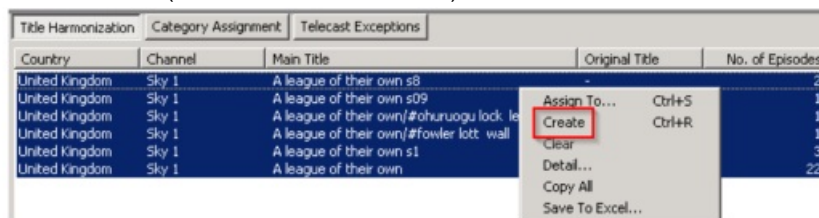
Figure 4: Sections in LogExtender

3.1 Title Harmonization

Title Harmonization scans the data and displays the number of transmissions for each unique title.

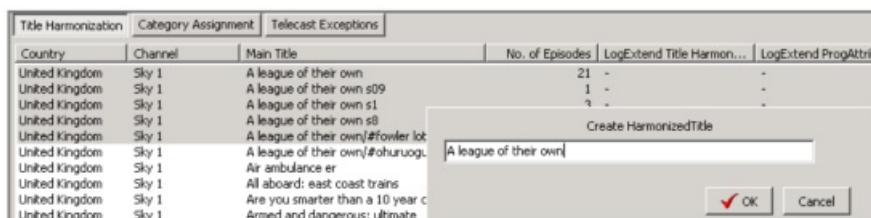
The user can right click on a title (or multiple titles if a multi-selection is made using Shift or Ctrl keys) and apply a harmonized title. The data will be available in AdvantEdge for analysis instantly.

Typically, different series can appear under different titles in the program log. In the screenshot above “A league of their own” appears under “A league of their own s09”, “A league of their own s1”, “A league of their own /#fowler lott wall”, etc. By highlighting the relevant titles and selecting “create” the user is able to create a new Harmonized Title named “A league of their own” (see screenshots below):



Country	Channel	Main Title	Original Title	No. of Episodes
United Kingdom	Sky 1	A league of their own s8	-	2
United Kingdom	Sky 1	A league of their own s09	-	1
United Kingdom	Sky 1	A league of their own/#ohuruogu lock le	-	1
United Kingdom	Sky 1	A league of their own/#fowler lott wall	-	1
United Kingdom	Sky 1	A league of their own s1	-	3
United Kingdom	Sky 1	A league of their own	-	22

Figure 5.1: Title Harmonization - Create

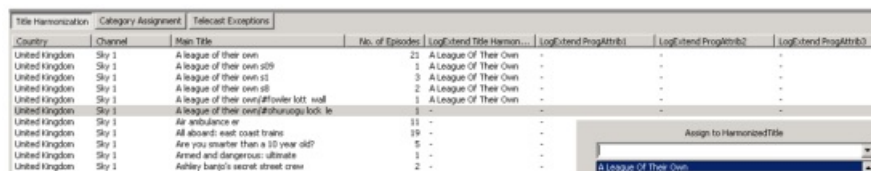


Country	Channel	Main Title	No. of Episodes	LogExtend Title Harmon...	LogExtend ProgAttrib
United Kingdom	Sky 1	A league of their own	21	-	-
United Kingdom	Sky 1	A league of their own s09	1	-	-
United Kingdom	Sky 1	A league of their own s1	3	-	-
United Kingdom	Sky 1	A league of their own s8	2	-	-
United Kingdom	Sky 1	A league of their own/#fowler lott wall	1	-	-
United Kingdom	Sky 1	A league of their own/#ohuruogu lock le	1	-	-
United Kingdom	Sky 1	Air ambulance er	11	-	-
United Kingdom	Sky 1	All aboard: east coast trains	19	-	-
United Kingdom	Sky 1	Are you smarter than a 10 year c	5	-	-
United Kingdom	Sky 1	Armed and dangerous: ultimate	1	-	-

Figure 5.2: Title Harmonization - Create

All future transmissions with one of these titles will automatically be harmonized.

Once the initial harmonization work has been done the window will only display new titles which have not yet been harmonized creating an easy overview. A title can be added to an existing harmonized title by right-clicking on the title and choosing the ‘Assign to...’ option. This will be brought up a dropdown list of available harmonized titles to select from:



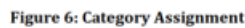
Country	Channel	Main Title	No. of Episodes	LogExtend Title Harmon...	LogExtend ProgAttrib
United Kingdom	Sky 1	A league of their own	21	A League Of Their Own	-
United Kingdom	Sky 1	A league of their own s09	1	A League Of Their Own	-
United Kingdom	Sky 1	A league of their own s1	3	A League Of Their Own	-
United Kingdom	Sky 1	A league of their own s8	2	A League Of Their Own	-
United Kingdom	Sky 1	A league of their own/#fowler lott wall	1	A League Of Their Own	-
United Kingdom	Sky 1	A league of their own/#ohuruogu lock le	1	A League Of Their Own	-
United Kingdom	Sky 1	Air ambulance er	11	-	-
United Kingdom	Sky 1	All aboard: east coast trains	19	-	-
United Kingdom	Sky 1	Are you smarter than a 10 year old?	5	-	-
United Kingdom	Sky 1	Armed and dangerous: ultimate	1	-	-
United Kingdom	Sky 1	Ashley Jorgensen's secret street crew	2	-	-

Figure 5.3: Title Harmonization - Create

3.2 Category Assignment

Under Category Assignment, it is possible to add additional attributes to a program that has been harmonized.

The additional attributes could be extended genre classification, acquisition cost, production company, first airing date etc. All these attributes will automatically be added to all harmonized program titles in AdvantEdge on both back data and future data. In the screenshot below the harmonized title “A League Of Their Own” has been selected and the additional attributes are assigned to this title.



Telecast Exceptions display every single transmission with date and time, original title and harmonized title. This allows you to make exceptions from the rules that are applied only to the specified transmissions. Right-click on the title/titles and select “edit” or “assign to” to set up an exception. Following these steps, the specific title and attributes will appear under these fields.

Figure 7.1: Telecast Exceptions

Figure 7.2: Telecast Exceptions

Figure 7.3: Telecast Exceptions

Figure 7.4: Telecast Exceptions

The changes made in the LogExtender are instantly available in AdvantEdge. This allows the user to search and filter on harmonized titles and additional program attributes.

