

TechBee JK-PM04 Power Monitor



# TechBee JK-PM04 Power Monitor User Manual

[Home](#) » [Techbee](#) » TechBee JK-PM04 Power Monitor User Manual 

## Contents

- 1 TechBee JK-PM04 Power Monitor
- 2 MUST-READ NOTES:
- 3 Part 1. Safety Information
- 4 Part 2. Product Overview
- 5 How the buttons work
- 6 Part 3. Quick Guide to Use the Monitor
- 7 Part 4. Screen Display Mode
- 8 Part 5. Specifications
- 9 Documents / Resources
  - 9.1 References

# TECH BEE

TechBee JK-PM04 Power Monitor



**Model NO.:** JK-PM04

Thank you for purchasing the JK-PM04 Power Monitor by Tech bee.

Should you have any questions or concerns, please contact us via email: [techbee@foxmail.com](mailto:techbee@foxmail.com)

### **MUST-READ NOTES:**

1. It's normal that the screen protector may have a few slight scratches or bubbles. Please peel it off before use.
2. The best viewing angle is at 45° from the bottom of the meter to its top.
3. When unplugged, the screen will go blank with your settings automatically saved if there is no button operation within 30s. To resume, please press and hold the corresponding button(s) to re-enter the setting mode.
4. With the internal battery, you can set the meter or check the monitored data when unplugged. Usually, the battery can last for about 3 years. If the battery is dead, the power meter won't respond to any button operation when unplugged. In this situation, you can plug the meter into a live outlet to set it, and then move it to another outlet for use; to check the monitored data, you can move it to any live outlet convenient to you.

### **Part 1. Safety Information**

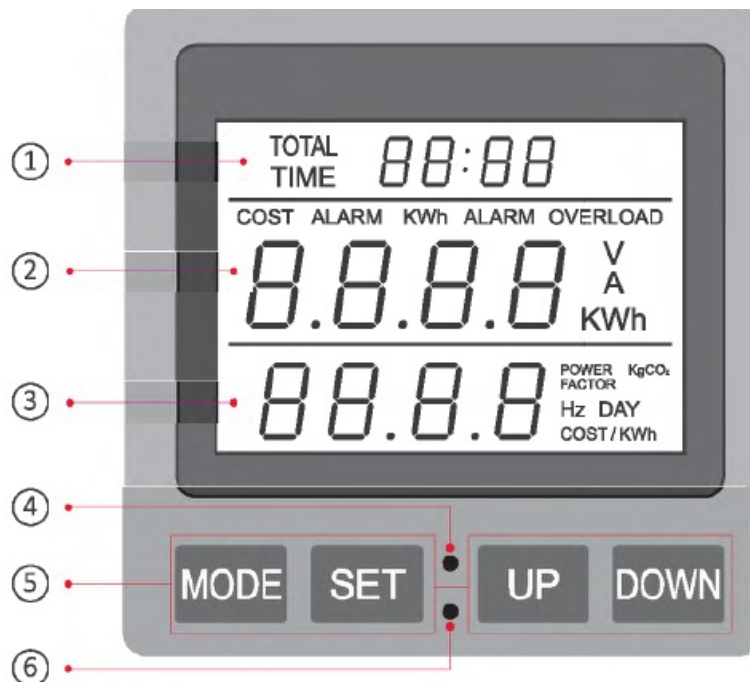
To avoid electric shock or injury, read the "Safety Information" carefully before using the Monitor.

1. Before using this product, check the shell for cracks or shortage of plastic parts, pay attention to the insulation around the connector. DO NOT use if damaged.
2. DO NOT overload wall outlets, extension cords, or power strips as this can cause danger. We recommend plug the power monitor directly into a wall outlet and then plug the appliance you want to test directly into the monitor.

3. Always check the ratings of your appliance before connecting it to the monitor, and make sure NOT to exceed the maximum ratings of the power meter to avoid any damage or accident.
4. Indoor use only. DO NOT use or store in high humidity, high temperature or high magnetic field. Do NOT touch the device with wet hands.
5. DO NOT allow children to operate this device and keep children away from the monitor.  
Do NOT disassemble or repair the product under any circumstance.  
Contact us for help if you have any problem with the monitor.

## Part 2. Product Overview

This power meter can measure the Watts(active power), Electricity Consumption, the Total Cost and so on. It helps you track your electricity consumption to provide necessary information on how you can make your home more energy efficient.



## Getting to know your Power Monitor

1. Cumulative Time
2. Watt/ KWh/ Voltage/ Current/ Alarm of KWh ,Cost ,Overload
3. Cost I Power Factor/ Carbon Emission/ Frequency/ Day/ Unit Price
4. ED Indicator
5. Operation Buttons
6. RESET Button

## How the buttons work

RESET : to reset the device to factory mode

**RESET** : to reset the device to factory mode

**MODE** : to change the display mode of the screen or to move the cursor during setting

**SET** : press and hold it for more than 3s to set the unit price of electricity or short press to confirm your settings

**UP** **DOWN** : to increase or decrease the digits during setting

**MODE** + **SET** : press and hold the two buttons together for more than 3s to set the Overload Alarm

**MODE** + **UP** : press and hold the two buttons together for more than 3s to set the Cost Alarm

**MODE** + **DOWN** : press and hold the two buttons together for more than 3s to set the KWh Alarm

### **Part 3. Quick Guide to Use the Monitor**

#### **Step 1: to set the unit price of the electricity**

1. Peel off the screen protector, and then press the RESET button to reset the device.
2. Press and hold the SET button till you can see the word "COST/KWh" flashing in the third row of the screen.
3. Press the MODE button to move the cursor, and then press the UP/DOWN button to select the desired digits from 0~9.
4. Press the SET button to confirm the price.

#### **Step 2: to change the alarm limit for overload**

\*Since the product is designed for the global market, the default value for overload is 3680w. To use in the US, please adjust the limit to 1800w or less. Please follow the steps below:

1. Press and hold the MODE+ SET buttons together till you can see the word "OVERLOAD" flashing on the screen.
2. Press the MODE button to move the cursor and press the UP/DOWN button to increase or decrease the digits (maximum 1800w); press SET to confirm and screen will enter display MODE-1 as shown in Part 4.
3. Following the corresponding steps in Part 4, you can also set the limits for the electricity consumption alarm and the total cost alarm, but it's optional.

#### **Step 3: to monitor your appliance with the power meter**

1. Plug the power monitor into an active wall socket, and plug your appliance (maximum 1800w) into the monitor.
2. When the load power is larger than O.Sw, the time begins to accumulate, the LED indicator illuminates and it will flash when an alarm occurs.
3. To check the monitored data, press the MODE button repeatedly until the desired display mode appears.

#### **PLEASE NOTE:**

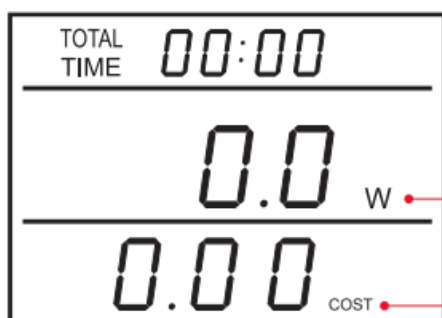
To only clear the monitored data such as total cost, mini/max power and the like while retain your original settings

for the COST/KWh and the alarm, hold the DOWN button till the screen flashes, and then press the MODE button(when the screen is flashing, if you press the SET button or if there is no further operation, the monitored data won't be cleared).

#### Part 4. Screen Display Mode

The LCD has a total of 11 display modes as shown in the images below(MODE-1 ~ MODE-11). When you finish the unit price setting in Part 3, the screen will enter display MODE-1; press the MODE button repeatedly, you can navigate through all the display modes from MODE-1 ~ MODE-11 in cycles.

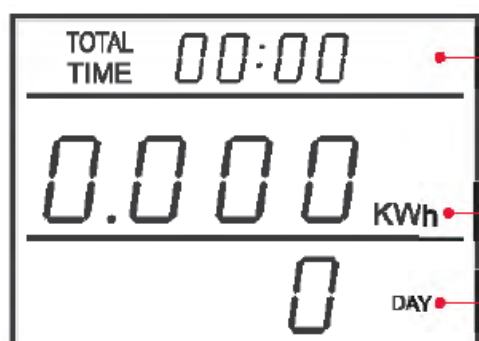
##### MODE-1: Watt/Cost



Watt: real-time Wattage (active power) of your device

Cost: total cost of the electricity consumption (based on the unit price you set)

##### MODE-2: TIME/Total Electricity Consumption/Day



\*1

Electricity Consumption: cumulative electricity consumption( in KWh)

Day: the total running days of your appliance(when the device is drawing current)

\*1 – Cumulative time: The total running Hours, Minutes and Seconds of your appliance(when the device is drawing current). For the first 0~Go minutes, the 2 digits on the left mean “minutes”, the other 2 digits on the right mean “seconds”; after 60 minutes, the first 2 digits on the left mean “hours”, and the other 2 digits on the right mean “minutes”. It repeats like this every 24 hours.

**PLEASE NOTE:** The days plus the cumulative time equals the total active time of your appliance during the monitored period. Please do not use this data to compute the total electricity by the Day, Week, Month or Year.

##### MODE-3: Carbon Emissions

### MODE-3: Carbon Emissions



Carbon Emissions: Emission of CO<sub>2</sub> in Kg

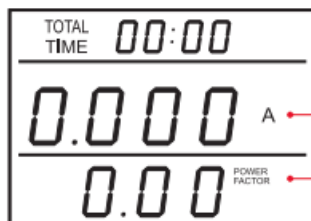
### MODE-4: Voltage/ Frequency



Voltage: Real-time Voltage on your appliance

Frequency: AC frequency of the grid

### MODE-5: Current / Power Factor



Current: Real-time current of your device (in Amperes)

Power Factor: The power factor of the appliance connected to it

### MODE-6: Minimum Power



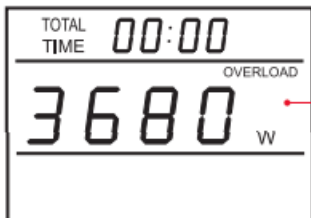
Minimum Power: The minimum power recorded during operation

### MODE-7: Maximum Power



Maximum Power: The maximum power recorded during operation

### MODE-8: Overload Display



Overload Alarm: when the load exceeds the set overload alarm power, the word "OVERLOAD" and the indicator light will flash with the same frequency to remind the user.

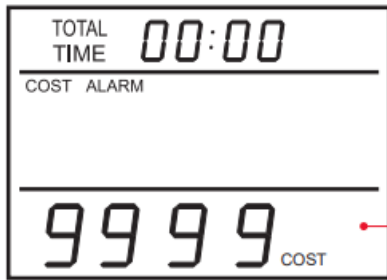
#### To set the alarm power:

1. Press and hold the MODE + SET buttons together till you can see the word "OVERLOAD" flashes on the screen.
2. Press the MODE button to move the cursor and press the UP/DOWN button to increase or decrease the digits (maximum 1800w); press SET to confirm and screen will enter display MODE-1.

3. When alarm is triggered, the word "OVERLOAD" and the LED indicator will flash.

#### MODE-9: Alarm of Cost

##### MODE-9: Alarm of Cost



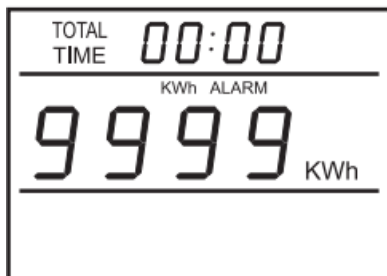
Alarm of Cost: when the electricity cost reaches the set alarm cost, the word "COST ALARM" and the indicator light will flash with the same frequency to remind the user.

#### To set the alarm cost:

1. Press and hold the MODE + UP buttons together till you can see the word "COST ALARM" flashes on the screen.
2. Press the MODE button to move the cursor and press the UP/DOWN button to increase or decrease the digits.
3. Press SET to confirm the setting and the screen will enter display MODE-1.

#### MODE-10: Alarm of KWh

##### MODE-10: Alarm of KWh



Alarm of KWh: when the accumulative electricity consumption reaches the set alarm electricity consumption, the word "KWh ALARM" and the indicator light will flash with the same frequency to remind the user.

#### To set the alarm electricity consumption:

1. Press and hold the MODE+ DOWN buttons together till you can see the word "KWh ALARM" flashes on the screen.
2. Press the MODE button to move the cursor and press the UP/DOWN button to increase or decrease the digits.
3. Press SET to confirm the setting and the screen will enter display MODE-1.

#### MODE-11: Unit Price

## MODE-11: Unit Price



Unit Price: the unit price of the electricity

To set the unit price, please refer to the instructions in Part 3.

## Part 5. Specifications

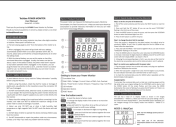
- Operating voltage AC 120V
- Operating Frequencys 60Hz
- Wide voltage range 110V-130V
- Load current Max 15A
- Maximum power 1800W (@120V)
- Resolution 0.IV, 0.001A, 0.IW
- Unit price settings 0.00 COST/KWH to 99.99COST/KWH
- Overload alarm setting maximum 1800W
- Electricity Consumption Alarm setting 1KWh-9999KWhs
- Cost Alarm setting 1Cost-9999Costs
- Working temperature o...:45C
- Voltage accuracy  $\pm 1\%$
- Current Accuracy  $\pm 2\%$
- Power Accuracy  $\pm 2\%$

To watch videos about this power meter, please subscribe to manufacturer YouTube Channel:

<https://www.youtube.com/c/MrTimerABC>

---

## Documents / Resources



[TechBee JK-PM04 Power Monitor](#) [pdf] User Manual  
JK-PM04 Power Monitor, JK-PM04, Power Monitor, Monitor

## References

- [User Manual](#)



This website is an independent publication and is neither affiliated with nor endorsed by any of the trademark owners. The "Bluetooth®" word mark and logos are registered trademarks owned by Bluetooth SIG, Inc. The "Wi-Fi®" word mark and logos are registered trademarks owned by the Wi-Fi Alliance. Any use of these marks on this website does not imply any affiliation with or endorsement.