



Techage TA-JA-PT815G-30W 3MP Wireless PTZ Camera Work on Eseecloud App Installation Guide

[Home](#) » [Techage](#) » Techage TA-JA-PT815G-30W 3MP Wireless PTZ Camera Work on Eseecloud App Installation Guide 

Contents

- [1 Techage TA-JA-PT815G-30W 3MP Wireless PTZ Camera Work on Eseecloud App](#)
- [2 Interface description](#)
- [3 Description](#)
- [4 Software Installation](#)
- [5 Wifi Configuration add process](#)
- [6 Direct Connection adding process](#)
- [7 The wired add configuration process](#)
- [8 Warning](#)
- [9 Documents / Resources](#)
- [10 Related Posts](#)

Techage

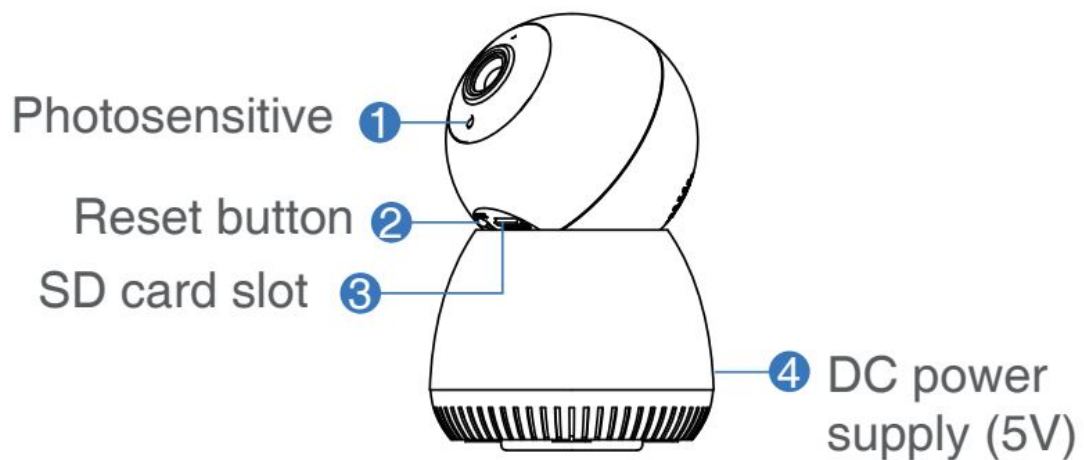
Techage TA-JA-PT815G-30W 3MP Wireless PTZ Camera Work on Eseecloud App



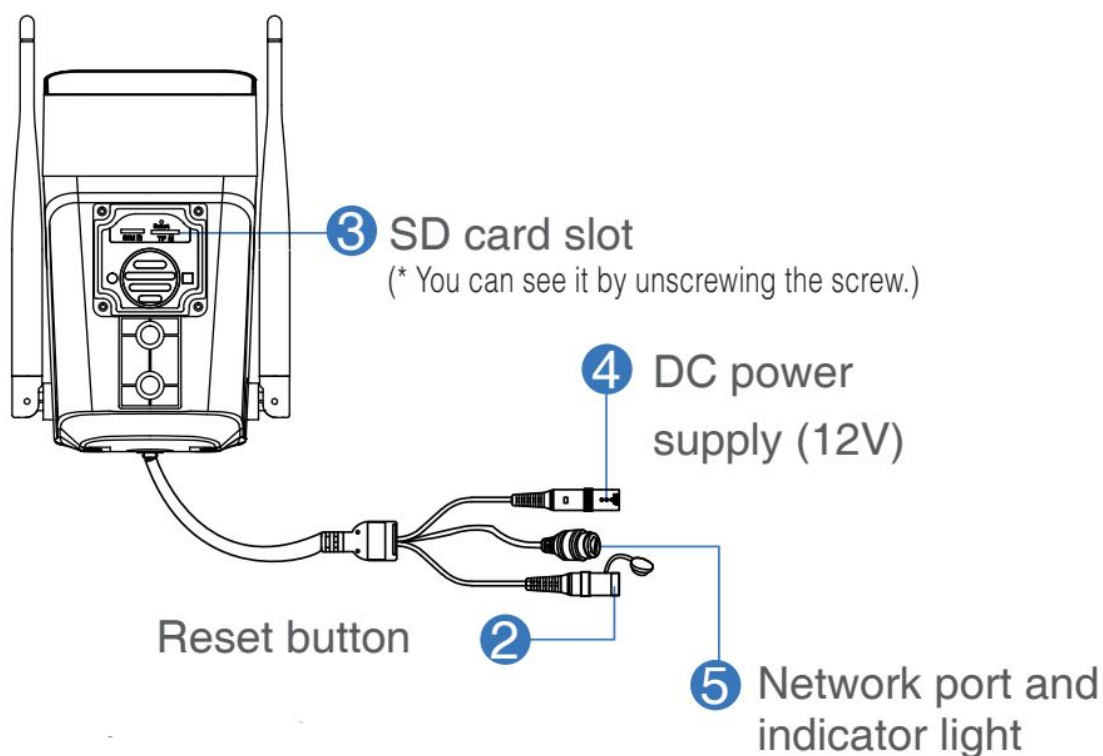
Interface description

This manual is suitable for various types of cameras. (The appearance may be different due to different batches. The details are subject to the receipt. This manual is only for the installation instructions of this series of equipment.)

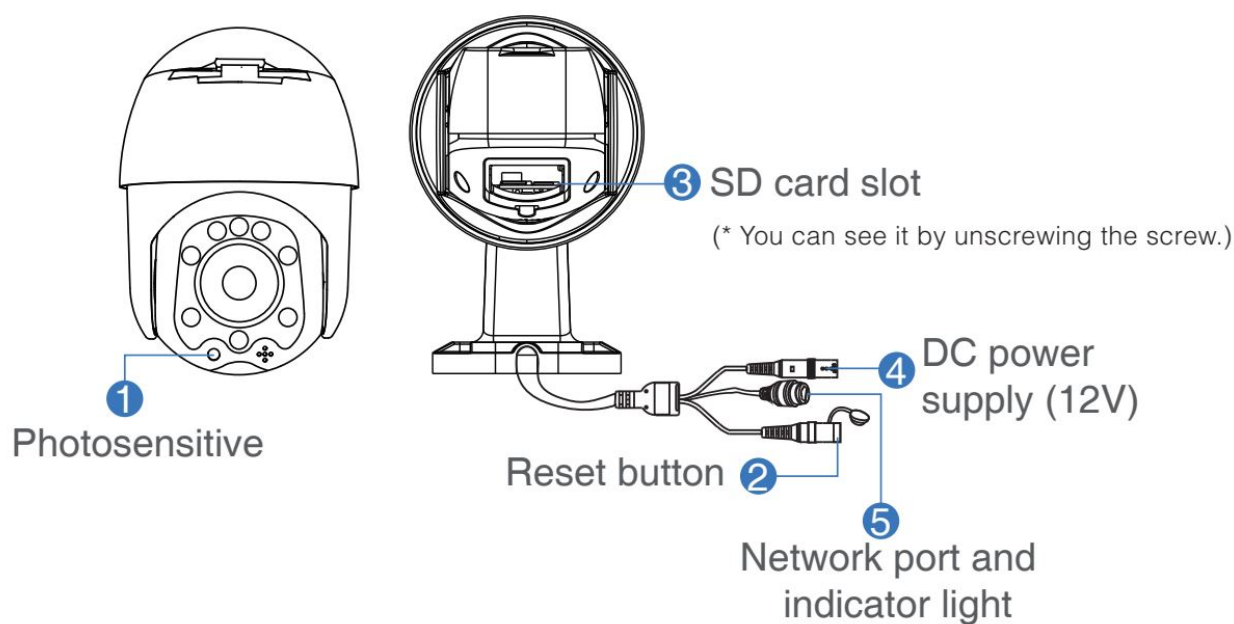
1. Wireless Pan-tilt IP Camera



2. WiFi Spot Light Camera



3. WiFi MINI Dome Cmaera



Description

- | | |
|-------------------------------------|--|
| 1. Photosensitive | Collect ambient luminosity value, turn on the infrared light when the current illuminance is less than 3 Lux. |
| 2. Reset button | The working state of the device, long press 3-5 seconds to restore the factory, the camera will have a voice prompt broadcast. |
| 3. SD card slot | TF card, storage video and playback video |
| 4. DC power supply | Power input |
| 5. Network port and indicator light | Connect the Lan cable and check the current device status indicator light (flashes once /1 s on hotspot mode). |

Software Installation

APP Download and Installation

Users can search “EseeCloud” on APP store or “IP PRO” on Google Play, or scan the QR code below to install the APP.



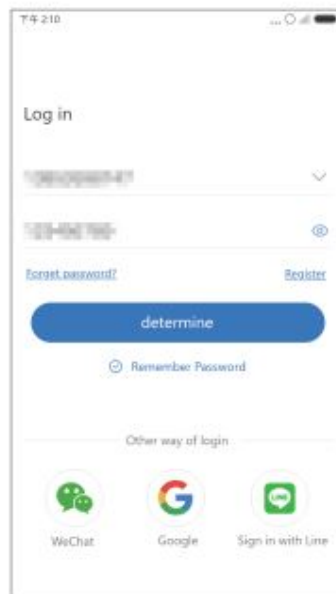
EseeCloud APP



APP download

Note: For iOS system, it requires iOS 9.0 version or above. For Android, Android 5.1 or above.

Account login



Account login: On the login interface, enter the account/phone number/email, and the corresponding password, and click the “OK” button to log in. Third-party login: APP supports third-party login. Click the third-party social software icon, jump to the APP to complete the authorization and log in.

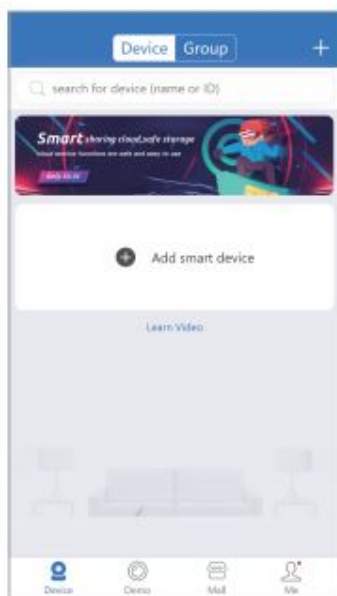
Wifi Configuration add process

Add WIFI mode (optional)

1. Power on the device, wait for the indicator light to flash slowly, connect to the IPCXXX hotspot in the phone settings, the password is 11111111;



2. Open the APP and click on the “+” in the upper right corner to enter the scan code interface;



3. Scan the QR code on the device ;



4. On the search device interface, click “Add”;

5. To view and use via WiFi or other networks, please select Remote View; If there is no network, if you connect

to the camera at close range, please select local Direct Connection;



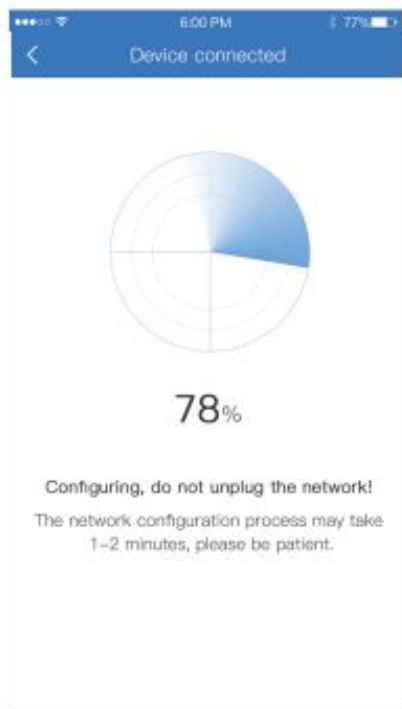
Remote View adding process

1. Select “Remote View”

to add, connect the device to WiFi, select the correct WiFi, enter the password, and click Confirm;



2. Please wait patiently during the device configuration network;



3. The device is successfully added, please set a name and password for the device.

Direct Connection adding process

Select "Direct Connection" to add, and set the name and password for the device to add successfully;

Note: The Direct Connection needs to be connected to the device hotspot to preview the device screen normally.

When the QR code of the device cannot be found (or the scan code is unsuccessful)

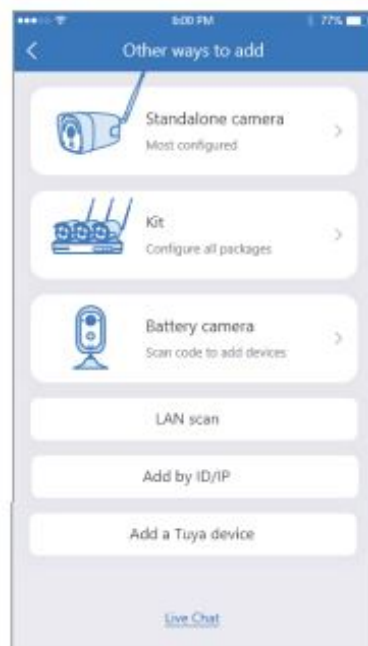
1. Connect to the IPCXXX hotspot in the phone settings, the password is 11111111;



2. Click "Other ways to add" on the scan code interface;

3. Select the wireless standalone camera, and the subsequent adding process is the same as the process of steps

“Remote View ” and ” Direct Connection “;



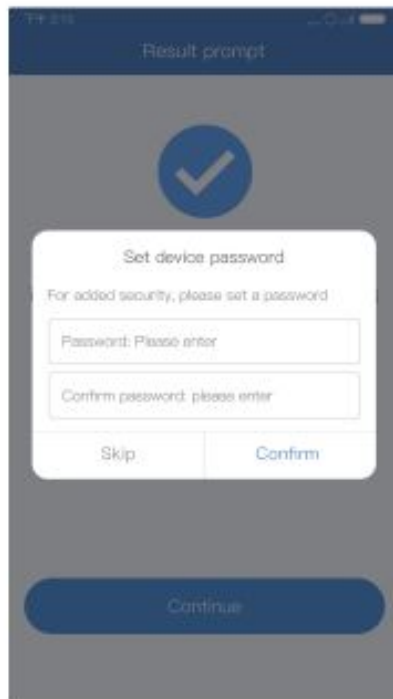
The wired add configuration process

Adding method 1

1. Power on the device, connect it to a router with internet access with a network cable, scan the QR code of the device, and click “Add”;

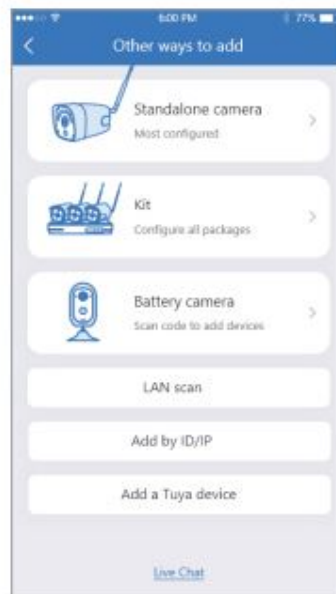


2. After setting the name and password for the device, it can be added successfully.



Adding method 2

1. Select "Add by ID/IP" in "Other ways to add";
- 2.



Enter the device ID and password, and click Finish in the upper right corner to add successfully.

6:00 PM 77%

< ADD by ID Complete

Cloud ID

Device name Device 1

User name admin

Password Input device password

[IP/DCNS add](#)

Adding method 3

1. When the mobile phone and the device are on the same network, select LAN scan in “Other ways to add”;

7:21 77%

< Search device

search device

Device 919024271 Add

Device 919024272 Add

Device 919024273 Add

Device 919024273 Add

2. After searching for the device, click Add, enter the device password to complete the addition.



Warning

1. In case of fire or lightning, pls don't put product in damp and rainy place, operate or maintain according to the user manual.
2. Be careful when you see an attachment with a Dangerous Voltage that might cause serious electric accident.
3. In case of electric shock and fire, pls don't use power supply beyond power list in user manual
4. To reduce electric shock, unprofessional people please don't open product front panel or rear panel

Notice

1. Ensure your equity, pls read the user manual carefully before you use the product
2. Pls contact professional people if you need install and maintain the product
3. Working Environment: temperature of -20°C~+60°C, relative humidity under 85%
4. Pls don't exceed the user manual's standard range of temperature, humidity and voltage.

Documents / Resources

	Techage TA-JA-PT815G-30W 3MP Wireless PTZ Camera Work on Eseecloud App [pdf] Installation Guide TA-JA-PT815G-30W, 3MP Wireless PTZ Camera Work on Eseecloud App
--	--