



TECH USB Bluetooth 5.0 Dongle User Manual

[Home](#) » [TECH](#) » TECH USB Bluetooth 5.0 Dongle User Manual 



Contents

- [1 USB Bluetooth 5.0 Dongle](#)
- [2 INSTALLATION](#)
- [3 SYSTEM REQUIREMENT](#)
- [4 INSTALLING DRIVERS FROM THE CD](#)
- [5 PAIR YOUR DEVICES](#)
- [6 SAFETY PRECAUTIONS](#)
- [7 MAINTENANCE:](#)
- [8 Documents / Resources](#)
 - [8.1 References](#)
- [9 Related Posts](#)

USB Bluetooth 5.0 Dongle

EASY SETUP

- STEP 1 – Install the software with the included CD
- STEP 2 – Plug the USB wireless adapter into pc/laptop port
- STEP 3 – Scan for the available networks and connect to complete the setup

INSTALLATION

To avoid software confliction, please uninstall any previously installed third-party Bluetooth drivers or managements software on your computer before installing the Bluetooth driver software.
The Default Bluetooth drivers provided by Microsoft Windows have limited functionality, it will installed automatically after you inserting the USB adapter, you still need to install the full driver software on CD if you want

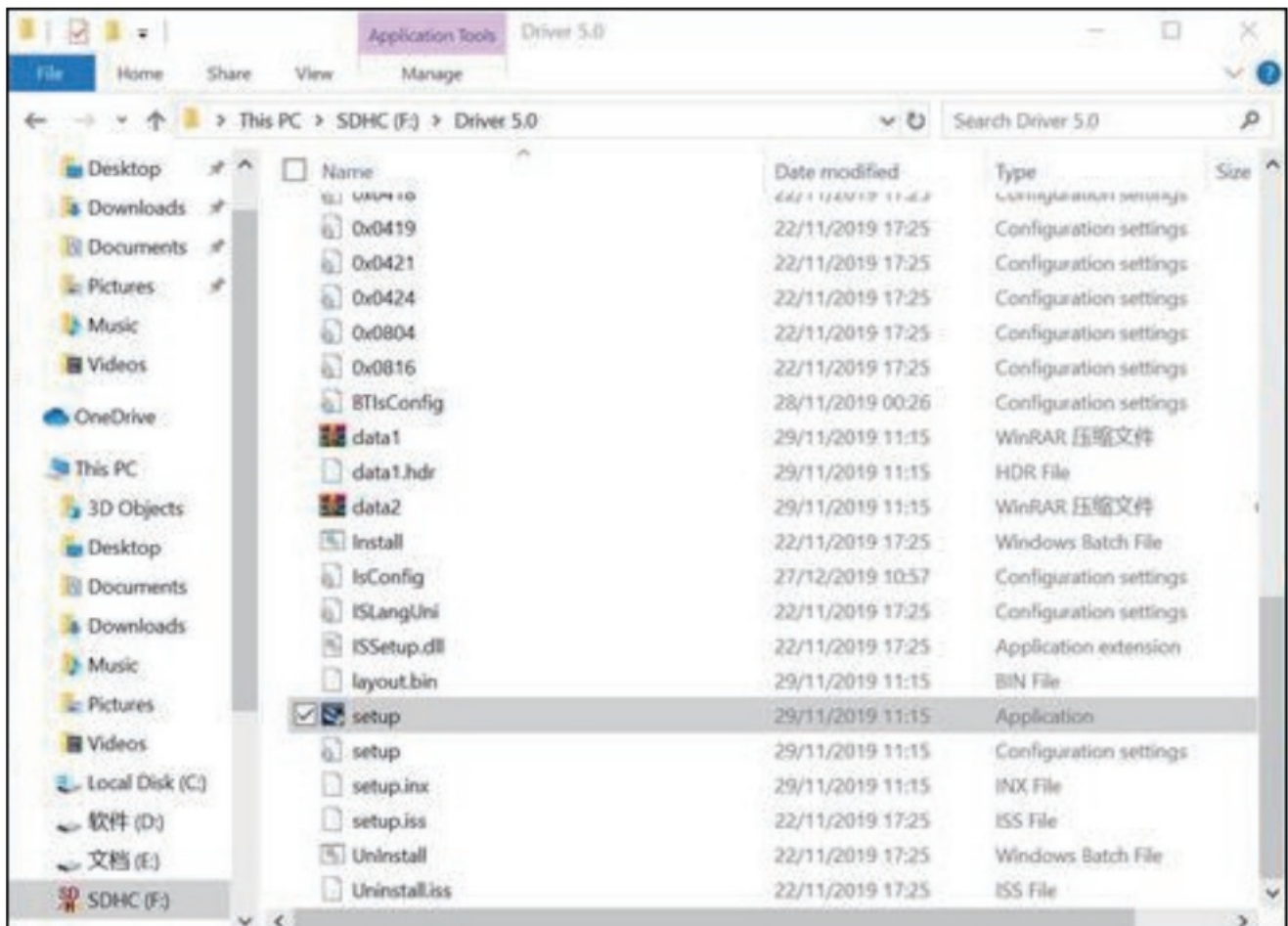
to access full functionality (more Bluetooth profiles supported).

SYSTEM REQUIREMENT

- Supported Operating System: Windows 7/8/10 (32/64 bit)
- CPU Speed: 500MHz or higher
- Hard Driver Space: 500 MB
- RAM: 1GB or more

INSTALLING DRIVERS FROM THE CD

Connect Bluetooth adapter to computer, open the CD Windows Explorer and run Setup.exe under Windows folder.

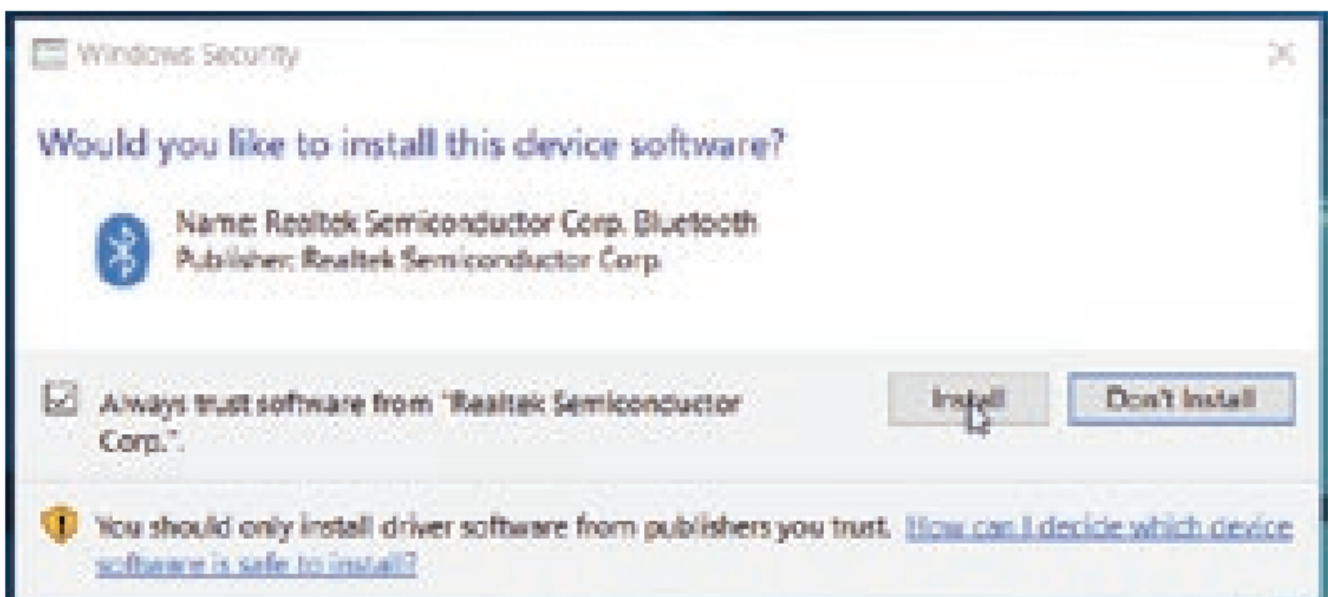


AUTO INSTALLATION PROGRAM

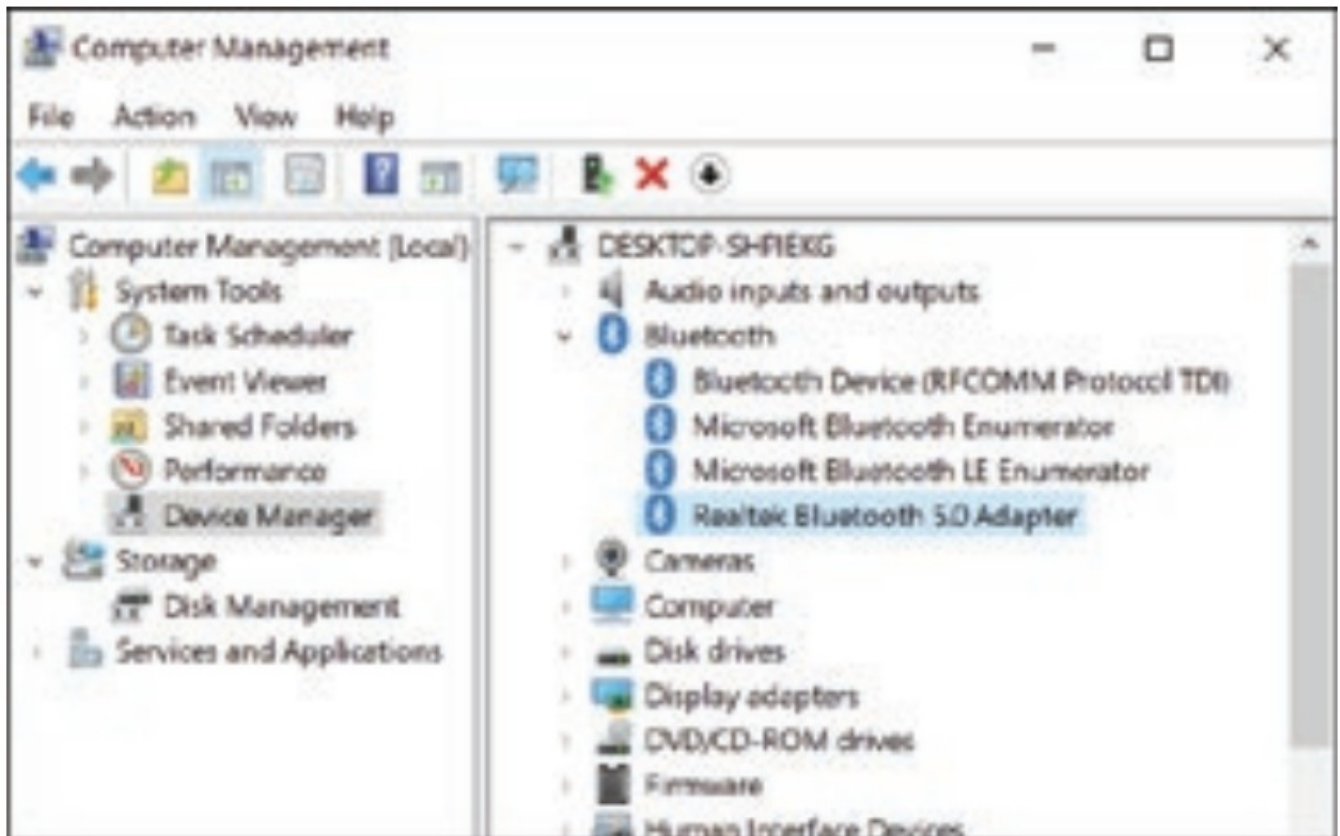
Click "Next" to start installation



Click "Install" if there is a Warning window, check "Always Trust software from Realtek Semiconductor Corp", you need to restart the computer after installation finished.

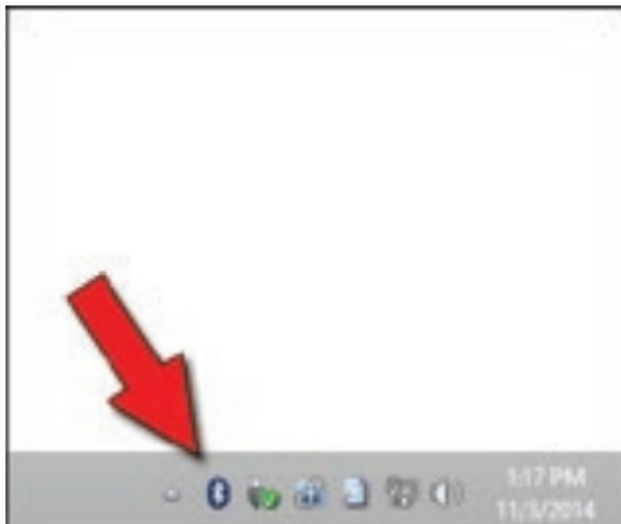


You will find "Realtek Bluetooth 5.0 Adapter" under Device Manager after driver software installed successfully.

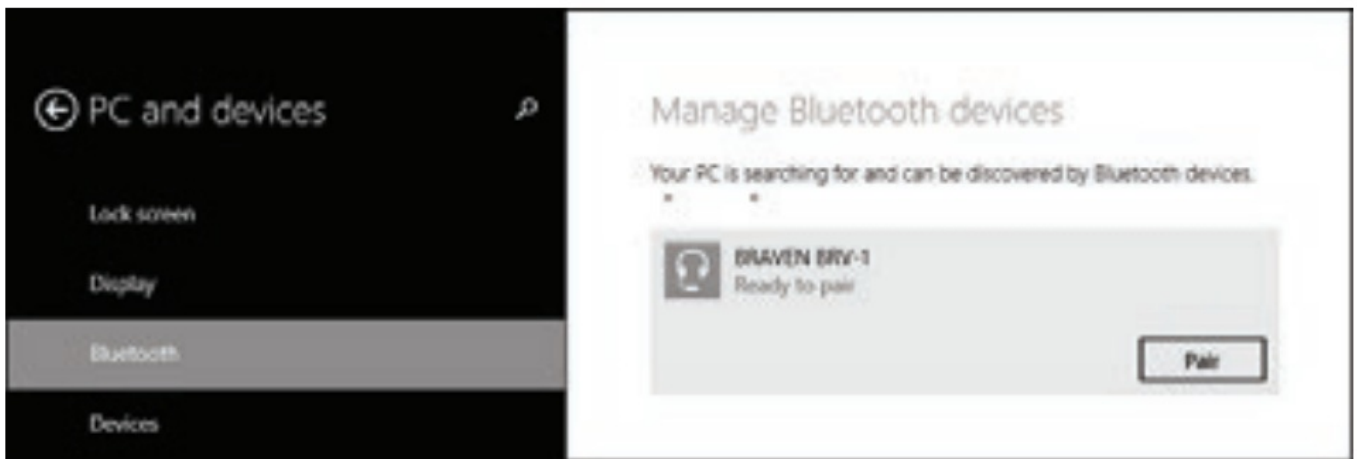


PAIR YOUR DEVICES

The Bluetooth icon should appear in the system tray after driver installed. Right-click the icon and choose “Add a Bluetooth Device” from the context menu.

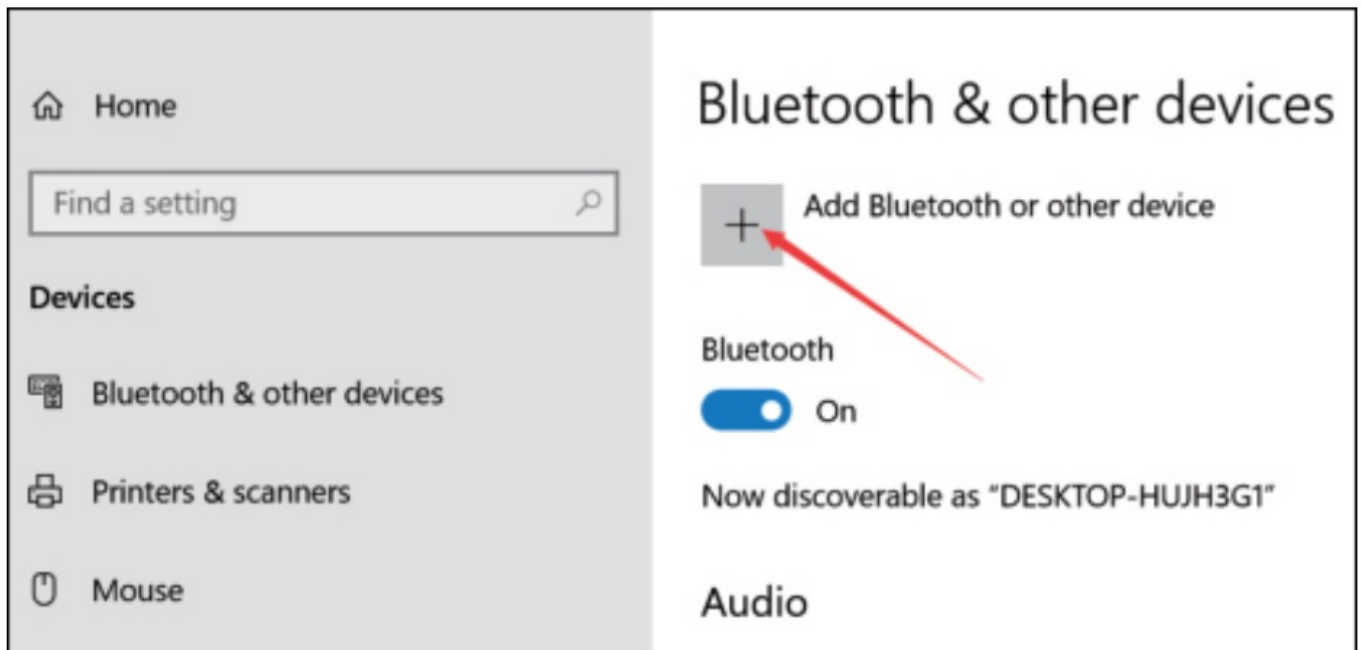


If you're using Windows 8 or 10, you'll see a screen like below. Just click the “Pair” button for the device you want to connect.



If you're using Windows 7, you'll see a similar screen, select the device you want to connect and then click "Next".
PAIRING A DEVICE THAT DOESN'T SHOW UP AUTOMATICALLY

If for some reason your device doesn't appear below, click the "Add Bluetooth or Other Device" button located at the top of the Settings window.



SAFETY PRECAUTIONS



ATTENZIONE
RISCHIO DI SCOSSE ELETTRICHE
NON APRIRE

To reduce risk of electric shock, this product should **ONLY** be opened by an authorized technician when service is required.

Disconnect the product from mains and other equipment if a problem should occur. Do not expose the product to water or moisture.

MAINTENANCE:

Clean only with a dry cloth. Do not use cleaning solvents or abrasives.

WARRANTY:

No guarantee or liability can be accepted for any changes and modifications of the product or damage caused due to incorrect use of this product.



This product is marked with this symbol. It means that used electrical and electronic products should not be mixed with general household waste.

There is a separate collections system for these products in compliance with EU Directive WEEE.



With the CE sign, Techly® ensures that the product is conformed to the basic European standards and

directives.

All rights reserved. All trademarks and trade names are those of their respective owners. TECHLY® – Viale Europa 33 – 33077 Sacile (PN) – Italy

WWW.TECHLY.COM

Documents / Resources

	<p>TECH USB Bluetooth 5.0 Dongle [pdf] User Manual</p> <p>USB Bluetooth 5.0 Dongle, USB Bluetooth Dongle, Bluetooth 5.0 Dongle, USB Dongle, Dongle</p>
---	---

References

-  [TV Brackets, Audio Video HDMI, Networking | TECHLY](#)

[Manuals+.](#)