

Tech Support Epilog Helix and Mini 24 Laser Cutting and Engraving Machine



# Tech Support Epilog Helix and Mini 24 Laser Cutting and Engraving Machine Installation Guide

[Home](#) » [Tech Support](#) » Tech Support Epilog Helix and Mini 24 Laser Cutting and Engraving Machine Installation Guide 

## Contents

- 1 Tech Support Epilog Helix and Mini 24 Laser Cutting and Engraving Machine
- 2 Ethernet Adapter/Port Setup
- 3 Installing the Driver
- 4 Documents / Resources
  - 4.1 References



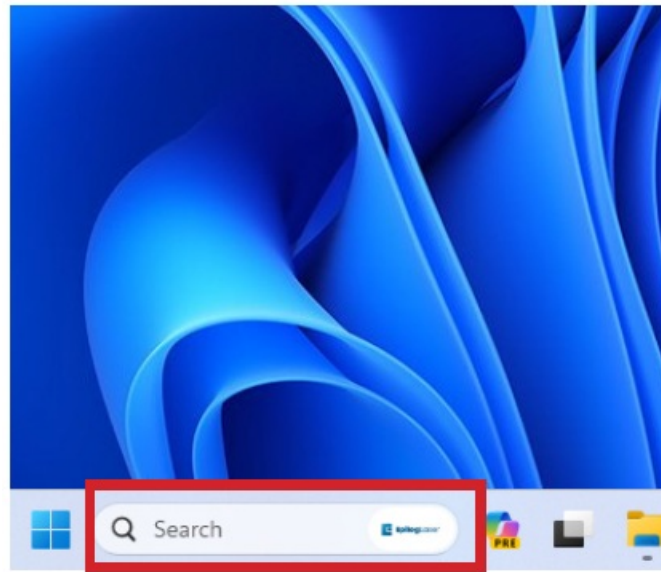
## Tech Support Epilog Helix and Mini 24 Laser Cutting and Engraving Machine



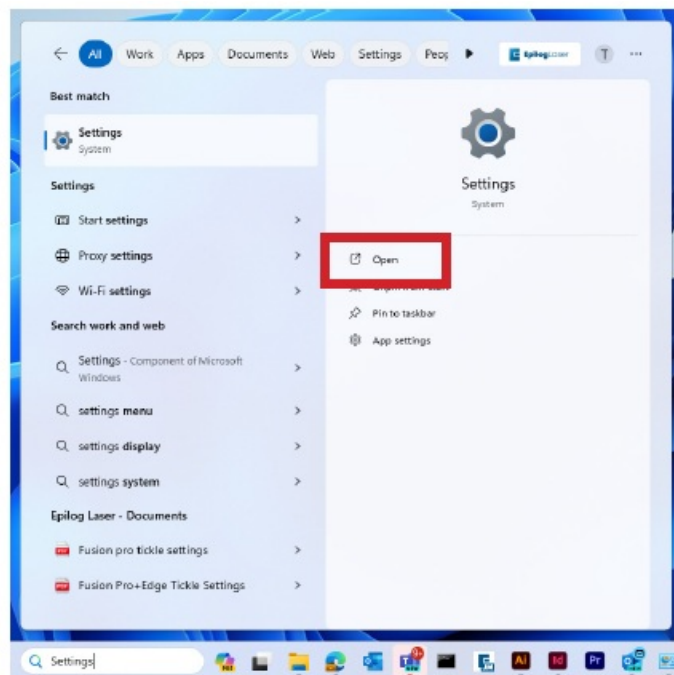
Before beginning, connect the laser to your computer with an Ethernet cable and turn the machine on.

## Ethernet Adapter/Port Setup

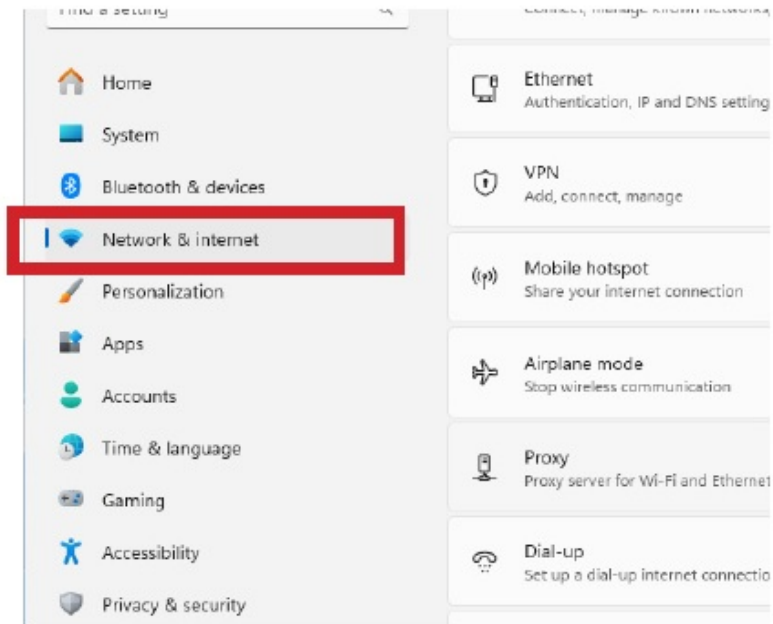
1. In the search bar at the bottom of the screen, type Settings.



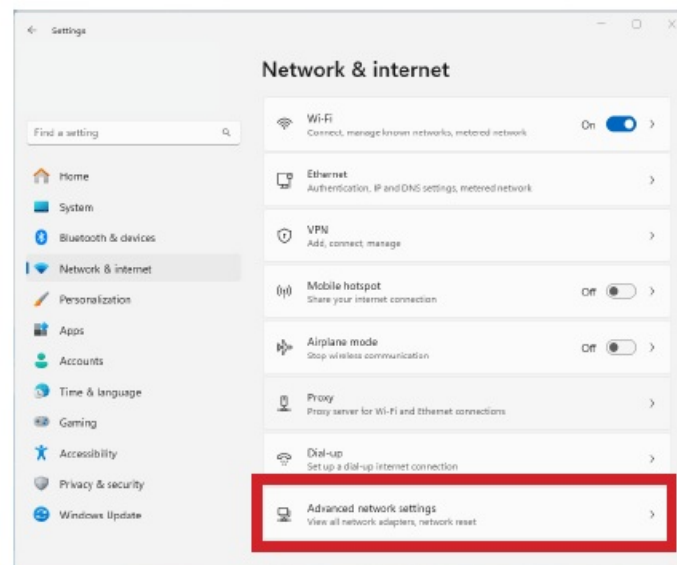
2. Click Open.



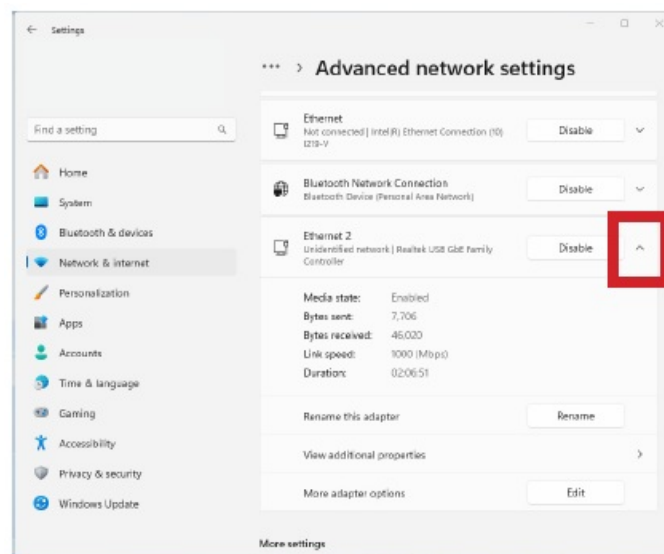
3. Click Network and Internet.



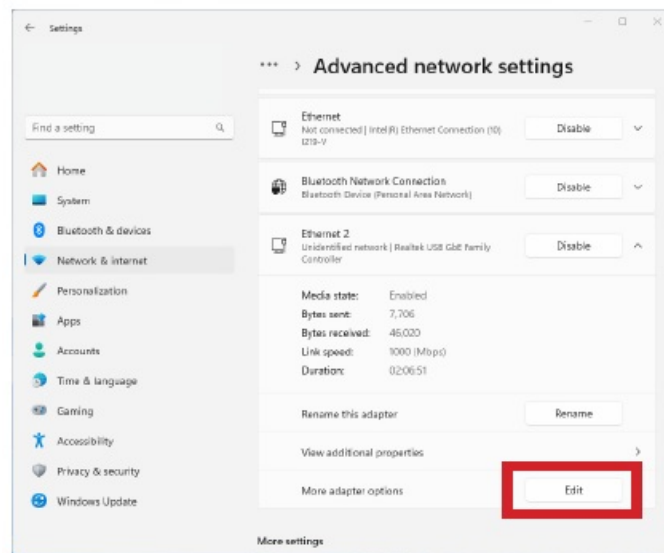
4. Click Advanced Network Settings.



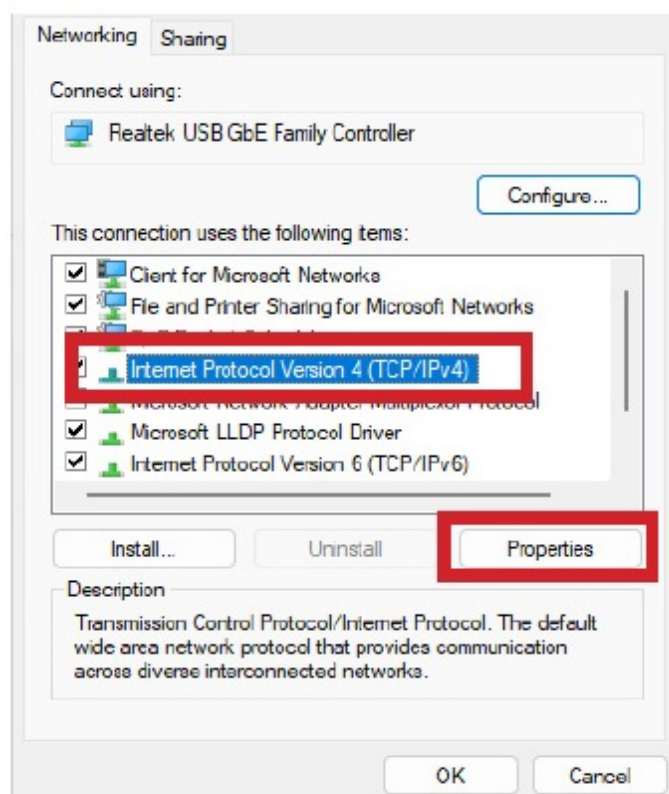
5. Select the drop down arrow next to the lasers Ethernet connection. It will often say unidentified network.



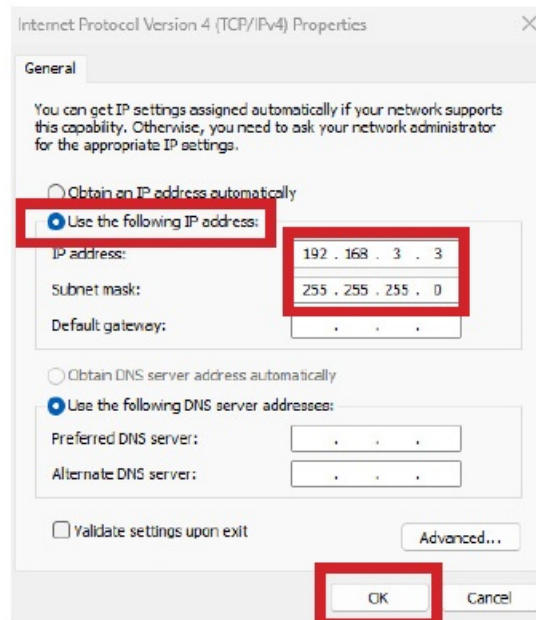
6. Next to More adapter settings, click Edit.



7. Select Internet Protocol Version 4 (TCP/IP), then click Properties.



8. Select Use the Following IP address. Type 192.168.3.3 into the IP address. The last digit of this IP address will be different from the IP address of the laser.

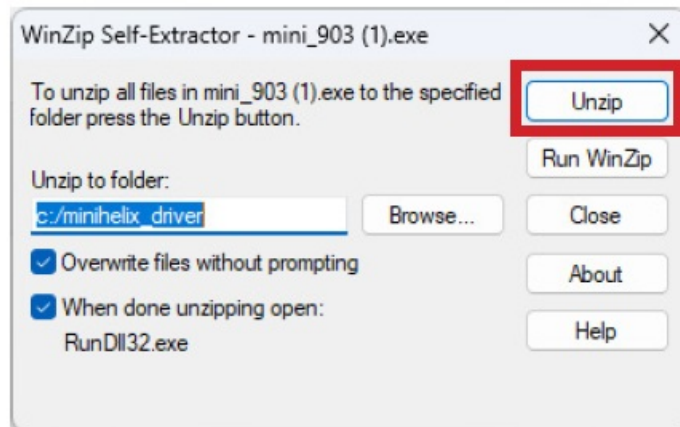


9. Click the Subnet Mask field. It will auto-populate with 255.255.255.0.
10. Then click OK.

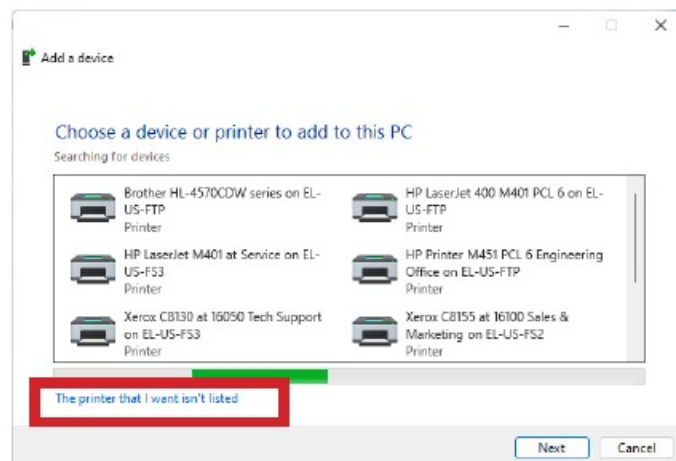
## Installing the Driver

This guide is for Ethernet installation of the Mini/Helix, Zing, EXT, and older Fusion/M2 drivers.

1. Download the Driver from <https://www.epiloglaser.com/tech-support/drivers/>
2. Open the downloaded file and click unzip.

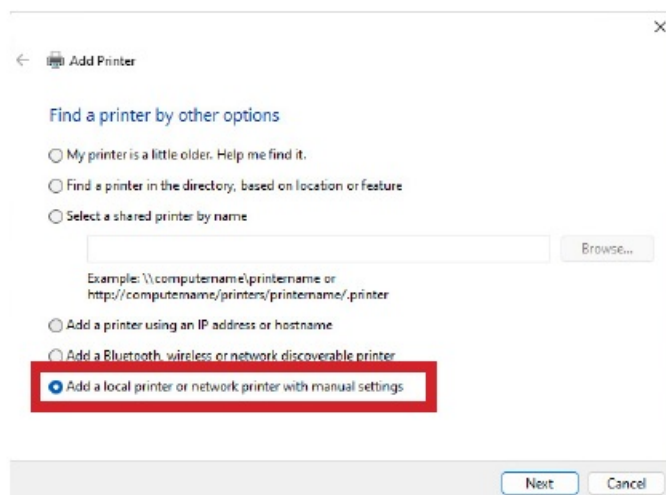


3. The Add a Device window will open up. Click The printer that I want isn't listed.

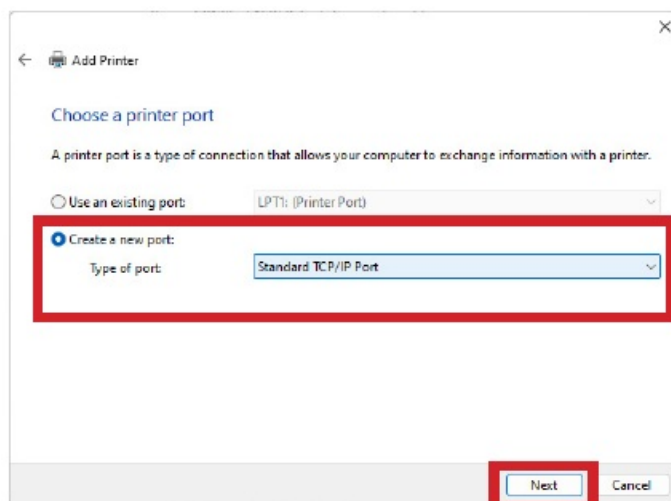


To manually launch, open Settings / Blue-tooth and Devices / Printers and Scanners / Add a device / The printer I want isn't listed.

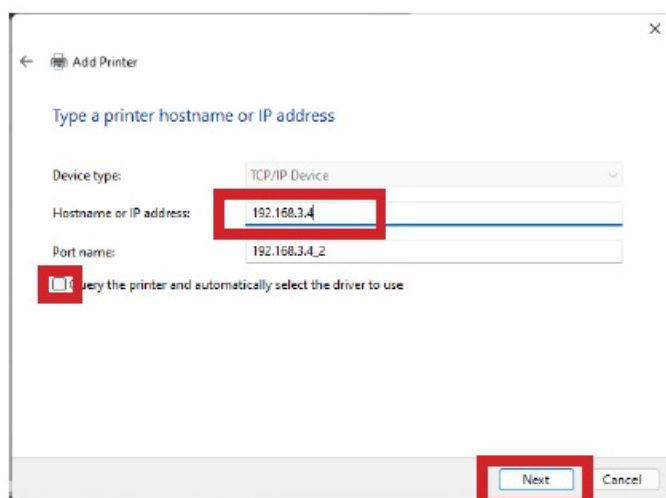
4. Select Add a local printer or network printer with manual settings.



5. Select Create a new port. From the drop down menu, select Standard TCP/IP Port. Click Next.

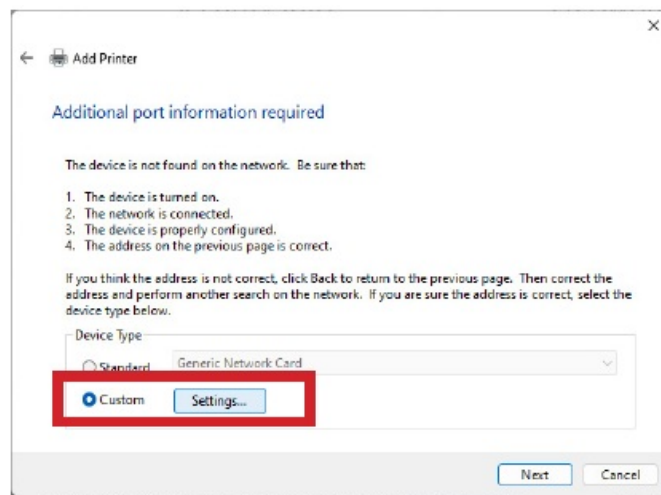


6. Deselect Query the printer. Enter the IP address of the laser. The default address is 192.168.3.4. Then click Next.

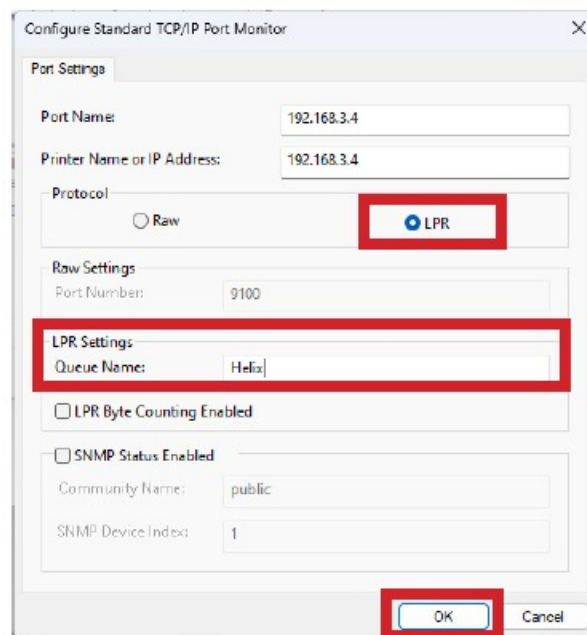


If you don't know the IP address of the laser please refer to the Laser System Manual.

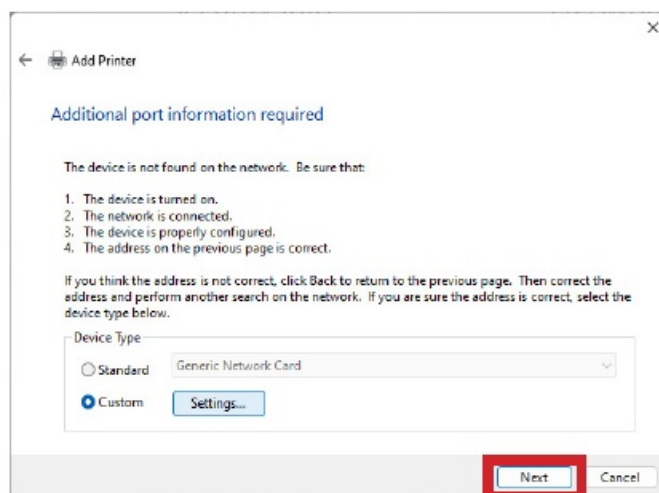
7. Select Custom and click Settings.



8. Select LPR protocol. Enter the machine model in Queue Name. Click OK.

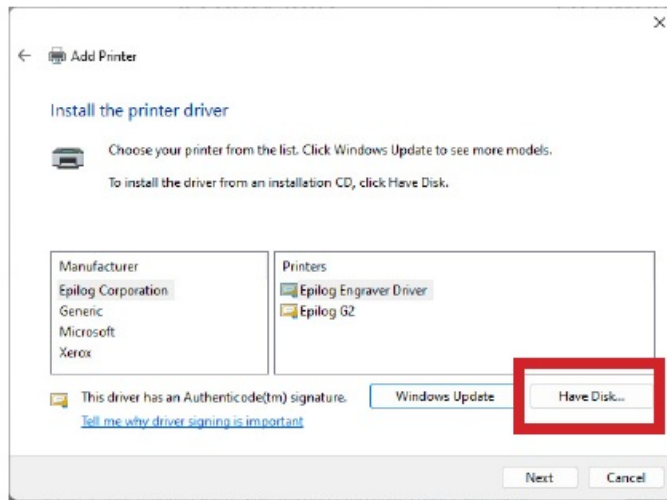


9. Click Next.

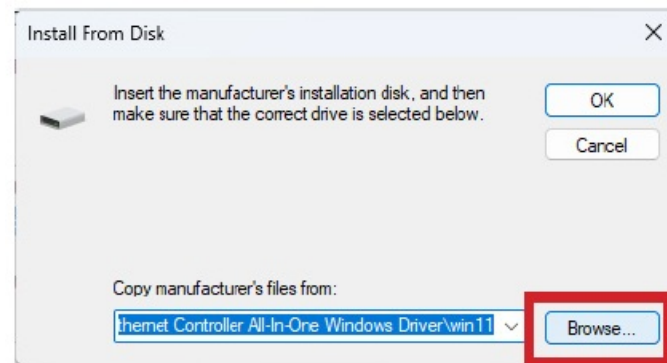


10. Click Have Disk.

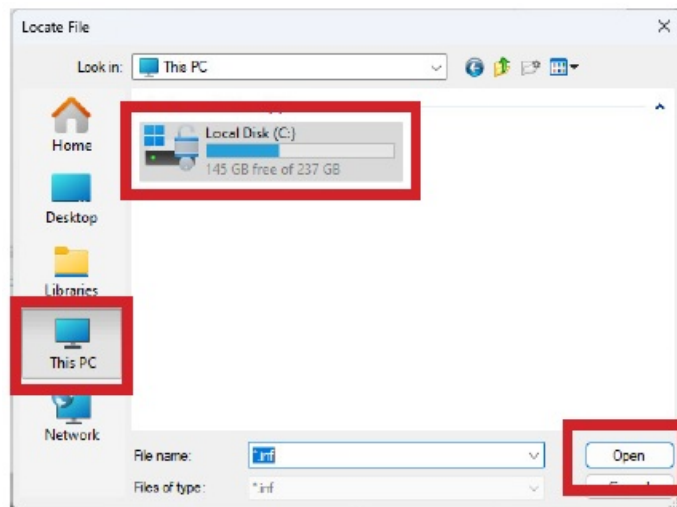




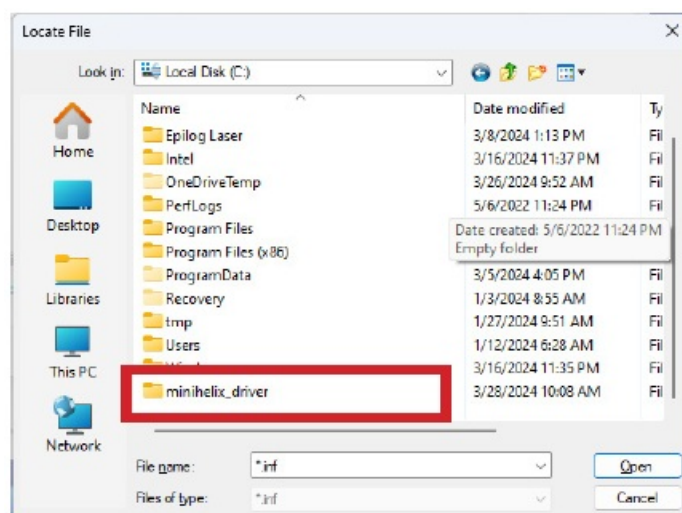
11. Click Browse.



12. Click This PC, Local Disk (C:), Open.

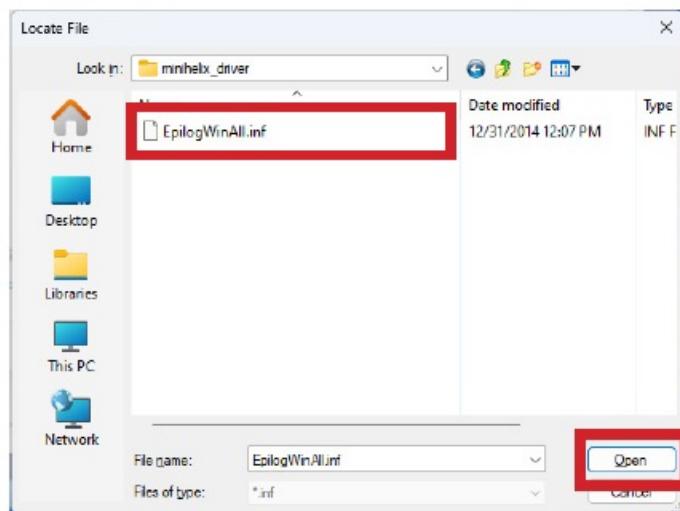


13. Open the driver file for your machine.

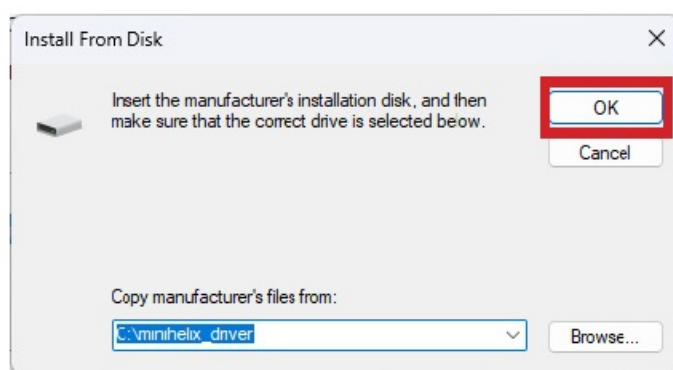




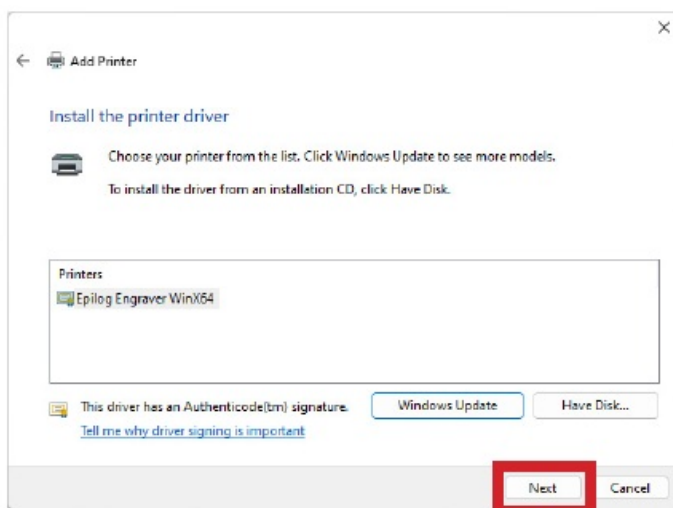
14. Select the .inf file and click Open.



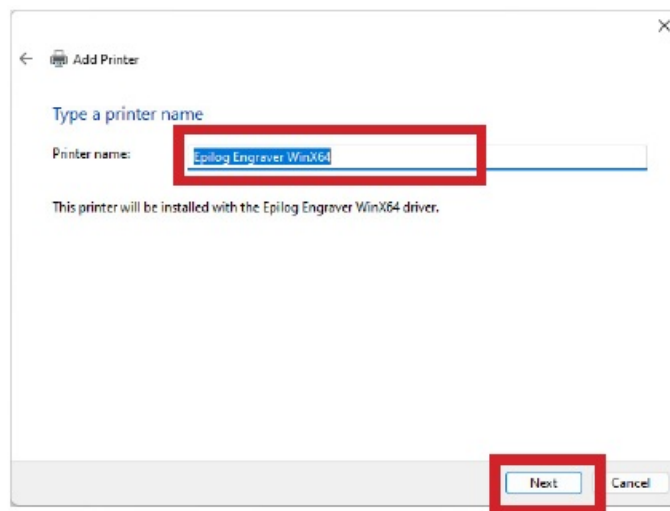
15. Click OK.



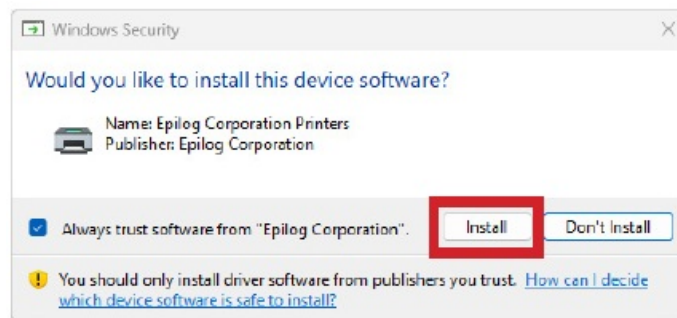
16. Click Next.



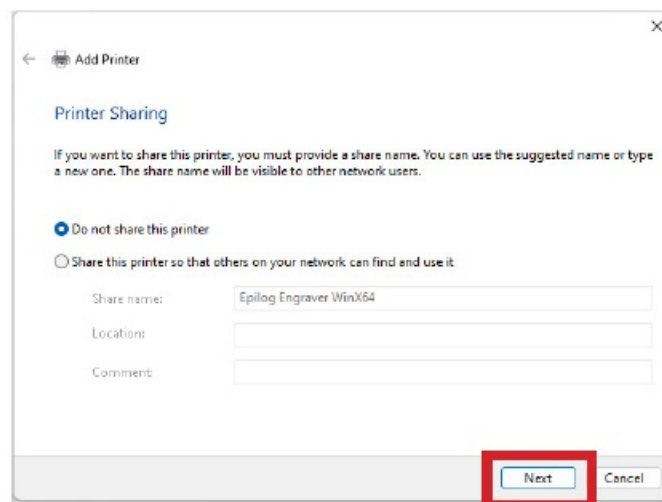
17. Name the printer or leave the default name and click Next.



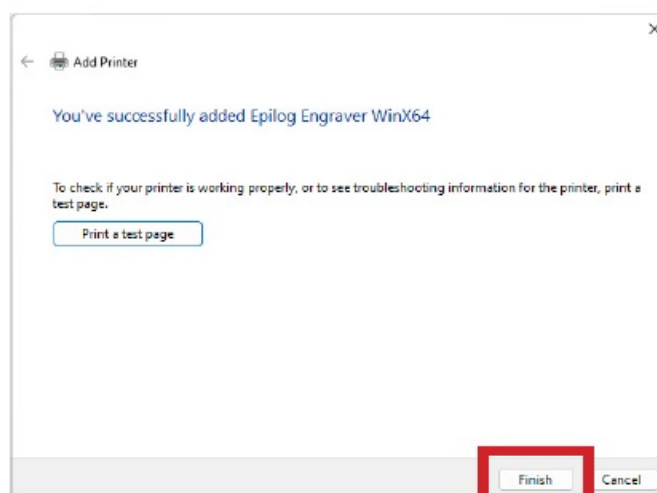
18. Click Install.



19. Leave Do not share this printer selected and click Next.



20. Click Finish.



You have now completed the Ethernet installation of your Legacy Driver.


### Unable to send a job to the machine?

- Verify the IP address of the laser matches what was entered during driver installation.
- Make sure the USB is NOT connected.
- Test your Ethernet cable.

Further support is available at <https://www.epiloglaser.com/tech-support/technical-support/>

---

## Documents / Resources

	<p><a href="#">Tech Support Epilog Helix and Mini 24 Laser Cutting and Engraving Machine</a> [pdf] Installat ion Guide Epilog Helix and Mini 24 Laser Cutting and Engraving Machine, Helix and Mini 24 Laser Cutting and Engraving Machine, 24 Laser Cutting and Engraving Machine, Cutting and Engraving Mach ine, Engraving Machine, Machine</p>
--	--

## References

- [User Manual](#)

[Manuals+](#), [Privacy Policy](#)

This website is an independent publication and is neither affiliated with nor endorsed by any of the trademark owners. The "Bluetooth®" word mark and logos are registered trademarks owned by Bluetooth SIG, Inc. The "Wi-Fi®" word mark and logos are registered trademarks owned by the Wi-Fi Alliance. Any use of these marks on this website does not imply any affiliation with or endorsement.