



# TECH DIGITAL JTD-611V3 200 Wireless HDMI Extender User Manual

[Home](#) » [TECH DIGITAL](#) » TECH DIGITAL JTD-611V3 200 Wireless HDMI Extender User Manual 



## User Manual



## Contents

[1 Dear Customer](#)

[2 FEATURES:](#)

[3 PACKAGE CONTENTS:](#)

[4 FEATURES OF THE INTERFACE:](#)

[5 OPERATION AND](#)

[CONNECTION:](#)

[6 Panel key operation](#)

[instructions:](#)

[7 SPECIFICATIONS :](#)

[8 Notes:](#)

[9 FAQ :](#)

[10 Documents / Resources](#)

[11 Related Posts](#)

## Dear Customer

Thank you for purchasing this product. For optimum performance and safety, please read these instructions carefully before connecting, operating, or adjusting this product. Please keep this manual for future reference.

J-Tech Digital products are designed to make your A/V device use more convenient, comfortable, and productive.

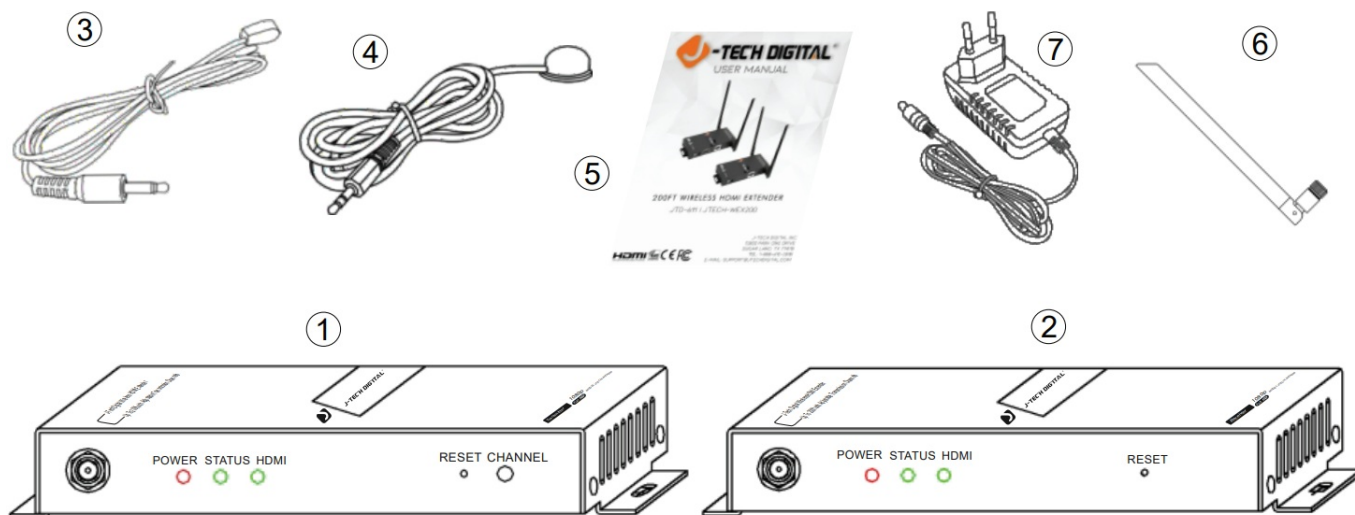
The J-Tech Digital JTECH-WEX200 wireless HDMI extender allows the user to extend HD Audio & Video HDMI signals wirelessly up to 200feet away to an HD-capable display. The extender follows the TCP / IP standard Wireless Transport Protocol, so it has a high transmission rate and strong anti-interference capability. The JTECH-WEX200 also supports HDMI mirror output and infrared remote-control extension.

The JTECH-WEX200 is widely applicable to office presentations, lectures, education, conferences, residential entertainment, and more.

## FEATURES:

- One TX can be paired with up to two JTECH-WEX200 receivers
- The transmitter features a local HDMI output port for local display
- Supports HDMI resolutions: 480P – 1080P@50/60Hz and SVGA – WUXGA
- Utilizes the 5G ISM frequency band for high-transmission data rate and anti-interference capabilities
- Uses two external dual-gain antennas. Full HD 1080p transmits up to 60 meters wirelessly in open space.  
(Maybe affected by the use environment)
- Extends wide-band infrared remote to control source device from the display side
- Supports OSD for easy access to device status
- Simple Plug and Play installation, no software required
- Includes web configuration interface

## PACKAGE CONTENTS:



1. HDMI Wireless Transmitter 1pc
2. HDMI Wireless Receiver 1pc
3. IR Transmitter cable 1pc
4. IR Receiver cable 1pc
5. User manual 1pc
6. DC power adapter 2pcs
7. Antenna 4pcs

## FEATURES OF THE INTERFACE:

### Transmitter (TX)

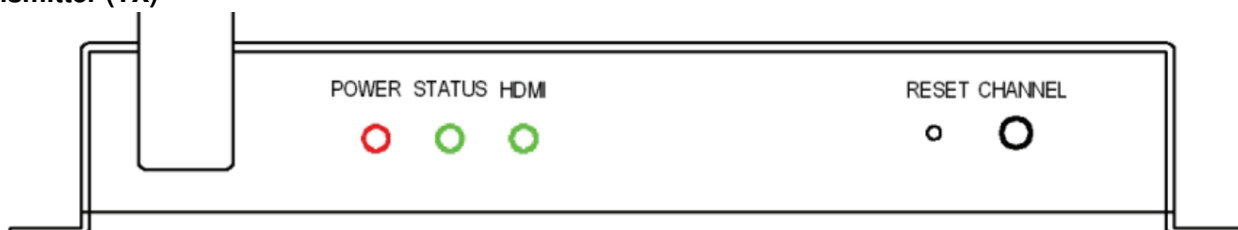


FIG.1 TX Front Panel View



FIG.2 TX Rear Panel View

POWER: Power indicator  
 STATUS: System status indicator  
 HDMI: HDMI input/output status indicator  
 RESET: Factory Reset Button  
 CHANNEL: Wireless channel switch button  
 DC12V: 12V DC-in jack  
 IR OUT: Port for IR transmitter cable

HDMI IN: HDMI input port  
HDMI OUT: HDMI loop output port

#### Receiver (RX)

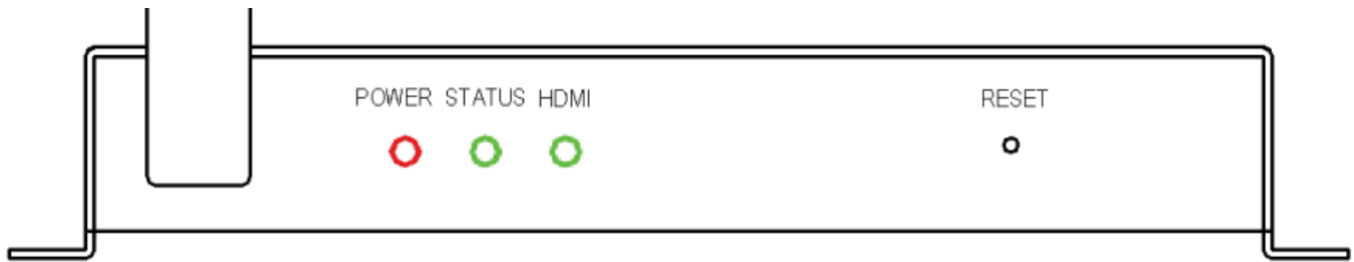


FIG.3 RX Front Panel View

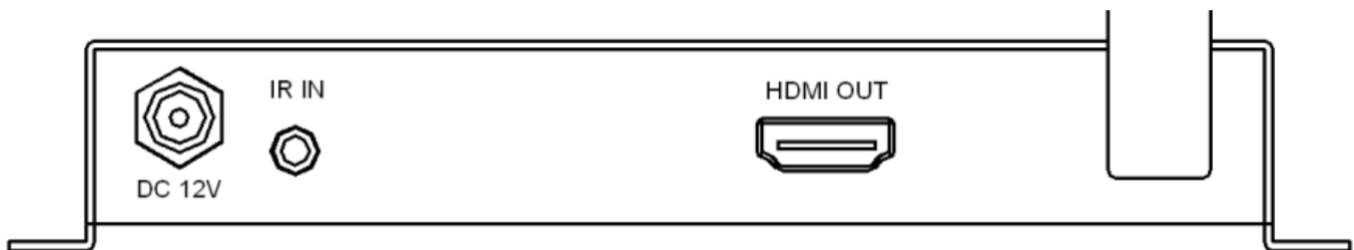
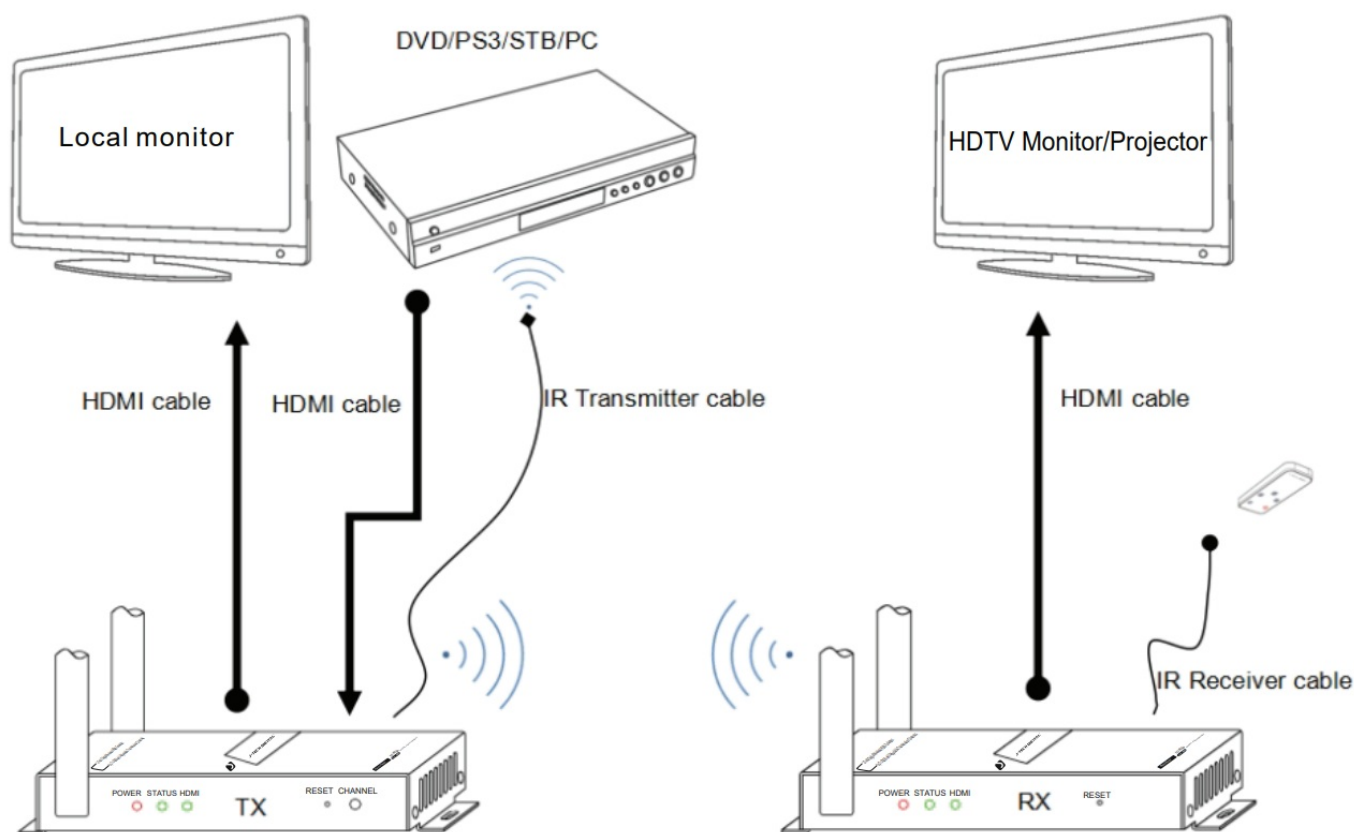


FIG.4 RX Rear Panel View

POWER: Power indicator  
STATUS: System status indicator  
HDMI: HDMI input/output status indicator  
RESET: Factory Reset Button  
DC12V: 12V DC-in jack  
IR IN: Port for IR receiver cable  
HDMI OUT: HDMI output port

#### OPERATION AND CONNECTION:

1. Connect one HDMI cable from the HDMI source device (set-top box, DVD player, streaming device) into the HDMI input port of the HDMI wireless TX.
2. Connect one HDMI cable from the TV/Monitor into the HDMI output port of the HDMI wireless RX.
3. Connect the IR Transmitter cable to the HDMI wireless TX's IR Out Port and the IR Transmitter cable must face the source device's infrared eye/sensor.
4. Connect IR Receiver cable to the HDMI wireless RX's IR In Port.
5. Connect 12V power supplies to the TX & RX, the POWER indicator will be illuminated when done successfully.
6. The extenders will automatically pair after being powered on. The STATUS indicator of TX and RX will be illuminated when the connection is successful. If the HDMI input or output signal is normal, the HDMI indicator light will also be illuminated. The STATUS indicator flashes continuously during normal transmission.
7. If you are using multiple receivers, all receivers will be connected in the same way.



### Panel key operation instructions:

1. Changing Wireless Channel: Press the "CHANNEL" key on the front panel of TX to cycle through multiple 5GHz wireless channels.

If the product works unsteadily or the picture is intermittent, please try a different channel.

2. Restore Factory Setting: Press and hold the RESET button for three seconds. The HDMI Status LED will flash three times and the device will restart. The OSD will show that Restore Factory Set is successful.

The Factory Reset Button is located at the bottom of the RESET hole found on the transmitter and receiver. Perform factory reset while the device is powered on. The user will need to use a long and slim stick like a paper clip to press the RESET button.

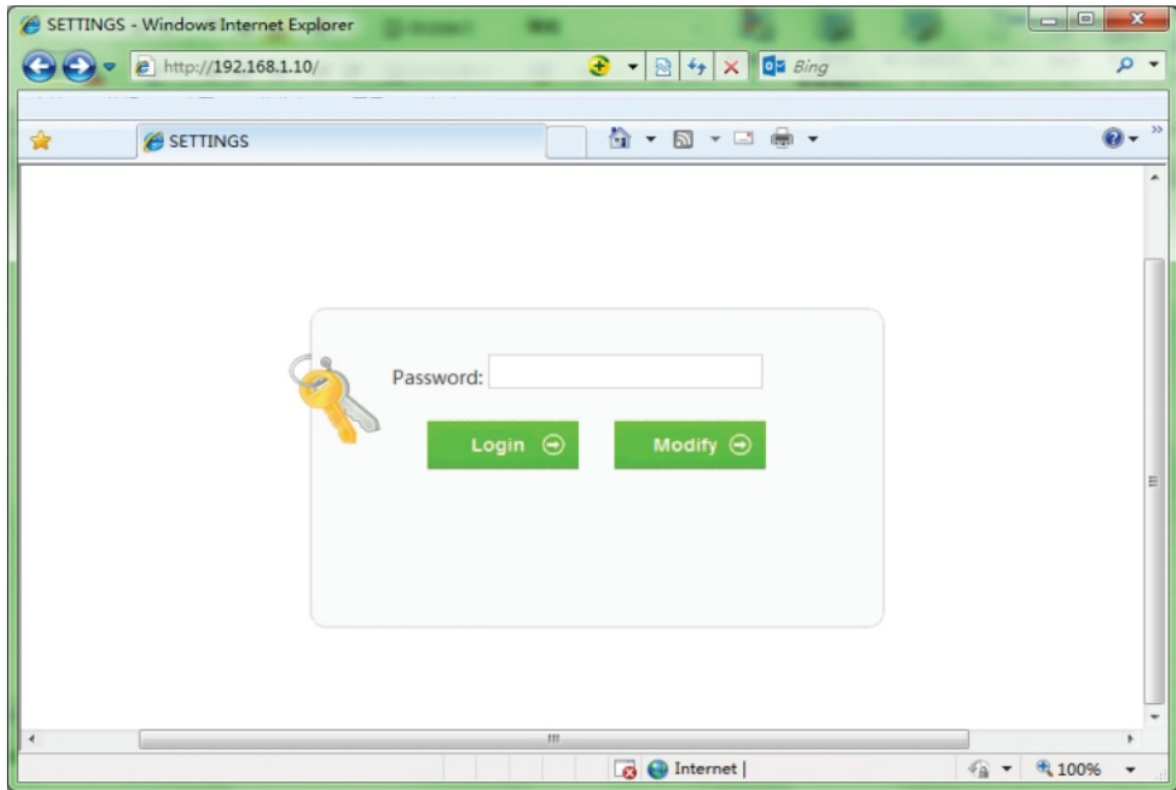
**Note:** You must reset the transmitter and all receivers before they can be used again.

To prevent interference caused by a device using the same frequency, the Wireless HDMI Extender supports the set-up and adjustment of the operating channel and SSID via the WEB. For safety, the user should change the SSID and the password during the first login. Please follow the below steps:



<http://192.168.1.10>

1. Connect 12V power supplies to the transmitter and all receivers, and let them finish the pairing sequence.
2. Enable WiFi on the mobile phone / PC, search for and connect to SSID: JTD\_HDMI\_Wireless\_1 Enter the default password: 00000000.
3. Modify the IP address type of the mobile phone / PC to Auto (DHCP).  
When you select the static type, you must be set the IP in 192.168.1. xxx address segment range, e.g. 192.168.1.100.
4. Open the browser and scan the QR code or enter “192.168.1.10” in the address bar to enter the web GUI as shown below:



5. Enter the default login password: admin, click “Login” to open the settings interface. If you want to modify the login password, please click on the ” Modify ” button. After the password has been modified click “save” to save your changes and exit. Restore factory settings by clicking the “reset” button.

A screenshot of a web GUI settings interface. It has a light gray background. There are four configuration fields, each with a label and a value: "Wireless Band:" with value "5G", "Channel:" with value "44", "Name(SSID):" with value "HDMI\_Wireless", and "PSK Password:" with value "00000000". Each field has a dropdown arrow on the right. At the bottom of the interface are two large green buttons: "save" on the left and "reset" on the right.

6. If you have made an incorrect setting adjustment or forgot the set password, you can restore factory settings on both transmitter and receiver.

## **SPECIFICATIONS :**

### **JTECH-WE X 200**

HDMI resolution .....	up to 1080P@50/60Hz
HDMI Audio Format.....	LPCM2.0/48KHz/16Bit
HDMI Max bandwidth.....	225MHz
HDMI Max baud rate.....	6.75Gbps
Input/Output TMDS signal.....	0.5~1.5Volts p-p(TTL)
Input/Output DDC signal .....	5Volts p-p (TTL)
HDMI output cable distance.....	≤12m AWG26 HDMI standard cable
Antenna type.....	External dual 3dBi gain antenna
Wireless standard.....	IEEE 802.11a/n
Wireless Band.....	5GHz ISM Band
Max Data rates.....	2T2R up to 300Mbps
Transmit Output Power(IPEX).....	20dBm Max
Transmission distance.....	up to 200m (in open space)
IR Carrier frequency.....	20-60KHz
TX/RX Max working current .....	1A
Power adapter format Input.....	AC 100V~240V 50HZ/60Hz, DC12A
Operating Temperature range.....	-5 to +45°C
Storage Temperature range.....	-20 to +60 °C
Operating Humidity range .....	10 to 90%RH (No Condensation)
Storage Humidity range.....	5 to 95%RH (No Condensation)
Case Dimension (L x W x H).....	5 x 5 x 0.98 (in)
Weight .....	TX .359 lbs / RX.352lbs

### **Notes:**

Please use the machine as instructed to preserve device longevity.

1. The machine should be placed in a location far from damp conditions, high temperatures, and dust. Please also avoid erosive and oxidative
2. Avoid dropping, hitting or shaking the wireless extenders.
3. Touching the power adaptor with wet hands is prohibited.
4. Please hold the power adaptor head and do not pull the power cord when removing it from an electrical socket.
5. Please turn the power off when the machines are not used for a prolonged period of time.
6. Please do not attempt to open or tamper with the internal components.
7. Please use the provided power adapter only.

### **FAQ :**

Before power on, please check all connecting cables carefully.

Please ensure that all cables are seated in their respective ports correctly.

No.	Problem Description	Solutions
1	No display	<ol style="list-style-type: none"> <li>1. Ensure the TV is on and is connected to the extender via HDMI.</li> <li>2. Please check the TX power supply</li> <li>3. Make sure the TV is working regularly</li> </ol>
2	64 Displays Connecting	<ol style="list-style-type: none"> <li>1. Please check the RX power supply</li> <li>2. Please ensure the WEB settings are set correctly (if customized)</li> <li>3.3 Co-channel interference. Please select a new channel</li> <li>4. Please power cycle both the transmitter and receiver</li> </ol>

3	Displays 'No signal'	<ol style="list-style-type: none"> <li>1. Check the signal source is powered on and output is normal.</li> <li>2. Check the signal source output resolution (ensure it is supported)</li> <li>3. Make sure the HDMI cable is properly connected</li> </ol>
4	Transmission distance is short	<ol style="list-style-type: none"> <li>1. Please adjust the angle of the antenna or adjust the placement</li> <li>2. Concrete walls. Brick. Wallpaper. Metal. The bulletproof glass will shorten the signal cover range or cause significant signal loss</li> <li>3. Co-channel interference. Please select a new channel</li> </ol>
5	Image is not fluid	<ol style="list-style-type: none"> <li>1. Please adjust the angle of the antenna or adjust the placement</li> <li>2. Co-channel interference. Please select a new channel</li> </ol>
6	Can't find the SSID	<ol style="list-style-type: none"> <li>1. Please check the RX and TX power supply</li> <li>2. Please check whether the Phone/PC supports 5G band</li> <li>3. Factory default or turn off the power restart</li> </ol>
7	Can't log in to the Web settings interface	<ol style="list-style-type: none"> <li>1. Please check the RX and TX power supply</li> <li>2. Please check the IP type of mobile phone/PC is Auto (DHCP)</li> <li>3. Please check the PC's IP is 192.168.1. XXX address range</li> <li>4. Please try logging in with a different web browser</li> </ol>



[WWW.JTECHDIGITAL.COM](http://WWW.JTECHDIGITAL.COM)

PUBLISHED BY 3-TECH DIGITAL INC.

12803 PARK ONE DRIVE SUGAR LAND, TX 77478

## Documents / Resources

	<p><b><a href="#">TECH DIGITAL JTD-611V3 200 Wireless HDMI Extender</a></b> [pdf] User Manual</p> <p>JTD-611V3, JTECH-WEX200, 200 Wireless HDMI Extender</p>
--	--



