

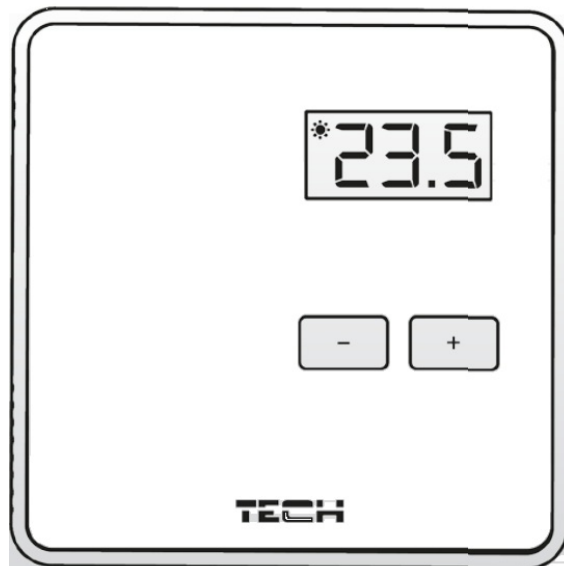


TECH CONTROLLERS EU-R-9b Controller User Manual

[Home](#) » [TECH CONTROLLERS](#) » TECH CONTROLLERS EU-R-9b Controller User Manual 

TECH CONTROLLERS

EU-R-9b Controller
User Manual



Contents

- [1 EU-R-9b Controller](#)
- [2 Safety](#)
- [3 Description](#)
- [4 How to use the controller](#)
- [5 Technical data](#)
- [6 Documents / Resources](#)
- [7 Related Posts](#)

EU-R-9b Controller

WARRANTY CARD

TECH company ensures to the Buyer proper operation of the device for the period of 24 months from the date of sale. The Guarantor undertakes to repair the device free of charge if the defects occurred through the manufacturer's fault. The device should be delivered to its manufacturer. Principles of conduct in the case of a complaint are determined by the Act on specific terms and conditions of consumer sale and amendments of the Civil Code (Journal of Laws of 5 September 2002).

CAUTION! THE TEMPERATURE SENSOR CANNOT BE IMMERSSED IN ANY LIQUID (OIL ETC). THIS MAY RESULT IN DAMAGING THE CONTROLLER AND LOSS OF WARRANTY! THE ACCEPTABLE RELATIVE HUMIDITY OF THE CONTROLLER'S ENVIRONMENT IS 5÷85% REL.H. WITHOUT THE STEAM CONDENSATION EFFECT.

THE DEVICE IS NOT INTENDED TO BE OPERATED BY CHILDREN.

The costs of unjustifiable service call to a defect will be borne exclusively by the buyer. The unjustifiable service call is defined as a call to remove damages not resulting from the Guarantor's fault as well as a call considered unjustifiable by the service after diagnosing the device (e.g. damage of the equipment through the fault of the client or not subject to Warranty), or if the device defect occurred for reasons lying beyond the device.

In order to execute the rights arising from this Warranty, the user is obliged, at his own cost and risk, deliver the device to the Guarantor along with a correctly filled-in warranty card (containing in particular the sale date, the seller's signature and a description of the defect) and sales proof (receipt, VAT invoice, etc.). The Warranty Card is the only basis for repair free of charge. The complaint repair time is 14 days.

When the Warranty Card is lost or damaged, the manufacturer does not issue a duplicate.

Safety

Before using the device for the first time the user should read the following regulations carefully. Not obeying the rules included in this manual may lead to personal injuries or controller damage. The user's manual should be stored in a safe place for further reference. In order to avoid accidents and errors it should be ensured that every person using the device has familiarized themselves with the principle of operation as well as security functions of the controller. If the device is to be sold or put in a different place, make sure that the user's manual is there with the device so that any potential user has access to essential information about the device.

The manufacturer does not accept responsibility for any injuries or damage resulting from negligence; therefore, users are obliged to take the necessary safety measures listed in this manual to protect their lives and property.



WARNING

- The regulator should not be operated by children.
- Any use other than specified by the manufacturer is forbidden.

Description

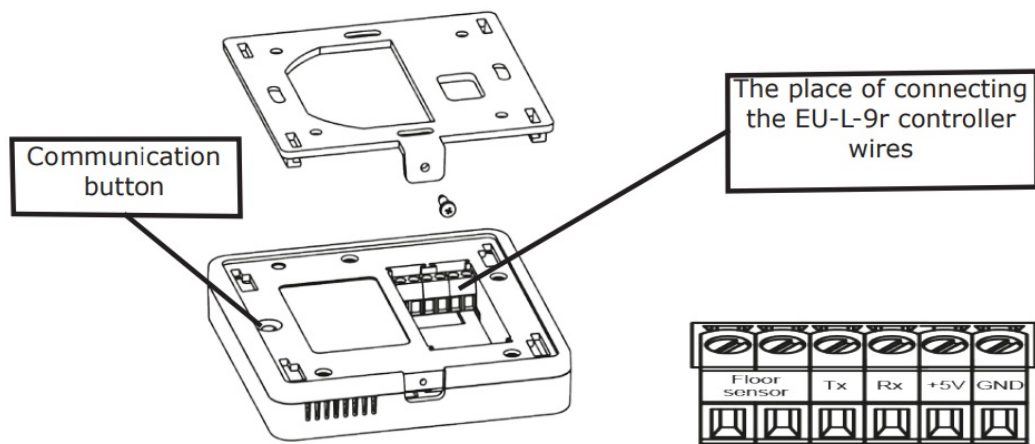
Room regulators EU-R-9b are intended to be installed in heating zones. They send temperature information to EU-L-9 external controller, which uses the information to control the thermostatic valves (by opening them when the temperature is too low and closing them when the pre-set room temperature has been reached).

Current temperature is displayed on the screen. It is also possible to change the pre-set temperature in a zone permanently or for a period of time (with time limit).

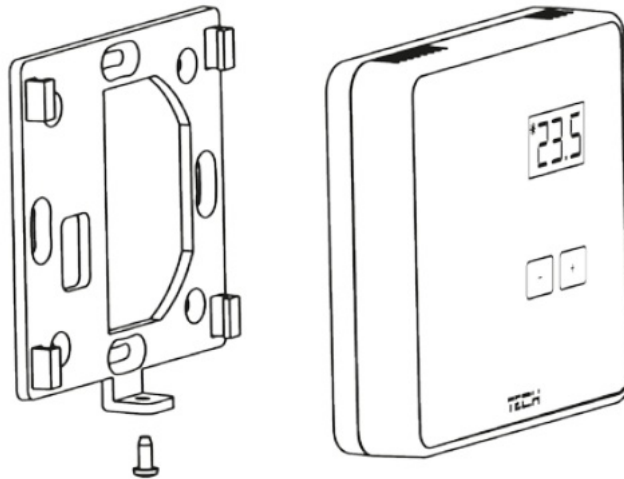
Controller assets:

- built-in temperature sensor
- wall-mountable cover
- possibility of connecting floor sensor

The device should be installed by a qualified person. In order to install the regulator correctly, connect the sensor wires properly.



Mount the EU-R-9b sensor hanger on the wall and next fit the cover.



The following rules must be kept in mind:

- once registered, the regulator cannot be unregistered, but only switched off in the submenu of a given zone.
- if the user attempts to assign a sensor to the zone to which other sensor has already been assigned, the first sensor becomes unregistered and it is replaced by the second one.
- if the user attempts to assign a sensor which has already been assigned to a different zone, the sensor is unregistered from the first zone and registered in the new one.

It is possible to set individual pre-set temperature value and weekly schedule for each room regulator assigned to a given zone.

EU Declaration of conformity

Hereby, we declare under our sole responsibility that EU-R-9b manufactured by TECH STEROWNIKI, headquartered in Wieprz Biała Droga 31, 34-122 Wieprz, is compliant with Directive 2014/35/EU of the European Parliament and of the Council of 26 February 2014 on the harmonisation of the laws of Member States relating to the making available on the market of electrical equipment designed for use within certain voltage limits (EU OJ L 96, of 29.03.2014, p. 357), Directive 2014/30/EU of the European Parliament and of the Council of 26 February 2014 on the harmonisation of the laws of Member States relating to electromagnetic compatibility (EU OJ L 96 of 29.03.2014, p.79), Directive 2009/125/EC establishing a framework for the setting of ecodesign requirements for energy-related products as well as the regulation by the MINISTRY OF ENTREPRENEURSHIP AND TECHNOLOGY of 24 June 2019 amending the regulation concerning the essential requirements as regards the restriction of the use of certain hazardous substances in electrical and electronic equipment, implementing provisions of Directive (EU) 2017/2102 of the European Parliament and of the Council of 15 November 2017 amending Directive 2011/65/EU on the restriction of the use of certain hazardous substances in electrical and electronic equipment (OJ L 305, 21.11.2017, p. 8).

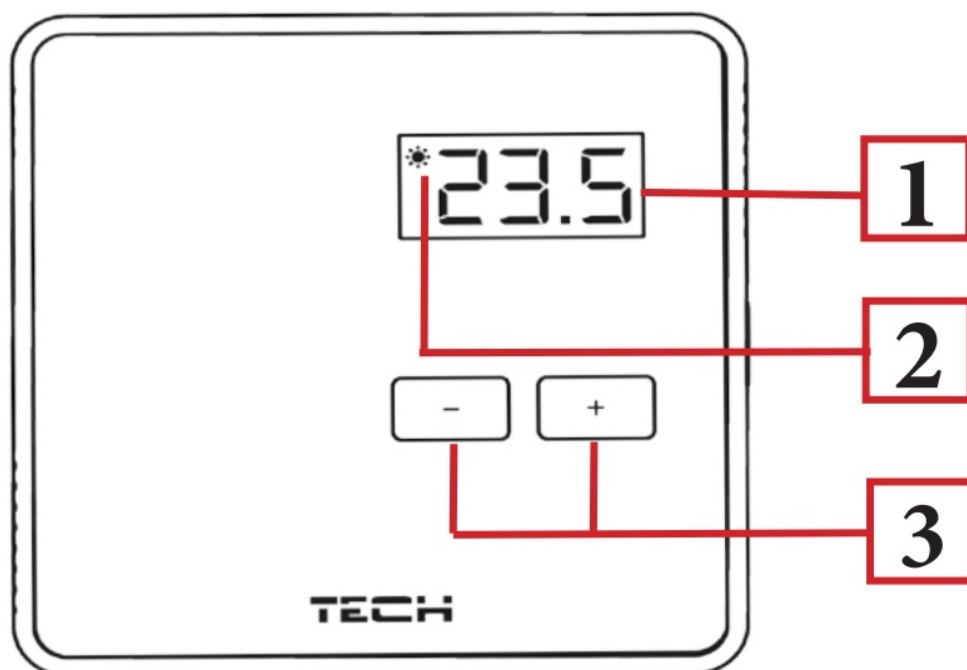
For compliance assessment, harmonized standards were used: PN-EN IEC 60730-2-9:2019-06, PN-EN 60730-1:2016-10.

Paweł Jura
Paweł Jura

Janusz Master
Janusz Master

Prezesa firmy

How to use the controller



1. Display – current zone temperature
2. LED – flashing – pre-set zone temperature has not been reached steady on – pre-set temperature has been reached
3. MINUS/PLUS buttons

NOTE

- If you press PLUS and MINUS at the same time, the screen will display current floor temperature (if the floor sensor has been connected).
- If you hold PLUS and MINUS at the same time, you may open up the software version submenu or heating/cooling submenu (HEA/ COO)*.

*The functions available depend on the main controller version.

How to register the room regulator in a given zone:

Each room regulator should be registered in a zone. In order to register, go to the EU-L-9 controller menu and select Registration in the submenu of a given zone (Menu / Zone / Type of sensor / Wired). After selecting Registration icon, press and hold the button at the back of the room regulator for 4 seconds.

If the registration process has been completed successfully, EU-L-9 screen displays an appropriate message whereas the room sensor screen displays Scs. If the room sensor displays Err, an error has occurred during the registration process.

NOTE

Only one room regulator may be assigned to a zone.

How to change the pre-set temperature

The pre-set zone temperature may be adjusted directly from EU-R-9b room sensor using PLUS and MINUS buttons.

During controller inactivity, the main screen displays current zone temperature. After pressing PLUS or MINUS, the current temperature is replaced with the pre-set temperature (the digits are flashing). Using PLUS and MINUS the user may adjust the pre-set temperature value.

After setting desired value wait for 3 seconds – after this time the display shows a panel to define how long the new setting should apply.

Time settings may be adjusted:

- permanently – press PLUS button until Con appears on the screen (the pre-set value will apply all the time regardless of schedule settings).
- for a specified number of hours – press PLUS or MINUS until the desired number of hours appears on the screen e.g. 01h (the pre-set value will apply for a specified period of time; after that the weekly schedule will apply).
- if the temperature value defined in the weekly schedule settings should apply, press MINUS until the screen displays OFF.

Technical data

Room temperature adjustment range	5-350C
Power supply	5V DC
5V Power consumption	0,01W
Measurement error	+/-0,50C



We are committed to protecting the environment. Manufacturing electronic devices imposes an obligation of providing for environmentally safe disposal of used electronic components and devices. Hence, we have been entered into a register kept by the Inspection For Environmental Protection. The crossed-out bin symbol on a product means that the product may not be disposed of to household waste containers. Recycling of wastes helps to protect the environment. The user is obliged to transfer their used equipment to a collection point where all electric and electronic components.

**TECH
CONTROLLERS**

Central headquarters: ul. Biala Droga 31,34-122 Wieprz

Service: ul. Skotnica 120.32-652 Bulowice

phone: +48 33 875 93 80

e-mail: serwis@techsterowniki.pl

Documents / Resources



[TECH CONTROLLERS EU-R-9b Controller](#) [pdf] User Manual
EU-R-9b Controller, EU-R-9b, Controller