



TECH CONTROLLERS EU-R-8b PLUS Wireless Two Position Room Thermostat User Manual

[Home](#) » [TECH CONTROLLERS](#) » TECH CONTROLLERS EU-R-8b PLUS Wireless Two Position Room Thermostat User Manual 

TECH CONTROLLERS EU-R-8b PLUS Wireless Two Position Room Thermostat User Manual



Contents

- 1 Description
- 2 Low battery
- 3 How to register a room regulator in a given zone
- 4 How to change the pre-set temperature
- 5 How to use the regulator
- 6 Description of the functions available in the menu
- 7 WARRANTY CARD
- 8 Safety
- 9 Technical data
- 10 EU Declaration of conformity
- 11 Documents / Resources
 - 11.1 References
- 12 Related Posts

Description

The EU-R-8b Plus room regulator is designed to cooperate with TECH external controllers.

It should be installed in heating zones. The regulator sends current room temperature and humidity readings to the external controller, which uses the data to control thermostatic valves (opening them when the temperature is too low and closing them when the room temperature has been reached).

Current temperature is displayed on the screen. The middle button ● enables the user to change the displayed parameter from current temperature to current humidity. The regulator enables the user to change the pre-set zone temperature permanently or for a period of time.

Controller equipment:

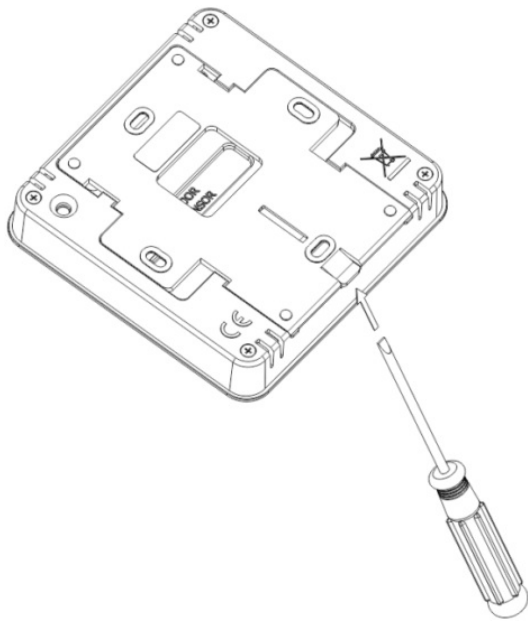
- built-in temperature sensor
- air humidity sensor
- wall-mountable casing

Low battery

If the regulator battery is low, the following message will flash on the screen: Lo.

In order for the regulator to operate properly, replace the batteries (2xAAA 1,5V).

In order to replace batteries or connect the floor sensor, remove the back cover as illustrated in the pictures below.



How to register a room regulator in a given zone

Each room regulator should be registered in a zone. In order to register, go to the external controller menu and select Sensor in the submenu of a given zone (Zone / Registration / Sensor). After selecting Registration icon, press the button on the back of the room regulator.

If the registration process has been completed successfully, the external controller screen will display a message to confirm whereas the room sensor screen will display **Scs**. If the room sensor displays **Err**, an error has occurred during the registration process.

NOTE

- To register the regulator, the buttons must be unlocked.
- Only one room regulator may be assigned to each zone.
- In zone controllers, a regulator may serve as a floor sensor. In order to register the device as a sensor, press the communication button on the regulator twice.
- Hold the registration button to display the current software version.
- If the Una message appears (despite correct device registration), wait for about 4 minutes or force communication again by holding the registration button for about 2 seconds until the program version is displayed.

How to change the pre-set temperature

The pre-set zone temperature may be adjusted directly from the EU-R-8b Plus room regulator using the buttons < >.

During inactivity, the current zone temperature is displayed on the controller screen. Use the buttons < > to change the set value. When the pre-set temperature has been defined, the setting screen will appear.

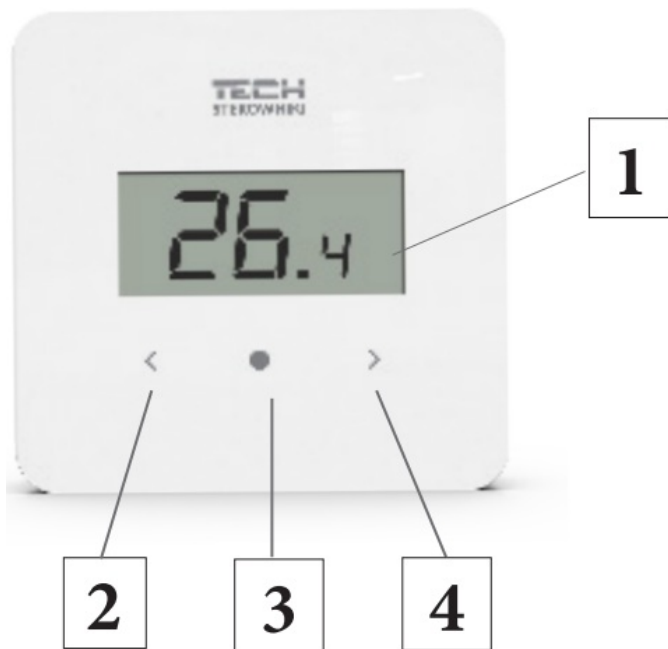
Time settings can be adjusted using the buttons < >:

- permanently – hold the button > until Con is displayed (the pre-set temperature will be valid for an

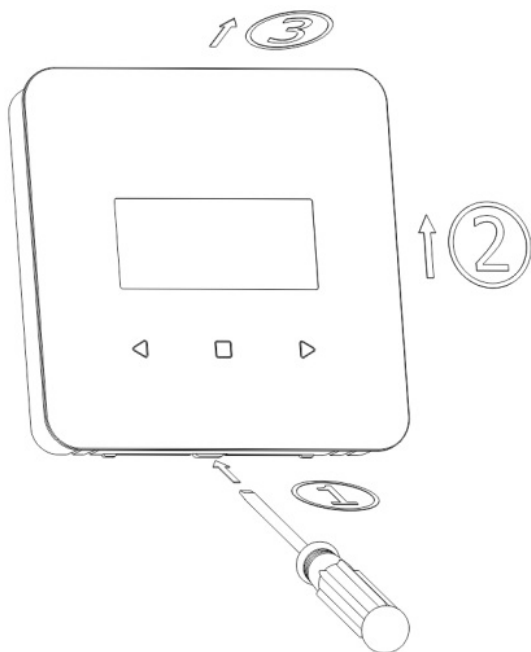
indefinite period of time, regardless of the schedule settings). In order to confirm, press the middle button ●.

- for a specific number of hours – press one of the buttons < > until the desired number of hours is displayed, e.g. 01h (the pre-set temperature will be valid for a specific time, and then the weekly schedule will apply). In order to confirm, press the middle button ●.
- if you want the pre-set temperature resulting from the weekly schedule settings to apply, press the button < until **OFF** appears on the screen. In order to confirm, press the middle button ●.

How to use the regulator



1. Display – current zone temperature
2. Button <
3. Button ●
 - **press** this button to change the view from room temperature to humidity level/confirmation of settings
 - **hold** this button to enter the menu
4. Button >



Bear in mind the following rules:

- Once registered, the sensor cannot be unregistered, but only disabled by selecting OFF in the submenu of a given zone in the external controller.
- If the user attempts to assign a sensor to the zone to which other sensor has already been assigned, the first sensor becomes unregistered and it is replaced by the other one.
- If the user attempts to assign a sensor which has already been assigned to a different zone, the sensor is unregistered from the first zone and registered in the new one.

It is possible to set individual pre-set temperature value and weekly schedule for each room regulator assigned to a given zone. The settings may be configured both in the external controller menu (Main menu/ Sensors) and via www.emodul.eu (using EU-505 or WiFi RS). The pre-set temperature may also be adjusted directly from the room sensor using the buttons < >.

Description of the functions available in the menu

In order to enter the menu, **hold** the middle button ●. Use the buttons < > to switch between menu options.

1. **HEA/COO** – This function enables the user to select heating mode (HEA) or cooling mode (COO)*. In order to select, use one of the buttons < >. Press the middle button ● in order to confirm.

*In order to activate the function, a master zone controller is necessary, offering the heating / cooling function and an appropriate software version.

2. **BAT** – the function allows the user to view the battery status (%).
After selecting the Bat function, press the middle button ●.
3. **CAL** – this function allows the user to view the sensor calibration. After selecting the Can function, press the middle button ●.
4. **LOC** – the function enables the automatic button lock. After selecting the Loc function, press the central button ●. Then a question is displayed whether to enable the lock (yes / no). Select by pressing one of the buttons < >. Confirm by pressing the middle button ●.
To unlock the button, hold the buttons < > simultaneously. When Loc is displayed, the buttons are unlocked.

To disable the lock, enter the Loc function again and select the no option.

Confirm by pressing the middle button ●.

5. **DEF** – this function allows the user to restore factory settings. After selecting the Def function, press the middle button ●. Then a question is displayed whether to restore the factory settings (yes / no). Select by pressing one of the buttons < >. Confirm by pressing the middle button ●.
6. **RET** – exit the menu. Once in the Ret function, press the middle button ● to exit the menu.

WARRANTY CARD

TECH STEROWNIKI II Sp. z o.o. company ensures to the Buyer proper operation of the device for the period of 24 months from the date of sale. The Guarantor undertakes to repair the device free of charge if the defects occurred through the manufacturer's fault. The device should be delivered to its manufacturer. Principles of conduct in the case of a complaint are determined by the Act on specific terms and conditions of consumer sale and amendments of the Civil Code (Journal of Laws of 5 September 2002).

CAUTION! THE TEMPERATURE SENSOR CANNOT BE IMMERSSED IN ANY LIQUID (OIL ETC). THIS MAY RESULT IN DAMAGING THE CONTROLLER AND LOSS OF WARRANTY! THE ACCEPTABLE RELATIVE HUMIDITY OF THE CONTROLLER'S ENVIRONMENT IS 5÷85% REL.H. WITHOUT THE STEAM CONDENSATION EFFECT.

THE DEVICE IS NOT INTENDED TO BE OPERATED BY CHILDREN.

Activities related to setting and regulation of the controller parameters described in the Instruction Manual and parts wearing out during normal operation, such as fuses, are not covered by warranty repairs. The warranty does not cover damages arising as a result of improper operation or through the user's fault, mechanical damage or damage created as a result of fire, flood, atmospheric discharges, overvoltage or short-circuit. The interference of an unauthorized service, wilful repairs, modifications and construction changes cause the loss of Warranty. TECH controllers have protective seals. Removing a seal results in the loss of Warranty.

The costs of unjustifiable service call to a defect will be borne exclusively by the buyer. The unjustifiable service call is defined as a call to remove damages not resulting from the Guarantor's fault as well as a call considered unjustifiable by the service after diagnosing the device (e.g. damage of the equipment through the fault of the client or not subject to Warranty), or if the device defect occurred for reasons lying beyond the device. In order to execute the rights arising from this Warranty, the user is obliged, at his own cost and risk, deliver the device to the Guarantor along with a correctly filled-in warranty card (containing in particular the sale date, the seller's signature and a description of the defect) and sales proof (receipt, VAT invoice, etc.). The Warranty Card is the only basis for repair free of charge. The complaint repair time is 14 days. When the Warranty Card is lost or damaged, the manufacturer does not issue a duplicate.

Safety

Before using the device for the first time the user should read the following regulations carefully. Not obeying the rules included in this manual may lead to personal injuries or controller damage. The user's manual should be stored in a safe place for further reference. In order to avoid accidents and errors it should be ensured that every person using the device has familiarized themselves with the principle of operation as well as security functions of the controller. If the device is to be sold or put in a different place, make sure that the user's manual is there with the device so that any potential user has access to essential information about the device.

The manufacturer does not accept responsibility for any injuries or damage resulting from negligence; therefore, users are obliged to take the necessary safety measures listed in this manual to protect their lives and property.

Technical data

Temperature adjustment range	5÷350C
Power supply	batteries 2xAAA 1,5V
Measurement error	±0,50C
Humidity Measurement range	10-95%RH
Operation frequency	868MHz

WARNING

- The regulator is not intended to be used by children.
- Any use other than specified by the manufacturer is forbidden.
- The device should be installed by a qualified person.


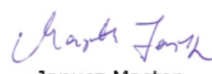


We are committed to protecting the environment. Manufacturing electronic devices imposes an obligation of providing for environmentally safe disposal of used electronic components and devices. Hence, we have been entered into a register kept by the Inspection For Environmental Protection. The crossed-out bin symbol on a product means that the product may not be disposed of to household waste containers. Recycling of wastes helps to protect the environment. The user is obliged to transfer their used equipment to a collection point where all electric and electronic components.

EU Declaration of conformity

Hereby, we declare under our sole responsibility that the room regulator **EU-R-8b Plus** manufactured by TECH STEROWNIKI II Sp. z o.o., headquartered in 31, 34-122 is compliant with Directive 2014/53/EU of the European parliament and of the Council of 16 April 2014 on the harmonization of the laws of the Member States relating to the making available on the market of radio equipment, Directive 2009/125/EC establishing a framework for the setting of eco design requirements for energy-related products as well as the regulation by the MINISTRY OF ENTREPRENEURSHIP AND TECHNOLOGY of 24 June 2019 amending the regulation concerning the essential requirements as regards the restriction of the use of certain hazardous substances in electrical and electronic equipment, implementing provisions of Directive (EU) 2017/2102 of the European Parliament and of the Council of 15 November 2017 amending Directive 2011/65/EU on the restriction of the use of certain hazardous substances in electrical and electronic equipment (OJ L 305, 21.11.2017, p. 8). For compliance assessment, harmonized standards were used:

PN-EN IEC 60730-2-9 :2019-06 art. 3.1a Safety of use PN-EN 62479:2011 art. 3.1 a Safety of use ETSI EN 301 489-1 V2.2.3 (2019-11) art.3.1b Electromagnetic compatibility ETSI EN 301 489-3 V2.1.1:2019-03 art.3.1 b Electromagnetic compatibility ETSI EN 300 220-2 V3.2.1 (2018-06) art.3.2 Effective and coherent use of radio spectrum ETSI EN 300 220-1 V3.1.1 (2017-02) art.3.2 Effective and coherent use of radio spectrum EN IEC 63000:2018 RoHS.


Paweł Jura

Janusz Master
Prezesa firmy

TECH CONTROLLERS

Documents / Resources



[TECH CONTROLLERS EU-R-8b PLUS Wireless Two Position Room Thermostat](#) [pdf] User Manual
EU-R-8b PLUS, EU-R-8b PLUS Wireless Two Position Room Thermostat, EU-R-8b PLUS, Wire less Two Position Room Thermostat, Two Position Room Thermostat, Position Room Thermost at, Room Thermostat, Thermostat

References

- [User Manual](#)

[Manuals+](#), [Privacy Policy](#)

This website is an independent publication and is neither affiliated with nor endorsed by any of the trademark owners. The "Bluetooth®" word mark and logos are registered trademarks owned by Bluetooth SIG, Inc. The "Wi-Fi®" word mark and logos are registered trademarks owned by the Wi-Fi Alliance. Any use of these marks on this website does not imply any affiliation with or endorsement.