



# TEAM TECH Jeep JK Keypad Mounting Panel for SP-8100 8 Switch Panel Power System Installation Guide

[Home](#) » [TEAM TECH](#) » TEAM TECH Jeep JK Keypad Mounting Panel for SP-8100 8 Switch Panel Power System Installation Guide 



## JK Keypad Mounting Panel for SP-8100 8 Switch Panel Power System Installation Guide

### Contents

- [1 Jeep JK Keypad Mounting Panel for SP-8100 8 Switch Panel Power System](#)
- [2 Documents / Resources](#)
- [3 Related Posts](#)

## Jeep JK Keypad Mounting Panel for SP-8100 8 Switch Panel Power System

1. Temporarily upper interior above the rear while loosening the wiring attached remove the r trim piece view mirror the factory to it.

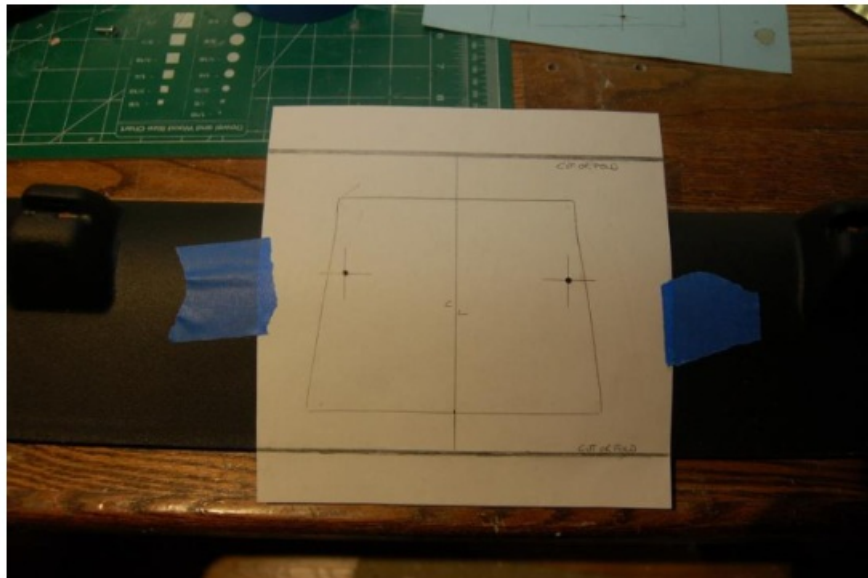


2. Continue running the SP-8100 wiring harness from the engine bay area to the area above the rear view mirror at the TTO Switch Housing



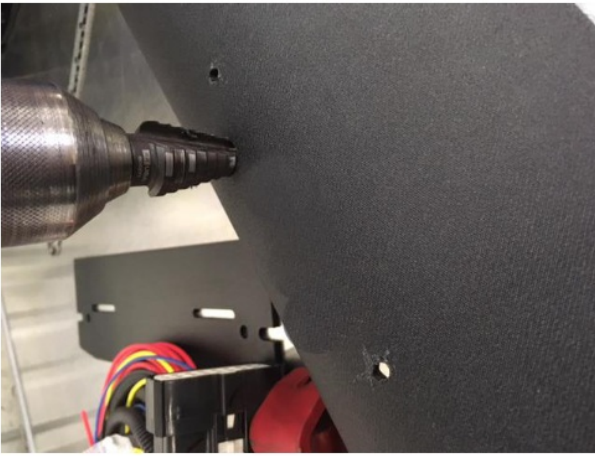


3. Cut out and center template over the interior trim piece that was located above the rearview mirror



4. Drill two  $\frac{9}{64}$ " holes as indicated with the template. Then drill a  $\frac{1}{2}$ " hole in the center of the two  $\frac{9}{64}$ " holes using an  $\frac{1}{2}$ " UNI BIT. This hole is for the wiring to transfer through





5. Attach the Switch-Pro keypad bezel into the TTO housing and screw/lock in place using the two SP-8100 metal brackets.

freaky FreCIRIZiks



6. This is what you should see at this point. Ready to mount the interior trim back into the Jeep.



7. Congratulations You have completed the housing mounting portion of the installation. Any questions please call 720-460-1403 or email us at [sales@teamtechoffroad.com](mailto:sales@teamtechoffroad.com)



[www.TeamTechOffroad.com](http://www.TeamTechOffroad.com)  
[sales@teamtechoffroad.com](mailto:sales@teamtechoffroad.com)

30403 Kings Valley Dr, Suite 1-113 Conifer CO, 80433 720-460-1403

**Documents / Resources**



**INSTALLATION GUIDE**

Jeep JK Keypad Mounting Panel for  
SP-8100 8-Switch Panel Power System

[www.TeamTechOffroad.com](http://www.TeamTechOffroad.com)

TeamTech Offroad Inc.  
3045 Kings Valley Dr. Suite 3113  
Canby, OR 97003  
(503) 930-1851

**[TEAM TECH Jeep JK Keypad Mounting Panel for SP-8100 8 Switch Panel Power System](#)** [pdf] Installation Guide

Jeep JK Keypad Mounting Panel for SP-8100 8 Switch Panel Power System, Jeep JK Keypad Mounting Panel, Mounting Panel for SP-8100 8 Switch Panel Power System, SP-8100 8 Switch Panel Power System, SP-8100 Power System, 8 Switch Panel Power System

Manuals+