




TCS Ninety Extending Dining Table Instruction Manual

[Home](#) » [TCS](#) » TCS Ninety Extending Dining Table Instruction Manual 

TCS Ninety Extending Dining Table



Contents

- 1 Important Information
- 2 Components
- 3 Assembly Instruction
- 4 Care Instructions
- 5 CUSTOMER SUPPORT
- 6 Documents / Resources
 - 6.1 References

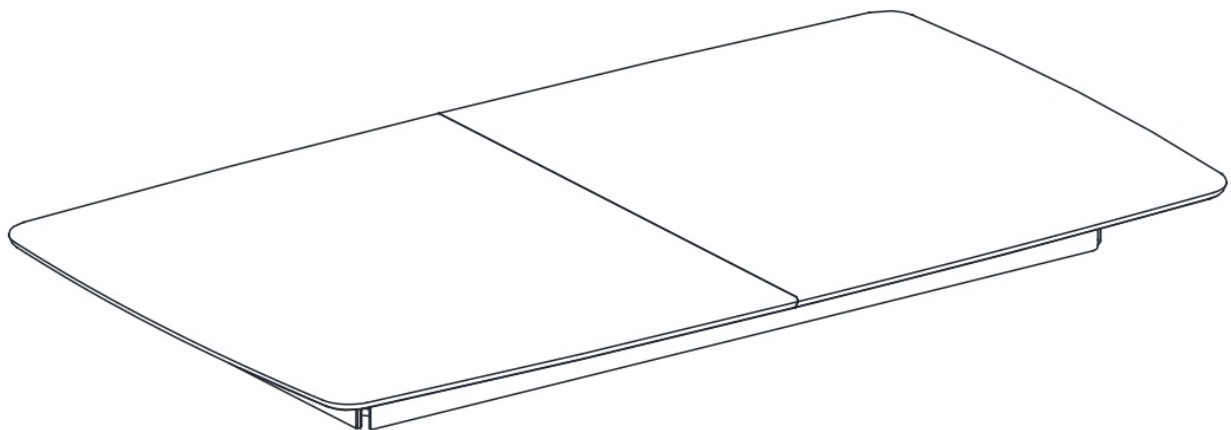
Important Information

Please note: The product arrives unassembled. It must be assembled by at least two people. Keep all packing materials until the assembly is complete to avoid loss of smaller parts. Assemble on a soft, level surface to avoid damaging the unit or your floor. We do not recommend use of power drill/drivers for inserting screws. Only use hand screwdriver.

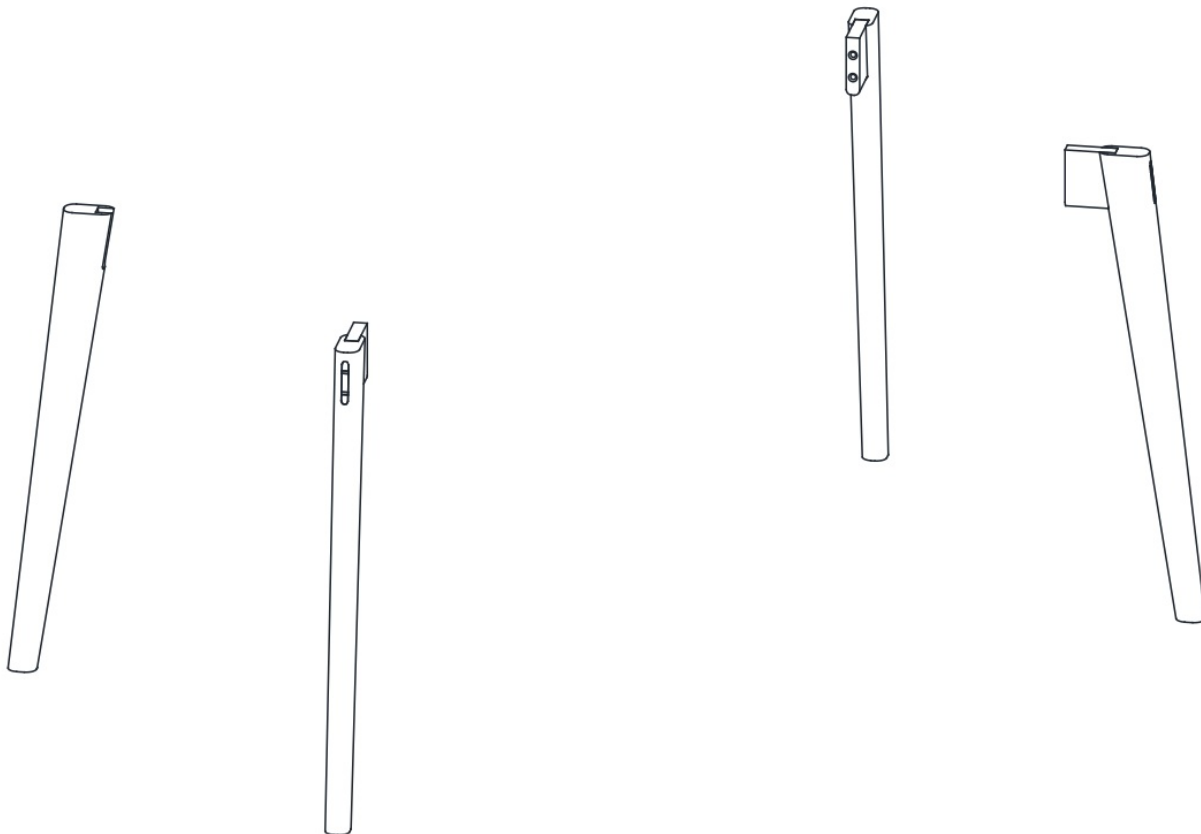
Keep these instructions for future reference.

Components

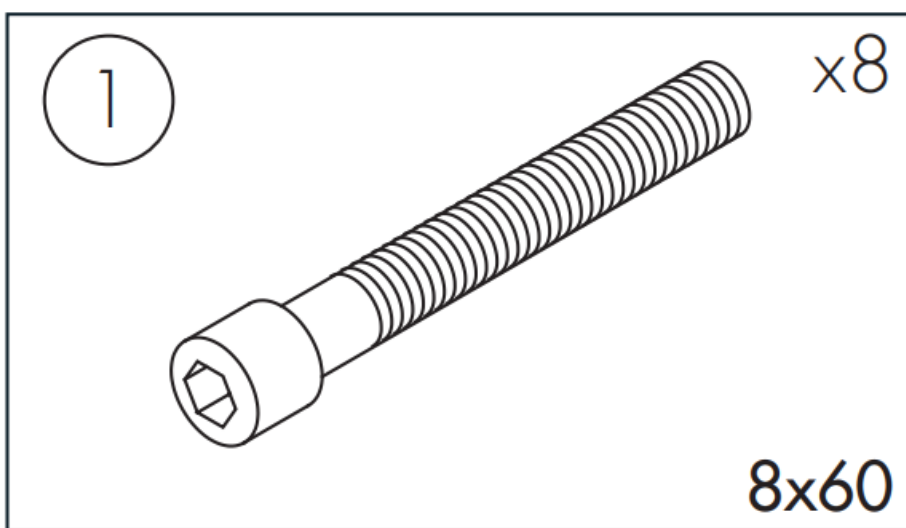
- Top Frame x1



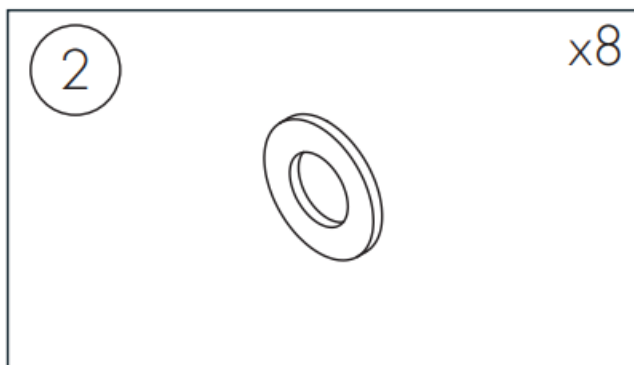
- Legs x4



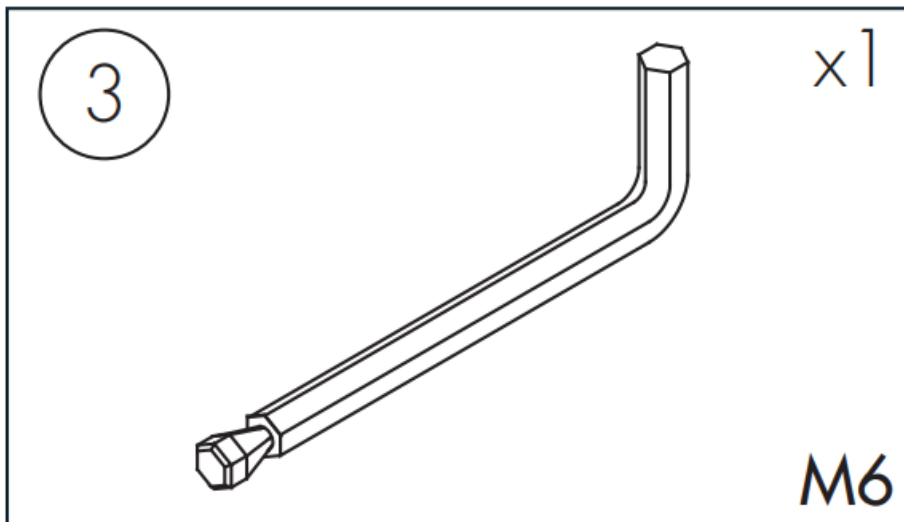
- Allen Head Bolts (1) x8



- Washer (2) x8

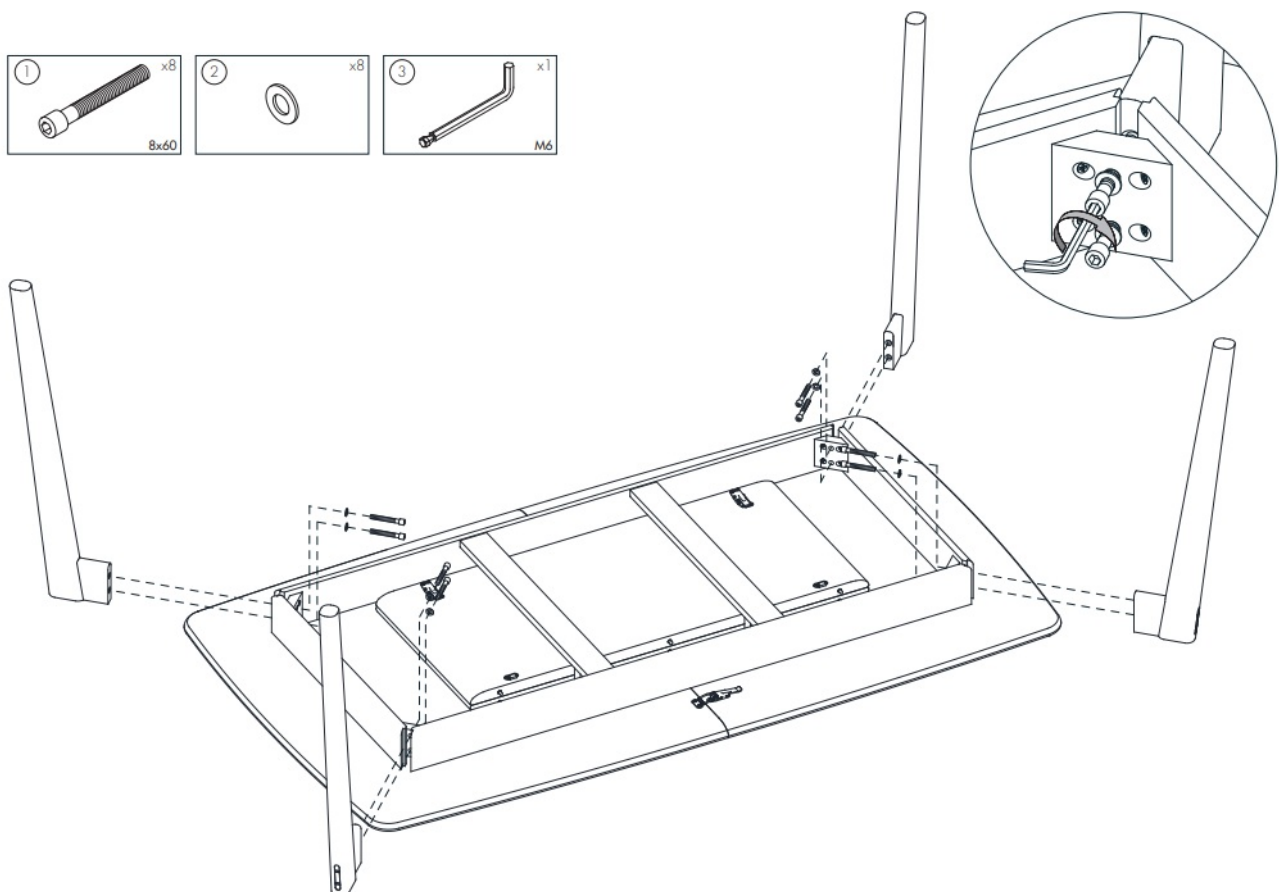


- Allen Key (3) x1

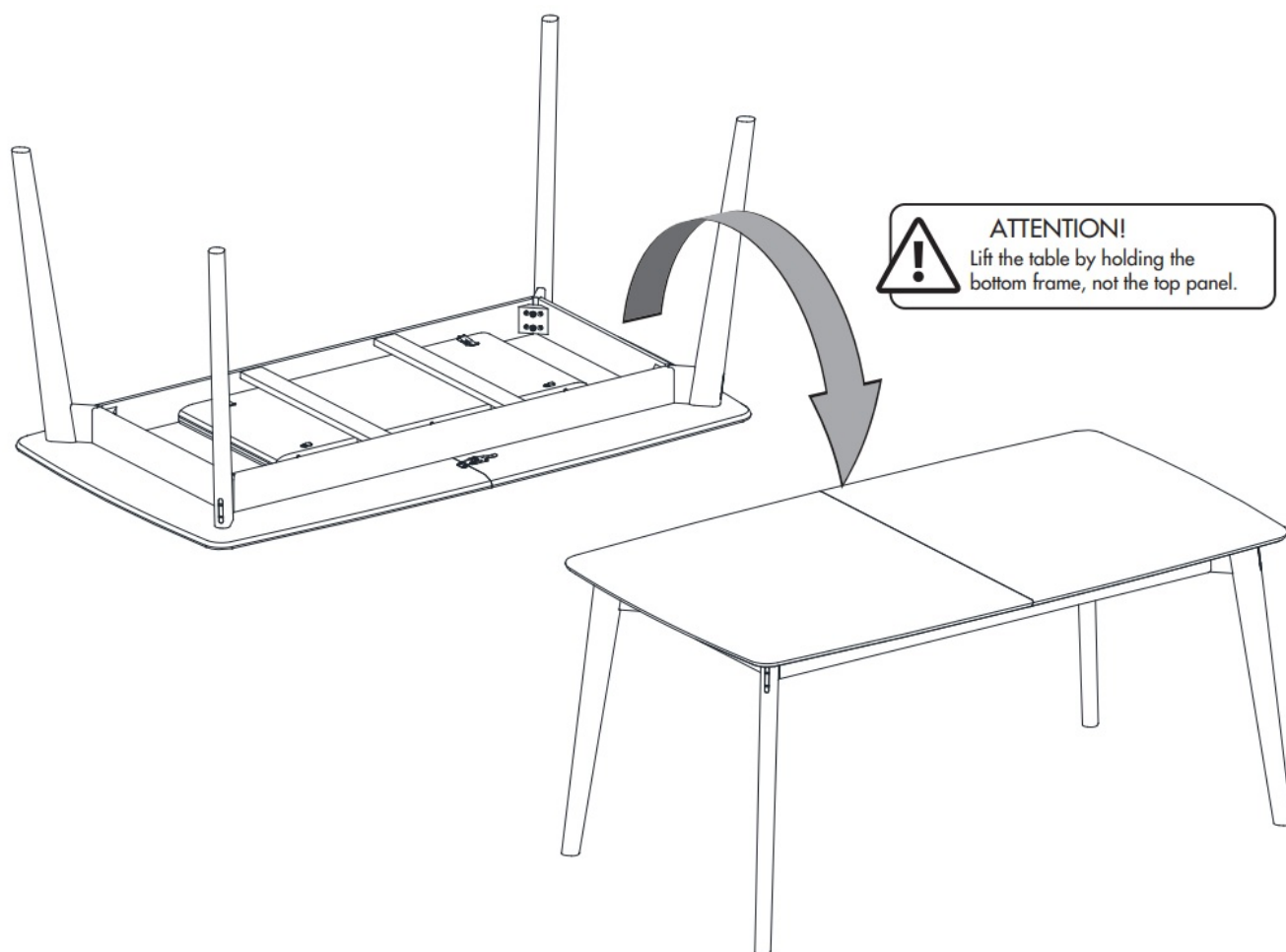


Assembly Instruction

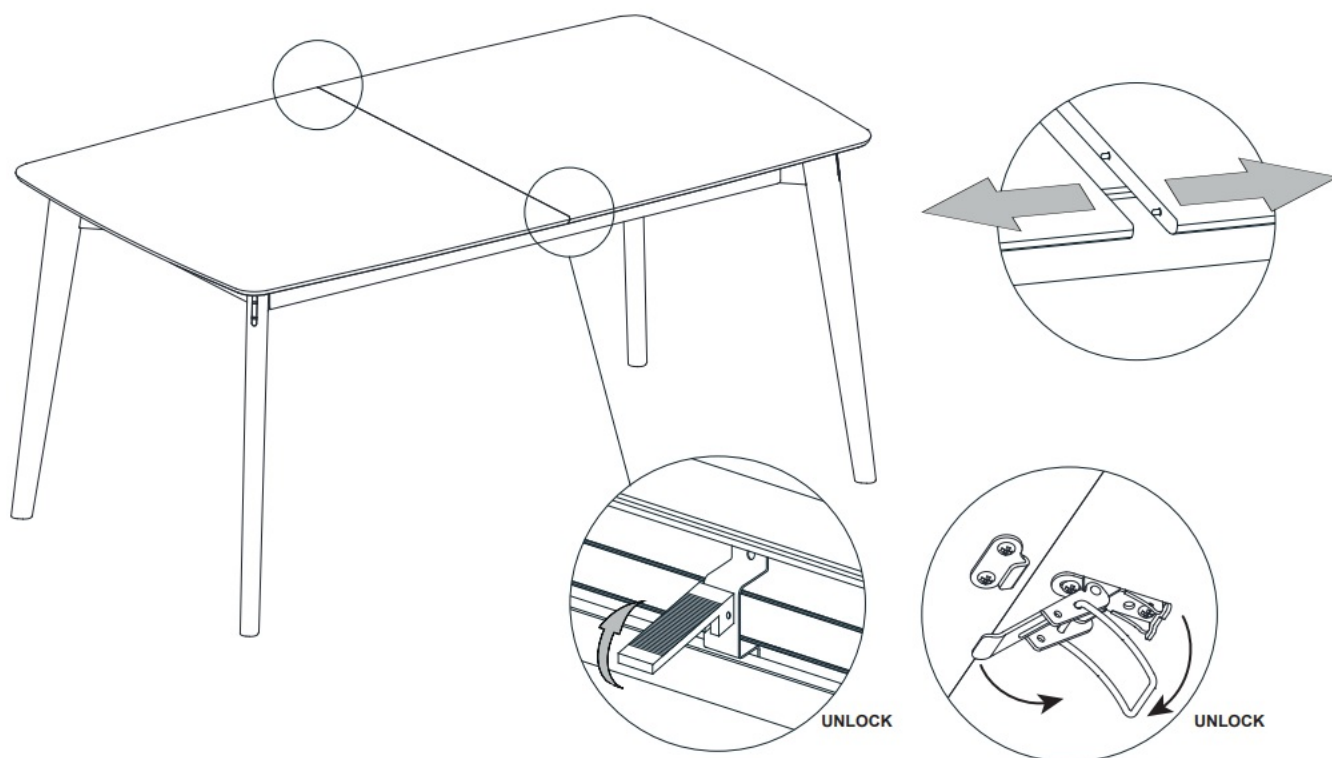
Attach the legs to the top frame by using 8x allen head bolts (1), washers (2) and the allen key (2).



Lift the unit to standing position carefully.

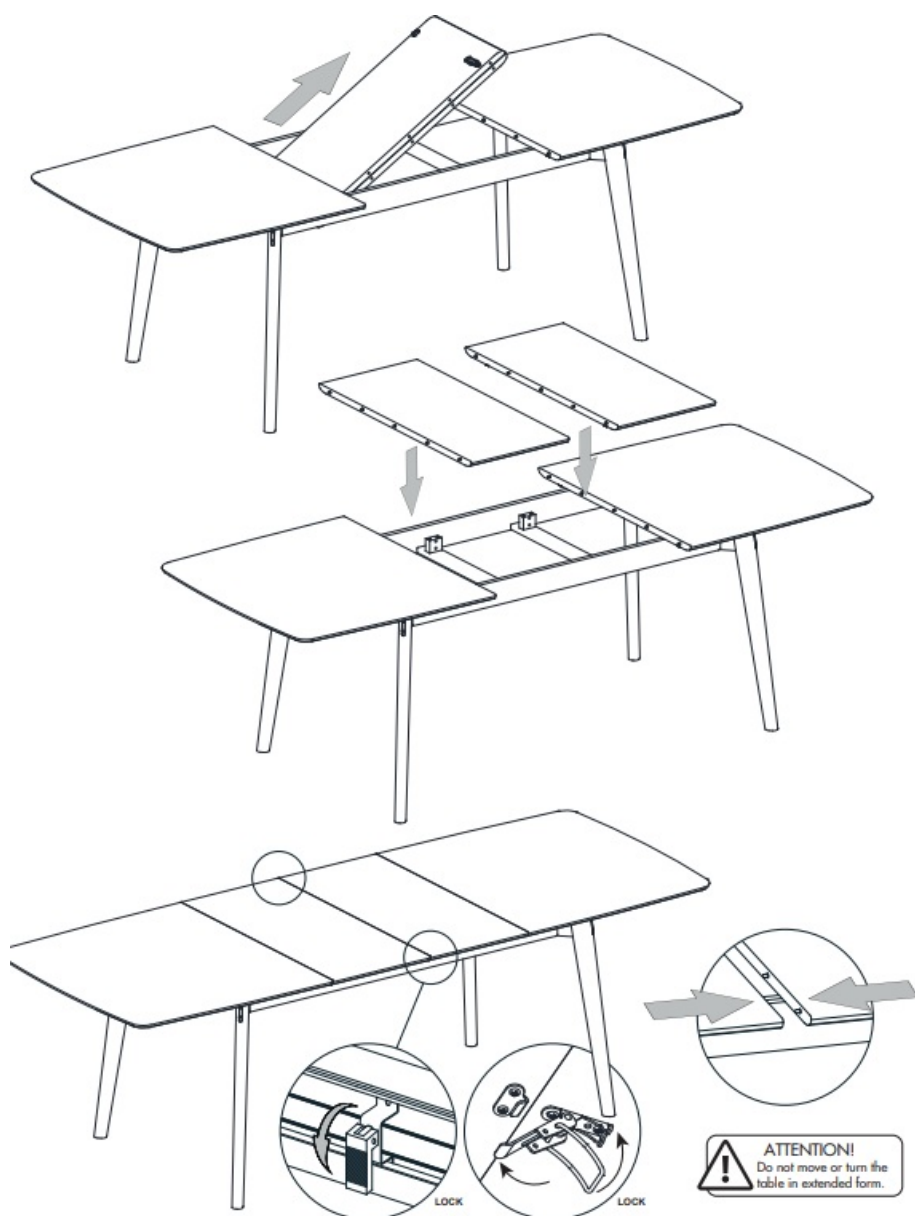


Release both lock mechanisms under the top panel and slide apart the two halves of the table top.



Take out extension leaves. Place the extension leaves and move the two halves of the top frame towards the extension leaves. Use the lock mechanism to x the top frame in place. If you prefer, you can use one extension

leaf instead of two. You can follow the same steps in reverse in order to close.



Care Instructions

Read these instructions and check pack contents carefully before attempting assembly.

Wipe with a soft, damp cloth. Mix warm water with mild detergent to remove stubborn marks. Do not use any abrasive or corrosive cleaning products.

This product is made in part of solid wood. Do not place it next to radiators or anywhere subject to excessive changes in temperature or moisture content, and avoid putting hot items directly on the wood. Spillages should be wiped away immediately.

Regularly check all fastenings to ensure that they are properly tightened.



Please do not sit or stand on this unit!

CUSTOMER SUPPORT

conranshop.com

Contact Details


United Kingdom

UK 0344 848 4000

Non UK +44 116 269 8894

Email: customerservices@theconranshop.com

Documents / Resources

 <p>Ninety Extending Dining Table Designed by The Conran Shop</p> <p>Assembly Instructions & Warranty</p>	<p>TCS Ninety Extending Dining Table [pdf] Instruction Manual</p> <p>Ninety Extending Dining Table, Ninety Extending Dining Table, Dining Table, Table</p>
--	--

References

- [User Manual](#)

Manuals+, Privacy Policy

This website is an independent publication and is neither affiliated with nor endorsed by any of the trademark owners. The "Bluetooth®" word mark and logos are registered trademarks owned by Bluetooth SIG, Inc. The "Wi-Fi®" word mark and logos are registered trademarks owned by the Wi-Fi Alliance. Any use of these marks on this website does not imply any affiliation with or endorsement.