

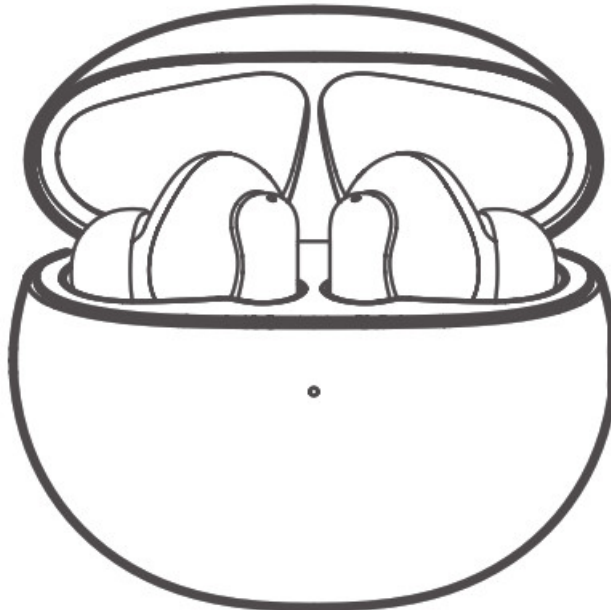


TCL TW30 Move Audio S600 User Guide

[Home](#) » [TCL](#) » TCL TW30 Move Audio S600 User Guide 

TCL

Hi! Let's get started.

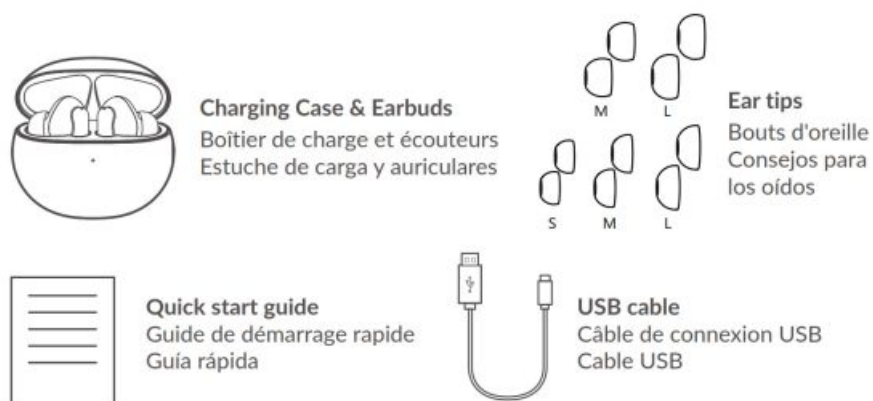


TCL MOVEAUDIO S600
TW30
Quick start guide

Contents

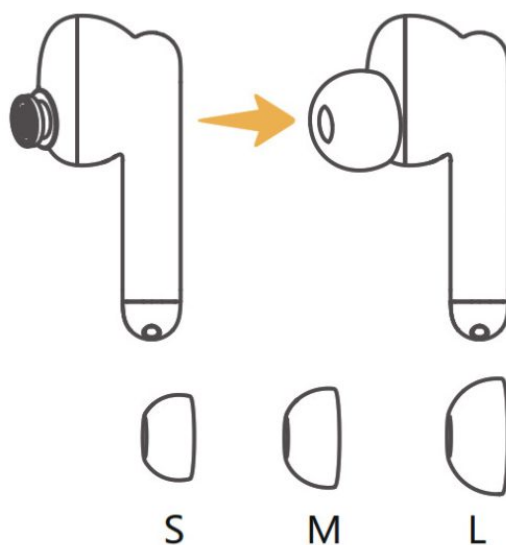
- 1 What's in the box
- 2 Changing the ear tips
- 3 Pairing
- 4 Download and install app
- 5 Default gestures
- 6 Wearing Instruction
- 7 Charging
- 8 LED Lights Indications
- 9 Reset
- 10 Documents / Resources
 - 10.1 References
- 11 Related Posts

What's in the box



Changing the ear tips

Switch ear tips based on desired noise cancellation effects and comfort level.

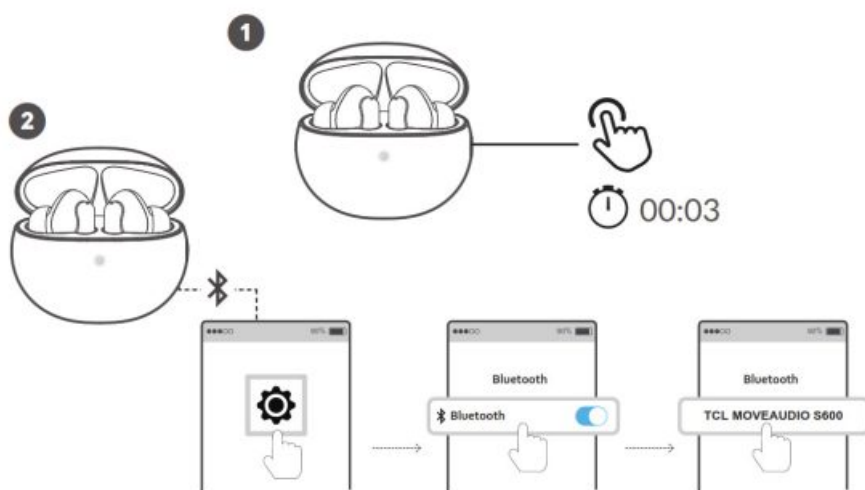


Pairing

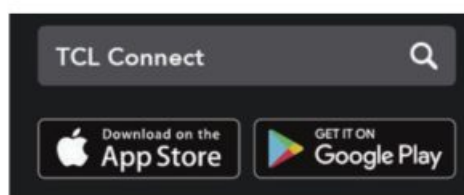
Google Fast Pair



Manual Pairing



Download and install app

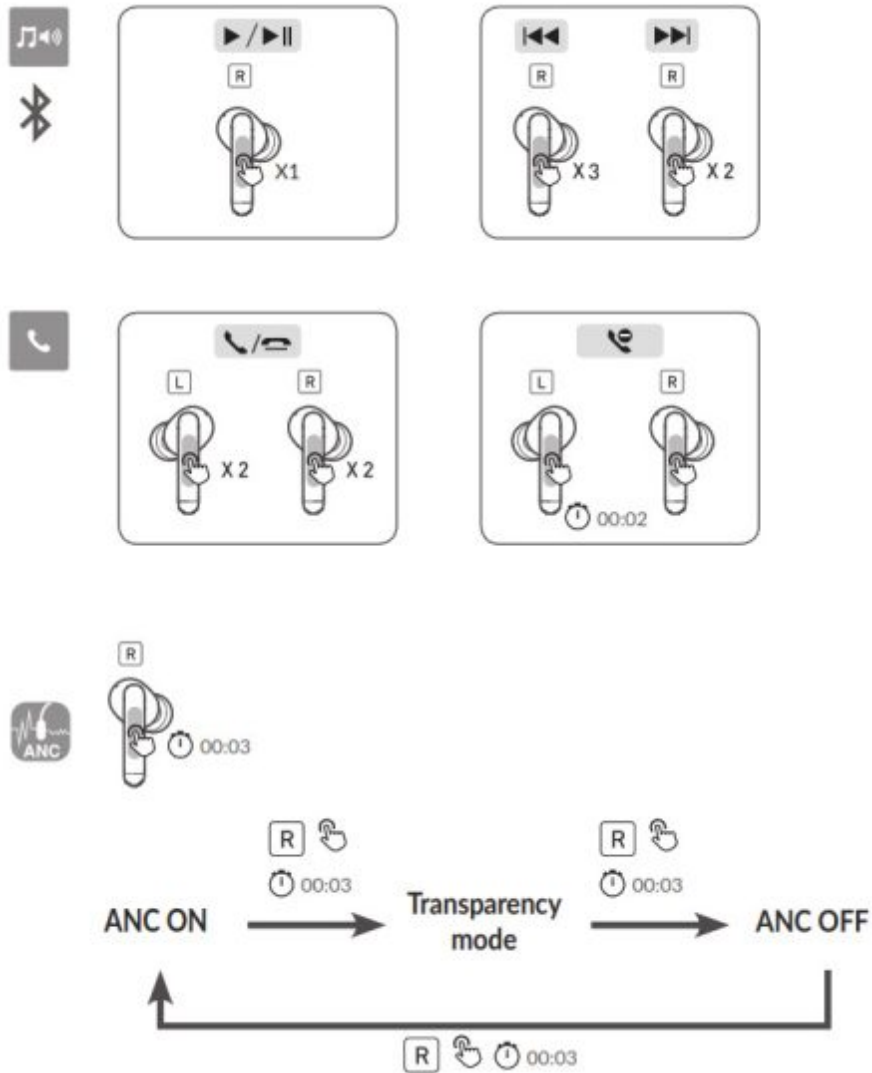



Android 5.0 and above
iOS 10.0 and above

<https://itunes.apple.com/us/app/alcatel-wifi-link/id1456360744?l=zh&ls=1&mt=8&androidLink>

To adjust the noise control features, customize earphone functions, or perform a firmware update, please scan the QR code or search "TCL Connect" to download the app and add TW30 to the device list in the app.

Default gestures



 Google assistant



Say "Hey Google" to activate Google assistant



x 1

Stop google assistant



x 2

Listen to notification



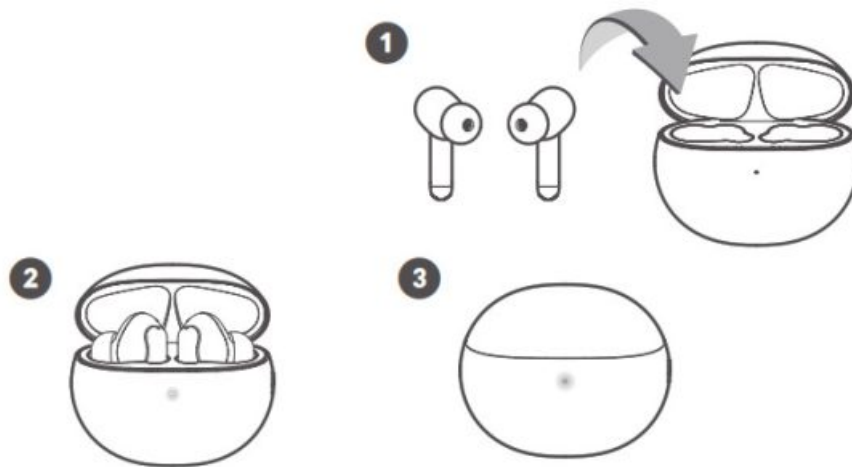
Press and hold to talk to your Google assistant

Wearing Instruction

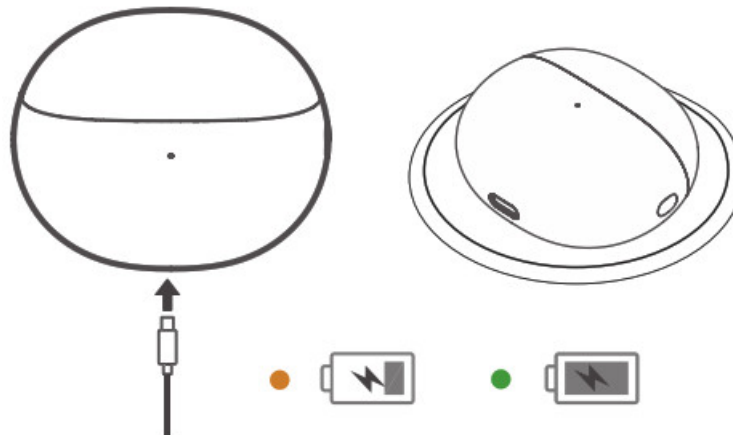


Charging

Charge Earbuds

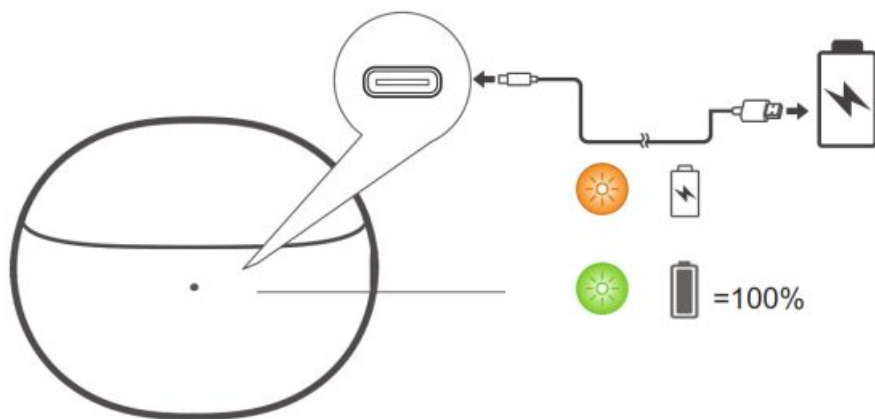


Charge the charging case

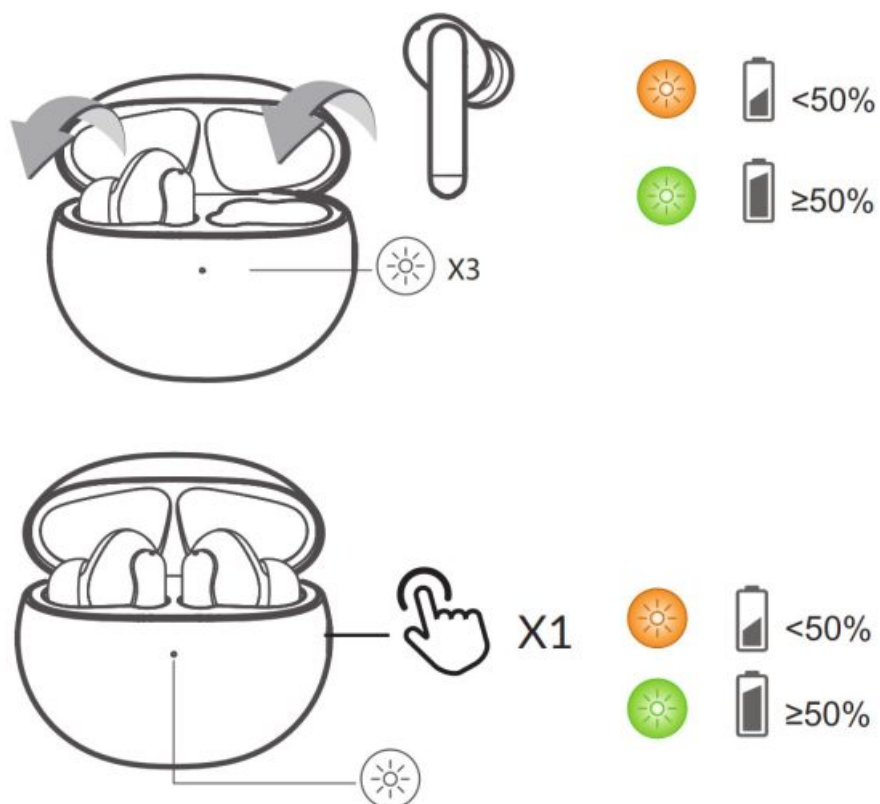


To charge the charging case, use a Type-C charger, or place it on a compatible wireless charger with the bottom facing up.

LED Lights Indications

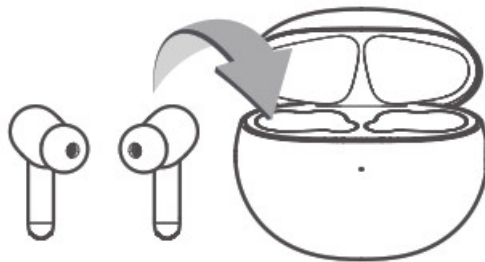


The LED light indicates the charge of the earbuds when you put in or take out the buds. When pressing the button or opening/closing the lid will indicate charge remaining in the case

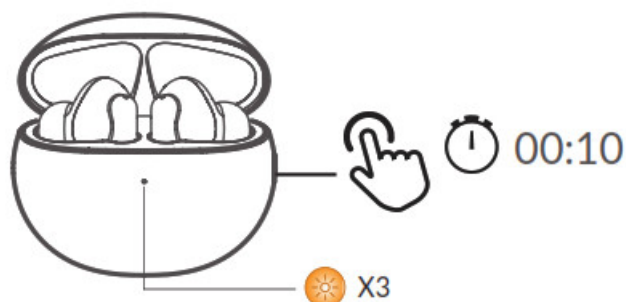


Reset

1



2



For the full user manual in all languages or for help visit: www.tcl.com

2020 © TCL Communication Ltd. All rights reserved.

Bluetooth headset works with any Bluetooth enabled phone or device.

The Bluetooth word mark and logos are registered trademarks owned by Bluetooth SIG, Inc. and any use of such marks by TCL Communication Ltd. is under license. Other trademarks and trade names are those of their respective owners.

FCC Supplier's Declaration of Conformity

Brand name / model number: TCL/TW30

This device complies with part 15 of the FCC Rules. Operation is subject to the following two conditions:

(1) This device may not cause harmful interference, and (2) this device must accept any interference received, including interference that may cause undesired operation.

Suppliers Name: TCT Mobile, Inc.

Suppliers Address (USA): TCT Mobile, Inc., 25 Edelman Suite #200, Irvine, CA 92618

Website: www.tcl.com

FCC rule

This equipment has been tested and found to comply with the limits for a Class B digital device pursuant to part 15 of the FCC Rules. These limits are designed to provide reasonable protection against harmful interference in a residential installation. This equipment generates, uses and can radiate radio frequency energy and, if not installed and used in accordance with the instructions, may cause harmful interference to radio communications. However, there is no guarantee that interference to radio or television reception, which can be determined by turning the equipment off and on, the user is encouraged to try to correct the interference by one or more of the following measures:

- Reorient or relocate the receiving antenna.
- Increase the separation between the equipment and receiver.
- Connect the equipment into an outlet on a circuit different from that to which the receiver is connected.
- Consult the dealer or an experienced radio/ TV technician for help.

Caution: The user is cautioned that changes or modifications not expressly approved by the party responsible for compliance could void the user's authority to operate the equipment.

The earbuds may be damaged if not charged for 2 months.



WARNING: Cancer and Reproductive Harm – www.P65Warnings.ca.gov

Left earphone:
FCC ID: 2ACCJB144
IC: 9238A-0108
HVIN: TW30L

Right earphone:
FCC ID: 2ACCJB145
IC: 9238A-0109
HVIN: TW30R

CAN ICES-3(B)/NMB-3(B)



Documents / Resources



[TCL TW30 Move Audio S600](#) [pdf] User Guide
B145, 2ACCJB145, B144, 2ACCJB144, TW30, Move Audio S600

References

- [P65Warnings.ca.gov](http://www.P65Warnings.ca.gov)
- [TCL USA | Enjoy More](#)

[Manuals+.](#)