



## TW20 S200 Move Audio TCL User Guide

[Home](#) » [TCL](#) » TW20 S200 Move Audio TCL User Guide 

### Contents

- [1 TW20 S200 Move Audio TCL](#)
- [2 What's in the box](#)
- [3 Activation](#)
- [4 Pairing](#)
- [5 Wearing Instruction](#)
- [6 Connect to other devices](#)
- [7 Charging](#)
- [8 Charge EarbudsCharge Charging CaseTouch Control](#)
- [9 LED Lights Indications](#)
- [10 Reset](#)
- [11 Documents / Resources](#)
- [12 Related Posts](#)

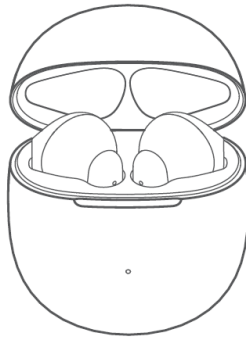
# TCL

**TW20 S200 Move Audio TCL**



## What's in the box

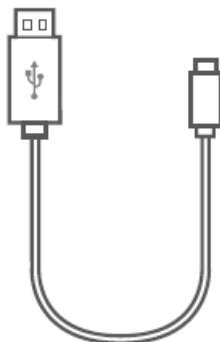
### Charging Case & Earbud



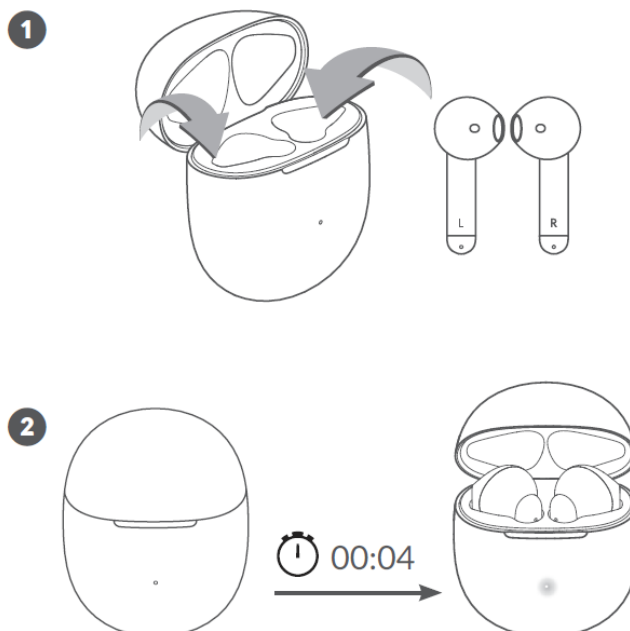
### Quick start guide



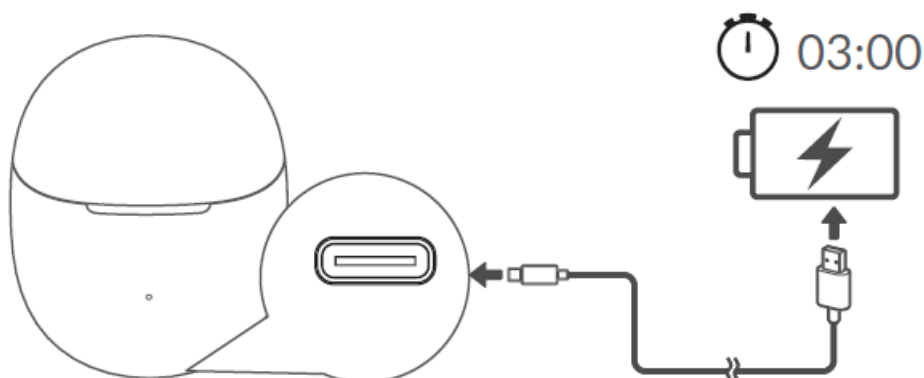
### USB cable



## Activation

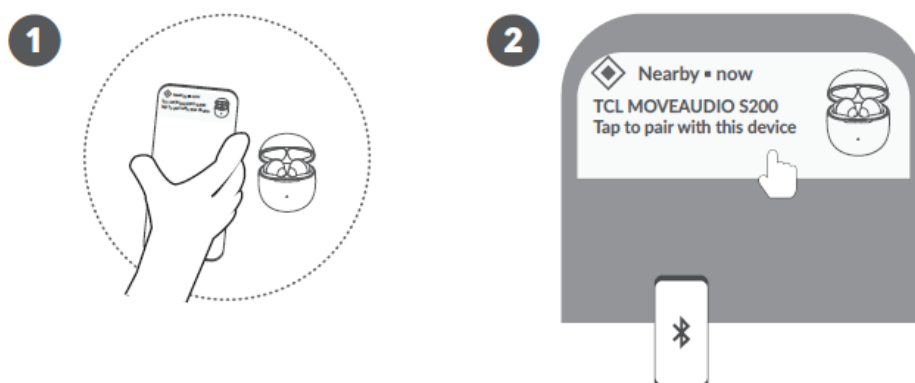


If earbuds cannot be activated successfully. Please charge it for a while and then repeat the activation process again.

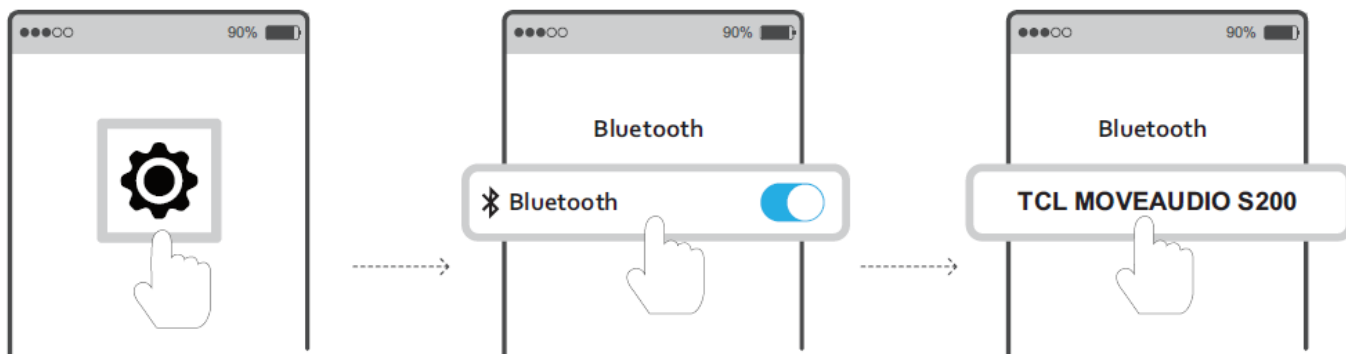


## Pairing

### Google Fast Pair



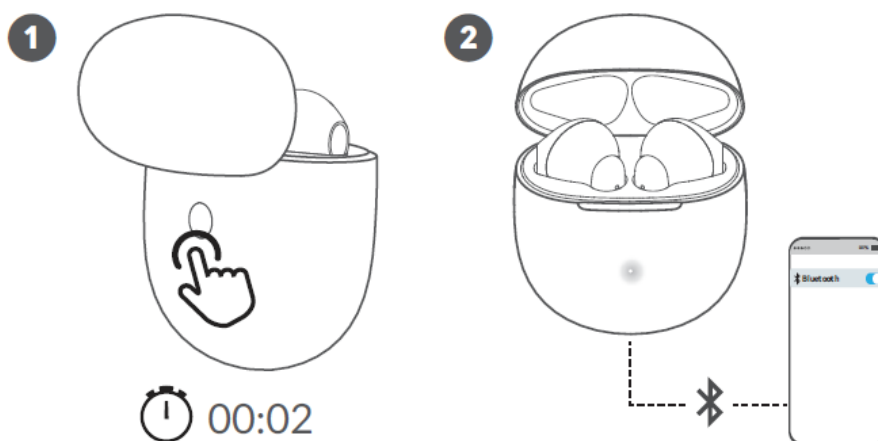
### Manual Pairing



## Wearing Instruction

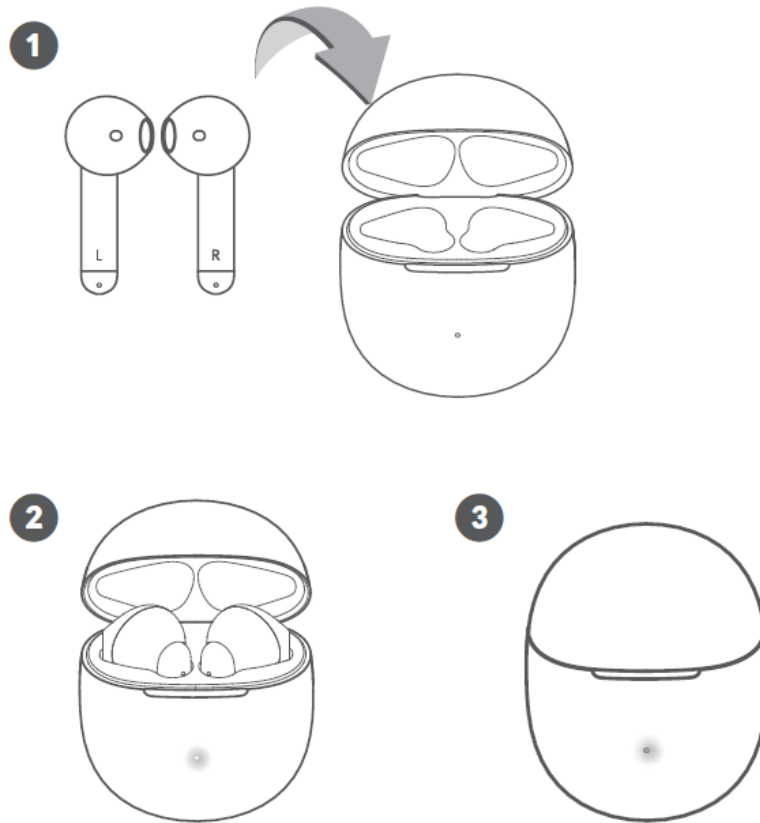


## Connect to other devices

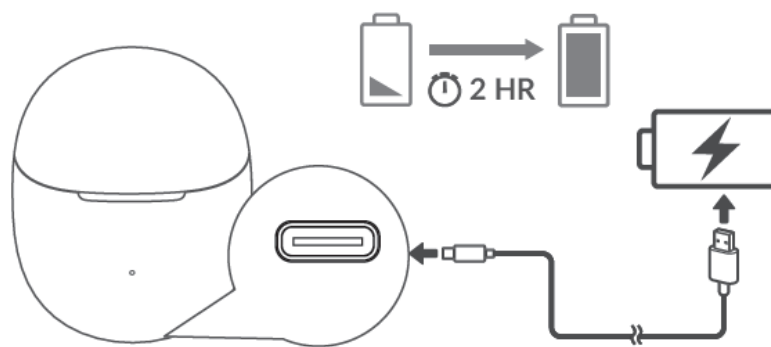


## Charging

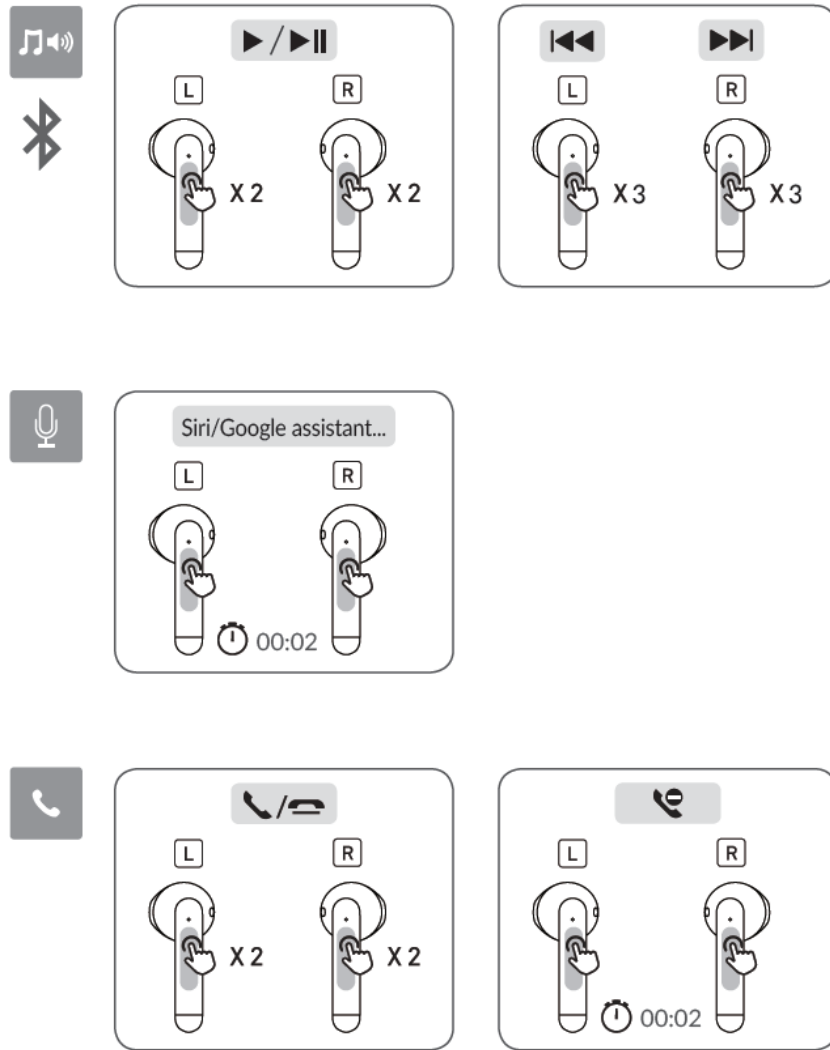
## Charge Earbuds



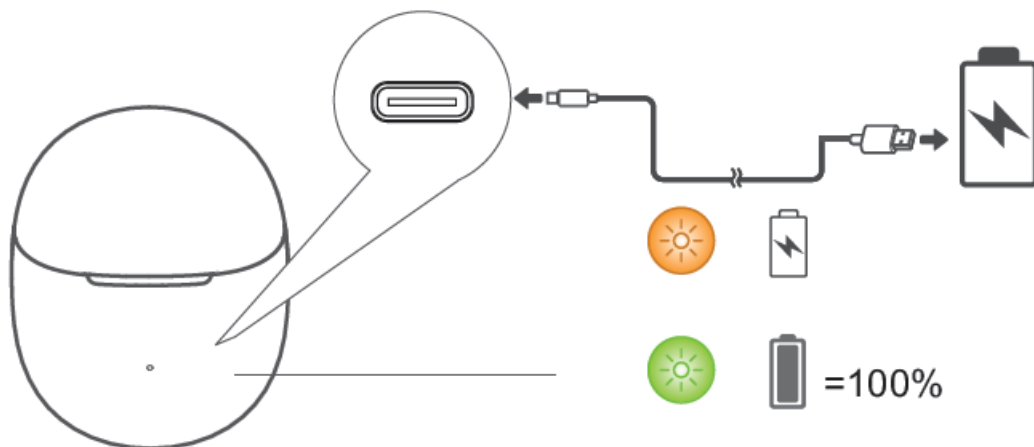
## Charge Charging Case



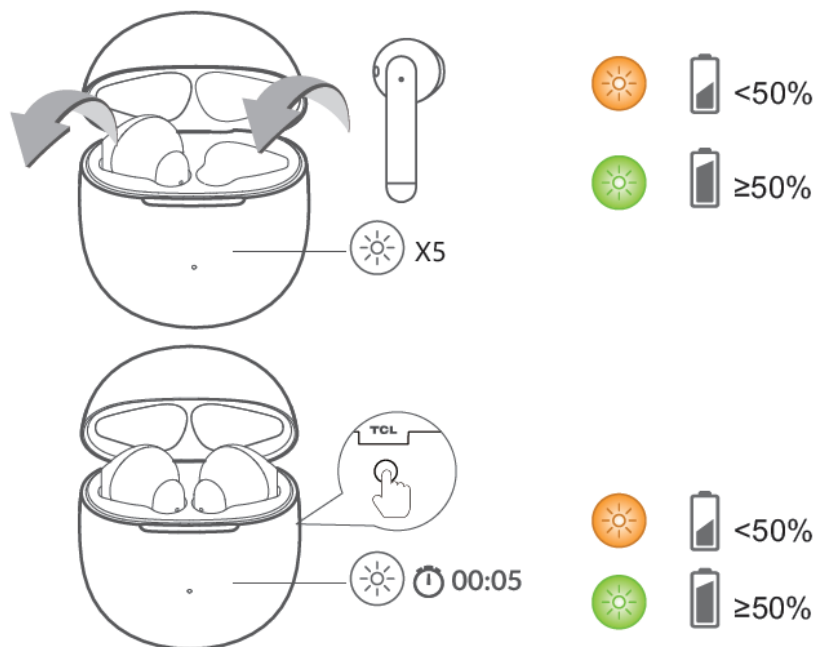
## Touch Control



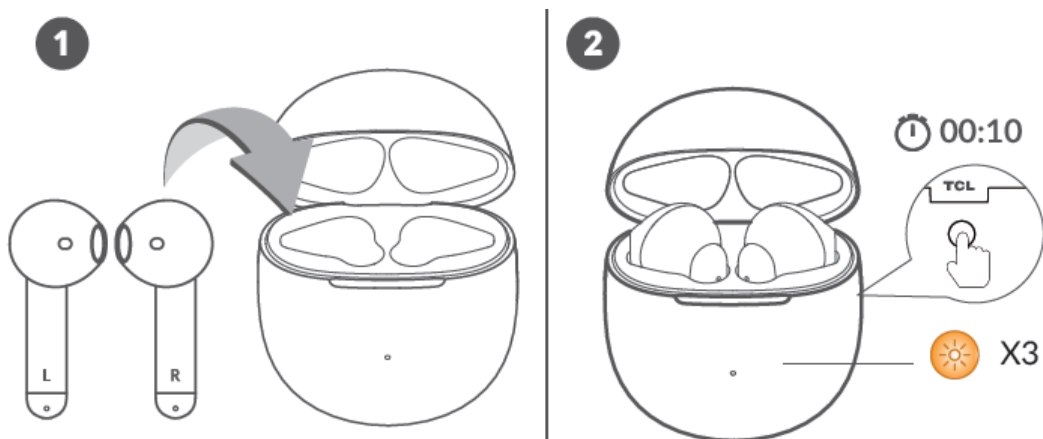
## LED Lights Indications



The LED light indicates the charge of the earbuds when you put in or take out the buds. When pressing the button or opening/closing the lid will indicate charge remaining in the case



## Reset



## Documents / Resources



[TCL TW20 S200 Move Audio TCL](#) [pdf] User Guide  
TW20, S200 Move Audio TCL