



TCL TS8111 2.1 Channel Sound Bar with Dolby Atmos and Dual Built-in Subwoofers User Guide

[Home](#) » [TCL](#) » TCL TS8111 2.1 Channel Sound Bar with Dolby Atmos and Dual Built-in Subwoofers User Guide



Contents

- [1 TCL TS8111 2.1 Channel Sound Bar with Dolby Atmos and Dual Built-in Subwoofers](#)
- [2 WHAT'S IN THE BOX](#)
- [3 INSTRUCCION](#)
- [4 MOUNTING](#)
- [5 INSTALLATION](#)
- [6 Indications](#)
- [7 FAQ](#)
- [8 Documents / Resources](#)
- [9 Related Posts](#)

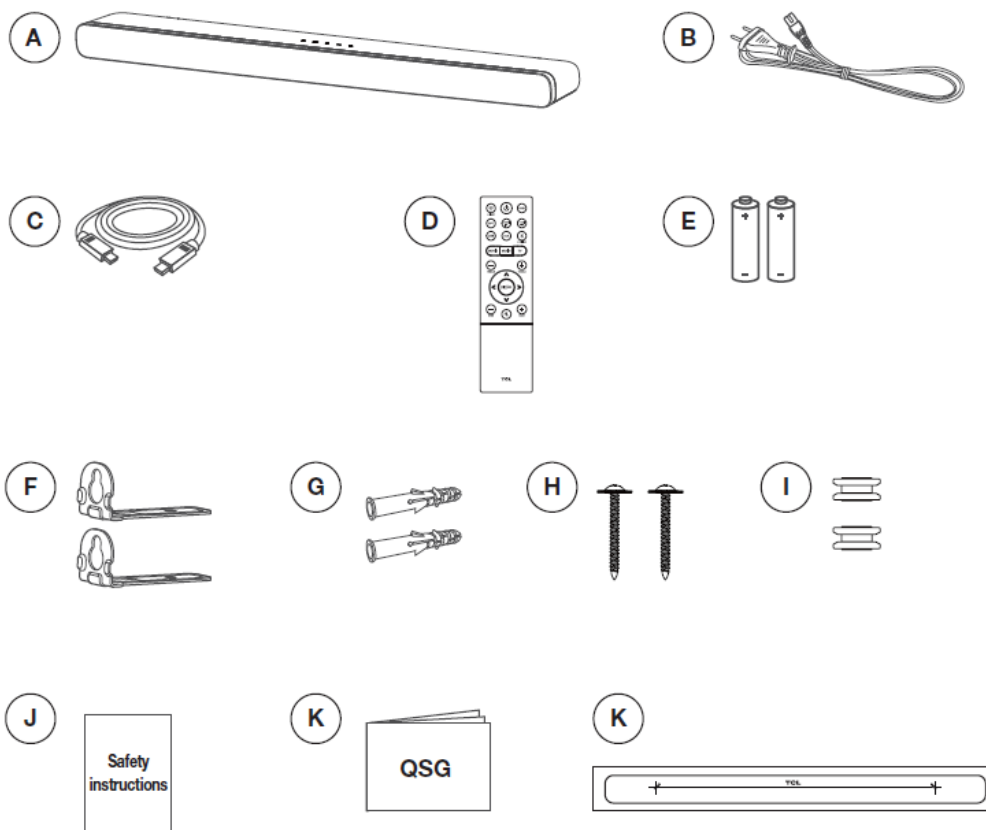
TCL

TCL TS8111 2.1 Channel Sound Bar with Dolby Atmos and Dual Built-in Subwoofers

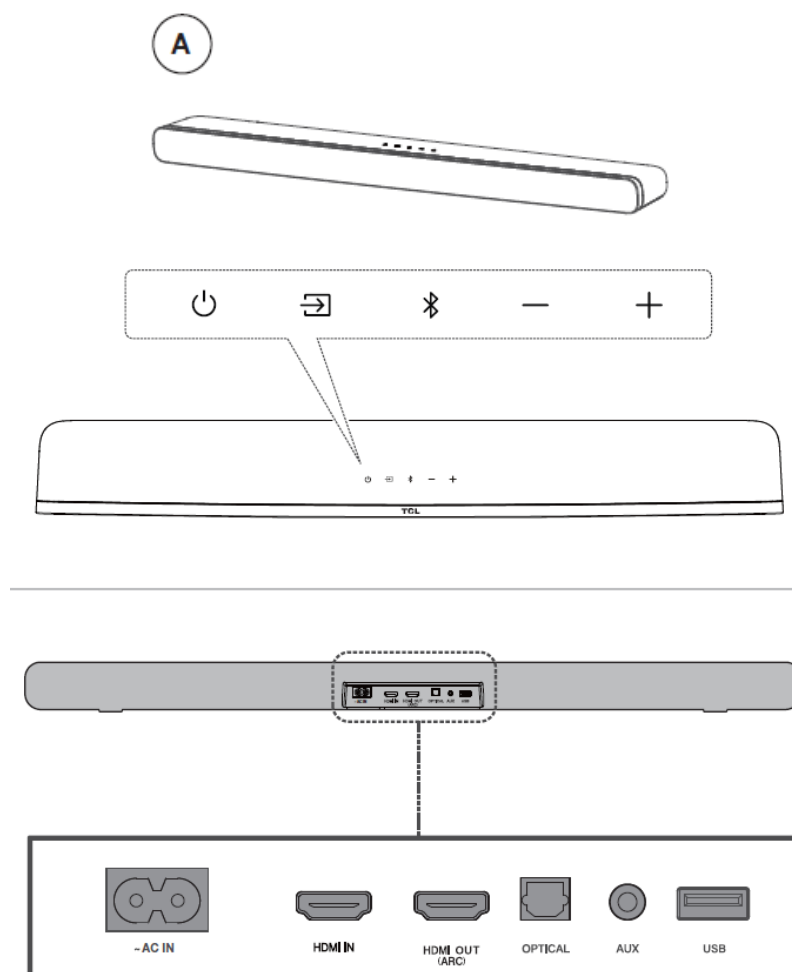


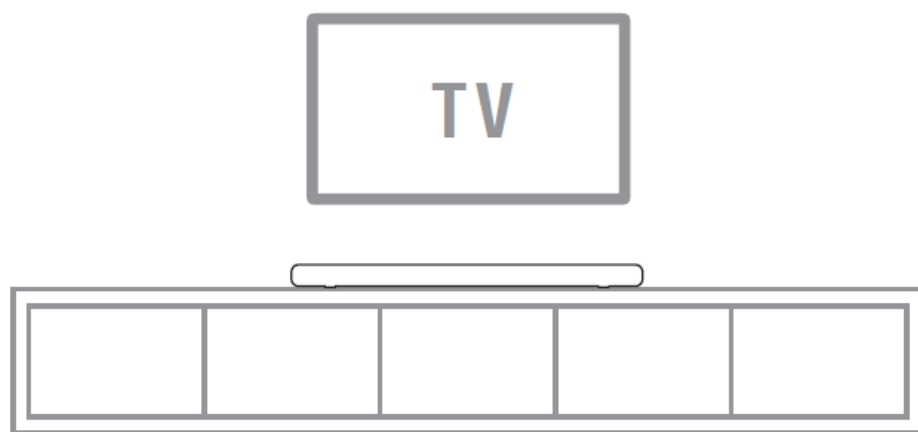
WHAT'S IN THE BOX

Make sure you read all the safety information before you use this product.

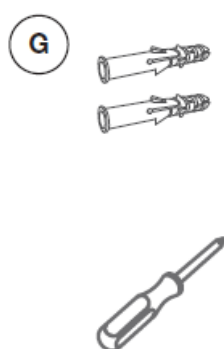
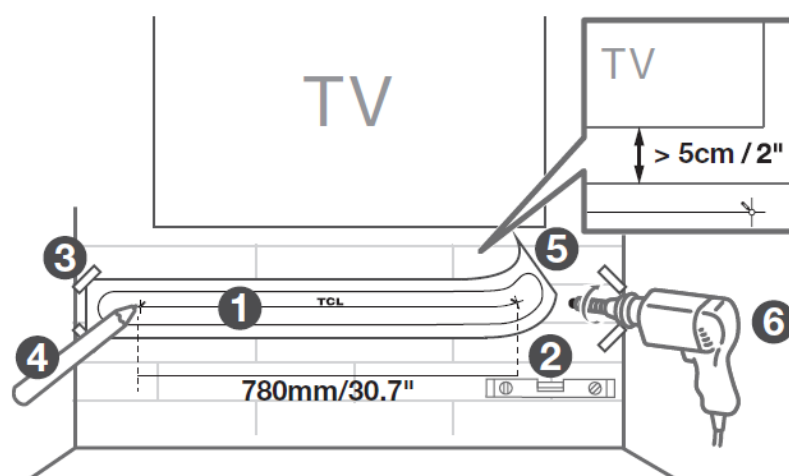
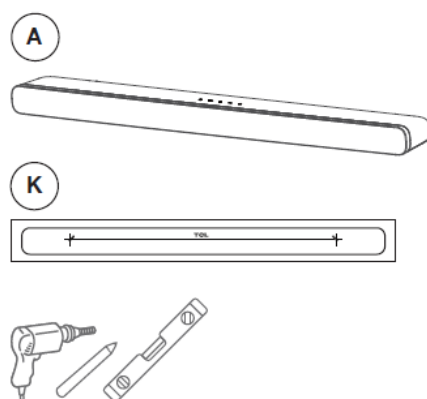


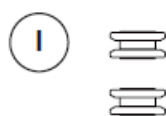
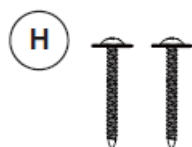
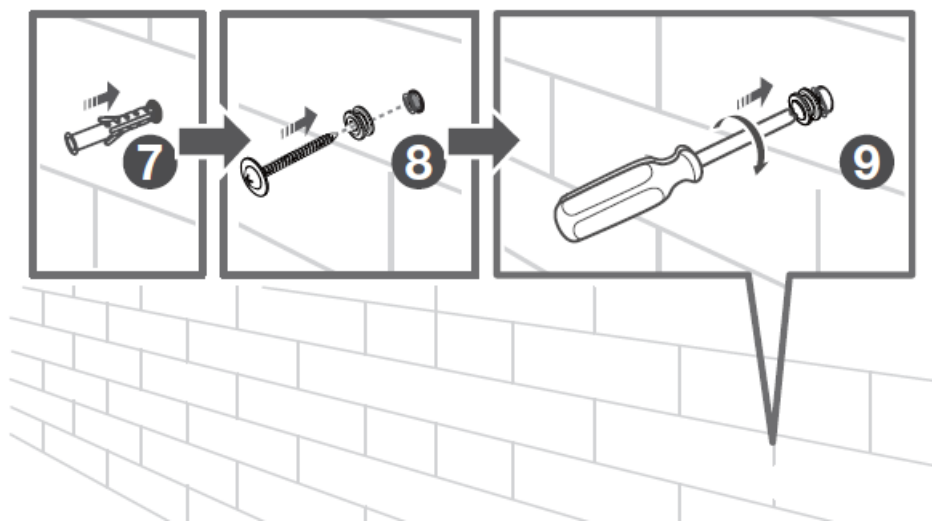
INSTRUCION

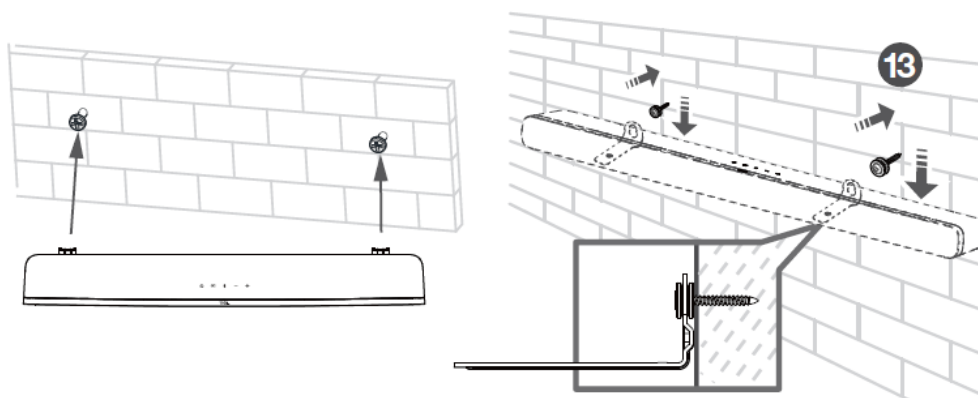
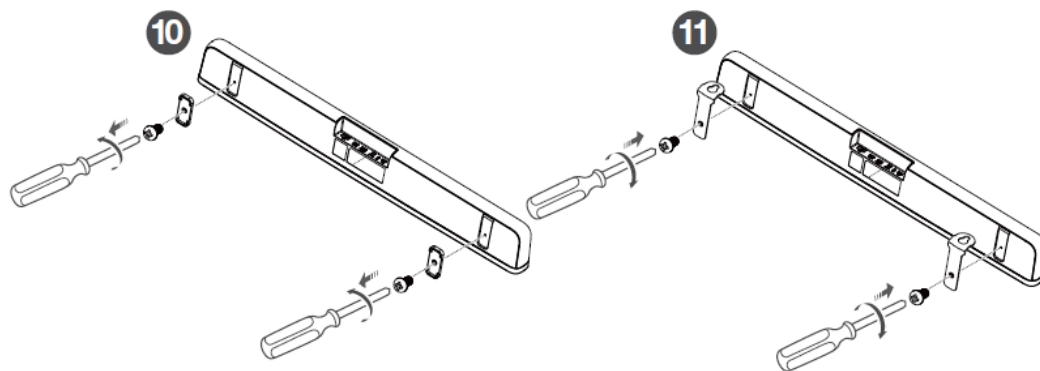




MOUNTING



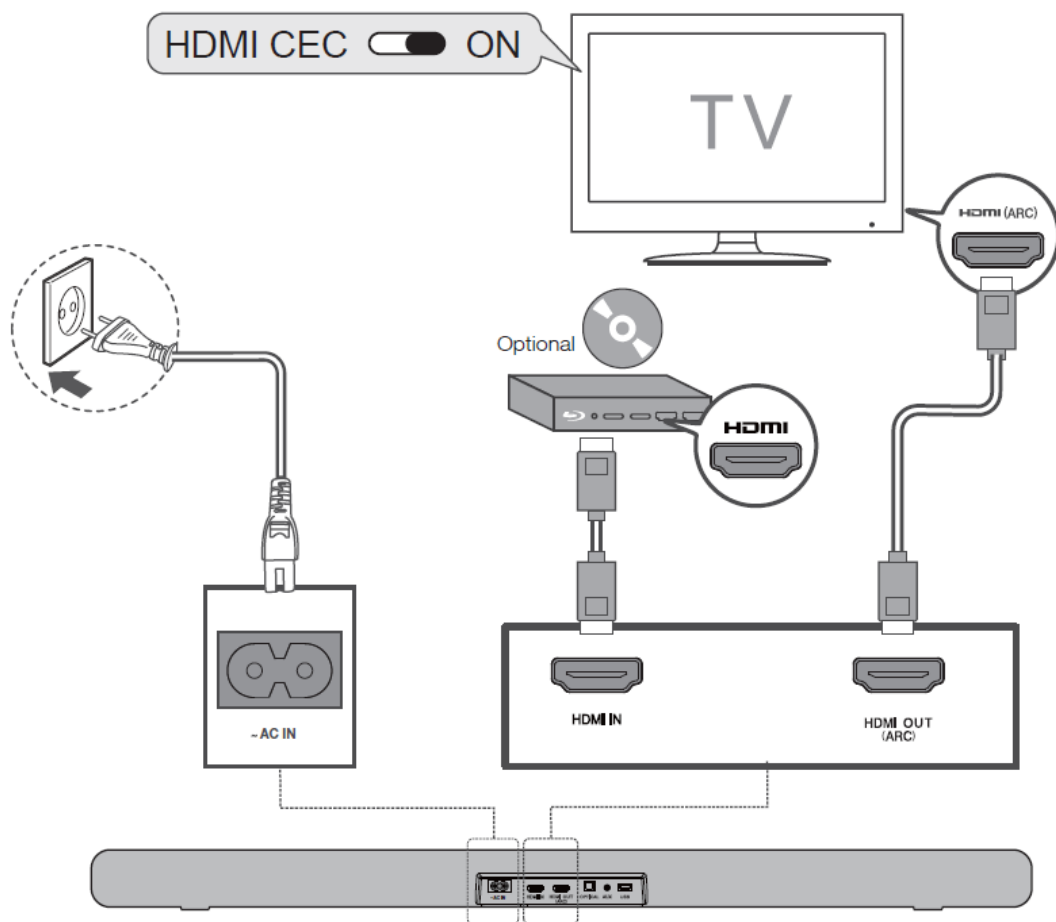




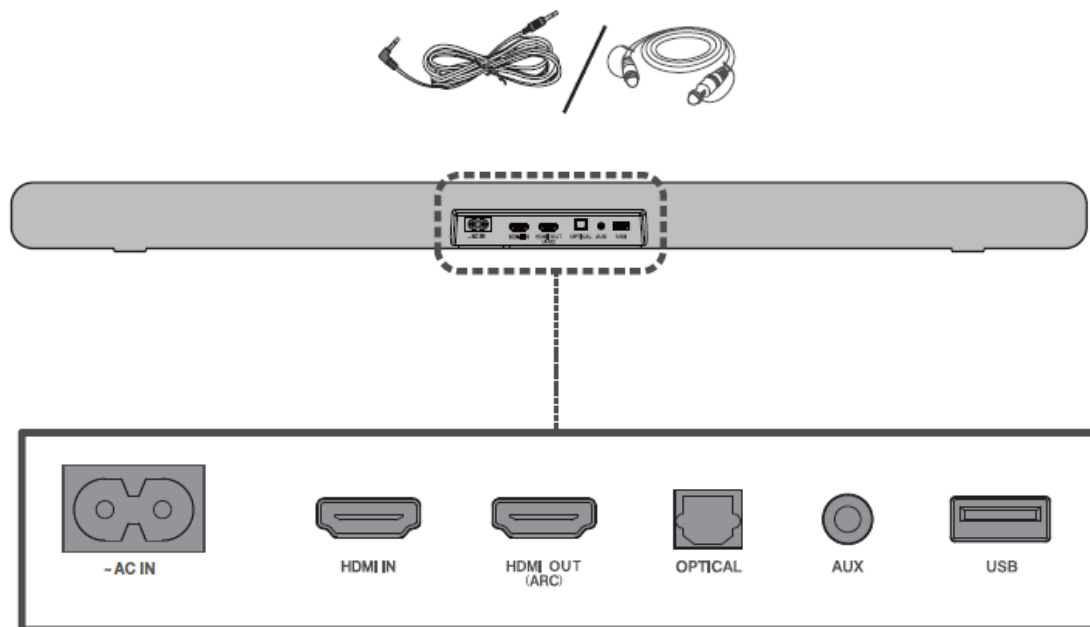
INSTALLATION

The most preferred connection options:



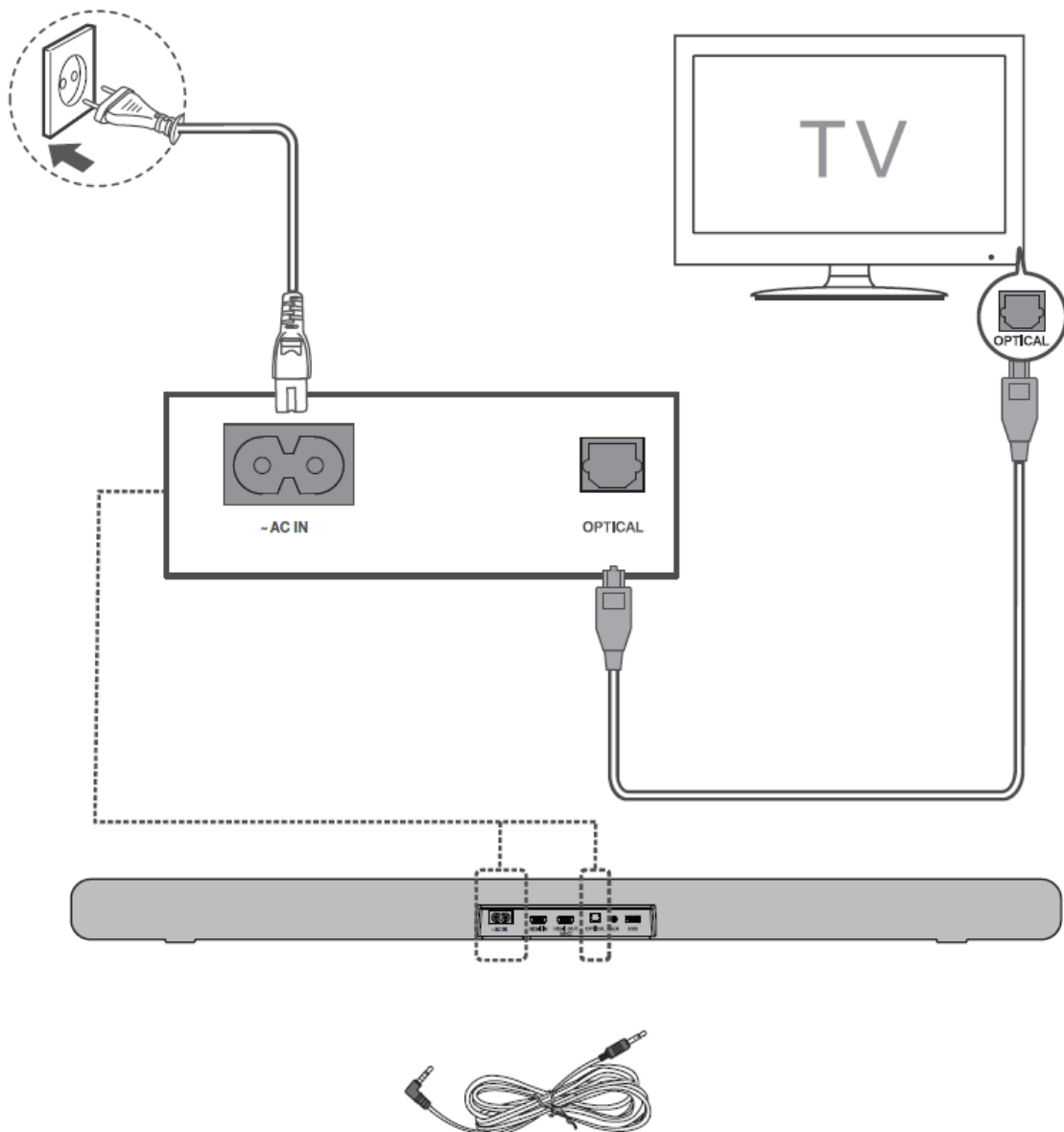


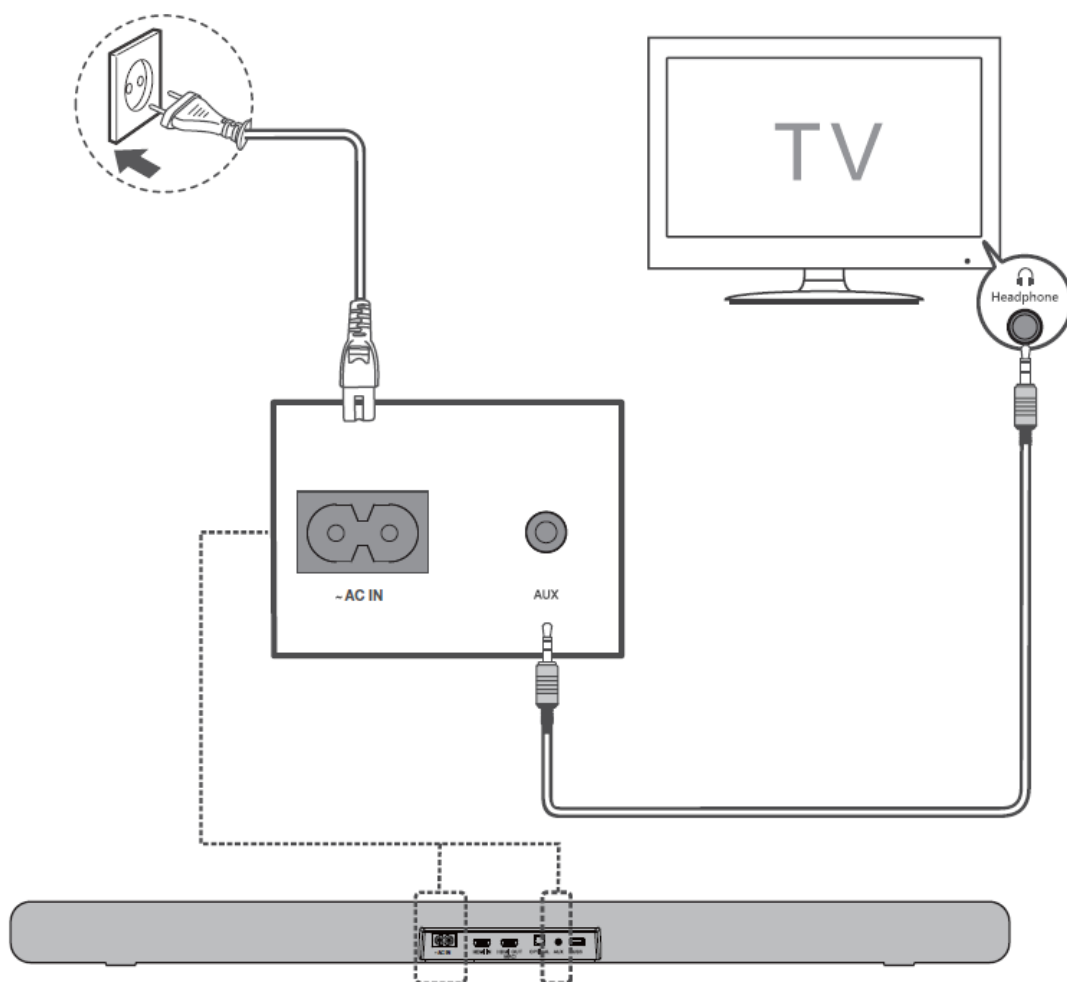
Cables are sold separately.



Optical connection

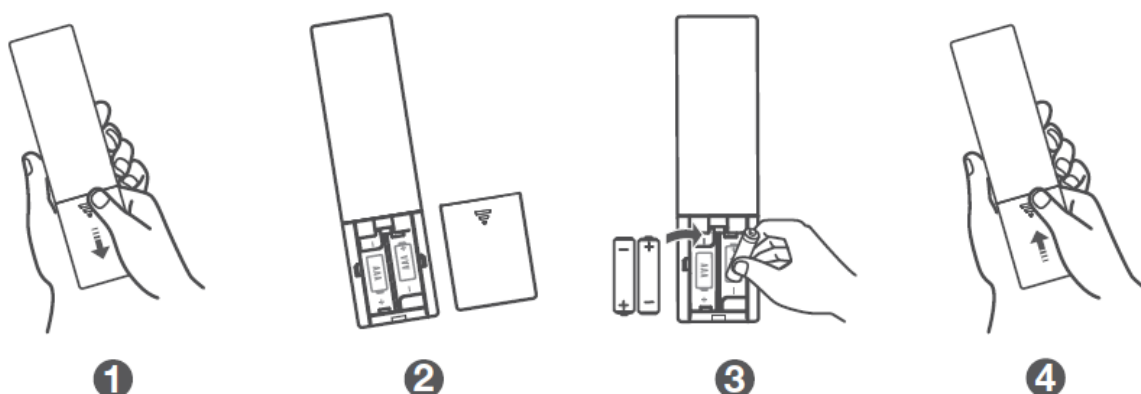


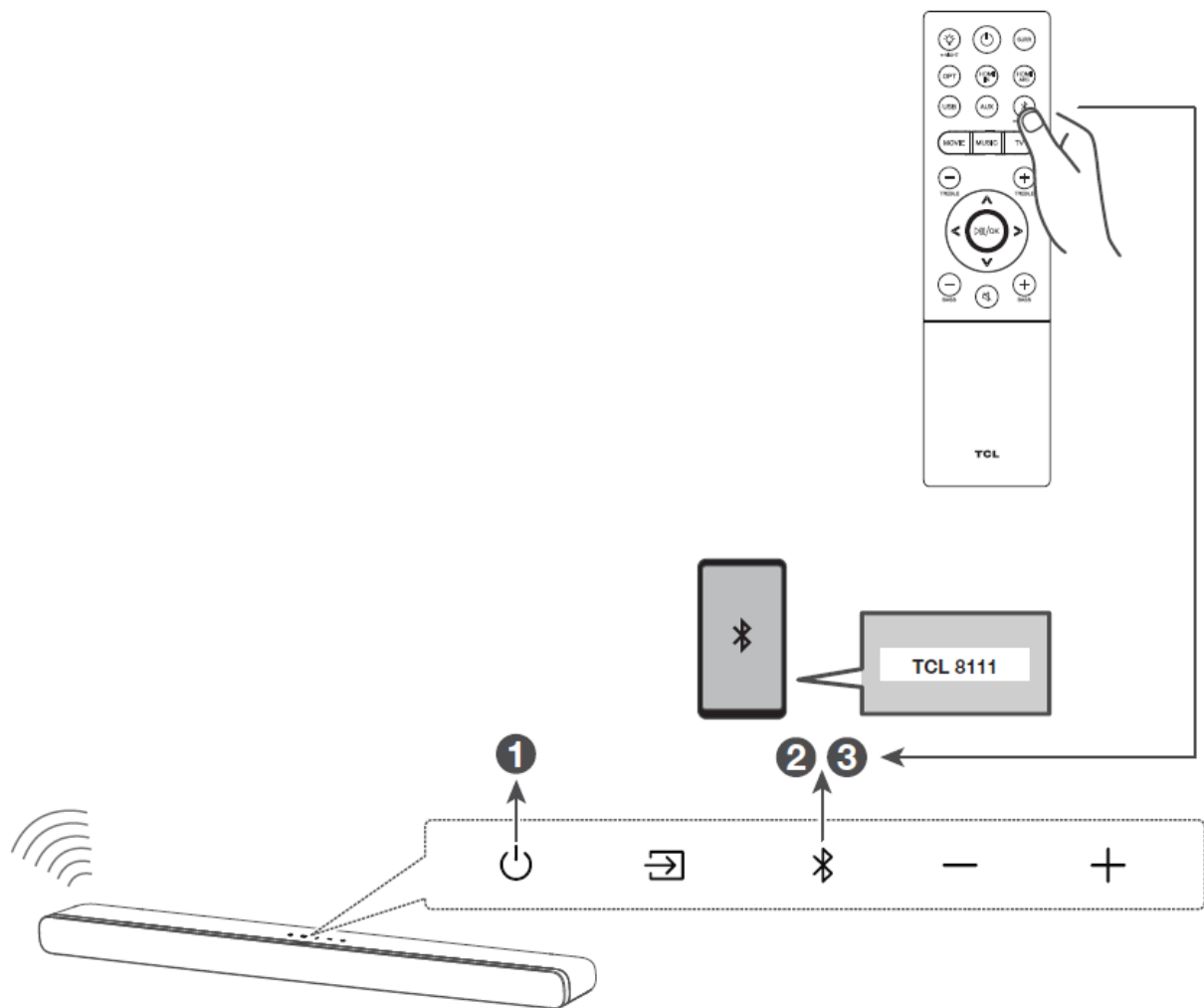




REMONTE

Battery type: 1.5V AAA Alkaline battery x 2





Indications

LED Indications	Sound Bar status
SLEEP	Enter sleep mode (LED flashes slowly)
STDBY	Enter standby mode (LED keeps lighting on)
HDMI1 IN	HDMI IN
HDMI2 ARC	HDMI ARC
USB	USB
BT	BT
PAIR	In pairing mode
AUX	AUX
OPT	OPT
DIM 1 / DIM 2	Brightness of the screen
SURR ON / SURR OFF	Surround on / off
V 22	Volume
movie/music / tv	Equalizer effect
tre-3 tre+3	Treble + / –
bas-3 bas+3	Bass + / –
night	In night mode
PCM AUDIO ... DOLBY ATMOS	Audio format detected

FAQ

Does this Sound Bar work with any TV?

Yes, the Sound Bar is compatible with any TV that has one of the ports below:

1. HDMI supporting ARC (preferred)
2. Optical audio output (TOSLink)
3. Headphone output

When the Sound Bar and TV are both on, there is an echo effect.

If you use HDMI-ARC connection, please check if the HDMI-CEC feature of your TV is turned on. This feature may be called T-Link, Anynet+, SimpLink, BRAVIA Link, EasyLink or VIERA Link*.

If using optical or AUX connection, simply mute the TV speaker.

How many sound modes are available?

Four sound modes – Movie, Music, TV and Night.

All technology names mentioned are the trademarks or registered trademarks of their respective companies.


The Adopted Trademarks HDMI, HDMI High-Definition Multimedia Interface, and the HDMI Logo are trademarks or registered trademarks of HDMI Licensing Administrator, Inc. in the United States and other countries.

The Bluetooth® word mark and logos are registered trademarks owned by Bluetooth SIG, Inc. and any use of such marks by TTE Corporation is under license. Other trademarks and trade names are those of their respective owners.

Dolby, Dolby Atmos, and the double-D symbol are registered trademarks of Dolby Laboratories Licensing Corporation. Manufactured under license from Dolby Laboratories. Confidential unpublished works. Copyright © 2012-2020 Dolby Laboratories. All rights reserved.

www.tcl.com

Documents / Resources

	<p>TCL TS8111 2.1 Channel Sound Bar with Dolby Atmos and Dual Built-in Subwoofers [pdf]</p> <p>User Guide</p> <p>TS8111, 2.1 Channel Sound Bar with Dolby Atmos and Dual Built-in Subwoofers, Dual Built-in Subwoofers, Built-in Subwoofers, Subwoofers, 2.1 Channel Sound Bar, Sound Bar</p>
---	---