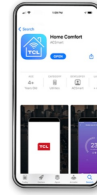


TCL MN18Z0 Control Your Ac Home App



TCL MN18Z0 Control Your Ac Home App User Guide

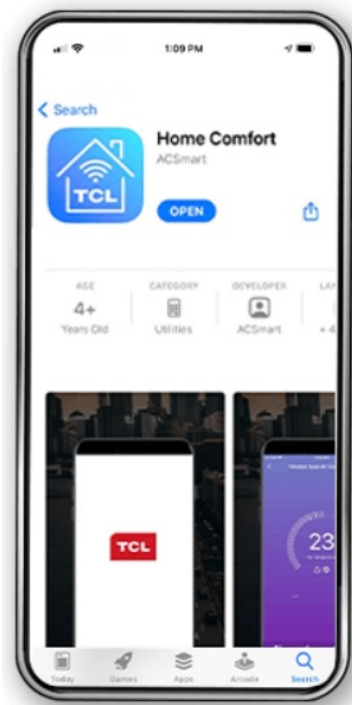
[Home](#) » [TCL](#) » TCL MN18Z0 Control Your Ac Home App User Guide 

Contents

- [1 TCL MN18Z0 Control Your Ac Home App User Guide](#)
- [2 What Can TCL HOME Provide You](#)
- [3 How to Connect Your Device](#)
- [4 Voice Control](#)
- [5 Precautions](#)
- [6 References](#)
- [7 Related Posts](#)

TCL

TCL MN18Z0 Control Your Ac Home App User Guide



What Can TCL HOME Provide You



Control your AC with your phone anywhere.



Set a comfortable temperature before you are home.



Operate your AC by voice commands.



Contact TCL customer service quickly in the TCL HOME.

Tips

You can also search for “TCL HOME” in App Store or Google Play to download and install.

How to Connect Your Device

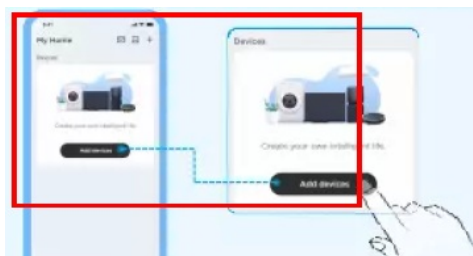
Step 1

Download the TCL HOME app and register an account to log in.



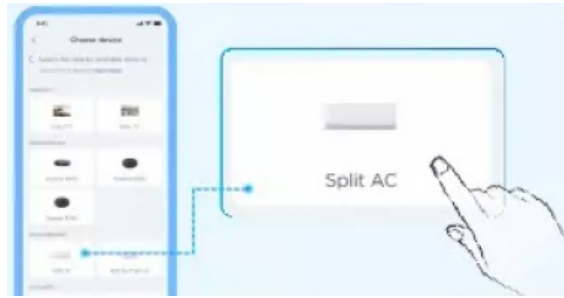
Step 2

Click the “Add devices” button to enter the device list page.



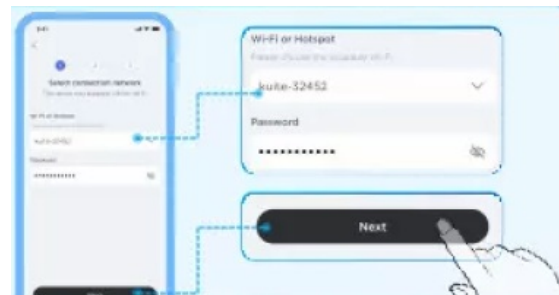
Step 3

Select your device, and follow the instructions on the app to turn on the device's WIFI.



Step 4

Enter the network connection page, select WIFI (2.4G), enter the password, and click OK to connect.



Voice Control

1. After the device is connected to the network, please go to the profile page and click "Voice Assistant" to enter the voice operation settings.
2. Select your favorite voice assistant (Alexa or Google Assistant) to establish connection.
3. Once the connection is successful, TCL HOME will display a voice operating guide.

Precautions

- If the network connection fails, please reset the device and try again.
- When connecting to the Internet, please make sure that your Bluetooth and
- WIFI are turned on and the WIFI has Internet access.
- Place the mobile phone as close to the device as possible during the network connection.
- Make sure the phone is not in the power-saving mode.
- The WIFI connection only supports the 2.4GHz frequency band network and does not support the 5GHz network.

Tips

The features are among regions. Please refer to the app display for details. If you encounter any problems in using the air conditioner, you can contact TCL customer service at the "Support" section in the TCL HOME app.

Download PDF: [TCL MN18Z0 Control Your Ac Home App User Guide](#)

References

- [User Manual](#)

[Manuals+](#), [Privacy Policy](#)