



TCL T609M Smartphone User Guide

[Home](#) » [TCL](#) » TCL T609M Smartphone User Guide 

TCL T609M Smartphone



Contents

- [1 Welcome to TCL](#)
- [2 Your TCL phone](#)
- [3 Set up your TCL phone](#)
- [4 Home screen](#)
- [5 Messages](#)
- [6 Gmail](#)
- [7 CUSTOMER SUPPORT](#)
- [8 Documents / Resources](#)
 - [8.1 References](#)
- [9 Related Posts](#)

Welcome to TCL

Check out the TCL website at www.tcl.com for tutorials and answers to frequently asked questions, and to download the User Manual.

Service Hours

Mon-Friday 10am-11pm (EST)

Saturday: 11am-10pm (EST)

Closed on Sundays and US Federal Holidays

Update your phone's software

Go to Settings > System > System Update to check software updates.

Back up your personal data

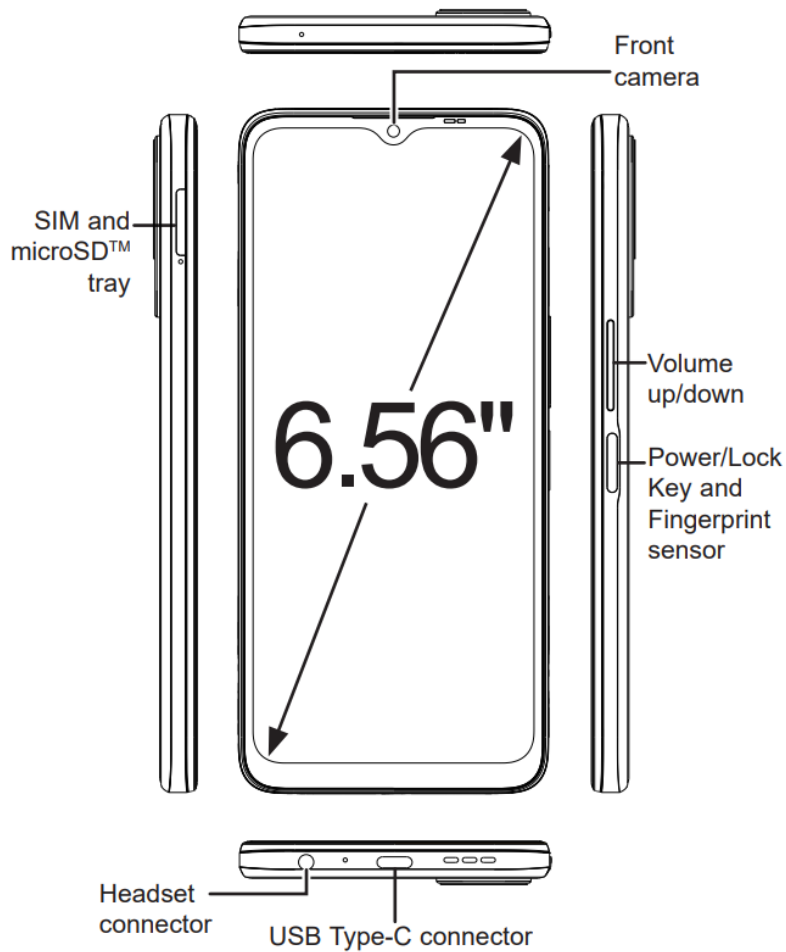
Go to Settings > System > Backup > Back up to Google Drive and turn it on.

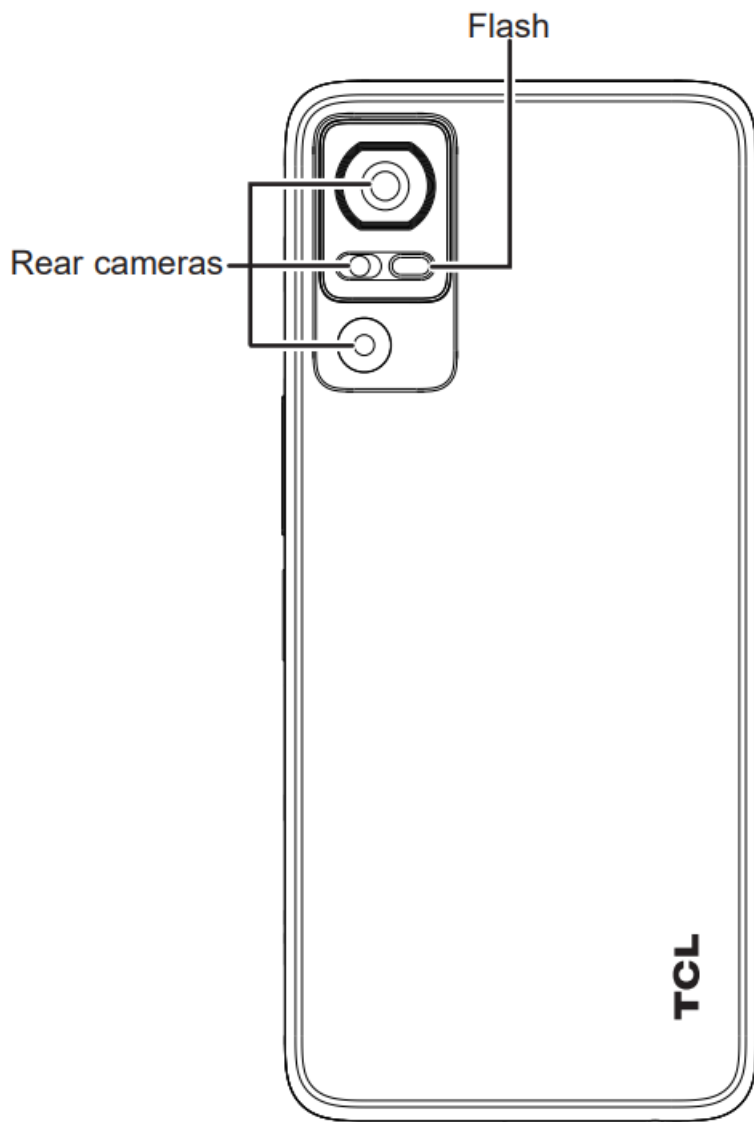
Reset your phone

Go to Settings > System > Reset > Erase all data (factory reset) > Erase all data.

Your TCL phone

Keys and connectors

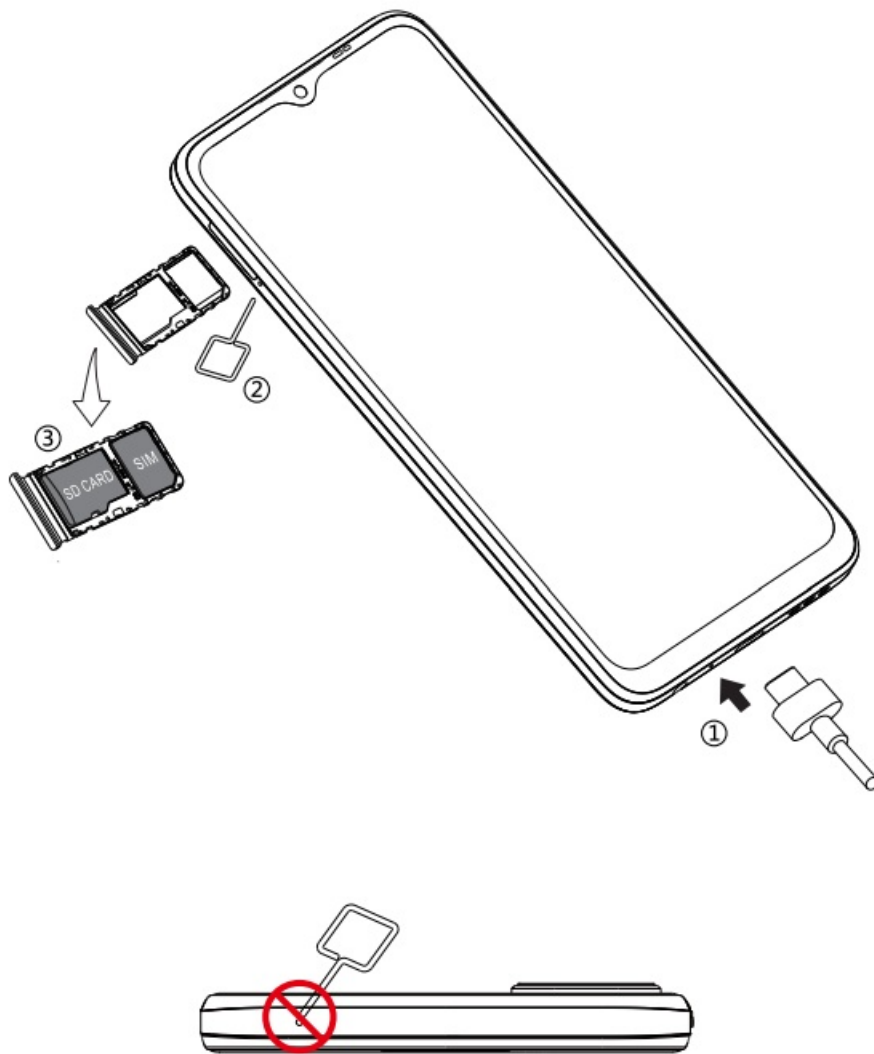




Set up your TCL phone

- ① Your new phone is partially charged. Charge the battery by using the USB-C cable and charger provided.
- ② Use the provided SIM pin to open the SIM tray.
- ③ Place the Nano SIM card and/or microSDTM card into the tray, then slide the SIM tray into the slot.

Note: microSDTM cards are sold separately. Only use Nano SIM cards with your phone.




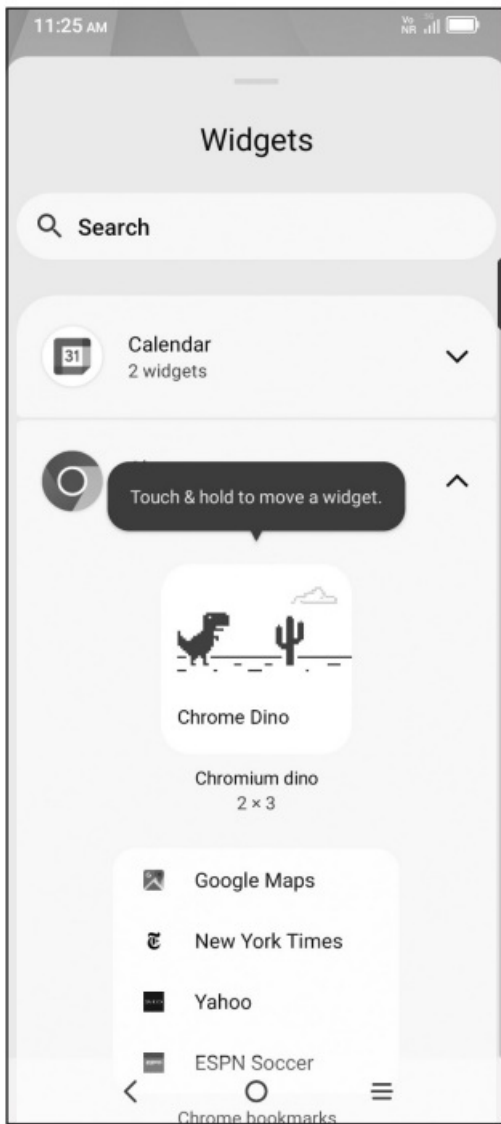
Caution: Do not insert the SIM pin into the small holes on top or bottom of the phone.

Home screen

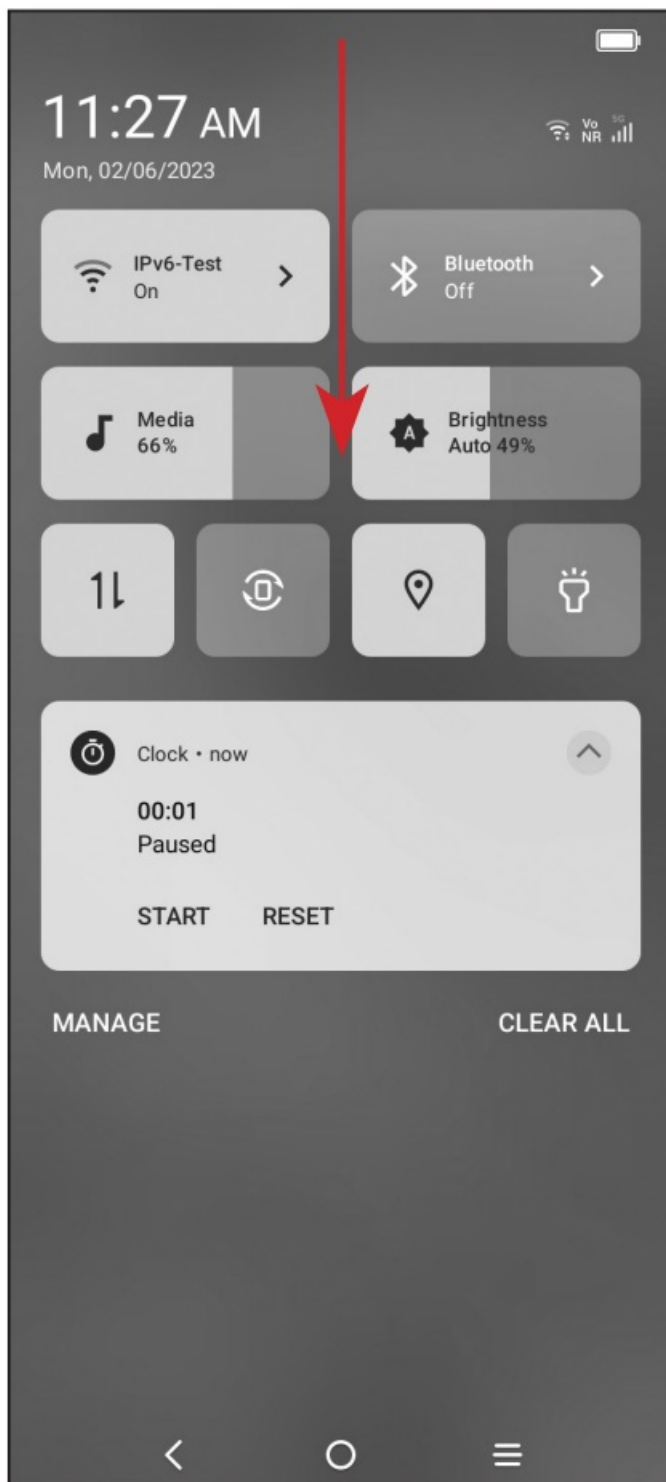
You can bring all of the items that you use most frequently (applications, folders, widgets) to your Home screen for quick access.



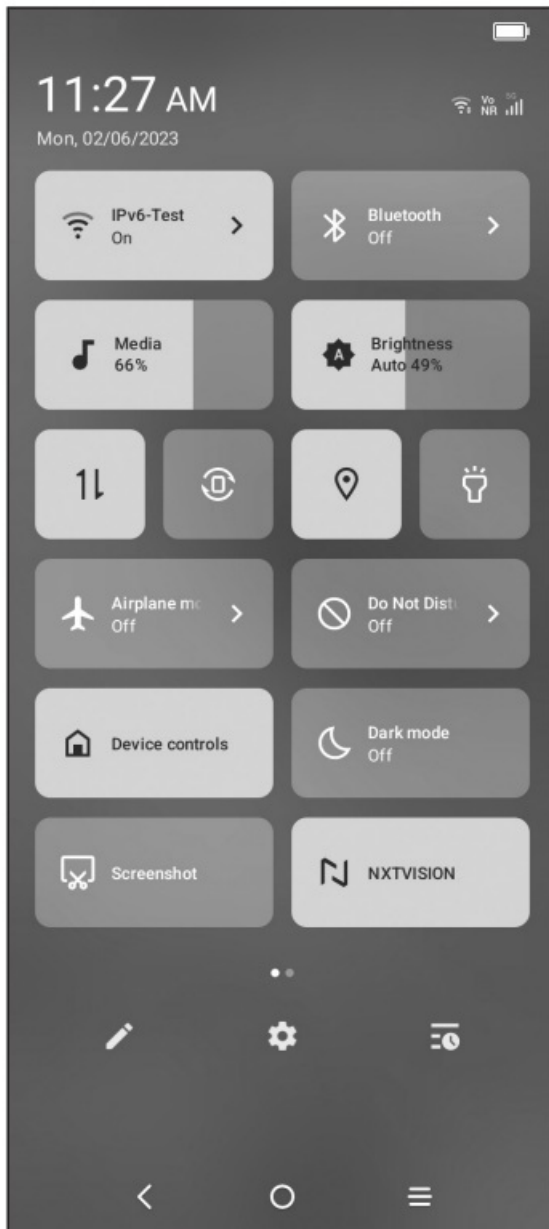
Tapping Home  always takes you back to the main Home screen.



Expand your Home screen with widgets and more personalization.



Swipe down from the Status bar to view the Notification panel and access all pending notifications. Tap on the Notification to open the message.

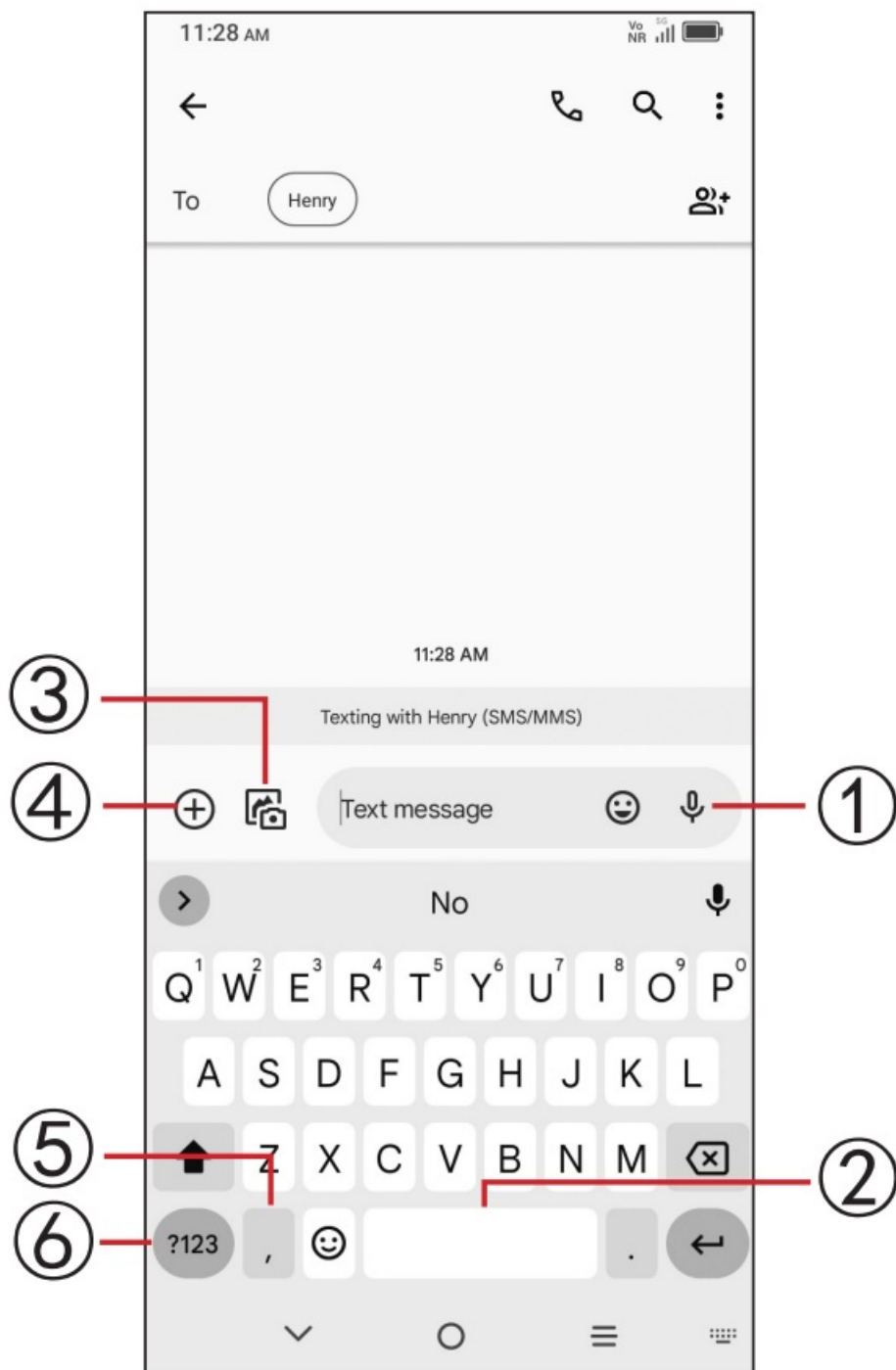


Swipe down again to view Quick Access settings options. Tap  to access the complete Settings menu.

Messages

Create, edit, send, and receive text (SMS) and media (MMS) messages.

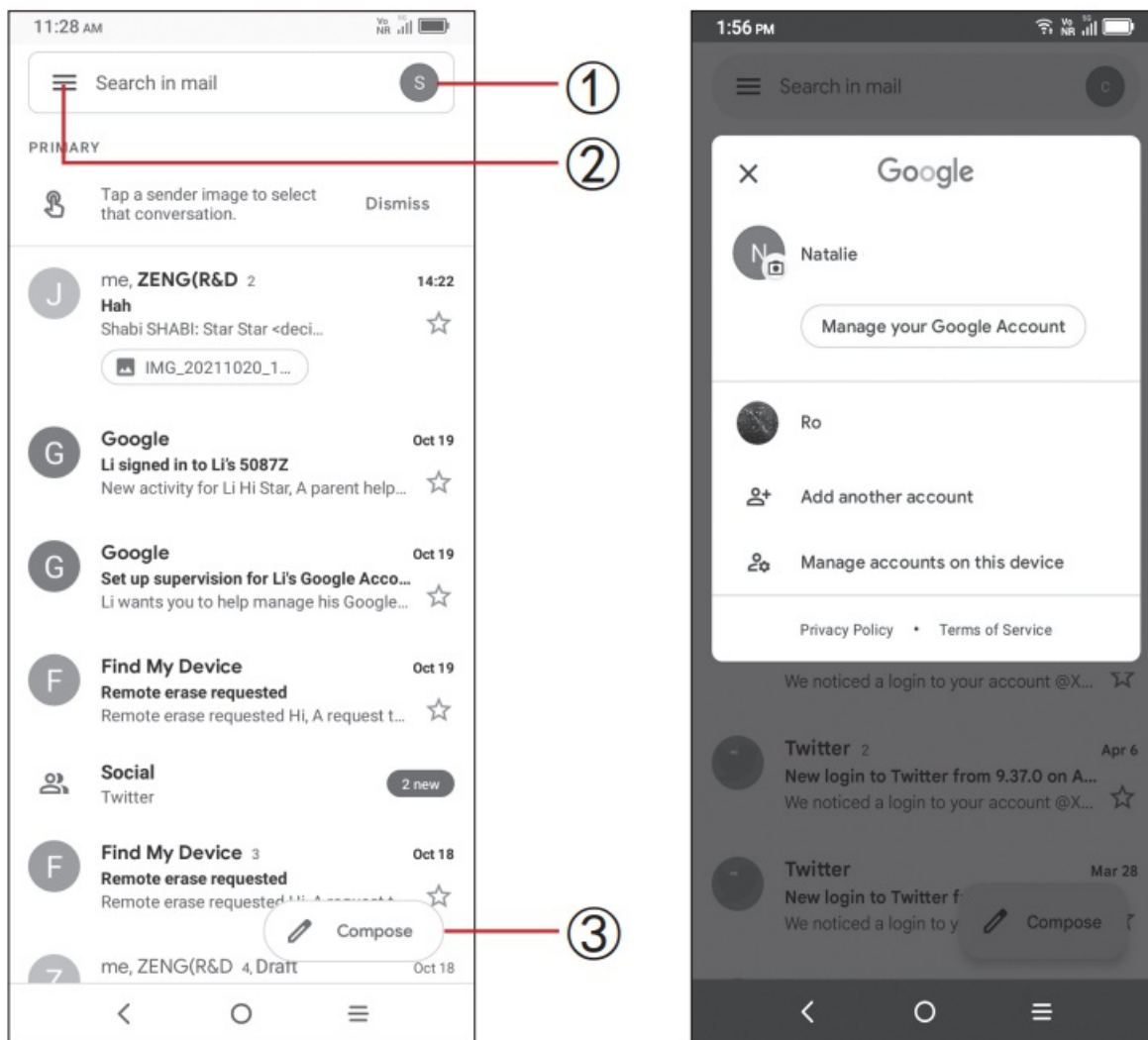
A SMS will be converted to MMS automatically when media files (such as image, video, or audio) are attached, when a subject is added to the message, or an email address is used for a recipient.



- ① Touch and hold to record audio.
- ② Touch and hold to switch language (if additional language keyboards are activated).
- ③ Attach a picture from the gallery or shoot one directly.
- ④ Insert a GIF, location, contact or other media file.
- ⑤ Tap to input a comma. Touch and hold to access keyboard settings or enter left or right hand input mode.
- ⑥ Tap to access the symbols and numbers keyboards.

Gmail

Use Gmail to create, send, and receive emails directly on your phone. The Gmail app will allow you to add several email accounts.



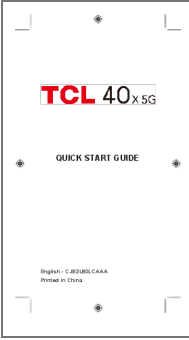
- ① Tap to view the email accounts on your device.
- ② Tap to access email folders, settings, and more.
- ③ Tap to create an email

CUSTOMER SUPPORT

United States & Canada
 Phone: 1-855-224-4228
 Web: <https://support.tcl.com>

TCL

Documents / Resources

	<p>TCL T609M Smartphone [pdf] User Guide T609M, T609M Smartphone, Smartphone</p>
--	--

References

-  [TCL USA | TVs, Sound Bars, Phones, Appliances](#)
-  [TCL Support](#)

[Manuals+](#).