



[Home](#) » [TCL](#) » **TCL RC923C TV Remote Control User Guide** 

Contents [[hide](#)]

- [1 TCL RC923C TV Remote Control](#)
- [2 Product Usage Instructions](#)
- [3 Product specification](#)
- [4 FAQs](#)
- [5 Documents / Resources](#)
 - [5.1 References](#)



TCL RC923C TV Remote Control



Product Usage Instructions

Step 1: Unboxing

Open the product packaging carefully and remove all contents.

Step 2: Setup

Place the product on a stable surface and ensure proper ventilation around the device.

Step 3: Power On

Connect the power source as per the instruction manual and switch on the device.

Step 4: Operation

Follow the user manual to operate the device effectively and safely.

Step 5: Maintenance

Regularly clean the device as per the maintenance guidelines provided in the manual.

Product specification

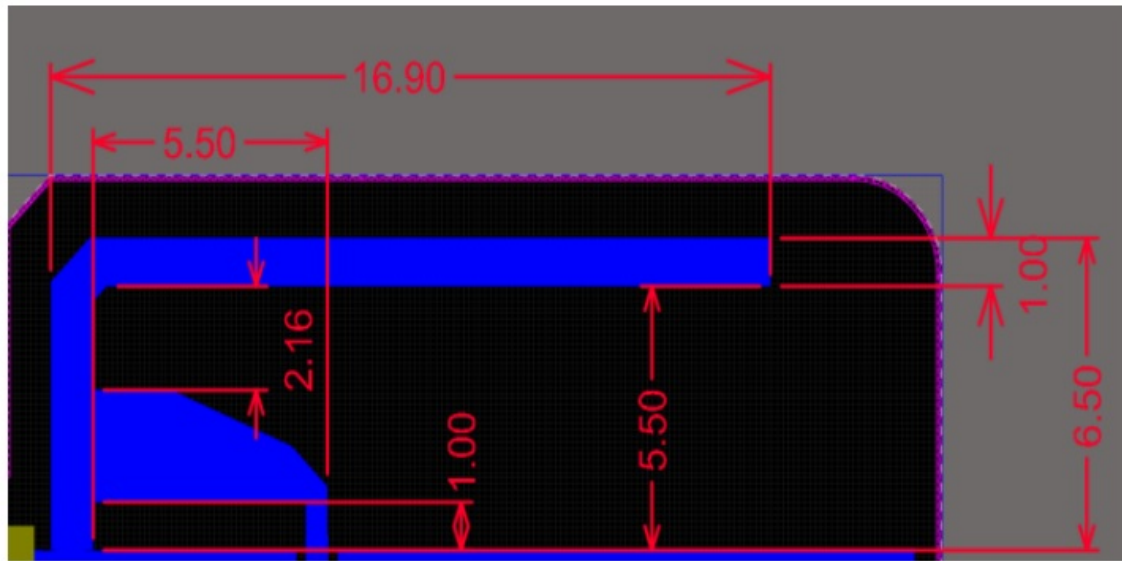
This product is TCL TV remote control (IR+BT), the device under test is powered by 2*AAA battery. And directly use the TV connection Bluetooth operation. The 3V battery powers the Bluetooth Chip RTL8762EJF and the Bluetooth chips are only different labels, and the rest exactly the same. This module uses a PCB antenna with a crystal frequency of 40MHz.

- Product Name: Remote Controller
- Model name: RC923A
- Crystal frequency value: 40MHz
- Number of keys: 26
- Battery :2 x AAA

BT Features:

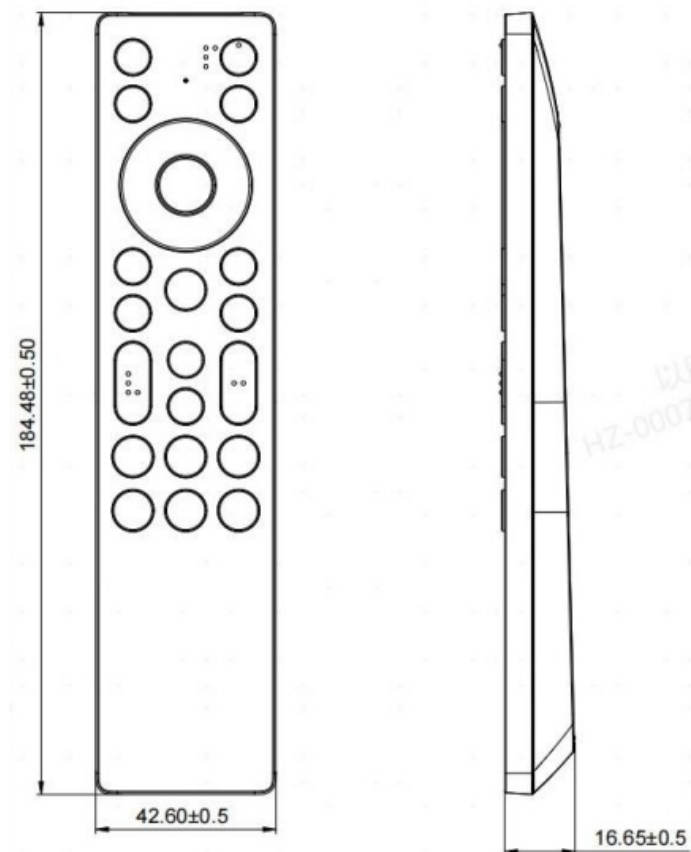
- Operating frequency range: 2402-2480MHz
- Number of channels: 40CH
- Modulation type: GFSK
- Supported transmission rate: LE 1M/2M
- Antenna type: PCB antenna

- Antenna size



Unit: mm

Product dimension drawing



Common items

- work environment 0°C to 45°C , 20 to 85%RH, 86 to 106Kpa
- storage temperature -10°C to 60°C

NOTICE

FCC Notice

The device complies with the FCC rules, Part 15. Operation is subject to the following two conditions:

1. This device may not cause harmful interference, and
2. This device must accept any interference received, including interference that may cause undesired operation. Changes or modifications not expressly approved by the party responsible for compliance could void the user's authority to operate the equipment.

This equipment has been tested and found to comply with the limits for a Class B digital device, pursuant to part 15 of the FCC Rules. These limits are designed to provide reasonable protection against harmful interference in a residential installation. This equipment generates, uses and can radiate radio frequency energy and, if not installed and used in accordance with the instruction manual, may cause harmful interference to radio communications.

However, there is no guarantee that interference will not occur in a particular installation. If this equipment does cause harmful interference to radio or television reception, which can be determined by turning the equipment on and on, the user is encouraged to try to correct the interference by one or more of the following measures:

1. Reorient or relocate the receiving antenna.
2. Increase the separation between equipment and receiver.
3. Connect the equipment into an outlet on a circuit different from that to which the receiver is connected.
4. Consult the dealer or an experienced radio/TV technician for help.

FCC Radiation Exposure Statement:

- The equipment complies with FCC radiation exposure limits set forth for an uncontrolled environment.
- The equipment can be used in portable exposure condition without restriction.

ISED Notice

This device contains licence-exempt transmitter(s)/receiver(s) that comply with Innovation, Science and Economic Development Canada’s licence-exempt RSS(s). Operation is subject to the following two conditions:

- 1. This device may not cause interference.
- 2. This device must accept any interference, including interference that may cause undesired operation of the device.

IC Radiation Exposure Statement:


This equipment complies with ISED radiation exposure limits set forth for an uncontrolled environment. The equipment can be used in portable exposure condition without restriction.

FAQs

Q: Can the device be used in all environments?

A: The device can be used in portable exposure conditions without restrictions as long as regulatory compliance guidelines are followed.

Documents / Resources

| | |
|---|--|
|  | <p>TCL RC923C TV Remote Control [pdf] User Guide</p> <p>RC923C, W8U-RC923C, W8URC923C, RC923C TV Remote Control, RC 923C, TV Remote Control, Remote Control, Control</p> |
|---|--|

References

- [User Manual](#)

Your email address will not be published. Required fields are marked *

Comment *

Name

Email

Website

☐ Save my name, email, and website in this browser for the next time I comment.

Post Comment

Search:

e.g. whirlpool wrf535swhz

Search

[Manuals+](#) | [Upload](#) | [Deep Search](#) | [Privacy Policy](#) | [@manuals.plus](#) | [YouTube](#)

This website is an independent publication and is neither affiliated with nor endorsed by any of the trademark owners. The "Bluetooth®" word mark and logos are registered trademarks owned by Bluetooth SIG, Inc. The "Wi-Fi®" word mark and logos are registered trademarks owned by the Wi-Fi Alliance. Any use of these marks on this website does not imply any affiliation with or endorsement.