



## Contents [ [hide](#) ]

- [1 TCL RC813A TV Remote Control](#)
- [2 Product Usage Instructions](#)
- [3 Product specification](#)
- [4 Product dimension drawing](#)
- [5 Common items](#)
- [6 FCC Radiation Exposure Statement](#)
- [7 IC Radiation Exposure Statement:](#)
- [8 Frequently Asked Questions](#)
- [9 Documents / Resources](#)
  - [9.1 References](#)

# TCL

## TCL RC813A TV Remote Control



## Product Usage Instructions

- **Unboxing and Setup**

Remove the product from its packaging carefully. Ensure all components are included as per the manual. Place the device on a stable surface.

- **Powering On**

Locate the power button and switch it on. Wait for the device to boot up completely before proceeding.

- **Connectivity**

Follow the instructions to establish a connection with other devices if required. Ensure proper pairing and settings are configured.

- **Operation**

Use the device according to its intended purpose. Refer to the user manual for specific functions and features.

- **Maintenance**

Keep the device clean and free from dust. Avoid exposure to extreme temperatures or moisture. Regularly check for updates or firmware upgrades.

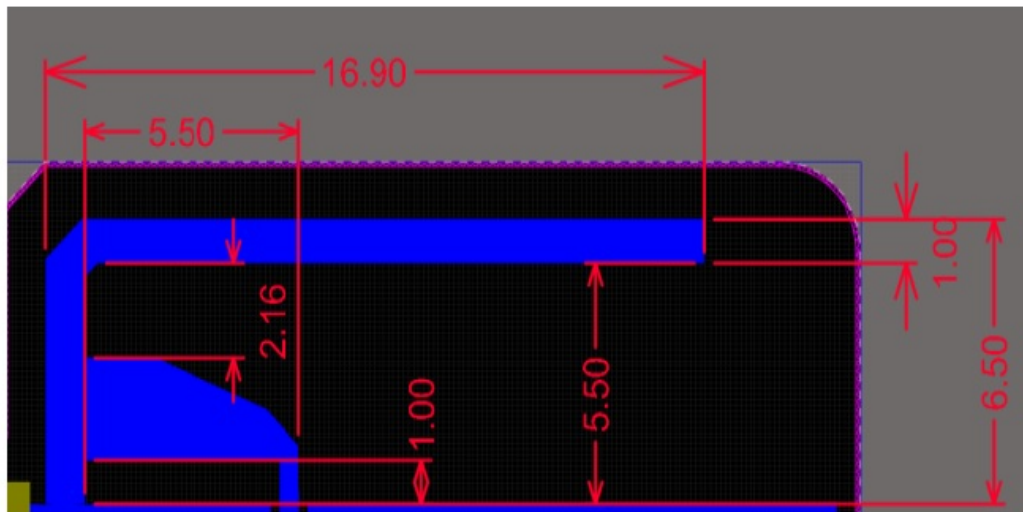
## **Product specification**

This product is TCL TV remote control (IR+BT), the device under test is powered by 2\*AAA battery. And directly use the TV connection Bluetooth operation. The 3V battery powers the Bluetooth Chip XF2672A and the Bluetooth chips are only different labels, and the rest exactly the same. This module uses a PCB antenna with a crystal frequency of 40MHz.

## **Specifications**

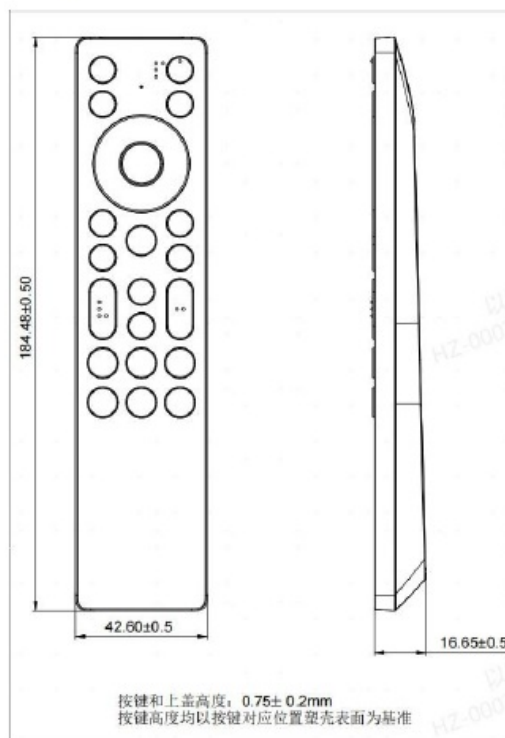
- Product Name: Remote Controller
- Model name: RC813A
- Crystal frequency value: 40MHz
- Number of keys: 26
- Battery :2 x AAA
- BT Features:
- Operating frequency range: 2402-2480MHz
- Number of channels: 40CH
- Modulation type: GFSK

- Supported transmission rate: LE 1M/2M
- Antenna type: PCB antenna
- Antenna size



Unit: mm

## Product dimension drawing



## Common items

- work environment 0°C to 45°C, 20 to 85%RH, 86 to 106Kpa
- storage temperature -10°C to 60°C

## **NOTICE**

### **FCC Notice**

The device complies with the FCC rules, Part 15. Operation is subject to the following two conditions:

1. This device may not cause harmful interference, and
2. This device must accept any interference received, including interference that may cause undesired operation. Changes or modifications not expressly approved by the party responsible for compliance could void the user's authority to operate the equipment.

This equipment has been tested and found to comply with the limits for a Class B digital device, pursuant to part 15 of the FCC Rules. These limits are designed to provide reasonable protection against harmful interference in a residential installation. This equipment generates, uses and can radiate radio frequency energy and, if not installed and used in accordance with the instruction manual, may cause harmful interference to radio communications.

However, there is no guarantee that interference will not occur in a particular installation. If this equipment does cause harmful interference to radio or television reception, which can be determined by turning the equipment off and on, the user is encouraged to try to correct the interference by one or more of the following measures:

- Reorient or relocate the receiving antenna.
- Increase the separation between the equipment and the receiver.
- Connect the equipment into an outlet on a circuit different from that to which the receiver is connected.
- Consult the dealer or an experienced radio/TV technician for help.

### **FCC Radiation Exposure Statement**

The equipment complies with FCC radiation exposure limits set forth for an uncontrolled environment.

The equipment can be used in portable exposure condition without restriction.

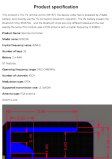
## IC Radiation Exposure Statement:

This equipment complies with ISED radiation exposure limits set forth for an uncontrolled environment. The equipment can be used in portable exposure condition without restriction.

## Frequently Asked Questions

- **Q: Can the device be used outdoors?**  
A: Yes, the device can be used in portable exposure conditions without restrictions.
- **Q: How do I reset the device to factory settings?**  
A: To reset the device, locate the reset button or refer to the manual for specific instructions on restoring factory settings.

## Documents / Resources

	<a href="#">TCL RC813A TV Remote Control [pdf]</a> Owner's Manual RC813C, W8U-RC813C, W8URC813C, RC813A TV Remote Control, RC 813A, TV Remote Control, Remote Control, Control, Remote
---	---

## References

- [User Manual](#)

📁 TCL  
🔍 control, RC813A, RC813A TV Remote Control, RC813C, remote, Remote Control, TCL, TV Remote Control, W8U-RC813C, W8URC813C

---

## Leave a comment

Your email address will not be published. Required fields are marked \*

Comment \*

Name

Email

Website

☐ Save my name, email, and website in this browser for the next time I comment.

Post Comment

Search:

e.g. whirlpool wrf535swhz

Search

[Manuals+](#) | [Upload](#) | [Deep Search](#) | [Privacy Policy](#) | [@manuals.plus](#) | [YouTube](#)

This website is an independent publication and is neither affiliated with nor endorsed by any of the trademark owners. The "Bluetooth®" word mark and logos are registered trademarks owned by Bluetooth SIG, Inc. The "Wi-Fi®" word mark and logos are registered trademarks owned by the Wi-Fi Alliance. Any use of these marks on this website does not imply any affiliation with or endorsement.