



TCL Breeva A1-A1W Replacement Filter User Guide

[Home](#) » [TCL](#) » TCL Breeva A1-A1W Replacement Filter User Guide 

Contents

- [1 TCL Breeva A1-A1W Replacement Filter](#)
- [2 Introduction – Breeva 3-Stage Filter](#)
- [3 INSTALLATION](#)
- [4 Customer Support](#)
- [5 Important Safety Information](#)
- [6 Documents / Resources](#)
 - [6.1 References](#)
- [7 Related Posts](#)

TCL

TCL Breeva A1-A1W Replacement Filter



Introduction – Breeva 3-Stage Filter

Pre-Filter

Filters large airborne particles such as dust, pet hair, etc.

True HEPA (H13) Filter

H13 High-Efficiency HEPA Filter helps remove bacteria, pollen, allergens, PM2.5, and other fine particles.

Activated Carbon Filter

Effectively absorbs and removes formaldehyde, toluene, volatile organic compounds (VOCs), other gaseous pollutants like smoke, and odors.

Air Filter Indicator

The air filter indicator is located on the air purifier device you originally purchased.

- **White:** Status Good – up to 2160 hours of filtration remaining
- **Yellow:** Status Moderate – up to 1920 hours of filtration remaining
- **Red:** Status Poor – the filter should be replaced. If flickering, the filter should be changed as soon as possible.

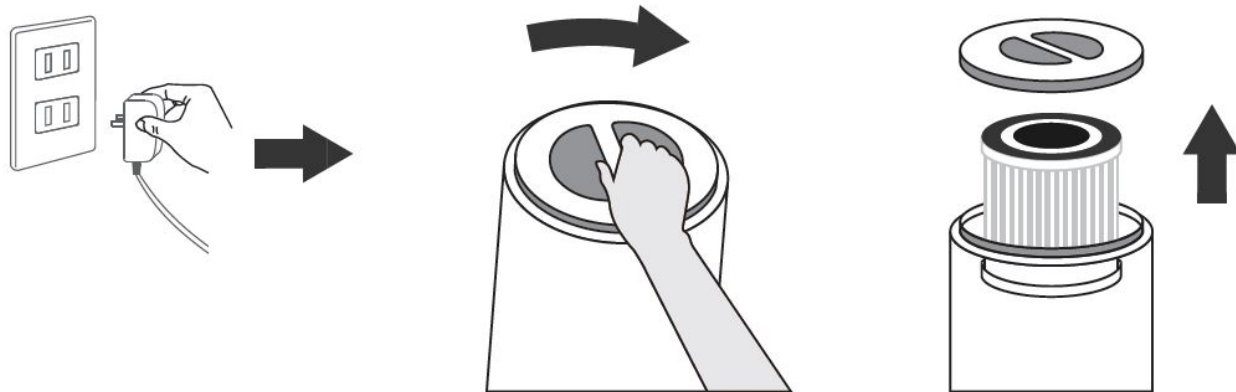
Filter Duration

The 3-stage filter will last from 3-6 months depending on environmental factors.

INSTALLATION

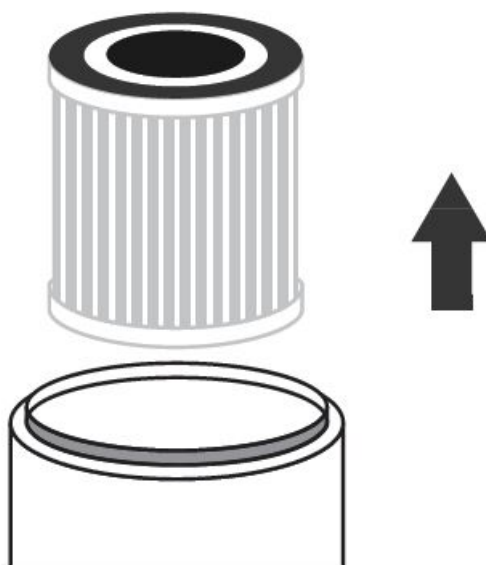
Quick & Easy Setup

- **Step 1:**
Unplug the air purifier, turn it over, and remove the filter cover.



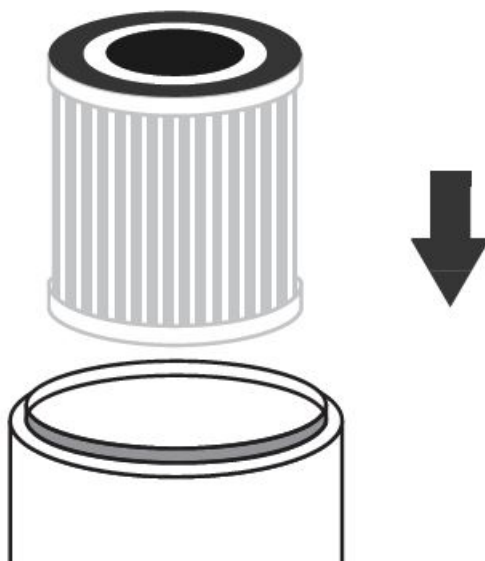
- **Step 2:**

Remove the old air filter and clean out any dust or debris remaining inside your air purifier (vacuum hose only, no water or liquids permitted).



- **Step 3:**

Unwrap the new filter from the plastic bag and insert into the air purifier, then use the filter cover to close the device.



- **Step 4:**

Press and hold the filter indicator button for at least 3 seconds until the indicator light resets and turns off.



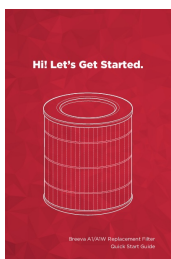
Customer Support

Should you have any questions regarding your new filter, please contact our support group at 877-300-9806. TCL North America 1860 Compton Ave Corona, CA 92881 1-877-300-9806 www.tcl.com

Important Safety Information

1. Follow all safety guidelines. Read all instructions before using.
2. Make sure the air purifier is removed from power before changing the filter to avoid damage to the product and avoid any minor or serious injury to the person changing the filter.
3. Do not clean the filter with water or other liquids.
4. Completely remove packaging from the filter prior to use.
5. If your filter is damaged, do not use it and contact Customer Support.
6. After use, follow state/local disposal laws when discarding the filter.
7. Do not allow children to operate this device, or handle or replace the filter, without adult supervision

Documents / Resources



[TCL Breeva A1-A1W Replacement Filter](#) [pdf] User Guide
Breeva A1-A1W Replacement Filter

References

-  [TCL USA | Enjoy More](#)

Manuals+.