

Taymor
04-33448R Slip
Stream Towel Bar



Taymor 04-33448R Slip Stream Towel Bar Owner's Manual

[Home](#) » [taymor](#) » Taymor 04-33448R Slip Stream Towel Bar Owner's Manual 

Contents

- [1 Taymor 04-33448R Slip Stream Towel Bar](#)
- [2 Product Usage Instructions](#)
- [3 FAQ](#)
- [4 MODELS](#)
- [5 FEATURES](#)
- [6 INSTALLATION](#)
- [7 STOCKED FINISHES](#)
- [8 HOW TO SPECIFY SPECIAL ORDER FINISHES](#)
- [9 Dimension](#)
- [10 WARRANTY](#)
- [11 Documents / Resources](#)
 - [11.1 References](#)

Taymor®

Taymor 04-33448R Slip Stream Towel Bar



Product Specifications

- **Material:** Zinc/Stainless Steel
- **Stocked Finishes:** Polished Chrome (PC), Matte Black (BLK)
- **Special Order Finishes:** Brushed Brass (BB), Dark Bronze (DB), Gun Metal (GM), Brushed Nickel (BN), Polished Nickel (PN)

Product Usage Instructions

Installation

1. Ensure you have the provided mounting hardware kit which includes plates, nylon anchors, and steel Phillips head screws.
2. Mounting plates dimensions: 1-1/4 x 1 x 1/4 inches (31 mm x 25.5 mm x 6 mm).
3. Choose the appropriate location for installation and use the hardware kit to securely mount the product.

How to Specify Special Order Finishes

- Contact your Taymor Sales Representative for pricing, samples, and minimum order quantities.
- To determine the item code for a special order finished product, add the finished code at the end of the product SKU.

FAQ

Q: How do I obtain warranty information for the product?

A: For product warranty details, please visit [taymor.com](https://www.taymor.com) or contact Customer Service at West 1- [800-267-4774](tel:800-267-4774) or East 1- [800-387-7064](tel:800-387-7064).

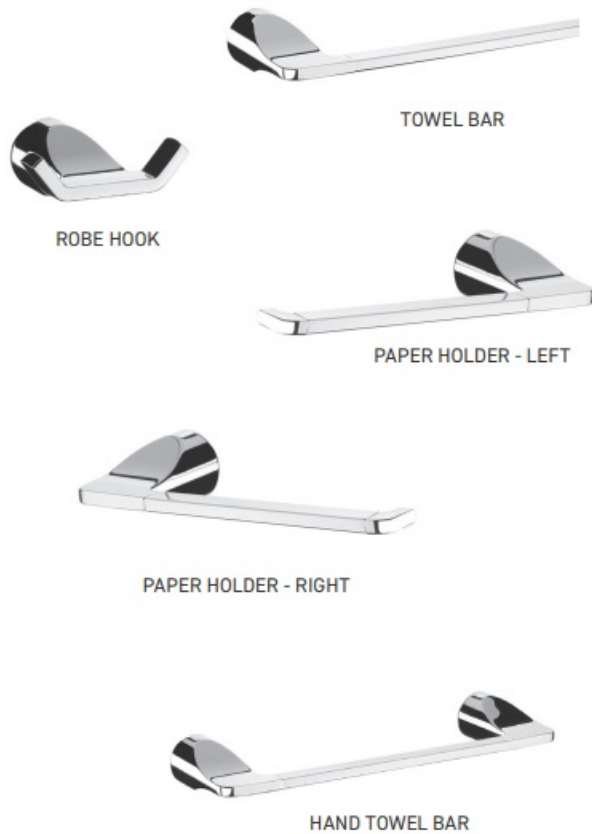
Q: Can I order custom finishes for the product?

A: Yes, you can order custom finishes by contacting your Taymor Sales Representative for more information.

Q: Are the measurements provided accurate?

A: The measurements are subject to a 3% variance and are for reference only. Taymor reserves the right to change product specs without notice.

MODELS





FEATURES

- One-piece design
- Concealed screw mount

INSTALLATION

- **Mounting hardware kit** (plates, nylon anchors, and steel Phillips head screws) included
- **Mounting plates:** 1-1/4" x 1" x 1/4" (31 mm x 25.5 mm x 6 mm)

STOCKED FINISHES

-  Polished Chrome (PC)
-  Matte Black (BLK)

SPECIAL ORDER FINISHES

-  Brushed Brass (BB)
-  Dark Bronze (DB)
-  Gun Metal (GM)
-  Brushed Nickel (BN)
-  Polished Nickel (PN)

BOX PACK	POLISHED CHROME	MATTE BLACK	MATERIAL
16" Towel Bar	04-33416	04-33416BLK	Zinc/Stainless Steel Zinc/Stainless Steel
24" Towel Bar	04-33424	04-33424BLK	
Hand Towel Bar	04-33409	04-33409BLK	Zinc/Stainless Steel
Double Robe Hook	04-33402	04-33402BLK	Zinc
Paper Holder – Left	04-33448L	04-33448LBLK	Zinc/Stainless Steel
Paper Holder – Right	04-33448R	04-33448RBLK	Zinc/Stainless Steel

HOW TO SPECIFY SPECIAL ORDER FINISHES

- Please contact your Taymor Sales Representative for pricing, samples, and minimum order quantities.
- To determine the item code for a special order finish product, simply add the finish code at the end of the product SKU as shown below.

FINISH	FINISH CODE			
Brushed Brass	BB	<div>04</div> <div>LINE CODE</div>	-	<div>2818</div> <div>SKU</div>
Dark Bronze	DB			
Gun Metal	GM			
Matte Black	BLK			
Brushed Nickel	BN			
Polished Nickel	PN			
		<div>BB</div> <div>FINISH CODE</div>		
		<div>04-2818BB</div>		

Example of the item codes for the Astral Bath Collection's Towel Bars in Brushed Brass:

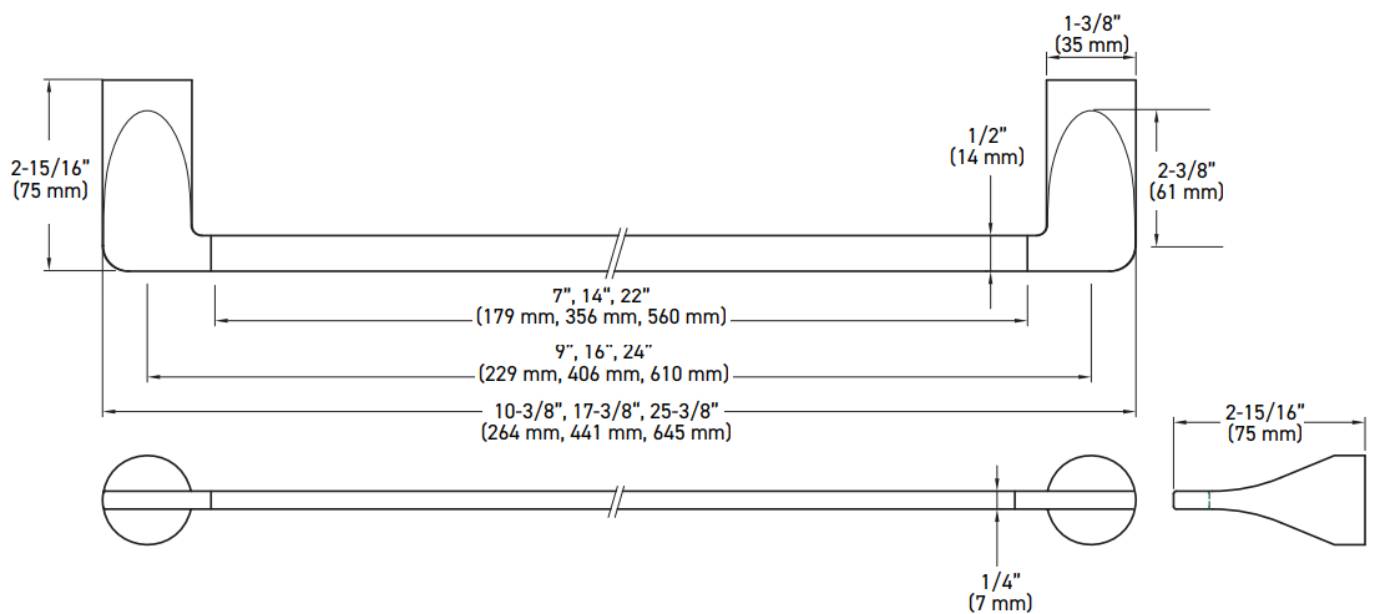
FUNCTIONS	LINE CODE	SKU	FINISH CODE	ITEM CODE
10" Towel Bar	04	2810	BB BB BB BB	04-2810BB
18" Towel Bar	04	2818		04-2818BB
24" Towel Bar	04	2824		04-2824BB
30" Towel Bar	04	2830		04-2830BB

ADDITIONAL DETAILS

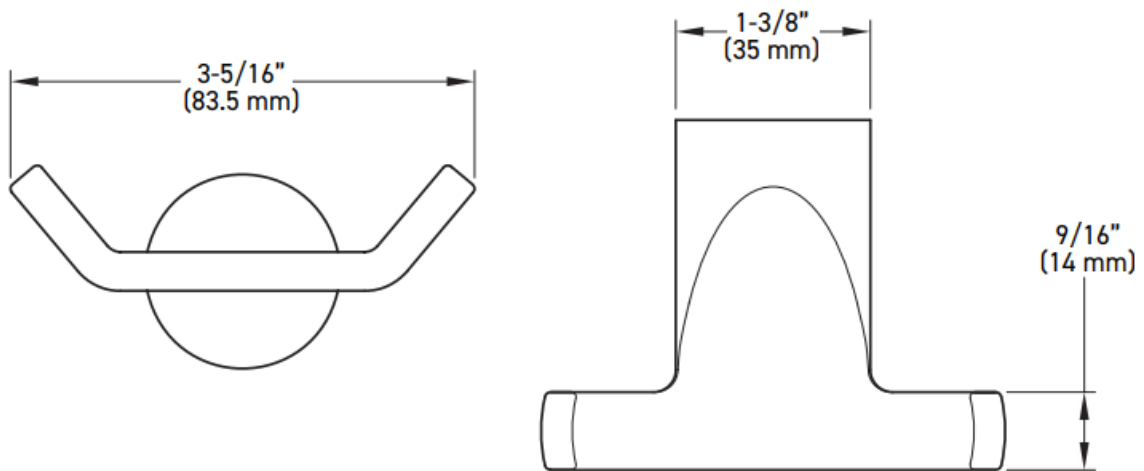
- Special order products are not eligible for return or exchange
- Lead times may vary
- Minimum order quantities apply

Dimension

TOWEL BAR

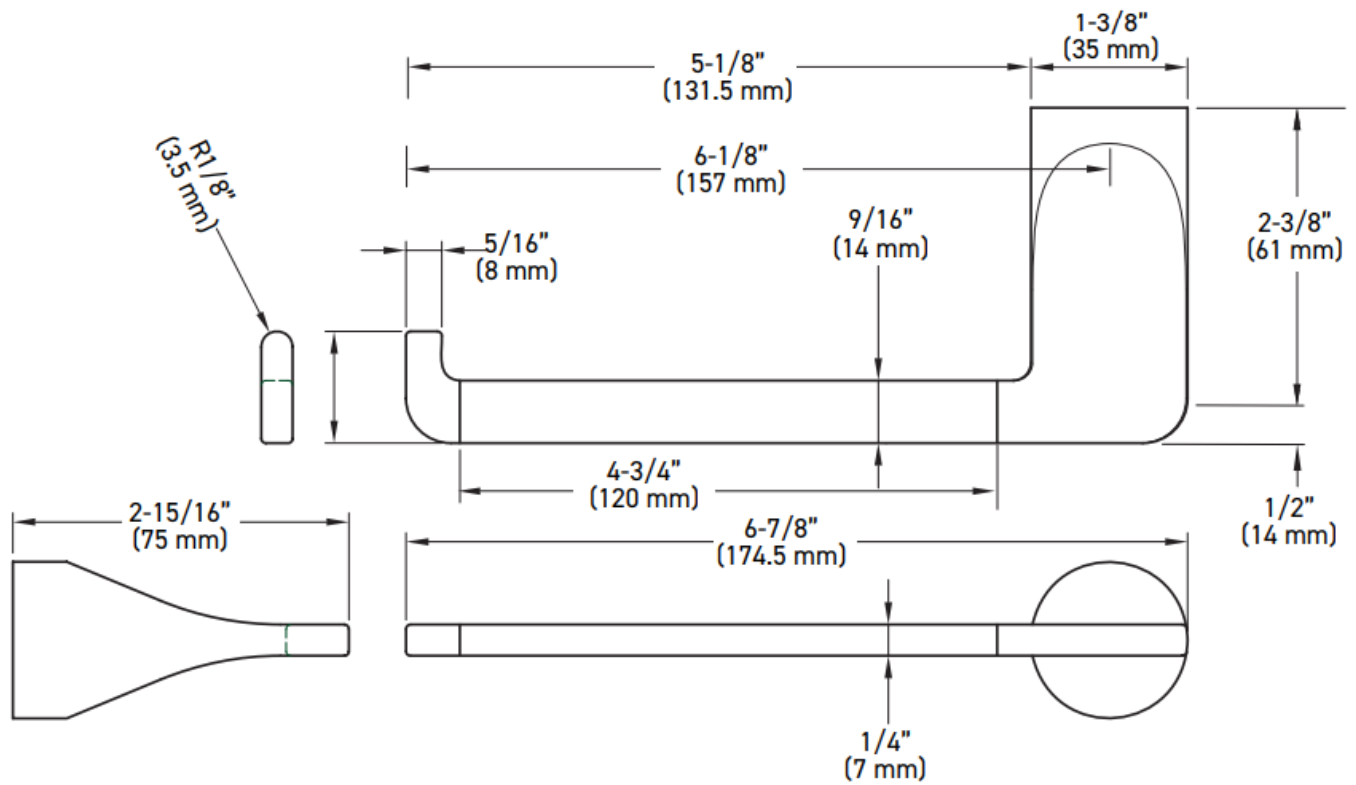


ROBE HOOK

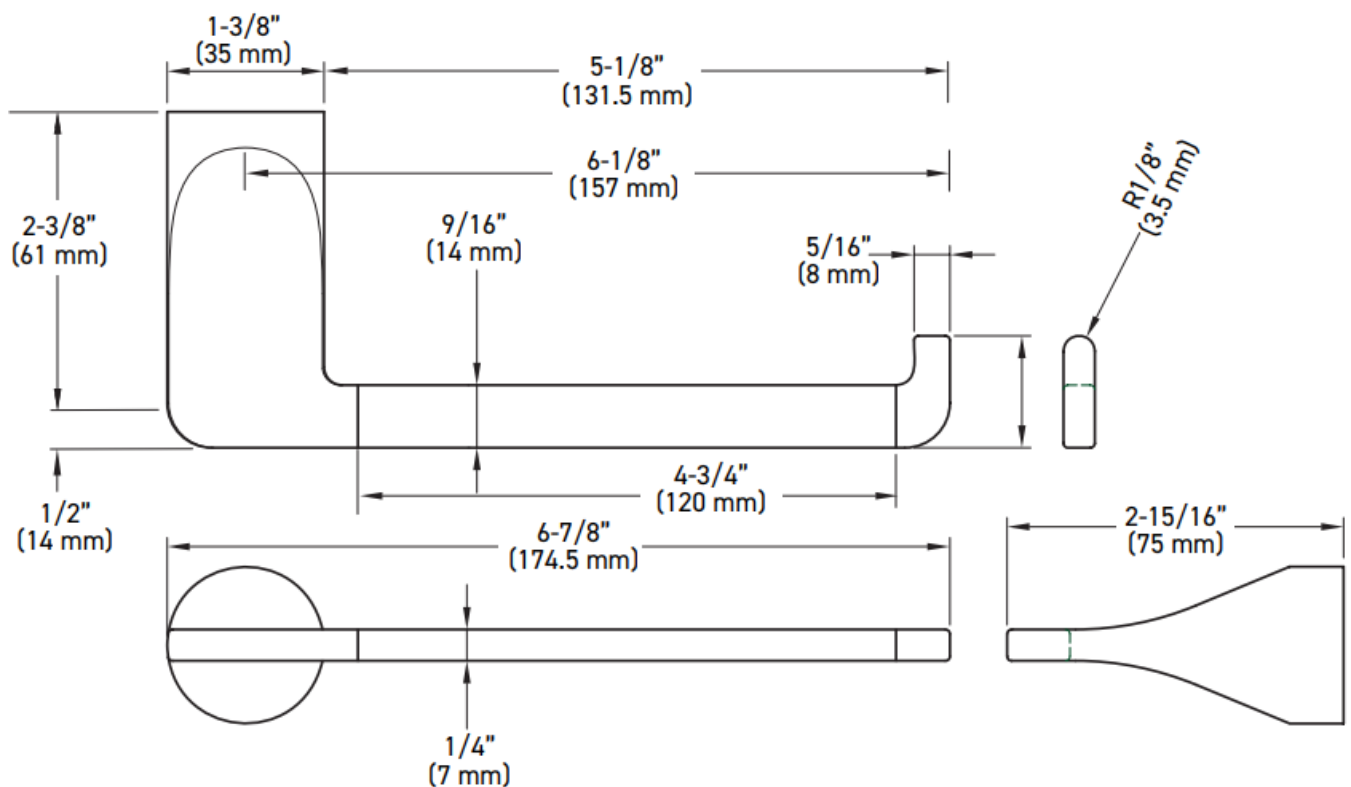


MEASUREMENTS SUBJECT TO A 3% VARIANCE. MEASUREMENTS ARE FOR REFERENCE ONLY. TAYMOR RESERVES THE RIGHT TO CHANGE PRODUCT SPECS WITHOUT NOTICE.

PAPER HOLDER (LEFT-HAND INSTALLATION)



PAPER HOLDER (RIGHT HAND INSTALLATION)

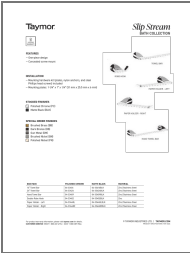


- MEASUREMENTS SUBJECT TO A 3% VARIANCE.
- MEASUREMENTS ARE FOR REFERENCE ONLY. TAYMOR RESERVES THE RIGHT TO CHANGE PRODUCT SPECS WITHOUT NOTICE.
- For product warranty information, please visit taymor.com for details.
- CUSTOMER SERVICE WEST 1-[800-267-4774](tel:8002674774) EAST 1-[800-387-7064](tel:8003877064)
- © TAYMOR INDUSTRIES LTD. TAYMOR.COM

WARRANTY

LIFETIME WARRANTY

Documents / Resources



[Taymor 04-33448R Slip Stream Towel Bar](#) [pdf] Owner's Manual
04-33416, 04-33424, 04-33409, 04-33402, 04-33448L, 04-33448R, 04-33448R Slip Stream To
wel Bar, 04-33448R, Slip Stream Towel Bar, Stream Towel Bar, Towel Bar

References

-  [Taymor](#)
- [User Manual](#)

[Manuals+.](#) [Privacy Policy](#)

This website is an independent publication and is neither affiliated with nor endorsed by any of the trademark owners. The "Bluetooth®" word mark and logos are registered trademarks owned by Bluetooth SIG, Inc. The "Wi-Fi®" word mark and logos are registered trademarks owned by the Wi-Fi Alliance. Any use of these marks on this website does not imply any affiliation with or endorsement.