



## TATZE Manual Refresh Kit Instructions

[Home](#) » [TATZE](#) » TATZE Manual Refresh Kit Instructions 



### Manual Refresh Kit Instructions

#### Contents

- [1 Manual Refresh Kit](#)
- [2 Dismount Axle](#)
- [3 Press in bearings & assembly](#)
- [4 Documents / Resources](#)
  - [4.1 References](#)

### Manual Refresh Kit

Manual Refresh Kit suitable for  
LINK Composite, LINK, LINK TI, TWO-FACE Composite, CONTACT CNC

#### Refresh Kit consisting of:

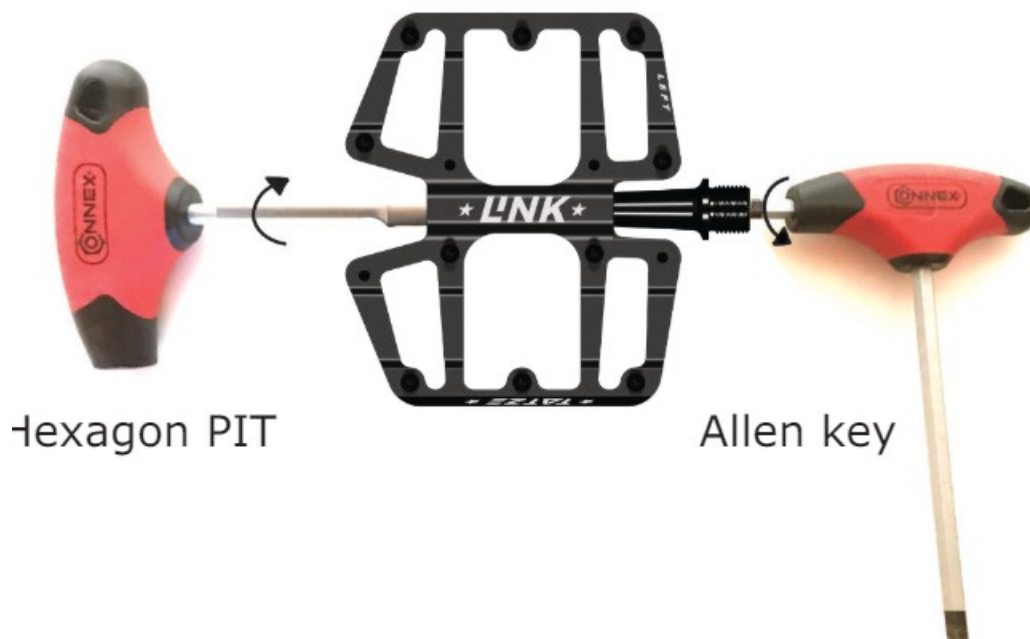
- Ball bearing (4x)
- Plain bearing (2x)
- Weals (4x)
- Grease (1x)
- Hexagonal PIT (1x)
- Tool with washers (1x)

### Dismount Axle

1.1. Unscrew the end cap with an Allen key. Hold the pedal while doing so.



1.2. Unscrew the axle in the opposite direction using the hexagon and Allen key included.



**ATTENTION!**

Left pedal => RIGHT THREAD!

Right pedal => LEFT SPEED!

1.3. Bearing and axle set in disassembled status



2.1. Carefully tap out the ball bearing and then clean the socket properly.



## Press in bearings & assembly

2.1. Slide the plain bearing over the tool with the bevel first and press it in straight by hand with the washer.



2.2. Place the convex washer on the tool and push in the ball bearing (A). Press in by hand and screw in completely with end cap (B). Then remove the end cap again.

2.3. Slide the seals onto the axle, put some grease into the plain bearing bushing and onto the seals and slowly slide the axle into the pedal body.



2.4. Insert nut and apply washer with a little grease. Then tighten with hexagon and Allen key in opposite direction with approx. 10 Nm.



2.5 Screw in the end cap with an Allen key and approx. 10 Nm on aluminum pedals and 2.5 Nm on composite pedals. Hold the pedal while doing so.



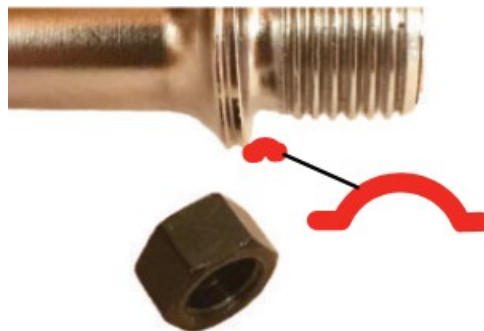
#### FINAL CHECK!

Axles must rotate well and be firmly connected to the pedal body.

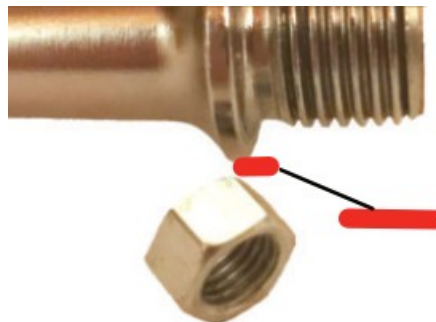
#### DONE!

The 1×1 of pedal sides

Left axle with notch & Black nut.



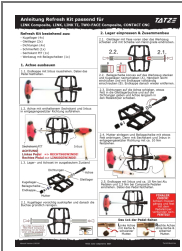
Right axle without notch & silver nut.



# TATZE

Manual Version 230330  
TATZE bike-components GmbH  
Tyrol/Austria

## Documents / Resources



**TATZE Manual Refresh Kit** [pdf] Instructions  
Manual Refresh Kit, Manual Refresh, Refresh Kit, Refresh

## References

- [User Manual](#)

[Manuals+](#), [Privacy Policy](#)

This website is an independent publication and is neither affiliated with nor endorsed by any of the trademark owners. The "Bluetooth®" word mark and logos are registered trademarks owned by Bluetooth SIG, Inc. The "Wi-Fi®" word mark and logos are registered trademarks owned by the Wi-Fi Alliance. Any use of these marks on this website does not imply any affiliation with or endorsement.