



Tatybo ANC-WT01 Wireless Bluetooth Headset User Guide

[Home](#) » [TATYBO](#) » Tatybo ANC-WT01 Wireless Bluetooth Headset User Guide 

Tatybo ANC-WT01 Wireless Bluetooth Headset User Guide



(Automatic Pairing)

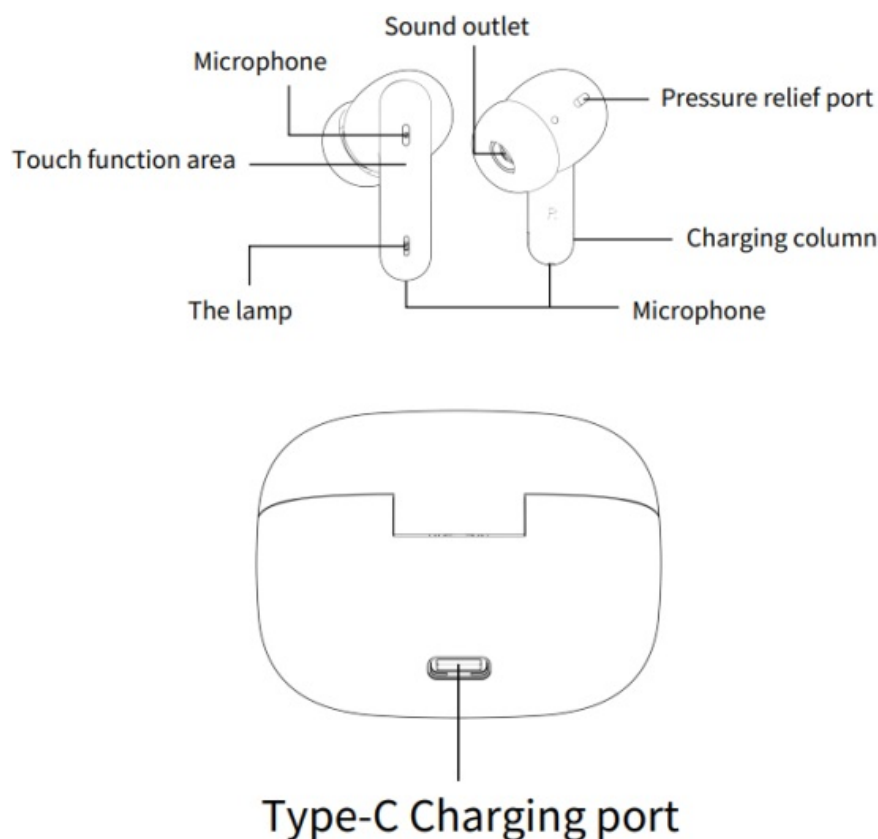
Folded size: 60*60mm (front and back printing)

Expanded size: 360*360 (front and back printing)

Contents

- 1 [Functional operation diagram](#)
- 2 [Headset function operation instructions](#)
- 3 [Headset connection pairing operation](#)
- 4 [Charging case status indicator](#)
- 5 [Product parameter](#)
- 6 [Product safety information](#)
- 7 [Documents / Resources](#)
 - 7.1 [References](#)
- 8 [Related Posts](#)

Functional operation diagram



Headset function operation instructions

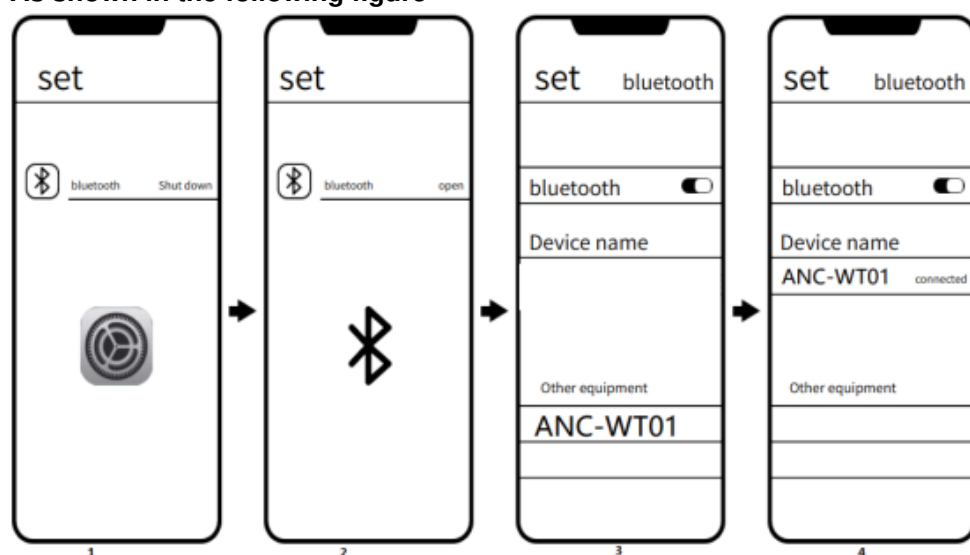
1. **Power on:** Open the cover of the charging case for 2~3 seconds and the earphone will automatically power on and then pair
2. **Power off:** Put the L/R earphone into the charging box, close the cover of the charging box, and automatically shut down and disconnect
3. **Answer/Hang up:** L/R incoming call Click the function key
4. **Reject incoming calls:** L/R Long press the multi-function key for 2S
5. **Pause/play:** L/R Click the function key to play/pause
6. **Previous:** L/ Double-click the function key on the previous track
7. **Next:** R/ Double-click the function key to the next song
8. **Volume plus:** R three-click function key volume plus
9. **Volume reduction:** L three-stroke function key volume reduction

10. **Voice assistant:** L Four strokes to enter the voice assistant
11. **Game/Music mode:** R four click function key switch
12. **Noise reduction mode:** Power on: long press the left/right headset multi-function key for 3 seconds, the first time is transparent cycle
Power on: Long press the left/right headset multi-function key for 3 seconds, the second time is the noise reduction cycle.
Power on: Long press the left/right headset multi-function key for 3 seconds, the third time is to close the loop.
13. **Connect mobile phone:** Bluetooth details page search for Bluetooth name Connect ANC-WT01
14. **Disconnect:** The earphone can be automatically disconnected by placing it in the charging case
15. **Display power:** headset power less than 10% prompt (beep sound)

Headset connection pairing operation

The earphone charging case opens and automatically turns on, the earphone traffic light flashes alternately, and the device search begins.

As shown in the following figure




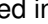
1. Enter Settings
2. Select Bluetooth option
3. Make sure the Bluetooth switch is On and search for the device name: **ANC-WT01**
Tap the Bluetooth name to enter the connection
4. Bluetooth connection successful

Charging case status indicator

1. The white indicator of the charging box blinks at short intervals, indicating that the battery of the charging box is low and needs charging.
2. When charging the charging box, the white light blinks. Each light represents 25% of the power, for example, 0 ~ 25%
The first light blinks, the first light is steady on over 25%, and the second light blinks.
3. When the charging box is charging the earphone, the earphone is red and the white light of the charging box is steady on.

4. When the headset is in low battery state (beep), the headset is in low battery state.

Product parameter

Frequency response range	20Hz-20KHz	
impedance	32Ω±10%	
sensitivity	105±3db	
Bluetooth receiving distance	≥10 m (standard environment)	
Bluetooth version	BLUETOOTH V5.4	
Support protocol	HSP/HFP/ADP/SBC/ ACC/ AVROP	
Transmission frequency	2402MHz-2480MHz	
Earphone charging time	25 minutes (headphones) about 1.5 hours (charging case)	
Play time	5 hours (60% volume)	
Talk time	4 hours (60% volume)	
Endurance time	Call duration when Bluetooth headset and mobile phone are connected; About 3-4 hours (binaural call); Call duration in connected state; Standby time: about 100 hours.	
Charging voltage/current	Headset rated input : 5V  40mA x 3	Charging box rated input: 5V  300mA
Product operating temperature	-10-50°C	
Product storage temperature	-20-65°C	

Product safety information

Please read all instructions and warnings before using this product. Improper use will damage the product or personal safety.

1. The product contains batteries, do not expose the product to strong sunshine or overheating environment such as heaters.
Do not store this product in high temperature, strong light and strong magnetic field environment.
2. Do not place the product in harsh environment such as near the fire source, do not knock, throw, trample, squeeze or put into the fire, if bulging, do not use.
3. **Ambient temperature** :0~45°C.
4. Do not violate the product instructions and use improperly, causing product damage or endangering personal and property safety, and bear the consequences.
5. Non-professional personnel are strictly prohibited from decomposing this product, otherwise it may lead to fire and even complete damage to this product.
6. Do not use the load that exceeds the output current of this product (electrical appliances), which will automatically stop working.
7. Please regularly clean the charging contact of the earphone with a clean cotton cloth to avoid the situation that

the earphone cannot be charged or started due to long-term uncleaning.

8. Do not place the product in water (or washing machine). If the product is in water, please wait for it to dry naturally before use

FCC Warning Statement: Changes or modifications to this unit not expressly approved by the party responsible for compliance could void the user's authority to operate the equipment. This equipment has been tested and found to comply with the limits for a Class B digital device, pursuant to Part 15 of the FCC Rules. These limits are designed to provide reasonable protection against harmful interference in a residential installation. This equipment generates, uses and can radiate radio frequency energy and, if not installed and used in accordance with the instructions, may cause harmful interference to radiocommunications.

However, there is no guarantee that interference will not occur in a particular installation. If this equipment does cause harmful interference to radio or television reception, which can be determined by turning the equipment off and on, the user is encouraged to try to correct the interference by one or more of the following measures:

- Reorient or relocate the receiving antenna.
- Increase the separation between the equipment and receiver.
- Connect the equipment into an outlet on a circuit different from that to which the receiver is connected.
- Consult the dealer or an experienced radio/TV technician for help

This device complies with Part 15 of the FCC Rules. Operation is subject to the following two conditions: (1) this device may not cause harmful interference, and (2) this device must accept any interference received, including interference that may cause undesired operation.

FCC Radiation Exposure Statement

The device has been evaluated to meet general RF exposure requirement. The device can be used in portable exposure condition without restriction.



Documents / Resources

	Tatybo ANC-WT01 Wireless Bluetooth Headset [pdf] User Guide ANC-WT01 Wireless Bluetooth Headset, ANC-WT01, Wireless Bluetooth Headset, Bluetooth Headset, Headset
--	--

References

- [User Manual](#)

[Manuals+](#), [Privacy Policy](#)

This website is an independent publication and is neither affiliated with nor endorsed by any of the trademark owners. The "Bluetooth®" word mark and logos are registered trademarks owned by Bluetooth SIG, Inc. The "Wi-Fi®" word mark and logos are registered trademarks owned by the Wi-Fi Alliance. Any use of these marks on this website does not imply any affiliation with or endorsement.