



## TASTEMAKER 195570000007 Infinity Game Table User Guide

[Home](#) » [TASTEMAKER](#) » TASTEMAKER 195570000007 Infinity Game Table User Guide

### Contents [ [hide](#) ]

- [1 TASTEMAKER 195570000007 Infinity Game Table](#)
- [2 IMPORTANT SAFETY INSTRUCTIONS](#)
- [3 INSTALLATION](#)
- [4 SAFETY PRECAUTIONS](#)
- [5 CONTENTS INCLUDED](#)
- [6 PRODUCT FEATURES](#)
- [7 PRODUCT ASSEMBLY](#)
- [8 SPECIFICATIONS](#)
- [9 FCC STATEMENT](#)
- [10 Documents / Resources](#)
  - [10.1 References](#)
- [11 Related Posts](#)



**TASTEMAKER 195570000007 Infinity Game Table**



## IMPORTANT SAFETY INSTRUCTIONS

1. Read these Instructions
2. Keep these Instructions /
3. Heed all Warnings
4. Follow all instructions
5. DO NOT sit or stand on the table in any way
6. DO NOT use as a step
7. DO NOT allow children to climb or hang on product
8. DO NOT drop any heavy objects on the glass table top
9. DO NOT hit or bang the glass table top
10. DO NOT use this apparatus near water
11. DO NOT put extremely hot or cold cups on glass as glass can break.
12. If liquid is spilled on the table, wipe it out immediately. Unplug the power supply before cleaning. Note: your game will automatically save
13. Clean only with a dry cloth. This is a glass top use with care
14. Do not block any ventilation openings. Install in accordance with the manufacturer's instructions
15. Do not install near any heat sources such as radiators, heat registers, stoves, or other apparatus (including amplifiers) that produce heat
16. Do not defeat the safety purpose of the polarized or grounding – type plug. A polarized plug has two blades with one wider than the other. A grounding type plug has two blades and a third grounding prong. The wide blade or the third prong are provided for your safety. When the provided plug does not fit into your outlet, consult an electrician for replacement of the obsolete outlet
17. Protect the power cord from being walked on or pinched particularly at plugs, convenience receptacles, and the point where they exit from the apparatus

18. Only use attachments/accessories specified by the manufacturer
19. Unplug this apparatus during lightning storms or when unused for long periods of time
20. Refer all servicing to qualified service personnel. Servicing is required when the apparatus has been damaged in any way, such as power-supply cord or plug is damaged, liquid has been spilled or objects have fallen into the apparatus, the apparatus has been exposed to rain or moisture, does not operate normally, or has been dropped
21. The equipment shall be used at working ambient temperature 32° – 95°F (0° – 35°C)

## INSTALLATION

This Game Table is designed for indoor and personal use only. It must not be installed outdoors. The following conditions must be avoided

1. Direct exposure to sunlight, high humidity, direct water contact, dust, high heat, or extreme cold
2. Vibration. The Game Table must be installed on a level surface
3. Do not install in an area such that the Game Table would present an obstacle in case of an emergency
4. Do not use outdoors

## SAFETY PRECAUTIONS

The following symbols are used in labels on the game to draw attention to potentially hazardous situations:

**WARNING :** Failure to avoid the risk may result in death or serious injury. Electrical Shock Hazard. Disconnect power before removing cover. Should only be done by a qualified technician. To reduce the risk of fire or electric shock, do not expose this apparatus to rain or moisture.

1. Please read and comprehend all warnings stated in this manual
2. Do not get Game Table wet when cleaning
3. Parents and guardians: Please read entire manual before allowing gamer to play
4. The AC/DC adapter and apparatus shall not be exposed to dripping or splashing and that no object filled with liquids, such as vases, shall be placed on apparatus. The AC/DC adapter is used as disconnect device. The AC/DC adapter of apparatus should not be obstructed OR should be easily accessed during intended use. To be completely disconnect the power input, the AC/DC adapter of apparatus shall be disconnected from the mains
5. If appliance is provided with protective earth terminal, it should be connected to main outlet with a protective earth connection
6. Minimum distances 10 cm / 3.94 inches around the apparatus for sufficient ventilation
7. The ventilation should not be impeded by covering the ventilation openings with items such as newspaper, table-cloths, curtains etc
8. No naked flame sources such as lighted candles should be placed on the apparatus
9. The apparatus should only be used in moderate climates

## EPILEPSY WARNING

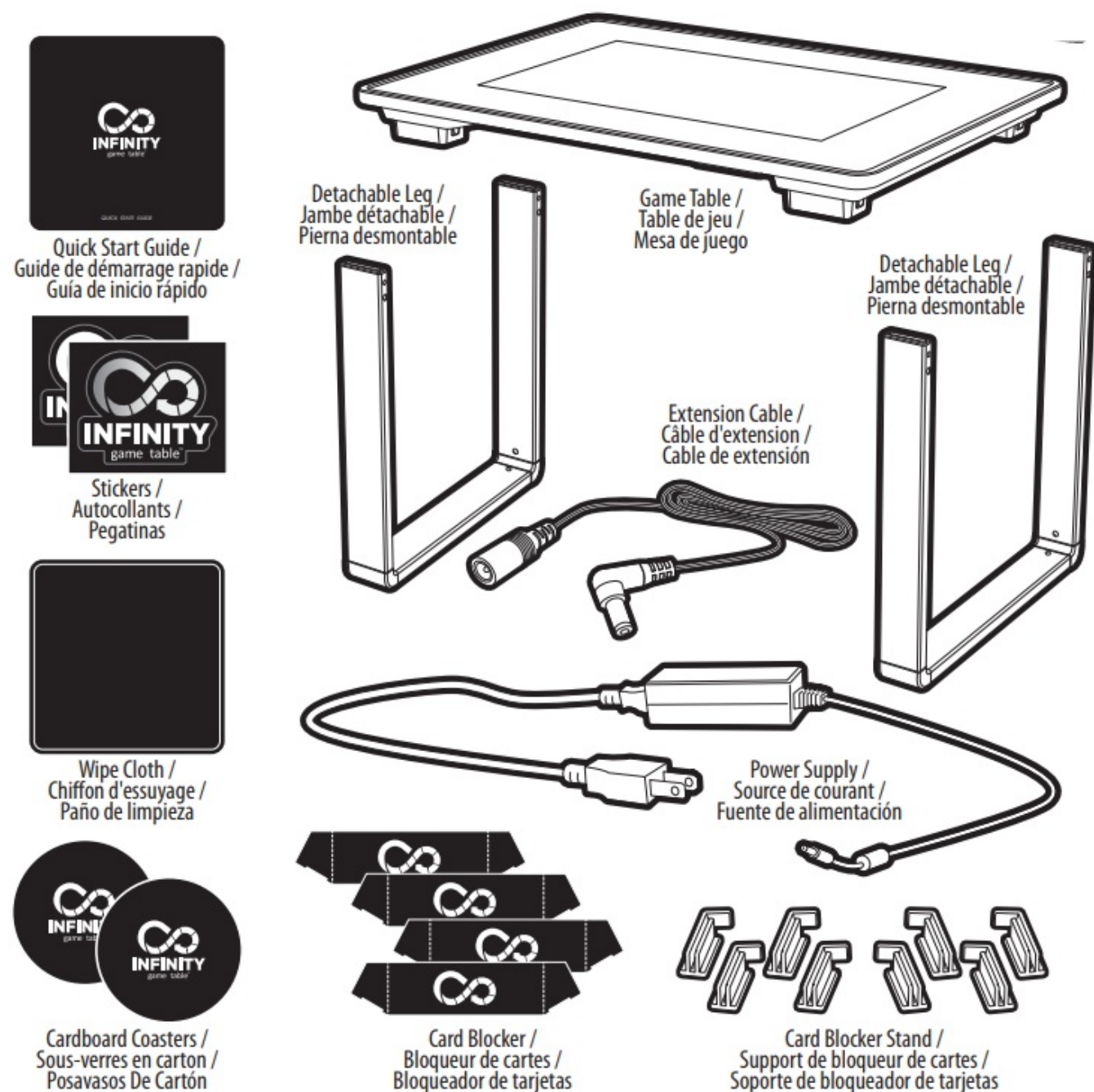
A very small percentage of individuals may experience epileptic seizures or blackouts when exposed to certain light patterns or flashing lights. Exposure to certain patterns or backgrounds on a television screen or when playing video games may trigger epileptic seizures or blackouts in these individuals. To reduce the risk of such a

seizure incident, it is recommended to take a 10-15 minute break at each hour of playing.

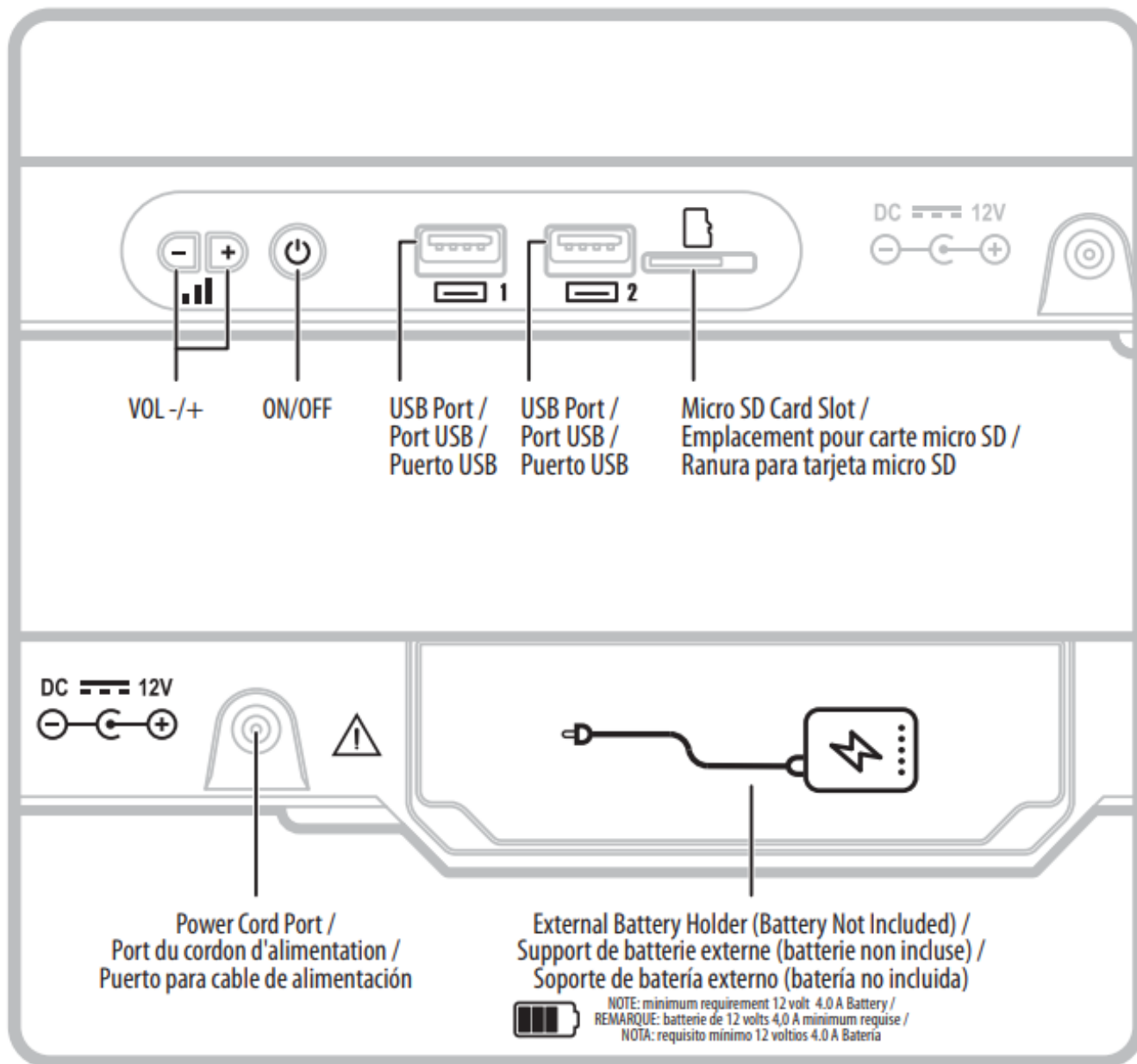
This device contains licence-exempt transmitter(s)/receiver(s) that comply with Innovation, Science and Economic Development Canada's license-exempt RSS(s). Operation is subject to the following two conditions:

1. This device may not cause interference.
2. This device must accept any interference, including interference that may cause undesired operation of the device.

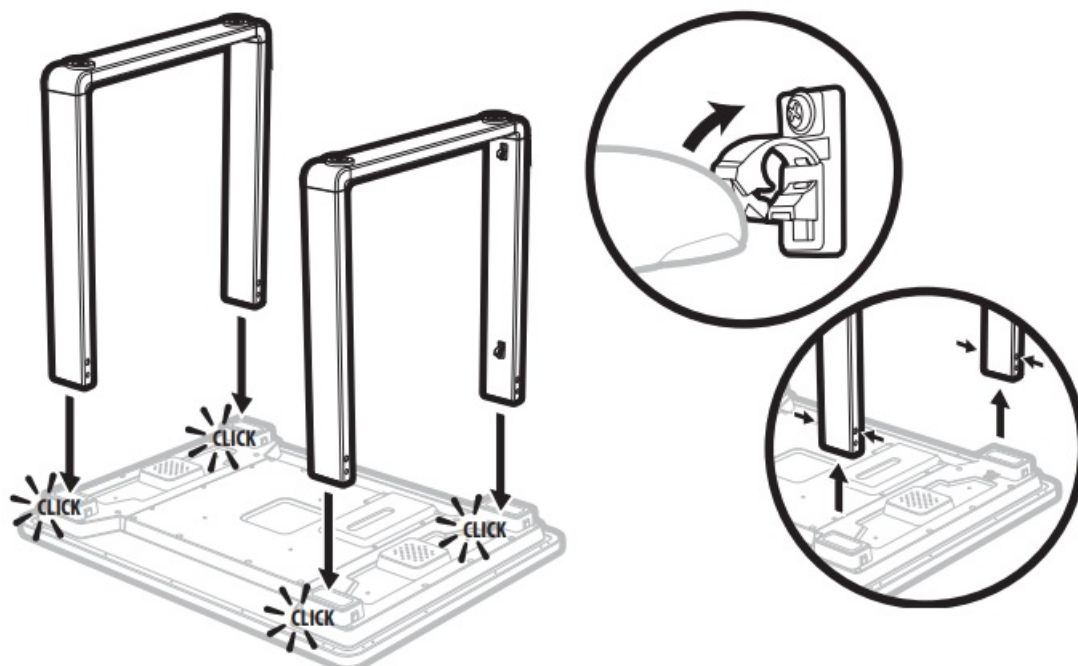
## CONTENTS INCLUDED



## PRODUCT FEATURES



## PRODUCT ASSEMBLY

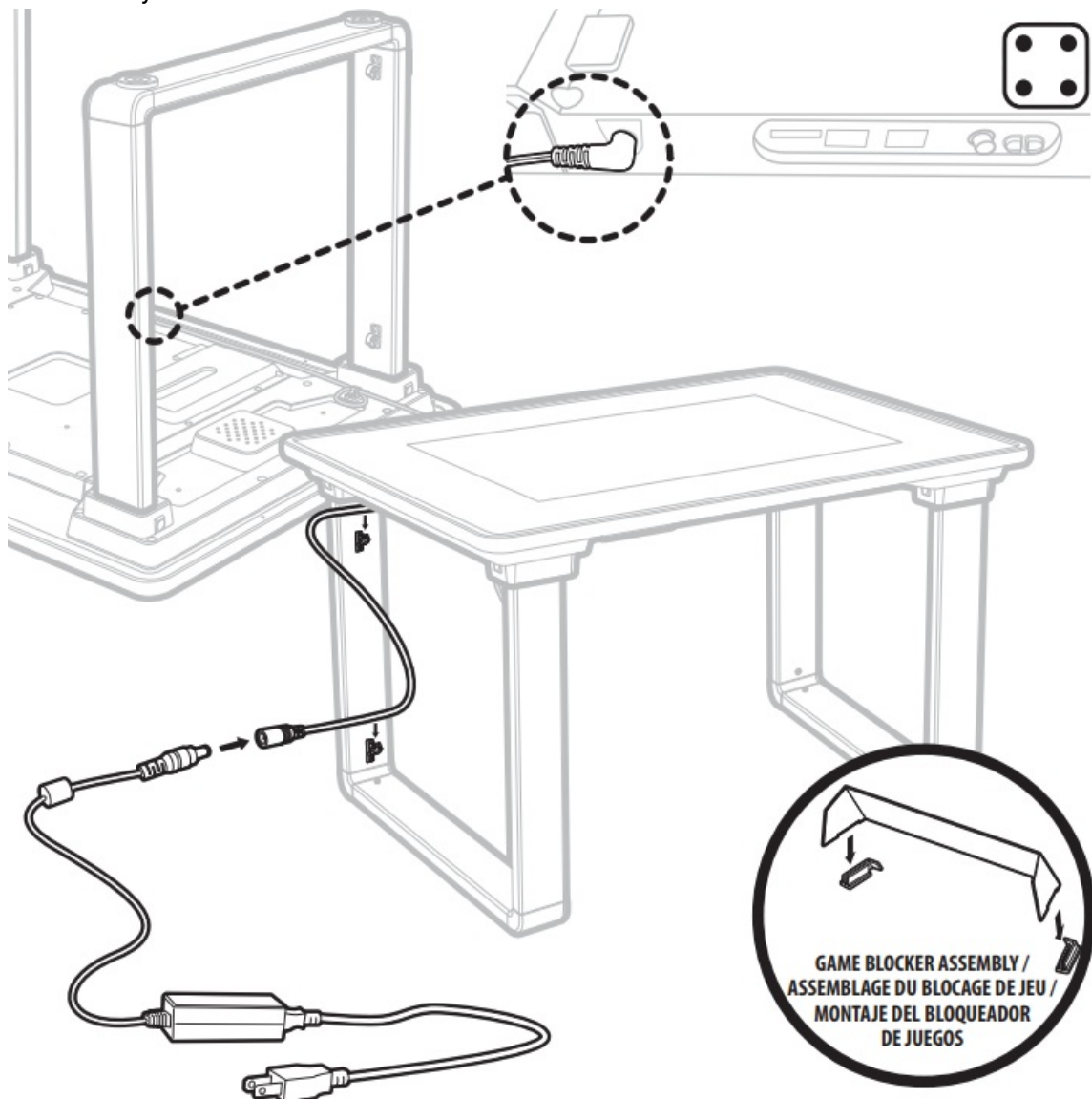


- Insert the legs until you hear a click sound on all 4 legs
- Plug in the extension power wire and clip to the inside of the leg
- Plug in the power supply to the table

## WARNING

- Set up Game Table on a level floor.
- Never allow children to climb or hang on product.
- DON'T sit or stand on the Game Table.
- DON'T use as a step.
- If liquid spilled on the Game Table, wipe it off immediately.

Make sure to locate your Game Table on a flat surface



## SPECIFICATIONS

This product is intended for use only with the adapter provided /

- POWER SUPPLY: AC/DC Adapter
- INPUT POWER: AC 100-240V~50/60Hz 2A Max

- OUTPUT POWER: DC12V — 4A
- MONITOR: 23.8" (60.45cm) LCD
- ASSEMBLED DIMENSIONS: 22 IN x 31.5 IN x 21.5 IN (55.8 CM x 80 CM x 54.6 CM)

1. The AC/DC adapter is used as the disconnect device
2. The AC/DC adapter of apparatus should not be obstructed OR should be easily accessed during intended used
3. To completely disconnect the power input, the AC/DC adapter of the apparatus shall be disconnected from the mains

## FCC STATEMENT

This device complies with part 15 of the FCC rules. Operation is subject to the following two conditions:

1. This device may not cause harmful interference, and
2. this device must accept any interference received, including interference that may cause undesired operation.

**Warning:** Changes or modifications to this unit not expressly approved by the party responsible for compliance could void the user's authority to operate the equipment.


**NOTE:** This equipment has been tested and found to comply with the limits for a Class B digital device, pursuant to Part 15 of the FCC rules. These limits are designed to provide reasonable protection against harmful interference in a residential installation. This equipment generates, uses, and can radiate radio frequency energy and, if not installed and used in accordance with the instructions, may cause harmful interference to radio communications. However, there is no guarantee that interference will not occur in a particular installation. If this equipment does cause harmful interference to radio or television reception, which can be determined by turning the equipment off and on, the user is encouraged to try to correct the interference by one or more of the following measures:

- Reorient or relocate the receiving antenna
- Increase the separation between the equipment and receiver
- Connect the equipment into an outlet on a circuit different from that to which the receiver is connected
- Consult the dealer or an experienced radio / TV technician for help

## ASSISTANCE OR SERVICE

Before contacting us for assistance or service, please check the "Troubleshooting" section in the Quick Start Guide [WWW.INFINITYGAMETABLE.COM/SUPPORT](http://WWW.INFINITYGAMETABLE.COM/SUPPORT)

## Documents / Resources

	<p><a href="#">TASTEMAKER 19557000007 Infinity Game Table</a> [pdf] User Guide 80718207, 2APXH80718207, 195570000007 Infinity Game Table, 195570000007, Infinity Game Table</p>
---	---

## References

-  [Arcade1Up | Officially Licensed Arcade Cabinets](#)

-  [Support Portal – Infinity Game Table](#)

[Manuals+](#), [home](#) [privacy](#)