



TAS103E Tassimo Happy Instruction Manual

[Home](#) » [TASSIMO](#) » TAS103E Tassimo Happy Instruction Manual 

Contents

- [1 TAS103E Tassimo Happy](#)
- [2 Product Information](#)
- [3 Product Usage Instructions](#)
- [4 Safety](#)
- [5 Overall view](#)
- [6 Troubleshooting](#)
- [7 Technical specifications](#)
- [8 Disposing of old appliance](#)
- [9 Documents / Resources](#)
 - [9.1 References](#)
- [10 Related Posts](#)



TAS103E Tassimo Happy



Specifications

- Model: TAS10x
- Power: 1400 W
- Voltage: 220-240V
- Frequency: 50/60 Hz

Product Information

The TAS10x is a versatile appliance designed for preparing a variety of hot beverages quickly and easily. It features a user-friendly interface and efficient performance to enhance your beverage-making experience.

Product Usage Instructions

Initial Setup

1. Connect the appliance to a power source with the correct voltage and frequency.
2. Follow the setup instructions provided in the user manual for the first-time use.

Beverage Preparation

1. Fill the water tank with fresh, cold water.
2. Insert the desired T DISC for your beverage choice.
3. Follow the brewing instructions in the manual to prepare your drink.

Cleaning and Maintenance

1. Regularly clean the appliance following the cleaning instructions provided.
2. Periodically descale the appliance to maintain optimal performance.

FAQ

Q: What should I do if the LED lights on the appliance indicate a problem?

A: If you encounter issues with the LED lights, follow these steps:

1. Check the power supply and reconnect if necessary.
2. Contact TASSIMO Infoline if problems persist.

Q: How do I troubleshoot water-related issues with the appliance?

A: If you face water-related problems:

1. Ensure the water tank is filled correctly.
2. Check for any blockages in the water system.
3. Contact TASSIMO Infoline for further assistance.

<https://digitalguide.bsh-group.com?mat-no=8001305608>



Scan the QR code or visit the website to open the Further Notices for Use. You can find additional information about your appliance or accessory here.

Safety

- Read this instruction manual carefully.
- Keep the instruction manual and the product information safe for future reference or for the next owner.
- Do not connect the appliance if it has been damaged in transit. Only use this appliance:
 - for preparing hot drinks.
 - in private households and in enclosed spaces in a domestic environment.
 - up to an altitude of max. 2000 m above sea level.
- This appliance may be used by children aged 8 or over and by people who have reduced physical, sensory or mental abilities or inadequate experience and/or knowledge, provided that they are supervised or have been instructed on how to use the appliance safely and have understood the resulting dangers.
- Do not let children play with the appliance.
- Children must not perform cleaning or user maintenance unless they are at least 8 years old and are being supervised.
- Keep children under the age of 8 years away from the appliance and power cable.
- Keep packaging material away from children.
- Do not let children play with packaging material.
- Keep small parts away from children.
- Do not let children play with small parts.
- Connect and operate the appliance only in accordance with the specifications on the rating plate.

- Connect the appliance to a power supply with alternating current only via a properly installed socket with earthing.
- The protective conductor system of the domestic electrical installation must be properly installed.
- Never operate a damaged appliance.
- Never operate an appliance with a cracked or fractured surface.
- Never pull on the power cord to unplug the appliance. Always unplug the appliance at the mains.
- If the appliance or the power cord is damaged, immediately unplug the power cord or switch off the fuse in the fuse box.
- Call customer services. → Page 23
- Repairs to the appliance should only be carried out by trained specialist staff.
- Only use genuine spare parts when repairing the appliance.
- If the power cord of this appliance is damaged, it must be replaced by the manufacturer, the manufacturer's Customer Service or a similarly qualified person in order to prevent any risk.
- Never immerse the appliance or the power cord in water.
- Liquids must not be spilled on the appliance plug connection.
- Only use the appliance in enclosed spaces.
- Never expose the appliance to intense heat or humidity.
- Do not use steam- or high-pressure cleaners to clean the appliance.
- Ventilate the appliance adequately.
- Never operate the appliance in a cabinet.
- Never leave the appliance unattended while it is switched on.
- Do not use extension cables or multiple socket strips.
- Only use adapters and power cords approved by the manufacturer.
- If the power cord is too short and a longer one is not available, please contact an electrician to have the domestic installation adapted.
- Never open the brewing system during operation.
- Only use the original Tassimo T DISCs.
- Never use a damaged T DISC.
- Never use a drinks T DISC more than once.
- Never touch hot appliance parts.
- After use, allow hot appliance parts to cool down before touching.
- Leave drinks to cool down if necessary.
- Do not let escaping liquids or steam come into contact with your skin.
- To avoid injuries, only use the appliance for its intended purpose.
- Be careful of your fingers when inserting or cleaning the T DISC.
- People with electronic implants must stand at least 10 cm away from the appliance.
- This minimum distance of 10 cm must also be observed for the water tank when removed.

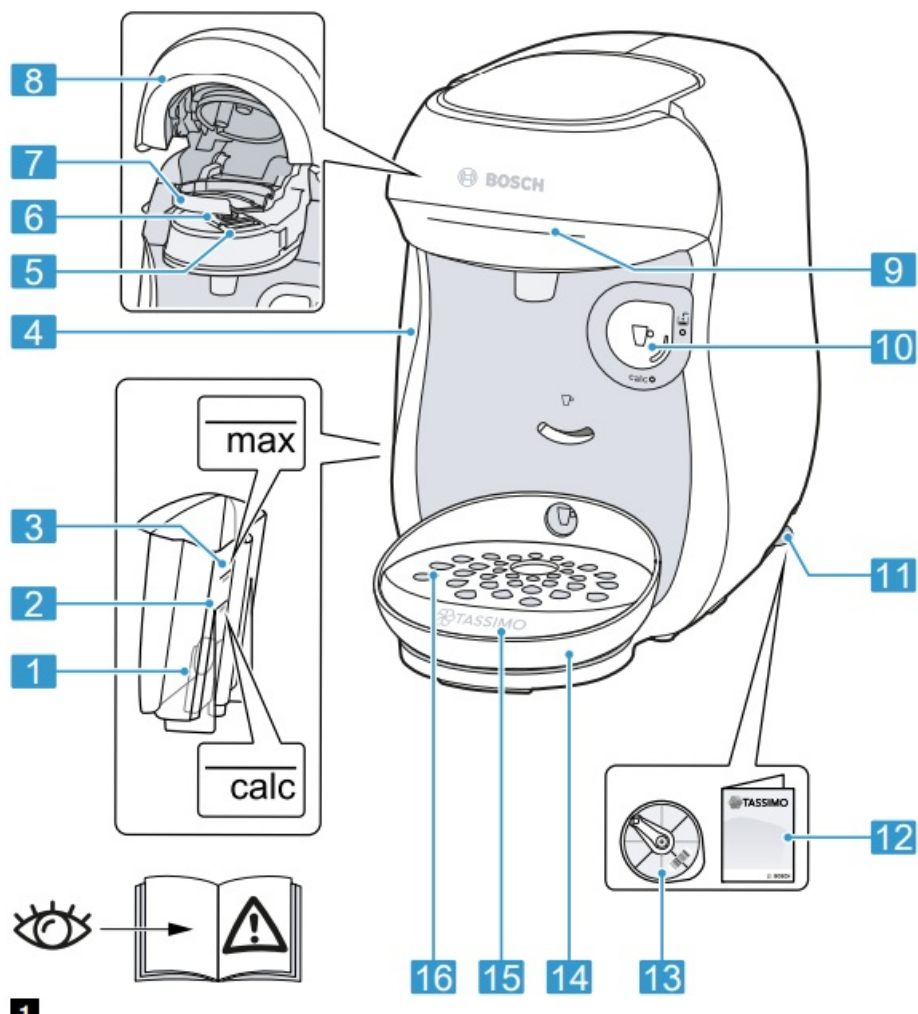
To ensure hygiene, follow the cleaning instructions for the appliance.

Overall view

You can find an overview of the parts of your appliance here.

Note: Individual details and colours may differ, depending on the appliance model.




→ Fig. 1



1. Float
2. Calc mark
3. Max mark
4. Water tank
5. T DISC reading window
6. T DISC piercing unit
7. T DISC holder
8. Lock
9. Brewing system
10. Control panel
11. Storage compartment
12. Brief cleaning / descaling instructions
13. Service T DISC
14. Bowl
15. Cup stand
16. Drip grate

Control panel

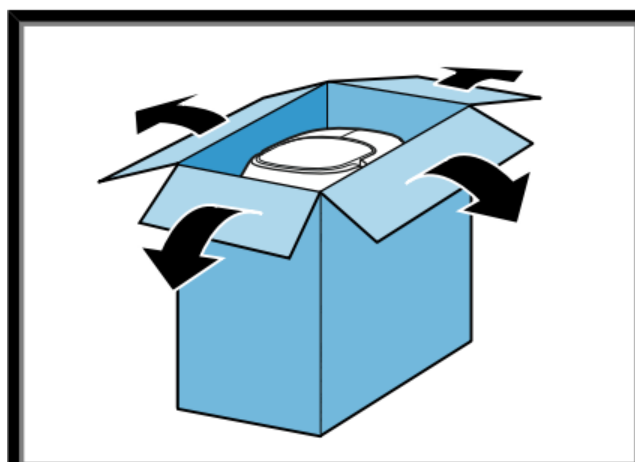
You can use the control panel to configure all functions of your appliance and to obtain information about the operating status.

	<ul style="list-style-type: none">■ Activate the appliance.■ Start, stop and prolong dispensing of drinks.■ Start service programme.
	Fill water tank.
	Display status.
calc	Descal appliance.

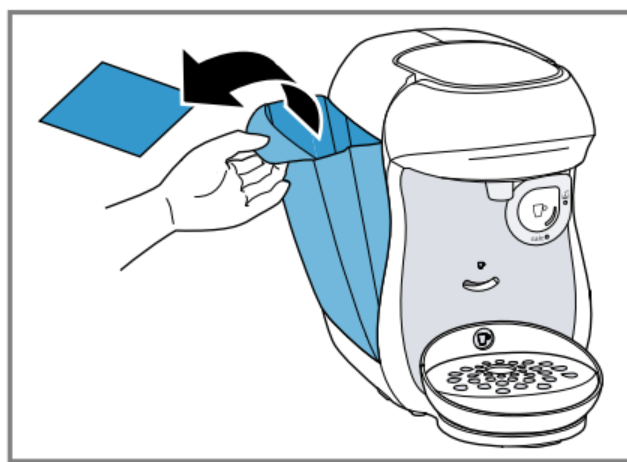
Performing initial start-up

Follow the pictorial instructions at the start of these instructions.

→ Fig. 2 – 14



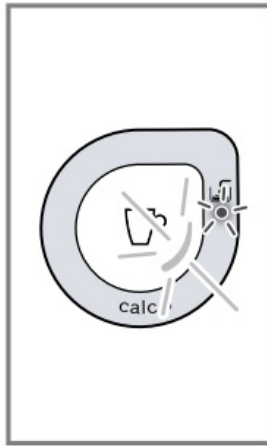
2



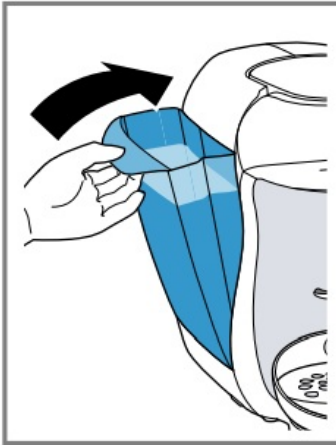
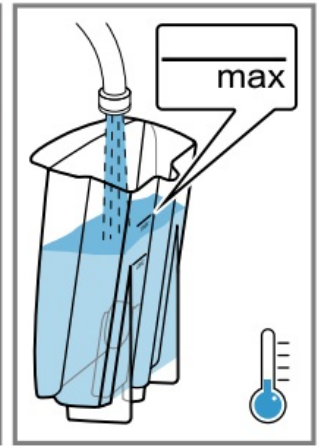
3



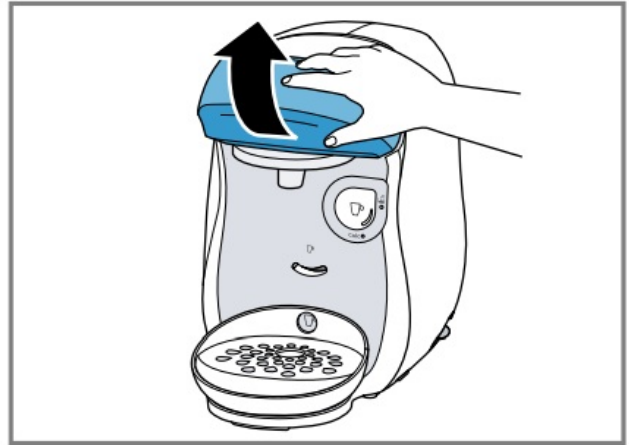
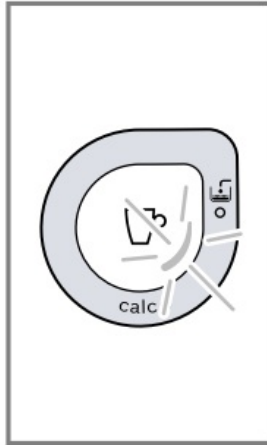
4



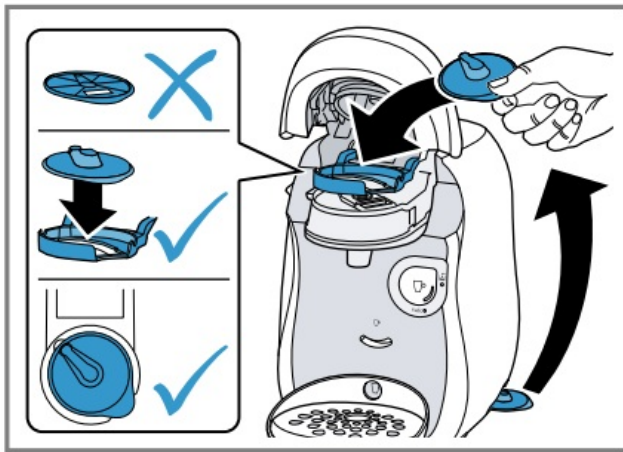
5



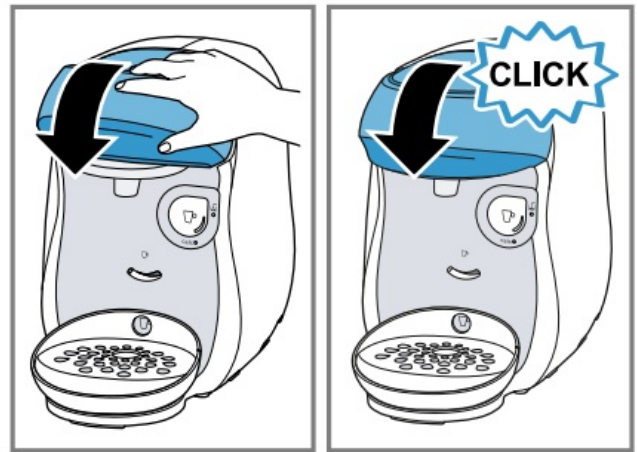
6



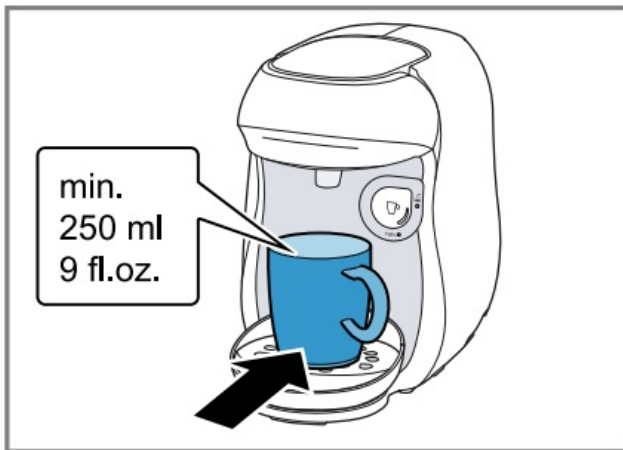
7



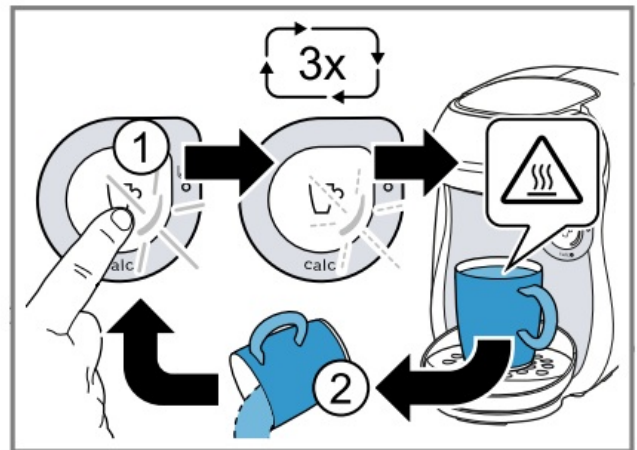
8



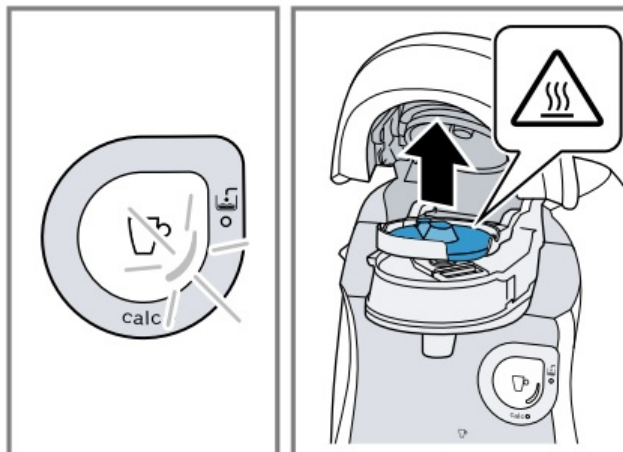
9



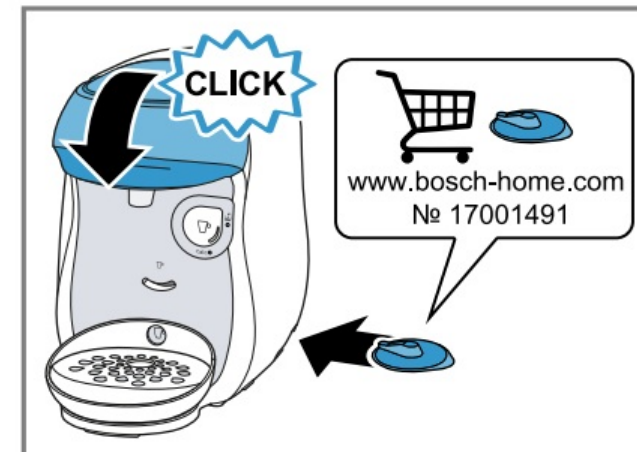
10



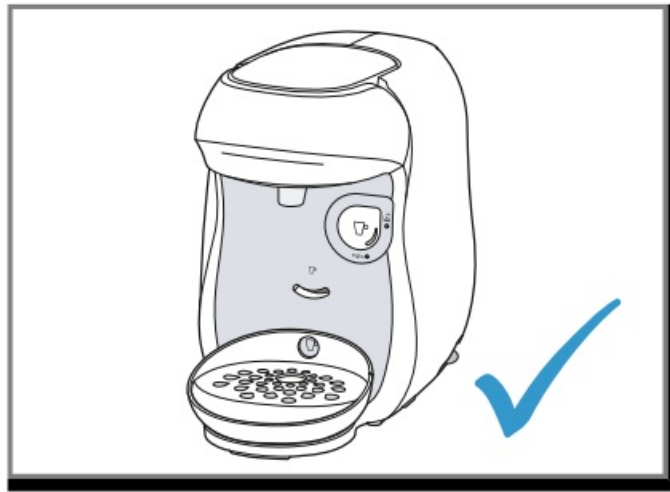
11



12



13



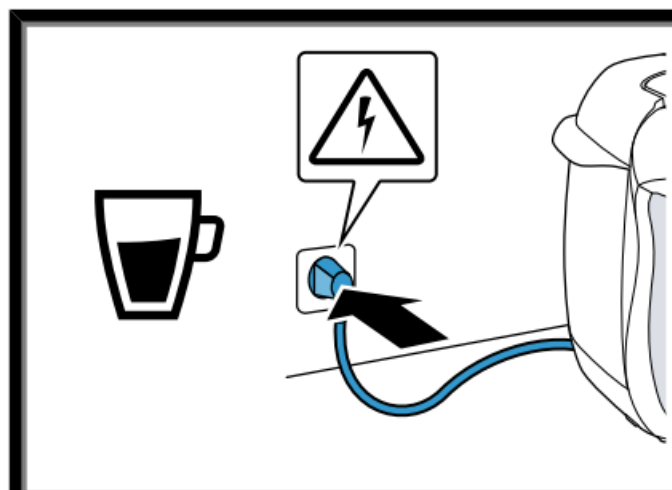
14

Note: You can prepare a wide range of hot beverages with the multiple hot drinks machine. When you insert a T DISC, the scanner reads the barcode and controls the flow of hot water automatically.

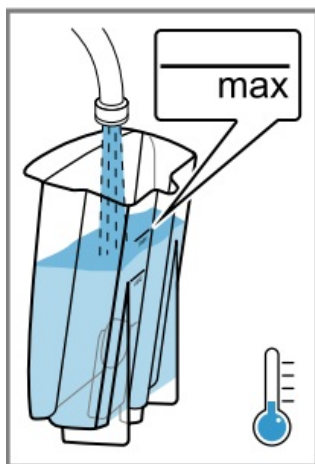
Preparing a drink

dr ink a Pr epar ing Find out how to prepare a drink of your choice. Follow the pictorial instructions at the start of these instructions.

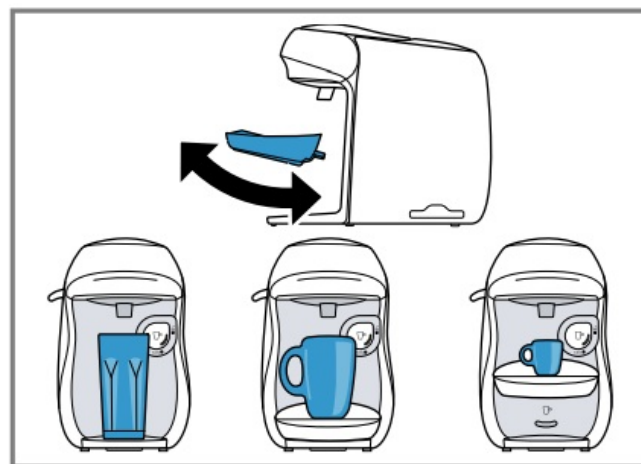
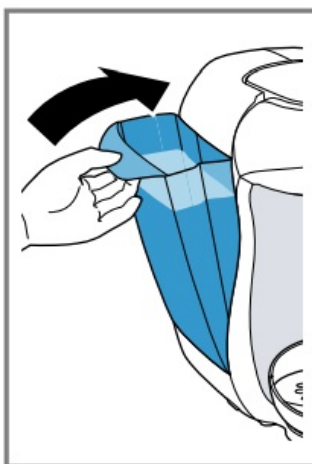
→ Fig. 15 – 26



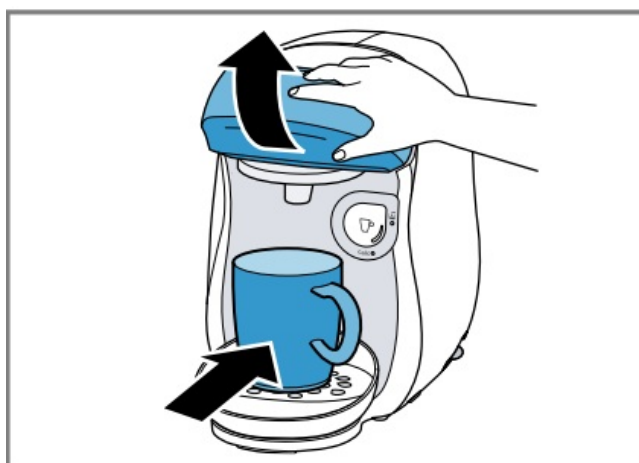
15



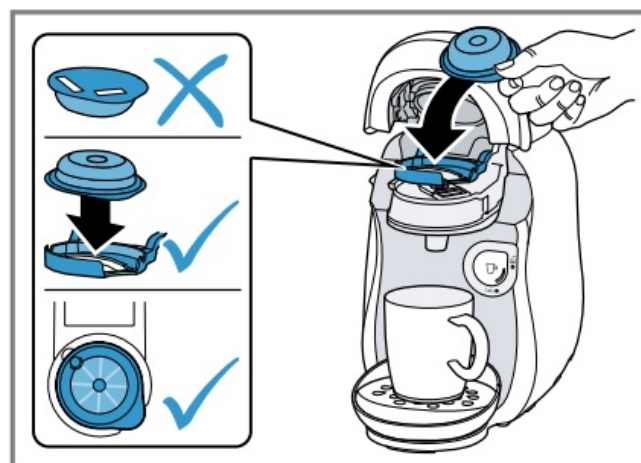
16



17



18



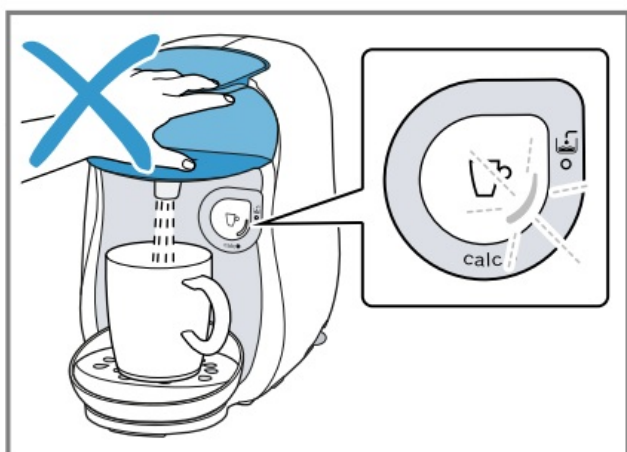
19



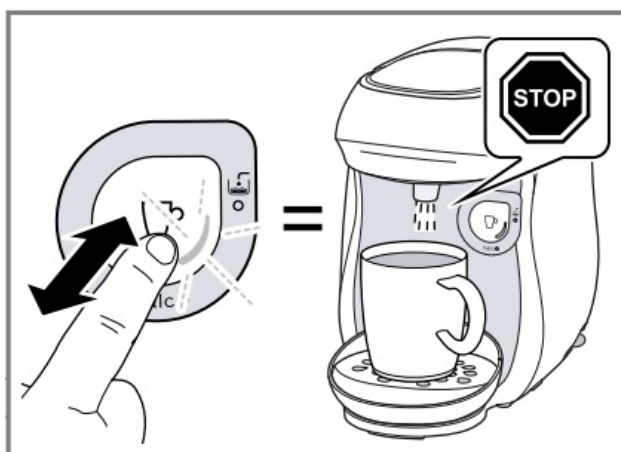
20



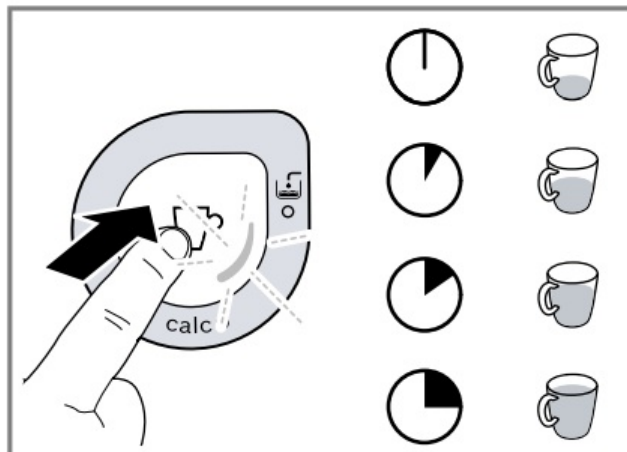
21



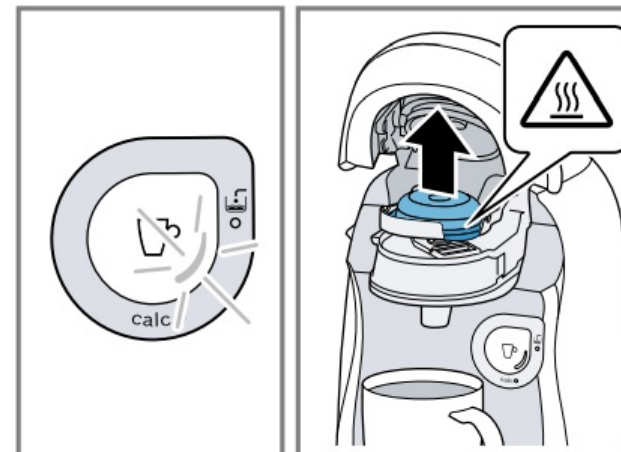
22



23



24





25



26

Note: Fill the water tank each day with fresh, cold, non-carbonated water.

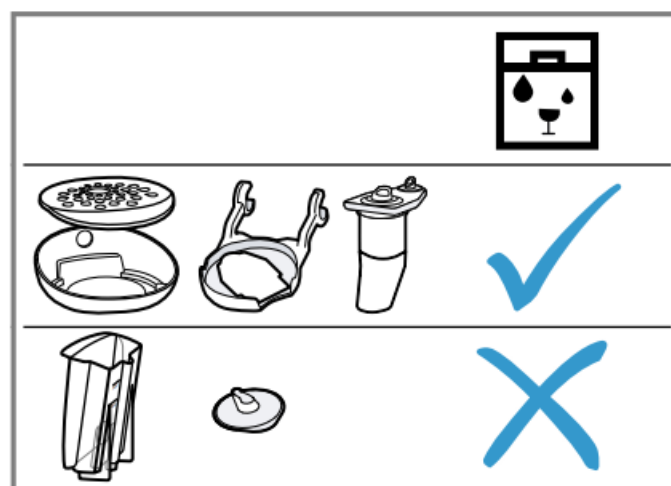
Tips

- Do not use chemically decalcified water.
- You can also pre-heat cups before dispensing using hot water.
- To interrupt the dispensing process, briefly press .
- To prolong dispensing, press and hold  until the required quantity is reached.

Dishwasher-safe components

Here you can find an overview of the components you can clean in the dishwasher.

→ Fig. 27

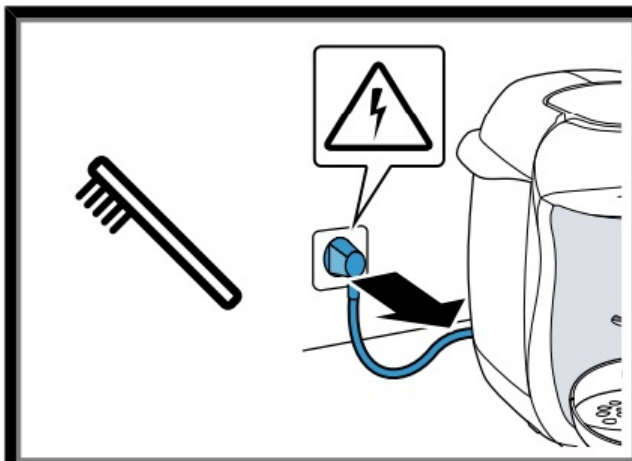


27

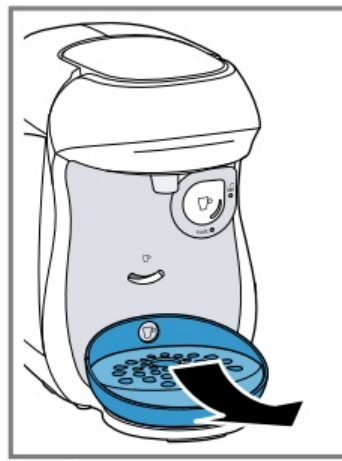
Cleaning the appliance

Follow the pictorial instructions at the start of these instructions.

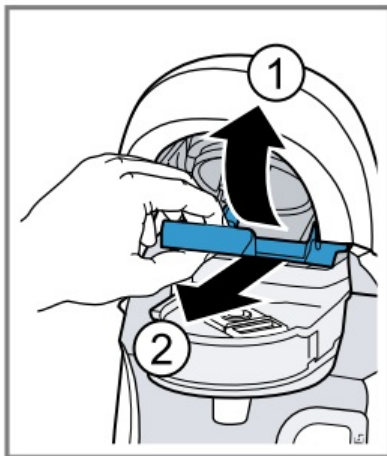
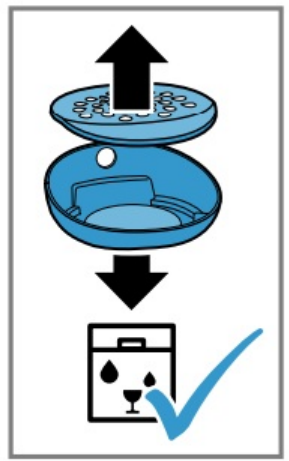
→ Fig. 28 – 43



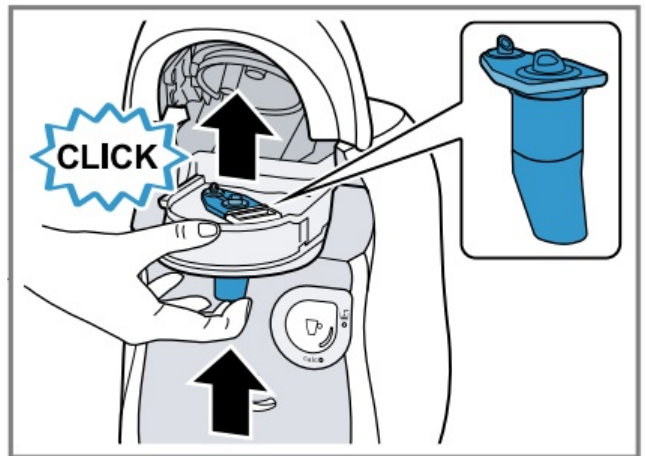
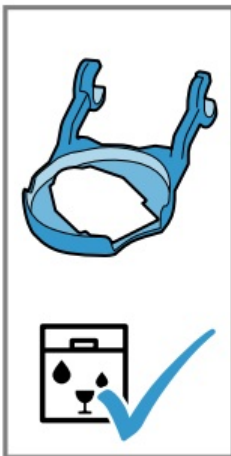
28



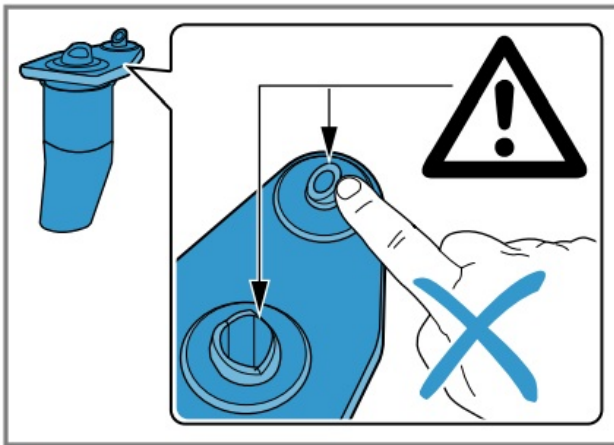
29



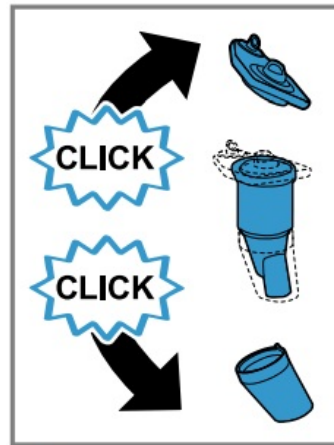
30



31



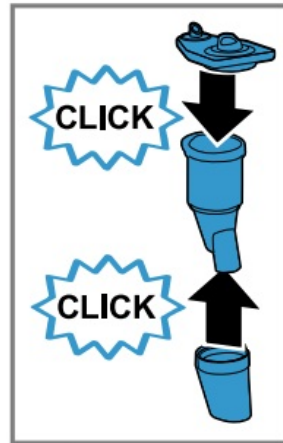
32



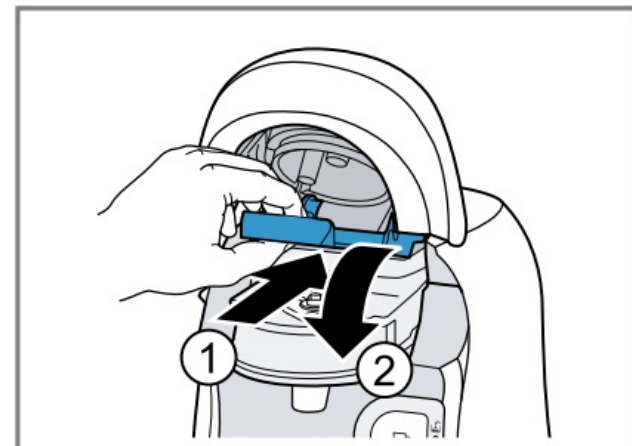
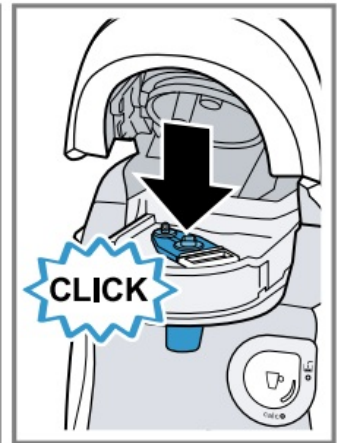
33



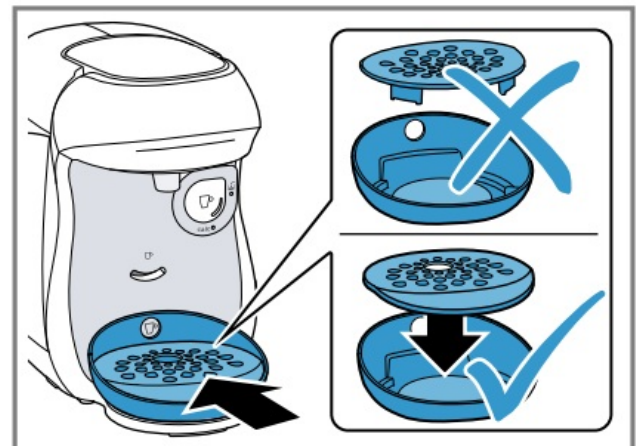
34



35



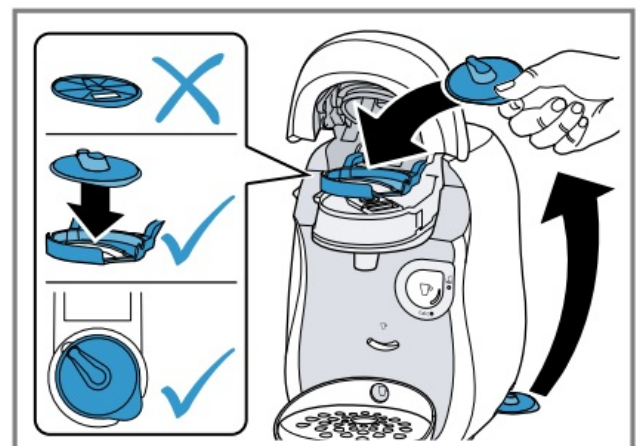
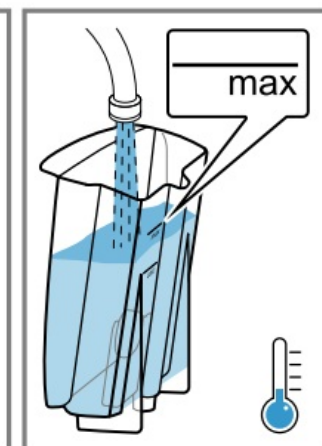
36



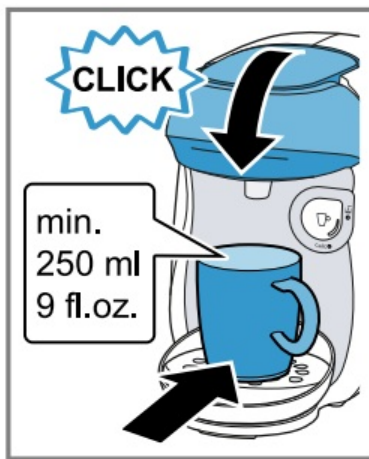
37



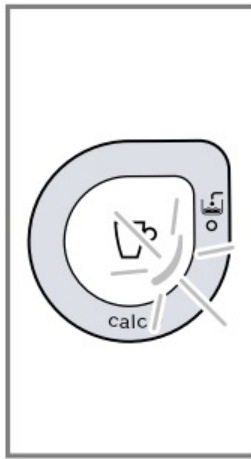
38



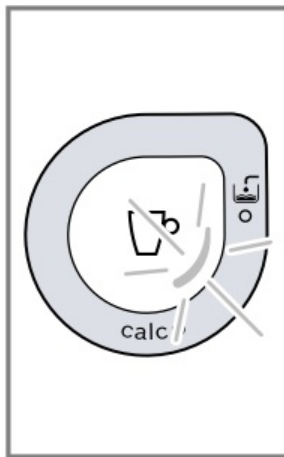
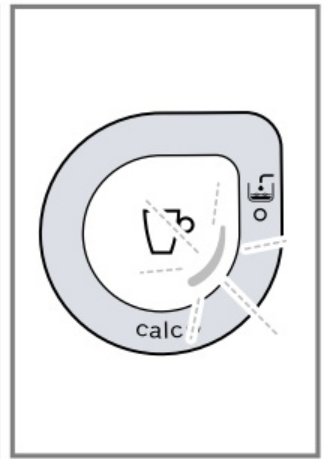
39



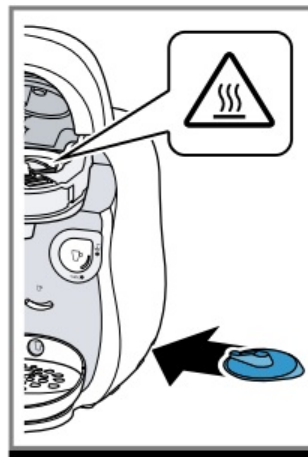
40



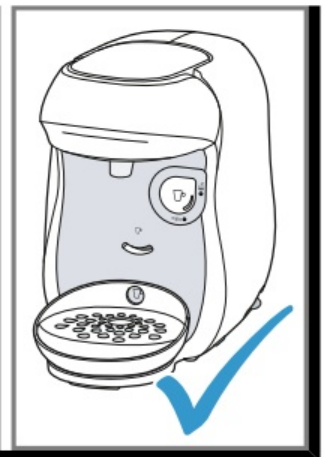
41



42



43



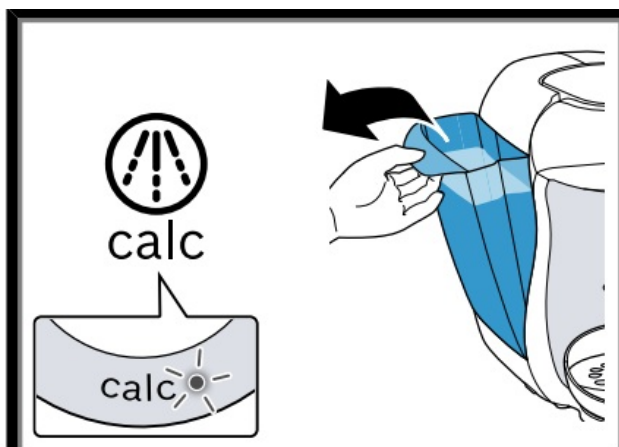
Descale the appliance

Descale If lights up, run the descaling programme.

Follow the illustrated instructions at the beginning of this manual.

- Immediately perform the descaling process in accordance with the instructions
- Do not use descaling agent with phosphoric acid.

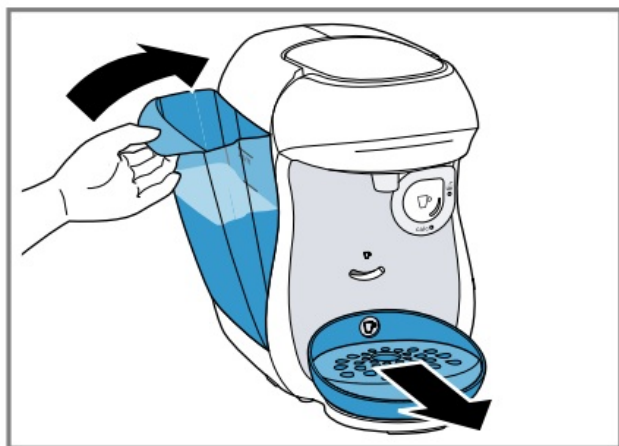
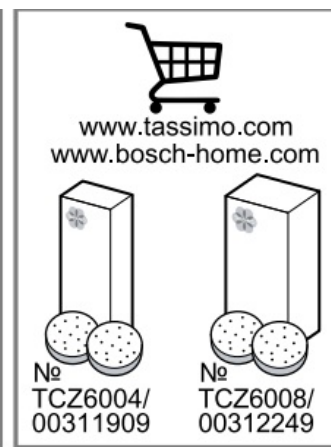
→ Fig. 44 – 58



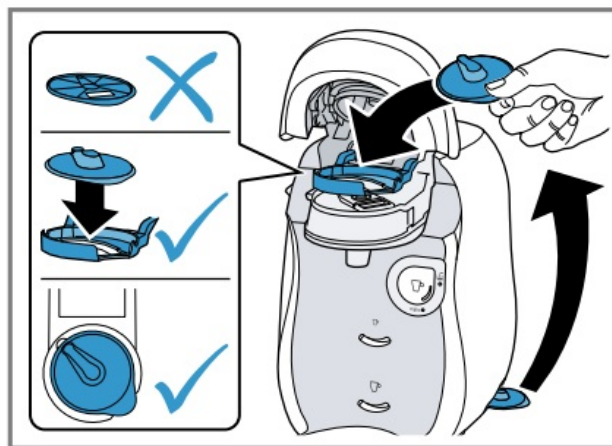
44



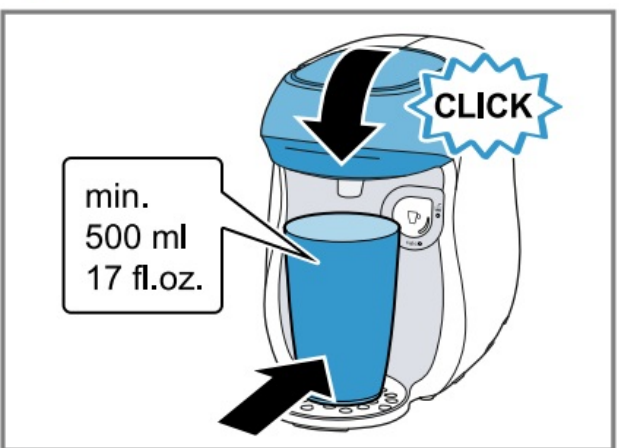
45



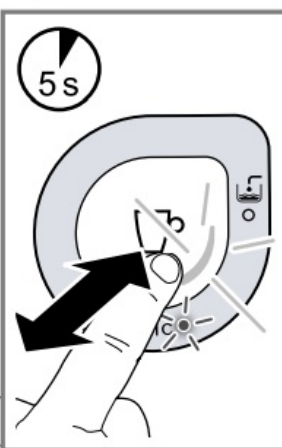
46



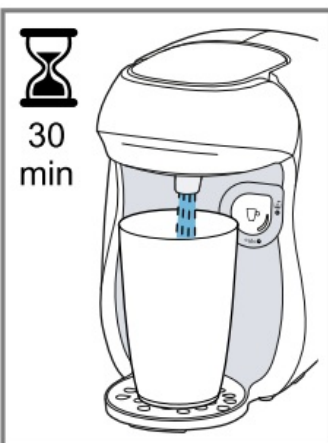
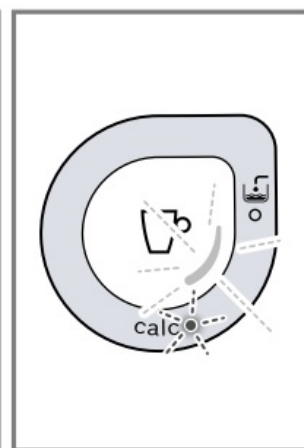
47



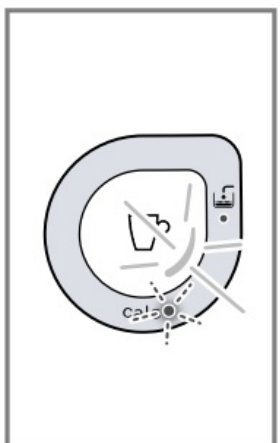
48



49



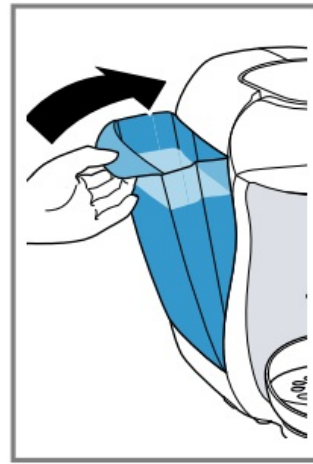
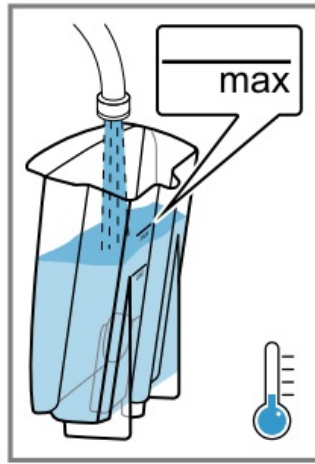
50



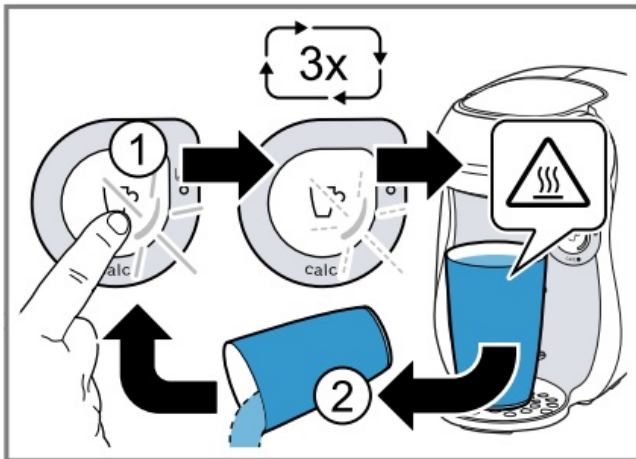
51



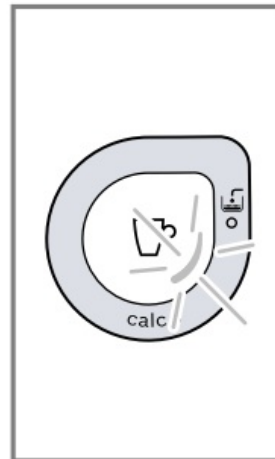
52



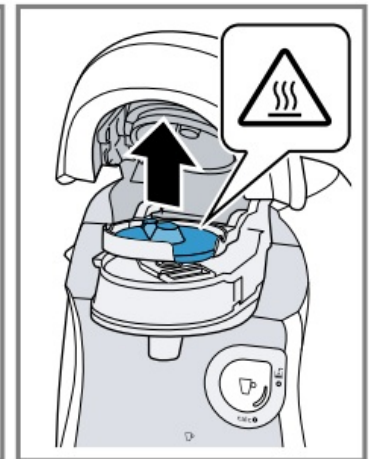
53

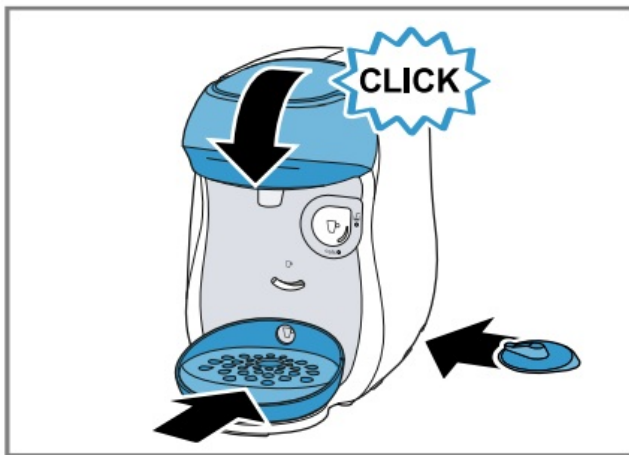


54

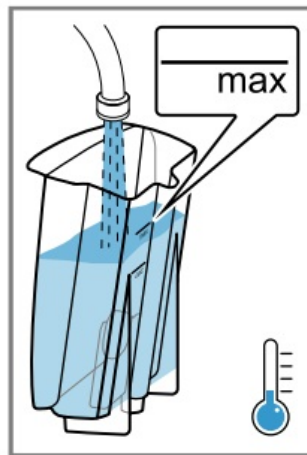


55

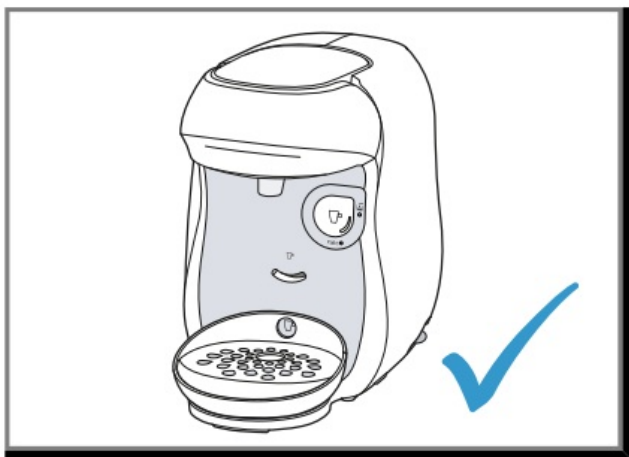
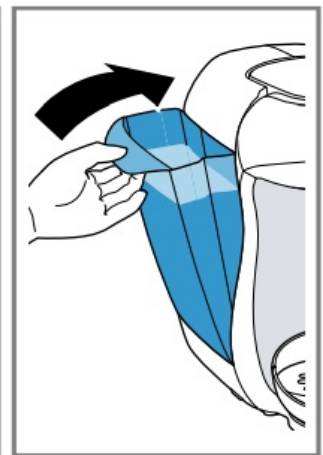




56



57



58

Troubleshooting

Repairs to the appliance should only be carried out by trained specialist staff.

- Only use genuine spare parts when repairing the appliance.
- If the power cord of this appliance is damaged, it must be replaced by the manufacturer, the manufacturer's Customer Service or a similarly qualified person in order to prevent any risk.

The appliance is not working.

LEDs do not light up.

The appliance has no power supply.

- Check to see whether the appliance is connected to the mains.

Brewing process starts, drink is not dispensed.

Water tank was removed during brewing and inserted again or appliance has not been used for a long time.

Start cleaning with the Service T DISC. Float is stuck in the water tank.

1. Descale the appliance. → "Descale the appliance", Page 21
2. Reach into the water tank and move the float up and down.

Brewing process does not start.

Water tank has not been sufficiently filled.

1. Fill the water tank with fresh, cold water up to the mark **max** .
2. Insert the water tank.

Brewing process does not start, status display lights up red.

T DISC has not been correctly inserted.

- Check whether the T DISC is inserted. The T DISC bar code is not recognised.
- Clean the T DISC reading window with a soft, damp cloth.
- Smooth out the film of the T DISC.
- Remove the used T DISC.
- Contact the TASSIMO careline if the problem persists.

The appliance not connected to the power supply when the T DISC was inserted.

Connect the appliance to the power supply before inserting the T DISC.

Brewing unit cannot be closed.

T DISC piercing unit or T DISC holder is not correctly inserted.

1. Press the T DISC piercing unit into the holder until it clicks audibly into place.
2. Check the position of the T DISC holder.

T DISC has not been correctly inserted.

1. Insert the T DISC with the printed side facing downwards.
2. Check whether the tab of the T DISC is in the recess.

Brewing unit cannot be opened.

Brewing unit is locked.

- Only open the brewing unit when the status display remains lit continuously.
- If the brewing unit remains locked, contact the TASSIMO careline.

Water is dripping from the brewing unit.

T DISC is damaged or not correctly inserted.

Use a new T DISC.

T DISC piercing unit is not correctly inserted.

Press the T DISC piercing unit into the holder until it clicks audibly into place.


There is water under the cup stand.

Condensation has formed due to technical reasons or valves are clogged with limescale.

- Descale the appliance.
→ “Descale the appliance”, Page 21

No LED is lit.

Appliance is in idle mode.

- Press  or open or close the brewing system.

All LEDs flashing.

There are problems with the power supply.

1. Pull out the mains plug, wait 5 minutes and plug it back in.
2. If the problem persists, contact the TASSIMO careline.

LED lights up red even though there is enough water in the water tank.

Float is stuck in the water tank.

1. Descale the appliance.
→ “Descale the appliance”, Page 21
2. Reach into the water tank and move the float up and down.

Calc LED lights up although softened water has been used.
Decalcified water still contains small amounts of lime.

- Descale the appliance.

LED and Calc LED flash, brewing is not possible.

Appliance has a fault.

1. Unplug the mains plug.
2. Contact the TASSIMO careline.

Quality of beverages has deteriorated, e.g. crema or volume.

Beverage outlet is soiled.


- Clean the beverage outlet.
- Clean the brewing unit with the T DISC. Build-up of limescale in the appliance.
- Descale the appliance.

Drink volume has reduced.

Drink dispensing halts.

Water tank has not been sufficiently filled.

1. Fill the water tank with fresh, cold water up to the mark **Max**

2. Keep  pressed until the desired fill volume is reached.

Technical specifications

- Voltage 220–240 V ~
- Frequency 50 / 60 Hz
- Power rating 1400 W

Disposing of old appliance

1. Unplug the appliance from the mains.
2. Cut through the power cord.
3. Dispose of the appliance in an environmentally friendly manner.

Information about current disposal methods are available from your specialist dealer or local authority.



■ This appliance is labelled in accordance with European Directive 2012/19/EU concerning used electrical and electronic appliances (waste electrical and electronic equipment – WEEE). The guideline determines the framework for the return and recycling of used appliances as applicable throughout the EU.

Customer Service

Service Customer Detailed information on the warranty period and terms of warranty in your country is available from our after-sales service, your retailer or on our website.

The contact details for Customer Service can be found in the enclosed Customer Service directory or on our website.

HELLO!

Looking for help?

You'll find it here.

Expert advice for your Bosch home appliances, need help with problems or a repair from Bosch experts.

Find out everything about the many ways Bosch can support you: www.bosch-home.com/service

Contact data of all countries are listed in the attached service directory.

Visit tassimo.com for registration, accessories and more.

BSH Hausgeräte GmbH

Carl-Wery-Straße 34
81739 München, GERMANY

www.bosch-home.com

A Bosch Company

Valid within Great Britain:

Imported to Great Britain by
BSH Home Appliances Ltd.





Grand Union House
Old Wolverton Road
Wolverton, Milton Keynes
MK12 5PT
United Kingdom

Documents / Resources



[TASSIMO TAS103E Tassimo Happy](#) [pdf] Instruction Manual
TAS103E, TAS10x, TAS103E Tassimo Happy, TAS103E, Tassimo Happy, Happy

References

-  [Switch stores](#)
-  [Home Appliances Global Website | Bosch](#)
-  [Bosch Service | Service worldwide](#)
-  [Home | BSH Hausgeräte GmbH](#)
- [User Manual](#)

Manuals+. [Privacy Policy](#)

This website is an independent publication and is neither affiliated with nor endorsed by any of the trademark owners. The "Bluetooth®" word mark and logos are registered trademarks owned by Bluetooth SIG, Inc. The "Wi-Fi®" word mark and logos are registered trademarks owned by the Wi-Fi Alliance. Any use of these marks on this website does not imply any affiliation with or endorsement.