



Targus AMW14EU 8-button Wireless Laser Mouse User Guide

[Home](#) » [Support](#) » Targus AMW14EU 8-button Wireless Laser Mouse User Guide 

Contents

- [1 Targus AMW14EU 8-button Wireless Laser Mouse](#)
- [2 Technical Support](#)
- [3 Product Registration](#)
- [4 Warranty](#)
- [5 FCC Statement Tested to Comply](#)
- [6 FAQ's](#)
- [7 Related Posts](#)

Targus®

Targus AMW14EU 8-button Wireless Laser Mouse



CAUTION

- LASER RADIATION. DO NOT STARE INTO THE BEAM OR VIEW DIRECTLY WITH OPTICAL INSTRUMENTS. CLASS I LASER PRODUCT.
- NEVER POINT A LASER BEAM INTO A PERSON'S EYES OR VIEW A LASER BEAM DIRECTLY, AS PROLONGED EXPOSURE CAN BE HAZARDOUS TO THE EYES.
- MOMENTARY EXPOSURE FROM A LASER POINTER, SUCH AS AN INADVERTENT SWEEP OF THE LIGHT ACROSS A PERSON'S EYES, MAY CAUSE TEMPORARY FLASH BLINDNESS SIMILAR TO
- THE EFFECT OF A CAMERA FLASH BULB. ALTHOUGH THIS CONDITION IS TEMPORARY, IT CAN BECOME MORE DANGEROUS IF THE EXPOSED PERSON IS ENGAGED IN A VISION-CRITICAL ACTIVITY SUCH AS DRIVING.

Introduction

Congratulations on your purchase of the Targus 8-Button Laser Wireless Mouse for the desktop. This ergonomically-designed mouse offers the latest in laser tracking technology as well as the most up-to-date wireless features. It allows for improved tracking accuracy on most types of surfaces, even some mirrors and glass. With 6 channels and 256 IDs per channel, the mouse's digital signal processor offers a new level of accuracy and precision in wireless data transmission. Productivity is enhanced by a practical 8-button design that includes such shortcuts as Internet back and forward, applications switch, and scroll up and down functions.

NOTE: WHILE THE MOUSE IS FUNCTIONING, NO LASER LIGHT IS VISIBLE TO THE NAKED EYE. BE CAREFUL NOT TO LOOK DIRECTLY INTO THE EMITTER HOLE WHILE THE MOUSE IS ACTIVE.

Package Contents

- Wireless Laser Mouse
- USB Receiver
- USB Charge Cable
- USB Extension Seat
- 2 x AA Rechargeable Batteries
- User Guide

System Requirements

Hardware

- USB interface

Operating System

- Windows® 2000/XP
- Windows Vista™

For Desktop PCs

For instances where the PC is positioned under a desk or other places that might impede wireless connectivity, the use of the extension seat is recommended.

1. Connect the extension seat to an available USB port on your PC.

2. Plug the USB wireless receiver into the port labeled 'receiver' located at the top of the seat.
3. Connect the USB end of the charging cable to the USB port labeled 'charger' on the extension seat.

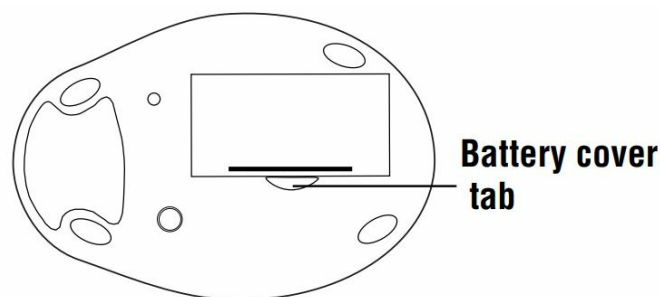
For Notebook PCs

1. Connect the extension seat to an available USB port on your PC.
2. Plug the USB wireless receiver into the port labeled 'receiver' located at the top of the seat.
3. Connect the charge cable's USB end to the USB port labeled 'charger' on the extension seat.

Alternatively, if more than one USB port is available you may opt not to use the extension seat by plugging the receiver and charging cable directly into the notebook PC's open USB ports.

Installing the Batteries

1. Remove the battery cover from the bottom of the mouse by pressing the tab located on the bottom and lifting it off.



Bottom of mouse

2. 2 AA NiMH rechargeable batteries are included. Insert the supplied batteries, making sure that the positive (+) and negative (-) ends of each battery match the polarity indicators inside the battery housing.

WARNINGS: USE ONLY HEAVY-DUTY NIMH RECHARGEABLE BATTERIES. NEVER USE ALKALINE BATTERIES. AVOID MIXING NEW AND USED BATTERIES.

3. Slide the battery cover back into position until it "clicks" firmly into place.

Charging the Mouse

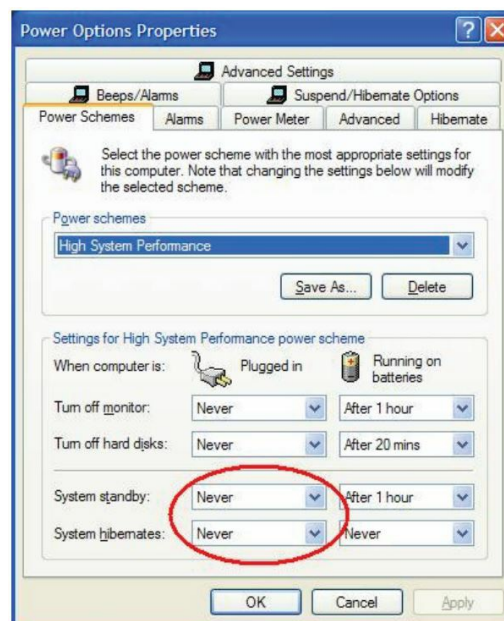
For best results, you should charge the mouse at least eight hours before using it.

1. Connect the supplied charge cable to the charge port on the supplied extension seat and plug the extension seat cable to the USB port on your computer.
2. Connect the other end of the charging cable to the mouse.
3. Alternatively, you can connect the charge cable's USB connector directly into an available USB port on your computer.

NOTE: TO CONTINUOUSLY CHARGE THE MOUSE VIA THE USB CHARGE CABLE, YOUR COMPUTER MUST BE ON AND AWAKE. FOR BEST RESULTS, TURN OFF YOUR COMPUTER'S POWER MANAGEMENT FEATURE WHILE CHARGING THE MOUSE.

Operating Notes for Wireless Mice with Recharging Feature via USB Cable

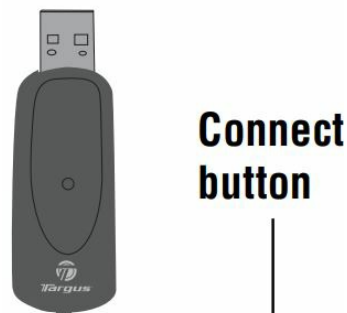
1. Charge the mouse for at least 8 hours before using it. And please make sure only rechargeable batteries (the ones that come with your product) are used.
2. Your computer needs to stay powered on for the mouse to charge. Follow these steps to prevent your computer from going in to Standby or Hibernate:
 - a) Click "Start"
 - b) Click "Control Panel"
 - c) Click "Performance and Maintenance" (Skip in Classic View)
 - d) Click "Power Options"
 - e) Make sure "System Standby:" and "System Hibernates:" under "Plugged in" is set to "Never"
3. If you use your notebook computer's LCD monitor, please do not close the lid. (Please ignore this step if you use an external monitor with your notebook lid closed.)
4. If your mouse does not respond after a period of inactivity, please wake it up by pressing one of the buttons on the mouse or moving the mouse around.



Synchronization

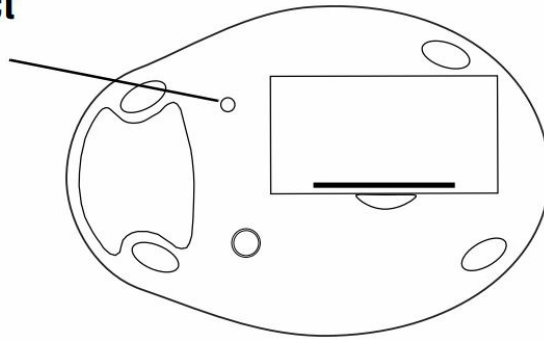
Make sure that your computer is turned on and has detected the USB receiver before you synchronize.

1. Press and release the connect button on the receiver.



2. Press and release the connect button located on the bottom of the mouse.

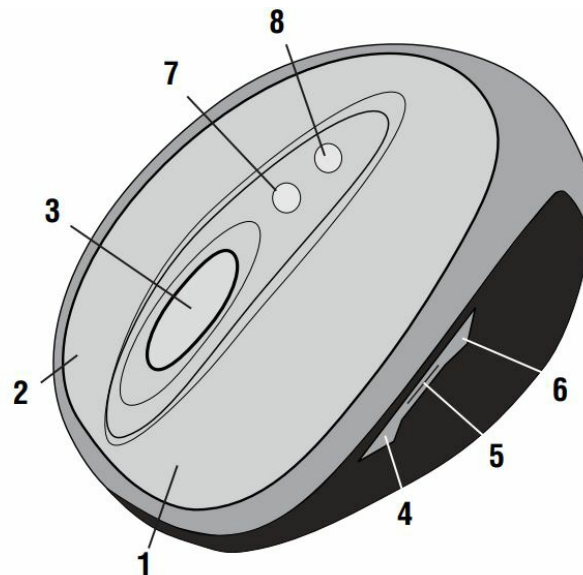
Connect button



The receiver's status light flashes while it scans the identification codes. When synchronized the status light stops flashing. This process must be completed within a few seconds or the steps will need to be repeated. After successfully synchronizing, you are ready to use the mouse.

NOTE: REMOVING THE BATTERIES WILL REQUIRE YOU TO SYNCHRONIZE THE MOUSE WITH THE RECEIVER AGAIN.

Using the Mouse



1. Left Mouse Button
2. Right Mouse Button
3. Middle Button/Scrolling
4. Internet Page Forward
5. Application Switch
6. Internet Page Backward
7. Scroll Up
8. Scroll Down

NOTES: THE 4TH THROUGH 8TH BUTTONS REQUIRE WINDOWS 2000 OR XP TO FUNCTION. DUE TO THE IMPROVED TRACKING SPEED OF THE LASER ENGINE, USERS MAY FIND THE CURSOR MOVEMENT IS FASTER THAN A CONVENTIONAL OPTICAL MOUSE. CURSOR SETTINGS CAN BE CHANGED FROM THE CONTROL PANEL IN WINDOWS.

Safety Measures

- Although this mouse is a Class 1 Laser Product and safe for operation, avoid pointing the laser into the eyes or looking directly into the laser emitter.
- Keep the mouse away from young children.
- Any attempt to disassemble, adjust, or repair the mouse may result in exposure to laser light or other safety hazards.

Sleep Mode

The mouse's sleep mode feature activates after 8 minutes of non-operation. To wake the mouse, click the left, right or scroll mouse button.

Troubleshooting

What do I do if the mouse does not work?

- Make sure that the polarity of the batteries is correct. The positive (+) and negative (-) ends of each battery must match the positive (+) and negative (-) connections in the battery housing.
- Make sure that the batteries are fully charged. Check your computer's suspend mode settings, as the mouse will not charge while the computer is in suspend mode.
- Check that the receiver's USB connector is firmly attached to the USB port on your computer or the extension seat, or that the extension seat's cable is connected to your PC.
- Make sure you have established a wireless link between the mouse and its receiver.

I do not see the laser light when the mouse is active.

- Unlike traditional optical mice, the light is not visible when the laser mouse is active.
- To make sure the mouse is on and functioning properly, move the mouse back and forth and check to see if the cursor responds.

My mouse does not work on a mirror or glass surface.

- Though rated for most of these kinds of surfaces, occasionally there will be one such surface that will cause the mouse to work improperly or not at all.
- If you are using the mouse on a reflective or mirrored surface, move it to another surface.

What do I do if the response time of the mouse is slow or the mouse intermittently stops working?

- Increase the distance between the mouse's receiver and the rest of your computer equipment. Use the USB extension seat if necessary.
- Increase the distance between the mouse's receiver and the base units of other wireless devices.
- Turn off any wireless devices and their base units that are near the mouse's receiver.
- Metals, such as iron, aluminum or copper may slow down the mouse's response time or cause the mouse to fail temporarily.
- If you are using the mouse on a metal surface, move it and the receiver to a non-metal surface.

Technical Support

For technical questions, please visit:

- US Internet: www.targus.com/support.asp
- Australia Internet: www.targus.com.au
- Email: infoaust@targus.com
- Telephone: 1800-641-645

Product Registration

Targus recommends that you register your Targus accessory shortly after purchasing it. Go to: <http://www.targus.com/registration.asp>. You will need to provide your full name, email address, phone number, and company information (if applicable).

Warranty

Targus warrants this product to be free from defects in materials and workmanship for one year. If your Targus accessory is found to be defective within that time, we will promptly repair or replace it. This warranty does not cover accidental damage, wear and tear, or consequential or incidental loss. Under no conditions is Targus liable for loss of, or damage to a devices nor loss of, or damage to, programs, records, or data; nor any consequential or incidental damages, even if Targus has been informed of their possibility. This warranty does not affect your statutory rights.

Regulatory Compliance

This device complies with Part 15 of the FCC Rules. Operation is subject to the following two conditions: (1) This device may not cause harmful interference, and (2) This device must accept any interference received, including interference that may cause undesired operation.

FCC Statement Tested to Comply

This equipment has been tested and found to comply with the limits of a Class B digital device, pursuant to Part 15 of the FCC Rules. These limits are designed to provide reasonable protection against harmful interference in a residential installation. This equipment generates, uses, and can radiate radio frequency energy and if not installed and used in accordance with the instructions, may cause harmful interference to radio communications. However, there is no guarantee that interference will not occur in a particular installation. If this equipment does cause harmful interference to radio or television reception, which can be determined by turning the equipment off and on, the user is encouraged to try to correct the interference by one or more of the following measures:

- Reorient or relocate the receiving antenna;
- Increase the separation between the equipment and receiver;
- Connect the equipment into an outlet on a circuit different from that to which the receiver is connected;
- Consult the dealer or an experienced radio/TV technician for help.

Changes or modifications not authorized by the party responsible for compliance could void the user's authority to operate this product.

Declaration of Conformity

Hereby, Targus, declares that this device is in compliance with the essential requirements and other relevant

provisions of Directive 1999/5/EC.

Trademarks

Microsoft, Windows, and Windows Vista are either registered trademarks or trademarks of Microsoft Corporation in the United States and/or other countries. All trademarks and registered trademarks are the properties of their respective owners. All rights reserved. Features and specifications subject to change without notice. © 2006, Targus Group International, Inc. and Targus, Inc., Anaheim, CA 92806 USA.

Visit our Website at www.targus.com Features and specifications subject to change without notice. © 2006 Targus Group International, Inc. and Targus, Inc.

FAQ's

What is the Targus AMW14EU 8-button Wireless Laser Mouse?

The Targus AMW14EU is an advanced wireless laser mouse featuring eight buttons designed for precise and efficient navigation.

Is this mouse compatible with both Windows and Mac computers?

Yes, the Targus AMW14EU mouse is often compatible with both Windows and Mac operating systems, offering versatility.

What type of wireless connectivity does it use?

This mouse typically uses a wireless USB receiver for connectivity, providing a reliable and convenient wireless experience.

How does the laser sensor technology benefit users?

The laser sensor technology in this mouse offers high precision and accuracy, making it suitable for various tasks, including gaming and graphic design.

What is the battery life of this wireless mouse?

The battery life may vary, but it is often designed to last for an extended period on a single set of batteries, reducing the need for frequent replacements.

Is there a specific software or driver required for this mouse?

Some versions of this mouse may come with software or drivers for advanced customization, while others may work plug-and-play without the need for additional software.

How many customizable buttons are there on this mouse?

The Targus AMW14EU mouse often features eight buttons that can be customized to suit your preferences and workflow.

Is it suitable for gaming?

Yes, this mouse's precision and customizable buttons make it suitable for gaming, especially for genres that require multiple input commands.

What is the wireless range of this mouse?

The wireless range typically extends up to a few meters, providing freedom of movement and flexibility in usage.

Is it ergonomically designed for comfortable use?

Yes, this mouse is often designed with ergonomics in mind, providing comfort during prolonged use.

Can this mouse be used for both work and leisure activities?

Yes, the versatile features of this mouse make it suitable for both work-related tasks and leisure activities like gaming or multimedia consumption.

What is the warranty period for this mouse?

The warranty period may vary depending on the manufacturer and retailer, so it's advisable to check the product specifications and warranty details before purchase.

References: [Targus AMW14EU 8-button Wireless Laser Mouse – Device.report](#)