



Targus KM615 WIRELESS MOUSE & KEYBOARD COMBO User Guide

[Home](#) » [Targus](#) » Targus KM615 WIRELESS MOUSE & KEYBOARD COMBO User Guide 

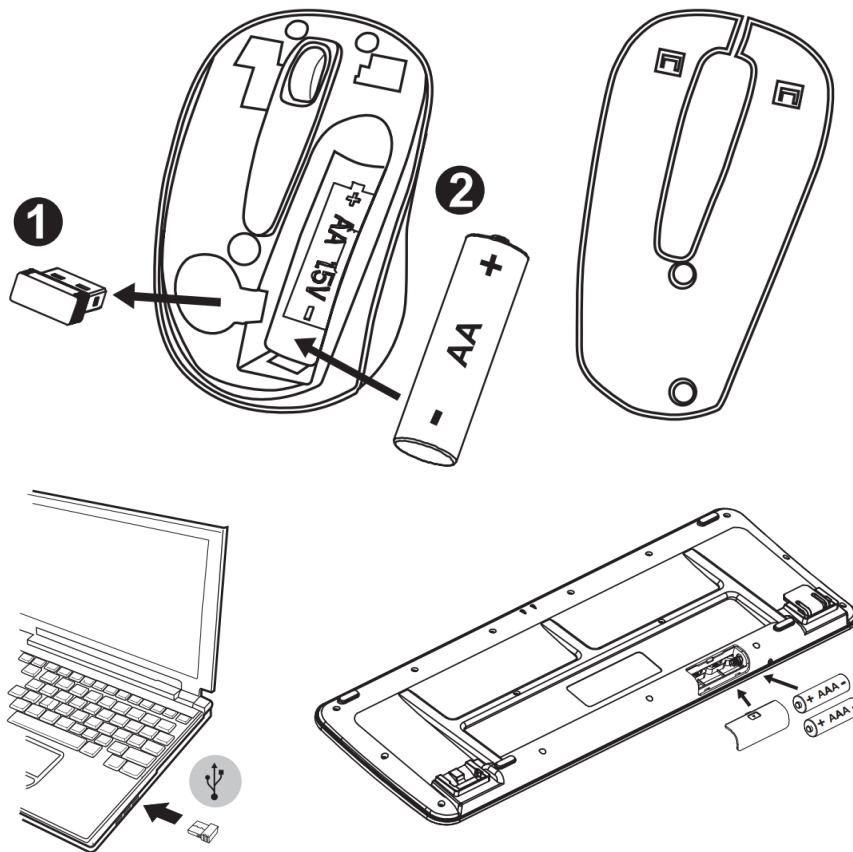
Targus KM615 WIRELESS MOUSE & KEYBOARD COMBO User Guide



Contents

- [1 Installing the battery](#)
- [2 Contents](#)
- [3 System requirements](#)
- [4 Help with setup: keyboard and mouse are not working](#)
- [5 Technical Support](#)
- [6 Product Registration](#)
- [7 One Year Limited Warranty](#)
- [8 Federal Communication Commission](#)
 - [8.1 Industry Canada statement](#)
 - [8.2 Declaration of Conformity](#)
- [9 Documents / Resources](#)
 - [9.1 References](#)
- [10 Related Posts](#)

Installing the battery



“ON/OFF” switch

User may turn off the wireless mouse by using the “ON/OFF” switch to save battery power.

Wake-up

The wireless mouse will enter Sleep Mode if no usage is detected. The mouse will be awakened when keypress is detected. If the wireless mouse is in Sleep Mode for over 10 minutes or your computer has been restarted, you have to click the mouse in order to wake it up.

Low-voltage alarming function

When the battery has been used for a long time and the battery power is low, the indicator light on the top right corner of the keyboard will flicker to remind the user to change the battery.

Contents

Keyboard

- 2.4 GHZ wireless
- Full size qwerty keyboard
- Tilt legs
- Requires 2 AAA battery (not included)

Mouse

- 2.4GHZ wireless

- Stow-n-Go® USB receiver
- 3 buttons
- Scroll wheel
- Requires 1 AA battery (not included)


System requirements

- Microsoft Windows 10


Wireless Keyboard (AKB651)

Operation Frequency	2.408GHz-2.474GHz
Rating	3V  100mA
Operation Temperature	0°C 40°C
Operation Humidity	10% 85% RH

Wireless Mouse (AMW842)

Operation Frequency	2.408GHz-2.474GHz
Working Voltage	1.5V  100mA
Operation Temperature	0°C 40°C
Operation Humidity	10% 85% RH

Wireless Receiver (AKM615R)

Operation Frequency	2.408GHz-2.474GHz
Working Voltage	5V  100mA
Operation Temperature	0°C 40°C
Operation Humidity	10% 85% RH

Help with setup: keyboard and mouse are not working

- Check the orientation of the batteries inside the keyboard and mouse, or replace the batteries.
- Is the USB receiver securely plugged into a computer USB port? Try moving the USB receiver to a USB A port closer to the keyboard and mouse.
- If the USB receiver is plugged into a USB hub, try plugging it directly into your computer.
- Remove any metal object between the receiver and the keyboard/mouse that may interfere with reception. Try using the mouse on a different surface.
- Restart the computer

Technical Support

For technical questions, please visit:

US Internet: <http://targus.com/us/support>

Canada Internet: <http://www.targus.com/ca/support>

Australia Internet: <http://www.targus.com/au/support>

Email: infoaust@targus.com

Telephone: 1800-641-645

New Zealand Telephone: 0800-633-222

Latin America Email: soporte@targus.com

Product Registration

Targus recommends that you register your Targus accessory shortly after purchasing it. Go to:

http://targus.com/us/product_registration

You will need to provide your full name, email address, country of residence and product information.

One Year Limited Warranty

We pride ourselves on the quality of our products. For complete warranty details and a list of our worldwide offices, please visit www.targus.com.

Targus product warranty does not cover any device or product that is not manufactured by Targus (including, but not limited to, laptops, smartphones, devices, or any other product that may be used in connection with the Targus product). Targus is a registered trademark of Targus International LLC in the US and in certain other countries. Windows are registered trademarks or trademarks of Microsoft Corporation in the United States and/or other countries. All logos and registered trademarks are the property of their respective owners. ©2020 Targus, 1211 North Miller

Street, Anaheim, CA 92806. All rights reserved.

ONE YEAR LIMITED WARRANTY: We pride ourselves on the quality of our products. For complete warranty details and a list of our worldwide offices, please visit www.targus.com.

Targus product warranty does not cover any device or product that is not manufactured by Targus (including, but not limited to, laptops, smartphones, devices, or any other product that may be used in connection with the Targus product). Targus is a registered trademark of Targus International LLC in the US and in certain other countries. Windows are registered trademarks or trademarks of Microsoft Corporation in the United States and/or other countries. All logos and registered trademarks are the property of their respective owners. ©2020 Targus, 1211 North Miller Street, Anaheim, CA 92806. All rights reserved.

Federal Communication Commission

Tested to Comply

This device complies with part 15 of the FCC Rules. Operation is subject to the following two conditions:

1. This device may not cause harmful interference, and
2. This device must accept any interference received, including interference that may cause undesired operation.

This equipment has been tested and found to comply with the limits for a Class B digital device, pursuant to part 15 of the FCC Rules. These limits are designed to provide reasonable protection against harmful interference in a residential installation. This equipment generates, uses and can radiate radio frequency energy and, if not installed and used in accordance with the instructions, may cause harmful interference to radio communications. However, there is no guarantee that interference will not occur in a particular installation. If this equipment does cause harmful interference to radio or television reception, which can be determined by turning the equipment off and on, the user is encouraged to try to correct the interference by one or more of the following measures:

- Reorient or relocate the receiving antenna.
- Increase the separation between the equipment and receiver.
- Connect the equipment into an outlet on a circuit different from that to which the receiver is connected.
- Consult the dealer or an experienced radio/TV technician for help.

MODIFICATION: Any changes or modifications not expressly approved by the grantee of this device could void the user's authority to operate the device.

Industry Canada statement

This device complies with Industry Canada RSS standard(s). Operation is subject to the following two conditions: (1) this device may not cause interference, and (2) this device must accept any interference, including interference that may cause undesired operation of the device.

Changes or modifications not expressly approved by the party responsible for compliance could void the user's authority to operate the equipment.

Declaration of Conformity

Hereby, Targus declares that this device is in compliance with the essential requirements and other relevant provisions of Directive 2014/53/EU.



Supplier's Declaration of Conformity



Manufacturer/ Responsible Party : Targus International LLC
Address : 1211 North Miller Street,
Anaheim, CA 92806 USA
Tel: 1-714-765-5555
Fax: 1-714-765-5599
Internet: www.targus.com

Hereby declares that the Product

Trade name: **Targus**

Product name: Wireless Keyboard, Wireless Mouse and Wireless receiver

Model number(Reg#): AKB651(Wireless Keyboard)
AMW842(Wireless Mouse)
AKM615R(Wireless receiver)

Conforms to the following specifications

FCC CFR Title 47 Part 15 Subpart B and ANSI C63.4-2014 standard limits

The test data & results are referred to the test report Number: 68.760.20.0229.01

Supplementary Information:

This device complies with part 15 of the FCC Rules. Operation is subject to the following two conditions: (1) This device may not cause harmful interference, and (2) this device must accept any interference received, including interference that may cause undesired operation.

Director, Targus International LLC
Function Title

Ngoh, CF
Name

6/11/2020
Date


Signed for and on behalf of Targus

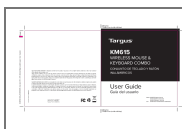
Keyboard FCC ID: OXM000111

Mouse FCC ID: OXM000112

Receiver FCC ID: OXM000113



Documents / Resources



[Targus KM615 WIRELESS MOUSE & KEYBOARD COMBO](#) [pdf] User Guide
000113, OXM000113, 000111, OXM000111, 000112, OXM000112, KM615, WIRELESS MOUS
E, WIRELESS KEYBOARD COMBO

References

- [!\[\]\(6841ca9b0e023296428e7c9e683b9367_img.jpg\) Product Registration | Targus](#)
- [!\[\]\(e258e347e7683f87061f627f84598eb5_img.jpg\) Customer Support | Targus](#)
- [!\[\]\(1233990ad3f0b7475c568d7bf16af31f_img.jpg\) Targus | Backpacks, Docking Stations & Computer Accessories](#)
- [!\[\]\(18570b67a4686b081406cd3de636c1c3_img.jpg\) Customer Support – Targus Australia](#)
- [!\[\]\(411af059a517db12f1097bc63c4fbe36_img.jpg\) Customer Support | Targus – Targus CA](#)