

Targus®
Targus KM610
Wireless Mouse
and Keyboard
Combo



Targus KM610 Wireless Mouse and Keyboard Combo User Guide

[Home](#) » [Targus](#) » Targus KM610 Wireless Mouse and Keyboard Combo User Guide 

Contents

- 1 Targus KM610 Wireless Mouse and Keyboard Combo
- 2 Product Information
- 3 Product Usage Instructions
- 4 Installing the battery
- 5 Technical Support
- 6 Product Registration
- 7 Australian And New Zealand Consumers Only
- 8 Federal Communication Commission Tested to Comply
- 9 Declaration of Conformity
- 10 Documents / Resources
 - 10.1 References
- 11 Related Posts



Targus KM610 Wireless Mouse and Keyboard Combo



Product Information

Specifications

- Model: KM610
- Product Type: Wireless Mouse & Keyboard Combo
- Wireless Keyboard Model: AKB614J
- Wireless Mouse Model: AMW610J
- Wireless Receiver Model: AKM610JR
- Material: 80gsm woodfree paper
- Color: Grayscale
- Operation Frequency:
 - Wireless Keyboard: 2402 MHz ~ 2480 MHz
 - Wireless Mouse: 2402 MHz ~ 2480 MHz
 - Wireless Receiver: 2402 MHz ~ 2480 MHz
- Working Voltage: 1.5V (Keyboard & Mouse), 5V (Receiver)
- Operation Temperature: 0°C – 40°C
- Operation Humidity: 10% – 85% RH
- Maximum EIPR Power(dBm): Keyboard (-3.1), Mouse (-3.0), Receiver (0.0)
- Working Distance: 10 Meters

Product Usage Instructions

Installing the battery

1. Open the battery compartment on the mouse or keyboard.
2. Insert the battery according to the polarity markings.
3. Close the battery compartment securely.

ON/OFF Switch & Wake-up Function

The wireless mouse will enter Sleep Mode if no usage is detected. To wake it up, simply press any key on the keyboard or click the mouse. If the mouse remains in Sleep Mode for over 10 minutes, a click is required to awaken it.

Low-voltage Alarming Function:

An indicator will alert you when the battery power is low after prolonged use.

Frequently Asked Questions (FAQ)

• Help with setup: keyboard and mouse are not working

If your keyboard and mouse are not working, please contact technical support for assistance.

• Product Registration

Targus recommends registering your product after purchase. Visit the provided link and provide the necessary details for registration.

• Technical Support:

For technical questions or support, visit the respective websites or contact the provided telephone numbers and email addresses based on your location.

KM610

WIRELESS MOUSE & KEYBOARD COMBO

User Guide

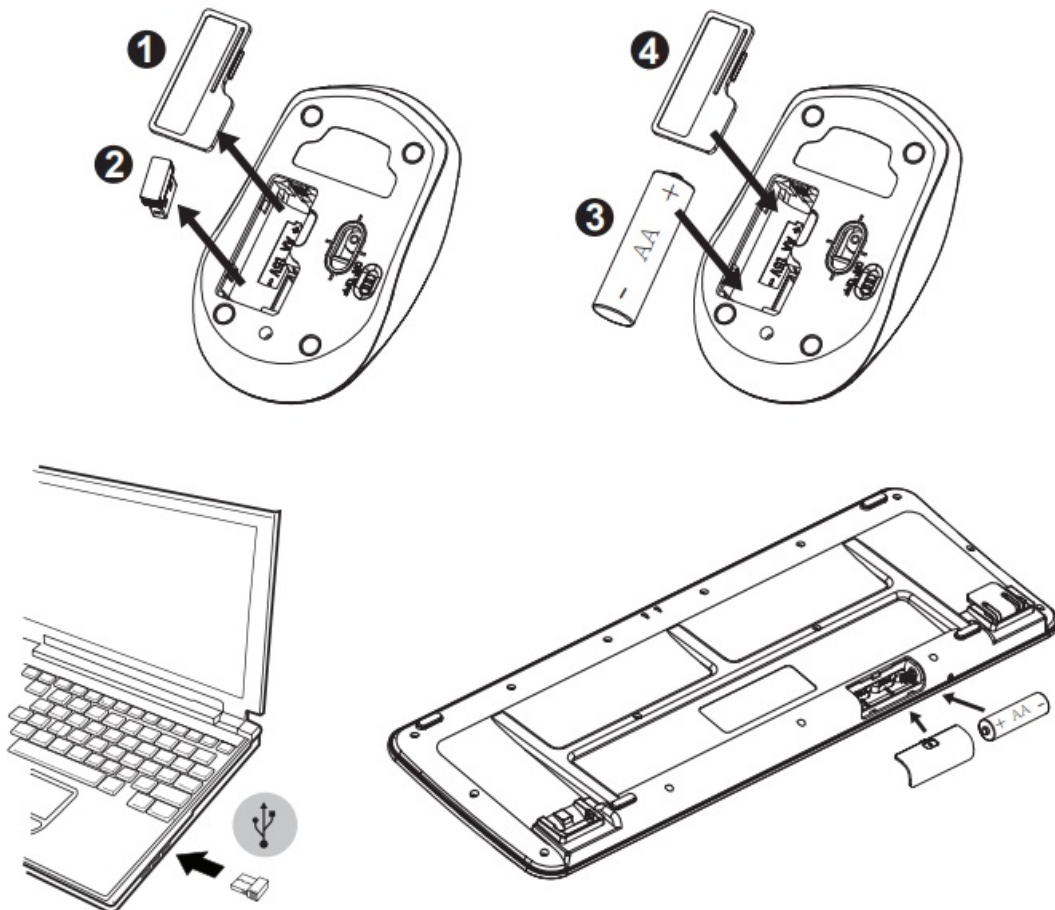
Manuel de l'utilisateur

Model: AMW610J (Wireless Mouse)

AKB614J (Wireless Keyboard) **AKM610JR** (Wireless Receiver)

SKU: AKM610BT

Installing the battery



“ON/OFF” switch

Wake-up

The wireless mouse will enter Sleep Mode if no usage is detected. The mouse will be awakened when keypress is detected. If the wireless mouse is in Sleep Mode for over 10 minutes or your computer has been restarted, you have to click the mouse in order to wake it up.

Low-voltage alarming function

When the battery has been used for a long time and the battery power is low, the indicator battery.

Contents

- Wireless Optical Mouse
- Wireless Keyboard
- USB nano receiver
- AA alkaline battery x 2

- User manual

System requirements

- Windows® 10, Windows® 8.1, Windows® 8, Windows® 7
- Mac OS® X 10.12.4 – 10.14.1

Wireless Keyboard (AKB614J) for EU

Operation Frequency	2402 MHz ~2480 MHz
Rating	1.5V ⁻⁻⁻ 100mA
Operation Temperature	0°C 40°C
Operation Humidity	10% 85% RH
Maximum EIPR Power(dBm)	0.0
Working distance (Meter)	10

Wireless Mouse (AMW610J) for EU

Operation Frequency	2402 MHz ~2480 MHz
Working Voltage	1.5V ⁻⁻⁻ 100mA
Operation Temperature	0°C 40°C
Operation Humidity	10% 85% RH
Maximum EIPR Power(dBm)	-3.1
Working distance (Meter)	10

Wireless Receiver (AKM610JR) for EU

Operation Frequency	2402 MHz ~2480 MHz
Working Voltage	5V ⁻⁻⁻ 100mA
Operation Temperature	0°C 40°C
Operation Humidity	10% 85% RH
Maximum EIPR Power(dBm)	-3.0
Working distance (Meter)	10

Help with setup: keyboard and mouse are not working

- Check the orientation of the batteries inside the keyboard and mouse, or replace the batteries.
- Is the USB receiver securely plugged into a computer USB port? Try moving the USB receiver to a USB port

closer to the keyboard and mouse.

- If the USB receiver is plugged into a USB hub, try plugging it directly into your computer.
- Remove any metal object between the receiver and the keyboard/mouse that may interfere with reception. Try using the mouse on a different surface
- Restart the computer.

Technical Support

For technical questions, please visit:

- **US** Internet: <http://targus.com/us/support>
- **Canada** Internet: <http://www.targus.com/ca/support>
- **Australia** Internet: <http://www.targus.com/au/support>
- **Email:** infoaust@targus.com
- **Telephone:** 1800-641-645
- **New Zealand Telephone:** 0800-633-222
- **Latin America Email:** soporte@targus.com

Product Registration

Targus recommends that you register your Targus accessory shortly after purchasing it. Go to:

http://targus.com/us/product_registration

You will need to provide your full name, email address, country of residence and product information.

2 YEAR LIMITED WARRANTY

OR AS REQUIRED BY LOCAL LAWS

We pride ourselves on the quality of our products. For complete warranty details and a list of our worldwide offices.. please visit www.targus.com. Targus product warranty does not cover any device or product that is not manufactured by Targus (including, but not limited to, laptops, smartphones, devices, or any other product that may be used in connection with the Targus product).

Targus is a registered trademark of Targus International LLC in the US and in certain other countries. Windows is a registered trademark of Microsoft Corporation in the United States and/or other countries. macOS is a trademark of Apple Inc., registered in the U.S. and other countries. All logos and registered trademarks are the property of their respective owners. ©2024 Targus, 1211 North Miller Street, Anaheim, CA 92806. All rights reserved.

Australian And New Zealand Consumers Only

Thank you for your purchase. Targus warrants to the original purchaser that its products are free from defects in materials and workmanship and, during the specified warranty period, lasts as long as the original purchaser owns the product. The warranty period is stated on the packaging or in documentation provided with this Targus product. Targus' Limited Product Warranty excludes damage caused by accident, neglect, abuse, misuse, improper care, normal wear and tear, ownership transfer, or alteration. The limited warranty also excludes any product that is not manufactured by Targus (including, without limitation, laptops, smartphones, devices, tablets, or any other non-Targus item) that is used in connection with the Targus product.

In the event that the Targus product has a defect in materials or workmanship Targus will, after receiving a warranty claim and inspecting the product, at its discretion, do one of the following: repair, replace, or refund with the same or a similar product (or part) of no lesser quality and ship it to the original purchaser at Targus' expense. As part of this inspection, proof of purchase will be required. There is no charge for inspection. To make a warranty claim, please contact Targus Australia or New Zealand (see details below), or return the product to the place of purchase. The original purchaser must bear the cost of the delivery to Targus.

Under Australian and/or New Zealand Consumer Laws, in addition to any warranty Targus gives, our products

come with guarantees that cannot be excluded. You are entitled to a replacement or refund for a major failure and compensation for any other reasonably foreseeable loss or damage. You are entitled to have the products repaired or replaced if they fail to be of acceptable quality and the failure does not amount to a major failure. For any warranty question, contact Targus Australia Pty. Ltd. (i) by mail at Suite 2, Level 8, 5 Rider Boulevard, Rhodes NSW 2138, by phone AUS 1800 641 645 or NZ 0800 633 222 or by Email: infoaust@targus.com . For additional information, check out our website at targus.com/au/warranty.

Federal Communication Commission Tested to Comply

This device complies with part 15 of the FCC Rules. Operation is subject to the following two conditions:

1. This device may not cause harmful interference, and
2. This device must accept any interference received, including interference that may cause undesired operation.

This equipment has been tested and found to comply with the limits for a Class B digital device, pursuant to part 15 of the FCC Rules. These limits are designed to provide reasonable protection against harmful interference in a residential installation. This equipment generates, uses and can radiate radio frequency energy and, if not installed and used in accordance with the instructions, may cause harmful interference to radio communications. However, there is no guarantee that interference will not occur in a particular installation. If this equipment does cause harmful

and on, the user is encouraged to try to correct the interference by one or more of the following measures:

- Reorient or relocate the receiving antenna
- Increase the separation between the equipment and receiver.
- Connect the equipment into an outlet on a circuit different from that to which the receiver is connected.
- Consult the dealer or an experienced radio/TV technician for help.

MODIFICATION: Any changes or modifications not expressly approved by the grantee of this device could void the user's authority to operate the device.

Industry Canada statement

This device contains licence-exempt transmitter(s)/receiver(s) that comply with Innovation, Science and Economic Development Canada's licence-exempt RSS(s). Operation is subject to the following two conditions:

1. This device may not cause interference.
2. This device must accept any interference, including interference that may cause undesired operation of the device.

Declaration of Conformity

Hereby, Targus declares that this device is in compliance with the essential requirements and other relevant provisions of Radio Equipment Directive 2014/53/EU.



Supplier's Declaration of Conformity



Manufacturer/ Responsible Party : Targus International LLC
Address : 1211 North Miller Street,
Anaheim, CA 92806 USA
Tel: 1-714-765-5555
Fax: 1-714-765-5599
Internet: www.targus.com

Hereby declares that the Product

Trade name: **Targus**

Product name: Wireless Keyboard (Model: AKB614J), Wireless Mouse (Model: AMW610J),
Wireless Receiver (Model: AKM610JR)

Model number(Reg#): AKB614J, AMW610J, AKM610JR

Conforms to the following specifications

FCC CFR Title 47 Part 15 Subpart B and ANSI C63.4-2014 standard limits

The test data & results are referred to the test report Number: 240411036SZN-003

Supplementary Information:

This device complies with part 15 of the FCC Rules. Operation is subject to the following two conditions: (1) This device may not cause harmful interference, and (2) this device must accept any interference received, including interference that may cause undesired operation.

Director, Targus International LLC
Function Title

CF Ngoh
Name

06-11-2024
Date


Signed for and on behalf of Targus

2 YEARS LIMITED WARRANTY OR AS REQUIRED BY LOCAL LAWS

We pride ourselves on the quality of our products. For complete warranty details and a list of our worldwide offices, please visit www.targus.com. Targus product warranty does not cover any device or product that is not manufactured by Targus (including, but not limited to, laptops, smartphones, devices, or any other product that may be used in connection with the Targus product).

Targus is a registered trademark of Targus International, LLC in the U.S. and in certain other countries. Windows is a registered trademark of Microsoft Corporation in the United States and/or other countries. macOS is a trademark of Apple Inc., registered in the U.S. and other countries. All logos and registered trademarks are the property of their respective owners. ©2024 Targus, 1211 North Miller Street, Anaheim, CA 92806. All rights reserved.

Australian and New Zealand customers, please see inside of the packaging for warranty details.

For information on recycling in the United States, please visit <https://us.targus.com/pages/recycling-program>

•



Keyboard IC : 27357-00020

- **Mouse IC : 27357-00021**
- **Receiver IC : 27357-00022**
- **Keyboard FCC ID : OXM000151**
- **Mouse FCC ID : OXM000152**
- **Receiver FCC ID : OXM000153**

CAN ICES-003 (B) / NMB-003 (B)



Documents / Resources



[Targus KM610 Wireless Mouse and Keyboard Combo](#) [pdf] User Guide

AMW610J, AKB614J, AKM610JR, KM610 Wireless Mouse and Keyboard Combo, KM610, Wireless Mouse and Keyboard Combo, Mouse and Keyboard Combo, Keyboard Combo

References

- [T Warranty | Targus – Targus Australia](#)
- [T Product Registration | Targus](#)
- [T Customer Support | Targus](#)
- [T Targus | Backpacks, Docking Stations & Computer Accessories](#)
- [T Customer Support – Targus Australia](#)
- [T Customer Support | Targus – Targus CA](#)
- [T Recycling Program](#)
- [User Manual](#)

[Manuals+](#), [Privacy Policy](#)

This website is an independent publication and is neither affiliated with nor endorsed by any of the trademark owners. The "Bluetooth®" word mark and logos are registered trademarks owned by Bluetooth SIG, Inc. The "Wi-Fi®" word mark and logos are registered trademarks owned by the Wi-Fi Alliance. Any use of these marks on this website does not imply any affiliation with or endorsement.