



Targus AMP067 Control Plus Presenter Remote User Guide

[Home](#) » [Targus](#) » Targus AMP067 Control Plus Presenter Remote User Guide 

Targus[®]

CONTROL PLUS PRESENTER REMOTE User Guide

Model: AMP067
(Product Name: Wireless Presenter AMP067R)
(Product Name : Wireless Receiver)
SKU : AMP06704AMGL

Contents

- [1 Introduction](#)
- [2 Contents](#)
- [3 System Requirements](#)
- [4 Installing the Battery](#)
- [5 Establishing connection by 2.4G mode](#)
- [6 Establishing connection by Bluetooth](#)
- [7 Power Saving Mode](#)
- [8 Reconnecting the laptop/computer device](#)
- [9 Troubleshooting \(Bluetooth connection\)](#)
- [10 Keys and Functions](#)
- [11 Safety Measures](#)
- [12 Troubleshooting](#)
- [13 Product Specification](#)
- [14 Documents / Resources](#)
- [15 Related Posts](#)

Introduction

Thank you for your purchase of the Targus Control Plus Presenter Remote. It offers true plug-and-play capability with no need for software drivers and the 2.4 GHz technology allows for effective presentations at up to 66'/20m.

Contents

- Control Plus Presenter Remote
- USB-A Stowable Dongle
- 1 x AAA battery
- User Guide

System Requirements

Hardware

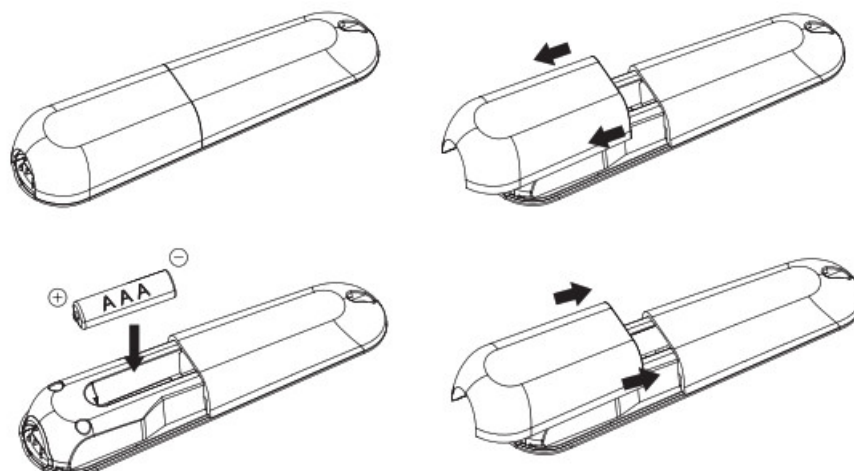
- USB-A interface
- Operating System
- Windows® 10
- macOS®
- iOS®
- Android™

“App/Programme functionality may vary, please check with your software provider”

Installing the Battery

Insert the supplied battery, making sure the positive (+) and negative (-) ends of the battery match the polarity indicators inside the battery compartment.

The White LED will light for 3 seconds after correct battery installation.

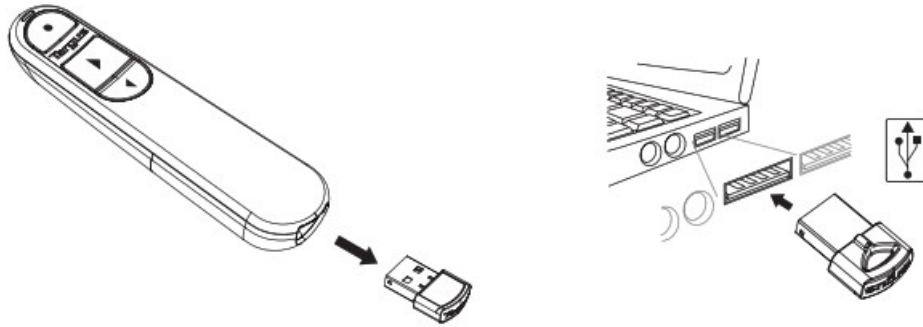


CAUTION: Risk of explosion if the battery is replaced by an incorrect type.

Establishing connection by 2.4G mode

1. Plug the USB-A receiver into any USB-A port on your laptop.

2. The presenter will connect the laptop automatically, please follow connect with the laptop if 2.4G mode is not working.
3. Depress “Laser Button and Forward Button” for 3 seconds. The White LED will flash during pairing.



Establishing connection by Bluetooth

1. Enable the Bluetooth setting on your laptop/computer device.
2. Depress “Laser Button + Backward Button” for 3 seconds. The White LED will flash for 3 mins during pairing.
3. While the White LED is flashing, go to your laptop/computer Bluetooth setting and select the “Targus P067” Bluetooth device name.
4. The Bluetooth presenter is now connected to your laptop/computer and the White LED turns off.
5. If the pairing process takes longer than 3 minutes and the White LED turns off, reinstall battery and follow step 2.

Power Saving Mode

In order to conserve power and increase battery lifetime, the presenter will enter power saving mode automatically after 5 minutes while the presenter is motionless. Click on any button to resume normal operation, the presenter may take a few seconds to reconnect with your laptop/computer.

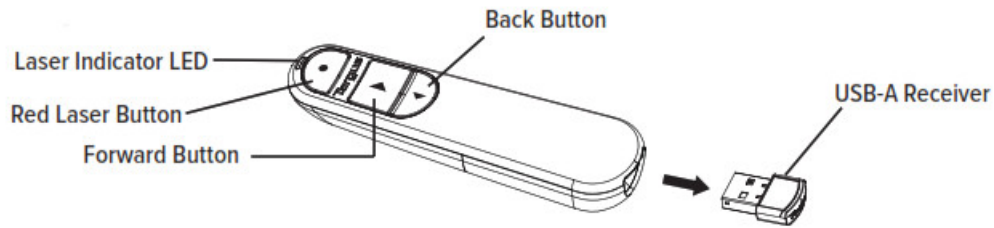
Reconnecting the laptop/computer device

The presenter will automatically attempt to reconnect to the most recent device whenever 2.4G mode or Bluetooth mode when power on or awaken.

Troubleshooting (Bluetooth connection)

- Make sure your presenter power is on.
- Make sure your laptop/computer device Bluetooth is working properly.
- Power indicator light flashing red indicates low battery.
- If your laptop/computer is connected to other Bluetooth devices, you may need to disconnect some devices before you can connect the presenter.
- If the presenter is still not connecting to your laptop/computer device and you see several “Targus P067” on the Bluetooth device list, you may need to remove all “Targus P067”, then hold the combo button “Laser Button + Backward Button” for 3 seconds to make a new device Bluetooth pairing connection.
- If the presenter is still not recognized, make sure the correct version of the software is installed. Verify the Windows and Mac OS versions for compatibility.

Keys and Functions



	Single Button / Combo Button	Operation	Function Description
1	Laser Button	Long press button	Show red laser point
2	Forward Button	1. Short press	Forward page
3		2. Long press 1 second	Play PTT
4		3. Long press 1 second again	End PTT
5	Back Button	1. Short press	Backward page
6		2. Long press 1 second	Black screen
7		3. Long press 1 second again	Resume screen
8	Laser Button + Forward Button	Long press Laser Button + Forward Button 3 seconds	2.4G wireless mode pairing or re-pairing
9	Laser Button + Backward	Long press Laser Button + Backward Button 3 seconds	Bluetooth wireless mode pairing or re-pairing

Safety Measures

- Keep the presenter away from young children.
- Any attempt to disassemble, adjust or repair the presenter may result in exposure to the safety hazards.


Troubleshooting

What do I do if the response time of the presenter is slow or it intermittently stops working?

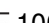
- Make sure that the presenter is within 66 feet (20 m) of its receiver.
- Increase the distance between the presenter's receiver and the base units of other wireless devices.
- Turn off any wireless devices and their base units that are near the presenter's receiver.
- Replace the battery.

Product Specification

Wireless Presenter (AMP067)

2.4G Frequency Range	2402MHz-2480MHz
Bluetooth Frequency Range	2402MHz-2480MHz
Battery Type	AAA battery
Effective 2.4G RF Communication Range	20 meters max.
Effective Bluetooth Communication Range	10 meters max.
2.4G Maximum EIRP Power (dBm) (EU)	-6.2dBm
Bluetooth Maximum EIRP Power(dBm) (EU)	-6.0dBm
Rating	1.5V  100mA

Wireless Receiver (AMP067R)

2.4G Frequency Range	2402MHz-2480MHz
Interface	USB 1.1 / 2.0
2.4G Maximum EIRP Power (dBm) (EU)	-12.7dBm
Rating	5V  100mA

Supplier's Declaration of Conformity



Manufacturer/ Targus International LLC

Tel: 1-714-765-5555

Responsible Party :

Address: 1211 North Miller Street, Anaheim, CA 92806 USA

Fax: 1-714-765-5599

Internet: www.targus.com

Hereby declares that the Product Trade name: Targus Product name: Wireless Presenter, Wireless Receiver Model number(Reg#): ANIP067 (Wireless Presenter), ANIP067R (Wireless Receiver) Conforms to the following specifications FCC CFR Title 47 Part 15 Subpart B and ANSI C63.4-2014 standard limits The test data & results are referred to the test report Number: 21031009SZN-003

Supplementary Information: This device complies with part 15 of the FCC Rules. Operation is subject to the following two conditions: (1) This device may not cause harmful interference, and (2) this device must accept any interference received, including interference that may cause undesired operation.

Director, Targus International LLC

Ngoh,CF

Function Title Name

Date: 6/1/2021

Signed for and on behalf of Targus



Declaration of Conformity

Manufacturer Address: Targus International LLC

Address: 1211 North Miller Street Anaheim, CA 92806 USA

Importer: Targus Europe Ltd.

Address: 5 New Square, Bedfont Lakes Business Park, Feltham, Middlesex, TW14 BHA, UK

Tel: 1-714765-5555

Fax: 1-714-765-5599

Internet: www.targus.com

Tel: +44 (0)20 8831 2013

We herewith confirm the following designated product Wireless Presenter, Wireless Receiver, Model No. AMP067(Wireless Presenter). AMP067R(Wireless Receiver) Brand name "TARGUS", complies with below UK legislation and relevant standards. For the evaluation regarding the below legislation, the following standards were applied: Radio Equipment Regulations 2017 ETSI EN 301 489-t V2.2.3 (2019-11)

MIEN 301489-t7 V3.24 (2020-09)

EMI EN 300 328 V2.12 (2019-07)

EN 55032: 2015+A11:2020

EN 55035: 2017+A11:2020

EN 62479:2010 BS

EN 60825-1:2014-A11:2021 BS

EN 62368-1:2014-1-A11 :2017

The Restriction of the Use of Certain Hazardous Substances in Electrical and Electronic Equipment Regulations 2012

EN IEC 63000:2018

This declaration of conformity is issued under the sole responsibility of the manufacturer.

Director, Targus – Global Sourcing Group

CF Ngoh

Function Title

Date /6/1 /2021 /

Hong Kong



Name:

Place of Issue Signed for and on behalf of Targus

Declaration of Conformity

Manufacturer: Targus International LLC

Address: 1211 North Miller Street, Anaheim, CA 92806 USA

Importer: Targus Europe Ltd.

Address: Targus EMEA Account Management Van Hilststraat 19, 5145 RK Waalwijk. NETHERLANDS

Tel: 1-714-765-5555

Fax: 1-714-765-5599

Internet: www.targus.com

Tel: +44 (0)20 8831 2013

We herewith confirm the following designated product Wireless Presenter Wireless Receiver Model No. AMP067(Wireless Presenter).AMP067R(WiNICSS Receiver). Brand name -TARGUS", complies with the Radio Equipment Directive 2014/53/EU, EU ROHS Directive 2011/65/EU and its amendment Directive(EU) 20150161.

For the evaluation regarding the above Directives, the following standards were applied: RED: 2014/53/EU ETS1

EN 301 489-I V2.2.3 (2019-11) ETS1

EN 301 489-17 V32.4 (2020-09) ETS1

EN 300 328 V22.2 (2019-07)

EN 55032: 2015+A1 1:2020

EN 55035: 2017+A11:2020

EN 62479 2010

EN 60825-1: 2014+A11:2021

EN 62368-1:2014+A11:2017

RoHS Directive: 2011/65/EU and its amendment Directive (EU) 2015)863

EN IEC 63000:2018 Year to begin CE marking: 2021

Director, Targus – Global Sourcing Group CF Ngoh
Function Title

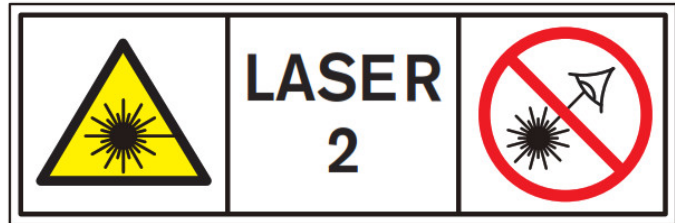
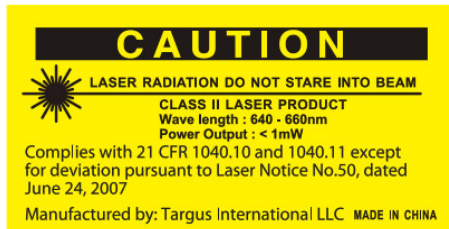


Name:

Date 6/1/2021 / Hong Kong

Place of Issue

Signed for and on behalf of Targus



AVOID EXPOSURE – HAZARDOUS ELECTROMAGNETIC RADIATION EMITTED FROM THIS APERTURE.
LASER RADIATION. DO NOT STARE INTO THE BEAM OR VIEW DIRECTLY WITH OPTICAL INSTRUMENTS.
CLASS 2 LASER PRODUCT.

NEVER POINT A LASER BEAM INTO A PERSON'S EYES OR VIEW A LASER BEAM DIRECTLY, AS PROLONGED

EXPOSURE CAN BE HAZARDOUS TO THE EYES. MOMENTARY EXPOSURE FROM A LASER POINTER, SUCH AS AN INADVERTENT SWEEP OF THE LIGHT ACROSS A PERSON'S EYES, MAY CAUSE TEMPORARY FLASH BLINDNESS SIMILAR TO THE EFFECT OF A CAMERA FLASHBULB. ALTHOUGH THIS CONDITION IS TEMPORARY, IT CAN BECOME MORE DANGEROUS IF THE EXPOSED PERSON IS ENGAGED IN A VISION-CRITICAL ACTIVITY SUCH AS DRIVING.

CAUTION: ANY CHANGES OR MODIFICATIONS NOT EXPRESSLY APPROVED BY THE PARTY RESPONSIBLE FOR COMPLIANCE COULD VOID THE USER'S AUTHORITY TO OPERATE THE EQUIPMENT. THIS DEVICE AND ITS ANTENNA(S) MUST NOT BE CO-LOCATED OR OPERATING IN CONJUNCTION WITH ANY OTHER ANTENNA OR TRANSMITTER. YOUR DEVICE CONTAINS A LOW-POWER TRANSMITTER. WHEN THE DEVICE IS TRANSMITTED IT SENDS OUT A RADIO FREQUENCY (RF) SIGNAL. NOTE: THE MANUFACTURER IS NOT RESPONSIBLE FOR ANY RADIO OR TV INTERFERENCE CAUSED BY UNAUTHORIZED MODIFICATIONS TO THIS EQUIPMENT. SUCH MODIFICATIONS COULD VOID THE USER'S AUTHORITY TO OPERATE THE EQUIPMENT.

RF warning statement

The device has been evaluated to meet general RF exposure requirements. The device can be used in portable exposure conditions without restriction.

Industry Canada Statement

This device contains license-exempt transmitter(s) / receiver(s) that comply with Innovation, Science and Economic Development Canada's license-exempt RSS(s). Operation is subject to the following two conditions:

1. This device may not cause interference.
2. This device must accept any interference, including interference that may cause undesired operation of the device.

FCC Statement

Tested to Comply

This device complies with Part 15 of the FCC Rules. Operation is subject to the following two conditions:

1. This device may not cause harmful interference, and
2. This device must accept any interference received, including interference that may cause undesired operation.

Warning: Changes or modifications not expressly approved by the party responsible for compliance could void

the user's authority to operate the equipment.

NOTE: This equipment has been tested and found to comply with the limits for a Class B digital device, pursuant to Part 15 of the FCC Rules. These limits are designed to provide reasonable protection against harmful interference in a residential installation.

This equipment generates uses and can radiate radio frequency energy and, if not installed and used in accordance with the instructions, may cause harmful interference to radio communications. However, there is no guarantee that interference will not occur in a particular installation. If this equipment does cause harmful interference to radio or television reception, which can be determined by turning the equipment off and on, the user is encouraged to try to correct the interference by one or more of the following measures:

- Reorient or relocate the receiving antenna.
- Increase the separation between the equipment and receiver.
- Connect the equipment into an outlet on a circuit different from that to which the receiver is connected.
- Consult the dealer or an experienced radio/TV technician for help.

Users can find the FCC ID number inside the battery box (user-accessible non-detachable compartment)

Declaration of Conformity

Hereby, Targus, declares that this device is in compliance with the essential requirements and other relevant provisions of Directive 2014/53/EU.

AP CUSTOMERS: 3 YEARS LIMITED WARRANTY

EMEA CUSTOMERS: 2 YEARS LIMITED WARRANTY

OTHER REGIONS: 1 YEAR LIMITED WARRANTY

We pride ourselves on the quality of our products. For complete warranty details and a list of our worldwide offices, please visit www.targus.com.

Targus product warranty does not cover any device or product that is not manufactured by Targus (including, but not limited to, laptops, smartphones, devices, or any other product that may be used in connection with the Targus product). Australian customers: For complete warranty details see the warranty statement enclosed.

Targus is a registered trademark of Targus International LLC in the U.S. and in certain other countries. Windows is a registered trademark or trademark of Microsoft Corporation in the United States and/or other countries. macOS is a trademark of Apple Inc., registered in the U.S. and other countries. iOS is a trademark or registered trademark of Cisco in the U.S. and other countries and used by Apple Inc. under license. Android is a trademark of Google LLC. Bluetooth is a registered trademark of Bluetooth SIG, Inc. All logos and registered trademarks are the property of their respective owners. ©2021 Targus, 1211 North Miller Street, Anaheim, CA 92806. All rights reserved.

Product Registration

Targus recommends that you register your Targus accessory shortly after purchasing it. Go to targus.com/us/product_registration

You will need to provide your full name, email address, country of residence, and product information.

Technical Support

For technical questions, please visit:

US targus.com/us/support 1.800.283.6325

CAN Internet: targus.com/ca/support

EMEA targus.com/uk/support +44 (0)20-7744-0330

Australia targus.com/au/support 1800.641.645 (NZ 0800.633.222)

Latin America soporte@targus.com

AUSTRALIAN AND NEW ZEALAND CONSUMERS ONLY

Thank you for your purchase. Targus warrants to the original purchaser that its products are free from defects in materials and workmanship, during the specified warranty period, and lasts as long as the original purchaser owns the product. The warranty period is stated on the packaging or in the documentation provided with this Targus product. Targus' Limited Product Warranty

excludes damage caused by accident, neglect, abuse, misuse, improper care, normal wear and tear, ownership transfer, or alteration. The limited warranty also excludes any product that is not manufactured by Targus (including, without limitation, laptops, smartphones, devices, tablets, or any other non-Targus item) that is used in connection with the Targus product.

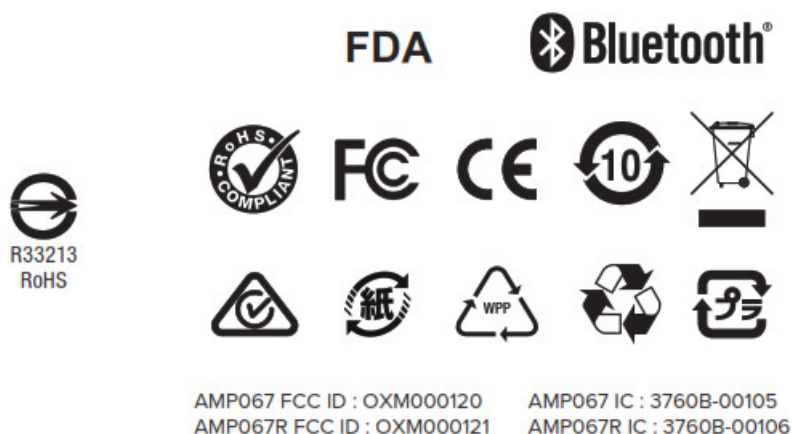
In the event that the Targus product has a defect in materials or workmanship Targus will, after receiving a warranty claim and inspecting the product, at its discretion, do one of the following: repair, replace, or refund with the same or a similar product (or part) of no lesser quality and ship it to the original purchaser at Targus' expense. As part of this inspection, proof of purchase will

be required. There is no charge for inspection. To make a warranty claim, please contact Targus Australia or New Zealand (see details below), or return the product to the place of purchase. The original purchaser must bear the cost of the delivery to Targus.

Under Australian and/or New Zealand Consumer Laws, in addition to any warranty Targus gives, our products come with guarantees that cannot be excluded. You are entitled to a replacement or refund for a major failure and compensation for any other reasonably foreseeable loss or damage. You are entitled to have the products repaired or replaced if they fail to be of acceptable quality and the failure does not amount to a major failure.

For any warranty question, contact Targus Australia Pty. Ltd. (i) by mail at Suite 2, Level 8, 5 Rider Boulevard, Rhodes NSW 2138, by phone AUS 1800 641 645 or NZ 0800 633 222 or by Email: infoaust@targus.com.

For additional information, check out our website at targus.com/au/warranty.



Documents / Resources

	Targus AMP067 Control Plus Presenter Remote [pdf] User Guide 000121, OXM000121, 000120, OXM000120, AMP067, Control Plus Presenter Remote
--	---