



## Targus ACB75B Bluetooth V5.3 Dual Mode Dongle Instruction Manual

[Home](#) » [Targus](#) » Targus ACB75B Bluetooth V5.3 Dual Mode Dongle Instruction Manual 

Targus ACB75B Bluetooth V5.3 Dual Mode Dongle Instruction Manual



## Contents

- 1 Revision History
- 2 FEATURES
- 3 SPECIFICATIONS
- 4 Block Diagram
- 5 Dimension
- 6 WELCOME
- 7 Features
- 8 System Requirement
- 9 Before You Start
- 10 Driver Installation
- 11 How to Use Bluetooth USB Adapter
- 12 Connect to Remote Device
- 13 File Transfer between Bluetooth devices
- 14 Join a Personal Area Network
- 15 Advanced Settings
- 16 Remove Icon
- 17 Documents / Resources
  - 17.1 References
- 18 Related Posts

## Revision History

Version	Date	Change Description
1.0	11/01, 2019	Initial release

The ACB75B is a dual-mode(BR/EDR + Low Energy) USB Adapter and using Realtek RTL8761BUV chip complies with Bluetooth 5. It combines a BT Protocol Stack for LM, LL, L2CAP, GATT, RFCOMM, SPP and LE.

The ACB75B is compatible with previous versions, including v2.1 + LE. For BR/EDR, it allows multiple avtive links in either slave mode or master mode. For Low Energy, it supports multiple states and allows multiple active links in slave mode. A BR/EDR link and an LE link can be active at the same time.

## FEATURES

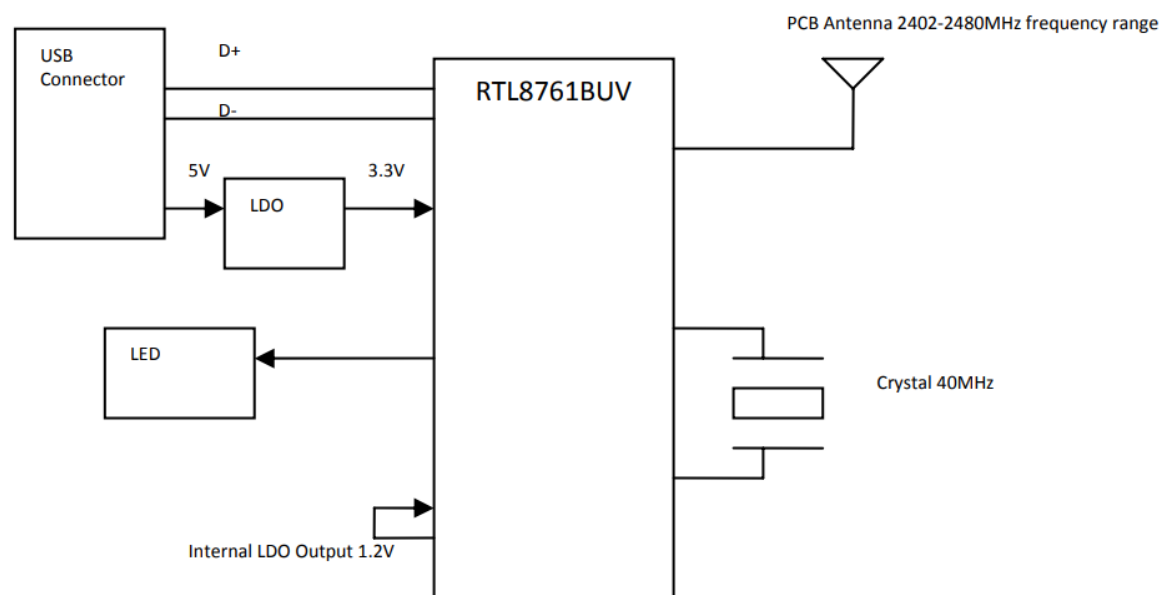
- Bluetooth 5 specification compliant
- Supports Bluetooth classic (BR/EDR)
- Supports Bluetooth Low Energy (BLE)
- Single-end RF radio output with high performance up to 4.25dBm
- Supports Power Control
- Fast AGC control to improve receiving dynamic range

## SPECIFICATIONS

Model Name	ACB75B
Product Name	Bluetooth V5.3 Dual-Mode Dongle
Standard	Bluetooth v2.1 /v5 dual mode
Frequency Band	2.4-2.4835GHz unlicensed ISM band
Spread Spectrum	FHSS (Frequency Hopping Spread Spectrum)
Transfer Rates	2Mbps data rate
RF Output Power	4.25 dBm
Sensitivity	-95dBm@BLE / -92dBm@2Mbps EDR
Input power	DC 5V (via USB Port)
I/O Interface	USB
LED Indicator	Configurable
OS Support	Linux, Windows 7/8.1/10 (inbox ready)
Environment	Operation temperature: 0 – + 60 degree
EnvironmentSize	Storage temperature: -20 – +70 degree
	Humidity: 5 – 90% non-condensing
	19.47 x 16 x 8.1 mm (L x W x H)

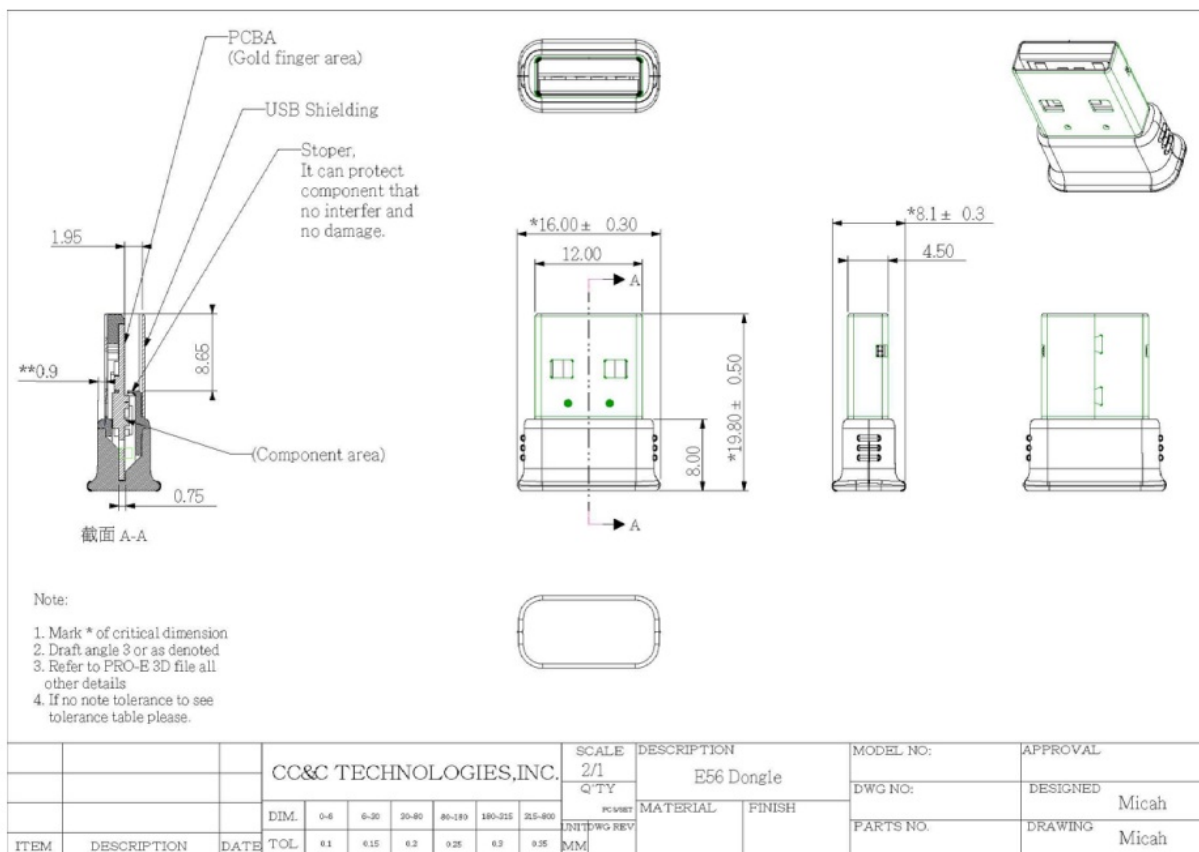
Specifications are subject to change without notice

## Block Diagram



## Dimension

Subject to change without notice



## WELCOME

Thank you for your purchase of the Bluetooth USB Adapter. Featuring Bluetooth wireless technology, Bluetooth USB Adapter creates cable-free connections between your PCs and other Bluetooth devices. Bluetooth USB Adapter supports Bluetooth 5.0 standard and compatible with all Bluetooth certified devices.

## Features

- Compliant with Bluetooth standard version 5.0
- (BR, EDR), LE dual mode
- Support for Microsoft Windows 7 / 8.1 / 10 / 11
- Easy operate and set up.

## System Requirement

- Processor: Intel Celeron/ Pentium IV or above. AMD Athlon or above
- **Operating System:** Microsoft Windows 7 / 8.1 / 10 / 11
- **System memory:** based on Windows OS hardware requirements
- **Hard Drive Free Space:** 250MB or above

We still proposal end user your PC / Notebook system not more than one Bluetooth device (only one BT device), so final we wish the PC / Notebook can disable / removal build-in the Bluetooth device hardware.

Ps. How to removal your PC/notebook Bluetooth device hardware? You can contact your PC/notebook vendor let vendor tell you how to do removal Bluetooth device. Because each vendor build-in Bluetooth device seat will different and then ask your PC/notebook vendor will be the fast way to correct.

## Before You Start

Please remove any previous version of Bluetooth driver existing in your operation system.

The remove procedures are as follows:

**Step 1:** Click Start/Settings, then select Control Panel.

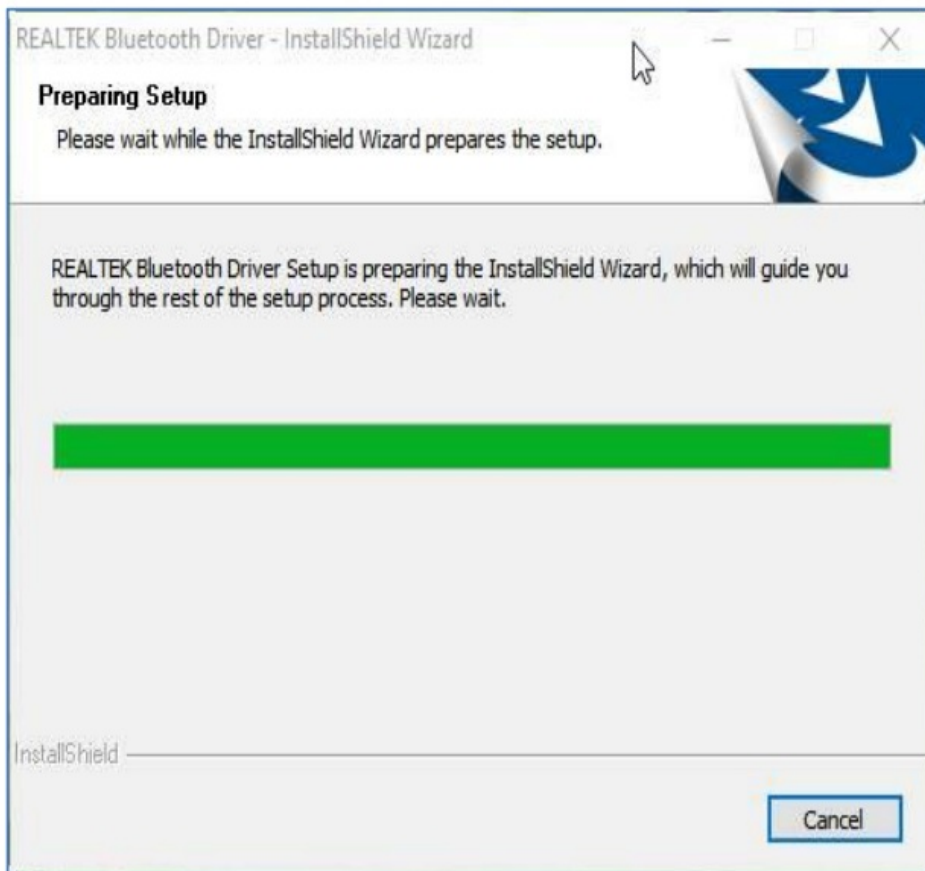
**Step 2:** In the Control Panel window, double click Add/Remove programs

**icon. Step 3:** Find out the “REALTEK Bluetooth Driver” Software then remove it

## Driver Installation

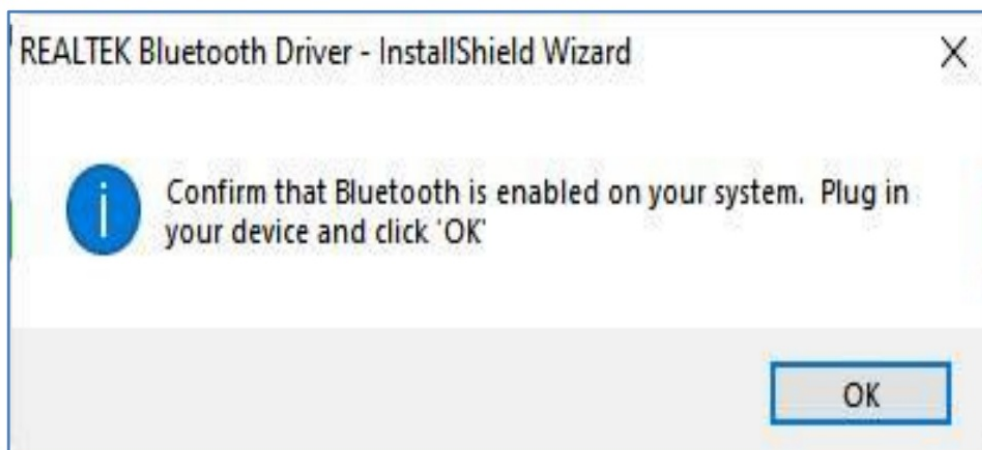
### Step 1:

Put Driver CD into CD drive of your PC, an auto-installation program will start to guide you to complete the installation step by step.



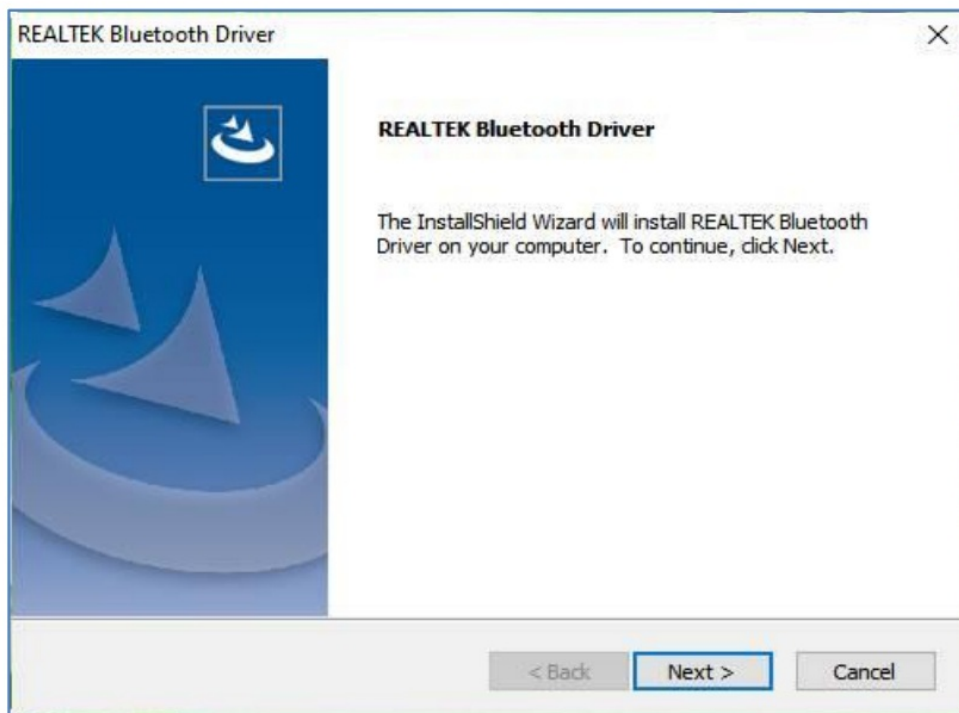
### Step 2:

Please insert Bluetooth USB Adapter and click “OK” button to continue installation.



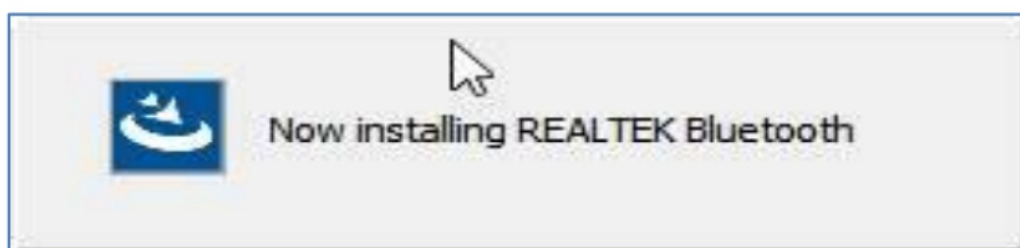
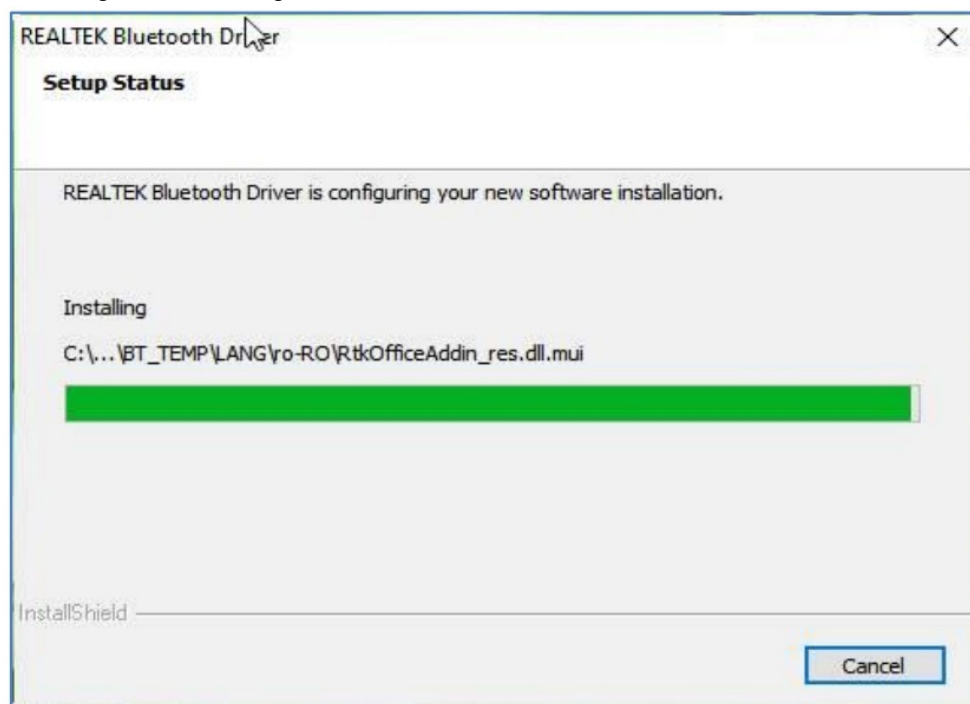
### Step 3:

After everything is checked by setup wizard, click “Next” button to start installation.



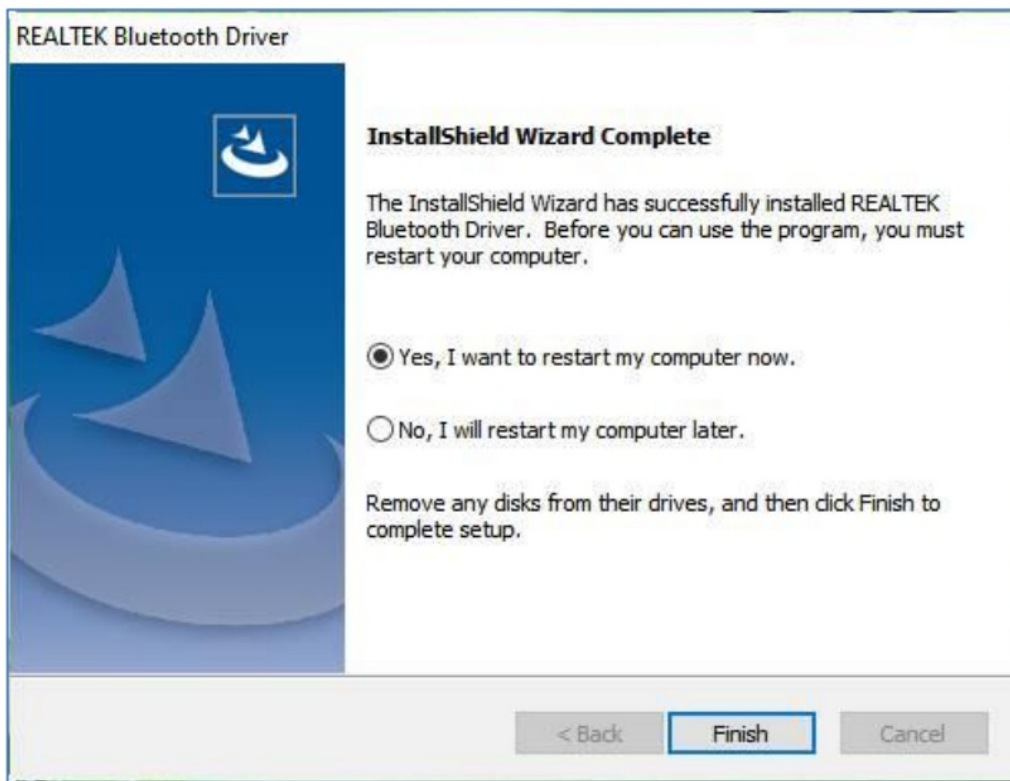
### Step 4:

Installing driver's dialogs are shown.



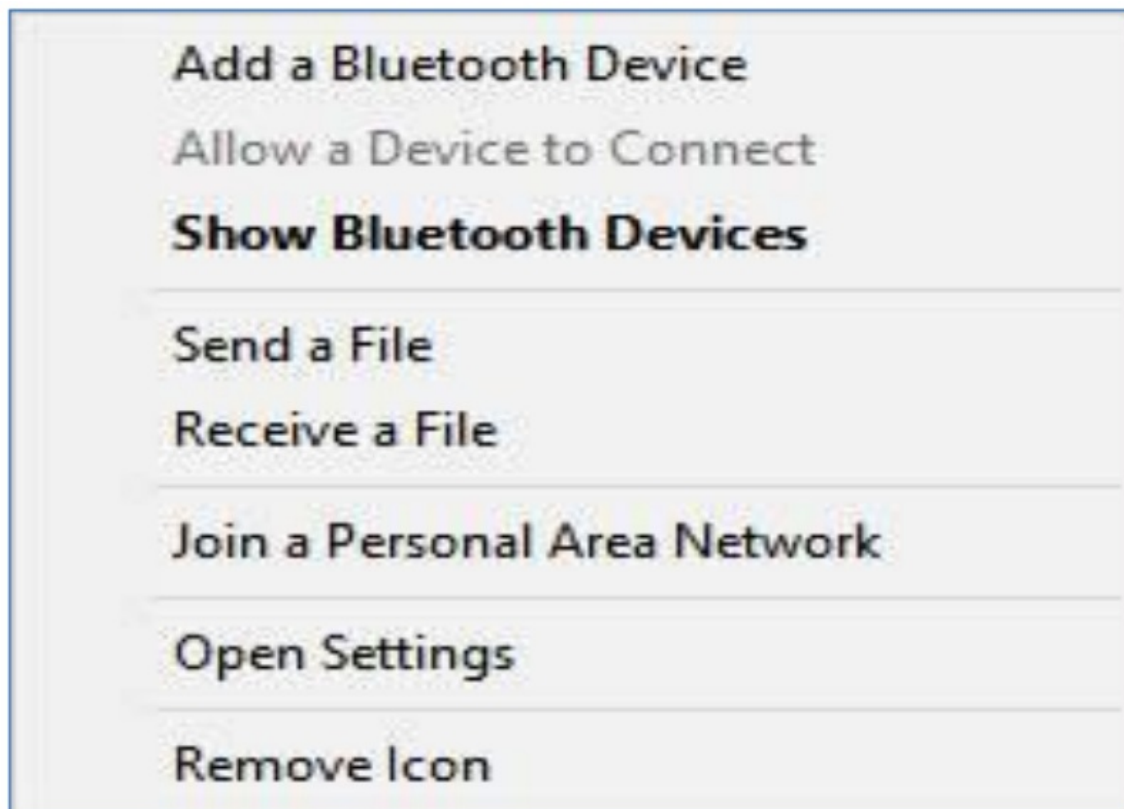
### Step5:

Installation Completed and Click “Finish” button.



## How to Use Bluetooth USB Adapter

Right Click "Bluetooth Icon" in taskbar and setup menu is shown.



The basic connection of Bluetooth devices flow is below



## Connect to Remote Device

- Turn on Bluetooth Device
- Add a Bluetooth Device

<https://support.microsoft.com/en-us/windows/add-a-device-to-a-windows-10-pc-ae095699-4d4f-40da-02-e9662a855364>

## File Transfer between Bluetooth devices

- Send a File

<https://support.microsoft.com/en-us/windows/send-files-over-bluetooth-in-windows-36f8cf26-d1ff-50d1-4b73-3a56e5b43e6a>

- Receive a File

<https://support.microsoft.com/en-us/windows/receive-files-over-bluetooth-d8da2667-e79b-744c-c135-f58af38fc3ba>

## Join a Personal Area Network

- Prerequisite

Remote Bluetooth Device contains the terminal of Wired, Wi-Fi or Cellular connection in the network.

## Advanced Settings

- Open Settings

<https://support.microsoft.com/en-us/windows/how-to-find-bluetooth-settings-in-windows-5027e93e-6e8-4b4f-a412-c6c6cd6f57cc>

## Remove Icon

- Remove Bluetooth Icon from windows taskbar

This device complies with Part 15 of the FCC Rules. Operation is subject to the following two conditions: (1) This device may not cause harmful interference, and (2) This device must accept any interference received, including interference that may cause undesired operation

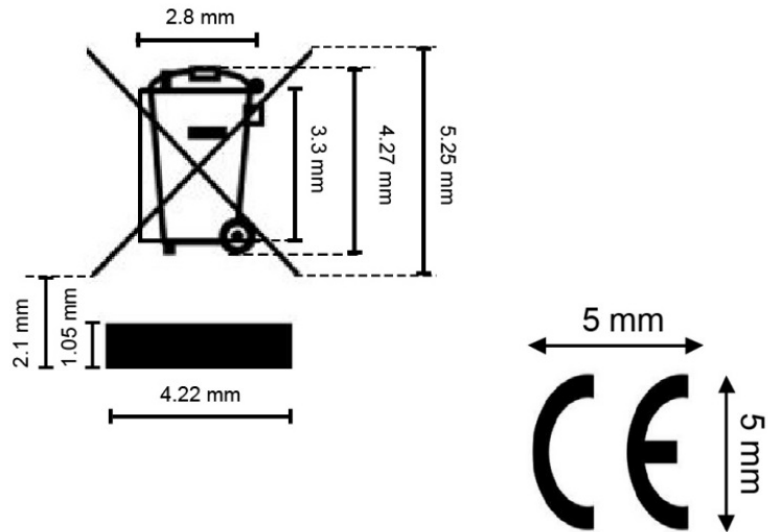
This equipment has been tested and found to comply with the limits for a Class B digital device, pursuant to part 15 of the FCC Rules. These limits are designed to provide reasonable protection against harmful interference in a residential installation. This equipment generates, uses and can radiate radio frequency energy and, if not installed and used in accordance with the instructions, may cause harmful interference to radio communications. However, there is no guarantee that interference will not occur in a particular installation. If this equipment does cause harmful interference to radio or television reception, which can be determined by turning the equipment off and on, the user is encouraged to try to correct the interference by one or more of the following measures:

- Reorient or relocate the receiving antenna.
- Increase the separation between the equipment and receiver.
- Connect the equipment into an outlet on a circuit different from that to which the receiver is connected.
- Consult the dealer or an experienced radio/TV technician for help.



To assure continued compliance, any changes or modifications not expressly approved by the party responsible for compliance could void the user’s authority to operate this equipment. (Example use only shielded interface cables when connecting to computer or peripheral devices).

This equipment complies with FCC RF radiation exposure limits set forth for an uncontrolled environment. This transmitter must not be colocated or operating in conjunction with any other antenna or transmitter.



Industry Canada Statement— Radio

This device complies with Industry Canada’s licence-exempt RSSs. Operation is subject to the following two conditions:

- 1. This device may not cause interference; and
- 2. This device must accept any interference, including interference that may cause undesired operation of the d device.

ISED RF exposure statement:

This equipment complies with ISED radiation exposure limits set forth for an uncontrolled environment.

Documents / Resources

<div><div>Targus</div><div>ACB75B Bluetooth V5.3 Dual-Mode Dongle Manual (Product Specifications)</div><div>Version 1.0 Part no: 2015-01-01</div></div>	<div><div><a href="#">Targus ACB75B Bluetooth V5.3 Dual Mode Dongle</a> [pdf] Instruction Manual</div><div>ACB75B, OXM000147, 000147, ACB75B Bluetooth V5.3 Dual Mode Dongle, Bluetooth V5.3 Du al Mode Dongle, V5.3 Dual Mode Dongle, Dual Mode Dongle, Dongle</div></div>
---	---

References

-  [Add a device to a Windows 10 PC - Microsoft Support](#)
-  [How to find Bluetooth settings in Windows - Microsoft Support](#)
-  [Receive files over Bluetooth - Microsoft Support](#)
-  [Send files over Bluetooth in Windows - Microsoft Support](#)

Manuals+.