

TAOTRONICS TT-DL046 LED Floor Lamp User Guide

[Home](#) » [TaoTronics](#) » TAOTRONICS TT-DL046 LED Floor Lamp User Guide 

Contents

- [1 TAOTRONICS TT-DL046 LED Floor Lamp](#)
- [2 Product Diagram](#)
- [3 Assembly and Disassembly](#)
- [4 How to Use](#)
- [5 Specifications](#)
- [6 Documents / Resources](#)
- [7 Related Posts](#)



TAOTRONICS TT-DL046 LED Floor Lamp



EUROPE

E-mail:

support.uk@taotronics.com(UK)

support.de@taotronics.com(DE)

support.fr@taotronics.com(FR)

support.es@taotronics.com(ES)

support.it@taotronics.com(IT)

EU Importer: ZBT International Trading GmbH

Address: Halstenbeker Weg 98C, 25462 Rellingen, Deutschland

NORTH AMERICA

E-mail : support@taotronics.com(US)

support.ca@taotronics.com(CA)

Tel : 1-888-456-8468 (Monday-Friday: 9:00 – 17:00 PST)

US Distributor: SUNVALLEYTEK INTERNATIONAL INC.

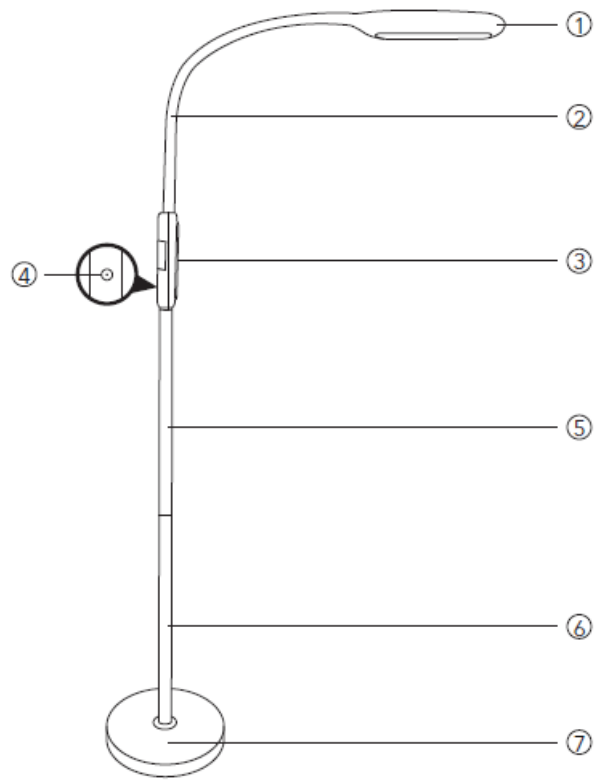
Address: 46724 Lakeview Blvd, Fremont, CA 94538

MANUFACTURER

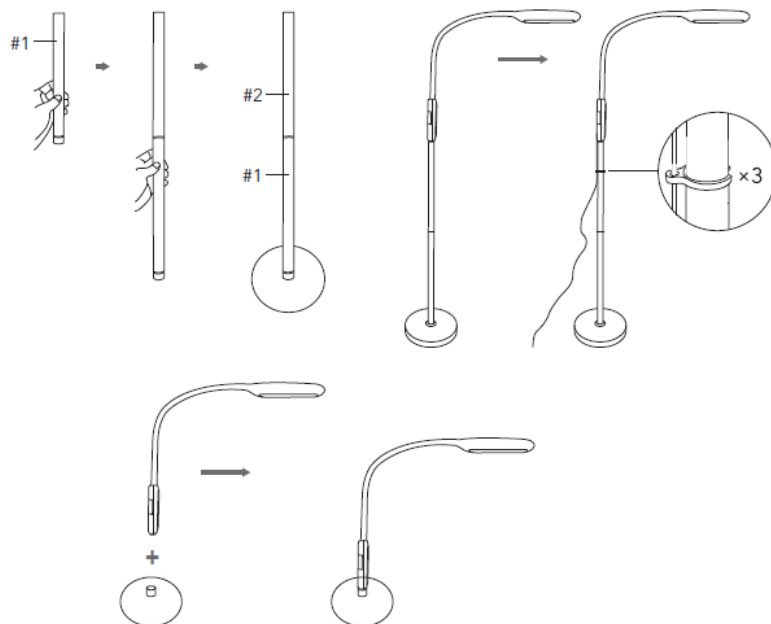
Manufacturer: Shenzhen NearbyExpress Technology Development Co.,Ltd. Address: 333 Bulong Road, Shenzhen, China, 518129

Learn more about the EU Declaration of Conformity:

<https://www.taotronics.com/downloads-TT-DL046-CE-Cert.html>



Product Diagram

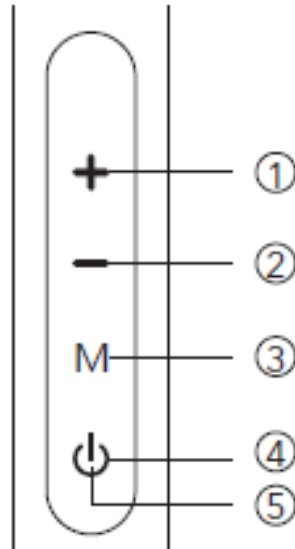


1. Lamp Head
2. Gooseneck
3. Control Panel
4. Power Socket
5. Pole Section #2
6. Pole Section #1
7. Base

Assembly and Disassembly

Note:

- When connecting the sections, rotate in opposite directions with both hands and do not screw with too much force.
- You can choose to use different numbers of sections for different purposes and scenes.
- To disassemble, follow the assembly steps as above in the reverse order.

How to Use

1. Brightness +
2. Brightness –
3. Color Temperature Button
4. Power / Timer Button
5. Power Indicator

Standby Mode

Connect the lamp to a power source and it will enter standby mode. The Power Indicator on the Power Button will light up.

Power On / Off

Tap the Power Button to turn the lamp on / off.

Color Temperature / Brightness Adjustment

Tap the Color Temperature Button to cycle through 3 color temperature settings. Tap the Brightness + / – Button to adjust 5 levels of brightness in each color temperature setting.

Auto Shutoff Timer

Press and hold the Power / Timer Button for 2 seconds, the Power Indicator will start to flicker and activate a 60 minutes auto shut-off timer. Repeat this operation or press the Power / Timer Button to turn off the timer.

Adjust the Lamp Head

Note: Please do not turn the lamp head for over 180° to avoid damaging the gooseneck.

Specifications

Model	TT-DL046
Light Source	LED
Operate Voltage	DC 10V / 1.2A
Power	12W
Color Temperature	2800 – 3300K (Warm White) 4000 – 4600K (Natural White) 5000 – 5500K (Cool White)
Lumens	1850 lm
CRI	>80

Caution

- Please do not dismantle the product by yourself, always ask a professional electrician or authorized technician for
- If you smell a bad odor or anything unusual, please turn off the unit
- Please do not remove the power cable with wet hands as it may cause an electric
- Do not put this unit near extreme heat sources, moisture, or corrosive
- Clean the lamp with a dry cloth when
- Please store the lamp in a dry and shady place if not being used for a long period of
- Use the original power adapter to power the A wrong input may damage the lamp.

Documents / Resources

	TAOTRONICS TT-DL046 LED Floor Lamp [pdf] User Guide TT-DL046, LED Floor Lamp, TT-DL046 LED Floor Lamp
-------------------------------------------------------------------------------------	--------------------------------------------------------------------------------------------------------------------------