



TAOS PC404A Evaluation Module User Guide

[Home](#) » [TAOS](#) » TAOS PC404A Evaluation Module User Guide 

Contents

- [1 TAOS PC404A Evaluation Module](#)
- [2 Introduction](#)
- [3 Functional Description](#)
- [4 Operation](#)
- [5 Documents / Resources](#)
- [6 Related Posts](#)



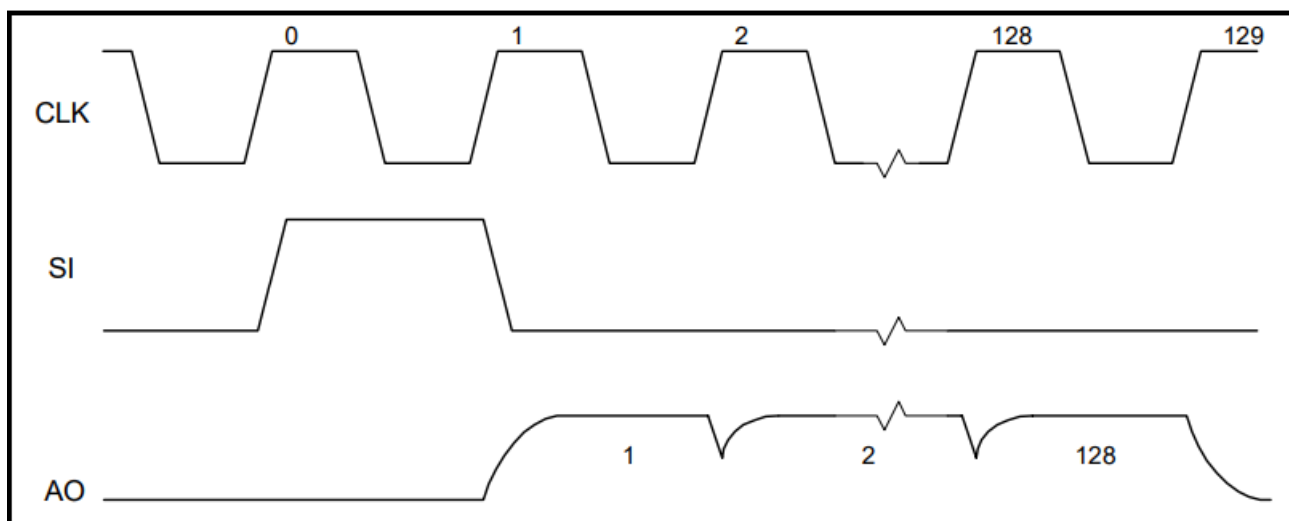
TAOS PC404A Evaluation Module



Introduction

The PC404A facilitates evaluation of the TAOS analog linear sensor arrays (TSL201, TSL202, TSL208, TSL1401, TSL1402, TSL1406, TSL1410, or TSL1301) by providing the necessary timing and clock signals to support the

The analog output voltage is directly proportional to the light intensity and the integration time up to the devices saturation level (3.5V typ). The proportionality constant is the responsivity of the device given in (V*cm²/uW*sec). Responsivity is wavelength dependent. For the linear arrays the responsivity will peak at about 770nm.



Operation

To operate the PC404A, apply 5VDC to the board using a regulated lab power supply. Connect an oscilloscope probe to the Ao terminal and the scope ground to one of the GND terminals. For best results, connect another probe to the SI terminal and use that signal to trigger the oscilloscope.

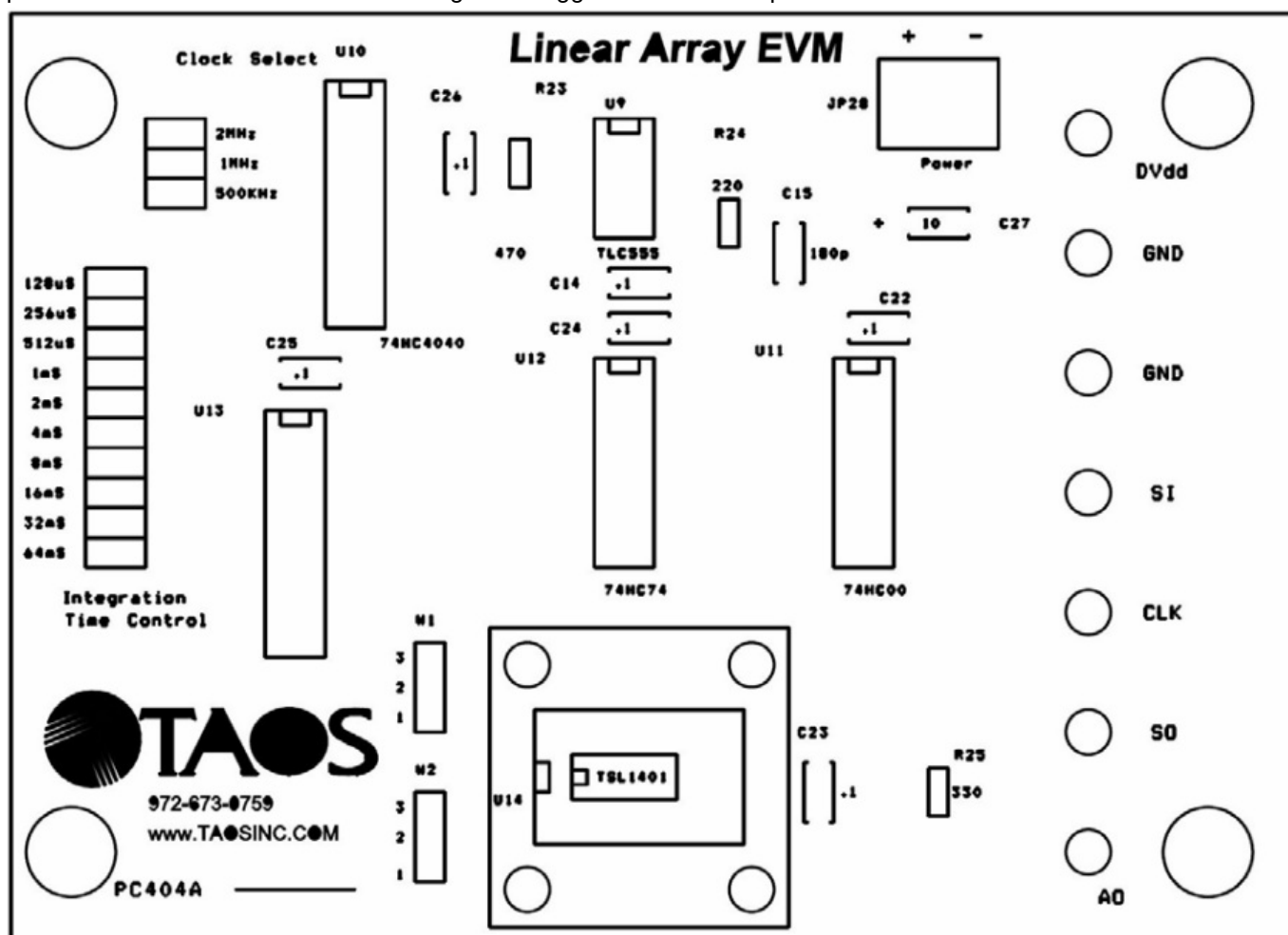
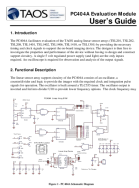


Table 1 – W1 and W2 Jumper Configuration

DEVICE	JUMPER W1	JUMPER W2
TSL1301 / 1401R / 201R	Open	1-2
TSL1402R / TSL202R	2-3	2-3
TSL1406R / TSL1410R / TSL1412R	2-3	2-3
TSL208	Open	Open
TSL210R	Open	Open
TSL2014	Open	Open

[Arrow.com](https://www.arrow.com).

Documents / Resources

	<p>TAOS PC404A Evaluation Module [pdf] User Guide PC404A, Evaluation Module, PC404A Evaluation Module, Module</p>
---	---

[Manuals+](#).