

**tala**  
CORE-DL-WT-01-US Core  
Recessed Downlight



## tala CORE-DL-WT-01-US Core Recessed Downlight User Guide

[Home](#) » [TALA](#) » tala CORE-DL-WT-01-US Core Recessed Downlight User Guide 

### Contents

- [1 tala CORE-DL-WT-01-US Core Recessed Downlight](#)
- [2 Specifications](#)
- [3 Installation](#)
- [4 FOR ANGLED INSTALLATION](#)
- [5 CARE AND CLEANING](#)
- [6 WARRANTY AND AFTER-CARE](#)
- [7 FAQs](#)
- [8 Documents / Resources](#)
  - [8.1 References](#)

**tala**

**tala CORE-DL-WT-01-US Core Recessed Downlight**



### Specifications

- SKU: CORE-DL-WT-01-US
- Input Voltage: 110 – 120V

### **Before Starting**

Please read the instructions thoroughly before installation and keep them for future reference. Take extreme care when dealing with electrical equipment to ensure the safety and longevity of the product.

### **Installation**

1. **Step 1:** Create a 76mm/3in hole for the fixture. Insert the Recessed trim into the cutout.
2. **Step 2:** Identify household wiring and attach the Junction box wiring to the supply.
3. **Step 3:** Click the Core Light Engine into the Downlight insert using metal spring clips.
4. **Step 4:** Attach the Core Light Engine to the Junction Box in the ceiling using clip connectors.
5. **Step 5:** Insert the Downlight into the recessed trim and attach the Straight reflector.

### **Angled Installation**

If an angled installation is desired, follow the instructions to tilt the Light Engine 45 degrees and insert the Angled reflector into the Downlight insert.

### **Care and Cleaning**

Clean with a soft, dry cloth. For further cleaning, use warm, soapy water. Avoid abrasive materials, alcohol, or solvents as they may damage the lacquer.

### **Warranty and After-Care**

This product comes with a two-year warranty. Contact [customerservice@tala.co.uk](mailto:customerservice@tala.co.uk) in case of any functional defects within this period. Damaged cables should only be replaced by qualified personnel.

- Thoughtful lighting, responsibly designed in London. Thank you for making the switch to Tala.
- Discover the full Tala family at [talalighting.com](https://talalighting.com)

### **BEFORE STARTING**

Please read the instructions thoroughly before installation and keep them for future reference. Please take extreme care when dealing with electrical equipment. Improper assembly can undermine the safety and longevity of the product.

### **IMPORTANT**

This light fitting must be connected to the supply earth. If your lighting circuit does not have an earth, ask a qualified electrician to provide an earth facility. This fitting operates on 120V mains voltage.

This product is for indoor use only.

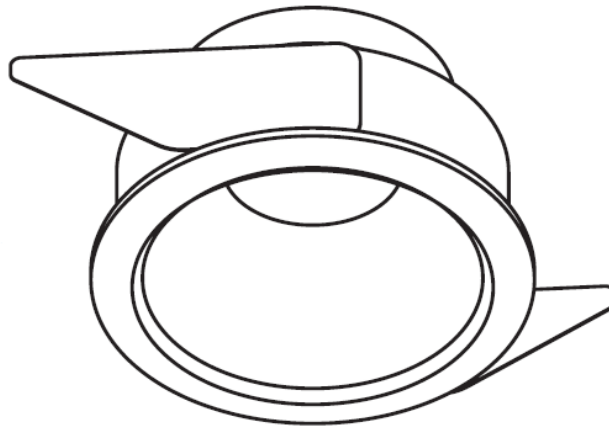
### **WARNING**

Always switch off electricity supply at the mains during installation and maintenance. We recommend that the fuse is withdrawn or the circuit breaker is switched off whilst work is in progress. Do not just turn off at the wall switch. All fittings must be installed in accordance with current NFPA 70, National Electrical Code (NEC).

### **RECOMMENDED EQUIPMENT**

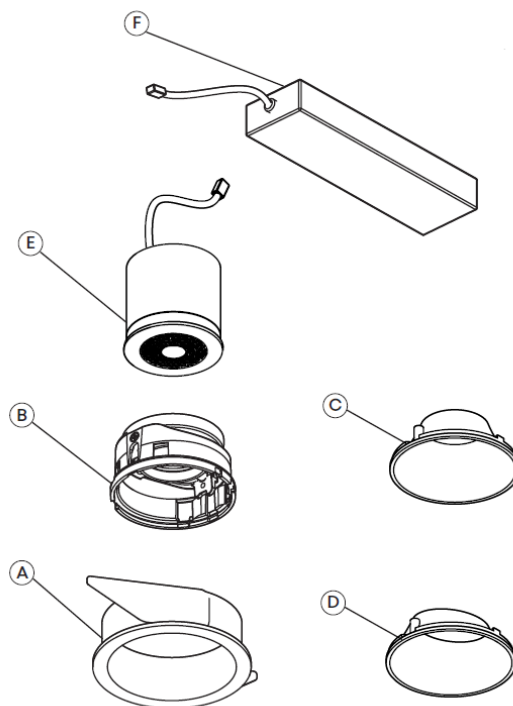
- Ø76mm/3in Hole saw
- Wire strippers

- Insulation tape
- Further equipment may be required for fixing to your wall or ceiling



### Core Downlight – Provided Components

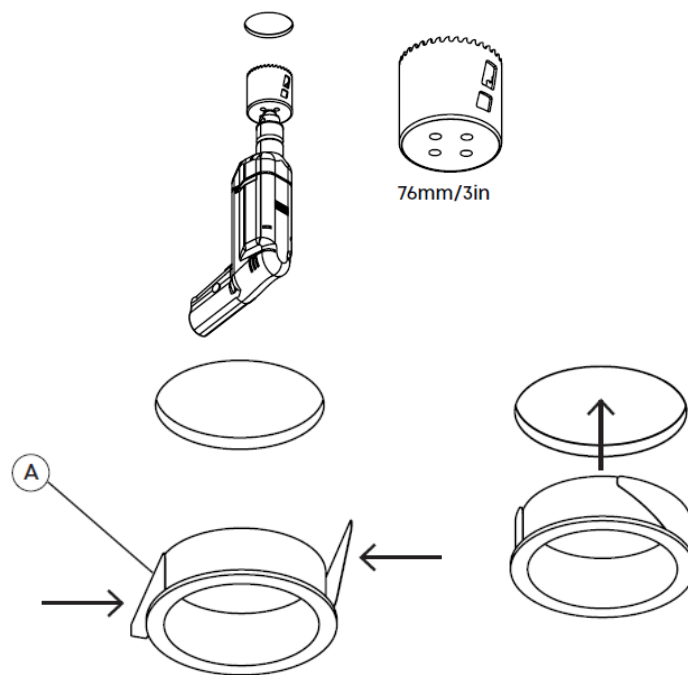
- A x1 Recessed trim
- B x1 Downlight insert
- C x1 Straight reflector
- D x1 Angled reflector
- E x1 Core Light Engine
- F x1 Driver and junction box



### STEP 1

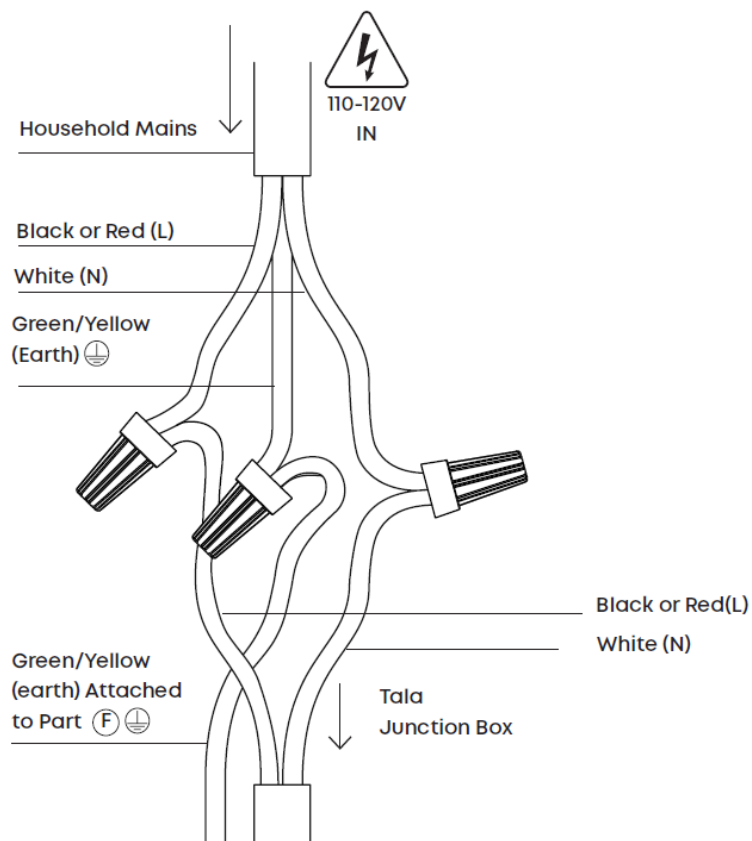
- Create a 76mm/3in hole for the fixture.
- This downlight is designed to be installed after plastering.

- Insert the Recessed trim A into the cutout by folding in the flanges.
- Releasing the flanges will hold the fixture in place.



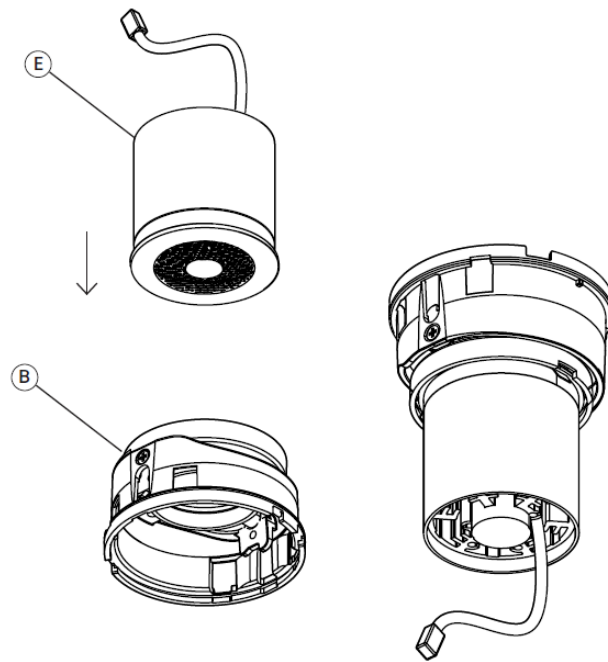
## STEP 2

- Identify your household wiring using the current Building Regulations and IEE Wiring Regulations.
- Attach the Junction box wiring to your household supply as shown.



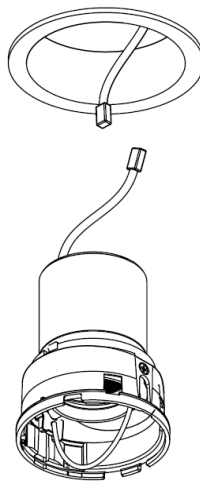
## STEP 3

- Click the Core Light Engine E into the Downlight insert B using the metal spring clips.



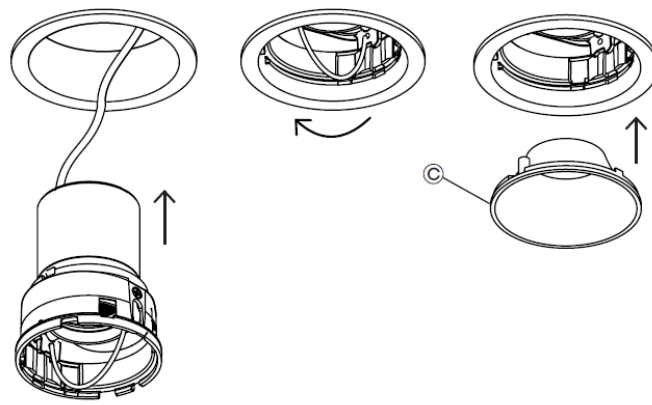
#### STEP 4

- Attach the Core Light Engine to the Junction Box in the ceiling using the clip connectors.



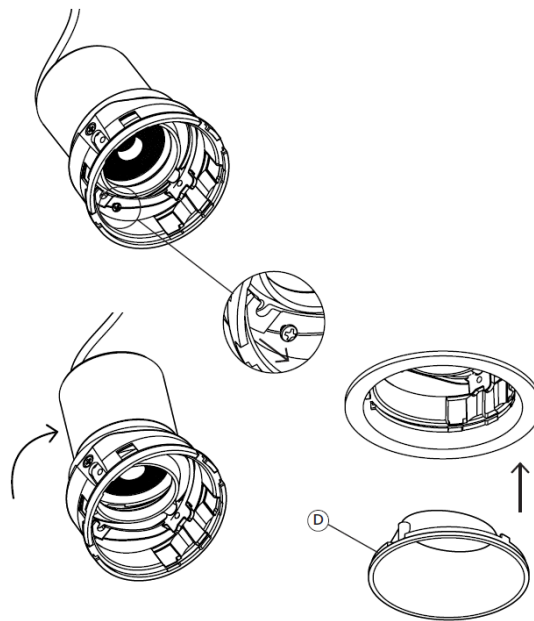
#### STEP 5

- Insert the Downlight into the recessed trim.
- Fold down the handle.
- Insert the Straight reflector C into the Downlight insert, aligning the magnetic pins to secure in place.



## FOR ANGLED INSTALLATION

- Remove the screw in the Downlight insert.
- Tilt the Light Engine 45 degrees.
- Insert the Angled reflector.
- D into the Downlight insert, aligning the magnetic pins to secure in place.



## CARE AND CLEANING

- We recommend cleaning with a soft, dry cloth.
- If required, further cleaning can be achieved with warm, soapy water. Do not use abrasive material, as this will damage the lacquer.
- Do not use alcohol or other solvents.

## WARRANTY AND AFTER-CARE

- This product has a two-year warranty. If there appears to be a functional defect with the product during this time, please contact our team at [customerservice@tala.co.uk](mailto:customerservice@tala.co.uk).
- Please note, if the cable attached to this fixture is damaged, it should only be replaced by a qualified person.

## Join the Community

- [hello@tala.co.uk](mailto:hello@tala.co.uk)
- Instagram: @tala
- Facebook: talaHQ
- Pinterest: TalaLED
- Tag: lighttoliveby
- Tala Studios, 25B Vyner Street, London E2 9DG
- Tala North America Inc. C/O LH Frishkoff & Company, 546 5th Avenue, FL 9 New York NY 10036

## FAQs

### What should I do if my lighting circuit does not have an earth?

If your lighting circuit lacks an earth connection, consult a qualified electrician to provide an earth facility for safe installation.

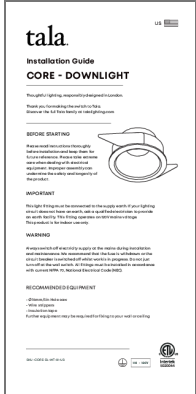
### Can I use abrasive materials for cleaning?

Avoid abrasive materials as they can damage the lacquer finish. Clean with a soft dry cloth or warm, soapy water if necessary.

### Where can I find more products from Tala?

Discover the full Tala family at [talalighting.com](https://talalighting.com) for more products.

## Documents / Resources

	<p><a href="#">tala CORE-DL-WT-01-US Core Recessed Downlight</a> [pdf] User Guide CORE-DL-WT-01-US, CORE-DL-WT-01-US Core Recessed Downlight, CORE-DL-WT-01-US, Core Recessed Downlight, Recessed Downlight, Downlight</p>
-------------------------------------------------------------------------------------	--------------------------------------------------------------------------------------------------------------------------------------------------------------------------------------------------------------------------------

## References

- [User Manual](#)

### [Manuals+](#) [Privacy Policy](#)

This website is an independent publication and is neither affiliated with nor endorsed by any of the trademark owners. The "Bluetooth®" word mark and logos are registered trademarks owned by Bluetooth SIG, Inc. The "Wi-Fi®" word mark and logos are registered trademarks owned by the Wi-Fi Alliance. Any use of these marks on this website does not imply any affiliation with or endorsement.