

Takealot SC896R Full Page Reading Magnifier With LED Light



Takealot SC896R Full Page Reading Magnifier With LED Light User Manual

[Home](#) » [takealot](#) » Takealot SC896R Full Page Reading Magnifier With LED Light User Manual 

Contents

- 1 Takealot SC896R Full Page Reading Magnifier With LED Light
- 2 Product Information
- 3 Product Usage Instructions
- 4 FAQ
- 5 PRODUCT DESCRIPTION
- 6 BATTERY INSTALLATION
- 7 INSTALLATION
- 8 LED LIGHTS
- 9 BATTERY WARNINGS
 - 9.1 CLEANING & MAINTENANCE
- 10 Documents / Resources
 - 10.1 References

takealot

Takealot SC896R Full Page Reading Magnifier With LED Light



Product Information

Specifications:

- Model: SC896R/1818
- Type: Full-Page Reading Magnifier with LED Light
- Material: Acrylic Magnifier
- Power Source: 4 x 1.5V AA Batteries (not included)

Product Description:

This full-page reading magnifier with LED light is designed to assist users in reading small prints or fine details with ease. The magnifier features a swivel arm for adjustable positioning, a battery compartment for powering the LED light, an on/off switch\ with adjustable light dimmer, adjustable support for stability, and clips to hold documents in place.

Battery Installation:

1. Ensure the switch is in the off position before replacing the batteries.
2. Open the battery compartment located on the device.
3. Insert 4 x 1.5V AA batteries into the compartment following the correct polarity (+/-).
4. Close the battery compartment securely.
5. Turn on the device and adjust the LED light dimmer to your desired brightness.

Product Usage Instructions

1. Place the magnifier on a flat surface.
2. Adjust the swivel arm to position the magnifier over the text or object you wish to magnify.
3. If needed, use the adjustable support to stabilize the magnifier.
4. Turn on the LED light and adjust the brightness using the dimmer switch for optimal illumination.
5. Read or examine the text/object through the magnifier lens for clear magnification.

FAQ

- **Q: Can the LED light be replaced if it stops working?**

- A: The LED light in this product is not replaceable. If the LED light stops working, please contact customer support for further assistance.

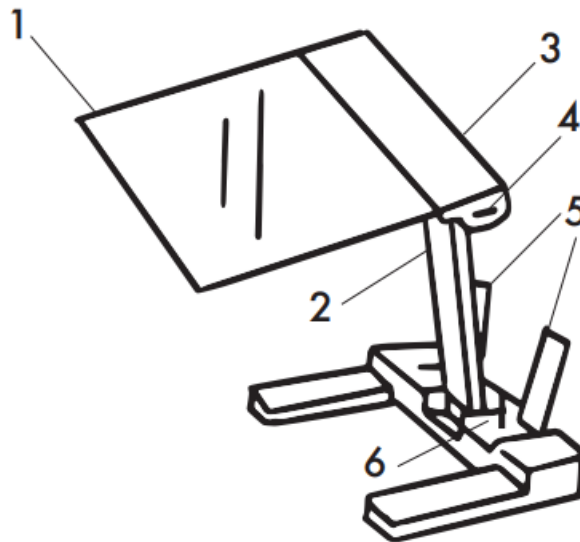
- **Q: How do I clean the acrylic magnifier lens?**

- A: Use a soft, lint-free cloth to gently wipe the acrylic magnifier lens. Avoid using harsh chemicals or abrasive materials that may scratch the lens surface.

READ THE INSTRUCTIONS BEFORE USE AND KEEP FOR FUTURE REFERENCE

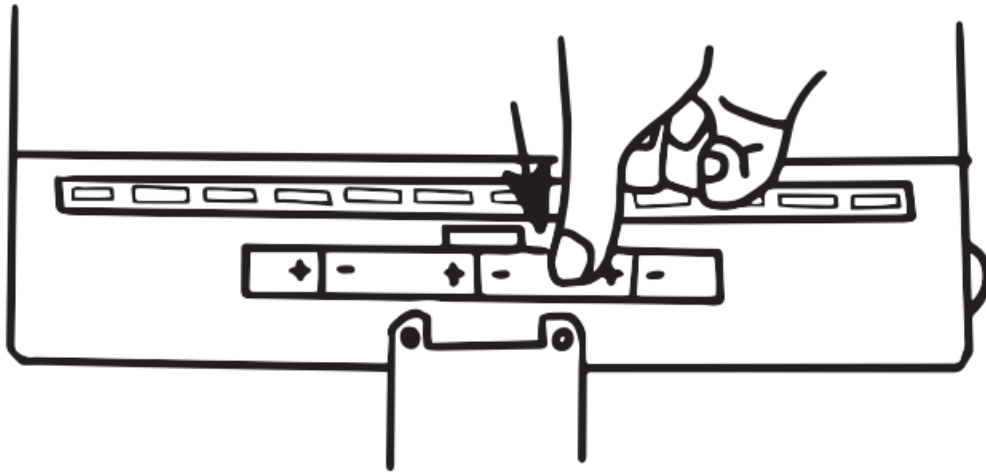
PRODUCT DESCRIPTION

1. ACRYLIC MAGNIFIER
2. SWIVEL ARM
3. BATTERY COMPARTMENT
4. ON/OFF SWITCH AND ADJUSTABLE LED LIGHT DIMMER
5. ADJUSTABLE SUPPORT (X2)
6. CLIPS



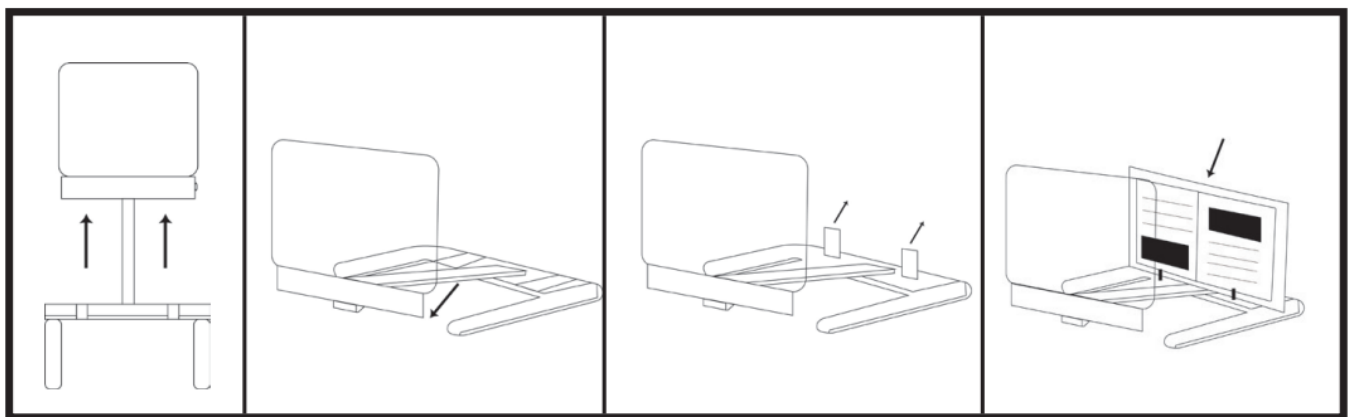
BATTERY INSTALLATION

BATTERIES REQUIRED: 4 X 1.5V AA (NOT INCLUDED) BEFORE REPLACING THE BATTERIES MAKE SURE THE SWITCH IS IN THE "OFF" POSITION. (MAKE SURE TO TURN ALL THE WAY TO THE <OFF POSITION) OPEN THE BATTERY COMPARTMENT LOCATED ON THE BACK OF THE MAGNIFIER. PAYING ATTENTION TO THE POLARITY INDICATED INSIDE. POSTION 2 BATTERIES ON THE LEFT. ONE BATTERY ON THE FAR RIGHT THEN THE LAST IN THE MIDDLE. SEE THE ILLUSTRATION.



BACK OF THE MAGNIFIER

INSTALLATION



LAY ON FLAT
STABLE SURFACE

LOWER THE
MAGNIFYING
GLASS AS
SHOWN IN
ILLUSTRATION

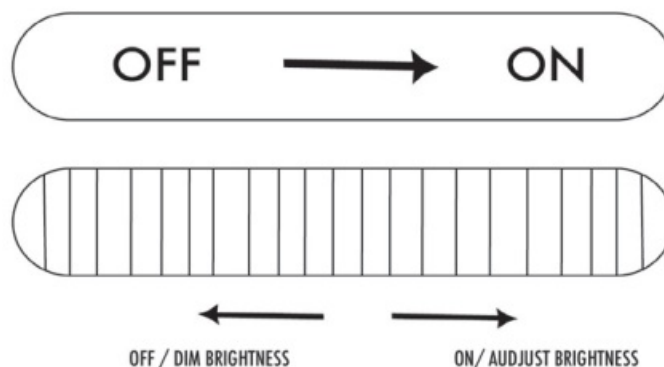
LIFT THE 2 SUP-
PORTS&ADJUST
THEM TO YOUR
LIKING

PLACE BOOK/TAB-
LET/ MAGAZINE
BETWEEN THE
SUPPORTS & CLIPS
TO HOLD IT IN
PLACE

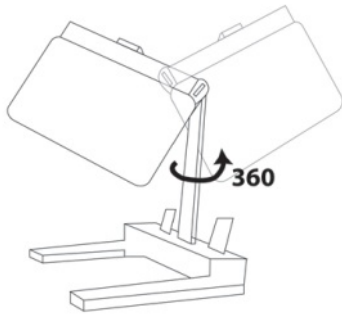
NOTE: CLIPS ARE ADJUSTABLE. SIMPLY REMOVE THEM AND INSERT THEM INTO ONE OF THE 4 SLOTS DEPENDING ON THE THINKNESS OF THE BOOK/TABLET/MAGAZINE, ECT.

LED LIGHTS

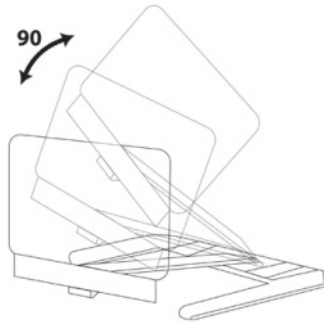
TURN ON AND INCREASE BRIGHTNESS TO TURN ON LED LIGHTS: TURN THE DIAL UNTIL HEAR A CLICK. TURN OFF AND DECREASE BRIGHTNESS SLOWLY TURN THE DIAL TO THE OFF POSITION TO DECREASE THE BRIGHTNESS. KEEP TURNING THE SWITCH UNTILL YOU HEAR A CLICK TO TURN OFF.



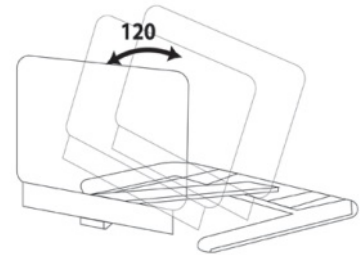
ROTATION



UP & DOWN



ADJUSTABLE HEAD



ATTENTION

- DO NOT LEAVE THE MAGNIFIER EXPOSED TO DIRECT SUNLIGHT!
- DO NOT LOOK DIRECTLY AT THE SUN THROUGH MAGNIFYING GLASSES OR WITH THE NAKED EYE TO AVOID INJURY!
- DO NOT SHINE LIGHT BEAM DIRECTLY INTO EYES!
- DO NOT CLEAN OR IMMERSE THE LAMP IN LIQUID!
- THIS IS NOT A TOY. KEEP OUT THE REACH OF CHILDREN!
- KEEP AWAY FROM HEAT SOURCES!
- HANDLE THE PRODUCT WITH CARE!
- A BLOW, SHOCK OR FALL, EVEN FROM A LOW HEIGHT CAN DAMAGE IT.

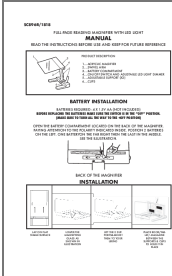
BATTERY WARNINGS

- IF THE MAGNIFYING LED LIGHTS IS NOT USED FOR A LONG TIME, OR IF THE LIGHT IS DIM: REMOVE THE BATTERIES AND REPLACE THEM.
- ALWAYS USE THE BATTERIES OF THE RECOMMENDED OR EQUIVALENT TYPE.
- RESPECT THE POLARITY OF THE BATTERIES.
- DO NOT MIX NEW AND USED BATTERIES.
- DO NOT MIX ALKALINE REGULAR (CARBON ZINC) AND RECHARGEABLE (NICKEL HYDRIDE) BATTERIES.
- MAKE SURE THAT THE LIGHT IS ALL THE TIME OFF TO AVOID BATTERY DRAINAGE.

CLEANING & MAINTENANCE

- USE A SOFT CLOTH TO CLEAN THE LENS. (MICRO-FIBER CLOTH)
- DO NOT USE ALCOHOL OR CORROSIVE PRODUCTS!
- DO NOT POUR OR SUBMERGE THE MAGNIFYING GLASS INTO WATER

Documents / Resources



[Takealot SC896R Full Page Reading Magnifier With LED Light](#) [pdf] User Manual
1818, SC896R Full Page Reading Magnifier With LED Light, SC896R, Full Page Reading Magnifier With LED Light, Page Reading Magnifier With LED Light, Reading Magnifier With LED Light, Magnifier With LED Light, LED Light, Light

References

- [User Manual](#)

[Manuals+](#), [Privacy Policy](#)

This website is an independent publication and is neither affiliated with nor endorsed by any of the trademark owners. The "Bluetooth®" word mark and logos are registered trademarks owned by Bluetooth SIG, Inc. The "Wi-Fi®" word mark and logos are registered trademarks owned by the Wi-Fi Alliance. Any use of these marks on this website does not imply any affiliation with or endorsement.