



TAGA HARMONY PF Series Power Line Filter Instruction Manual

[Home](#) » [TAGA HARMONY](#) » TAGA HARMONY PF Series Power Line Filter Instruction Manual 

Contents

- [1 TAGA HARMONY PF Series Power Line Filter](#)
- [2 Product Information](#)
- [3 Introduction](#)
- [4 Safety Instructions](#)
- [5 Controls and Displays](#)
- [6 Hooking Up the Filter and Operation](#)
- [7 FAQ](#)
- [8 Documents / Resources](#)
 - [8.1 References](#)



TAGA HARMONY PF Series Power Line Filter



Specifications

- **Product Name:** PF Series Power Noise Filters
- **Input Voltage:** 230-240V
- **Functionality:** Power noise filtering, surge and overload protection

Product Information

The TAGA Harmony power line filter is designed to provide power noise filtering and surge protection for audio-video equipment. It helps to reduce interference from the electricity network, improving the performance and longevity of your system.

Power Noise Filtering

Electricity networks can be affected by electromagnetic interference generated by various appliances, which can impact the performance of audio-video systems. The PF filter acts as a buffer between the wall socket and your equipment, reducing the impact of these interferences.

Surge and Overload Protection

The PF filter includes surge and overload protection for all outputs, thanks to a filtering and protection system with a push-to-reset circuit breaker. This feature helps safeguard your equipment from unexpected power surges.

Cleaning Instructions

Use a damp, soft cloth for cleaning the power filter. Avoid using strong or abrasive cleaners that may damage the device.

Introduction

Thank you for purchasing this TAGA Harmony power line filter.

PC power filters combine 2 functions in one device: power noise filtering, and surge and overload protection (for all powered outputs).

POWER NOISE FILTERING

The electricity network in our homes or workplaces is exposed to different interferences for instance electromagnetic interference (EMI) generated by appliances connected to the same network (refrigerators, air conditioners, computers etc.).

These interferences are not only produced inside your house or office but by all appliances in your building or even outside it and can differ on the time of day or week when the traffic on the electrical network changes.

All these interferences which we call noises can get into your AC power and interfere with your system.

This “dirty” electricity can have a negative effect on performance of your audio-video system.

The contaminated electricity has also a negative impact on internal circuits and power supplies of your equipment and because the PF filter works as a buffer between

the wall socket and your gear helping to increase the longevity of the connected components.

SURGE AND OVERLOAD PROTECTION

The PF filter provides surge and overload protection for all outputs thanks to the filtering and protection system with a push-to-reset circuit breaker.

OTHER FEATURES

- Analog Voltage indicator to control stability of the power voltage in the wall outlet (selected models).
- The switchable backlight of the Analog Voltage indicator (selected models).
- IEC C14 power inlet and a removable Schuko-IEC C13 power cord give an option to upgrade to a premium audiophile power cable at any time.

TAGA Harmony power line filter is a great way to limit the negative noises from your electricity and to isolate your system from the contaminated power.

Cleaning

Do not use strong or abrasive cleaners. Use a damp, soft cloth for cleaning.

Specifications and the latest instruction manual edition

Full technical specifications and the latest edition of the instruction manual are available on

www.TagaHarmony.com

Safety Instructions

IMPORTANT

READ THIS SECTION CAREFULLY BEFORE PROCEEDING!



WARNING: TO REDUCE THE RISK OF FIRE OR ELECTRIC SHOCK, DO NOT EXPOSE THIS PRODUCT TO RAIN OR MOISTURE. DO NOT REMOVE COVER (OR BACK). NO USER-SERVICEABLE PARTS INSIDE. REFER SERVICING TO QUALIFIED SERVICE PERSONNEL.



The triangle containing a lightning symbol is intended to alert the user to the presence of uninsulated dangerous voltages within the product's enclosure that may be of sufficient magnitude to constitute a risk of electric shock to persons.



An exclamation mark in a triangle is intended to alert the user to the presence of important operating and maintenance (servicing) instructions in the literature accompanying the appliance.

WARNING: TO REDUCE THE RISK OF FIRE OR ELECTRIC SHOCK, DO NOT EXPOSE THIS APPARATUS TO RAIN OR MOISTURE, AND OBJECTS FILLED WITH LIQUIDS, SUCH AS VASES, SHOULD NOT BE PLACED ON THIS APPARATUS.

CAUTION: TO PREVENT ELECTRIC SHOCK, FULLY AND SECURELY INSERT THE POWER CABLE PLUG INTO THE POWER OUTLET, AND POWER CABLE CONNECTOR INTO THE UNIT SOCKET (IF THIS UNIT IS NOT EQUIPPED WITH AN INTEGRATED [ATTACHED] POWER CORD).

CAUTION: FOR CONTINUED PROTECTION AGAINST RISK OF FIRE, REPLACE THE FUSE (IF THE UNIT IS EQUIPPED WITH A USER REPLACEABLE FUSE) ONLY WITH THE SAME AMPERAGE AND VOLTAGE TYPE. IN CASE WHEN THE UNIT IS NOT EQUIPPED WITH A USER REPLACEABLE FUSE – REFER REPLACEMENT TO QUALIFIED SERVICE PERSONNEL.

WARNING: THE UNIT MAY BECOME HOT. ALWAYS PROVIDE ADEQUATE VENTILATION TO ALLOW FOR COOLING. DO NOT PLACE THE UNIT NEAR A HEAT SOURCE, OR IN SPACES THAT CAN RESTRICT VENTILATION.

1. Read Instructions – All the safety and operating instructions should be read before the product is operated.
2. Retain Instructions – The safety and operating instructions should be retained for future reference.
3. Heed Warnings – All warnings on the product and in the operating instructions should be adhered to.
4. Follow Instructions – All operating and use instructions should be followed.
5. Cleaning – Unplug this product from the power outlet before cleaning. Do not use liquid cleaners or aerosol cleaners.
6. Water and Moisture – Do not use this product near water – for example, near a bath tub, wash bowl, kitchen sink or laundry tub; in a wet basement; or near a swimming pool; and the like. These precautions also apply to the power cord.
7. Accessories – Do not place this product on an unstable cart, stand, tripod, bracket or table. The product may fall, causing serious injury to a child or adult and serious damage to the product. Use only with a cart, stand, tripod, bracket or table recommended by the manufacturer or sold with the product. Any mounting of the product should follow manufacturer's instructions and should use a mounting accessory recommended by the manufacturer.
8. Ventilation – This unit may be equipped with slots and openings in the cabinet (housing) which are provided for ventilation and to ensure reliable operation of the product and to protect it from overheating and these openings must not be blocked or covered. The openings should never be blocked by placing the product on a bed, sofa, rug or other similar surface. This product should be not placed in a built-in installation such as a bookcase or rack unless proper ventilation is provided or the manufacturer's instructions have been adhered to. For products equipped with a separate power supply unit, leave at least 5cm (2in.) of free space on all sides and the top of the power supply.
9. Power Sources – This product should be operated only from the type of power source indicated on the marking label (placed on the product and/or, if applicable, on a separate power supply unit). If you are not sure of the type of power supply in your home, consult your product dealer or local power company. For products intended to operate from battery power or other sources, refer to the operating instructions.
10. Grounding and Polarity – some units for proper operation or to take full advantage of their capabilities may

require to be connected to a grounded power outlet – refer to the user manual for more information.

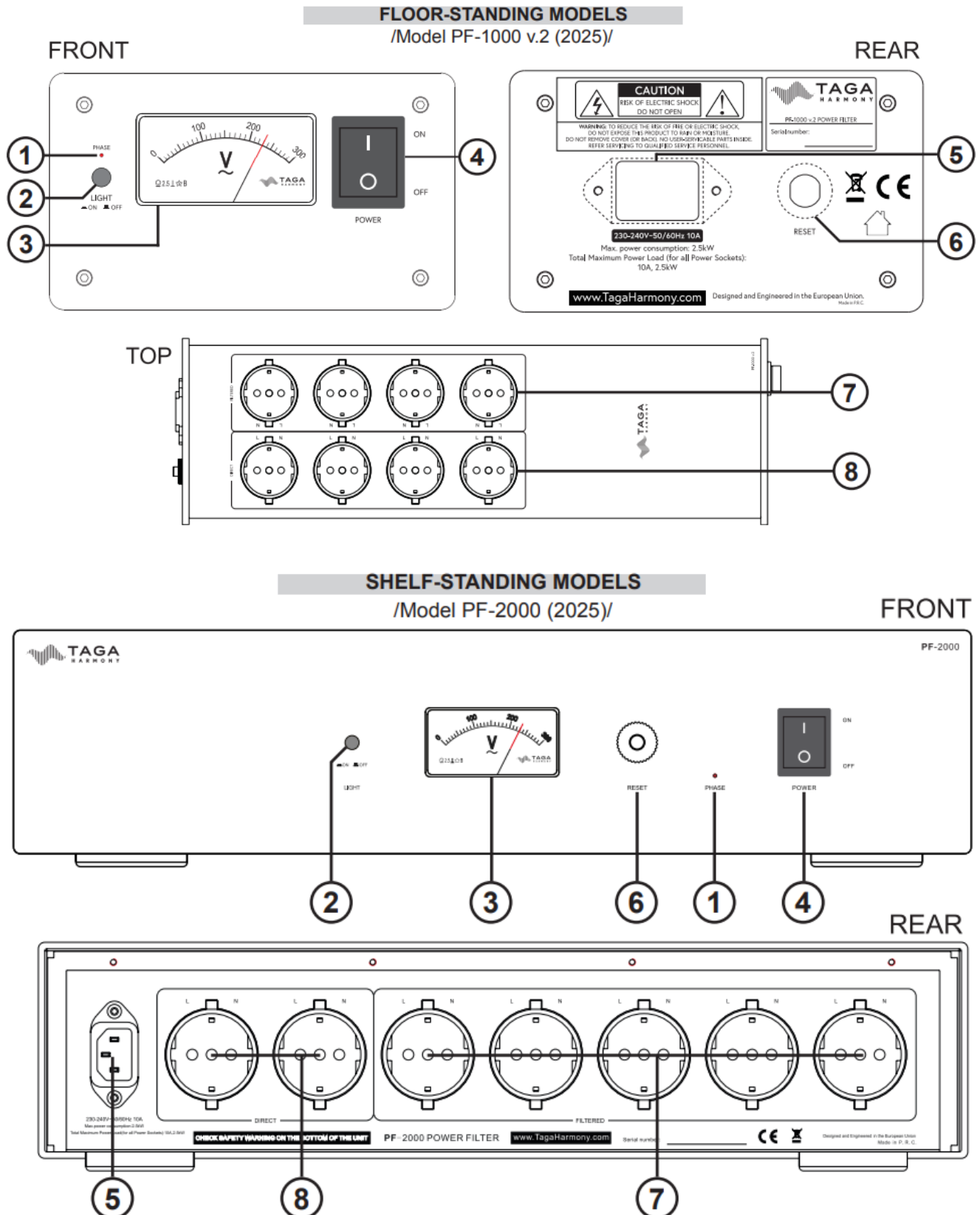
Some units may have markings for the live (L) and neutral (N) conductors for power – in order to take full advantage of capabilities of such products, it is recommended to properly connect the polarity according to the markings on the unit – refer to the user manual for more information. Connecting the polarity not in accordance with the markings will not affect the durability and reliability of the device.

11. Power-cord Protection – Power supply cords should be routed so that they are not likely to be walked on or pinched by items placed upon or against them, paying particular attention to cords at plugs, convenience receptacles and the point where they exit from the product.
12. Lighting – For added protection for this product during a lighting storm or when it is left unattended and unused for long periods of time, unplug it from the wall outlet and disconnect the antenna or system cables. This will prevent damage to the product due to lighting and power-line surges.
13. Overloading – Do not overload wall outlets, extension cords or integral convenience receptacles as this can result in a risk of fire or electric shock.
14. Object and Liquid Entry – Never push objects of any kind into this product through openings as they may touch dangerous voltage points or short-out parts that could result in a fire or electric shock. Do not expose this apparatus to dripping or splashing and ensure that no objects filled with water, such as vases are placed on the apparatus.
15. Servicing – Do not attempt to service this product yourself as opening or removing covers may expose you to dangerous voltage or other hazards. Refer all servicing to qualified service personnel.
16. Damage Requiring Service – Unplug this product from wall outlet and refer servicing to qualified personnel under the following conditions:
 - when power supply cord or plug is damaged;
 - if liquid has been spilled or objects have fallen into the product;
 - if the product does not operate normally by following the operating instructions. Adjust only those controls that are covered by the operating instructions as an improper adjustment of other controls may result in damage and will require extensive work by a qualified technician to restore the product to its normal operation;
 - if the product has been dropped or damaged in any way;
 - if the product exhibits a distinct change in performance – this indicates a need for a service.
17. Replacement Parts – when replacement parts are required, be sure the technician has used replacement parts specified by the manufacturer or with the same characteristics as the original part. Unauthorized substitutions may result in fire, electric shock or other hazards.
18. Safety Check – Upon completion of any service or repairs to this product, ask the service technician to perform safety check to determine that the products is in proper operating condition.
19. Wall of ceiling mounting – The product should be mounted to a wall or ceiling only as recommended by the manufacturer.
20. Heat – The product should be situated away from heat sources such as radiators, heat registers, stoves or other products (including amplifiers) that produce heat.
21. [Refers to products equipped with vacuum tubes] Tube Cage or cover – For your safety and to protect the vacuum tubes this product may be equipped with the factory installed vacuum tube cage or cover.
It is not recommended to remove the cage or cover unless it is required to change the vacuum tubes.
When the cage or cover is removed – do not touch the vacuum tubes – they may be hot and burn the skin!
22. Operating Environment – Operating environment temperature and humidity of the unit: +5°C to +35°C (+41°F to +95°F); less than 85% RH (cooling slots not blocked).

PACKAGING WARNING

The packaging may contain elements such as plastic, that should be kept away from small children.
The thin foil or small elements can stick to the nose and mouth, or may be swallowed and prevent breathing.

Controls and Displays



2. Analog Display Backlight Button (selected models)
3. Voltage Indicator – Analog Display (selected models)
4. Power Switch of the Switched Power Sockets [ON (I) and OFF (0)]
5. Power Cable Input
6. Reset Button
7. Power Sockets – FILTERED Output
8. Power Sockets – DIRECT Output (non-filtered)

Hooking Up the Filter and Operation

The user is fully responsible for checking specifications of external devices and using equipment compatible with the voltage supported by the filter.

TAGA Harmony is not liable for damage to the filter and external devices in case of using devices with incompatible voltage.

TAGA Harmony is not liable for misuse of the filter.

Phase Detection

1. Plug the Power Cable to the filter and into the electrical outlet.
2. Turn on the filter (the Power Switch should be in the upper ON position).
3. The Phase LED Indicator WILL ILLUMINATE when the phase is INCORRECT. If the phase is incorrect follow the below steps:

Assure that the filtered is turned off (the Power Switch is in the lower OFF position and the power cord is disconnected).

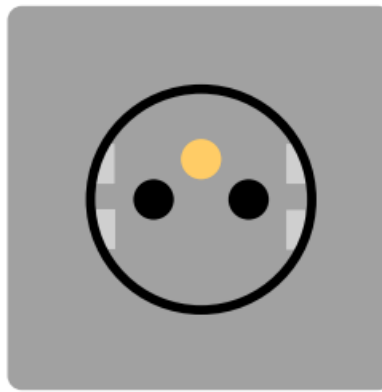
Schuko type electrical outlet.

Remove the power plug from the outlet, reverse the plug by 180 degrees and put it back in the outlet.



Electrical outlet with a ground pin.

Note! Contact a qualified electrician to reverse wiring connection in the outlet.

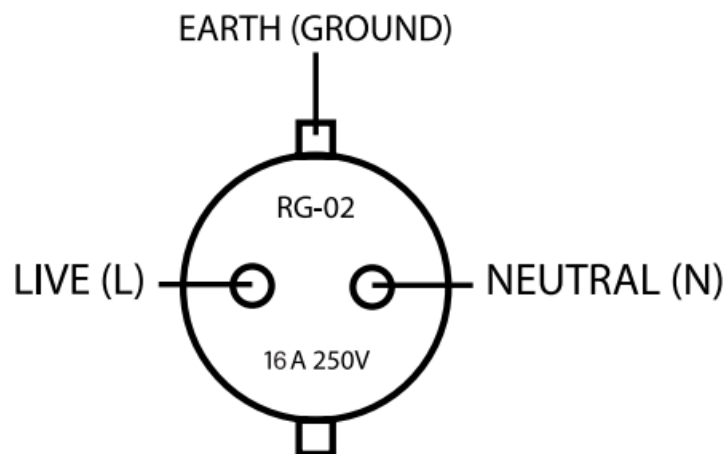


Turn on the filter – The Phase LED Indicator should turn off – the phase is correct.

Due to risk of electric shock refer any changes related to electrical equipment to qualified personnel.

4. The Power Sockets in the filter may have additional marking related to the female contacts: L – LIVE | N – NEUTRAL.

If not then check the below figure showing the Power Socket wiring (for the correct Phase).



If you audio-video equipment has the phase marking for the power cable input, make sure to connect the equipment power cable plug to the filter.

INCORRECT PHASE

At the date of this instruction manual, there is no unified standard in most European Union countries determining the position of the Live (L) and Neutral (N) wires in an electrical outlet.

The term „incorrect phase” is an expression used in this manual only in relation to this device to determine the L and N positions in the output power sockets of the power filter.

POWER CABLES AND PHASE

The Live (L) and Neutral (N) wires in various power cables may be internally connected between the cable plug and the connector in a different way.

If the Phase LED Indicator changes its status after the factory-provided Power Cable is swapped for another one, it is not a malfunction but a symptom that the new power cable has a different internal connection as above-mentioned.

- When you want to turn off the power filter we recommend to turn off your audio-video equipment firstly.
- This power filter is not a uninterruptible power supply unit (UPS). It will not operate when the input power source fails (no power or too low voltage).

Connecting 230V – 240V Audio-Video Equipment

IMPORTANT SAFETY REMARKS!

- This unit requires a single-phase 3-conductor electrical outlet.

- We recommend to use Schuko plugs in all power cables.
- Make sure not to overload the power filter.

Total maximum power load: the total maximum power consumption for all devices connected to the filter should not exceed the maximum power load for this filter.

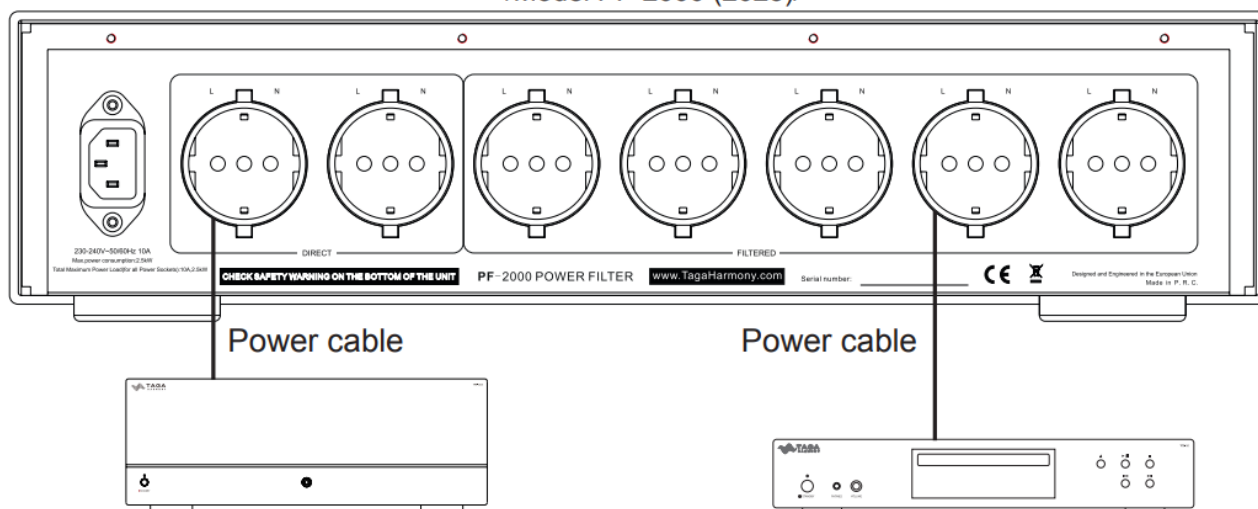
The total maximum power load for this filter is given in Kilowatts (kW) or Watts (W) on the rear panel of the filter : it is also available in the specifications on www.TagaHarmony.com

- Assure that the filtered is turned off (the Power Switch is in the lower OFF position and the power cord is disconnected).
- Using power cables connect your audio-video equipment to the Power Sockets following the Phase Detection recommendations.

Follow the below recommendations for connections:

Recommendations for Connecting Equipment to the Power Sockets

/Model PF-2000 (2025)/



DIRECT SOCKETS unfiltered	FILTERED SOCKETS electrical noises are filtered and limited
<p><u>Amplification devices</u> e.g. Power amplifier, Solid state / Hybrid / Tube integrated amplifiers, AV Receiver, Active subwoofer etc.</p>	<p><u>Digital devices</u> e.g. DAC, Music Streamer, Media Player, BT receiver etc.</p> <p><u>Sound sources</u> e.g. CD / DVD / Blu-ray Player, Turntable, Radio Tuner etc.</p> <p><u>Preamplifiers/ accessories</u> e.g. Turntable / AV / Stereo preamplifier, Headphone amplifier etc.</p> <p><u>Image displays</u> e.g. TV set, Video projector etc.</p>

The recommendations for connecting audio-video equipment to the indicated power sockets may not be the optimal solution for all devices.



To determine the power supply option for a given device that will provide the best quality of its operation, we suggest empirical tests by connecting the device to the different Power Socket groups.

- Your filter is ready for operation.
- Plug the Power Cable to the filter and into the electrical outlet.

Analog display (selected models)

9. When the filter is turned on, the Analog Display will be displaying approximate Voltage in Volts.

Analog Display Backlight Button (selected models) – is used to turn on and off the backlight of the Analog Display.

-  – the backlight is turned on.
-  – the backlight is turned off.

Note! Indications of the Display are highly approximate and should not be taken into account for the professional assessment of the power line quality.

10. Turn on the filter (the Power Switch should be in the upper ON position).

Turn on your audio-video equipment and enjoy your system.

Surge and Overload Protection System (Reset)

11. Reset – the filter is equipped with a surge and overload protection system for all outputs.

If the protection system is activated (no power):

- Disconnect the filter from the power.
- Disconnect all external devices from the filter.
- Wait at least 15 minutes until the filter's internal systems cool down.
- Power on the filter.
- Press the Reset button to restore filter operation.

Note! If the filter operation cannot be restored, contact the TAGA Harmony service center.

The surge and overload protection system operates within the parameters provided in the filter's specifications. However, it does not provide 100% protection against all types of surges and overloads.

TAGA Harmony is not liable for any damage to external devices caused by surges and overloads.

We strongly advise to contact a professional installer or dealer in order to install TAGA Harmony products.

We recommend using high quality TAGA Harmony cables and other installation accessories.

Kit Content:

- Power Line Filter 1EA
- Power Cable 1EA
- Instruction Manual 1EA

EU declaration of conformity

Your product is marked with the symbol shown on the left.

As its manufacturer, hereby we declare that the product is in compliance with the following EU directives and regulations:

2014/30/EU (EMC) & 2014/35/EU (LVD) & 2011/65/EU (RoHS)

The full text of the EU declaration of conformity is available from the manufacturer.



Disposal of the product

Disposal of old electrical & electronic equipment
(applicable in the European Union and other countries with separate collection systems)



■ This symbol on the product or on its literature and packaging indicates that this product shall not be treated as household waste. Instead it shall be handed over to the appropriate collection point for the recycling of electrical and electronic equipment. By ensuring that this product is disposed of correctly, you will help to prevent potential negative consequences for the environment and human health, which could be caused by inappropriate waste handling of this product. The recycling of materials will help to conserve natural resources. For more detailed information about recycling of this product, please contact your local government office, your household waste disposal service or the shop where you purchased the product.

TAGA EUROPE

POLPAK POLAND Sp. z o.o.

AL.JEROZOLIMSKIE 331A

05-816 REGUŁY k/WARSZAWY, POLAND Email: Sales@TagaHarmony.com

www.TagaHarmony.com

FAQ

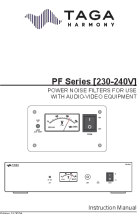
Q: Can I use the power filter with any audio-video equipment?

A: Yes, the TAGA Harmony power line filter is designed for use with a wide range of audio-video equipment to provide power noise filtering and surge protection.

Q: How often should I clean the power filter?

A: It is recommended to clean the power filter regularly using a damp, soft cloth to maintain its performance. Avoid using strong or abrasive cleaners.

Documents / Resources

	<p>TAGA HARMONY PF Series Power Line Filter [pdf] Instruction Manual PF Series Power Line Filter, PF Series, Power Line Filter, Line Filter, Filter</p>
---	---

References

- [Home - TAGA Harmony](#)
- [User Manual](#)

[Manuals+](#), [Privacy Policy](#)

This website is an independent publication and is neither affiliated with nor endorsed by any of the trademark owners. The "Bluetooth®" word mark and logos are registered trademarks owned by Bluetooth SIG, Inc. The "Wi-Fi®" word mark and logos are registered trademarks owned by the Wi-Fi Alliance. Any use of these marks on this website does not imply any affiliation with or endorsement.