

TAFFIO NTG 4.0 12 Inch Touch Android GPS User Guide

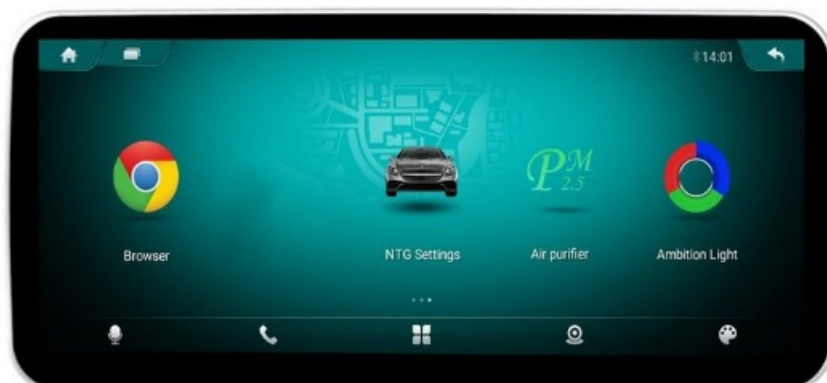
[Home](#) » [TAFFIO](#) » TAFFIO NTG 4.0 12 Inch Touch Android GPS User Guide 

Contents

- 1 TAFFIO NTG 4.0 12 Inch Touch Android GPS
- 2 Product Information: Mercedes TUN-SERIES
- 3 Connection for NTG 4.0
- 4 Connection for NTG 4.5 / 4.7
- 5 Sound & Canbus for NTG 4.0 / 4.5 / 4.7
- 6 Connection for NTG 5 or Higher
- 7 Sound Settings for NTG 5
- 8 Settings
- 9 Carplay and Android Auto via USB
- 10 Wireless Carplay for IOS
- 11 Documents / Resources
- 12 Related Posts



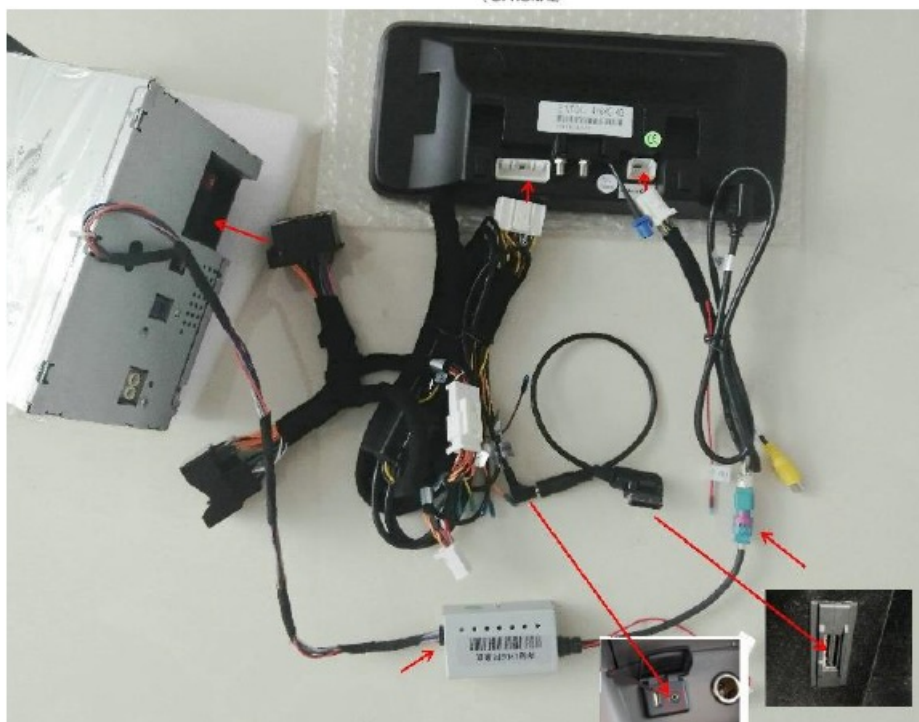
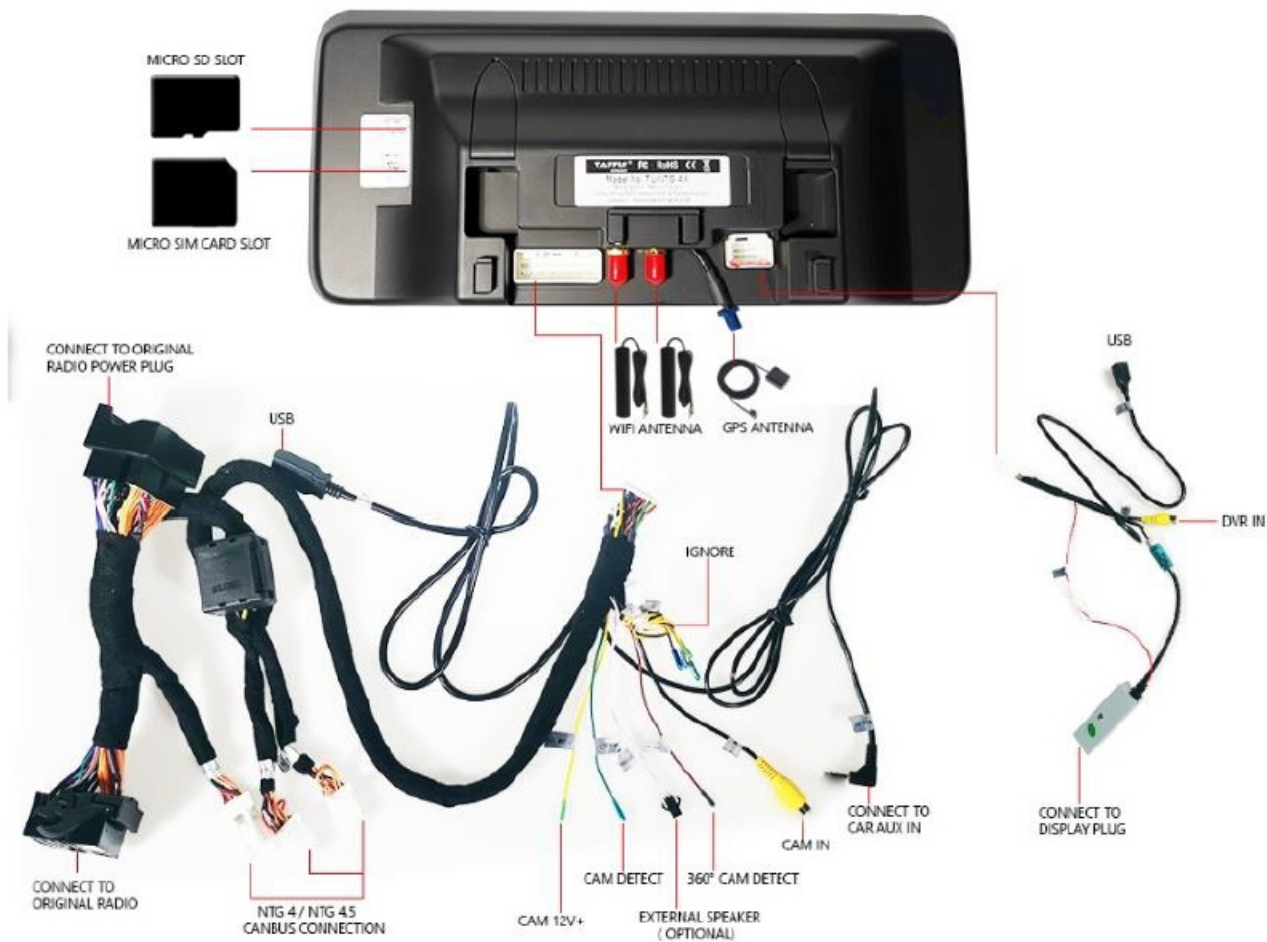
TAFFIO NTG 4.0 12 Inch Touch Android GPS



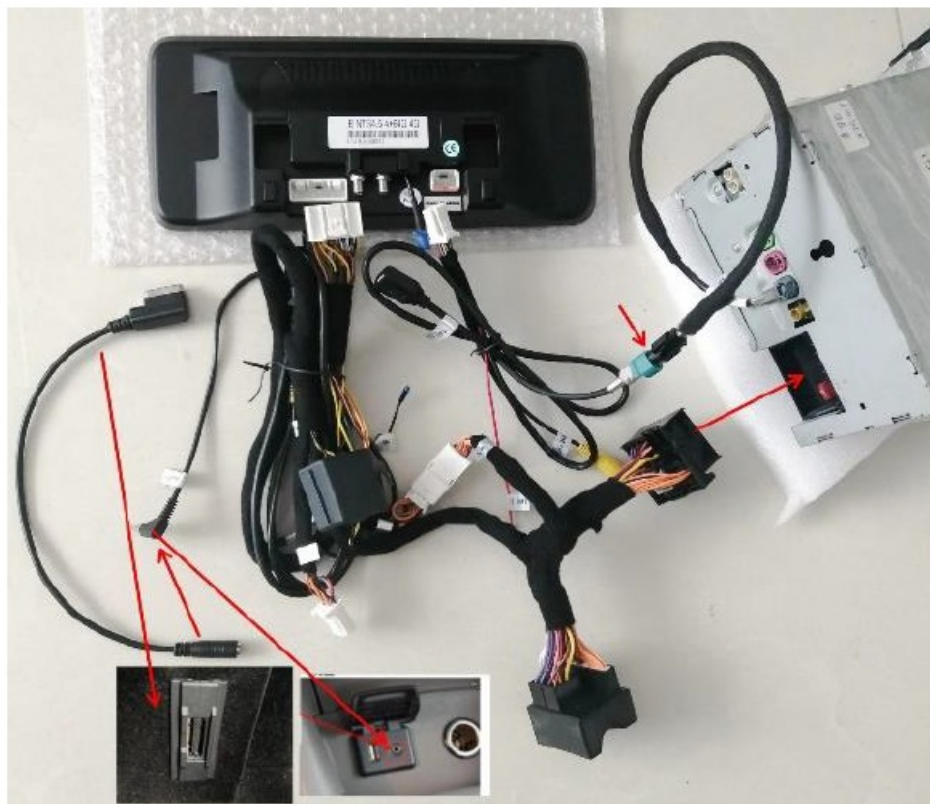
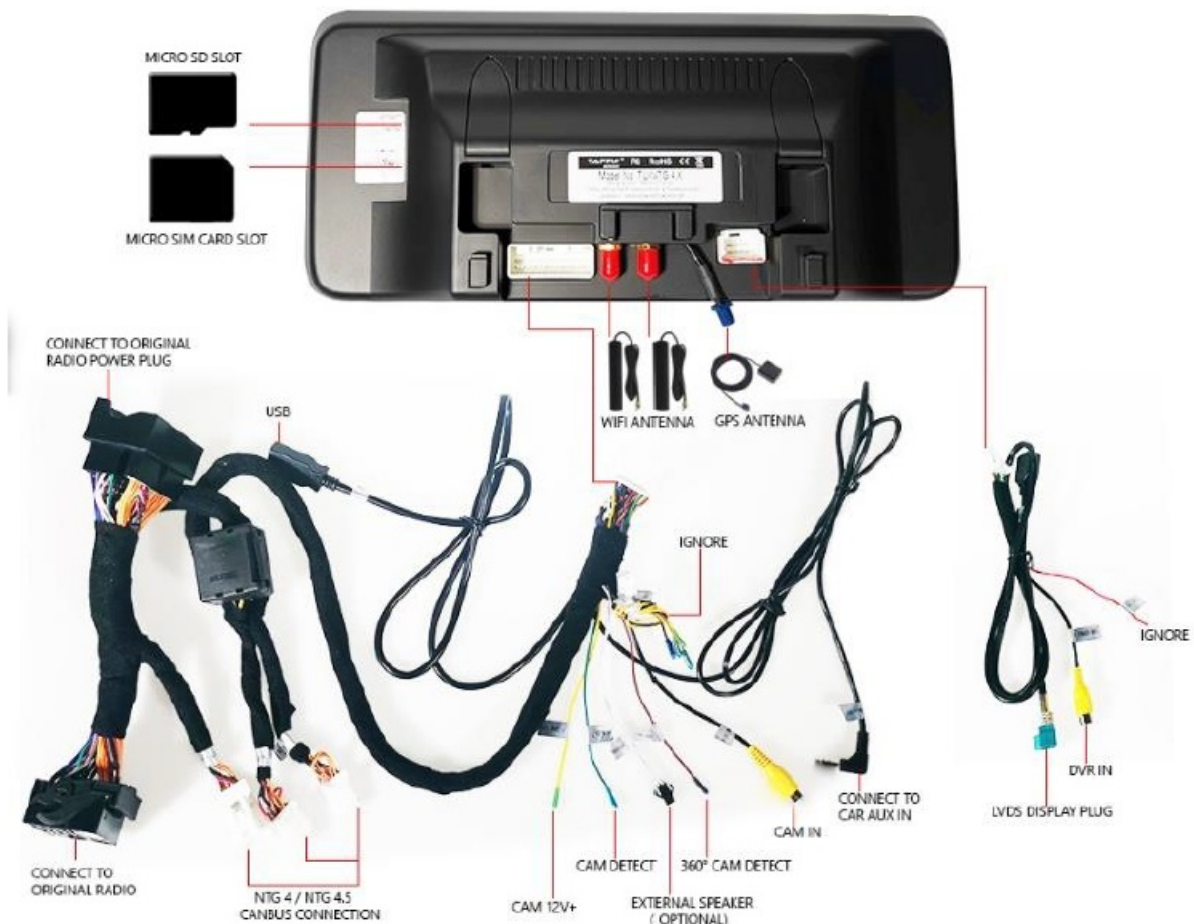
Product Information: Mercedes TUN-SERIES

The Mercedes TUN-SERIES is a product that provides sound and Canbus connectivity for NTG 4.0, NTG 4.5, NTG 4.7, NTG 5, and higher versions. It also allows for camera and navigation settings, as well as CarPlay and Android Auto connectivity via USB or wireless for IOS.

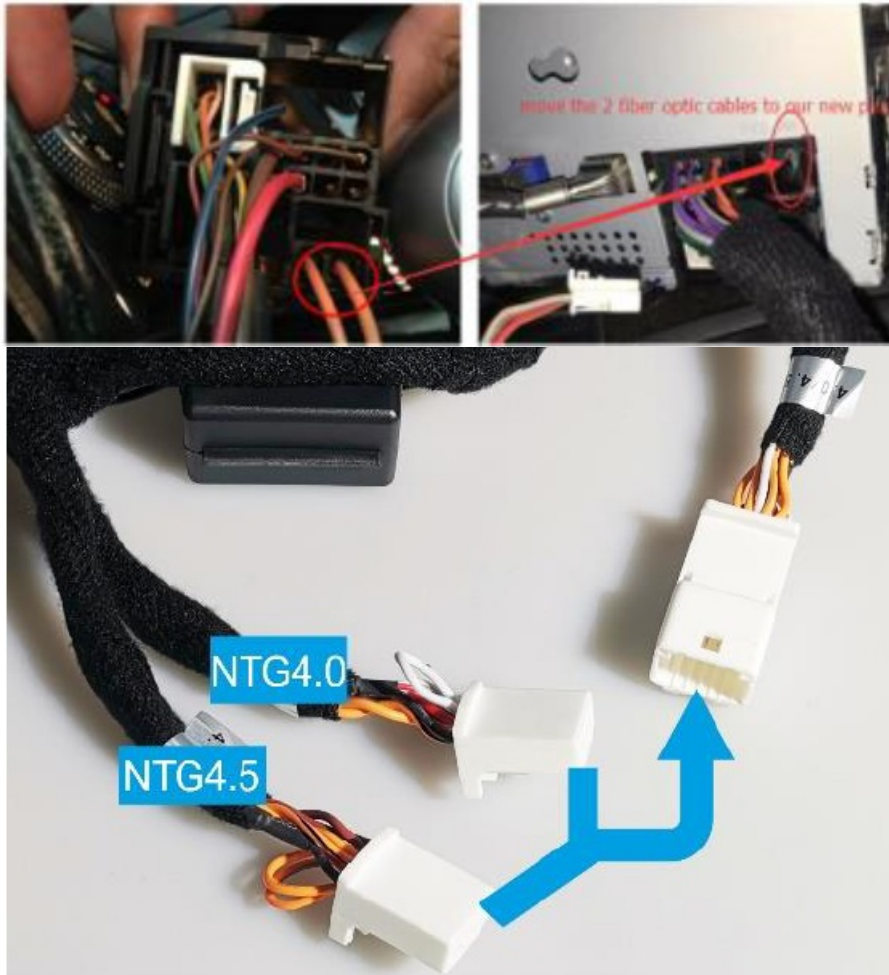
Connection for NTG 4.0



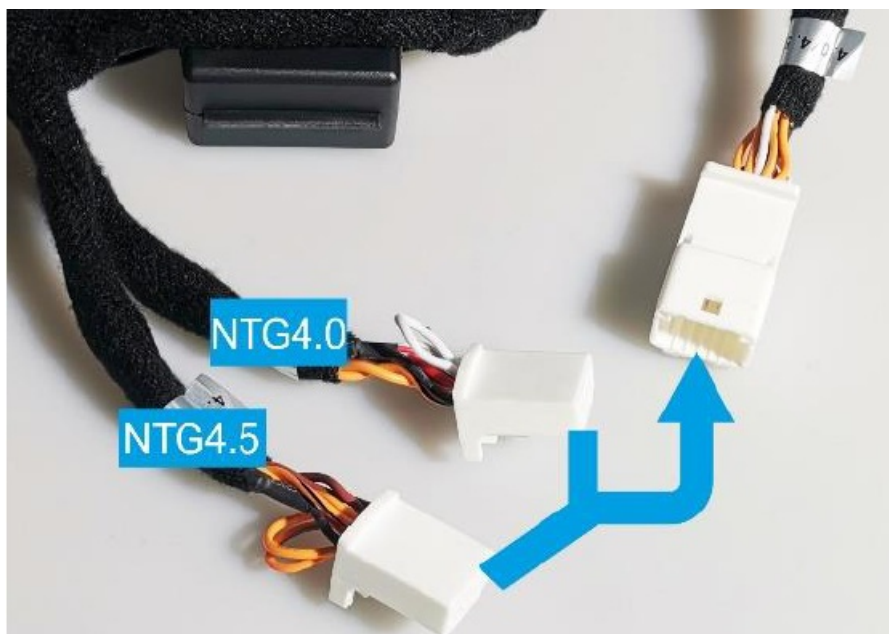
Connection for NTG 4.5 / 4.7



Sound & Canbus for NTG 4.0 / 4.5 / 4.7



If the vehicle has FIBRE OPTIC CABLE (2 orange cables in the picture), remove it and plug it into the back of the original radio as shown below.



Connect the Canbus connector depending on the original NTG version

- Connect the Audio Output 3.5mm Male connector to your car AUX Input connector
- Set the Audio Switching Method to AUX
- Select the AUX Source in your original screen



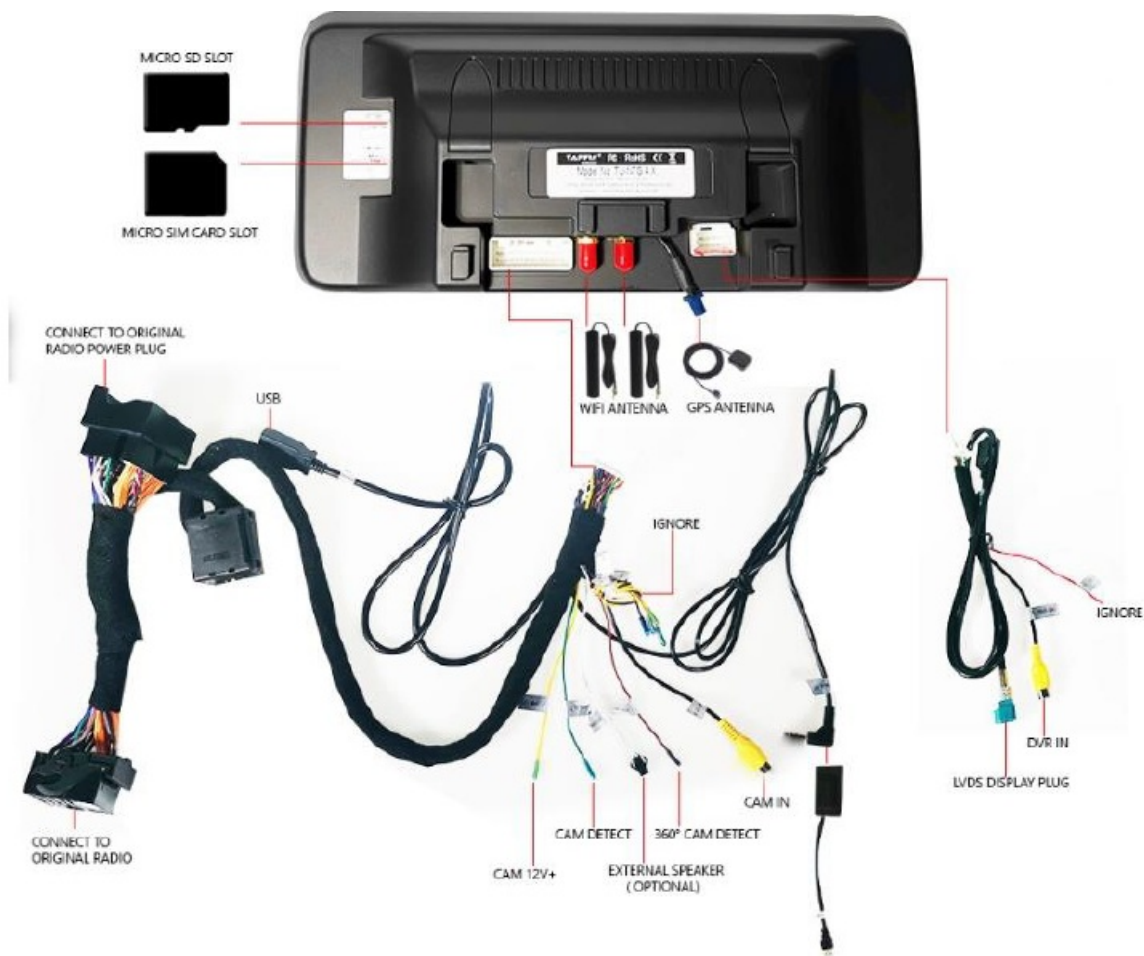
CAR with Benz AMI Interface

- Connect to 3.5mm Aux Output to the AMI Adapter and connect the AMI Adapter to your AMI Socket.



If you cannot see AUX or AMI as a source in the original menu, please activate it as described on page 12 below

Connection for NTG 5 or Higher

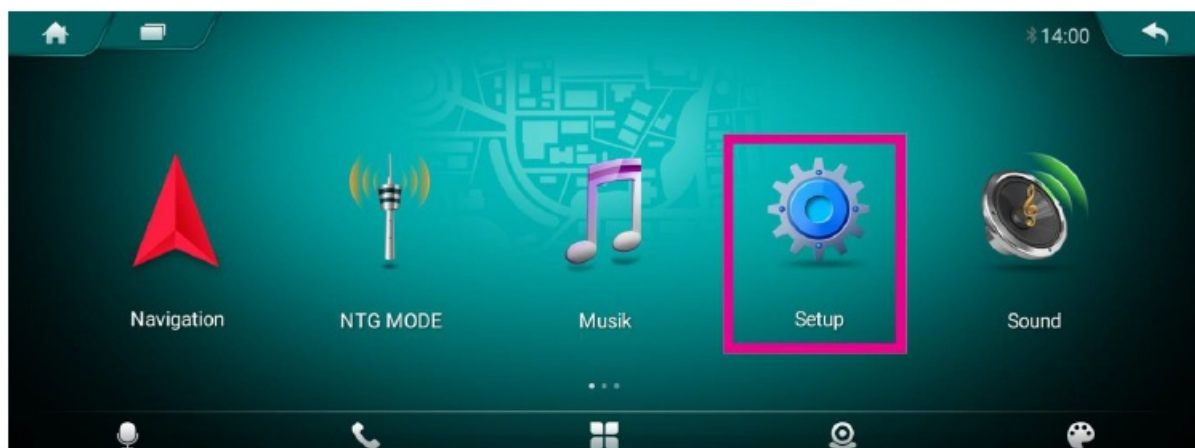




Sound Settings for NTG 5

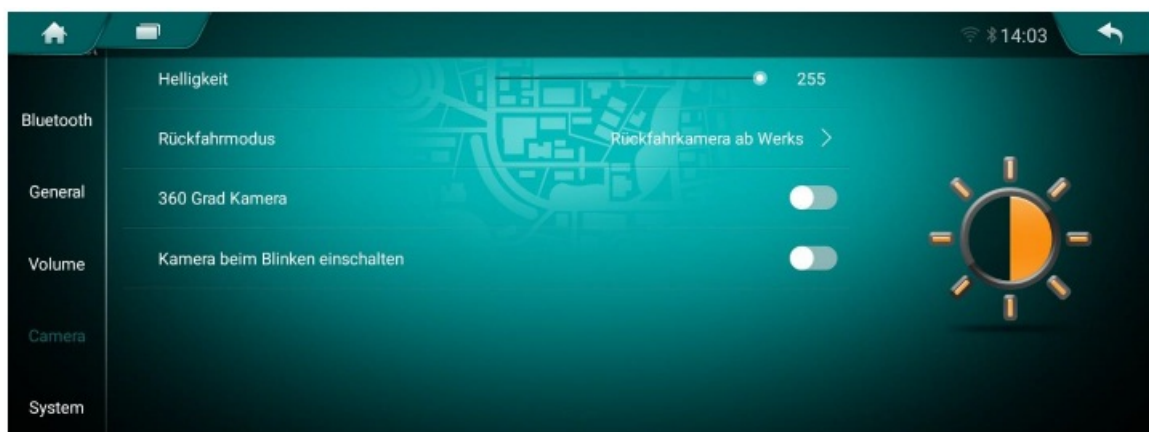
1. Select Sound switching method USB
2. Connect the 3.5mm AUX jack to the USB to AUX adapter and plug it into the USB slot of your vehicle
3. Select USB as source in the original NTG menu to have sound

Settings



Tap on SETUP in Main Menu

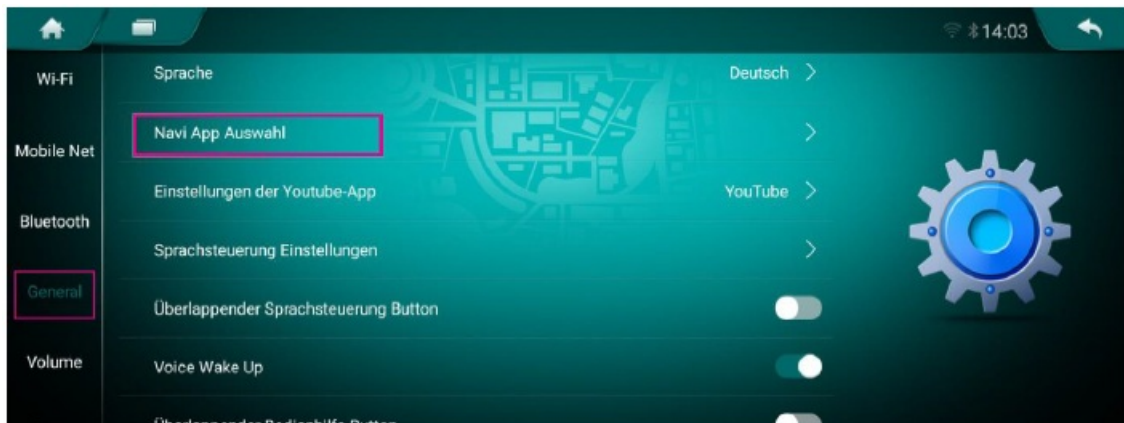
Camera Settings



Select Camera in Setup Menu, here you can set

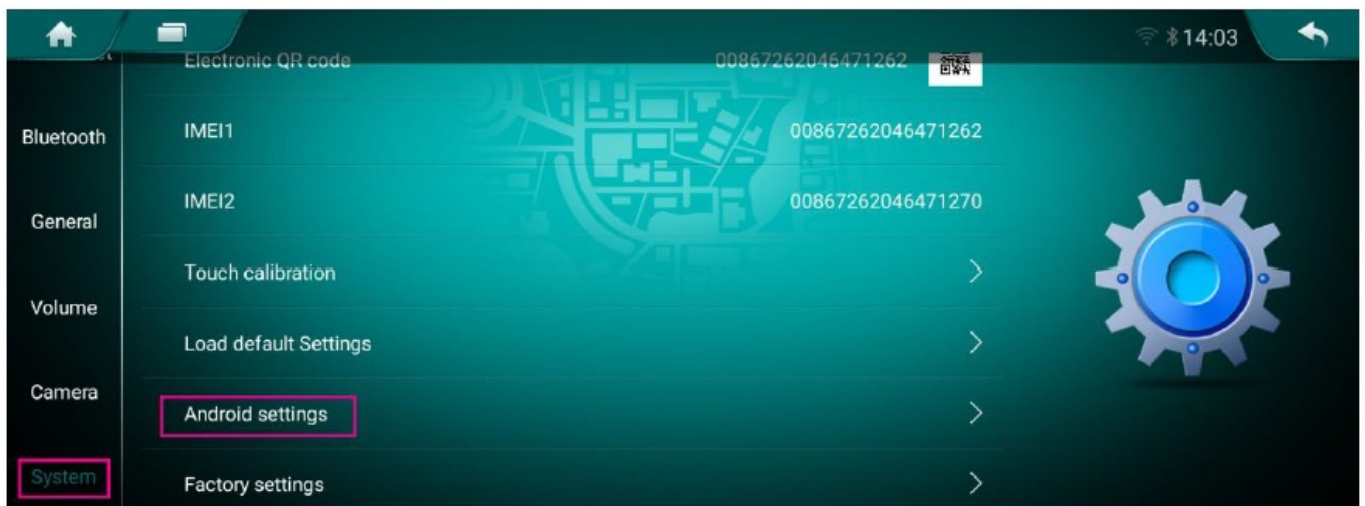
- Original or Retrofit Backup Camera
- Rear Camera Parking Lines
- Backup Cam Picture Mirroring
- Rear Camera type
- Camera Switch Time lapse

Navigation Settings



Select General in Setup Menu, select navigation app settings and select your favorite app for navigation that you want to use

General Settings



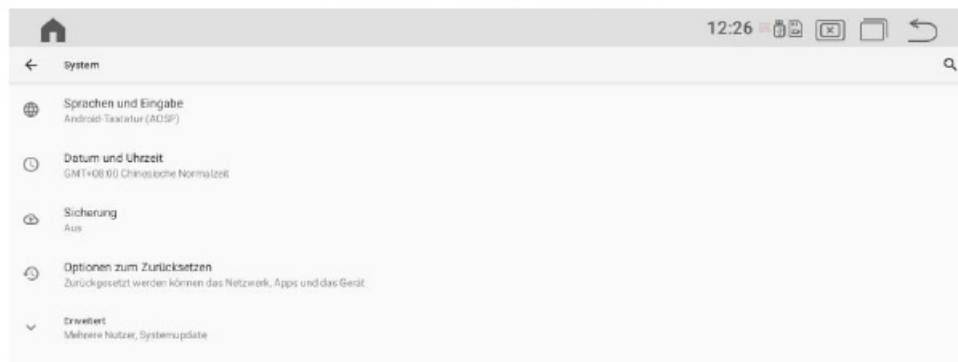
Select System in Setup Menu and then Android settings > here you can change settings like language, Time & Date, Network and much more

By default, the system is set up to have a data connection and receives the time from the network. If you use the system without an Internet connection, it is advisable to change the time and date settings, otherwise the time will be reset each time the device is restarted.

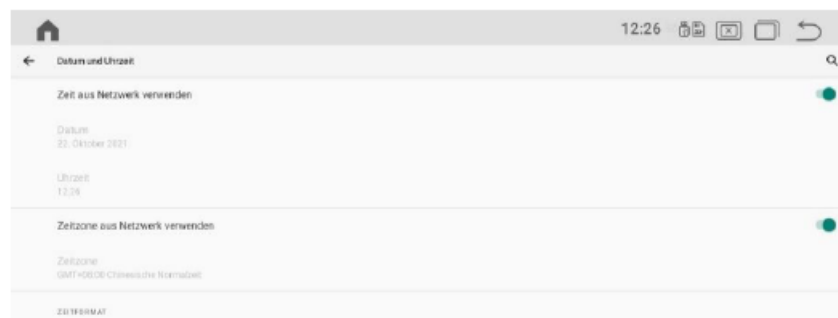
Select System in Setup Menu then choose Android settings



Select System and then Date and Time



Deactivate Automatic Date and Time and Automatic Time zone

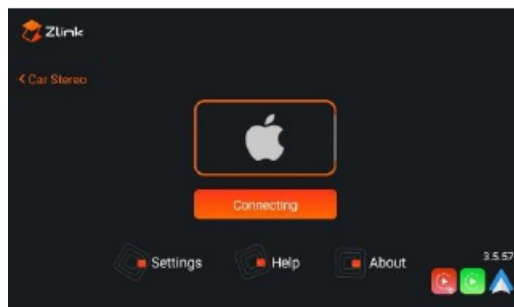


Select time zone and set your region then you can set time and date manually



Carplay and Android Auto via USB

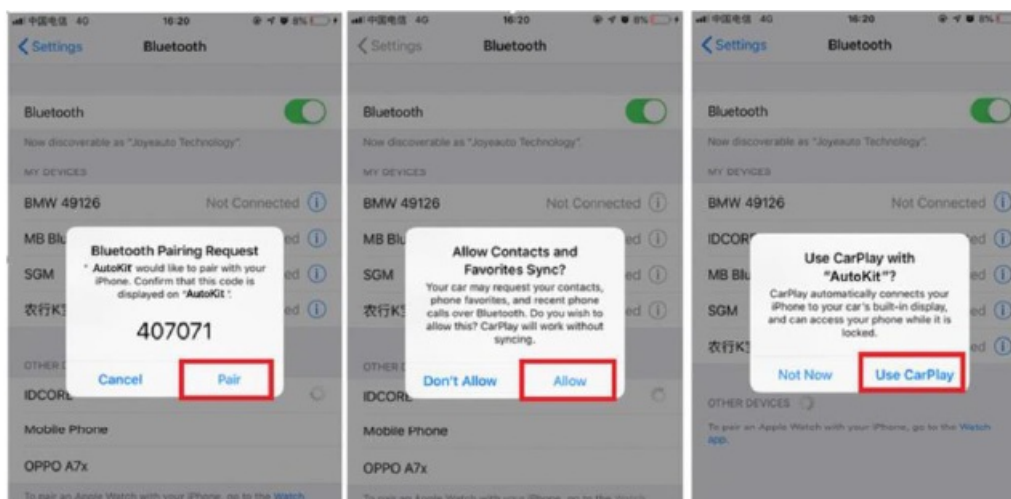
1. OPEN Z LINK APP IN MAIN MENU (ICON CAN BE DIFFERENT)



2. CONNECT YOUR SMARTPHONE VIA USB
3. CARPLAY / ANDROIDAUTO WILL START AUTOMATICLY

Wireless Carplay for IOS

1. Open ZLINK APP
2. Turn On Phone Wifi
3. Turn On phone Bluetooth and connect with Android Display
4. Please be Sure that you are NOT connected with Factory System.



Documents / Resources

	<p>TAFFIO NTG 4.0 12 Inch Touch Android GPS [pdf] User Guide</p> <p>NTG 4.0, NTG 4.5, NTG 4.7, NTG 5, NTG 4.0 12 Inch Touch Android GPS, 12 Inch Touch Android GPS, Touch Android GPS, Android GPS, GPS</p>
--	---